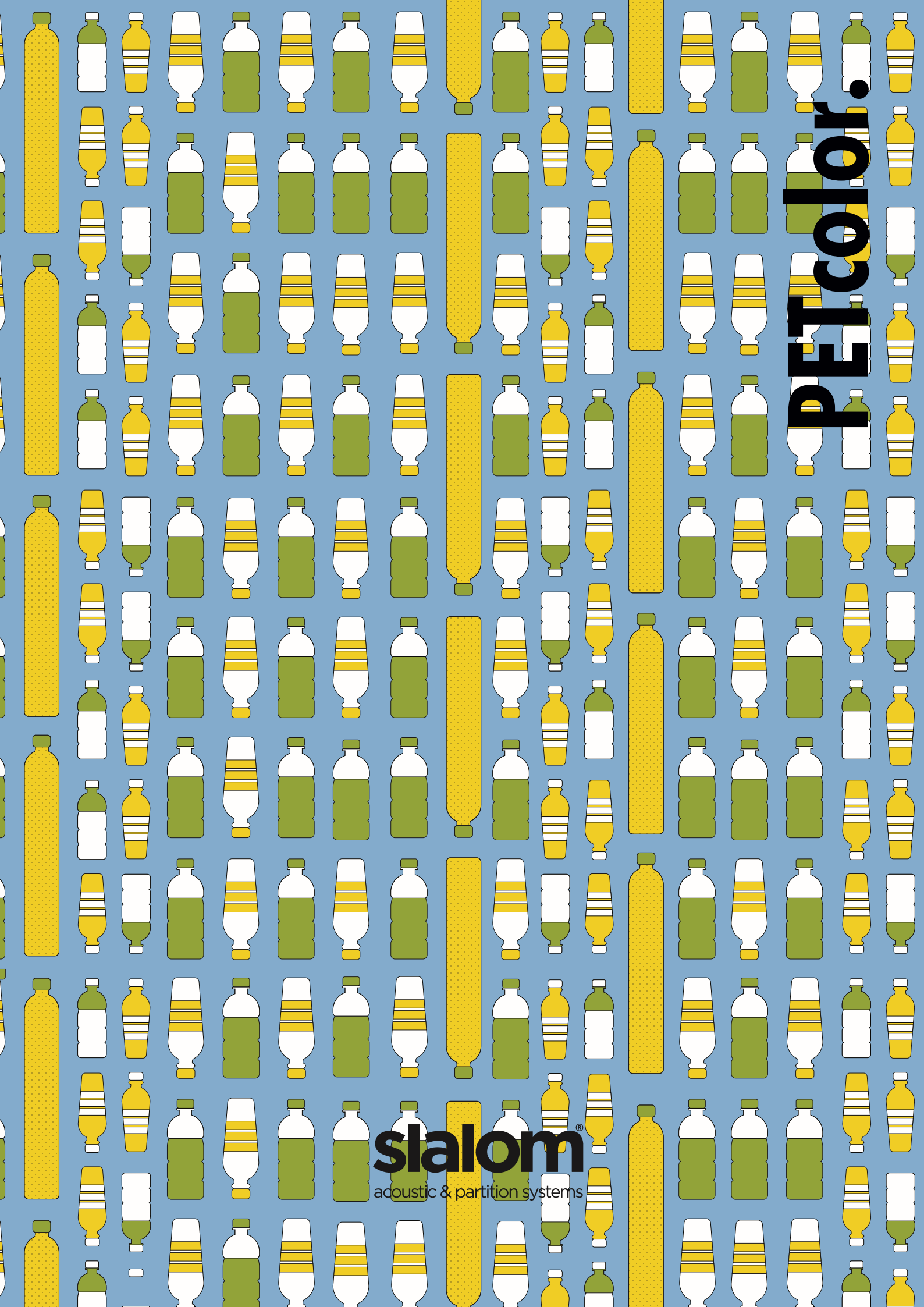


PETcolor.

slalom[®]
acoustic & partition systems



Let us introduce you to... **PETcolor.**

PETcolor. è un tessuto sostenibile, proveniente dal riciclo di bottiglie di plastica. Definito da una texture strutturata al tatto, dall'estetica piacevolmente dinamica, questo materiale movimentato e vibrante si presta ad applicazioni differenti, anche grazie ad una gamma colori travolgente ed attuale. Un tessuto facile da amare.

PETcolor. is a sustainable fabric, coming from the recycling of plastic bottles. Defined by a structured texture to the touch, with a pleasantly dynamic aesthetic, this lively and vibrant material is suitable to different applications, also thanks to an overwhelming and contemporary color range. An easy-to-love fabric.



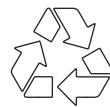
#GoingGreen



RECYCLED PLASTIC



ECO FRIENDLY



100% RECYCLABLE



LOW EMISSIONS



100% TRACEABLE SOURCES



MADE IN ITALY

We can do it!

PRODUCT CERTIFICATIONS



BUILDING CERTIFICATIONS

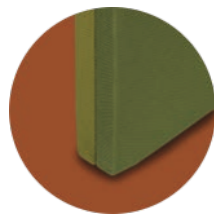
Product compliant for

BREEAM®

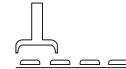
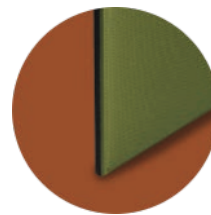


Can you hear it?

ACOUSTIC TECHNOLOGY AND PERFORMANCE

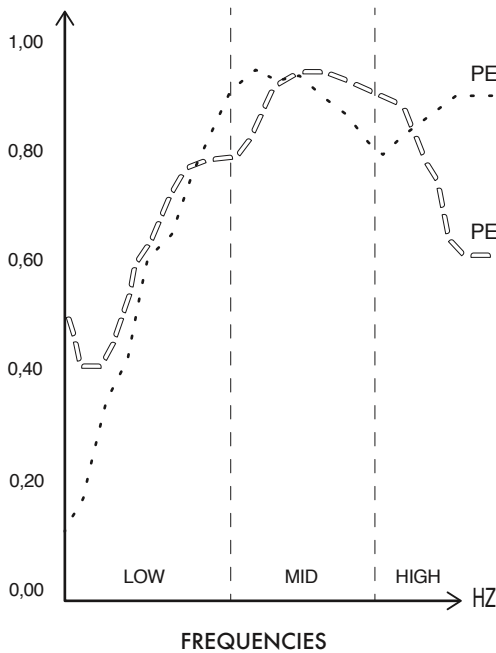


TAILOR MADE



ECORANGE

α ABSORPTION COEFFICIENT



PETcolor for **TAILOR MADE**

Pannelli sartoriali | Custom-made panels
Alpha da 0,2 a 1 | NRC da 0,3 a 1

PETcolor for **ECORANGE**

Pannelli termoformati | Thermoformed panels
Alpha da 0,2 a 1 | NRC da 0,3 a 1



ENVIRONMENTAL IMPACT

100% PET, recycled polyester + GRS

100% Recyclable product respecting the environment.



INDOOR QUALITY

FABRIC | Italia-Class 1 / Germany-B1 DIN 4102 / Francia-M1 BS 5852 Crib 5 using a CM Foam 35 kg/cu.m EN 1021 Part. 1-2 using a CM Foam 35 kg/cu.m

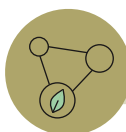
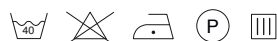
PANELS | B-s1, d0 - UNI EN 13823:2010+A1:2014
B-s2, d0 - UNI EN 13823:2010+A1:2014

Recyclable product respecting the environment for a better indoor air quality.
- Greenguard Gold certified
- VOC compliant to all EU standards

Suitable for Breeam, Leed, Well and Fitwel building certifications.

Rating according to UNI ISO 11654, UNI EN ISO 354 and ASTM C423 - 09a.

Use regularly the vacuum-cleaner with smooth spout, or brushes with soft bristles, or upholstered professional cleaners.



DESIGN COMMITMENT

Martindale Abrasione: UNI EN ISO 12947-1:2000 100.000, turns \pm 20%
Fastness to light: (Xenotest) UNI EN ISO 105 B02 5/6 \pm 1/2

Slightly differences between dyeing lots are considered normal.

Category A

5 years warranty



COMPOSITION

100% PET, poliestere FR riciclato + GRS



RECYCLABLE

100% Prodotto riciclabile nel rispetto dell'ambiente.



MADE IN ITALY



FIRE RESISTANCE

TESSUTO | Italia-Class 1 / Germania-B1 DIN 4102 / Francia-M1 BS 5852 Crib 5 using a CM Foam 35 kg/cu.m EN 1021 Part. 1-2 using a CM Foam 35 kg/cu.m

PANNELLI | B-s1, d0 - UNI EN 13823:2010+A1:2014
B-s2, d0 - UNI EN 13823:2010+A1:2014



PEOPLE FRIENDLY

Prodotto a bassa emissione chimica per una migliore qualità dell'aria.
- Greenguard Gold certified
- VOC conforme a tutti gli standard UE



BUILDING FRIENDLY

Adatto per certificazione architettonica per edifici Breeam, Leed, Well e Fitwel.



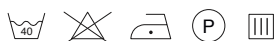
ACOUSTIC COMFORT

Valutazione secondo UNI ISO 11654, UNI EN ISO 354 e ASTM C423 - 09a.



EASY CLEANING

Usare con regolarità l'aspirapolvere a beccuccio liscio, oppure utilizzare spazzole a setole morbide o detergenti professionali per imbottiti.



NEW!



ANTIBACTERIA (OPTIONAL)



DURABILITY

Martindale Abrasione: UNI EN ISO 12947-1:2000 100.000, cicli \pm 20%
Solidità alla luce: (Xenotest) UNI EN ISO 105 B02 5/6 \pm 1/2



COLOUR MATCHING

Leggere differenze di colore tra una partita e l'altra sono da considerarsi normali.



CATEGORY

Categoria A



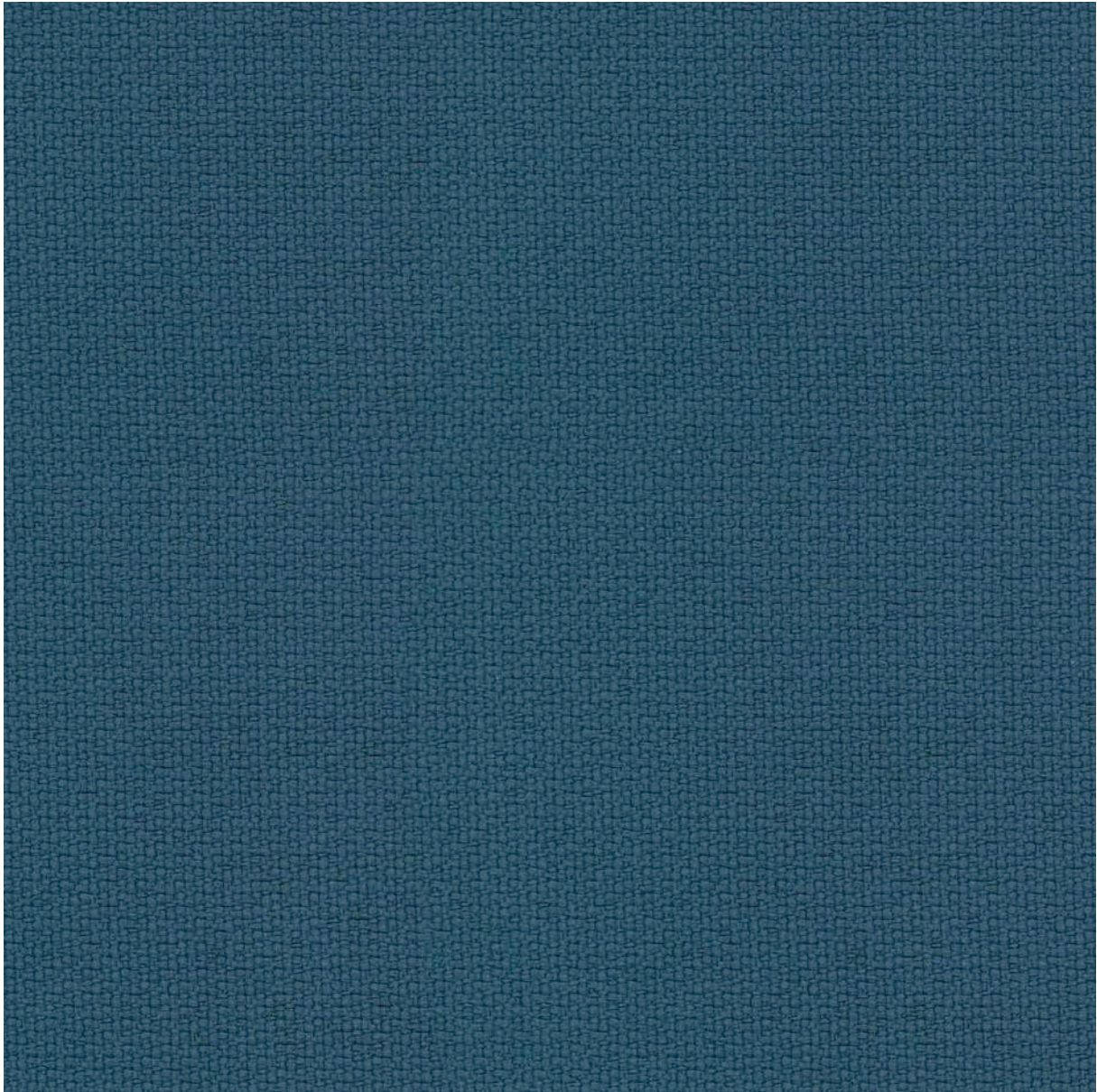
WARRANTY

5 anni di garanzia



DESIGN COMMITMENT

MATERIAL CORE



Sugar 2357



THICKNESS

gr / mtl 470 ± 10%

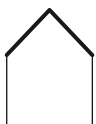


WIDTH

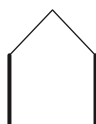
cm 140 ± 2% | " 55 ± 2%



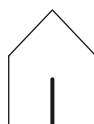
APPLICATIONS



CEILING
|||||



WALL
|||||



FREESTANDING
|||||



DESK
|||||

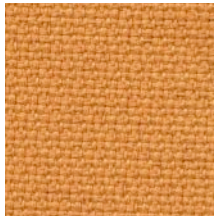


FURNITURE
|||||

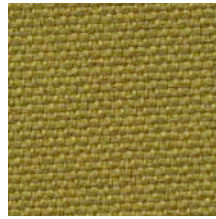
PETcolor.



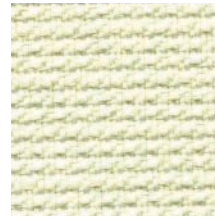
Milk 2509



Yellow 2051



Pistachio 2451



White 2999



Ice 2612



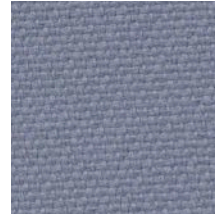
Beige 2503



Orange 2104



Green leaf 2452



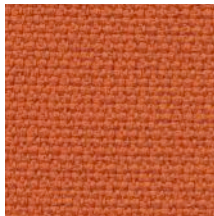
Pouder 2358



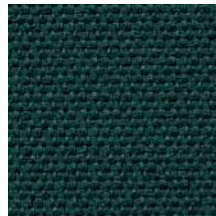
Grey 2602



Camel 2504



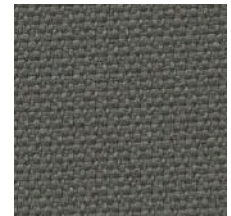
Papaya 2103



Forest 2459



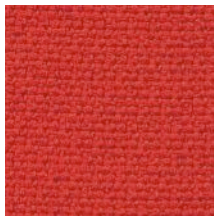
Light blue 2351



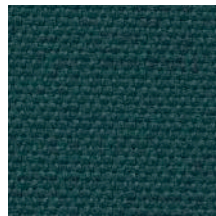
Rock Grey 2603



Deer 2510



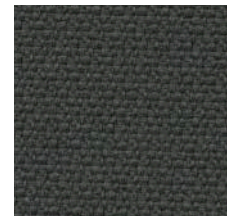
Red 2201



Peacock 2402



Greece 2308



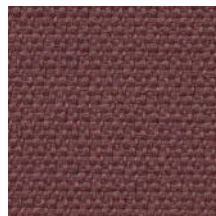
City grey 2604



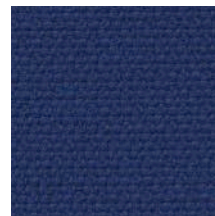
Sierra 2557



Palazzo Red 2206



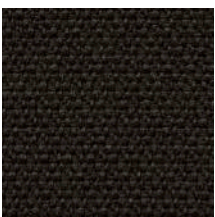
Malva 2251



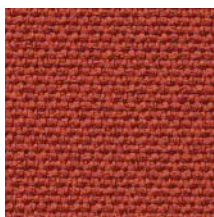
Van Gogh 2301



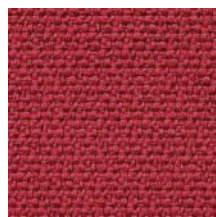
Sugar 2357



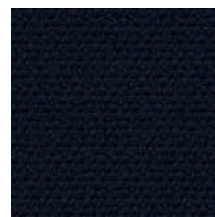
Mud 2552



Brick 2555



Ossalide 2151



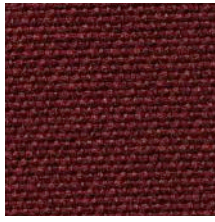
Midnight 2309



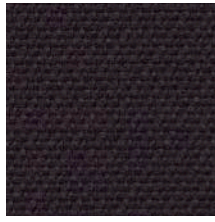
Infinity 2307



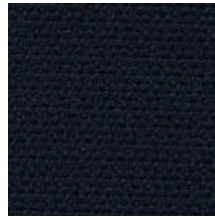
Dark chocolate 2556



Bordeaux 2203



Blueberry 2252



Blue romance 2303



Black 2651



DESIGN YOUR OWN!

* PRINT colour charts



Printable

What's behind?

Sostenibilità . Comfort . Design

La missione di Slalom è quella di partecipare attraverso materiali dalle altissime qualità innovative e tecniche alla creazione di un ambiente sano, dal comfort acustico eccezionale e progettato su misura per le persone. Lo fa attraverso l'impegno per la protezione dell'ambiente e della salute dell'uomo, sviluppando un'ampia gamma di prodotti e soluzioni tailor-made investendo costantemente in funzionalità, durabilità e riciclo.

Sustainability . Comfort . Design

An important mission for Slalom, in compliance with the surrounding environment and people's health. The commitment to protect the environment and human health is a priority in our path to sustainability. Slalom develops its range from the idea that each product has use, durability and recycling as its key. Slalom develops its range from the idea that each product has use, durability and recycling as its key.

#WorkingForQuality

Company Certification



#SupportingSustainability

Slalom is partner of



MEMBER

#SupportingCulture

PEGGY GUGGENHEIM COLLECTION

#SupportingResearch



#SupportingWomen:

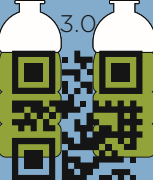
75% Female employees

#SocialResponsibility:

Sustainability Report 2020

#CorporateResponsibility:

Check online our Ethic Code



SLALOM sr