

PETfabric.

slalom[®]

acoustic & partition systems

Let us introduce you to... **PETfabric.**

PETfabric. è un tessuto che nasce dall'intreccio della fibra di plastica riciclata attraverso una palette di tinte eleganti e gentili: un melange di colori intramontabili che costituisce il DNA di un materiale dal carattere sostenibile e responsabile, adatto a molteplici usi e applicazioni.

PETfabric. is a fabric that is born from the intertwining of recycled plastic fiber through a palette of elegant and gentle colors: a melange of timeless colors that constitutes the DNA of a material with a sustainable and responsible character, suitable for multiple uses and applications.



#OurSustainableMission



RECYCLED PLASTIC



ECO FRIENDLY



100% RECYCLABLE



LOW EMISSIONS



100% TRACEABLE SOURCES



MADE IN ITALY



We can do it!

PRODUCT CERTIFICATIONS



BUILDING CERTIFICATIONS

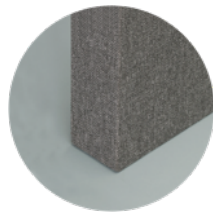
Product compliant for

BREEAM®

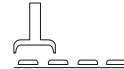
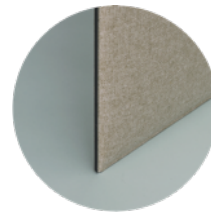


Can you hear it?

ACOUSTIC TECHNOLOGY AND PERFORMANCE

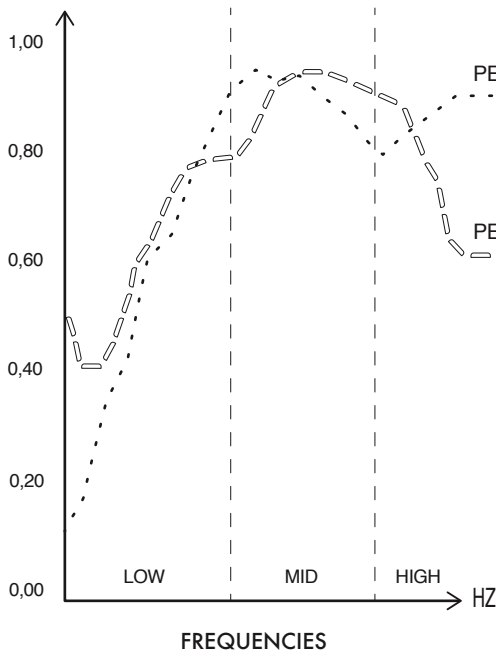


TAILOR MADE



ECORANGE

α ABSORPTION COEFFICIENT



PETfabric for **TAILOR MADE**

Pannelli sartoriali | Custom-made panels

Alpha da 0,2 a 1 | NRC da 0,3 a 1

PETfabric for **ECORANGE**

Pannelli termoformati | Thermoformed panels

Alpha da 0,2 a 1 | NRC da 0,3 a 1

MATERIAL OVERVIEW

PETfabric.



COMPOSITION

100% poliestere FR riciclato + GRS



RECYCLABLE

100% Prodotto riciclabile nel rispetto dell'ambiente.



MADE IN ITALY



FIRE RESISTANCE

TESSUTO | Italia-classe 1 / Germania-B1 DIN 4102 / Francia-M1 BS 5852 Crib 5 using a CM Foam 35 kg/cu.m
EN 1021 Part. 1-2using a CM Foam 35 kg/cu.m

PANNELLI | B-s1, d0 - UNI EN 13823:2010+A1:2014
B-s2, d0 - UNI EN 13823:2010+A1:2014



PEOPLE FRIENDLY

Prodotto a bassa emissione chimica per una migliore qualità dell'aria.

- Greenguard Gold certified
- Oeko-tex Standard 100
- VOC conforme a tutti gli standard UE



BUILDING FRIENDLY

Adatto per certificazione architettonica per edifici Breeam, Leed, Well e Fitwel.



ACOUSTIC COMFORT

Valutazione secondo UNI ISO 11654, UNI EN ISO 354 e ASTM C423 - 09a.



EASY CLEANING

Usare con regolarità l'aspirapolvere a beccuccio liscio, oppure utilizzare spazzole a setole morbide o detersivi professionali per imbottiti.



ANTIBACTERIA (OPTIONAL)



DURABILITY

Martindale Abrasione: UNI EN ISO 12947-1:2000 50.000, cicli \pm 20%
Solidità alla luce: (Xenotest) UNI EN ISO 105 B02 6 \pm 1



COLOUR MATCHING

Leggere differenze di colore tra una partita e l'altra sono da considerarsi normali.



CATEGORY

Categoria A



WARRANTY

5 anno di garanzia



ENVIRONMENTAL IMPACT

100% recycled polyester + GRS

100% Recyclable product respecting the environment.



INDOOR QUALITY

FABRIC | Italia-class 1 / Germany-B1 DIN 4102 / Francia-M1 BS 5852 Crib 5 using a CM Foam 35 kg/cu.m
EN 1021 Part. 1-2using a CM Foam 35 kg/cu.m

PANELS | B-s1, d0 - UNI EN 13823:2010+A1:2014
B-s2, d0 - UNI EN 13823:2010+A1:2014

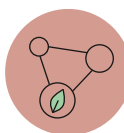
Recyclable product respecting the environment for a better indoor air quality.

- Greenguard Gold certified
- Oeko-tex Standard 100
- VOC compliant to all EU standards

Suitable for Breeam, Leed, Well and Fitwel building certifications.

Rating according to UNI ISO 11654, UNI EN ISO 354 and ASTM C423 - 09a.

Use regularly the vacuum-cleaner with smooth spout, or brushes with soft bristles, or upholstered professional cleaners.



DESIGN COMMITMENT

Martindale Abrasione: UNI EN ISO 12947-1:2000 50.000, turns \pm 20%
Fastness to light: (Xenotest) UNI EN ISO 105 B02 6 \pm 1

Slightly differences between dyeing lots are considered normal.

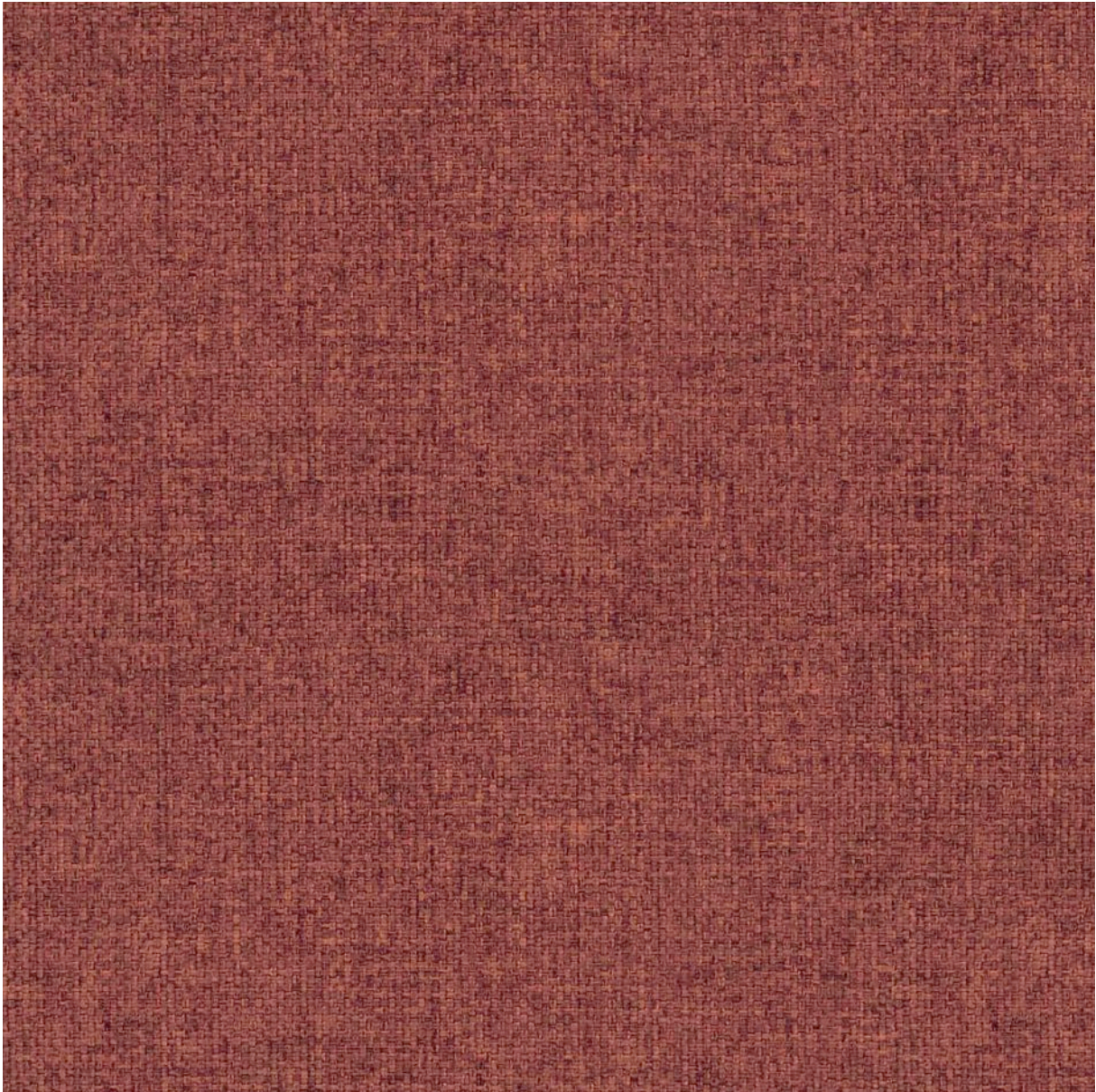
Category A

5 year warranty



DESIGN COMMITMENT

MATERIAL CORE



Brick 4211



THICKNESS

gr / mtl 470 ± 10%

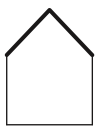


WIDTH

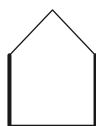
cm 140 ± 2% | " 55 ± 2%



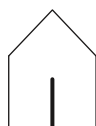
APPLICATIONS



CEILING
|||||



WALL
|||||



FREESTANDING
|||||



DESK
|||||

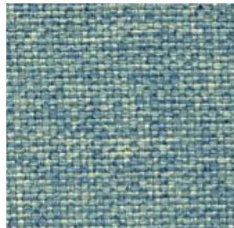


FURNITURE
|||||

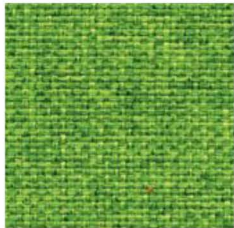
PETfabric.



Gold 4057



Azure 4311



Brilliant green 4460



Bronze 4109



Cream 4515



Sunset 4107



Ice 4365



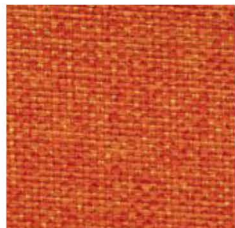
Bright green 4464



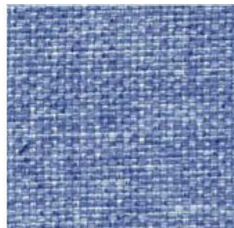
Brick 4211



Sand 4513



Orangina 4105



Sky 4360



Sage 4466



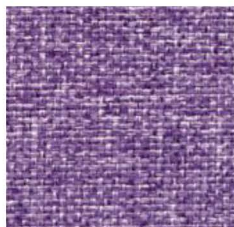
Camo 4312



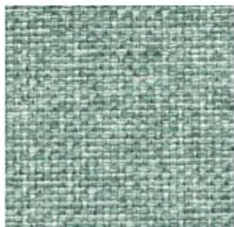
Neutral grey 4511



Poppy 4214



Lilac 4253



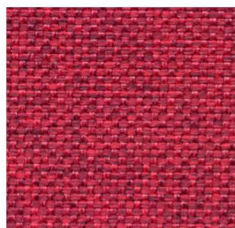
Morning green 4467



Jacket 4559



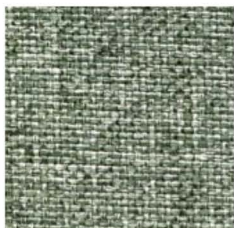
Light grey 4613



Dark red 4210



Dark magenta 4154



Mesh green 4468



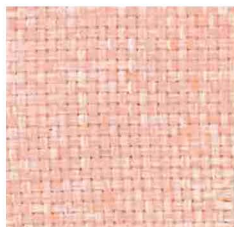
Brown 4558



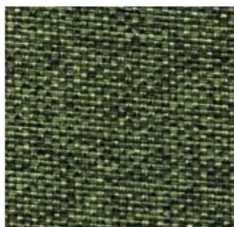
Ash 4614



Antique Rose 4155



Spring morning 4153



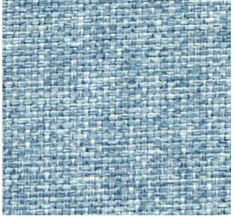
Underbrush 4462



Warm grey 4560



Suit grey 4615



Light blue 4361



Villa 4310



Blue 4313



Tropical 4461

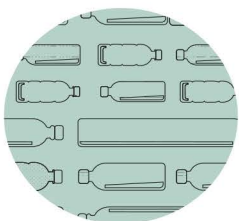


Road 4616



DESIGN YOUR OWN!

* PRINT colour charts



Printable

What's behind?

Sostenibilità . Comfort . Design

La missione di Slalom è quella di partecipare attraverso materiali dalle altissime qualità innovative e tecniche alla creazione di un ambiente sano, dal comfort acustico eccezionale e progettato su misura per le persone. Lo fa attraverso l'impegno per la protezione dell'ambiente e della salute dell'uomo, sviluppando un'ampia gamma di prodotti e soluzioni tailor-made investendo costantemente in funzionalità, durabilità e riciclo.

Sustainability . Comfort . Design

An important mission for Slalom, in compliance with the surrounding environment and people's health. The commitment to protect the environment and human health is a priority in our path to sustainability. Slalom develops its range from the idea that each product has use, durability and recycling as its key. Slalom develops its range from the idea that each product has use, durability and recycling as its key.

#WorkingForQuality

Company Certification



#SupportingSustainability

Slalom is partner of



MEMBER

#SupportingCulture

PEGGY GUGGENHEIM COLLECTION

#SupportingResearch



#SupportingWomen:

75% Female employees

#SocialResponsibility:

Sustainability Report 2020

#CorporateResponsibility:

Check online our Ethic Code



SLALOM S.p.A.