

PRODUCT CATALOG 2025

RELIABLE LIGHT.
RENEWABLE POWER.



streetleaf® 

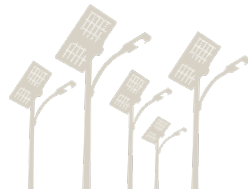


EPPERSON RANCH | 2019

OUR STORY

Born from a large master-planned community, Streetleaf was created by land developers seeking a smarter alternative to traditional grid-tied streetlights.

Headquartered in Tampa Bay and backed by Florida's largest land developer, Streetleaf is on a mission to transform outdoor lighting with reliable, solar-powered solutions that prioritize quality, service, and environmental responsibility.



OVER 12k LIGHTS INSTALLED



2502 N. Rocky Point Drive, Suite 1070, Tampa, FL 33607 | www.streetleaf.com | 813-800-LEAF(5323)

STREET LIGHTS

FOR THE MODERN ERA

Streetleaf provides commercial-grade, solar-powered streetlights for new communities and developments across the U.S. Our lights are fully off-grid, so they stay on during outages and require no trenching, wiring, or utility coordination—saving time and costs.

We deliver turnkey service from installation to monitoring. With 12,000+ lights installed since 2019, Streetleaf helps builders, utilities, and municipalities bring reliable, sustainable lighting to every project while avoiding millions of pounds of CO₂ emissions — and growing.



8x

FASTER TO INSTALL



\$0

DEVELOPMENT COST



100%

CLEAN ENERGY

SERVICE AGREEMENT TURNKEY OPTION



With this option, the Streetleaf team handles all aspects of operation and maintenance, ensuring consistent performance and uninterrupted lighting.

INCLUDED IN SERVICE AGREEMENT



PROJECT PLANNING

- Photometric Design
- Permitting Support



EASY INSTALLATION

- Quick, No Trenching
- At Any Project Stage



24/7 MONITORING

- IoT Connected Devices
- Proactive Responses



ROUTINE MAINTENANCE

- 365 Performance
- Parts Replacements

STARTING AT **\$50**/MONTH



NO UPFRONT COST

Get utility-grade streetlights installed at any stage—planning or build-out—without any upfront investment.



ALL INCLUSIVE PRICING

Our price covers installation, routine and ongoing maintenance, plus 24/7 performance monitoring.



OPTIMAL PERFORMANCE

Backed by millions of hours of real world data, our systems are engineered for optimal, reliable performance.

DIRECT PURCHASE OPTION



With this option, you purchase our high-quality, reliable solar streetlights outright—no ongoing costs, and they can be installed anywhere, anytime.

BI-FACIAL SOLAR PANEL

- Captures reflected light
- 25 year lifespan

LONG-LASTING LITHIUM BATTERIES

- Safe LiFePO4 chemistry
- Upwards of 2000 full cycles
- 10 year lifespan

ALUMINUM POLE

- Direct burial
- Heights from 15-26 feet
- High-grade powder coating

METAL BIRD DETERRENT

- Prevents birds from perching/nesting
- Protects panel from droppings and debris to maintain maximum solar energy absorption

INFRARED MOTION SENSOR

- Dimming capability

BEST IN CLASS LED LIGHTHEAD

- 3000K color temperature
- Consistent light color
- Lasts over 100,000 hours

STARTING AT **\$5,175**



OPTIONAL ADD ON SERVICES

project planning, easy installation, 24/7 monitoring, and routine maintenance

CHOOSING THE RIGHT SMART LIGHT



Streetleaf specializes in bringing reliable and renewable technology to communities. Founded in 2019, we partner with land developers, builders, municipalities, utilities, and HOAs to create safer, greener communities.



Model	streetleaf AVE	streetleaf BLVD	streetleaf PATH
Applications	<ul style="list-style-type: none">• Local roads• Single-lane roads• Amenity lighting• Parks	<ul style="list-style-type: none">• Collector roads• Double-lane roads• Parks• Parking lots	<ul style="list-style-type: none">• Sidewalks• Walkways• Kiosks• Parking lots
Lumens	5400 Lumens	7200 Lumens	700+ Lumens
Battery Capacity	820 Wh	1230 Wh	192 Wh
Power of PV Module	150 W	220 W	80 W (TBD)
Color Temp.	3000K	3000K	3000K
Storm Resilient	winds up to 160 mph	winds up to 160 mph	n/a
Wildlife Friendly	Turtle safe	Turtle safe	n/a
DarkSky	Approved	Approved	n/a
Finish Options	Aluminum black	Aluminum black	Aluminum black Aluminum bronze
Installation Type	Direct burial	Direct burial	Direct pour or surface mount
Warranty	5 year	5 year	1 year

All of our lighting systems are designed to meet IES Standards and local codes.

ENGINEERED FOR EXCELLENCE

REMOTE MONITORING

- IoT-connected for smart street lighting.
- Enables proactive monitoring and adjustments, even during inclement weather events.
- Delivers valuable performance intel.

SOLAR PANEL

- Bi-facial solar panel captures sunlight from above and reflected light from the road.
- Built to IK08 strength standard for impact resistance.
- Rated IP66 for water and dust protection.
- Lifespan of up to 25 years with minimal performance degradation.
- Available in sizes from 80W to 250W per light.
- All wiring is internal, maintaining the IP66 rating.
- Solar panels are sized for optimal energy generation.

LITHIUM BATTERIES

- LiFePO4 (Lithium Iron Phosphate) batteries.
- Long Lifespan: Over 2,000 full charge cycles.
 - ◊ Example: An 820Wh pack can last over 10 years.
- High depth of discharge coupled with quick recharge rate means less downtime.
- Maintains high performance of long lifespan.
- Batteries are sized for reliable energy availability.
- We use multiple battery packs in our systems to suit project needs.
- Our weather resilient lights can operate for 5+ days without charging, even in inclement weather.

MOTION SENSOR

- DISS and Panasonic Passive Infrared Sensors (PIR) boost power to 100% output during off-peak hours when less light is needed.
- Sensors are triggered by movement of people or vehicles in the area.

ALUMINUM POLES

- Our poles use a direct burial design for quick, easy installation.
- Available in heights from 15 to 26 ft.
- Constructed from durable 6063 T6 aluminum.
- Finished with high-grade powder coating for long-lasting performance.

LED LIGHTHEAD

- We use best-in-class LED chips with 3-step binning.
- Accurate and consistent CCT (Correlated Color Temperature) along the black body curve.
- Delivers a true 3000K light without mixing different CCTs.
- Provides consistent and appealing light color.
- High CRI (Color Rendering Index) over 70 for clear nighttime visibility.
- Most products are DarkSky compliant for reduced glare and shielded light output.
- LED chips are tested to last over 100,000 hours.
- Turtle-safe lights are available by request.

DESIGN OPTIONS

MODERN DESIGN | CLASSIC DESIGN

We offer two innovative solar streetlight models—Modern and Classic—to suit your aesthetic preference. Each model comes in two sizes, ideal for a range of applications from streets and amenities to parks and pathways.

Modern Lights

MODERN DESIGN,
ENDURING DEPENDABILITY

Engineered for both style and strength, our Modern lights are precision-crafted to ensure high performance and long-term durability. DarkSky approved.



Streetleaf AVE
modern
for local
single-lane roads

Streetleaf BLVD
modern
for collector
double-lane roads



Classic Lights

CLASSIC FORM,
NEXT-GEN FUNCTION

With a bell-shaped fixture and crozier-arched arm, our Classic lights offer timeless charm, soft candle-like glow, and glare-blocking louvers.



Streetleaf AVE
classic
for local
single-lane roads

Streetleaf BLVD
classic
for collector
double-lane roads



streetleaf[®]

AVE modern

CE IP66 | IK08

Streetleaf AVE is the next generation of solar technology with an extended battery for reliable performance, even during storms. It is programmable to conserve power during low-traffic hours and motion-activated to restore full brightness when needed.



HIGH
EFFICIENCY
CONTROLLER



LiFePO4
BATTERY



HIGH QUALITY
LED



INFRARED
MOTION
SENSOR



IP66



WIRELESS



Certified by DarkSky.org

PV Module Physical Parameters

Power of PV Module (watts)	150 W
Battery Capacity (watt/hours)	820 Wh
Net Weight of Product	58.42 lbs
Dimensions of Product Panel (inches)	45.16 in L 28.39 in W 13.27 in H
Light Photosensitivity (lx)	60-90

Environmental Requirements

Charge Temperature	32 to 124° F
Discharge Temperature	68 to 140° F
Storage Temperature (<3 months)	68 to 113° F

Mounting

EPA (Effective Projected Area)	4.52 ft ²
APA (Actual Projected Area)	3.77 ft ²
Wind Load Range	150 mph

LED Module Parameters

Light Output (watts)	30 W
Qty. of LED Chips and Type	40 Lumileds Luxeon 5050s
Typical Luminous Flux (lumens)	5400 lm
Color Temperature (kelvin)	3000 K
Motion Sensor	PIR as part of a Dynamic Intelligent Sensing System
Dimension of Product Light	25.6 in L 7.1 in W 3.8 in H
Input Voltage (volts)	22 VDC
Net Weight of Product	8.8 lbs

Wind Load & Mounting Recommendations

EPA (Effective Projected Area)	0.57 ft ²
APA (Actual Projected Area)	0.47 ft ²
Recommended Installation Height	16-26 ft
Recommended Installation Distance	100-180 ft

APPLICATIONS

- Local Roads
- Single-Lane Roads
- Amenity Lighting
- Parks



Optional shielding accessory available by request.

*The light source contained in this luminaire shall only be replaced by the manufacturer or his service agent or a similar qualified person.

*The torque setting for any bolts or screws used to secure the luminaire to the bracket is 14 N/m.

*For outdoor use only!

REV09302025

streetleaf®

AVE classic

CE IP66 | IK08

The classic style Streetleaf AVE is the next generation of solar technology with an extended battery for reliable performance, even during storms. It is programmable to conserve power during low-traffic hours and motion-activated to restore full brightness when needed.

Featuring a bell-shaped fixture, these lights combine elegance and resilience with a traditional candle glow, crosier arched arm, and glare blocking louvers.



HIGH
EFFICIENCY
CONTROLLER



LiFePO4
BATTERY



HIGH QUALITY
LED



IP66



WIRELESS

PV Module Physical Parameters

Power of PV Module (watts)	150 W
Battery Capacity (watt/hours)	820 Wh
Net Weight of Product	58.42 lbs
Dimensions of Product Panel (inches)	45.16 in L 28.39 in W 13.27 in H
Light Photosensitivity (lux)	60-90 lx

Environmental Requirements

Charge Temperature	32 to 124° F
Discharge Temperature	68 to 140° F
Storage Temperature (<3 months)	68 to 113° F

Mounting

EPA (Effective Projected Area)	4.52 ft²
APA (Actual Projected Area)	3.77 ft²
Wind Load Range	150 mph

LED Module Parameters

Light Output (watts)	30 W
Qty. of LED Chips and Type	40 Lumileds Luxeon 5050s
Typical Luminous Flux (lumens)	5400 lm
Optional Light Distribution	TSH/ T2L
Color Temperature (kelvin)	3000 K
Motion Sensor	PIR as part of a Dynamic Sensing System
Dimension of Product Light	25.6 in L 7.1 in W 3.8 in H
Input Voltage (volts)	22 VDC
Net Weight of Product	8.8 lbs

Wind Load & Mounting Recommendations

EPA (Effective Projected Area)	0.57 ft²
APA (Actual Projected Area)	0.47 ft²
Recommended Installation Height	16-26 ft
Recommended Installation Distance	100-180 ft

APPLICATIONS



- Local Roads
- Single-Lane Roads
- Amenity Lighting
- Parks



REV09302025

*The light source contained in this luminaire shall only be replaced by the manufacturer or his service agent or a similar qualified person.

*The torque setting for any bolts or screws used to secure the luminaire to the bracket is 14 N/m.

*For outdoor use only!

streetleaf®

BLVD modern

CE IP66 | IK08

Streetleaf BLVD is a larger and brighter light designed for collector roads, and areas where you want more light. It is programmable to conserve power during low-traffic hours and motion-activated to restore full brightness when needed.



HIGH
EFFICIENCY
CONTROLLER



LiFePO4
BATTERY



HIGH QUALITY
LED



INFRARED
MOTION
SENSOR



IP66



WIRELESS



Certified by DarkSky.org

PV Module Physical Parameters

Power of PV Module (watts)	220 W
Battery Capacity (watt/hours)	1230 Wh
Net Weight of Product	70.54 lbs
Dimensions of Product Panel (inches)	42 in L 45 in W 13 in H
Light Photosensitivity (lux)	30 lx

Environmental Requirements

Charge Temperature	32 to 123° F
Discharge Temperature	-4 to 140° F
Storage Temperature (<3 months)	-4 to 113° F
Storage Temperature (<3 months)	-4 to 77° F

Mounting

EPA (Effective Projected Area)	6.76 ft ²
APA (Actual Projected Area)	5.64 ft ²
Wind Load Rate	150 mph

LED Module Parameters

Light Output (watts)	40 W
Qty. of LED Chips and Type	2x 40 (80 total)
Typical Luminous Flux (lumens)	7200 lm
Color Temperature (kelvin)	3000 K
Motion Sensor	PIR as part of a Dynamic Intelligent Sensing System
Dimension of Product Light	25.6 in L 7.1 in W 3.8 in H
Net Weight of Product	11.02 lbs

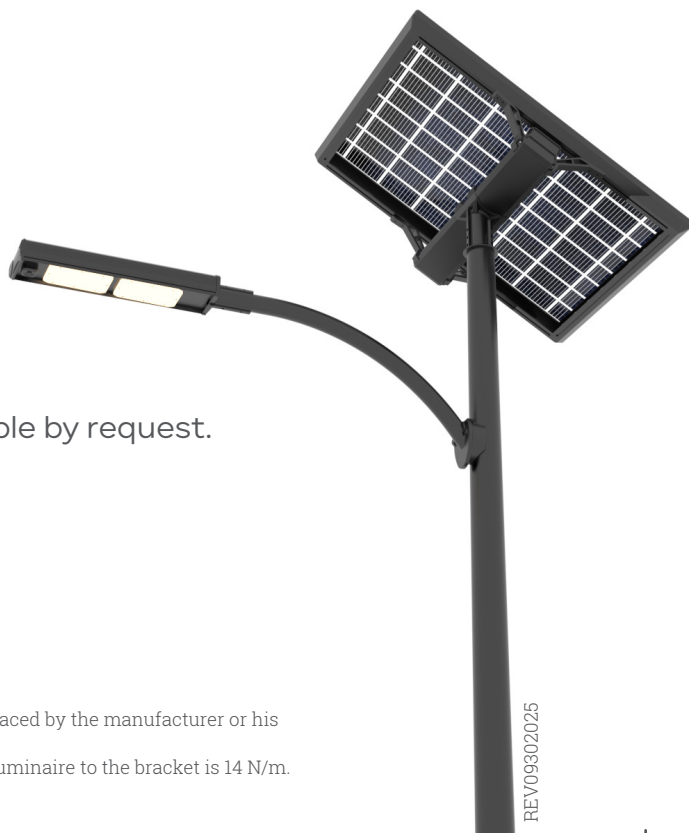
Wind Load & Mounting Recommendations

EPA (Effective Projected Area)	0.70 ft ²
APA (Actual Projected Area)	0.58 ft ²
Recommended Installation Height	23-32 ft
Recommended Installation Distance	150-230 ft

APPLICATIONS



- Collector Roads
- Two-Lane Roads
- Parks
- Parking Lots



Optional shielding accessory available by request.

*The light source contained in this luminaire shall only be replaced by the manufacturer or his service agent or a similar qualified person.

*The torque setting for any bolts or screws used to secure the luminaire to the bracket is 14 N/m.

*For outdoor use only!

REV09302025

streetleaf®

BLVD classic

CE IP66 | IK08

The classic style Streetleaf BLVD is a larger and brighter light designed for collector roads, and areas where you want more light. It is programmable to conserve power during low-traffic hours and motion-activated to restore full brightness when needed.

Featuring a bell-shaped fixture, these lights combine elegance and resilience with a traditional candle glow, crosier arched arm, and glare blocking louvers.

PV Module Physical Parameters

Power of PV Module (watts)	220 W
Battery Capacity (watt/hours)	1230 Wh
Net Weight of Product	70.54 lbs
Dimensions of Product Panel (inches)	42 in L 45 in W 13 in H
Light Photosensitivity (lux)	30 lx

Environmental Requirements

Charge Temperature	32 to 123° F
Discharge Temperature	-4 to 140° F
Storage Temperature (<3 months)	-4 to 113° F
Storage Temperature (<3 months)	-4 to 77° F

Mounting

EPA (Effective Projected Area)	6.76 ft²
APA (Actual Projected Area)	5.64 ft²
Wind Load Rate	150 mph

LED Module Parameters

Light Output (watts)	40 W
Qty. of LED Chips and Type	2x 40 (80 total)
Typical Luminous Flux (lumens)	7200 lm
Optional Light Distribution	TSH/ T2L
Color Temperature (kelvin)	3000 K
Motion Sensor	PIR as part of a Dynamic Sensing System
Dimension of Product Light	25.6 in L 7.1 in W 3.8 in H
Net Weight of Product	11.02 lbs

Wind Load & Mounting Recommendations

EPA (Effective Projected Area)	0.70 ft²
APA (Actual Projected Area)	0.58 ft²
Recommended Installation Height	23-32 ft
Recommended Installation Distance	150-230 ft

APPLICATIONS



- Collector Roads
- Two-Lane Roads
- Parks
- Parking Lots



*The light source contained in this luminaire shall only be replaced by the manufacturer or his service agent or a similar qualified person.

*The torque setting for any bolts or screws used to secure the luminaire to the bracket is 14 N/m.

*For outdoor use only!

REV09302025



HIGH
EFFICIENCY
CONTROLLER



LiFePO4
BATTERY



HIGH QUALITY
LED



IP66



WIRELESS

OUR LIGHTS STAY ON WHEN THE GRID GOES OFF



Since 2019, **Streetleaf** has been lighting the way to a **more resilient Florida** with solar-powered, utility-grade streetlights engineered to endure Category 5 hurricane winds.



RELIABLE LIGHTS.
RENEWABLE POWER.

A close-up photograph of a Streetleaf solar streetlight at night. The light fixture is illuminated, casting a warm glow. Above the light, a solar panel is mounted on the same pole. The background is a dark, clear night sky.

POWERING PIECE OF MIND

Tested for extreme conditions and trusted across Florida, Streetleaf delivers uninterrupted performance when it matters most.



2502 N. Rocky Point Drive, Suite 1070, Tampa, FL 33607 | www.streetleaf.com | 813-800-LEAF(5323)

SUSTAINABLE FOR A GREENER FUTURE



INCREASED ENERGY EFFICIENCY

Operating **50 Streetleaf lights** saves as much electricity as **two average households** per year.



OFFSETTING EMISSIONS WITH EVERY INSTALLATION

Planting **one tree** for every Streetleaf light installed **offsets nearly 150,000 pounds** of coal each year.



REDUCED CARBON FOOTPRINT

Streetleaf streetlights have helped offset **more than 4 million pounds of CO2**—and counting.



RELIABLE LIGHTS.
RENEWABLE POWER.



Certified by DarkSky.org

EVERY LIGHT MAKES A DIFFERENCE

By choosing Streetleaf, you're helping protect the environment, increase the economic value of your project, and promote a safer, more sustainable community."

OUR STREETLIGHTS ARE WILDLIFE FRIENDLY



A SMART, SAFE SOLUTION FOR COASTAL AREAS

With a peak wavelength of 600 nanometers, this light is safe for sea turtles while providing enough visibility for people.

Our advanced streetlights are eco-friendly, storm-resistant, and reliable—delivering quality lighting without disrupting your schedule or surroundings.



Certified by DarkSky.org



AMBER LED LIGHTHEAD

- Shielded for DarkSky compliance
- NRTL verified rating on all chips
- Nanometer range nearly invisible to turtles

BI-FACIAL SOLAR PANEL

- High impact resistance
- Self-washing with rain

LITHIUM BATTERY

- LiFePO4
- 10 year lifespan
- 3-5 day autonomy

INFRARED MOTION SENSOR

- Dimming capability

ALUMINUM POLE

- Direct burial
- Heights from 15-26 feet
- High-grade powder coating

SMART CONTROL NODE

- 24/7 remote monitoring
- Performance data



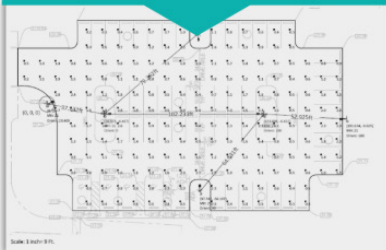
RELIABLE LIGHTS.
RENEWABLE POWER.

As Easy as 1, 2, 3

LET'S **LIGHT UP** YOUR PROJECT

1

Photometrics
& Proposal



2

Estimate &
Contract

(NO UP FRONT COSTS)



3

Quick
Installation

LIGHTS ON!



\$0

DEVELOPMENT COST



\$50 MIL

SAVED



2502 N. Rocky Point Drive, Ste 1070
Tampa, FL 33607

813-800-LEAF (5323)

www.streetleaf.com



RELIABLE LIGHTS.
RENEWABLE POWER.



ILLUMINATE THE FUTURE

Book a demo
or request a
quote—see just
how simple it is
to power your
next project with
Streetleaf.