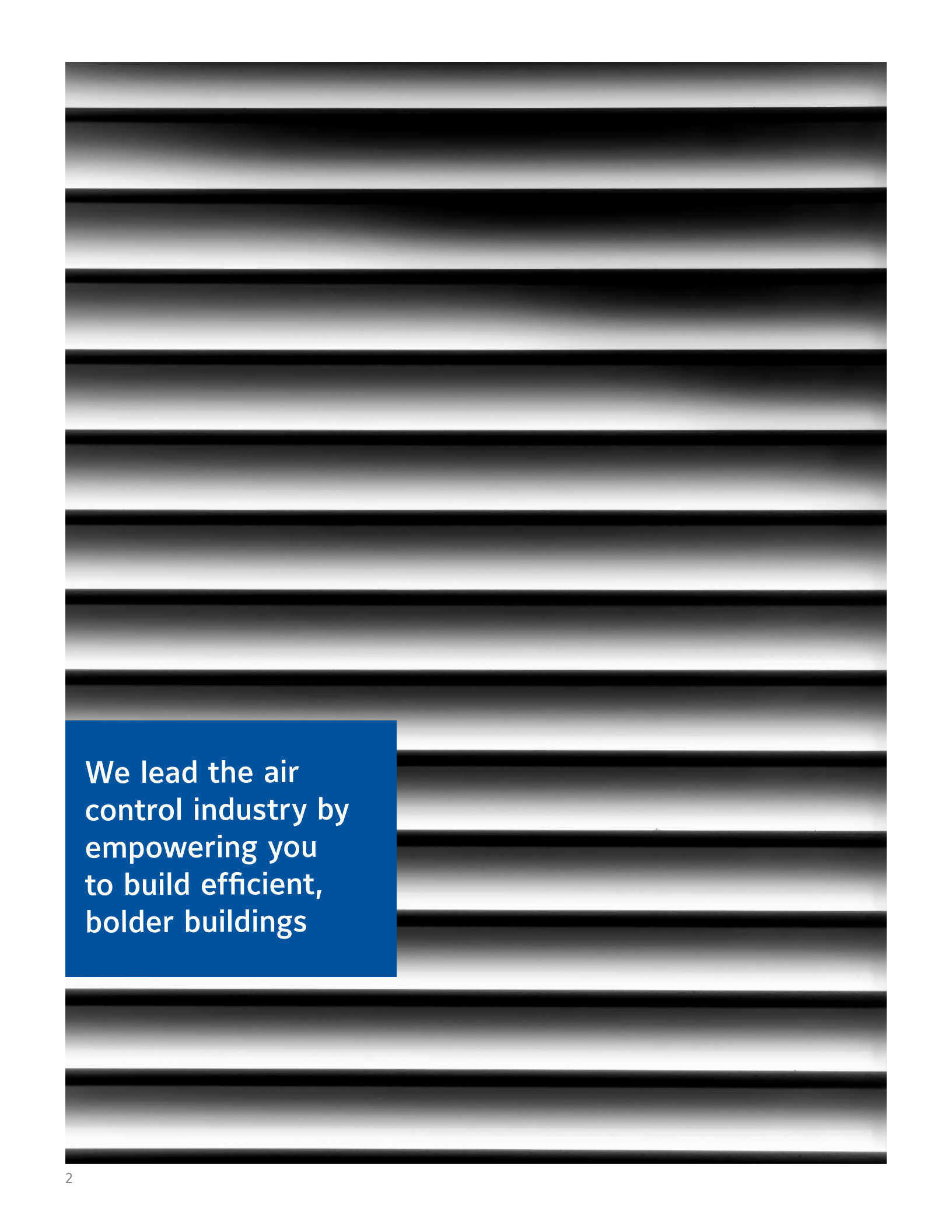




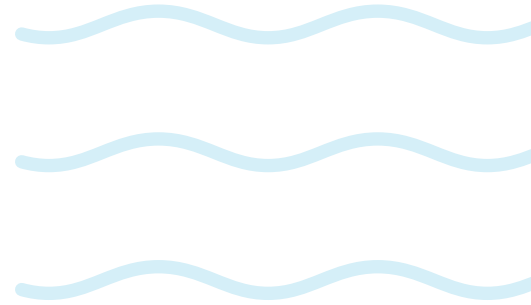
Architectural Louver Catalog

Louvers, sunshades and equipment screens





We lead the air
control industry by
empowering you
to build efficient,
bolder buildings



CONTENT

4	OUR HISTORY
6	ARCHITECTURAL GALLERY
8	BLADE STYLES
13	ADJUSTABLE LOUVERS
19	STATIONARY LOUVERS
25	COMBINATION LOUVERS
31	SIGHT-PROOF LOUVERS
37	WIND-DRIVEN RAIN LOUVERS
43	GLAZING LOUVERS
49	ACOUSTICAL LOUVERS
55	HURRICANE LOUVERS
61	SPECIALTY LOUVERS
67	PENTHOUSE LOUVERS
73	SCREENS AND GRILLES
79	SUN CONTROL SUNSHADES
84	LOUVER TESTING AND CERTIFICATION
85	LOUVER SHAPES
86	FINISHES
90	CONTACT RUSKIN

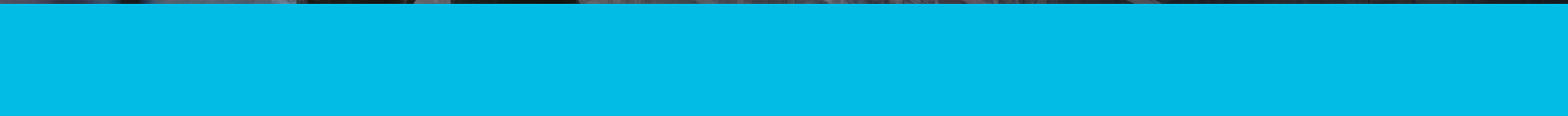
RUSKIN WAS FOUNDED IN THE RUSKIN HEIGHTS AREA OF KANSAS CITY IN 1958

From our humble beginnings with a handful of employees building fire dampers, Ruskin has grown into the largest and most innovative manufacturer of air control solutions with 29 production and office locations worldwide. We are the leading manufacturer of air and sound control and architectural products for the heating, ventilating and air conditioning (HVAC) and industrial markets. Ruskin is also the worldwide leader in dampers for tunnel ventilation, process applications, and wastewater treatment facilities and has supplied engineered equipment on major projects throughout the world. In 2014, Ruskin was acquired by Johnson Controls. Ruskin is part of the Air Systems Division of Johnson Controls, a leading provider of innovative air distribution and ventilation solutions for residential and non-residential buildings as well as air movement and control solutions for industrial and infrastructure applications. With the addition of manufacturing in China, the Middle East, and India in recent years, the group has leveraged its global brands and increased presence overseas.





Our History



ARCHITECTURAL GALLERY



1



2



3



4



5



6



7



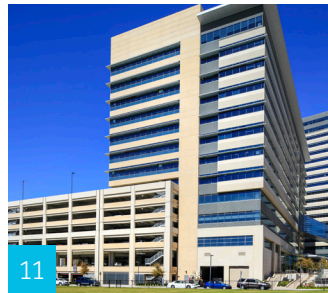
8



9



10



11



12



13



14



15



16

JOB SITES

1. The Shops at Clearfork
2. Panera Bread®
3. Renaissance® Hotel
4. State Farm Insurance™ Headquarters
5. Medical City® Dallas
6. Baylor Charles A. Sammons Cancer Center
7. Omni® Hotel Convention Center
8. Gables® Park 17
9. Parkview at 1920 McKinney
10. State Farm™ Insurance Headquarters
11. State Farm™ Insurance Headquarters
12. State Farm™ Insurance Headquarters
13. Renaissance® Hotel
14. NorthShore University Health Sys., Skokie Hosp
15. Memorial Union, Emporia State University
16. Hess Tower at 1501 McKinney



17



18



19



20



21



22



23



24



25



26



27



28



29



30



31



32

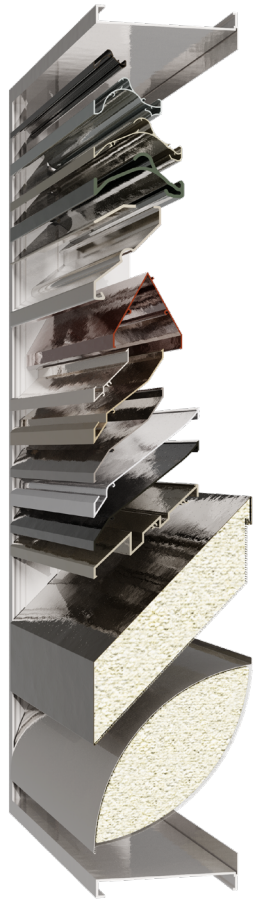
- 17. St. Louis Science Center
- 18. Target Field™, Minnesota Twins™ Stadium
- 19. Orlando Health®, Dr. P. Phillips Hospital
- 20. Nixon-Smiley High School

- 21. M&T Bank
- 22. Emerson™ Data Center
- 23. George W. Bush Presidential Center
- 24. Gates® Corporation Headquarters

- 25. Kapolei High School
- 26. Fort Sam Houston
- 27. Ventura College
- 28. Curaçao International Airport

- 29. South View Middle School
- 30. Thompson Library, Ohio State University
- 31. Sidney & Lois Eskenazi Hospital
- 32. Hess Tower at 1501 McKinney

HORIZONTAL BLADES



BLADE STYLES

A louver's blade style will determine the louver's performance and purpose. Non-drainable blades are favored by the architectural community because these blades give a louver a continuous sight line that is architecturally pleasing. Drainable blades help to channel water toward the jambs of a louver and down chutes built into the jambs. Wind-driven rain-style blades offer drainable protection and their design keeps wind-driven rain from infiltrating the louver. V-blades and Y-blades can be used as a sight screen to help hide equipment along with providing ventilation. Acoustical blades have an acoustical filler inside that helps to reduce noise.

Ruskin has more than 130 louver models and each one utilizes blades that determine the performance and purpose of the louver. This means Ruskin is sure to have a louver model that is right for your application.

SINUSOIDAL



EME220DD
WIND-DRIVEN RAIN BLADE

The EME220DD Stationary Wind-Driven Rain Louver has a two-inch deep frame, sight-proof blades, a 43 percent free area, and great pressure drop performance.



- ▶ 99% effective
- ▶ 2" frame depth
- ▶ 43% free area
- ▶ Sightproof
- ▶ Economical



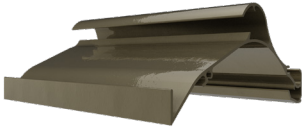
EME420DD
WIND-DRIVEN RAIN BLADE

The EME420DD Stationary Wind-Driven Rain Louver has a four-inch deep frame, sight-proof blades, 40 percent free area, AMCA certification for air and water performance with a maximum 1250 fpm water penetration, and 120-inch-wide continuous blades.



- ▶ 99% effective
- ▶ 4" frame depth
- ▶ 40% free area
- ▶ Sightproof
- ▶ Continuous blades

SINUSOIDAL



EME520DD
WIND-DRIVEN RAIN BLADE

The EME520DD Wind-Driven Rain Resistant Louver has a five-inch deep frame and 20° blade angle, is AMCA listed for 540 Basic Protection, has a 47 percent free area, excellent pressure drop performance, low maintenance, and high corrosion resistance.



- ▶ 20° blade angle
- ▶ 5" frame depth
- ▶ 47% free area
- ▶ 540 protection
- ▶ Excellent pressure drop



XP500WD
FEMA COMPLIANT WIND-DRIVEN RAIN BLADE

Introducing the XP500WD wind-driven rain FEMA louver, the first louver to provide both FEMA impact protection and Class A wind-driven rain protection. Featuring an innovative patent design, the XP500WD affords designers two louvers for the price of one.



- ▶ Patent
- ▶ FEMA compliant
- ▶ UI listed
- ▶ Economical
- ▶ 2 In 1 protection

ADJUSTABLE

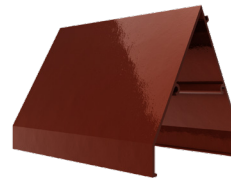


AFG40
INDUSTRIAL FIBERGLASS BLADE

The AFG40 Fibre-Aire Adjustable Fiberglass Louver is a corrosion-resistant louver for harsh environments. It features a four-inch deep frame, face linkage, bird screen, fiberglass and epoxy construction with Monel fasteners.

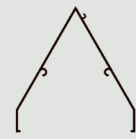


- ▶ Fiberglass
- ▶ 4" frame depth
- ▶ Max. temp. 200°F
- ▶ Adjustable
- ▶ Corrosion resistant



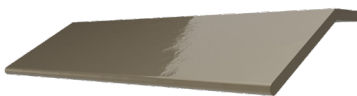
ELF40V
STATIONARY BLADE

The ELF40V Stationary Louver has a four-inch-deep frame, sight-proof blades, a 35 percent free area, and is architecturally styled with hidden mullions to offer a continuous line appearance.



- ▶ 60° blade angle
- ▶ 4" frame depth
- ▶ 35% free area
- ▶ Sightproof
- ▶ Architecturally styled

THIN LINE



ET125-30
THIN LINE BLADE

The ET125 and ET125-30 louver(s) are 1¼" deep thin line stationary louver(s), primarily used for decorative and PTAC applications where water penetration is not a concern.



- ▶ Aluminum build
- ▶ 1¼" frame depth
- ▶ 63% free area
- ▶ Economical
- ▶ Architecturally styled



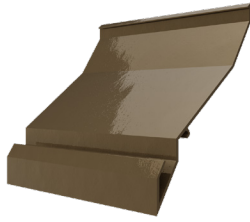
ELF211D
STATIONARY BLADE

The ELF211D is a two-inch deep stationary louver featuring a 38 percent free area with a high-performance frame system and a drainable head to help collect and remove water.



- ▶ Aluminum build
- ▶ 2" frame depth
- ▶ 38% free area
- ▶ Low maintenance
- ▶ Excellent performance

DRAINABLE



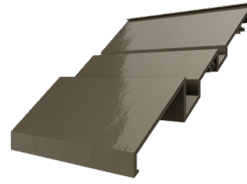
ELF375DX
DRAINABLE BLADE

The ELF375DX Stationary Louver has a four-inch deep frame, a 54 percent free area, and all-aluminum construction for low maintenance and high corrosion resistance.

- ▶ Corrosion resistant
- ▶ 4" frame depth
- ▶ 54% free area
- ▶ Aluminum build
- ▶ Excellent performance



DUAL-DRAINABLE



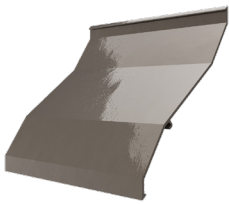
ELF6425DD
CONTINUOUS DRAINABLE BLADE

The ELF6425DD Stationary Louver has a six-inch-deep frame, a 51 percent free area, recessed mullions at section breaks, and is built for low maintenance and high corrosion resistance.

- ▶ 41 1/2° blade angle
- ▶ 6" frame depth
- ▶ 51% free area
- ▶ Low maintenance
- ▶ Continuous drainable blades



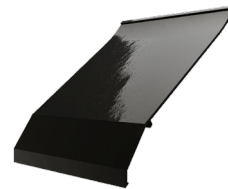
NON-DRAINABLE



ELF375X
NON-DRAINABLE BLADE

The ELF375X Stationary Louver has a four-inch-deep frame, a 54 percent free area, AMCA certification for air and water performance with a maximum 803 fpm water penetration, and 120-inch-wide continuous blades.

- ▶ 37 1/2° blade angle
- ▶ 4" frame depth
- ▶ 54% free area
- ▶ Low maintenance
- ▶ Continuous blades



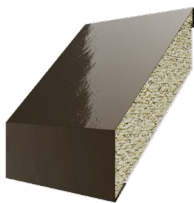
ELF6375X
NON-DRAINABLE BLADE

The ELF6375X Stationary Louver has a six-inch-deep frame, a 37 1/2° blade angle, a 55 percent free area, and excellent water penetration performance.

- ▶ 37 1/2° blade angle
- ▶ 6" frame depth
- ▶ 55% free area
- ▶ Low maintenance
- ▶ Best value



ACOUSTICAL



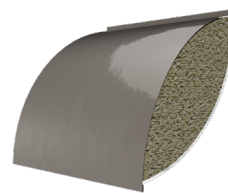
ACL1245
ACOUSTICAL BLADE

The ACL1245 Acoustical Rain Louver has 12-inch-deep blades, a 45° blade angle, and is AMCA certified for air, water, and sound performance. Available in steel or aluminum.

- ▶ Attenuating blades
- ▶ 12" blade depth
- ▶ Steel/aluminum build
- ▶ AMCA 511 listed
- ▶ 60" single sections



ACOUSTICAL AIRFOIL



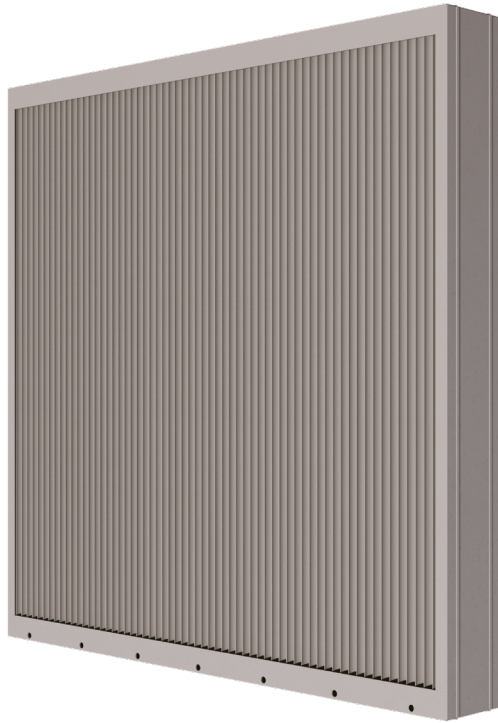
ACL1245AF
ACOUSTICAL AIRFOIL BLADE

The ACL1245AF Acoustical Louver is 12" deep with airfoil blades and 45 blade angles. It features a 23 percent free area, and is AMCA certified for air, water, and sound performance.

- ▶ Attenuating blades
- ▶ 12" blade depth
- ▶ Architecturally styled
- ▶ AMCA 511 listed
- ▶ 60" single sections



VERTICAL BLADES



SINUSOIDAL



EME3625(DFL)
WIND-DRIVEN RAIN BLADE

The EME3625(DFL) Wind-Driven Rain Resistant Stationary Louver has a three-inch-deep frame and vertical blades. It is also AMCA 550 listed for high-velocity wind-driven rain, and has a 48 percent free area.

- ▶ 99% effective
- ▶ 3" frame depth
- ▶ 53% free area
- ▶ Vertical blades
- ▶ Economical

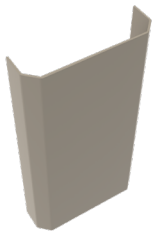


EME6625(D)
WIND-DRIVEN RAIN BLADE

The EME6625(D) Stationary Rain-Resistant Louver has a six-inch-deep frame and vertical blades, a 38 percent free area, is AMCA 540/550 listed, and has excellent pressure drop performance.

- ▶ 99% effective
- ▶ 6" frame depth
- ▶ 38% free area
- ▶ Vertical blades
- ▶ Excellent pressure drop

SIGHT-PROOF



L5361
SAND REMOVAL BLADE

The L5361 Stationary Louver is a four-inch-deep sand removal louver. It has a 25 percent free area, 90 percent particulate removal efficiency, sight-proof blades, and is tested to both AMCA 500-L and ASHRAE Standard 52-76.

- ▶ Sand removal
- ▶ 4" frame depth
- ▶ 25% free area
- ▶ Vertical blades
- ▶ 90% particle efficiency

DUAL SINUSOIDAL



EME6325D
WIND-DRIVEN RAIN BLADE

The EME6325D Hurricane Louver is Miami-Dade- and Florida-approved and has a six-inch-deep frame with vertical blades, a 38 percent free area, and a 99 percent effective ratio for wind-driven rain performance.

- ▶ 99% effective
- ▶ 6" frame depth
- ▶ 38% free area
- ▶ 540/550 listed
- ▶ Vertical blades



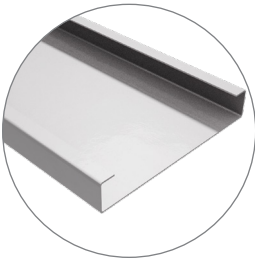


Adjustable Louvers

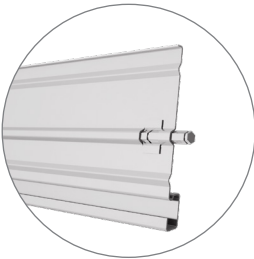
ADJUSTABLE LOUVERS



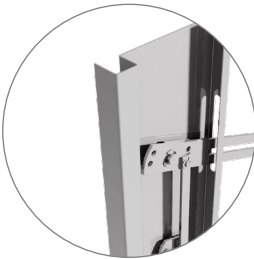
COMPONENT DETAILS



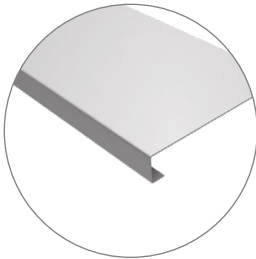
Head



blade



Jamb

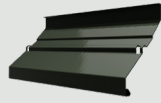


Sill



L745
STEEL NON-DRAINABLE ADJUSTABLE LOUVER

The L45 Steel Non-Drainable Adjustable Louver has a four-inch-deep frame, a 45° blade angle, and tight shut-off for excellent weather protection.



- ▶ Seals tightly
- ▶ 4" frame depth
- ▶ 45° blade angle
- ▶ Rugged steel construction



LM6375D
STEEL DRAINABLE ADJUSTABLE LOUVER

The LM6375D Steel Drainable Adjustable Louver has a six-inch-deep frame, listed for AMCA 511, a 51 percent free area, and includes stainless steel bearings for smooth operation.

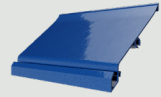


- ▶ AMCA 511 listed
- ▶ 6" frame depth
- ▶ 51% free area
- ▶ 37½° blade angle
- ▶ Rugged steel construction



ELM6DW
ADJUSTABLE WAREHOUSE LOUVER

The ELM6DW Adjustable Warehouse Louver has a six-inch-deep frame, adjustable blades, a 56 percent free area, and is AMCA certified for water penetration and air performance.

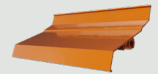


- ▶ Low leakage
- ▶ Low torque
- ▶ 56% free area
- ▶ Drainable
- ▶ AMCA certified



ELM90
ADJUSTABLE LOUVER

The ELM90 Adjustable Louver has a six-inch-deep frame, blade range of operation is 70°, a 58 percent free area, and excellent protection against weather exposure.

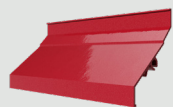


- ▶ Opens 70°
- ▶ 6" frame depth
- ▶ 58% free area
- ▶ Low torque
- ▶ Concealed blade linkage



ELM811
ADJUSTABLE LOUVER

The ELM811 adjustable louver has a 4" deep frame with a blade range of operation is 45° open and a 38 percent free area, with excellent protection against weather exposure.

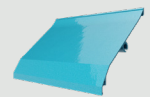


- ▶ Opens 45°
- ▶ 4" frame depth
- ▶ 38% free area
- ▶ Low torque
- ▶ Aluminum build



ELM6375X
NON-DRAINABLE ADJUSTABLE LOUVER

The ELM6375X Non-Drainable Adjustable Louver has a 6" deep frame with a blade range of operation to 37½° open and a 54 percent free area with low operating torque for tight closure.



- ▶ Opens 37½°
- ▶ 6" frame depth
- ▶ 54% free area
- ▶ Low torque
- ▶ Aluminum build



ADJUSTABLE LOUVERS

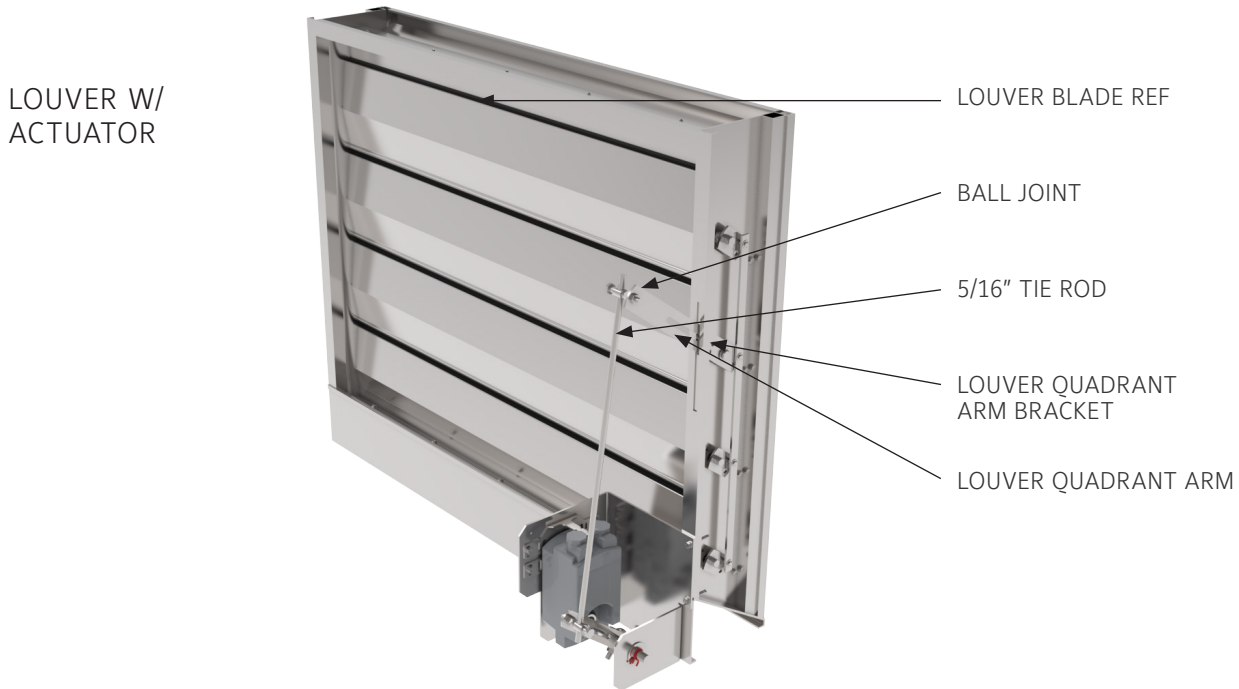
Adjustable louvers are similar to combination louvers as the adjustable blades open and close. These louvers act similarly to dampers in that they can be opened and completely closed. Like combination louvers, models can either be fitted with non-drainable or drainable blades, which give the building envelope added protection against water penetration.

Model	Min. Dim.	Max. Dim.	Depth	Blade Angle	Blade Style	Blade Orientation	Free Area	AMCA Certification	
								Air Perf.	Water Penetration
ELM6375DX	12" x 12"	Unlimited	6"	37½°	Drainable	Horizontal	56%	✓	✓
ELM6375X	12" x 12"	Unlimited	6"	37½°	Non-Drainable	Horizontal	54%	✓	✓
ELM6DW	12" x 12"	Unlimited	6"	37½°	Drainable	Horizontal	56%	✓	✓
ELM811	12" x 12"	Unlimited	4"	45°	Non-Drainable	Horizontal	38%	-	-
ELM811D	12" x 12"	Unlimited	4"	45°	Drainable	Horizontal	37%	-	-
ELM811H	12" x 12"	Unlimited	4"	45°	Non-Drainable	Horizontal	38%	-	-
ELM90	12" x 12"	Unlimited	6"	70°	Non-Drainable	Horizontal	58%	-	-
ELM90H	12" x 12"	Unlimited	6"	70°	Non-Drainable	Horizontal	58%	-	-
ELM90HFA	12" x 12"	Unlimited	6"	90°	Non-Drainable	Horizontal	74%	✓	-
L6745	12" x 12"	Unlimited	6"	45°	Non-Drainable	Horizontal	43%	-	-
L745	12" x 12"	Unlimited	4"	45°	Non-Drainable	Horizontal	38%	-	-
LM375D	12" x 12"	Unlimited	4"	37½°	Drainable	Horizontal	44%	✓	✓
LM6375D	12" x 12"	Unlimited	6"	37½°	Drainable	Horizontal	51%	✓	✓
LM6811	12" x 12"	Unlimited	4"	90°	Non-Drainable	Horizontal	76%	-	-

*For the most current catalog information please visit www.ruskin.com or use the Ruskin Online Louver Selection Tool.

*No louver shapes available.

LOUVER WITH ACTUATOR DETAIL



ACTUATOR ENCLOSURE MODELS



RUSN4X-L

NEMA 4X Damper Actuator
Weather Shield - Fits Large Size
RUS Series Actuator Models



RUSN4X-SM

NEMA 4X Damper Actuator
Weather Shield - Fits the Small
and Medium Size RUS Series
Actuator Models



RUS-N4X

Nema 4x Damper Actuator
Weather Shield Fits Multiple
Brand Electric Actuator Models
Which Include Johnson Controls,
Belimo, Honeywell, and Siemens

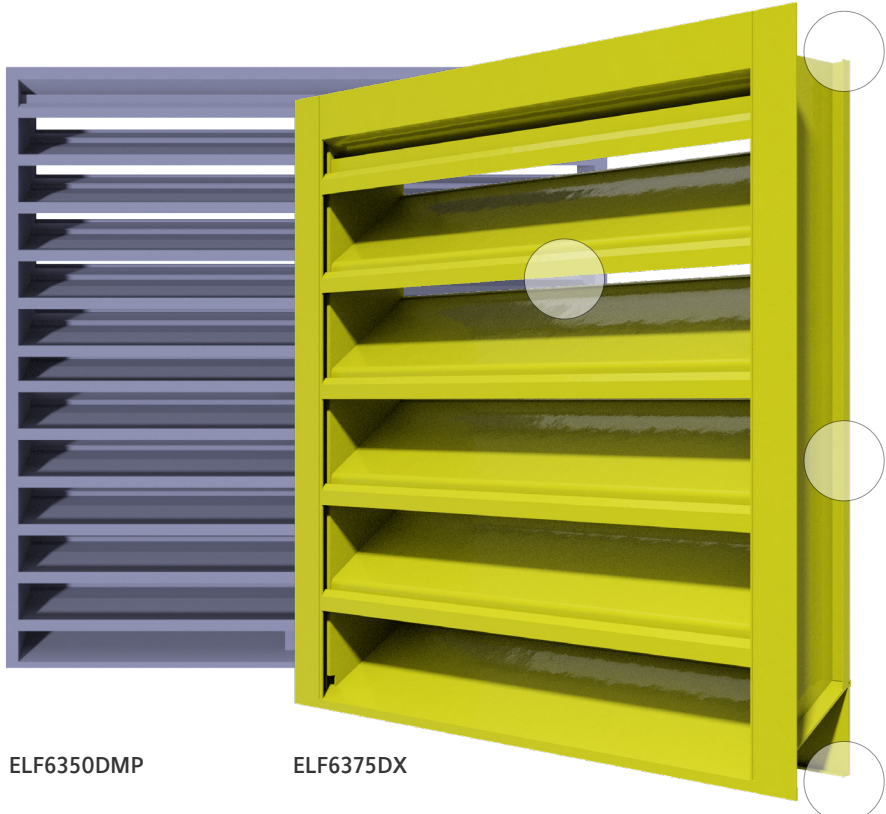
CIRQUE
LUXURY LEASING

 **pital**

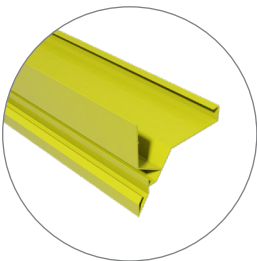


Stationary Louvers

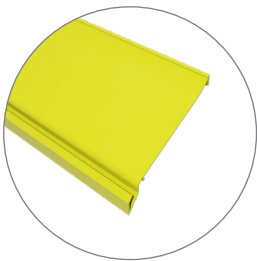
STATIONARY LOUVERS



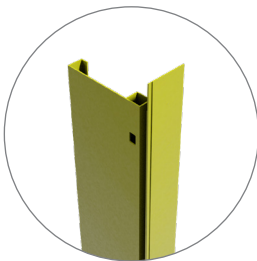
COMPONENT DETAILS



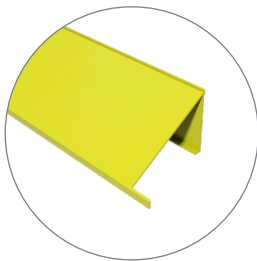
Head



blade



Jamb



Sill



ELF15J
THIN LINE STATIONARY LOUVER

The ELF15J is 1½" deep stationary louver that has a 45° blade angle. It's designed for featuring an architecturally styled hidden mullion for continuous line appearance.

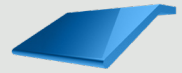


- ▶ Aluminum build
- ▶ 1½" frame depth
- ▶ 50% free area
- ▶ Low maintenance
- ▶ Economical



ET125 & -30
THIN LINE STATIONARY LOUVER

The ET125 and ET125-30 louvers are 1¼" deep thin line stationary louvers, primarily used for decorative and PTAC applications where water penetration is not a concern.

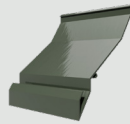


- ▶ Aluminum build
- ▶ 1¼" frame depth
- ▶ 63% free area
- ▶ Economical
- ▶ Low maintenance



ELF375DX(D)
STATIONARY LOUVER

The ELF375DX(D) Stationary Louver has a four-inch-deep frame, a 54 percent free area, 37½° blade angle, and a high-performance frame system. It provides excellent water penetration performance.

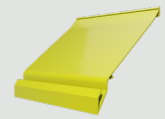


- ▶ 37½° blade angle
- ▶ 4" frame depth
- ▶ 54% free area
- ▶ Aluminum build
- ▶ Low maintenance



ELF6375DX
STATIONARY LOUVER

The ELF6375DX Stationary Louver has a six-inch-deep frame, a 57 percent free area, a 37½° blade angle, and a high-performance frame system. It provides excellent water penetration performance and continuous blade styling up to 120 inches.



- ▶ 37½° blade angle
- ▶ 6" frame depth
- ▶ 57% free area
- ▶ Aluminum build
- ▶ Low maintenance



ELF211D
STATIONARY LOUVER

The ELF211D is a two-inch-deep stationary louver featuring a 38 percent free area with a high-performance frame system and a drainable head to help collect and remove water. This louver also has an architecturally styled hidden mullion, allowing a continuous blade appearance.



- ▶ Aluminum build
- ▶ 2" frame depth
- ▶ 38% free area
- ▶ Low maintenance
- ▶ Excellent performance



ELF6350DMP
STATIONARY LOUVER

The ELF6350DMP stationary louver has a 6" deep frame with a industry leading 62 percent free area along with a high performance, drainable frame design that collects, channels and removes water.



- ▶ 32° blade angle
- ▶ 6" frame depth
- ▶ 62% Free Area
- ▶ Aluminum build
- ▶ Low maintenance



STATIONARY LOUVERS

Stationary louvers are commonly seen in applications that require intake and exhaust ventilation. Of all of the louver sub categories, stationary louvers are the most common ones used and have the largest breadth of models. Stationary louvers are both drainable and non-drainable and provide protection for water infiltration. Non-drainable models are commonly sought after for projects with an emphasis on architectural aesthetics while drainable models perform better in guiding moisture away from the area behind the louver.

Model	Min. Dim.	Max. Dim.	Depth	Blade Angle	Blade Style	Blade Orientation	Free Area	AMCA Certification	
								Air Perf.	Water Penetration
ELF15J	6" x 6"	Unlimited	1½"	45°	Non-Drainable	Horizontal	50%	-	-
ELF211	6" x 10"	Unlimited	2"	45°	Non-Drainable	Horizontal	42%	-	-
ELF375X	12" x 12"	Unlimited	4"	37½°	Non-Drainable	Horizontal	54%	✓	✓
ELF375XH	12" x 12"	Unlimited	4"	37½°	Non-Drainable	Horizontal	54%	✓	✓
ELF375DXH	12" x 12"	Unlimited	4"	37½°	Drainable	Horizontal	54%	✓	✓
ELF445DX	12" x 12"	Unlimited	4"	45°	Drainable	Horizontal	52%	✓	✓
ELF445DXH	12" x 12"	Unlimited	4"	45°	Drainable	Horizontal	52%	✓	✓
ELF6350DMP	12" x 12"	Unlimited	6"	35°	Drainable	Horizontal	62%	✓	✓
ELF6375X	12" x 12"	Unlimited	6"	37½°	Non-Drainable	Horizontal	55%	✓	✓
ELF6375XH	12" x 12"	Unlimited	6"	37½°	Non-Drainable	Horizontal	55%	✓	✓
ELF6425DD	12" x 12"	Unlimited	6"	42½°	Non-Drainable	Horizontal	51%	✓	✓
ELF6811S	12" x 12"	Unlimited	6"	45°	Drainable	Horizontal	49%	-	-
ELF6811DD	12" x 12"	Unlimited	6"	45°	Dual-drainable	Horizontal	44%	✓	✓
ELF811DD	12" x 12"	Unlimited	4"	45°	Dual-drainable	Horizontal	44%	✓	✓
ELF811SH	12" x 12"	Unlimited	4"	45°	Non-Drainable	Horizontal	44%	-	-
L375D	12" x 12"	Unlimited	4"	37½°	Drainable	Horizontal	51%	✓	✓
L6375D	12" x 12"	Unlimited	6"	37½°	Drainable	Horizontal	54%	✓	✓

*More models at www.ruskin.com

*For the most current catalog information, please visit www.ruskin.com or use the Ruskin Online Louver Selection Tool.

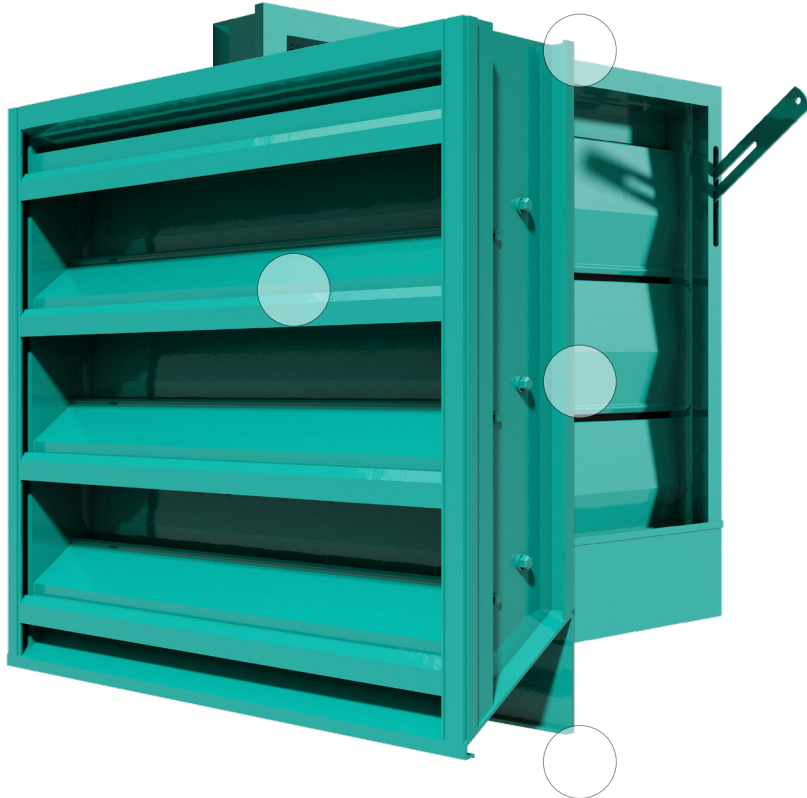
Model	Min. Dim.	Max. Dim.	Depth	Blade Angle	Blade Style	Blade Orientation	Free Area	AMCA Certification	
								Air Perf.	Water Penetration
ELF211D	6" x 10"	Unlimited	2"	45°	Drainable	Horizontal	38%	✓	✓
ELF375DX	12" x 12"	Unlimited	4"	37½°	Drainable	Horizontal	54%	✓	✓
ELF520DD	12" x 12"	Unlimited	5"	20°	Double Drainable	Horizontal	48%	✓	✓
ELF6375DX	12" x 12"	Unlimited	6"	37½°	Drainable	Horizontal	57%	✓	✓
ELF6375DXH	12" x 12"	Unlimited	6"	37½°	Drainable	Horizontal	57%	✓	✓
ELF6811	12" x 12"	Unlimited	6"	45°	Non-Drainable	Horizontal	49%	✓	✓
ELF81S30	6" x 8"	Unlimited	4"	30°	Non-Drainable	Horizontal	53%	✓	✓
ELF837	12" x 12"	Unlimited	4"	37½°	Non-Drainable	Horizontal	52%	✓	✓
GFL800	12" x 12"	Unlimited	4"	45°	Non-Drainable	Horizontal	44%	✓	✓
GFL800D	12" x 12"	Unlimited	4"	45°	Non-Drainable	Horizontal	45%	✓	✓
L330	12" x 12"	Unlimited	4"	30°	Non-Drainable	Horizontal	53%	✓	✓
L530	12" x 8"	Unlimited	4"	30°	Non-Drainable	Horizontal	45%	✓	✓



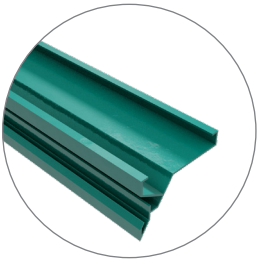


Combination Louvers

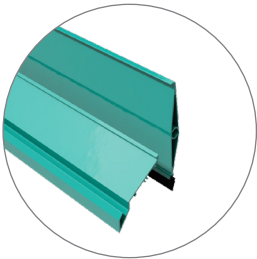
COMBINATION LOUVERS



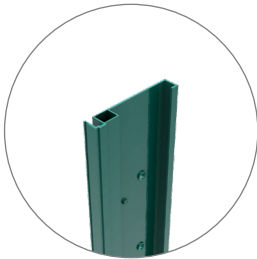
COMPONENT DETAILS



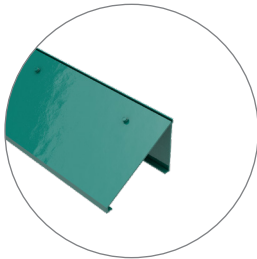
Head



blade



Jamb



Sill



ELC445D
COMBINATION LOUVER

The ELC445D Combination Louver has a four-inch-deep frame, drainable blades, a 39 percent free area, and aluminum construction for low maintenance and high corrosion resistance.

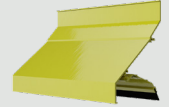


- ▶ 45° blade angle
- ▶ 4" frame depth
- ▶ 39% free area
- ▶ Combination Adjustable
- ▶ Low water penetration



ELBD812
COMBINATION LOUVER

The ELBD812 is a 4" deep, dual purpose combination stationary louver and backdraft damper design. The combination of a non-drainable louver and damper blade is designed to only open under intake airflow conditions.

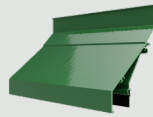


- ▶ Operable blades
- ▶ 4" frame depth
- ▶ 40% free area
- ▶ Low maintenance
- ▶ Intake combo with damper



ELBD813
COMBINATION LOUVER

The ELBD813 is a 4" deep, dual purpose combination stationary louver and backdraft damper design. The combination of a non-drainable louver blade and exhaust backdraft damper blade is designed to only open to exhaust back pressure.

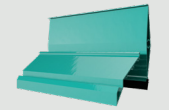


- ▶ Aluminum build
- ▶ 4" frame depth
- ▶ 40% free area
- ▶ Low maintenance
- ▶ Exhaust combo with damper



ELC6375DAX
COMBINATION LOUVER

The ELC6375DAX Louver has a six-inch-deep frame, has a 47 percent free area, and architecturally styled hidden mullions allowing continuous line appearance up to 120".

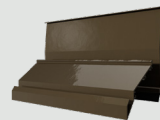


- ▶ Drainable
- ▶ 6" frame depth
- ▶ 47% free area
- ▶ Combination Adjustable
- ▶ Concealed blade linkage



ELC6375DXD
MIAMI-DADE APPROVED
COMBINATION LOUVER

The ELC6375DXD Combination Louver has a six-inch-deep frame, a 44 percent free area, adjustable rear blades, and architecturally styled hidden mullions.

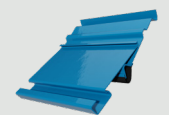


- ▶ Drainable
- ▶ 6" frame depth
- ▶ 44% free area
- ▶ Combination Adjustable
- ▶ Concealed blade linkage
- ▶ 110psf Design Pressure

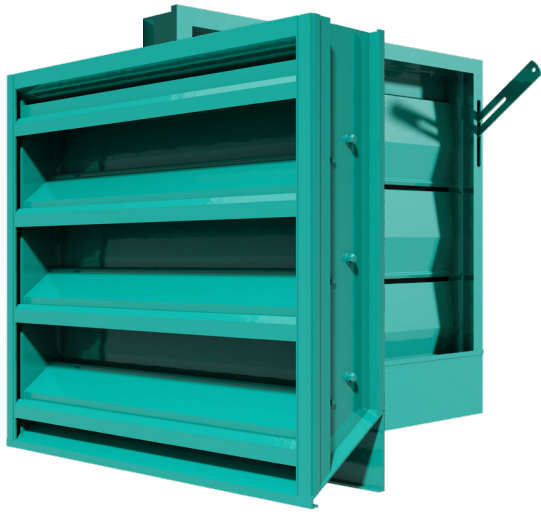


LC6375D
COMBINATION LOUVER

The LC6375D Combination Louver has a six-inch-deep frame, adjustable rear blades, and tight shutoff air intake and exhaust applications.



- ▶ Formed steel
- ▶ Seals tightly
- ▶ 6" frame depth
- ▶ 45% free area
- ▶ Drainable
- ▶ Combination adjustable



COMBINATION LOUVERS

Combination louvers act as a louver/damper combination. They utilize fixed louver blades in the front and adjustable blades in the rear that can be opened or closed. These louvers are popular for warehouse applications and other structures where you want to close the airflow without the use of a damper. The operable blades are opened and closed manually or with the use of an actuator. Combination louvers can incorporate both drainable and non-drainable blades, which are selected based on the structure's performance needs.

Model	Min. Dim.	Max. Dim.	Depth	Blade Angle	Blade Style	Blade Orientation	Free Area	AMCA Certification		AMCA 540/550
								Air Perf.	Water Penetration	
ELBD375E	12" x 12"	Unlimited	6"	37½°	Drainable	Horizontal	45%	-	-	-
ELBD375I	12" x 12"	Unlimited	9"	37½°	Drainable	Horizontal	40%	-	-	-
ELBD812	12" x 12"	Unlimited	4"	45°	Non-Drainable	Horizontal	40%	-	-	-
ELBD813	12" x 12"	Unlimited	4"	45°	Non-Drainable	Horizontal	40%	-	-	-
ELC445D	12" x 12"	Unlimited	4"	45°	Drainable	Horizontal	39%	✓	✓	-
ELC6375DAX	12" x 12"	Unlimited	6"	37½°	Drainable	Horizontal	47%	✓	✓	-
ELC6375DXW	12" x 12"	Unlimited	6"	37½°	Drainable	Horizontal	47%	✓	✓	-
LC6375D	12" x 12"	Unlimited	6"	37½°	Drainable	Horizontal	45%	✓	✓	-

*For the most current catalog information please visit www.ruskin.com or use the Ruskin Online Louver Selection Tool.



REGIONS

PARKING

ENTER
CLEARANCE 9'-6"

LEASING OFFICE

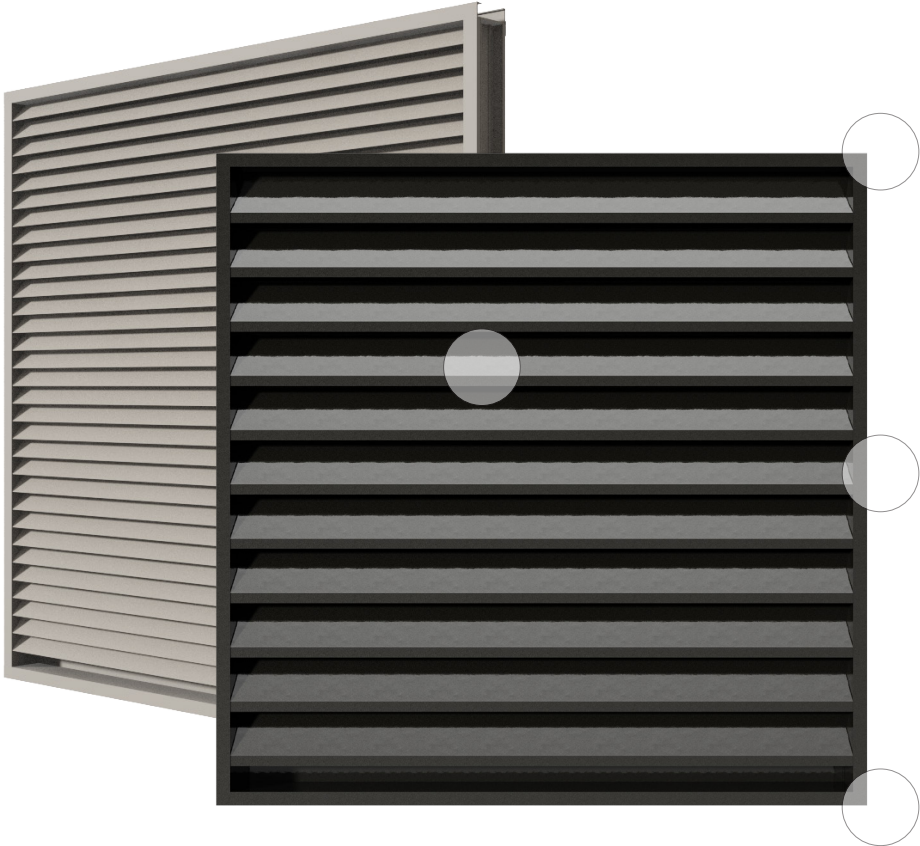
PARK

LEASING
310



Sight-Proof Louvers

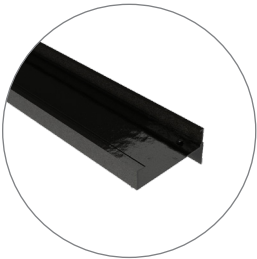
SIGHT-PROOF LOUVERS



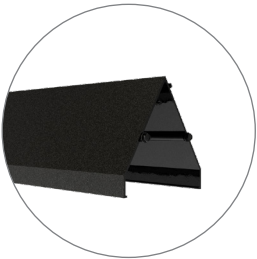
ELF30V

ELF40V

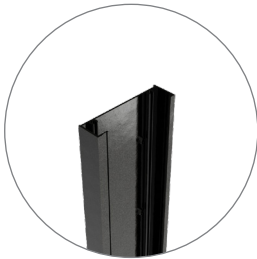
COMPONENT DETAILS



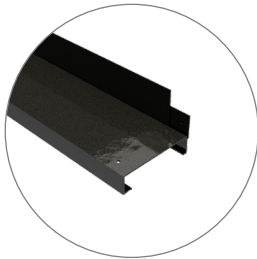
Head



blade



Jamb



Sill



ELF22V
STATIONARY LOUVER

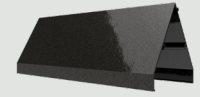
The ELF22V is a 2" stationary louver with a 60° blade angle. Its sight-proof chevron blades provide privacy, conceal equipment, prevent vandalism and act as a safety barrier to dangerous areas.

- ▶ 60° blade angle
- ▶ 2" frame depth
- ▶ 28% free area
- ▶ Sight-proof
- ▶ Inverted chevron



ELF40V
STATIONARY LOUVER

The ELF40V is a 4" stationary louver with a 60° blade angle. Its sight-proof chevron blades provide privacy, conceal equipment, prevent vandalism and act as a safety barrier to dangerous areas.



- ▶ 60° blade angle
- ▶ 4" frame depth
- ▶ 35% free area
- ▶ Sight-proof
- ▶ Architecturally styled

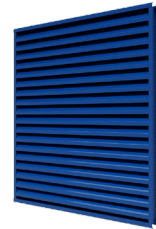


ELF520DD
Sight-proof DRAINABLE LOUVER

The ELF520DD Sight-proof Drainable Louver has a five-inch-deep frame, a 48 percent free area, and reduced water penetration in an economical sight-proof design.



- ▶ Economical
- ▶ 5" frame depth
- ▶ 48% free area
- ▶ Sight-proof
- ▶ Reduced water penetration
- ▶ Architecturally styled



L24
STATIONARY LOUVER

The L24 Stationary Louver has a four-inch-deep frame, a 42 percent free area, and an economical galvanized steel construction.



- ▶ Galvanized steel construction
- ▶ Sight-proof
- ▶ 4" frame depth
- ▶ 42% free area
- ▶ Economical
- ▶ Resistant



L26
STATIONARY LOUVER

The L26 Stationary Louver has a six-inch-deep frame, a 47 percent free area, vandal-resistant sight-proof blades, and an economical steel construction.



- ▶ Sight-proof
- ▶ 6" frame depth
- ▶ 47% free area
- ▶ Economical
- ▶ Galvanized steel construction



SIGHT-PROOF LOUVERS

Sight-proof louvers offer the same benefits that screens do in concealing equipment. These louvers are built out of aluminum and steel and can be utilized for visual screening and light security. The orientation of sight-proof louvers can be positioned both horizontally and vertically.

Model	Min. Dim.	Max. Dim.	Depth	Blade Angle	Blade Style	Blade Orientation	Free Area	AMCA Certification	
								Air Perf.	Water Penetration
ELF22V	8" x 8"	Unlimited	2"	60°	Chevron	Horizontal	28%	-	-
ELF40V	12" x 12"	Unlimited	4"	60°	Chevron	Horizontal	35%	-	-
ELF520DD	12" x 12"	Unlimited	5"	20°	Sinusoidal	Horizontal	48%	-	-
L24	12" x 12"	Unlimited	4"	45°	Chevron	Horizontal	42%	-	-
L26	12" x 12"	Unlimited	6"	45°	Chevron	Horizontal	47%	-	-
ELF30V	12" x 12"	60" X 90"	3"	45°	Chevron	Horizontal	56%	-	-

*For the most current catalog information please visit www.ruskin.com or use the Ruskin Online Louver Selection Tool.





Wind-Driven Rain Louvers

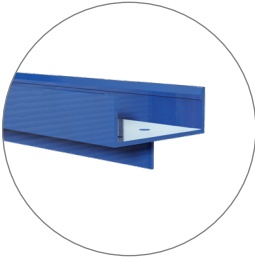
WIND-DRIVEN RAIN LOUVERS



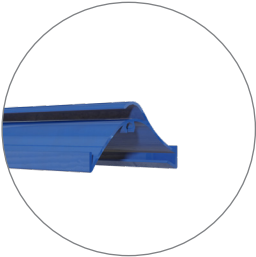
EME520V

EME220DD

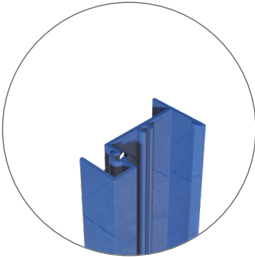
COMPONENT DETAILS



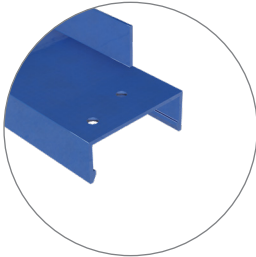
Head



blade



Jamb



Sill

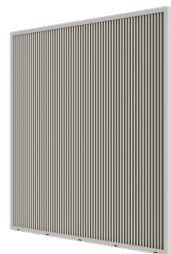


EME220DD
WIND-DRIVEN RAIN LOUVER

The EME220DD Stationary Wind-Driven Rain Louver has a two-inch-deep frame, sight-proof blades, This model is ideal for glazing applications and is cost effective with great pressure drop performance.



- ▶ 99% effective
- ▶ 2" frame depth
- ▶ 43% free area
- ▶ Sight proof
- ▶ Economical
- ▶ Class A WDR Rating



EME3625
WIND-DRIVEN RAIN LOUVER

The EME3625 Wind-Driven Rain Resistant Stationary Louver has a three-inch-deep frame and vertical blades, is listed for AMCA 550 for high velocity wind-driven rain, and is available welded or mechanically fastened.



- ▶ 99% effective
- ▶ 3" frame depth
- ▶ AMCA 550 listed
- ▶ AMCA 540 Basic Protection
- ▶ Vertical Blades
- ▶ Welded 46% free area
- ▶ Mechanical
- ▶ 53% free area



EME420DD
WIND-DRIVEN RAIN LOUVER

The EME420DD Stationary Wind-Driven Rain Louvers has a four-inch-deep frame, sight-proof blades, AMCA certified for air and water performance with a maximum 1250 fpm water penetration and 120-inch-wide continuous blades.

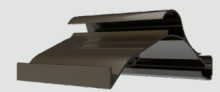


- ▶ 99% effective
- ▶ 4" frame depth
- ▶ 40% free area
- ▶ Sight proof
- ▶ AMCA540- Basic Protection
- ▶ Class A WDR Rating

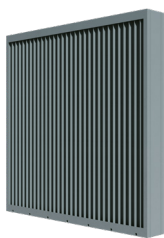


EME520DD
WIND-DRIVEN RAIN LOUVER

The EME520DD Wind-Driven Rain Resistant Louver has a five-inch-deep frame and horizontal double drainable blades to protect air intake and exhaust openings, and has excellent pressure drop performance, low maintenance, and high corrosion resistance.



- ▶ 5" frame depth
- ▶ 47% free area
- ▶ Excellent pressure drop
- ▶ AMCA540 Basic Protection
- ▶ Class A WDR Rating

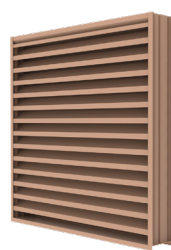


EME6625
WIND-DRIVEN RAIN LOUVER

The EME6625 Stationary Rain-Resistant Louver has a six-inch-deep frame, with 1.5" vertical spaced blades that prevent the penetration of wind driven rain, this louver is designed with exceptional protection an severe weather events.

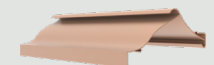


- ▶ 99% effective ratio
- ▶ 6" frame depth
- ▶ 43% free area
- ▶ Excellent pressure drop
- ▶ Welded construction
- ▶ Class A WDR Rating
- ▶ AMCA 550 Listed

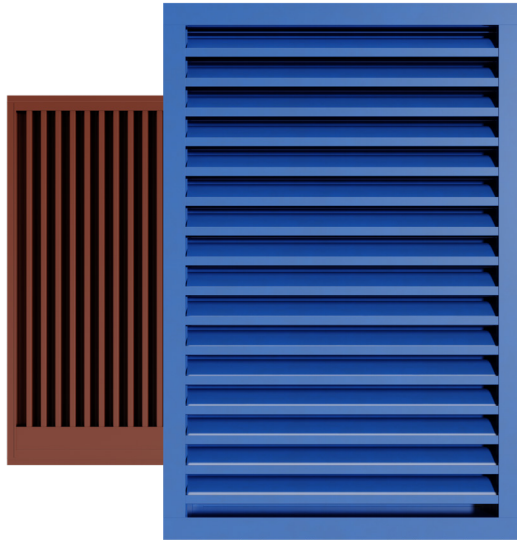


EME720
WIND DRIVEN RAIN LOUVER

The EME720 is a 7" deep horizontal louver that combines a continuous-blade architectural appearance with the performance of a wind driven rain resistance louver. It appeals to architects looking for a long uninterrupted look that will enhance a variety of monumental structures.



- ▶ 99% effective ratio
- ▶ 7" frame depth
- ▶ 56% free area
- ▶ Class A WDR Rating
- ▶ Architectural style hidden mullion



WIND-DRIVEN RAIN LOUVERS

Wind-driven rain louvers provide the maximum amount of protection in keeping wind-driven rain from egressing past an opening. Wind-driven rain louver models have both horizontal and vertical orientations and utilize a chevron-style rain-resistant blade that rejects horizontal rain as it comes in contact with the louver. These louvers are tested per AMCA 500-L at wind velocities of 29 and 50 miles per hour. Based on the results of the testing, the louvers are then graded from A to D, with A being the best performance at 99 percent effective or better at repelling wind-driven rain, B being 98.9 percent to 95 percent effective, C being 94.9 percent to 80 percent effective, and D being below 80 percent effective. Additionally, some wind-driven rain models have also been tested for impact and qualify as louvers that can be installed in states like Florida where hurricane conditions exist.

Model	Min. Dim.	Max. Dim.	Depth	Blade Angle	Blade Style	Blade Orientation	Free Area	AMCA Certification			AMCA 540/550
								Air Perf.	Wind-Dr. Rain	Water Pen.	
EME220DD	6" X 6"	Unlimited	2"	Compound	Sinusoidal	Horizontal	43%	✓	✓	✓	-
EME3625	12" X 12"	Unlimited	3"	Compound	Sinusoidal	Vertical	46%	✓	✓	-	550
EME520DD	12" X 12"	Unlimited	5"	Compound	Sinusoidal	Horizontal	47%	✓	✓	✓	540
EME520V	12" X 12"	Unlimited	5"	Compound	Sinusoidal	Vertical	43%	✓	✓	-	-
EME6625	12" X 12"	Unlimited	6"	Compound	Sinusoidal	Vertical	43%	✓	✓	-	540 & 550
EME720	12" X 12"	Unlimited	7"	Compound	Sinusoidal	Horizontal	56%	✓	✓	✓	-
HZ700	12" X 12"	Unlimited	7"	Compound	Combination	Horizontal	53%	✓	✓	✓	540 & 550
EME420DD	12" X 6"	90" x 120" or 120" x 90"	4"	Compound	Sinusoidal	Horizontal	40%	✓	✓	✓	540/550 540 & 550 Miami-Dade FBC/TDI Appd -

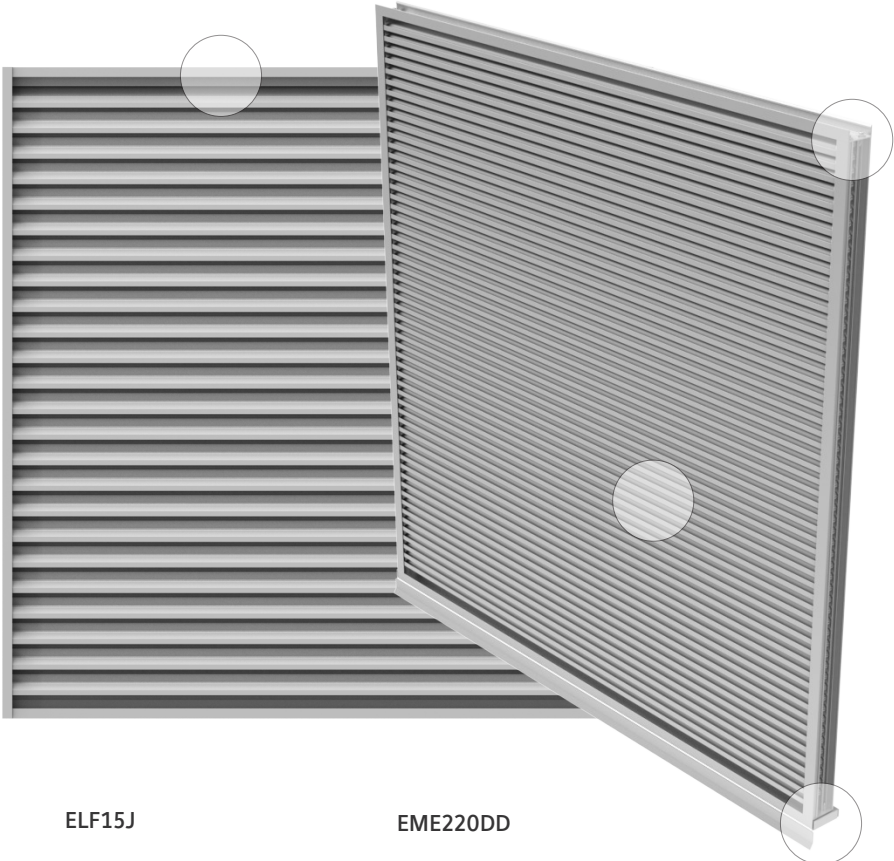
*For the most current catalog information please visit www.ruskin.com or use the Ruskin® Online Louver Selection Tool.





Glazing Louvers

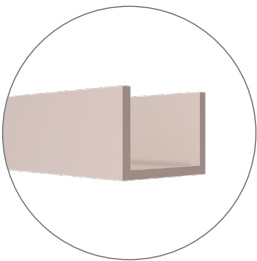
GLAZING LOUVERS



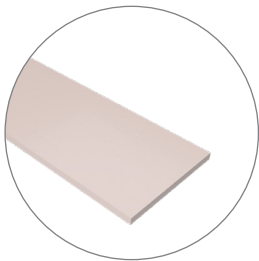
ELF15J

EME220DD

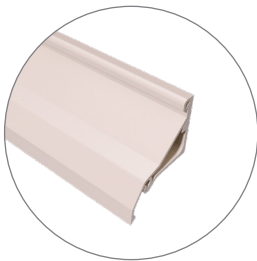
COMPONENT DETAILS



Glazing pocket



Frame cap



Blade



Frame

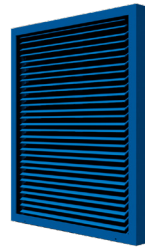


ELF15J
THIN LINE STATIONARY LOUVER

The ELF15J is 1½" deep stationary louver that has a 45° blade angle. It is primarily used for decorative and PTAC applications where water penetration is not a concern.

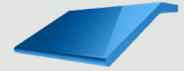


- ▶ Aluminum build
- ▶ 1½" frame depth
- ▶ 50% free area
- ▶ Low maintenance
- ▶ Economical



ET125-30
THIN LINE STATIONARY LOUVER

The ET125 and ET125-30 louver(s) are 1¼" deep thin line stationary louver(s), primarily used for decorative and PTAC applications where water penetration is not a concern.

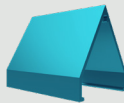


- ▶ Aluminum build
- ▶ 1¼" frame depth
- ▶ 63% free area
- ▶ Economical
- ▶ Architecturally styled



ELF22V
STATIONARY LOUVER

The ELF22V is a two-inch-deep stationary louver that has a 60° blade angle. It is primarily used for decorative and PTAC applications where water penetration is not a concern.



- ▶ 60° blade angle
- ▶ 2" frame depth
- ▶ 28% free area
- ▶ Sight proof
- ▶ Low maintenance



ELF211
STATIONARY LOUVER

The ELF211 is a two-inch-deep stationary louver featuring a 42 percent free area with a high-performance frame system and a non-drainable head.

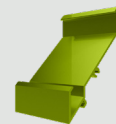


- ▶ 45° blade angle
- ▶ 2" frame depth
- ▶ 42% free area
- ▶ Aluminum build
- ▶ Excellent pressure drop

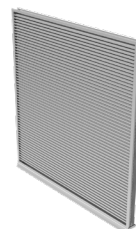


ELF211D
STATIONARY LOUVER

The ELF211D is a two-inch-deep stationary louver featuring a 38 percent free area with a high-performance frame system and a drainable head to help collect and remove water.

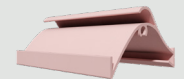


- ▶ Aluminum build
- ▶ 2" frame depth
- ▶ 38% free area
- ▶ Low maintenance
- ▶ Excellent performance

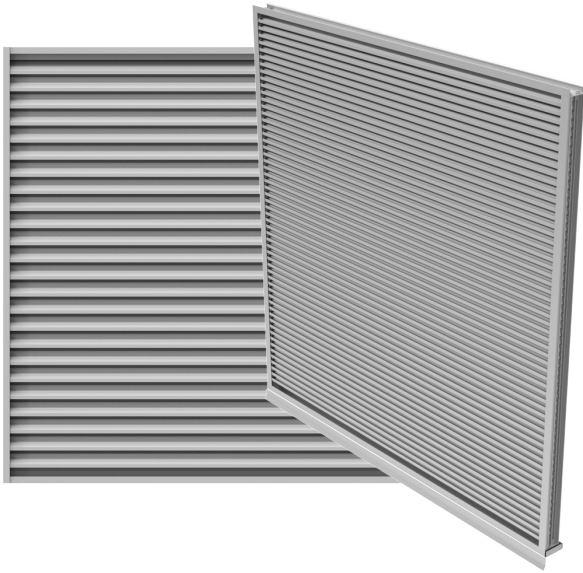


EME220DD
WIND-DRIVEN RAIN LOUVER

The EME220DD Stationary Wind-Driven Rain Louver has a two-inch-deep frame, sight-proof blades, a 43 percent free area, and great pressure drop performance.



- ▶ 99% effective
- ▶ 2" frame depth
- ▶ 43% free area
- ▶ Sight proof
- ▶ Economical



GLAZING LOUVERS

In the architectural community, there are applications where louvers are installed directly into glazing systems. Glazing frame louvers are designed to be easily installed into a glazed opening. For these louvers, the glazing frame is either welded or mechanically fastened onto the louver. The louver is then installed directly into the glazing frame. The design of glazing frame louvers is easy for contractors to install directly into a glazing system. Some glazing frame louvers offer extra performance, such as water penetration protection and even wind-driven rain protection.

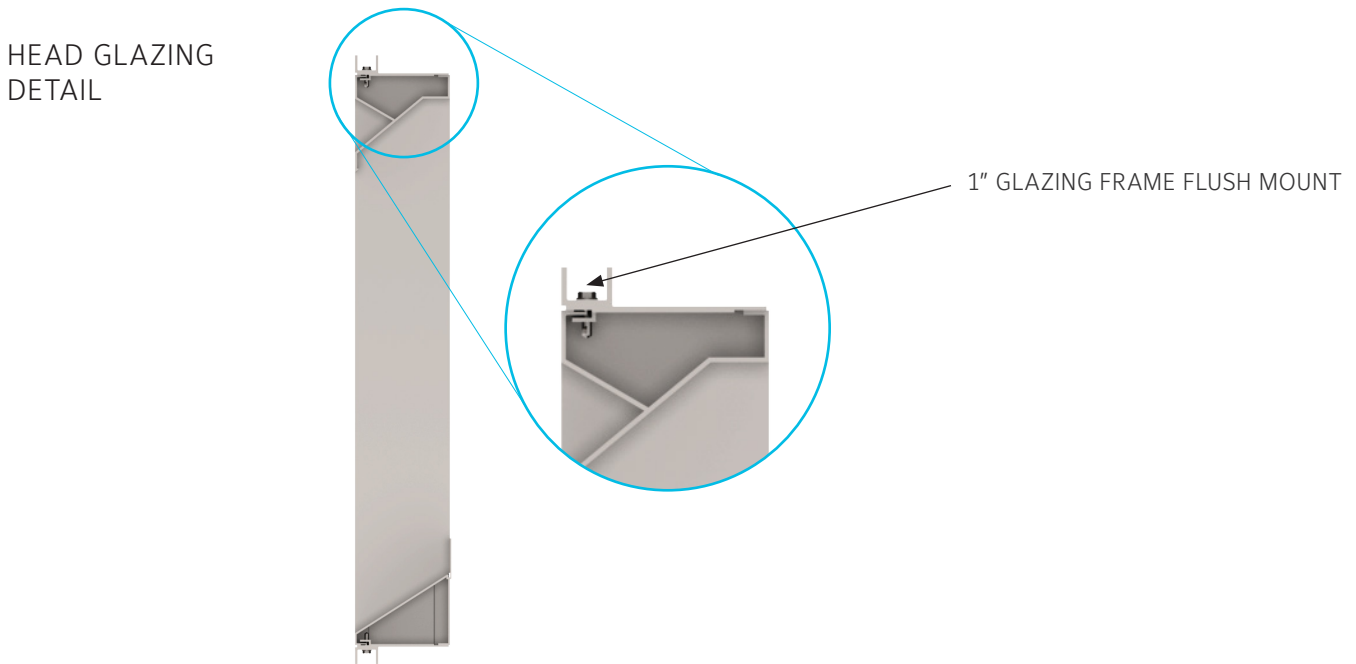
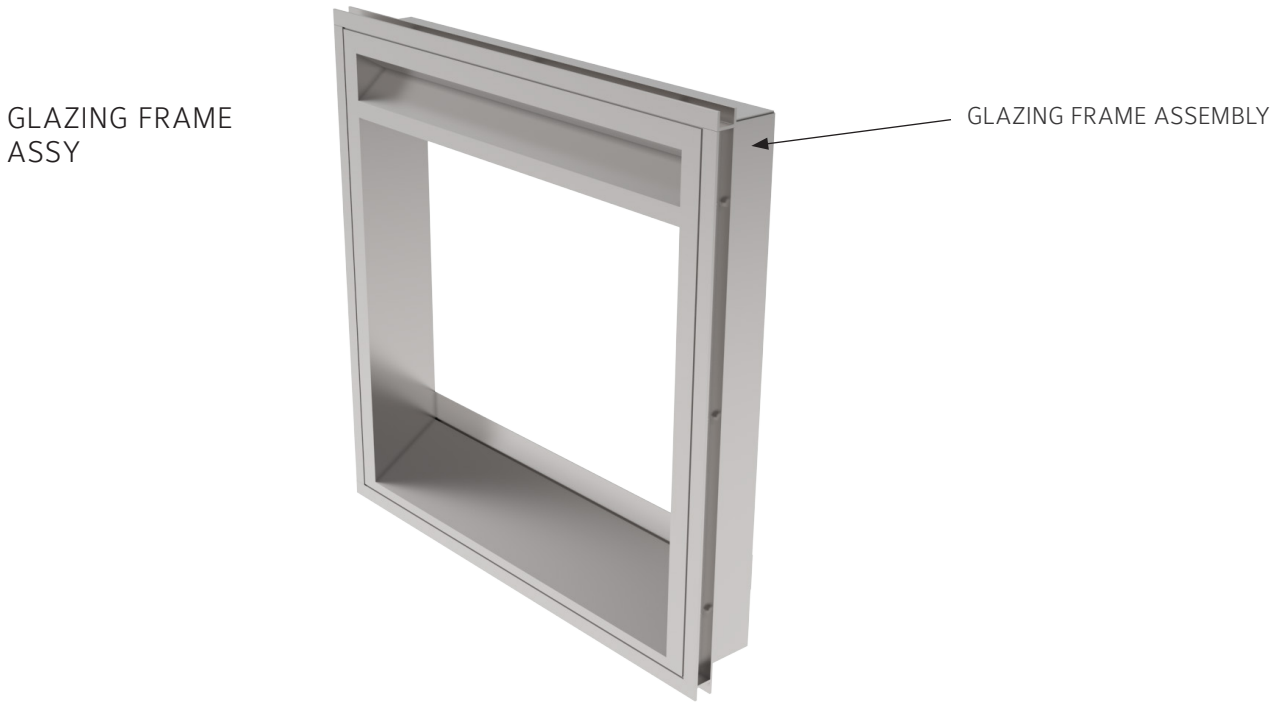
Model	Min. Dim.	Max. Dim.	Depth	Blade Angle	Blade Style	Blade Orientation	Free Area	AMCA Certification		
								Air Perf.	Wind-Dr. Rain	Water Pen.
ELF15J	6" x 6"	Unlimited	1½"	45°	Non-Drainable	Horizontal	50%	-	-	-
ET125-30	12" x 12"	Unlimited	1¼"	30°	Thin Line	Horizontal	63%	-	-	-
ELF22V	8" x 8"	Unlimited	1½"	60°	Chevron	Horizontal	28%	-	-	-
ELF211	6" x 10"	Unlimited	2"	45°	Non-Drainable	Horizontal	42%	-	-	-
ELF211D	6" x 10"	Unlimited	2"	45°	Drainable	Horizontal	38%	✓	-	✓
EME220DD	6" x 6"	Unlimited	2"	Compound	Sinusoidal	Horizontal	43%	✓	✓	✓

* Listed are the most common glazing frame louver models. Other models are available with glazing frame options. Contact Ruskin for further information.

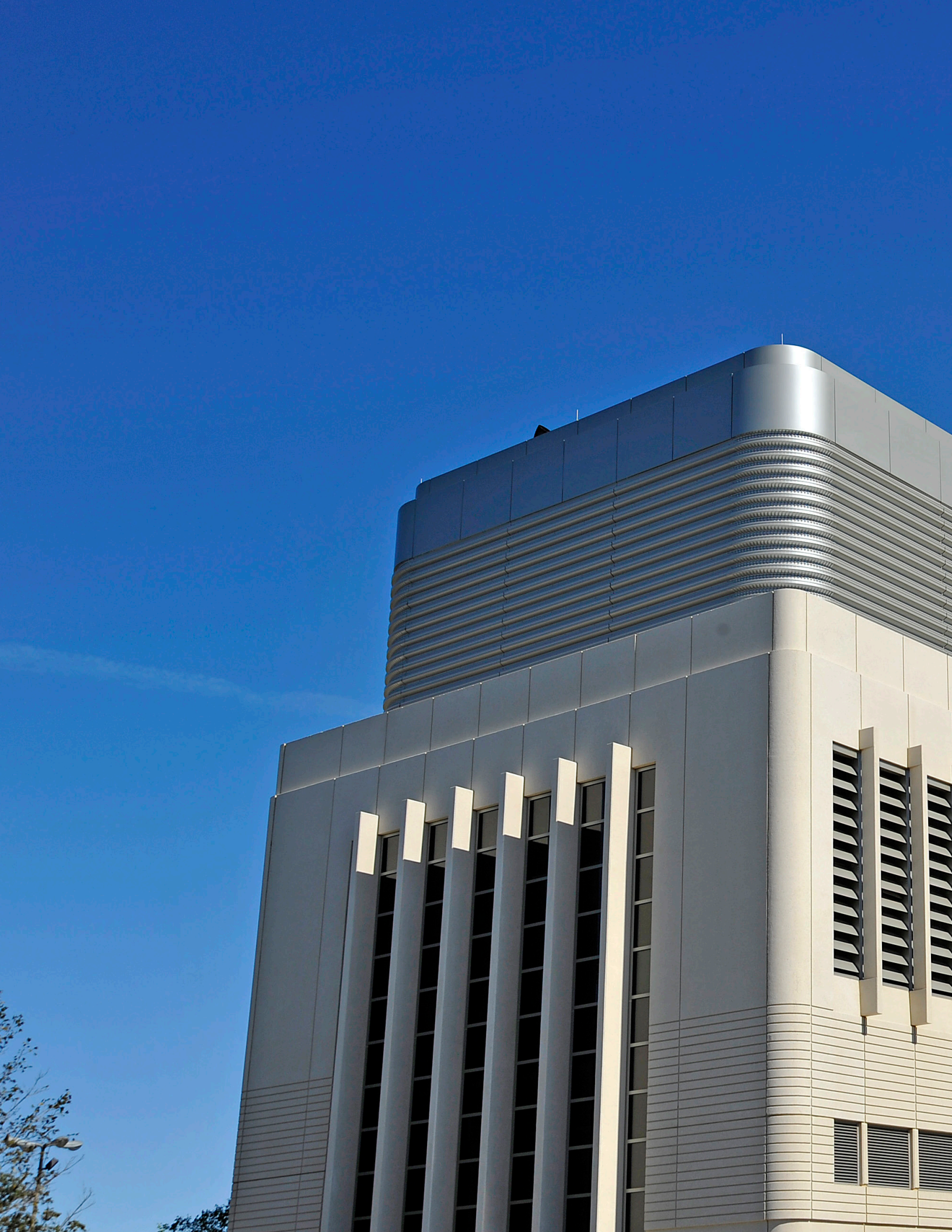
*All glazing frame options are available for all extruded aluminum louvers.

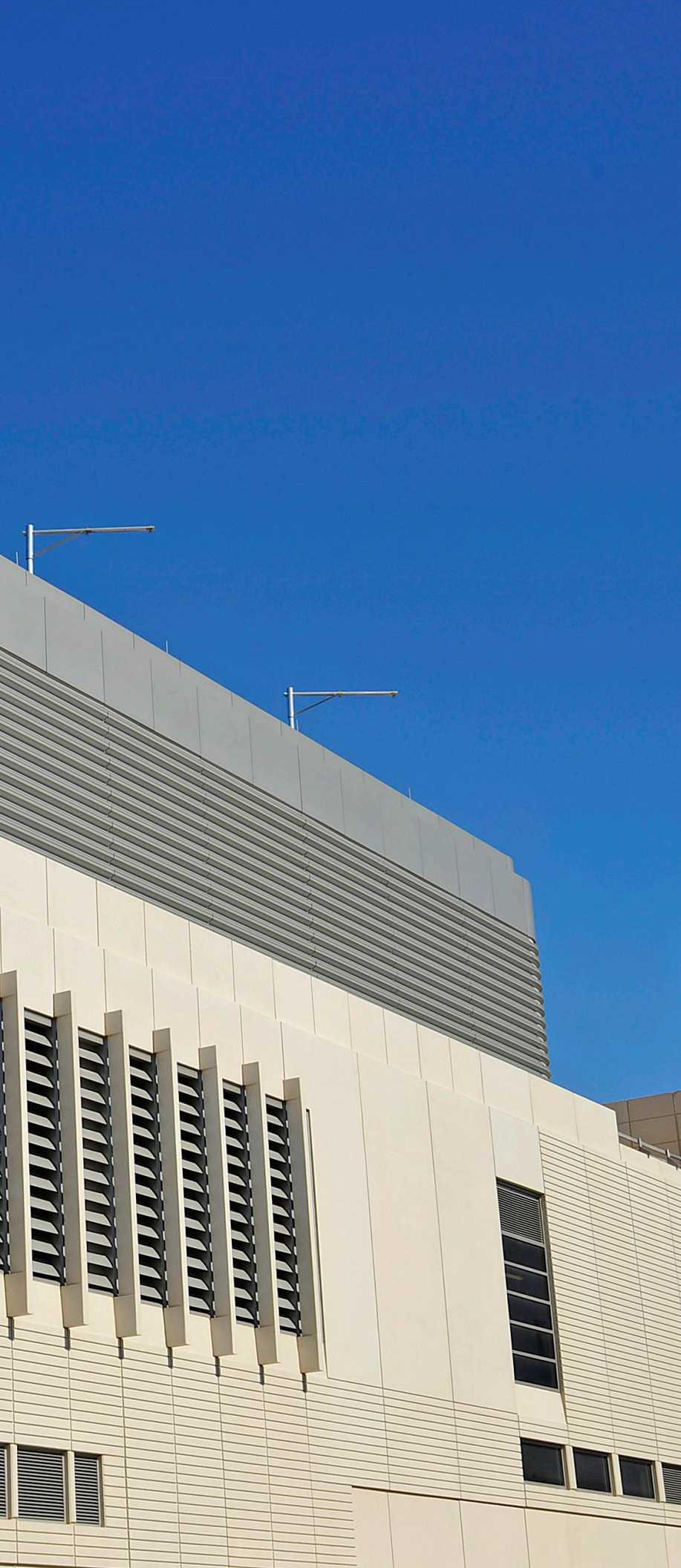
*For the most current catalog information, please visit www.ruskin.com or use the Ruskin Online Louver Selection Tool.

GLAZING FRAME LOUVER DETAIL



*Other glazing frame options available. Consult Ruskin for more information.





Acoustical Louvers

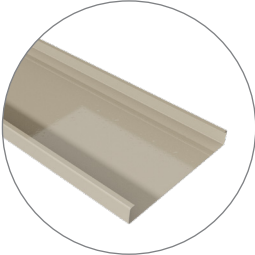
ACOUSTICAL LOUVERS



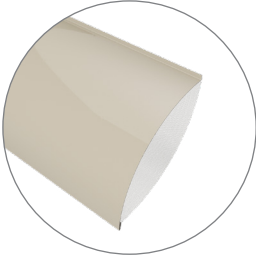
ACL645

ACL1245AF

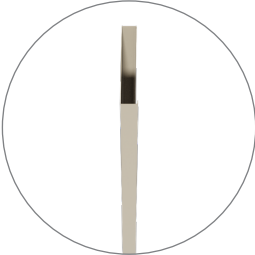
COMPONENT DETAILS



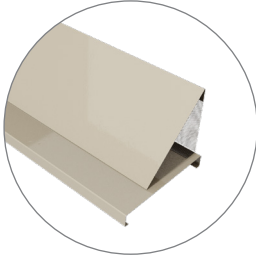
Head



Blade



Jamb

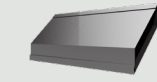


Sill



ACL1245
ACOUSTICAL LOUVER

The ACL1245 Acoustical Rain Louver is twelve inches deep with a 45° blade angle, and is AMCA certified for air, water, and sound performance. Available in steel or aluminum.



- ▶ Attenuating blades
- ▶ 29% free area
- ▶ 12" Frame Depth
- ▶ STC is 13
- ▶ AMCA 511 Certified



EAL6811 (M)
STATIONARY ACOUSTICAL LOUVER OR (M)
FOR ADJUSTABLE LOUVER

The EAL6811 (M) Acoustical Louver has 12" deep airfoil blades, a 45° blade angle, is AMCA certified, provides greater strength than linear blades and a lower pressure drop. Available in steel or aluminum.

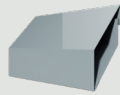


- ▶ Attenuating blades
- ▶ 6" frame depth
- ▶ 30% free area
- ▶ AMCA 511 Certified
- ▶ (M) adjustable for tight closure



ACL445
ACOUSTICAL LOUVER

The ACL445 Acoustical Louver that is four inches deep with a 45° insulated blade angle, designed to provide effective sound attenuation and weather protection, and is AMCA certified for air performance and water penetration. Available in steel or aluminum.

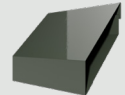


- ▶ Attenuating blades
- ▶ 4" frame depth
- ▶ 28% free area
- ▶ AMCA 511 listed
- ▶ 45° blade angle



ACL645
ACOUSTICAL LOUVER

The ACL645 Acoustical Louver that is six inches deep with a 45° insulated blade angle, designed to provide effective sound attenuation and weather protection, and is AMCA certified for air performance and water penetration. Available in steel or aluminum.

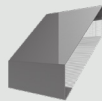


- ▶ Attenuating blades
- ▶ 6" Frame depth
- ▶ 27% free area
- ▶ AMCA 511 listed
- ▶ 45° blade angle



ACL845
ACOUSTICAL LOUVER

The ACL845 Acoustical Louver that is eight inches deep with insulated blades at a 45° angle, designed to provide effective sound attenuation and weather protection, and is AMCA certified for air performance and water penetration. Available in steel or aluminum.

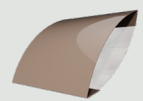


- ▶ Attenuating blades
- ▶ 8" Frame depth
- ▶ 27% free area
- ▶ AMCA 511 listed
- ▶ 45° blade angle



ACL845AF
ACOUSTICAL LOUVER WITH
AIRFOIL BLADE

The ACL845AF Acoustical Louver is eight inches deep, with an airfoil shaped insulated blade at a 45° angle, is uniquely designed for effective sound attenuation and low air flow resistance. Available in steel or aluminum.



- ▶ Attenuating airfoil blades
- ▶ 8" frame depth
- ▶ 28% free area
- ▶ AMCA 511 listed
- ▶ 45° blade angle



ACOUSTICAL LOUVERS

Acoustical louvers utilize louver blades with a sound -absorbent material to reduce infiltrating or escaping noise levels. These louvers are made of aluminum or steel and come in several blade styles, such as box blade and airfoil. They are commonly seen in office buildings, condominiums, and public buildings that are sometimes specified when sound attenuators cannot be installed. Ruskin acoustical louvers utilize an acoustical-grade fibrous media to limit noise and are designed to address acoustical attenuation across all eight octave bands.

No louver shapes available

Model	Min. Dim.	Max. Dim.	Depth	Blade Angle	Blade Style	Blade Orientation	Free Area	AMCA Certification			
								Air Perf.	Wind-Dr. Rain	Water Pen.	Sound
ACL1245	12" x 24"	Unlimited	12"	45°	Acoustical	Horizontal	29%	✓	-	✓	✓
ACL1245AF	12" x 24"	Unlimited	12"	45°	Acoustical	Horizontal	23%	✓	-	✓	✓
ACL445	12" x 18"	Unlimited	4"	45°	Acoustical	Horizontal	28%	✓	-	✓	-
ACL645	12" x 18"	Unlimited	6"	45°	Acoustical	Horizontal	27%	✓	-	✓	-
ACL845	12" x 18"	Unlimited	8"	45°	Acoustical	Horizontal	27%	✓	-	✓	-
ACL845AF	12" x 18"	Unlimited	8"	45°	Acoustical	Horizontal	28%	✓	-	✓	-
EAL6811	12" x 12"	Unlimited	6"	45°	Acoustical	Horizontal	30%	✓	-	✓	-
EAL6811M	12" x 12"	Unlimited	6"	45°	Acoustical/Adjustable	Horizontal	30%	✓	-	✓	-

*For the most current catalog information please visit www.ruskin.com or use the Ruskin Online Louver Selection Tool.





Hurricane Louvers

HURRICANE LOUVERS



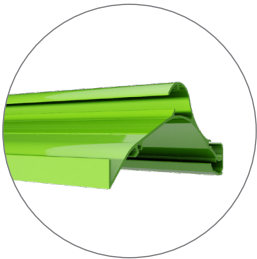
EME6325D

EME520MD

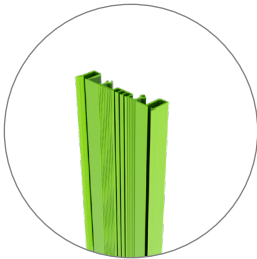
COMPONENT DETAILS



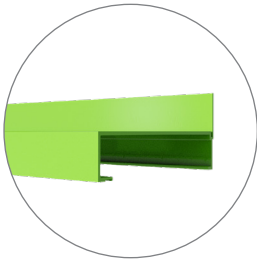
Head



Blade



Jamb

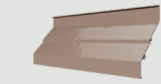


Sill



HZ700MD
MIAMI-DADE APPROVED
WIND-DRIVEN RAIN LOUVER

The HZ700MD is a seven inch deep, double frame extreme performance louver that is Miami Dade Approved. Its two-piece blade design provides protection from wind-driven rain penetration, reducing damage and additional operating expenses.



- ▶ 7" frame depth
- ▶ Horizontal 60° front blade
- ▶ 130psf windload
- ▶ AMCA540 Enhanced protection
- ▶ AMCA550 Listed
- ▶ AMCA511 Certified



ACL1245AFD
ACOUSTICAL LOUVER
WITH AIRFOIL BLADE

The ACL1245AFD Acoustical Louver has 12" deep airfoil blades, a 45° blade angle, is AMCA certified, and provides greater strength than linear blades with a lower pressure drop. Available in steel or aluminum.



- ▶ Attenuating blades
- ▶ 12 STC Rating
- ▶ 150psf windload
- ▶ AMCA540 Basic Protection
- ▶ Miami Dade Approved
- ▶ AMCA 511 Certified
- ▶ Aluminum Construction



EME420DDE
ENHANCED PROTECTION
WIND DRIVEN RAIN LOUVER

The EME420DDE Stationary Wind-Driven Rain Louver has a four-inch-deep frame, sight-proof blades, a 40 percent free area, and is AMCA certified for air and water performance. Listed for AMCA540 missile level E for facilities that require enhanced protection.

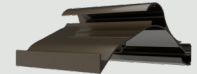


- ▶ 99% effective
- ▶ 4" frame depth
- ▶ 40% free area
- ▶ Sight proof
- ▶ AMCA540 Enhanced Protection
- ▶ AMCA550-with damper
- ▶ 80psf windload
- ▶ AMCA 511 Certified



EME520MD
MIAMI-DADE APPROVED
WIND-DRIVEN RAIN LOUVER

The EME520MD Wind-Driven Rain Resistant Louver has a five-inch-deep frame and a 20° blade angle, is AMCA listed for 540 Basic Protection. Also has a 47 percent free area, excellent pressure drop performance, low maintenance, and high corrosion resistance.



- ▶ 20° blade angle
- ▶ 5" frame depth
- ▶ 47% free area
- ▶ 120psf windload
- ▶ Miami Dade Approved
- ▶ Florida Building Code
- ▶ Texas Department of Insurance
- ▶ AMCA 540 Basic Protection
- ▶ AMCA 550 with Damper
- ▶ AMCA511 Certified

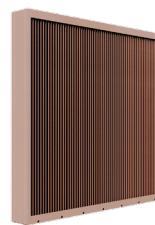


EME3625MD
WIND-DRIVEN RAIN LOUVER

The EME3625MD wind driven rain louver has a three inch deep frame with vertical blades with 53% free area and excellent pressure drop performance. Meets Basic impact protection and is AMCA550 listed.



- ▶ 99% effective
- ▶ 3" frame depth
- ▶ 53% Free area
- ▶ Vertical blades
- ▶ Miami Dade
- ▶ 120psf windload
- ▶ Florida Product Approved
- ▶ Texas Department of Insurance
- ▶ AMCA 540 Basic Protection
- ▶ AMCA550
- ▶ AMCA511



EME6325(D)
WIND-DRIVEN RAIN LOUVER

The EME6325D Hurricane Louver is a Miami-Dade and Florida approved, has a six-inch-deep frame with vertical blades, a 38 percent free area, and a 99 percent effective ratio for wind-driven rain performance.



- ▶ 99% Effective
- ▶ 6" frame depth
- ▶ 38% free area
- ▶ Vertical blades
- ▶ 150psf windload
- ▶ Miami Dade Approved
- ▶ Florida Product Approved
- ▶ AMCA540 Enhanced Protection
- ▶ AMCA550
- ▶ AMCA511



HURRICANE LOUVERS

Hurricane louvers are designed to meet the strict guidelines that have been set by the Florida Building Commission (Florida Building Code) and for some areas of the country. They also carry an NOA (Notice of Acceptance) that is issued by the Miami-Dade County Department of Regulatory and Economic Resources. In addition to the standard AMCA 500-L testing that these louvers go through, there are additional testing protocols that test these louvers for impact, high-velocity wind-driven rain, and pressure to simulate hurricane conditions that are seen along coastal states. These louvers are built to stand up to Mother Nature and carry a number of ratings and certifications.

Model	Min. Dim.	Max. Dim.	Depth	Blade Angle	Blade Style	Blade Orientation	Free Area	AMCA Certification			AMCA 540/550	Miami-Dade/FBC/TDI Appd.
								Air Perf.	Wind-Dr. Rain	Water Pen.		
HZ700MD	12" X 12"	Unltd x 120"	7"	Compound	Combination	Horizontal	53%	✓	✓	✓	540 & 550	Miami Dade, FBC, TDI
ACL1245AFD	12" x 24"	Unltd x 120"	12"	45°	Acoustical	Horizontal	29%	✓	-	✓	540	Miami-Dade
ACL1245D	12" x 18"	Unltd x 120"	12"	45°	Acoustical	Horizontal	22%	✓	-	✓	540	Miami-Dade
ACL645D	12" x 18"	Unltd x 120"	6"	45°	Acoustical	Horizontal	27%	✓	-	✓	-	Miami-Dade, FBC
ELC6375DXD	12" x 12"	Unltd x 120"	6"	37½°	Adjustable	Horizontal	44%	✓	-	✓	550	Miami-Dade, FBC, TDI
ELF375DFL	12" x 12"	Unltd x 120"	4"	37½°	Drainable	Horizontal	54%	✓	-	✓	-	FBC
ELF375DXD	12" x 12"	Unltd x 120"	4"	37½°	Drainable	Horizontal	51%	✓	-	✓	550	Miami-Dade, FBC
ELF6375DXD	12" x 12"	Unltd x 120"	6"	37½°	Drainable	Horizontal	57%	✓	-	✓	540 & 550	Miami-Dade, FBC, TDI
EME420MD	12" x 12"	Unltd x 144"	4"	Compound	Sinusoidal	Horizontal	40%	✓	✓	✓	540 & 550	Miami-Dade, FBC, TDI
EME520MD	12" x 12"	Unltd x 112"	5"	Compound	Sinusoidal	Horizontal	47%	✓	✓	✓	540 & 550	Miami-Dade, FBC, TDI
EME6325D	12" x 12"	Unltd x 120"	6"	Compound	Sinusoidal	Vertical	38%	✓	✓	✓	540 & 550	Miami-Dade, FBC
EME6625D	12" x 12"	Unltd x 96"	6"	Compound	Sinusoidal	Vertical	38%	✓	✓	-	540 & 550	Miami-Dade, FBC, TDI
EME3625DFL-HP	12" X 12"	Unltd x 96"	3"	Compound	Sinusoidal	Vertical	53%	✓	✓	✓	540 & 550	FBC
EME420DDE	12" X 6"	Unlimited	4"	Compound	Sinusoidal	Horizontal	40%	✓	✓	✓	540 & 550	

Model	Min. Dim.	Max. Dim.	Depth	Blade Angle	Blade Style	Blade Orientation	Free Area	AMCA Certification			AMCA 540/550	Miami-Dade/FBC/TDI Appd.
								Air Perf.	Wind-Dr. Rain	Water Pen.		
PHB637HDXD	24" x 24" x 12"	96" X 84" x 84"	6"	37½°	Drainable	Horizontal		-	-	-	-	Miami Dade, FBC, TDI
PHB6625D	24" x 24" x 12"	96" X 84" x 48"	6"	Compound	Sinusoidal	Vertical		-	-	-	-	Miami-Dade, FBC, TDI
EME520DDE	12" x 12"	Unlltd x 120"	5"	Compound	Sinusoidal	Horizontal	47%	✓	✓	✓	540 & 550	
EME3625MD	12" x 12"	Unlltd x 96"	3"	Compound	Sinusoidal	Vertical	53%	✓	✓	✓	540 & 550	Miami-Dade, FBC
EME6375DFL	12" x 12"	Unlltd x 120"	6"	37½°	Drainable	Horizontal	57%	✓	✓	✓	540	FBC

OMNI  H





Specialty Louvers

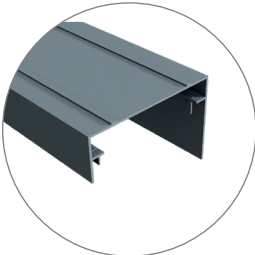
SPECIALTY LOUVERS



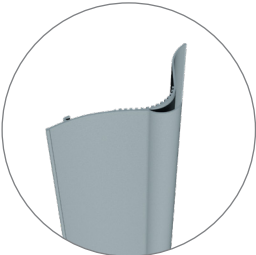
XP500WD

AML6

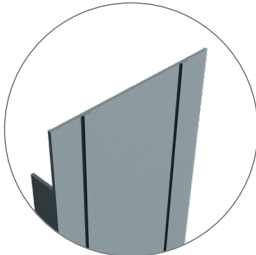
COMPONENT DETAILS



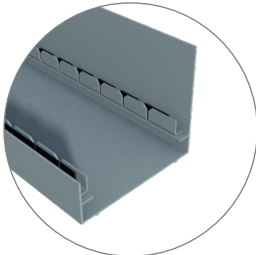
Head



Blade



Jamb



Sill

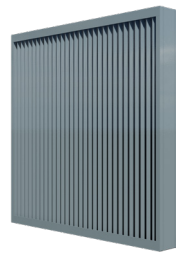


AML3
AIR MEASURING LOUVER

The AML3 Air Measuring Louver combines a wind-driven rain resistance and air measuring. Its three-inch-deep nominal depth requires less installation space than separate louvers and air measurement devices. Airflow measurement range of 275 to 1,400 fpm free area velocity.



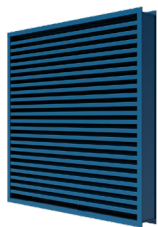
- ▶ Vertical blades
- ▶ 4" frame depth
- ▶ 45% free area
- ▶ Improves IAQ
- ▶ ASHRAE 62.1, 90.1, and 189.1 approved



AML6
AIR MEASURING LOUVER

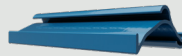
The AML6 Air Measuring Louver is the industry's first combined air louver/air measuring station. Its six-inch nominal depth requires less installation space than separate louvers and air measurement devices.

- ▶ Vertical blades
- ▶ 6" frame depth
- ▶ Low maintenance
- ▶ IECC compliant
- ▶ ASHRAE 62.1, 90.1, and 189.1 approved



XP500WD
FEMA TORNADO SHELTER
WIND-DRIVEN RAIN LOUVER

Introducing the XP500WD wind-driven rain FEMA louver, the first louver to provide both FEMA impact protection and Class A wind-driven rain protection. Featuring an innovative design, the XP500WD affords designers two louvers for the price of one.



- ▶ Patented
- ▶ 300PSF windload
- ▶ 27% free area
- ▶ Aluminum construction
- ▶ AMCA511 Certified
- ▶ UL Listed/ICC500/FEMA P361

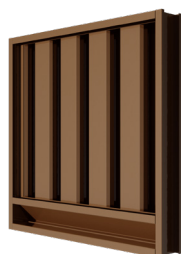


AFG40
INDUSTRIAL FIBERGLASS LOUVER

The AFG40 Fibre-Aire Adjustable Fiberglass Louver is a corrosion-resistant louver for harsh environments. It features a four-inch-deep frame, face linkage, bird screen, fiberglass and epoxy construction with Monel fasteners.

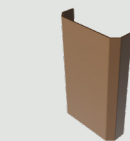


- ▶ Fiberglass build
- ▶ 4" frame depth
- ▶ SS linkage
- ▶ Adjustable
- ▶ Corrosion resistant



L5361
SAND REMOVAL LOUVER

The L5361 Stationary Louver is a four-inch-deep sand removal louver. It has a 25 percent free area, 90 percent particle removal efficiency, sight-proof blades, and is both AMCA 500-L and ASHRAE Standard 52-76 listed.



- ▶ Sand removal
- ▶ 4" frame depth
- ▶ 25% free area
- ▶ Vertical blades
- ▶ 90% particle efficiency



ELF375DSS
SNOW STOPPER LOUVER

The ELF375DSS Snow Stopper Louver is the first louver designed for snow penetration. It combines Ruskin's ELF375DX drainable louver, a finely meshed heated screen, and is operable in temperatures from -40°F to 32°F.



- ▶ Heated
- ▶ Drainable
- ▶ Melts snow
- ▶ 54% free area
- ▶ Cold weather operation



SPECIALTY LOUVERS

Specialty louvers include a variety of louvers that fit into special applications. Examples of these include the “XP series” which are US-certified for FEMA standards, blast louvers, which are designed with special software to withstand shock waves created by detonations, and the Ruskin ELF375DSS (snow stopper louver) which utilizes a heating element to melt accumulating snow. These louvers are all designed and tested for performance with many models exclusive to Ruskin.

No louver shapes available

Model	Min. Dim.	Max. Dim.	Depth	Blade Angle	Blade Style	Blade Orientation	Free Area	AMCA Certification		
								Air Perf.	Wind-Dr. Rain	Water Pen.
AML3	12" x 12"	Unlimited	4"	Compound	Sinusoidal	Vertical	45%	✓	✓	-
AML6	12" x 12"	Unlimited	7"	Compound	Sinusoidal	Vertical	43%	✓	✓	-
BL520DD	12" x 12"	Unlimited	5"	Compound	Sinusoidal	Horizontal	39%	-	-	-
ELF375DSS	14" x 20"	Unlimited	19"	37½°	Drainable	Horizontal	54%	-	-	-
L5361	24" x 24"	Unlimited	4"	Compound	Sight-Proof	Vertical	25%	-	-	-
XP500	12" x 12"	Unltd x 96"	5½"	45°	Chevron	Horizontal	50%	✓	-	✓
XP500WD	12" x 12"	Unltd x 96"	5¼"	Compound	Sinusoidal	Horizontal	27%	✓	✓	✓
SFG40	12" x 12"	Unlimited	4"	45°	Fiberglass	Horizontal	38%	✓	-	✓
AFG40	12" x 12"	Unlimited	4"	45°	Fiberglass/Adjustable	Horizontal	38%	-	-	-
BV100			1½"	48°		Horizontal	39%	-	-	-
BVC100			4"			Horizontal	39%	-	-	-

*For the most current catalog information, please visit www.ruskin.com or use the Ruskin Online Louver Selection Tool.





Penthouses

PENTHOUSES



PHB

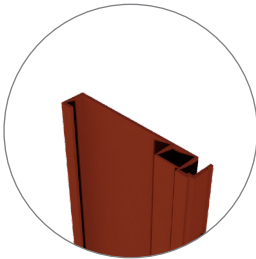
COMPONENT DETAILS



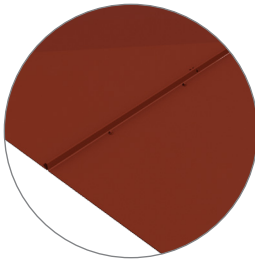
Head



Blade



Jamb



Seam cap



PHB
BOXED PENTHOUSE LOUVER

The PHB Boxed Penthouse Louver features boxed corners, aluminum/steel construction, and excellent air intake for fans and system inlets. Provides protection for roof openings.

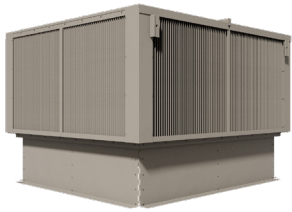
- ▶ Boxed corners
- ▶ Variable blades
- ▶ Protective
- ▶ Customizable
- ▶ Excellent air intake



PHB4SEV
SMOKE EXTRACTION BOXED PENTHOUSE LOUVER

The PHB4SEV Boxed Corner Smoke Extraction Penthouse meets both AMCA and NFPA requirements for respective components. It features accessible glass, class I leakage smoke damper, and a 54 percent free area.

- ▶ Annealed glass
- ▶ 4" frame depth
- ▶ 54% free area
- ▶ Emergency access
- ▶ Class I leakage smoke damper



PHB6625D
MIAMI-DADE APPROVED BOXED PENTHOUSE LOUVER

The PHBV Boxed Penthouse Louver features boxed corners, aluminum/steel construction, vertical blades, and excellent air intake for fans and system inlets. Provides protection for roof openings.

- ▶ Vertical blades
- ▶ ± 110 psf wind load
- ▶ Hinged roof
- ▶ Boxed corners
- ▶ Miami-Dade approved



PHM
MITERED CORNER PENTHOUSE LOUVER

The PHM Mitered Corner Penthouse Louver features mitered corners, aluminum construction, and excellent air intake for fans and system inlets. Provides protection for roof openings.

- ▶ Mitered corners
- ▶ Aluminum build
- ▶ Variable blades
- ▶ Aesthetic
- ▶ Architecturally styled



PHB637HDXD
HURRICANE PENTHOUSE LOUVER

The PHB6375HDXD Hurricane Penthouse Louver features impact resistance, a hinged roof for easy access, and drainable blades. No rafters required. Approved for use in open structures.

- ▶ Impact resistant
- ▶ TDI listed
- ▶ ± 110 psf wind load
- ▶ Hinged roof
- ▶ Miami-Dade approved



PENTHOUSES

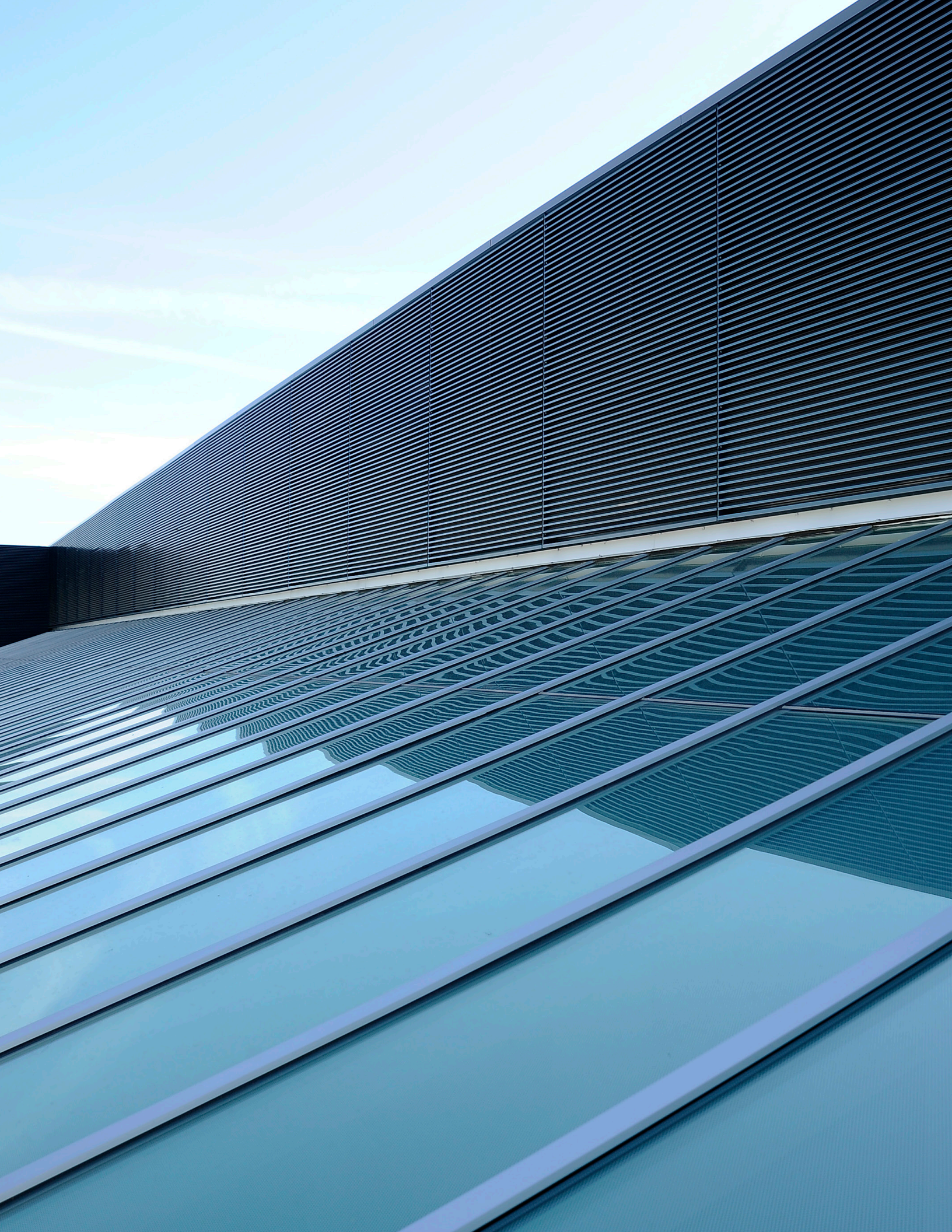
Penthouses are typically four louvers joined together with a roof, are mounted on a curb, and can be fashioned into certain shapes. Any louver model can be converted into a penthouse and some models are even approved for hurricane-prone regions as they have an NOA. Ruskin assembles penthouses that are ordered up to 60 inch x 60 inch. Penthouses that are larger than that are shipped “knocked down” and assembled in the field.

Model	Min. Dim. (Throat)	Max. Dim. (Throat)	Depth	Blade Angle	Blade Style	Blade Orientation	Free Area	Miami-Dade/FBC/TDI approved
PHM (Mitered) and PHB (Boxed)	12" A x 12" B x 12" C (Height)	Unltd A x Unltd B x 84" C (Height)	Variable	Variable	Variable	Horizontal	Variable	Variable
PHB4SEV	30" A x 30" B x 18" C (Height)	38" A x 38" B x 18" C (Height)	4"	37½°	Drainable	Horizontal	54%	-
PHB637HDXD	24" A x 24" B x 12" C (Height)	96" A x 84" B x 84" C (Height)	6"	37½°	Drainable	Horizontal	57%	MIAMI-DADE, FBC, TDI
PHB6625D	24" A x 24" B x 12" C (Height)	96" A x 84" B x 48" C (Height)	6"	Compound	Sinusoidal	Vertical	33%	MIAMI-DADE, FBC, TDI

*Throat Dimension is the opening of the roof or ID of roof curb

*More models at www.ruskin.com

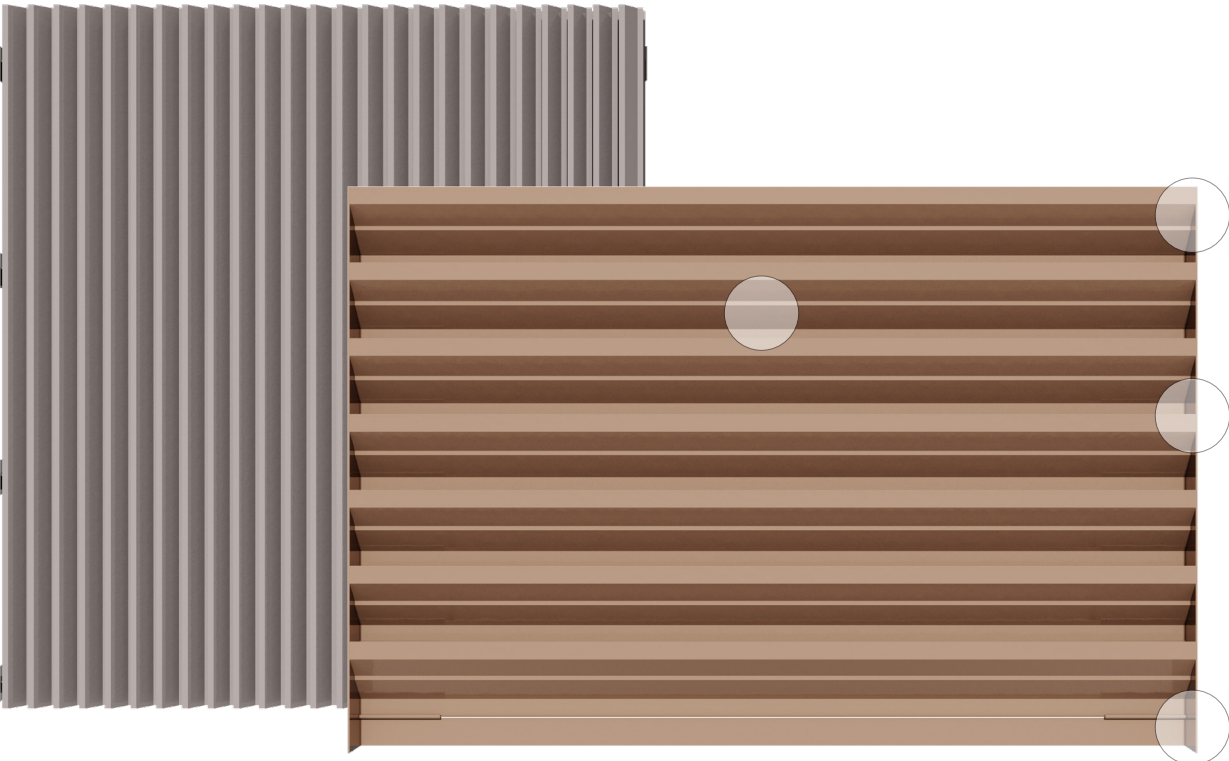
*For the most current catalog information please visit www.ruskin.com or use the Ruskin Online Louver Selection Tool.





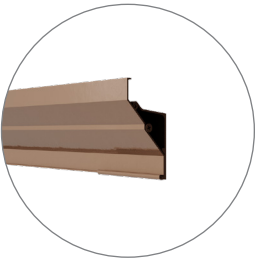
Screens and Grilles

SCREENS AND GRILLES



EV211 & EV538

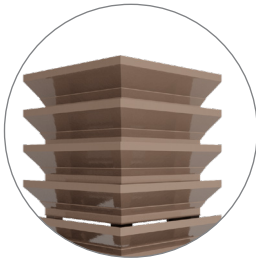
COMPONENT DETAILS



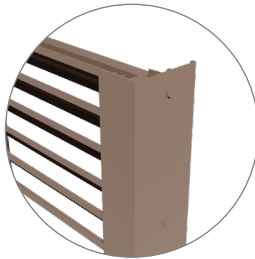
Blade



Blade brace



Mitered corner



Boxed corner

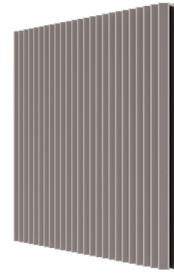


EV211
HORIZONTAL SCREEN LOUVER

The EV211 Horizontal Screen Louver has approximately three-inch blade spacing, is architecturally styled for continuous blade appearance, and has aluminum construction for low maintenance and high corrosion resistance.



- ▶ Low maintenance
- ▶ Inverted blade
- ▶ 42% free area
- ▶ Aluminum build
- ▶ 2" deep blade



EV538
VERTICAL CHEVRON SCREEN

The EV538 Vertical Chevron Screen is an all-aluminum construction so it's lightweight, low maintenance, and resistant to corrosion. Its sight-proof design and architectural styling has hidden supports for an attractive appearance.



- ▶ Sight proof
- ▶ Economical
- ▶ Lightweight
- ▶ Boxed corners
- ▶ Architecturally styled

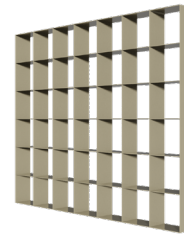


EV811
HORIZONTAL SCREEN LOUVER

The EV811 Horizontal Screen Louver has sight-proof blades, five-inch blade spacing, is architecturally styled for attractive appearance, and has aluminum construction for low maintenance and high corrosion resistance.



- ▶ Inverted blade
- ▶ 5" blade spacing
- ▶ Continuous blade
- ▶ Aluminum build
- ▶ Variable blade spacing available



EG100
DECORATIVE GRILLE LOUVER

The EG100 Horizontal Screen Louver is architecturally styled with hidden supports for an attractive appearance and customizable square and rectangular patterning.

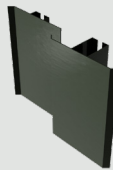


- ▶ Aesthetic design
- ▶ Low maintenance
- ▶ Aluminum build
- ▶ Variable depths
- ▶ Customizable patterns

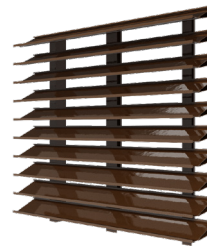


EV700
SIGHTPROOF VERTICAL LOUVER

The E700 Sight-Proof Vertical Louver has vertical blades, lightweight aluminum construction, and is architecturally styled with hidden mullions for an attractive appearance and sight-proof design.



- ▶ Sight proof
- ▶ Vertical blades
- ▶ Low maintenance
- ▶ Lightweight
- ▶ Architecturally styled

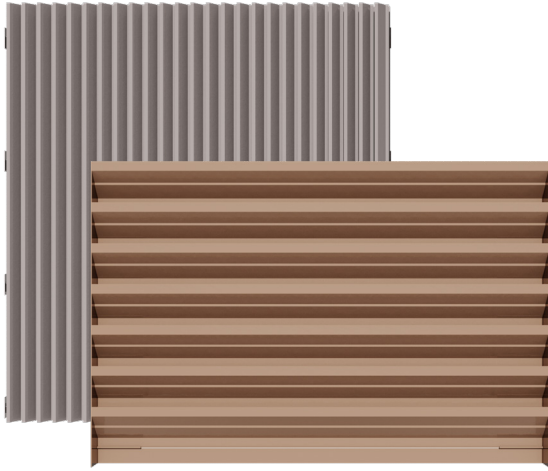


EV630
HORIZONTAL SCREEN LOUVER

The EV630 Horizontal Screen Louver has a six-inch blade depth, a unique blade profile designed for a high free area, and is architecturally styled for continuous blade appearance.



- ▶ Unique shape
- ▶ Hidden supports
- ▶ 68% free area
- ▶ Aluminum build
- ▶ Mitered/boxed corners



SCREENS AND GRILLES

Screens and grilles are architectural components for buildings. Screens are used primarily to hide equipment, cooling towers, and parking garage openings. In addition, they can also serve as a protective barriers that are less expensive than concealment walls. Whether an installation requires extensive air movement or complete concealment, Ruskin offers a wide selection of products for partial to full sight-proof screening. Blade width, depth, shape, and free area can be varied to achieve an attractive visual appearance.

*Consult Ruskin for special shapes

Model	Min. Dim.	Max. Dim.	Depth	Blade Angle	Blade Style	Blade Orientation	Free Area
EG100	12" x 12"	Unlimited	Variable	Variable	Egg Carton	Vertical & Horizontal	Variable
EV211	12" x 12"	Unlimited	2"	45°	Thin Line	Horizontal	42%
EV538	16" x 12"	Unlimited	Variable	45°	Chevron	Vertical	Variable
EV630	12" x 12"	Unlimited	6"	36°	Drainable	Horizontal	68%
EV700	24" x 24"	Unlimited	4"	45°	Sight-Proof	Vertical	27%
EV811	12" x 12"	Unlimited	4"	45°	Non-Drainable	Horizontal	Variable
LV811	12" x 12"	Unlimited	4"	45°	Sinusoidal	Horizontal	Variable

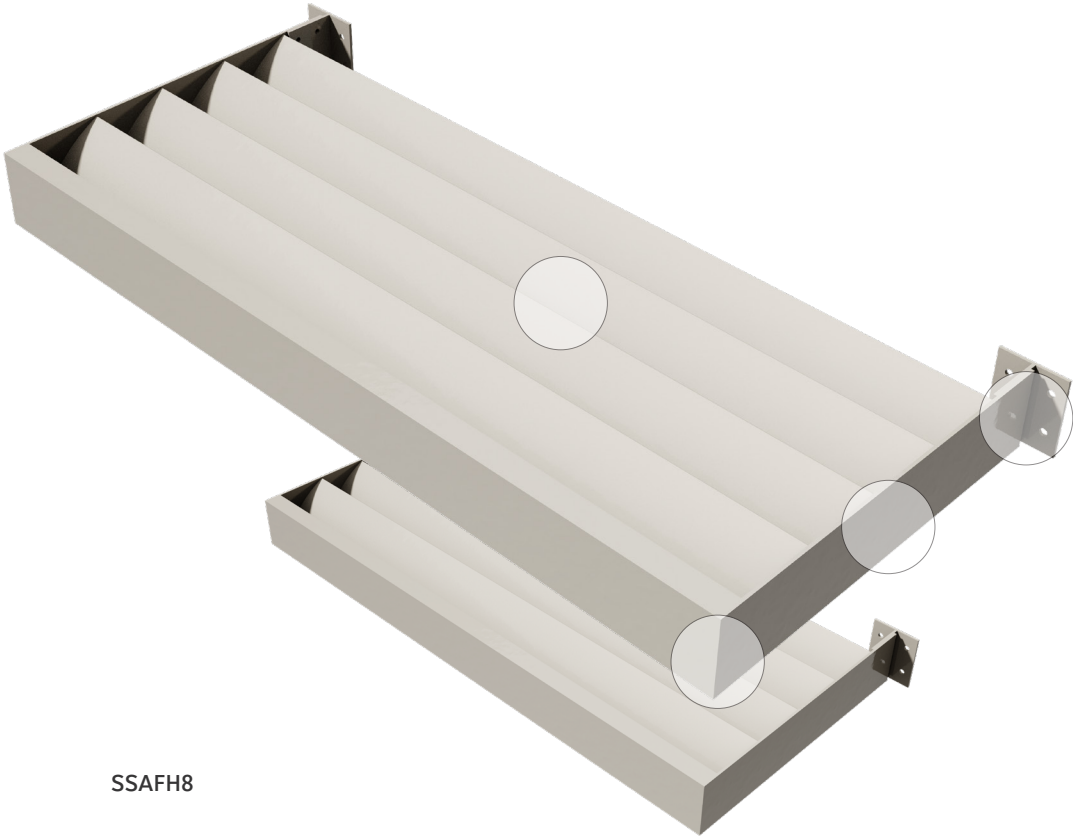
*For the most current catalog information, please visit www.ruskin.com or use the Ruskin Online Louver Selection Tool.





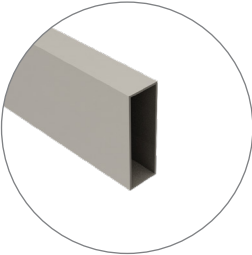
Sun Control Sunshades

SUNSHADES

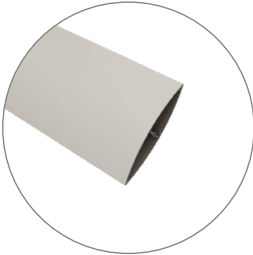


SSAFH8

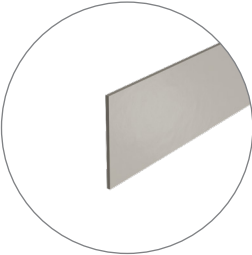
COMPONENT DETAILS



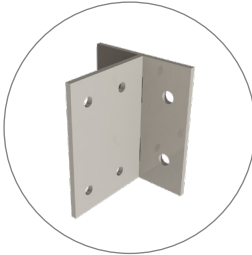
Fascia



Blade



Outrigger



Bracket

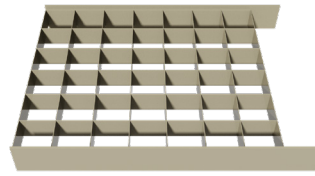


SSAFH
AIRFOIL BLADE SUNSHADE

The SSAFH Airfoil blade Sunshade has four-, six- and eight-inch extruded airfoil blades, can be fitted with fascia and specially designed outriggers, and can be made with custom blade spacing.



- ▶ Airfoil blade
- ▶ 4", 6" and 8" extrusion
- ▶ Variable spacing
- ▶ Optional fascia
- ▶ Multiple outriggers



SSEGH
EGG CRATE BLADE SUNSHADE

The SSEGH Egg Crate Blade Sunshade utilizes egg crate grilles as blades for a trellis appearance, has variable sizing, depths and patterning, and may be fitted with fascia and outriggers.

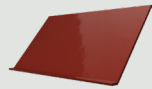


- ▶ Egg crate blade
- ▶ Variable depths
- ▶ Variable spacing
- ▶ Optional fascia
- ▶ Multiple outriggers

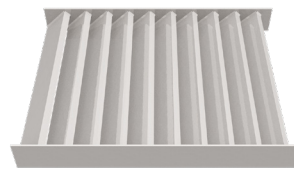


SSZBH4/6
"Z" BLADE SUNSHADE

The SSZBH4/6 "Z" blade Sunshade has a four-inch- or six-inch-deep blade, economical construction, quick delivery, and may be provided with fascia or special design outriggers.

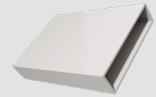


- ▶ Variable spacing
- ▶ 4" or 6" deep blade
- ▶ 40% free area
- ▶ Optional fascia
- ▶ Multiple outriggers



SSRTH
RECTANGULAR TUBE SUNSHADE

The SSRTH Rectangular Tube Sunshade has four-inch- or six-inch-wide tube blades, variable spacing, is horizontally mounted, and provides a distinctive appearance.



- ▶ Rect. tube blades
- ▶ 4" and 6" blades
- ▶ Variable spacing
- ▶ Optional fascia
- ▶ Multiple outriggers



SUNSHADE SPECIALTY SERVICES

Although Ruskin has standardized blade profiles that are offered for sunshades, Ruskin stands out among competitors by specializing in customized sunshade designs. We have the people, resources, and experience to work directly with customers to develop custom sunshade designs that are both architecturally pleasing and functional. Contact the louver sales group at louversales@ruskin.com or at 816-965-5494 for more information.



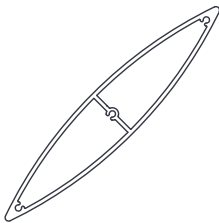
SUN CONTROL SUNSHADES

Sun control sunshades can be both functional and used for aesthetic affect. Sunshades offer energy savings by reducing heat gain through glazing. There are a wide variety of available blade styles and configurations. They also create a visually appealing appearance to the building they are installed on. Sunshade models can include airfoil, "Z" blade, tubular, and egg crate styles. Ruskin can also create custom sunshade designs based on the architectural needs of a structure. Ruskin sunshades are constructed of extruded and/or formed aluminum components for reduced weight and superior corrosion resistance. All sunshade models are available with a variety of PVDF or anodized finishes.

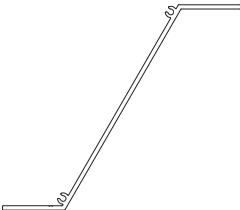
Model	Min. Dim.	Max. Dim.	Depth	Blade Angle	Blade Style	Blade Orientation
SSAFH	12" x 12"	Consult Factory	Variable	Variable	Airfoil	Horizontal
SSEGH	12" x 12"	Consult Factory	Variable	Variable	Egg Crate	Horizontal
SSRTH	12" x 12"	Consult Factory	Variable	Variable	Rectangular Tube	Horizontal
SSZBH 4/6	12" x 12"	Consult Factory	4" or 6"	60°	Z-Shape	Horizontal

* Consult factory maximum dimension based on windload and snowload

SUNSHADE BLADE STYLES



Airfoil



Z-shape



Rectangular tube

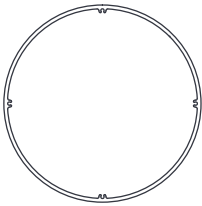


Egg carton

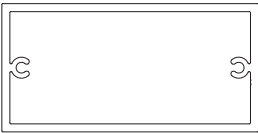
FASCIA STYLES



Channel



Round



Rectangular tube

*More shapes at www.ruskin.com

LOUVER TESTING AND CERTIFICATION



LOUVER TESTING AND CERTIFICATION AT RUSKIN

The AMCA (Air Movement and Control Association) is a not-for-profit organization that advances the knowledge of air systems through education and active advocacy. The ability to test louvers per AMCA's strict standards and protocols is essential to Ruskin's ability to develop successful products in the shortest time possible. Ruskin has advanced testing facilities that can quickly identify areas of improvement for a louver's design and can allow us to make adjustments in the design before sending a louver out for testing at AMCA or an accredited testing laboratory. At Ruskin, we can internally test for most of the AMCA 500-L testing protocols, including wind-driven rain, water penetration, and pressure drop. Additionally, Ruskin has the ability to test for impact and high-velocity wind-driven rain (hurricane conditions), or for areas of the US where FEMA protection is required.

Here at Ruskin, we test internally for most of the AMCA 500-L requirements, including wind-driven rain, water penetration, and pressure drop. Additionally, we test internally for impact-resistance testing for louvers designed for hurricane zones or areas where FEMA protection is required.

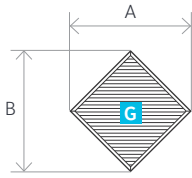
Ruskin test equipment is AMCA accredited for pressure drop and leakage testing per AMCA 500D and L. Testing facilities are AMCA certified for water penetration and air performance and our other testing is calibrated per AMCA standards. Guests of Ruskin, including reps, engineers and architects, are welcome to tour our facilities and see how we test as part of the training that we offer. At Ruskin, we have the capabilities to test for the following in louver standards:

- ▶ AMCA 500-L Wind-Driven Rain Testing
- ▶ AMCA 500-L Water Penetration Testing
- ▶ AMCA 500-L Air Performance Testing
- ▶ Impact Testing (AMCA 540/FEMA 361)

AMCA LICENSED RATINGS

Many Ruskin models are AMCA licenced, with air performance and water penetration data ratings based on tests and procedures conducted in accordance with AMCA Publication 511. All Ruskin louvers are tested with a mill finish.

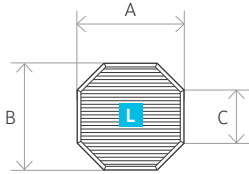
LOUVER SHAPES



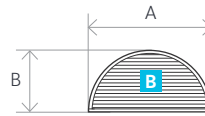
Diamond



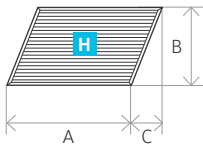
Round



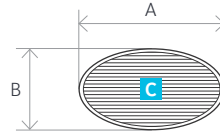
Octagon



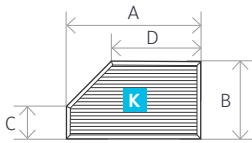
Top half round



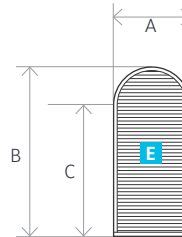
Parallelogram



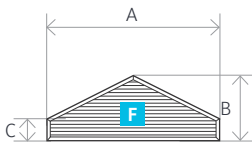
Oval



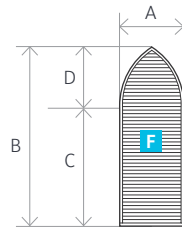
Left corner



Round top



House



Gothic

MIAMI DADE MODELS THAT OFFER SHAPES:

- ▶ EME6625D
- ▶ EME520MD
- ▶ EME420MD
- ▶ EME5625MD

SHAPES NOT AVAILABLE:

- ▶ No combination louvers
- ▶ No glazing louvers shapes A, B, C, E or F
- ▶ No acoustical
- ▶ No specialty
- ▶ No penthouse

*Not all louvers are available in all shapes

*Shaped louvers not certified by AMCA

*More shapes at www.ruskin.com

RUSKIN LOUVER COLORS

Ruskin finishes enhance product appearance to blend with other selected colors.

These same finishes provide extended weathering resistance similar to adjacent building surfaces. Ruskin provides most finishes available to architects and engineers. The standard finishes described herein represent those finishes usually selected, specified or required for most applications.

FINISHES AND COLOR GUIDE

2 Coat - 50 percent and 70 percent PVDF - Standard Colors.

The 15 colors are available in 2 Coat (50 percent PVDF) or 2 Coat (70 percent PVDF) finishes only.





CORONADO RED (24)

ASCOT WHITE (19)

TAUPE (52)

DARK BRONZE (75)

MEDIUM BRONZE (72)

CHAMPAGNE BRZ (71)

BRIGHT SILVER (88)

WARM SILVER (96)

ASTI (86)

COPPER (92)

CORAL REEF (93)

BLUE (05)

PEARLEDIZE 70 AND PEARLEDIZE 50 STANDARD COLORS

The nine colors are available in Pearledize 70, Pearledize 50, Clear or Color Anodize finishes only, and may be more expensive than the 50 percent and 70 percent PVDF colors shown beside.

PEARLEDIZE COLORS

FINISHES

Factory finishes by Ruskin are designed for low VOC emissions and eliminate the risk of VOC emissions found in louver finishes that are applied on site. All Ruskin manufacturing facilities operate in full compliance with all applicable air permitting regulations. All facilities maintain ISO 14001 Environmental Management Systems that include VOC emission reduction strategies including state-of-the-art spray equipment and operator training.

TYPE OF FINISH

FINISH SPECIFICATIONS

2 COAT – 70% PVDF

Ruskin Superior Finish: 2 Coat 70 percent PVDF paint finishes provide maximum resistance against color fade and chalking. This carbon/fluorine bond, unique to the resin, when coupled with the finest inorganic pigments, produces the most durable and long-lasting finish in the industry. These finishes are resistant to most chemicals, acid rain, salt spray and general air pollution. Ruskin offers a twenty-year warranty on these finishes in standard colors on standard extruded aluminum products. All standard colors meet or exceed AAMA 2605-17a.*

Before paint application, louvers shall be thoroughly cleaned and pretreated to assure maximum performance. PVDF finish shall be applied to provide 1.2 mils (30µm) factory applied, baked-on film in accordance with AAMA 2605-17a* "Voluntary Specification Performance Requirements and Test Procedures for Superior Performing Organic Coatings on Architectural Extrusions and Panels". Color shall be Ruskin (specify color name and number).

2 COAT – 50% PVDF

Ruskin High-Performance Finish: 2 Coat 50 percent PVDF finishes provide fluoropolymer benefits such as long color life and resistance to chalking and chemicals. For optimization of the price-benefit ratio, they are appropriate coatings for today's non-monumental projects. Ten-year warranty for standard color on standard extruded aluminum products is also available for Ruskin PVDF.

Louvers shall receive factory-applied, baked-on 2 Coat 50 percent PVDF-based color coating following thorough cleaning and pretreatment of metal. The finish shall be applied at 1.2 mils (30µm) total dry-film thickness in accordance with AAMA 2604-17a†. Color shall be Ruskin (specify color name and number).

PRIME COAT

Preparation for field painting. Finish may be topcoated with epoxy, vinyl, urethane and other heavy-duty coatings within six months of applications. Prime coat contamination always occurs before field painting and requires thorough field cleaning prior to painting.

Louvers shall receive prime coating following thorough cleaning and pretreatment of metal. Field topcoat with epoxy, vinyl, urethane or other heavy-duty coating within six months of application. Prime coat shall be a minimum of .3 ± .1 mils (8 ± 3µm) thick.

TYPE OF FINISH

FINISH SPECIFICATIONS

PEARLEDIZE 70 AND PEARLEDIZE 50

Ruskin High Pearlescent Finish. Pearledize is a PVDF-based finish that utilizes pearlescent mica flakes to simulate the metallic appearance of anodized and metallic paint finishes.

Pearledize 50 (50 percent PVDF):

Meets the AAMA 2604-17a† specification. A ten-year warranty is available on standard colors on standard extruded aluminum products.

Pearledize 70 (70 percent PVDF): Pearledize 70 meets the AAMA 2605-17a* specification. A twenty-year warranty is available on standard colors on extruded aluminum products.

Louvers shall receive thorough cleaning and pretreatment as described above. Pearledize coating shall be applied and baked to achieve a hard durable finish in compliance with either AAMA 2605-17a* or AAMA 2604-17a† as selected and specified. Color shall be Ruskin (specify color name and number).

COLOR ANODIZE

Electrolytically deposited coating on aluminum: The color anodize process specified in Aluminum Association Code AA-C22A44 electrolytically deposits inorganic color pigment finish to a 0.7 mil (18µm) minimum surface depth on sulfuric acid anodized aluminum. Treated aluminum is sealed to convert a freshly formed aluminum oxide finish to a corrosion-resistant, inert condition. Available only on aluminum. Some shade variation may occur.

Louvers shall receive electrolytically deposited color anodized finish complying with Aluminum Association Code AA-C22A44. Finish is applied to 0.7 mils (18µm) minimum thickness onto chemically etched and pretreated aluminum. Color shall be Ruskin (specify color name).

CLEAR ANODIZE

Clear oxide coating for aluminum: Clear anodize preoxidizes the aluminum surface for a uniform clear finish not easily affected by natural oxidizing influences. Improved metallic luster appearance is similar to mill finish. 204-R1 (Aluminum Association Code AA-C22A31) provides 0.4 mil (10µm) minimum surface depth treatment recommended for normal weather exposure. 215-R1 (Aluminum Association Code AA-C22A41) provides 0.7 mils (18µm) minimum surface depth recommended for severely corrosive and abrasive atmospheric exposures. Both finish types available only on aluminum.

Louvers shall receive a 204-R1 clear anodize finish complying with Aluminum Association Code-C22A31. Finish is applied to chemically etched and pretreated aluminum to 0.4 mils (10µm) minimum surface depth by a 30-minute anodizing process. Louvers shall receive a 215-R1 clear anodize finish complying with Aluminum Association Code AA-C22A41. Finish is applied to chemically etched and pretreated aluminum to 0.7 mils (18µm) minimum surface depth by a 60-minute anodizing process.

For additional information regarding finish warranties, please reference the Ruskin Finishes Warranty document on www.ruskin.com. Dimensions in parentheses () indicate microns. Shernar 5000 is registered trademark of Sherwin-Williams.

* AAMA 2605-17a is the most stringent performance specification for organic coatings or exterior aluminum finishes in the industry, requiring 10 years of South Florida exposure.

† AAMA 2604-17a supersedes AAMA 2604-10 and requires five years of South Florida exposure.

Ruskin's 50 percent PVDF fluoropolymer, 70 percent PVDF fluoropolymer based finishes (Pearledize 50 and Pearledize 70) and prime coat finishes are provided by Sherwin-Williams. Twenty-year warranties are only available on extruded aluminum products, and are subject to restrictions. Consult Ruskin for additional information.

FIN-022020/replaces FIN-0119

CONTACT RUSKIN

The support and customer service you provide to your customers is only as good as the support we give to you. Contact Ruskin for in-depth insights and assistance.

The Ruskin support directory is a dynamic employee guide that provides insight into the vast industry knowledge and experience available to you. Reach out to our diverse team of professionals with backgrounds in architectural, life safety, indoor air quality, engineering applications, marketing, sales and customer service. Whatever your inquiry, we will have a suitable expert available to meet your needs and those of your clients.

At Ruskin each of our employees is viewed as having a unique individual value, with dignity and worth independent of the work they do. Ruskin employees have a sense of unity and commitment to one another; each contributes their work, so the collective efforts result in Ruskin continuing to set the standard for excellence in the industry. At no time in our history has our breadth and depth of air control expertise ever been greater.

Ruskin is a committed and dedicated company which looks outward to anticipate your needs as our representatives and those of the people you serve. We have dedicated ourselves to keeping the spirit of service, urgency and care with all our customer interactions at all times.

We will continue to innovate, improve and become more efficient; but most importantly and above all else, we will keep first and foremost in our minds a commitment to serve you.

LOUVER SALES HUNT GROUP PHONE

Louver, Penthouse, Sunshades
816-986-5494

louversales@ruskin.com

OTHER HUNT GROUP PHONE

Customer Service
816-986-5496

Diffusers & Energy Recovery Ventilators
816-986-5493

Air Control Solutions
(Life Safety, Commercial, Industrial, IAQ & Air Measurement)
816-986-5499



Ruskin Louvers and architectural products provide fresh intake and exhaust to buildings while having both architecturally and aesthetically pleasing appearances. A multitude of options are offered in performance, purpose, shapes and sizes, making Ruskin the authority in air control.

**FOR MORE INFORMATION CONTACT:
LOUVERSALES@RUSKIN.COM OR (816) 986-5494**