



ACCESS PANELS & DOORS CATALOG

DIVISION 08 31 00

DIVISION 08 31 13.53

DIVISION 08 31 16

DIVISION 08 34 73

ACCESS DOORS & FRAMES

SECURITY ACCESS DOORS & PANELS

ACCESS PANELS & FRAMES

SOUND CONTROL ACCESS PANELS



ACTIVAR CONSTRUCTION PRODUCTS GROUP INC.



JL Industries offers a wide range of fire-rated and non-rated access panels for both interior and exterior use. We are continually developing, updating and introducing new products to help you meet your market demands.

TABLE OF CONTENTS

FIRE-RATED SERIES ACCESS PANELS

FD - Flush	3
FDW, FDP - Concealed Frame	4
FD2, FD3 - Oversize	5
FD2CI, FD2WI - Inswing	6
FD2, FD3 - Double Door	7

NON FIRE-RATED SERIES ACCESS PANELS

TM - Multi-Purpose	8
TM - Special Features	9
TMW, TMP, TME - Concealed Frame	10
CT, CTW, CTE - Recessed Door	11
XT, XP - Exterior	12
AT, SM - Specialty	13
SP, HSP - Security	14
Lock Options - Security	15
STC - Sound-Rated	16

SELECT BY FIRE RATING

Rating	Use	Model	Listing	Page
1 HR Combustible	Ceiling	FD (Standard)	Intertek	3
		FDS (Standard Stainless)		3
		FDW (WB Bead)		4
		FDP (Plaster Bead)		4
1 1/2 HR "B" Label for 2 Hour Wall	Wall	FD (Standard)	UL	3
		FDS (Standard Stainless)		3
		FD Heavy Gauge (14g Standard)		3
		FDW (WB Bead)		4
		FDP (Plaster Bead)		4
2 HR	Wall	FD2W (Standard Oversized)	Intertek	5
		FD2WI (Inward-Swing Door)		6
		FD2L (Laundry Garbage)		7
		FD2DW (Double Leaf)		7
2 HR Non-Combustible	Ceiling	FD2C (Standard Oversize)	Intertek	5
		FD2DC (Double Leaf)		7
2 HR Combustible	Ceiling	FD2CI (Upward Opening)	Intertek	6
3 HR	Wall	FD3W (Standard)	Intertek	5
		FD3DW (Double Leaf)		7
3 HR Non-Combustible	Ceiling	FD (Standard)	Intertek	3
		FDS (Standard Stainless)		3
		FDW (WB Bead)		4
		FDP (Plaster Bead)		4
		FD3C (Standard Oversized)		5
		FD3DC (Double Leaf)		7

SEE INDIVIDUAL PRODUCT PAGES FOR DETAILS ON AVAILABLE SIZES.
UL - LISTED BY UL, INTERTEK - LISTED BY INTERTEK WARNOCK HERSEY

OUR BRANDS

Since 1947, we have been known for developing, manufacturing, and distributing quality products for the commercial construction industry. Activar Construction Products Group now offers products under the brand names of JL Industries, Air Louvers, Maxam Metal Products, Dur-Red Products, and Cato. With multiple manufacturing plants and the most stocking locations in the industry, we provide fast local distribution to most major metropolitan areas of the US.

JL Industries:

Since 1947, the legacy brand of JL Industries has been designing, testing, and manufacturing quality products. With knowledgeable factory sales reps who work closely with our distribution partners nationwide, we support you from the start of a project to closeout. We provide you with easy access to resources such as specifications, BIM information and product documentation directly on our website. We are proud of our reputation for excellence and reliability in the industry.

Find documentation and the most current product information on our website at activarcpvg.com

STOCKING WAREHOUSES: (see back page for locations)

We offer 1-3 day shipping on hundreds of our most popular products from our centrally-located warehouses in the U.S. With the combined resources of our three manufacturing facilities, you can create your own distinctive access panel with the size and features you need, for the look you want. Just ask us!

It is the responsibility of the customer to communicate specifications and product performance requirements that are needed for their application. This document is intended to convey potential product configurations and offerings. It is not to be used to imply or represent a specification or rating, of finished products shipped. Detailed, specific submittals can be created upon request. It is the responsibility of the customer to specify product accordingly to comply with local laws, codes, and ordinances.



FIRE-RATED FLUSH ACCESS PANELS: FD Series

FD™: Standard Panel (Wall and Ceiling):

Frame: 16 Gauge steel with a 1" flange. Welded-on masonry anchor

Door: 2" Thick, insulated 20 gauge steel with continuous hinge

Finish: White powder coat paint

Latch: Universal turn ring and key lock (U)

Sizes:

Minimum Size: 8" x 8"

Maximum Wall Size: 48" x 48" **Maximum Ceiling Size:** 24" x 36"

FDS™: Stainless Steel (Wall and Ceiling):

Frame: 16 Gauge stainless steel with 1" wall flange. Welded-on masonry anchor.

Door: 2" Thick, insulated 20 gauge stainless steel with continuous hinge

Finish: 304 stainless steel with #4 satin finish

Latch: Universal turn ring and key lock (U)

Sizes:

Minimum Size: 8" x 8"

Maximum Wall Size: 48" x 48" **Maximum Ceiling Size:** 24" x 36"

FD™: Heavy Gauge and Security (Wall):

Frame: 14 Gauge steel with 1" wall flange. Welded-on masonry anchor.

Door: 2" Thick, insulated 14 gauge steel with continuous hinge

Finish: White powder coat paint

Latch: Universal turn ring and key lock (U)

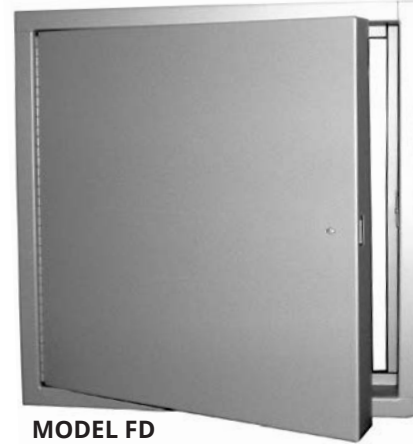
Sizes:

Minimum Size: 8" x 8"

Maximum Wall Size: 24" x 48"

Options: Galvanneal steel finish, knurled knob (U2), mortise slam lock prep (U3) or mortise slam lock installed (U4). Other gauges of frame and door.

Larger Sizes: See the FD2 and FD3



MODEL FD

Fire-Rating:

UL Listed and Labeled

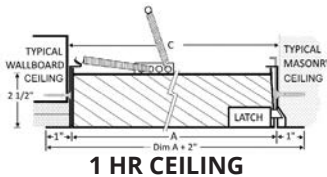
Wall Installation - 1-1/2 hour UL "B" label in a 2 hour fire barrier

Intertek Warnock Hersey Listed and Labeled

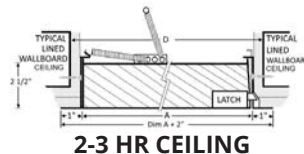
Ceiling Installation—3 hour non-combustible rating or 1 hour combustible rating

Latch and Lock Options

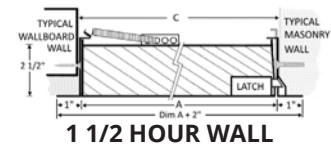
Standard (U) Universal Turn Ring & Key	Optional Knurled Knob (U2)	Optional Mortise Lock (U4)



1 HR CEILING



2-3 HR CEILING



1 1/2 HOUR WALL

A	C				D		Approximate Shipping Weight In Pounds			Number of Latches
Order Size = Door Size	1 1/2 hour UL "B" Label 2 hour Wall		1 Hour Combustible Ceiling Opening or 3 Hour Non-Combustible Ceiling		2 or 3 Hour Non-Combustible Ceiling Rating (Allowance for Fire-Rated Liner of Opening)					
Width x Height	Width	Height	Width	Height	Width	Height	FD	FDS	FD Heavy Gauge	
8" x 8"	8 3/8"	8 3/8"	8 3/8"	8 3/8"	9 5/8"	9 5/8"	6	6	11	1
10" x 10"	10 3/8"	10 3/8"	10 3/8"	10 3/8"	11 5/8"	11 5/8"	8	8	15	1
12" x 12"	12 3/8"	12 3/8"	12 3/8"	12 3/8"	13 5/8"	13 5/8"	10	10	17	1
14" x 14"	14 3/8"	14 3/8"	14 3/8"	14 3/8"	15 5/8"	15 5/8"	12	12	22	1
16" x 16"	16 3/8"	16 3/8"	16 3/8"	16 3/8"	17 5/8"	17 5/8"	15	15	17	1
18" x 18"	18 3/8"	18 3/8"	18 3/8"	18 3/8"	19 5/8"	19 5/8"	17	18	30	1
20" x 20"	20 3/8"	20 3/8"	20 3/8"	20 3/8"	21 5/8"	21 5/8"	21	22	51	1
20" x 30"	20 3/8"	30 3/8"	20 3/8"	30 3/8"	21 5/8"	31 5/8"	28	29	53	1
22" x 22"	22 3/8"	22 3/8"	22 3/8"	22 3/8"	23 5/8"	23 5/8"	26	27	51	1
22" x 30"	22 3/8"	30 3/8"	22 3/8"	30 3/8"	23 5/8"	31 5/8"	29	30	53	2
22" x 36"	22 3/8"	36 3/8"	22 3/8"	36 3/8"	23 5/8"	37 5/8"	36	37	58	2
24" x 24"	24 3/8"	24 3/8"	24 3/8"	24 3/8"	25 5/8"	25 5/8"	27	28	47	1
24" x 36"	24 3/8"	36 3/8"	24 3/8"	36 3/8"	25 5/8"	37 5/8"	37	38	60	2
24" x 48"	24 3/8"	48 3/8"	Maximum 1 hour Combustible Ceiling Size is 24"x 36"		Maximum 2 or 3 hour Non-Combustible Ceiling Size is 24"x 36"		54	56	85	2
30" x 30"	30 3/8"	30 3/8"					38	40	Maximum FD Heavy Gauge Size is 24"x 48"	2
32" x 32"	32 3/8"	32 3/8"					43	41		2
36" x 36"	36 3/8"	36 3/8"					52	54		2
36" x 48"	36 3/8"	48 3/8"					61	64		2
							100	110		

Custom Sizes Available Upon Request - For Larger Sizes See FD2 Series



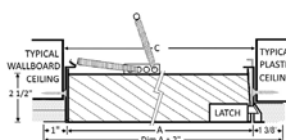
FIRE-RATED: WALLBOARD BEAD & PLASTER



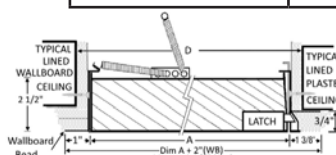
MODEL FDW WITH WALLBOARD BEAD



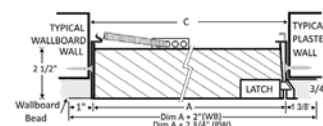
MODEL FDP WITH RECESSED PLASTER FLANGE



1 HR CEILING



2-3 HR CEILING



1 1/2 HOUR WALL

FIRE-RATED & INSULATED CONCEALED FRAME ACCESS PANELS: FDW™ & FDP™ Series

FDW™: Wallboard Bead (Wall or Ceiling):

Frame: 16 Gauge with 1" drywall bead that can be taped for a smooth appearance

Door: 2" Thick, insulated 20 gauge steel with continuous hinge

Finish: White powder coat paint

Latch: Universal turn ring and key lock (U)

Sizes: Minimum 8"x 8". Maximum wall 48" x 48", maximum ceiling 24" x 36".

FDP™: Recessed Plaster Flange (Wall or Ceiling):

Frame: 16 Gauge with 1 3/8" wide plaster flange recessed 3/4"

Door: 2" Thick, insulated 20 gauge steel with continuous hinge.

Finish: Gray powder coat paint

Latch: Universal turn ring and key lock (U)

Sizes:

Minimum Size: 8" x 8"

Maximum Wall Size: 48" x 48" **Maximum Ceiling Size:** 24" x 36"

Options: Stainless or galvanneal steel, knurled knob (U2), mortise slam lock prep (U3) or mortise slam lock installed (U4), stainless FDW

Fire-Rating of FDW & FDP:

UL Listed and Labeled

Wall Installation - 1-1/2 hour UL"B" label in a 2 hour fire barrier

Intertek Warnock Hersey Listed and Labeled

Ceiling Installation—3 hour non-combustible rating or 1 hour combustible rating

Latch and Lock Options



A		C		D		Approximate Shipping Weight	Number of Latches
Order Size =Door Size	1 1/2 hour UL "B" Label 2 hour Wall	1 Hour Combustible Ceiling Opening or 3 Hour Non-Combustible Ceiling	2 or 3 Hour Non-Combustible Ceiling Rating (Allowance for Fire-Rated Liner of Opening)				
Width x Height	Width	Height	Width	Height	Width	Height	Lbs.
8" x 8"	8 3/8"	8 3/8"	8 3/8"	8 3/8"	9 5/8"	9 5/8"	6
10" x 10"	10 3/8"	10 3/8"	10 3/8"	10 3/8"	11 5/8"	11 5/8"	8
12" x 12"	12 3/8"	12 3/8"	12 3/8"	12 3/8"	13 5/8"	13 5/8"	10
14" x 14"	14 3/8"	14 3/8"	14 3/8"	14 3/8"	15 5/8"	15 5/8"	12
16" x 16"	16 3/8"	16 3/8"	16 3/8"	16 3/8"	17 5/8"	17 5/8"	15
18" x 18"	18 3/8"	18 3/8"	18 3/8"	18 3/8"	19 5/8"	19 5/8"	17
20" x 20"	20 3/8"	20 3/8"	20 3/8"	20 3/8"	21 5/8"	21 5/8"	21
20" x 30"	20 3/8"	30 3/8"	20 3/8"	30 3/8"	21 5/8"	31 5/8"	28
22" x 22"	22 3/8"	22 3/8"	22 3/8"	22 3/8"	23 5/8"	23 5/8"	26
22" x 30"	22 3/8"	30 3/8"	22 3/8"	30 3/8"	23 5/8"	31 5/8"	29
22" x 36"	22 3/8"	36 3/8"	22 3/8"	36 3/8"	23 5/8"	37 5/8"	36
24" x 24"	24 3/8"	24 3/8"	24 3/8"	24 3/8"	25 5/8"	25 5/8"	27
24" x 36"	24 3/8"	36 3/8"	24 3/8"	36 3/8"	25 5/8"	37 5/8"	37
24" x 48"	24 3/8"	48 3/8"	Maximum 1 hour Combustible Ceiling Size is 24"x 36"	Maximum 2 or 3 hour Non-Combustible Ceiling Size is 24"x 36"			54
30" x 30"	30 3/8"	30 3/8"					38
32" x 32"	32 3/8"	32 3/8"					43
36" x 36"	36 3/8"	36 3/8"					52
36" x 48"	36 3/8"	48 3/8"					61

Custom Sizes Available Upon Request



JL Industries brings you Maxam® Series 2 and 3 hour fire-rated, insulated access panels are for wall and ceiling applications where control of temperature rise and heat transmission is required. Largest industry sizes available which are ideal for equipment access applications.

FD2W™: Oversize 2 Hour Walls

FD2C™: Oversize 2 Hour Ceilings

Frame: 16 Gauge galvalume steel up to 30" x 48" and 14 gauge for larger sizes

Flange: Exposed flange width is 7/8" up to 36" x 36" or 1-1/4" for larger sizes

Door: 18 Gauge galvalume steel with 22 gauge liner

Finish: Off white prime coat

Latch: 1/4" Allen key

Sizes:

Maximum Wall Size: 48" x 60" **Maximum Ceiling Size:** 36" x 36" or 30" x 48"



MODEL FD2W

FD3W™: Oversized 3 Hour Walls

FD3C™: Oversized 3 Hour Ceilings

Frame: 16 Gauge galvalume steel up to 30" x 48" and 14 gauge for larger sizes

Flange: Exposed flange width is 7/8" up to 36" x 36" or 1-1/4" for larger sizes

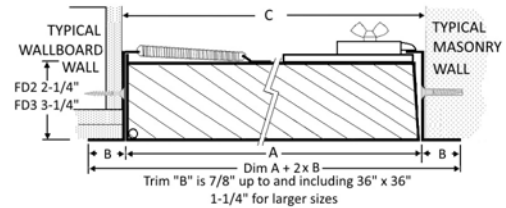
Door: 18 Gauge galvalume steel with 22 gauge liner

Finish: Off white prime coat

Latch: 1/4" Allen key

Sizes:

Maximum Wall Size: 48" x 60" **Maximum Ceiling Size:** 36" x 36" or 30" x 48"



Options: Wallboard flange, recessed 5/8" flange for drywall, recessed 5/8" with mesh flange for plaster, 304 stainless steel #4 finish

Fire-Rating of FD2W and FD2C:

Intertek Warnock Hersey listed and labeled 2 Hour Fire-Rating for vertical and horizontal installation.

Temp Rise Max: 30 Min: 250° F (139° C), 60 Min: 450° F (250° C)

Testing Standards:

Vertical: NFPA 252, UL 10B, CAN/ULC S10 4

Horizontal: UBC 43-7

Fire-Rating of FD3W and FD3C:

Intertek Warnock Hersey listed and labeled 3 Hour Fire-Rating for vertical and horizontal installation.

Temp Rise Max: 139° C / 250° F at 30 Min, 250° C / 450° F at 60 Min

Testing Standards:

Vertical: NFPA 252, UL 10B, CAN/ULC S10 4

Horizontal: UBC 43-7

Latch and Lock Options



C - Order Size = Rough Opening Size W x H	3 Hr Wall	C - Order Size = Rough Opening Size W x H	2 Hr Wall	2 Hr Ceiling	3 Hr Wall	3 Hr Ceiling
	FD3W		FD2W	FD2C	FD3W	FD3C
12 x 12	Y	22 x 22	See JL FD or FDS models for 8" x 8" up to 48" x 48"	See JL FD or FDS models for 8" x 8" up to 24" x 36"	Y	See JL FD or FDS models for 8" x 8" up to 24" x 36"
12 x 16	Y	22 x 30			Y	
12 x 18	Y	22 x 36			Y	
12 x 24	Y	24 x 24			Y	
12 x 30	Y	24 x 30			Y	
12 x 36	Y	24 x 36			Y	
12 x 48	Y	24 x 48		Y	Y	Y
14 x 14	Y	30 x 30		Y	Y	Y
16 x 16	Y	30 x 36		Y	Y	Y
16 x 24	Y	30 x 48		Y	Y	Y
18 x 18	Y	32 x 32		Y	Y	Y
18 x 24	Y	36 x 36		Y	Y	Y
18 x 30	Y	36 x 48		Maximum Ceiling Size 36" x 36"	Y	Maximum Ceiling Size 36" x 36"
18 x 36	Y	40 x 40			Y	
18 x 48	Y	40 x 48			Y	
20 x 20	Y	48 x 48			Y	
20 x 24	Y	36 x 60	Y			
20 x 30	Y	40 x 60	Y			
20 x 36	Y	48 x 60	Y			
20 x 40	Y	Custom Sizes Available Upon Request				



When space near access panels is restricted, use our access panels with doors that swing in or upwards to 90 degrees. When ceiling applications call for ASTM E-119 protection, the FD2CI provides control of temperature rise and heat transmission

FD2CI™: 2 Hour Ceilings with Upward-Swinging Door



MODEL FD2CI

Frame: 16 Galvanneal steel

Flange: Exposed exterior flange width is 7/8", over all width 1-1/2"

Door: Door swings up into the opening, or rests on trim when closed. 18 gauge door panel with 22 gauge liner, 1-1/2" high temperature insulation and inside pull handle.

Finish: Off white prime coat

Insulation: 1-1/2" High temperature insulation

Latch: 1/4" Allen key

Sizes:

Minimum Size: 12" x 12"

Maximum Size: 40" x 70"

Options: Knurled knob, mortise, 304 stainless #4 finish, smoke gasket, masonry anchors

FD2WI™: 2 Hour Walls with Inward-Swinging Door



MODEL FD2WI

Frame: 16 Galvanneal steel up to 30" x 48" and 14 gauge for larger sizes

Flange: Exposed exterior flange width is 7/8", over all width 1-1/2"

Door: 18 gauge galvanneal steel

Finish: Off white prime coat

Insulation: 1-1/2" High temperature ceramic insulation

Latch: 1/4" Allen key

Sizes:

Minimum Size: 16" x 16"

Maximum Size: 48" x 60"

Options: Knurled knob, mortise, 304 stainless #4 finish, smoke gasket, masonry anchors

Fire Rating FD2CI

Intertek Warnock Hersey listed and labeled:

2 Hour Combustible

Construction Fire Rating

4 Hour Non-Combustible

Construction Fire Rating

Horizontal Installation only

Testing Standards:

Horizontal: ASTM E-119, CAN/ULC-S101.

Fire Rating FD2WI

Intertek Warnock Hersey Listed and Labeled:

2 Hour Fire-Rating vertical installation only

Testing Standards:

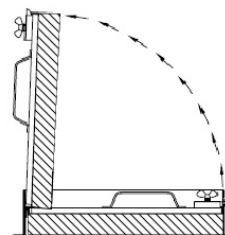
Vertical: NFPA 252, UL 10B, CAN/ULC S10 4

Latch and Lock Options

Standard 1/4" Allen Key



Optional Knurled



CEILING, UPWARD SWING,
2 HOUR FIRE-RATED



Our Maxam series 2-3 hour selection of the largest size access panels available today. These double door panels have a removeable center mullion allowing easier access to building components.

FD2D™ & FD3D™: 2-3 Hour Wall or Ceiling with Double Leaf

Frame: 16 Gauge galvanized steel up to 30" x 48" and 14 gauge for larger sizes

Flange: Exposed flange width is 7/8" up to 36" x 36" or 1-1/4" for larger sizes

Door: 18 Gauge galvanized steel with 22 gauge liner

Finish: Off white prime coat

Latch: 1/4" Allen key

Sizes:

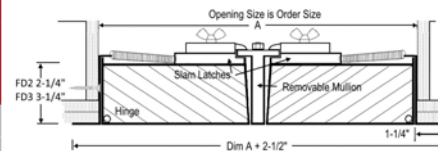
Minimum Size: 24" x 60"

Maximum Wall Size: 48" x 60"; **Maximum Ceiling Size:** 60" x 48"

Options: Wallboard flange, recessed 5/8" flange for drywall, recessed 5/8" with mesh flange for plaster, 304 Stainless steel with #4 finish, Knurled knob, non-locking two position handle, 1-1/8" mortise prep complete with mortise cylinder, central handle operator for two latches, smoke gasket, masonry anchors, continuous piano hinge for sizes under 48"



MODEL FD2D



Fire rating of FD2D:

Intertek Warnock Hersey listed and labeled 2 Hour Fire-Rating for vertical and horizontal installation
Temp Rise Max: 30 Min: 250° F (139° C), 60 Min: 450° F (250°C)
Testing Standards:
Vertical: NFPA 252, UL 10B, CAN/ULC S104
Horizontal: UBC 43-7

Latch and Lock Options

Standard 1/4" Allen Key	Optional Knurled Knob	Optional Mortise Lock

C - Order Size = Rough Opening Size W x H (hinge side)			FD2D Approx. Weight Lbs.	FD3D Approx Weight Lbs	Number of Latches
W x H	FD2D	FD3D			
Walls or Ceilings					
36 x 48	Y	Y	85	91	2
40 x 40	Y	Y	84	85	2
40 x 48	Y	Y	94	99	4
48 x 36	Y	Y	79	91	2
48 x 40	Y	Y	107	99	4
48 x 48	Y	Y	78	115	4
60 x 24	Y	Y	90	83	2
60 x 30	Y	Y	105	88	2
60 x 36	Y	Y	93	114	4
60 x 40	Y	Y	114	124	4
60 x 48	Y	Y	135	144	4
Additional sizes walls only below					
24 x 60	Y	Y	74	83	4
36 x 60	Y	Y	111	114	4
40 x 60	Y	Y	120	124	4
48 x 60	Y	-	-	-	4
Custom Sizes Available Upon Request					

A specialty Maxam series 2 hour fire rated door for laundry or garbage chute access. The wider 1 3/4" flange covers opening edges and the handle provides easy access to the chute. Optional smoke gasket for garbage chute installations.

FD2L™: Fire-Rated Access Panels - 2 Hour Laundry or Garbage Door for Walls

Frame: 16 Gauge galvanized steel

Flange: Exterior flange with 1-3/4" with a 3/8" return

Door: 18 Gauge galvanized steel with 22 gauge liner

Finish: Off white prime coat

Latch: Non-locking "T"-Handle 1/4" with interior release

Sizes:

Minimum Size: 16" x 16"

Maximum Wall Size: 30" x 30"

Options: 304 Stainless steel with #4 finish, 1-1/8" mortise prep complete with mortise cylinder, masonry anchors, smoke gasket for garbage chute



MODEL FD2L

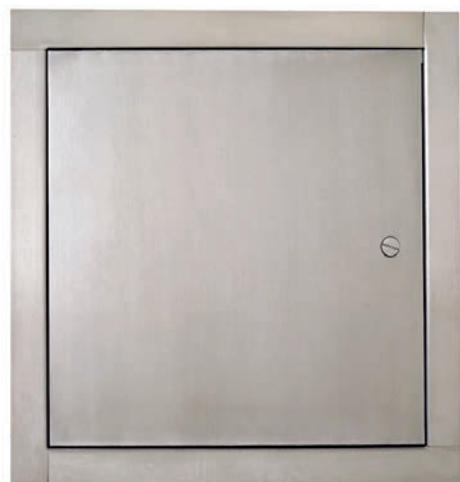
Fire Rating for FD2L

Intertek Warnock Hersey listed and labeled 2 Hour Fire-Rating for vertical installation only. Temp Rise Max: 30 Min: 250° F (139° C), 60 Min: 450° F (250°C). Testing Standard: Vertical: NFPA 252, UL 10B, CAN/ULC S104





MODEL TM



MODEL TMS STAINLESS STEEL

MULTI-PURPOSE FLUSH STEEL ACCESS PANEL: TM™ Series

TM: Standard Panel (Wall or Ceiling)

Frame: 16 Gauge cold rolled steel with a 1" wall flange

Door: 16 Gauge cold rolled steel access door mounted with mounted with 90° continuous, concealed hinge

Finish: White powder coat paint

Lock: Flush screwdriver-operated steel cam (C)

Sizes:

Minimum Size: 6" x 6"

Maximum Wall Size: 48" x 48"; **Maximum Ceiling Size:** 36" x 36"

See the CAP Series if larger sizes are needed or use double door option

TMS: Standard Stainless Steel Panel (Wall or Ceiling)

Frame: 18 Gauge stainless steel with 1" wall flange.

Door: 16 Gauge stainless steel access door mounted with 90° continuous, concealed hinge

Finish: 304 stainless with #4 satin finish

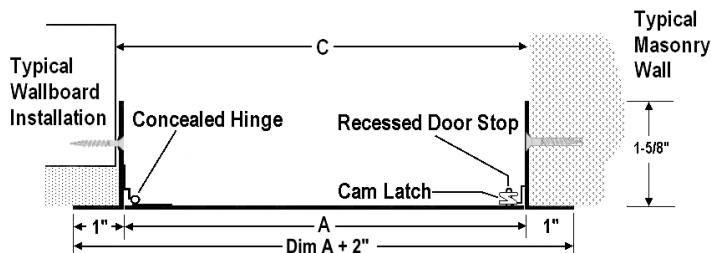
Lock: Flush screwdriver-operated cam (C)

Sizes:

Minimum Size: 6" x 6"

Maximum Size: 48" x 48"

Options: Double door, louvered vents, plexiglass view window, removeable door (no hinge), rainhood, gasketing, galvaneal steel (TMG), cylinder lock, mortise cam latch, mortise deadbolt lock, mortise slam latch, knob cam, torx, spanner or hex head cam, Other gauges.



Latch and Lock Options

Mortise Lock (M2)(U4)(B2)	Cylinder Lock (L)	Torx Head Cam (C2)	Spanner Head Cam (C3)	Hex Head Cam (C4)	Knob Cam (C5)

A-Order Size= Door Size WxH	C-Wall Opening Dimensions Fits ± 1/8" Opening Size		Approx. Shipping Weight	Number of Latches		A-Order Size= Door Size WxH	C-Wall Opening Dimensions Fits ± 1/8" Opening Size		Approx. Shipping Weight	Number of Latches
	Width	Height					Width	Height		
6" x 6"	6 1/2"	6 1/2"	4 lbs.	1		18" x 18"	18 1/2"	18 1/2"	12 lbs.	3
8" x 8"	8 1/2"	8 1/2"	4 lbs.	1		20" x 24"	20 1/2"	24 1/2"	15 lbs.	4
8" x 12"	8 1/2"	12 1/2"	6 lbs.	1		20" x 30"	20 1/2"	30 1/2"	20 lbs.	4
10" x 10"	10 1/2"	10 1/2"	6 lbs.	1		22" x 22"	22 1/2"	22 1/2"	17 lbs.	4
12" x 12"	12 1/2"	12 1/2"	7 lbs.	1		22" x 30"	22 1/2"	30 1/2"	22 lbs.	4
12" x 16"	12 1/2"	16 1/2"	9 lbs.	1		22" x 36"	22 1/2"	36 1/2"	24 lbs.	5
12" x 18"	12 1/2"	18 1/2"	10 lbs.	1		24" x 24"	24 1/2"	24 1/2"	18 lbs.	4
12" x 24"	12 1/2"	24 1/2"	12 lbs.	2		24" x 30"	24 1/2"	30 1/2"	22 lbs.	5
14" x 14"	14 1/2"	14 1/2"	9 lbs.	1		24" x 36"	24 1/2"	36 1/2"	25 lbs.	5
16" x 16"	16 1/2"	16 1/2"	11 lbs.	1		30" x 30"	30 1/2"	30 1/2"	30 lbs.	5
16" x 20"	16 1/2"	20 1/2"	13 lbs.	1		36" x 36"	36 1/2"	36 1/2"	41 lbs.	5

Custom Sizes and Special Modifications Available Upon Request, Sizes Not Shown May Be Ordered in 1/4" Increments



MODEL TM-2460CG-D
(12 Latches)

Need more access behind panels? Install a double leaf access door with a removable center mullion. Need ventilation? The TM louvered panel offers many options. Other options are available including removable doors, mortise locks, special lock preps, rainhoods, gasketing, or acrylic view windows.

DOUBLE DOOR ACCESS PANELS: TM Series

Available in steel or stainless steel in a wide range of sizes

Frame: 16 Gauge cold rolled steel frame with 1-1/4" wall flange. 1-5/8" depth. Removable center mullion attached by 2 screws at top and bottom.

Door: 16 Gauge cold rolled steel mounted with 90° continuous, concealed hinge

Finish: White powder coat paint

Lock: Flush screwdriver-operated cam (C)

Sizes:

Wall Size up to: 48" x 60"; **Ceiling Size up to:** 36" x 36"

Other size restrictions apply, consult customer service for sizes not shown.

Options & Special Features: See submittal



View of removable mullion from underside of access panel.

Order Size = Door Size W x H	C- Wall Opening Dimensions Fits ± 1/8" Opening Size	Number of Latches
Inches		
Walls & Ceilings		
24 x 36	24 1/4 x 36 1/4	6
24 x 48	24 1/4 x 48 1/4	8
24 x 60	24 1/4 x 60 1/4	12
36 x 36	36 1/4 x 36 1/4	10
Wall Sizes Only Below		
36 x 48	36 1/4 x 48 1/4	12
36 x 54	36 1/4 x 54 1/4	14
48 x 24	48 1/4 x 24 1/4	8
48 x 30	48 1/4 x 30 1/4	10
48 x 36	48 1/4 x 36 1/4	10
48 x 48	48 1/4 x 48 1/4	12
48 x 60	48 1/4 x 60 1/4	16
Other sizes available in 1/4" increments		

OTHER OPTIONS FOR TM SERIES ACCESS PANELS:



Rainhood



Gasketing



Louvered Panel



View Window



Removable Door



CONCEALED FRAME FLUSH ACCESS PANELS FOR DRYWALL OR PLASTER: TMW™, TMP™, and TME™

TMW: Wallboard Bead (Wall or Ceiling)

Frame: 16 Gauge with 1" drywall bead that can be taped and mudded

Door: 16 Gauge cold rolled steel with concealed continuous hinge

Finish: White powder coat paint

Lock: Flush screwdriver-operated cam (C)

Sizes:

Minimum Size: 6" x 6"

Maximum Wall Size: 36" x 48" Maximum Ceiling Size: 36" x 36"

TMP: Recessed Plaster Flange (Wall or Ceiling)

Frame: 16 Gauge cold rolled steel with 1 3/8" wide plaster flange, recessed 3/4"

Door: 16 Gauge cold rolled steel with concealed continuous hinge

Finish: White powder coat paint

Lock: Flush screwdriver-operated cam (C)

Sizes:

Minimum Size: 6" x 6"

Maximum Wall Size: 36" x 48" Maximum Ceiling Size: 36" x 36"

TME: Recessed Plaster Flange Extended (Wall or Ceiling)

Frame: 16 Gauge cold rolled steel with 2 3/4" wide plaster flange/steel lath recessed 3/4", for plaster application

Door: 16 Gauge cold rolled steel with concealed continuous hinge

Finish: White powder coat paint

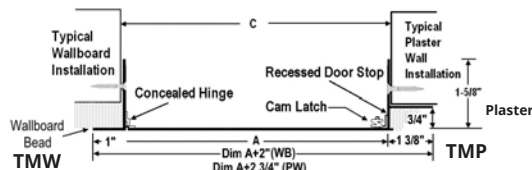
Lock: Flush screwdriver-operated cam (C)

Sizes:

Minimum Size: 6" x 6"

Maximum Wall Size: 36" x 48" Maximum Ceiling Size: 36" x 36"

Options: Stainless or galvanneal, cylinder lock, knob cam, torx, spanner or hex head cam, mortise cam latch, mortise deadbolt lock and mortise slam latch, plexiglass view window, removable door (no hinge)



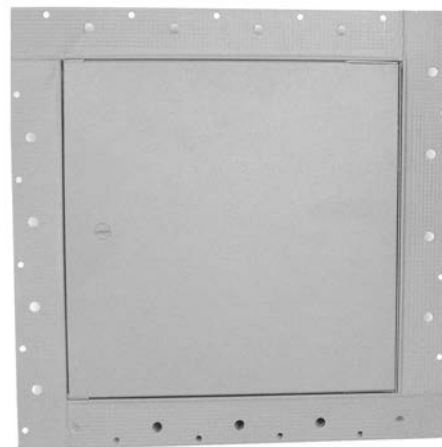
Latch and Lock Options

Mortise Lock (M2)(U4)(B2)	Cylinder Lock (L)	Torx Head Cam (C2)	Spanner Head Cam (C3)	Hex Head Cam (C4)	Knob Cam (C5)

Door Sizes and Wall Openings

A-Order Size = Door Size W x H	C- Wall Opening Dimensions Fits ± 1/8" Opening Size	Approx. Shipping Weight	Number of Latches
8" x 8"	8 1/2" x 8 1/2"	4 lbs.	1
10" x 10"	10 1/2" x 10 1/2"	5 lbs.	1
12" x 12"	12 1/2" x 12 1/2"	7 lbs.	1
14" x 14"	14 1/2" x 14 1/2"	8 lbs.	1
16" x 16"	16 1/2" x 16 1/2"	10 lbs.	1
16" x 20"	16 1/2" x 20 1/2"	12 lbs.	1
18" x 18"	18 1/2" x 18 1/2"	12 lbs.	3
22" x 22"	22 1/2" x 22 1/2"	16 lbs.	4
22" x 30"	22 1/2" x 30 1/2"	21 lbs.	4
24" x 24"	24 1/2" x 24 1/2"	19 lbs.	4

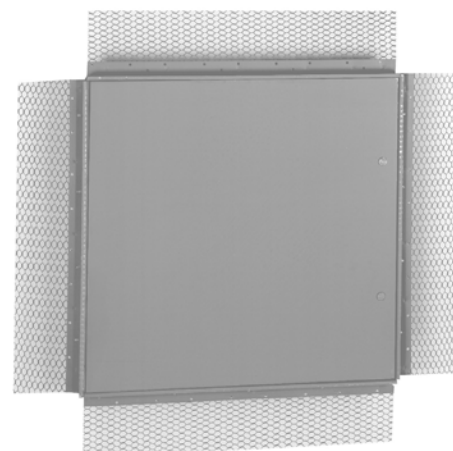
Custom Sizes and Special Modifications Available Upon Request



MODEL
TMW



MODEL
TMP



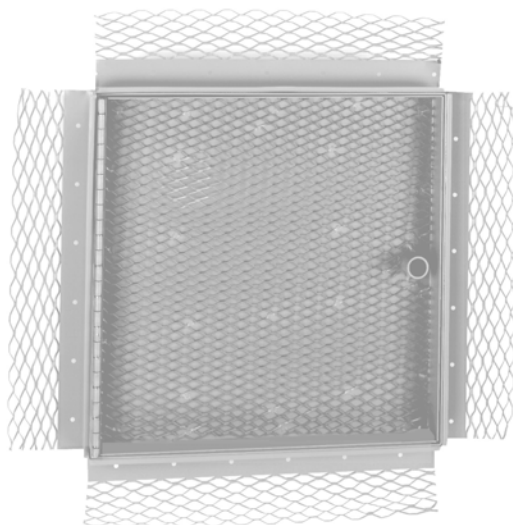
MODEL TME



**MODEL
CT**



**MODEL
CTW**



**MODEL
CTE**

CONCEALED FRAME FLUSH ACCESS PANELS FOR PLASTER OR TILE/WALLBOARD INSERT:

CTW™, CT™ and CTE™ Series

CT: Recessed Door with Trimless Frame: (Wall or Ceiling)

Door face is recessed 1/2" to accept application of acoustic tile or wallboard to match surrounding surface.

Frame: 14 Gauge cold rolled steel

Door: 16 Gauge cold rolled steel, recessed to accept 1/2" insert, with continuous hinge

Finish: White powder coat paint

Lock: Flush screwdriver-operated cam (C)

Sizes:

Minimum Size: 6" x 6"

Maximum Wall Size: 36" x 36"; Maximum Ceiling Size: 24" x 48"

CTW: Recessed Door with Drywall Bead: (Wall or Ceiling)

Door face is recessed 1" to accept wallboard insert to match surrounding surface. This access door provides the most seamless look of all JL models.

Frame: 14 Gauge cold rolled steel with 1" wide wallboard bead flange

Door: 16 Gauge cold rolled steel, recessed to accept 1/2" drywall insert, with continuous hinge

Finish: White powder coat paint

Lock: Flush screwdriver-operated cam (C)

Sizes:

Minimum Size: 8" x 8"

Maximum Wall Size: 36" x 36"; Maximum Ceiling Size: 24" x 48"

CTE: Recessed Flange and Door for Plaster Surfaces (Wall or Ceiling)

Door face has metal lath in 5/8" Recess, and the frame features 2 3/4" expanded metal lath wings to accept application of plaster to match surrounding plaster walls.

Frame: 14 Gauge cold rolled steel with 2 3/4" wide steel lath frame recessed 3/4"

Door: 16 Gauge cold rolled steel door with 5/8" recess, metal lath and continuous hinge

Finish: White powder coat paint

Lock: Flush screwdriver-operated cam (C)

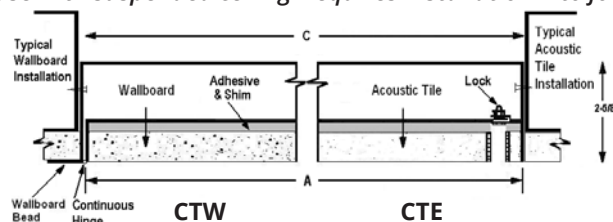
Sizes:

Minimum Size: 8" x 8"

Maximum Wall Size: 36" x 36"; Maximum Ceiling Size: 24" x 48"

Options: Cylinder lock, torx, spanner or hex head cam. Mortise prep or mortise lock installed, galvanneal steel, different gauges.

Not for use with suspended ceiling -requires installation into joists.



Door Sizes and Wall Openings

A-Order Size = Door Size WxH	C-Wall Opening Dimension	Approximate Shipping Weight			Number of Latches
	CT, CTW & CTE	CT	CTW	CTE	
12" x 12"	12 1/4" x 12 1/4"	7 lbs.	7 lbs.	9 lbs.	1
12" x 24"	12 1/4" x 24 1/4"	11 lbs.	11 lbs.	14 lbs.	2
18" x 18"	18 1/4" x 18 1/4"	12 lbs.	12 lbs.	14 lbs.	3
22" x 30"	22 1/4" x 30 1/4"	21 lbs.	21 lbs.	21 lbs.	4
24" x 24"	24 1/4" x 24 1/4"	19 lbs.	19 lbs.	20 lbs.	4
24" x 36"	24 1/4" x 36 1/4"	27 lbs.	27 lbs.	31 lbs.	5

Custom Sizes and Special Modifications Available Upon Request



WEATHER-RESISTANT R-13 ACCESS PANEL:

XT™ Series

Select this exterior access panel design with energy efficiency in mind. 2 inches of polyisocyanurate provides an R-value of 13, and EPDM gasketing provides the weather-resistance you need in sizes up to 48" x 48".

XTA: Galvanized & Aluminum Flush Access Panel

Frame: 16 Gauge galvanized steel frame

Door: 2" Thick polyisocyanurate Insulation, 0.040 aluminum door panel

Finish: White powder coat paint

Latch: (F4) Lockable compression paddle latch, black is the standard latch

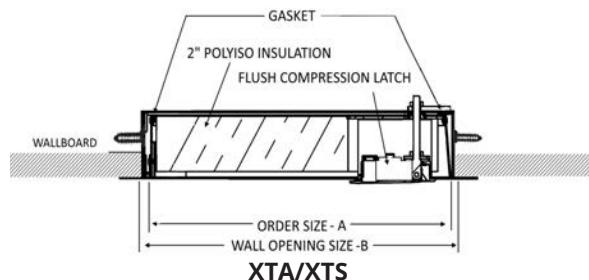
XTS Stainless Flush Access Panel

Frame: 16 Gauge galvanized steel frame

Door: 2" Thick polyisocyanurate insulation, 20 gauge stainless steel door panel

Finish: 304 Stainless with #4 Finish

Latch: (F4) Lockable compression paddle latch, black is the standard latch



WEATHER-RESISTANT R-5.7 ACCESS PANEL:

XP™ Series

This cost-effective solution for providing access to building components features an insulated and gasketed door with interior and exterior handles. Available in a galvanized/aluminum or stainless construction for flush or plaster installation up to 48" x 48".

XPA / XPEA: Access Panel

XPA or XPEA: Galvanized & aluminum flush access panel

XPA Frame: 16 Gauge galvanized steel frame with 1" flange

XPEA Frame: 16 Gauge galvanized steel frame with plaster flange recessed 3/4"; 2-3/4" wide

Door: 2" Thick insulated 0.040 aluminum door

Finish: White powder coat paint

XPS: Stainless Steel Flush Access Panel

XPS: Frame: 16 Gauge stainless steel frame with 1" flange

XPES Frame: 16 Gauge stainless steel frame with plaster flange recessed 3/4"; 2-3/4" wide

Door: 2" Thick insulated 20 gauge stainless steel door

Finish: #304 Stainless steel with #4 finish

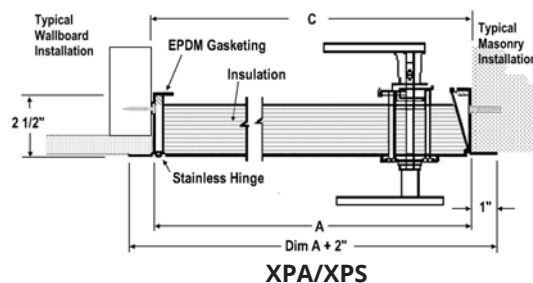
All Models Include: Continuous stainless hinges, EPDM foam rubber bulb seal and non-locking compression chrome plated handles (H2)

Options: Chrome-plated locking handle (H3), removable locking handle (H4), paint colors, rainhood



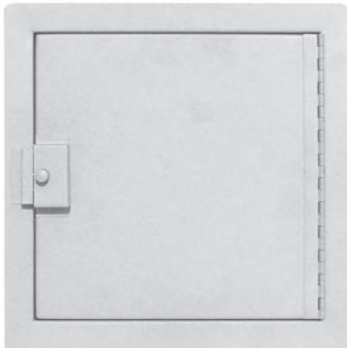
MODEL XPA

MODEL XPEA WITH NON-LOCKING HANDLE



Door Sizes and Wall Openings: Models XTA, XTS, XPA, XPS, XPEA, AND XPES							
A - Order Size = Door Size W x H	C-Wall Opening W x H	Number of Handles	Approximate Shipping Weight	A - Order Size = Door Size W x H	C-Wall Opening W x H	Number of Handles	Approximate Shipping Weight
12" x 12"	12 3/8" x 12 3/8"	1	11 lbs.	24" x 30"	24 3/8" x 30 3/8"	2	40 lbs.
14" x 14"	14 3/8" x 14 3/8"	1	15 lbs.	24" x 36"	24 3/8" x 36 3/8"	2	42 lbs.
18" x 18"	18 3/8" x 18 3/8"	1	19 lbs.	24" x 48"	24 3/8" x 48 3/8"	2	57 lbs.
20" x 24"	20 3/8" x 24 3/8"	XP 1, XT 2	30 lbs.	30" x 30"	30 3/8" x 30 3/8"	2	44 lbs.
20" x 30"	20 3/8" x 30 3/8"	2	32 lbs.	30" x 36"	30 3/8" x 36 3/8"	2	56 lbs.
22" x 30"	22 3/8" x 30 3/8"	2	34 lbs.	36" x 36"	36 3/8" x 36 3/8"	2	61 lbs.
22" x 36"	22 3/8" x 36 3/8"	2	40 lbs.	36" x 48"	36 3/8" x 48 3/8"	2	75 lbs.
24" x 24"	24 3/8" x 24 3/8"	XP 1, XT 2	27 lbs.	48" x 48"	48 3/8" x 48 3/8"	2	108 lbs.

Custom Sizes Available Upon Request



**MODEL AT-WITH
STANDARD C5
HANDLE**



**MODEL AT-WITH
OPTIONAL F1 HANDLE**



MODEL SM PANEL

GASKETED ACCESS PANEL: AT™ Series

This Gasketed Panel is ideal for laboratories, pressurized rooms, climate-controlled rooms, dusty or high-moisture environments.

Frame: 16 Gauge cold rolled steel

Door: 16 Gauge cold rolled steel

Gasket: Fully gasketed on all sides with EPDM rubber

Finish: White powder coat paint

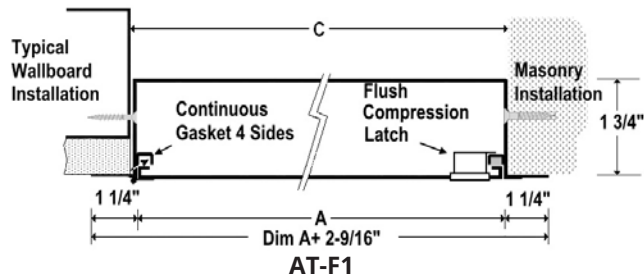
Latch: Knob cam (C5)

Sizes:

Minimum Size: 12" x 12"

Maximum Size: 36" x 36"

Options: Flush handle (F1), locking flush handle (F2), other locks/latches, #4 finish stainless steel or galvalneal steel, other gauges



A - Order Size = Door Size W x H	C-Wall Opening Dimensions		Approx. Shipping Weight	Latch
	Width	Height		
12" x 12"	12 3/8"	12 3/8"	7 lbs.	1
18" x 18"	18 3/8"	18 3/8"	16 lbs.	1
24" x 24"	24 3/8"	24 3/8"	28 lbs.	2
24" x 36"	24 3/8"	36 3/8"	42 lbs.	2

Custom Sizes Available Upon Request

SURFACE-MOUNT ACCESS PANEL: SM™ Series

The SM is an economical surface-mounting panel that quickly and easily installs with screws through the corners of the frame. It is suitable for installation in wallboard or plaster.

Frame: 16 cold rolled gauge trim, 1" wide flange

Door: 16 Gauge cold rolled steel

Finish: White powder coat paint

Lock: Screwdriver operated cam lock (C)

Sizes:

Minimum Size: 8" x 8"

Maximum Size: 36" x 36"

Options: #4 Satin finish stainless steel, optional colors, cylinder Lock, knob cam, torx, spanner or hex head cam

Latch and Lock Options

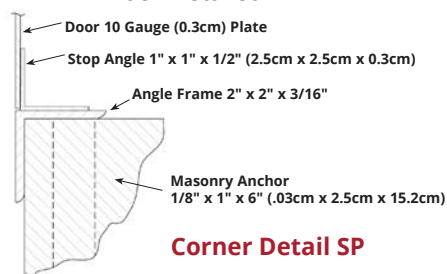
Cylinder Lock (L)	Torx Head Cam (C2)	Spanner Head Cam (C3)	Hex Head Cam (C4)	Knob Cam (C5)

A - Order Size = Door Size W x H	C-Wall Opening Dimensions		Approx. Shipping Weight	Number of Latches
	Width	Height		
8" x 8"	8"	8"	3 lbs.	1
12" x 12"	12"	12"	7 lbs.	1
16" x 16"	16"	16"	12 lbs.	1
24" x 24"	24"	24"	27 lbs.	4

Custom Sizes Available Upon Request



MODEL SP
Shown with Detention Deadbolt
Lock Installed



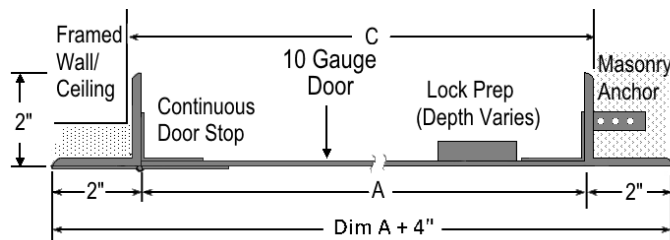
Corner Detail SP



MODEL HSP
Shown with Mortise Deadbolt
Lock Installed

FLAT FRAME STEEL SECURITY PANEL: SP™ Series

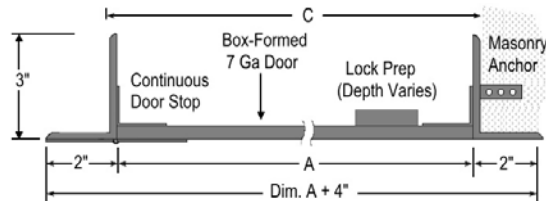
Frame: 2" x 2" x 3/16" angle frame with 2" flange, welded at corners. Continuous 1" stop.
Door: 10 gauge plate steel door mounted on two heavy-duty detention hinges welded to the frame
Finish: White powder coat paint
Lock: Select lock prep or lock installed. See page 15 for options.
Anchors: Heavy duty steel masonry anchors welded to frame at factory
Sizes: Minimum 8"x 8". Maximum wall 48"x 48", maximum ceiling 24"x 24"
Options: #4 Finish stainless steel



Model SP

FLAT FRAME STEEL HIGH SECURITY PANEL: HSP™ Series

Frame: 2" x 3" x 3/16" angle frame with 2" flange, welded at corners. Continuous 1" stop.
Door: 7 gauge box-formed steel door mounted on two heavy-duty 4" butt hinges welded to the frame
Finish: White powder coat paint
Lock: Select lock prep or lock installed. See page 15 for options.
Anchors: Heavy duty steel masonry anchors welded to frame at factory
Sizes: Minimum 8"x 8". Maximum wall 48"x 48", maximum ceiling 24"x 24"
Options: #4 Finish stainless steel



Model HSP

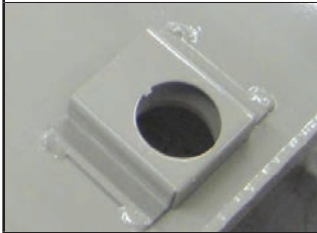
A - Order Size = Door Size W x H	C-Opening Dimensions		SP Approximate Ship Weight (lbs)	HSP Approximate Ship Weight (lbs)	Number of Locks
	Inches	Width			
8" x 8"	8 3/4"	8 3/4"	16	20	1
10" x 10"	10 3/4"	10 3/4"	20	25	1
12" x 12"	12 3/4"	12 3/4"	24	30	1
14" x 14"	14 3/4"	14 3/4"	29	36	1
16" x 16"	16 3/4"	16 3/4"	32	40	1
18" x 18"	18 3/4"	18 3/4"	38	47	1
24" x 24"	24 3/4"	24 3/4"	52	65	1 lock, 2 security screws
Sizes Below Walls Only					
24" x 36"	24 3/4"	36 3/4"	72	90	1 lock, 3 security screws
24" x 48"	24 3/4"	48 3/4"	90	112	1 lock, 3 security screws

Add 1 lb. for Mortise Deadbolt Prep, or 4 lbs. for Detention Lock installed. For Model SP Panels of 32" or Larger, We Recommend Security Screws be Installed with Lock for Additional Security. Custom Sizes and Modifications Available Upon Request



MORTISE CAM LATCH

Prep



MCP: Prepped for mortise cylinder lock by others. Cylinder lock must be 1- $\frac{1}{8}$ " diameter x 1- $\frac{1}{4}$ " long mortise cylinder with standard cam. Cylinders by others require threaded lock nut ring.

Installed



MCP-02: Includes installed mortise cylinder Kaba Ilco 7205SC1, 1- $\frac{1}{8}$ " Dia x 1- $\frac{1}{4}$ " long mortise cylinder with standard cam (PN: 06431), 2 keys (PN: 06431-KEY) and lock nut ring (PN: 0646).

MORTISE DEAD BOLT

Prep



MDP: Prepped for mortise deadbolt cylinder lock by others. Cylinder lock must be 1- $\frac{1}{8}$ " Dia x 1- $\frac{1}{4}$ " long mortise cylinder with Adams Rite cam. Longer lengths require adjustable lock collar (PN: SL-ALC).

Installed



MDP-03: Includes installed Kaba Ilco 7205SC2, 1- $\frac{1}{8}$ " x 1- $\frac{1}{4}$ " long mortise cylinder with Adams Rite cam (PN: 06441) and includes 2 keys (PN: 06431-KEY).
MDP-07: Includes installed temporary construction core mortise deadbolt cylinder Best 1E74C181RP3626, 1- $\frac{1}{8}$ " Dia x 1- $\frac{1}{4}$ " long mortise cylinder with C181 Adam Rite cam (PN: SL-1E74). Operation key (PN: 040004) & control key (PN: 040005) to remove the construction core ordered separately.

DETENTION SLAM LOCK

Prep



DSPP-25: Prepped for detention slam lock Airteq 5017 by others.

Installed



DSPI-25: Includes Includes: Airteq 5017 medium security for slam-locking with stainless steel latchbolt 1" x 7/16" bolt throw (PN: DDI-5017). Keys sold separately (DDK-5017)

DETENTION DEAD BOLT

Prep



DDPP-17: Prepped for detention deadbolt lock Airteq 5010.
This mounting also accommodates Southern Folger 1010A

Installed



DDPI-17: Includes installed Airteq 5010, medium security deadbolt, with zinc plated steel bolt 1- $\frac{1}{2}$ " x 3/4" and 5/8" bolt throw (PN: DDI-5010). Keys sold separately (PN: DDK-5010)

DETENTION DEAD BOLT MOGUL LOCK

Prep



MLPP-19: Prepped for detention deadbolt with mogul cylinder Airteq 5010M.

Installed



MLPI-19: Includes installed Airteq 5010M medium security deadbolt with mogul key cylinder, zinc plated steel bolt 1- $\frac{1}{2}$ " x 1/2" and 5/8" throw (PN: DDI-5010M). Includes 2 keys (PN: DDK-5010M)



SOUND RATED

STC-65 Rated Access Panel for walls and ceilings. The STC™ Panel will help you to meet noise containment and sound transmission blocking requirements for walls in new construction or building updates.

- STC 65 and OITC 51 sound-rated
- Used in music rooms, performing spaces, healthcare facilities

SOUND RATED: STC Series

Frame: 16 Gauge CRS with 1" flange, and continuous gasketing

Door: 2 1/4" Thick with heavy duty, continuous hinge and sound -blocking insulation

Finish: White powder coat paint

Latch/Lock: Black lockable compression paddle latch

STC Rating: 65 when installed as directed in STC-rated wall

Sizes: Minimum 8"x 8", maximum 36"x 36"

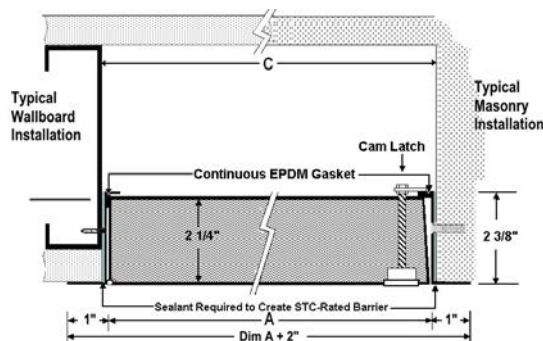
Options: #4 Stainless steel, galvaneal steel, optional paint colors



MODEL STC-3636F4



MODEL STC-1212F4



Tested in accordance with

ASTM E90-09

Sound transmission loss of building partitions

Classified in accordance with

ASTM E413-10 Classification for rating sound insulation of partitions or floors

ASTM E1223-10a Standard classification for rating indoor/outdoor sound attenuation

Model Size is Door Size			
A - Order Size = Door Size W x H	Wall Opening Dimension C	Approx. Weight	Number of Latches
STC-1212	12-3/8" x 12-3/8"	9	1
STC-2222	22-3/8" x 22-3/8"	21	2
STC-2424	24-3/8" x 24-3/8"	24	2
STC-2436	24-3/8" x 36-3/8"	35	2

Other Sizes in 1/4" Increments Door Size Available

Examples of Optional Colors at Additional Cost - Painted Samples Available



Latch and Lock Options

Standard Locking
Black Latch (F4)



CHECK OUT ALL OUR BRANDS WITH A VARIETY OF PRODUCTS!

Manufacturing locations: Bloomington, MN | Commerce, CA | Fort Myers, FL | Burnaby, BC, Canada

Warehouses: Dallas, TX | Chicago, IL | Seattle, WA | Atlanta, GA | Lancaster, PA | Salt Lake City, UT



ROOF ACCESSORIES



FIRE PROTECTION



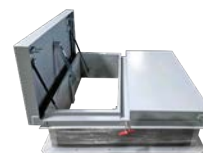
ENTRANCE MATS,
GRATES, & GRILLES



VISION LITES



DOOR LOUVERS



SMOKE VENTS

SEE MORE ACTIVAR CONSTRUCTION PRODUCTS GROUP OFFERINGS ON OUR WEBSITE WWW.ACTIVARCPG.COM



800-554-6077

sales@activarcpg.com

www.activarcpg.com

ACTIVAR CONSTRUCTION PRODUCTS GROUP INC.

6-17-2025