

# ACCESSORIES

Connection Modules



# **ACCESSORIES**

## CONTENTS

---

Connection Accessories .....	2-5
Quick Binrak Nut .....	6
Connection Accessories .....	7
Cable Clamp .....	8-9
Earthing Components .....	10-11
Piping Systems .....	12-14
Beam Clamp .....	15
Fixing Accessories .....	16-17
Pipe Accessories .....	18-31

Description	Tensile Load (kg)	Weight (kg/pcs)	Order Code
Hex. Head Bolt M6x20	100	0,007	1000550
Hex. Head Bolt M8x20	150	0,012	1000559
Hex. Head Bolt M10x30	400	0,027	1000566
Hex. Head Bolt M10x40	400	0,031	1000567
Hex. Head Bolt M10x50	400	0,035	1000568
Hex. Head Bolt M12x30	600	0,039	1000695

Hex. Head Bolt



Description	Tensile Load (kg)	Weight (kg/pcs)	Order Code
M6 Steel Nut	100	0,004	1000520
M8 Steel Nut	150	0,005	1000521
M10 Steel Nut	400	0,010	1000522
M12 Steel Nut	600	0,015	1000964

Steel Nut



(Lacquered)

Description	Weight (kg/pcs)	Order Code
M6 Washer	0,001	1000501
M8 Washer	0,002	1000502
M10 Washer	0,003	1000504
M12 Washer	0,005	1000505

Washer



(Lacquered)

Description	Weight (kg/pcs)	Order Code
M6 Spring Washer	0,001	1000506
M8 Spring Washer	0,001	1000507
M10 Spring Washer	0,002	1000508
M12 Spring Washer	0,003	1000509

Spring Washer



Description	Tensile Load (kg)	Weight (kg/pcs)	Order Code
M6 Flanged Nut	100	0,007	1001091
M8 Flanged Nut	150	0,013	1001181
M10 Flanged Nut	400	0,020	1000182
M12 Flanged Nut	600	0,027	1005927

Flanged Nut



- Please indicate order code in your orders.
- Please contact us for special dimensions.
- Material weights may vary by  $\pm 10\%$

- All dimensions are given as in mm

- EG= Electro-Galvanized
- PG= Pre-Galvanized
- SS= Stainless Steel
- HDG= Hot Dip Galvanized

Description	Weight (kg/pcs)	Order Code
M6 Spring Traverse Nut (long spring)	0,030	1004216
M8 Spring Traverse Nut (long spring)	0,028	1001311
M10 Spring Traverse Nut (long spring)	0,039	1001312
M12 Spring Traverse Nut (long spring)	0,038	1001313

- 41x41 Suitable for 41x41 BINRAK.

### Spring Traverse Nut



Description	Weight (kg/pcs)	Order Code
M6 Spring Traverse Nut (short spring)	0,030	1065332
M8 Spring Traverse Nut (short spring)	0,028	1065333
M10 Spring Traverse Nut (short spring)	0,039	1065334
M12 Spring Traverse Nut (short spring)	0,038	1065335

- 41x21 Suitable for 41x41 BINRAK.

Description	Weight (kg/pcs)	Order Code
M6 Travers Nut	0,020	1003108
M8 Travers Nut	0,025	1003105
M10 Travers Nut	0,035	1003106
M12 Travers Nut	0,038	1003107

### Travers Nut



Description	Weight (kg/pcs)	Order Code
M6 Spring Sheet Traverse Nut(long spring)	0,028	1026710
M8 Spring Sheet Traverse Nut(long spring)	0,031	1026711
M10 Spring Sheet Traverse Nut(long spring)	0,036	1026712
M12 Spring Sheet Traverse Nut(long spring)	0,040	1026713

- 41x41 Suitable for 41x41 BINRAK.

### Spring Sheet Traverse Nut



Description	Weight (kg/pcs)	Order Code
M6 Spring Sheet Traverse Nut(short spring)	0,028	1065336
M8 Spring Sheet Traverse Nut(short spring)	0,031	1065337
M10 Spring Sheet Traverse Nut(short spring)	0,036	1065339
M12 Spring Sheet Traverse Nut(short spring)	0,040	1065340

- 41x21 Suitable for 41x41 BINRAK.

Description	Weight (kg/pcs)	Order Code
M6 Sheet Sleeper Nut	0,018	1026714
M8 Sheet Sleeper Nut	0,023	1026715
M10 Sheet Sleeper Nut	0,032	1026716
M12 Sheet Sleeper Nut	0,035	1026717

### Sheet Sleeper Nut



- Please indicate order code in your orders.
- Please contact us for special dimensions.
- Material weights may vary by  $\pm 10\%$

- All dimensions are given as in mm

- EG= Electro-Galvanized
- PG= Pre-Galvanized
- SS= Stainless Steel
- HDG= Hot Dip Galvanized

Description	Tensile Load (kg)	Weight (kg/pcs)	Order Code
Threaded Rod (M8x500) Lacquered	150	0,145	5000039
Threaded Rod (M8x1000) Lacquered	150	0,295	5000038
Threaded Rod (M8x1500) Lacquered	150	0,440	5000035
Threaded Rod (M8x2000) Lacquered	150	0,600	5000036
Threaded Rod (M8x3000) Lacquered	150	0,897	5000006
Threaded Rod (M10x500) Lacquered	400	0,245	5000037
Threaded Rod (M10x1000) Lacquered	400	0,490	5000032
Threaded Rod (M10x1500) Lacquered	400	0,735	5000031
Threaded Rod (M10x2000) Lacquered	400	1,030	5000030
Threaded Rod (M10x3000) Lacquered	400	1,520	5000029
Threaded Rod (M12x2000) Lacquered	600	1,300	5000024
Threaded Rod (M6x1000) Electrogalvanized	100	0,222	5000357
Threaded Rod (M6x2000) Electrogalvanized	100	0,444	5000358
Threaded Rod (M6x3000) Electrogalvanized	100	0,666	5000359
Threaded Rod (M8x500) Electrogalvanized	150	0,145	5000169
Threaded Rod (M8x1000) Electrogalvanized	150	0,295	5000170
Threaded Rod (M8x1500) Electrogalvanized	150	0,440	5000171
Threaded Rod (M8x2000) Electrogalvanized	150	0,600	1004220
Threaded Rod (M8x3000) Electrogalvanized	150	0,897	5000302
Threaded Rod (M10x500) Electrogalvanized	400	0,245	5000172
Threaded Rod (M10x1000) Electrogalvanized	400	0,490	5000173
Threaded Rod (M10x1500) Electrogalvanized	400	0,735	5000174
Threaded Rod (M10x2000) Electrogalvanized	400	1,030	5000175
Threaded Rod (M10x3000) Electrogalvanized	400	1,571	5000301
Threaded Rod (M12x2000) Electrogalvanized	600	1,030	5001197

Threaded Rod



Description	Tensile Load (kg)	Weight (kg/pcs)	Order Code
Extension Nut (M8)	150	0,030	1004313
Extension Nut (M10)	400	0,070	1004312
Extension Nut (M12)	600	0,115	1004282

Extension Nut



(Lacquered)

- Please indicate order code in your orders.
- Please contact us for special dimensions.
- Material weights may vary by  $\pm 10\%$

- All dimensions are given as in mm

- EG= Electro-Galvanized
- PG= Pre-Galvanized
- SS= Stainless Steel
- HDG= Hot Dip Galvanized

# E-LINE A

## Connection Accessories

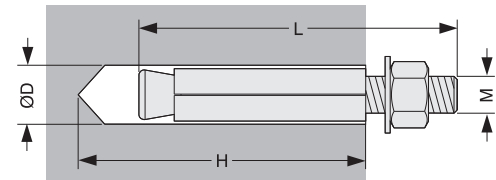


Description	Tensile Load (kg)	Weight (kg/pcs)	Order Code
EAE Pull-off Dowel (M6)	100	0,028	5000027
EAE Pull-off Dowel (M8)	150	0,030	5000033
EAE Pull-off Dowel (M10)	400	0,070	5000023
EAE Pull-off Dowel (M12)	600	0,120	5000022

Pull-off Dowel



M	L (mm)	ØD (mm)	H (mm)
M6	65	10	75
M8	60	11	70
M10	85	15	95
M12	90	16	100

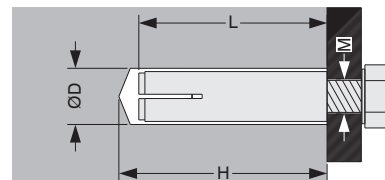


Description	Tensile Load (kg)	Weight (kg/pcs)	Order Code
Driven Dowel (M8)	150	0,010	5000018
Driven Dowel (M10)	400	0,020	5000017

Driven Dowel



M	L (mm)	ØD (mm)	H (mm)
M8	30	10	30
M10	40	12	40

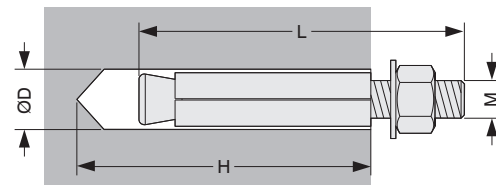


Description	Tensile Load (kg)	Weight (kg/pcs)	Order Code
Pull Dowel (Jacketed) (M6)	100	0,033	5000007
Pull Dowel (Jacketed) (M8)	150	0,030	5000008
Pull Dowel (Jacketed) (M10)	400	0,070	5000009
Pull Dowel (Jacketed) (M12)	600	0,120	5000010

Pull Dowel (Jacketed)



M	L (mm)	ØD (mm)	H (mm)
M6	46	8	55
M8	55	10	80
M10	85	12	95
M12	90	16	100

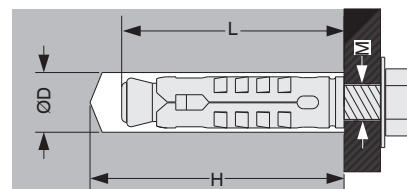


Description	Tensile Load (kg)	Weight (kg/pcs)	Order Code
Pull Dowel "S" Type (M6)	100	0,011	5000011
Pull Dowel "S" Type (M8)	150	0,016	5000012
Pull Dowel "S" Type (M10)	400	0,031	5000013
Pull Dowel "S" Type (M12)	600	0,053	5000014

Pull Dowel "S" Type



M	L (mm)	ØD (mm)	H (mm)
M6	46	10	50
M8	50	12	60
M10	55	15	70
M12	80	18	85



- Please indicate order code in your orders.
- Please contact us for special dimensions.
- Material weights may vary by ± 10%

- All dimensions are given as in mm

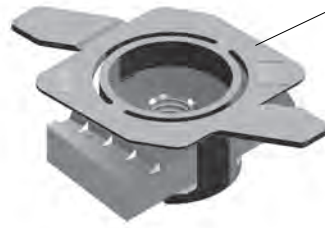
- EG= Electro-Galvanized
- SS= Stainless Steel
- PG= Pre-Galvanized
- HDG= Hot Dip Galvanized

# E-LINE A

## Quick Binrak Nut

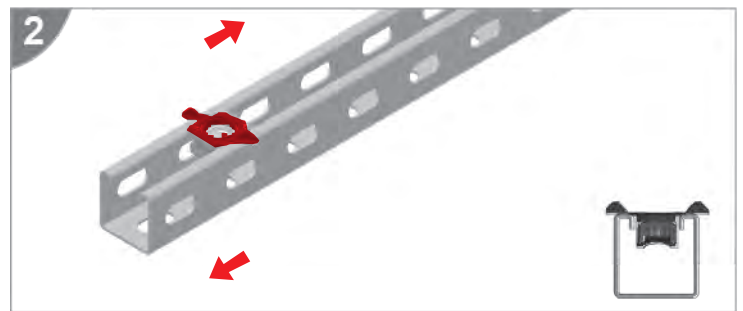
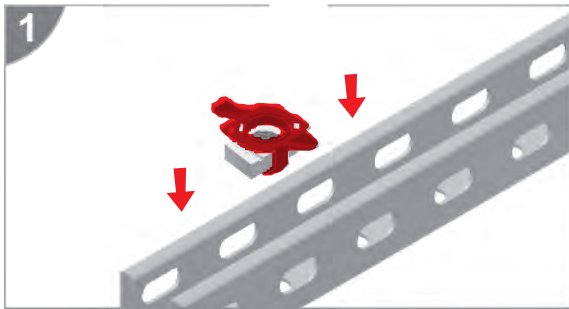


Description	Weight (kg/pcs)	Order Code
M6 Quick Binrak Nut	0,028	1021244
M8 Quick Binrak Nut	0,027	1021245
M10 Quick Binrak Nut	0,034	1021246
M12 Quick Binrak Nut	0,032	1021247

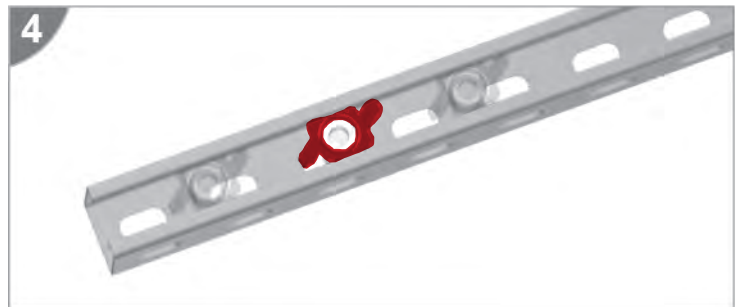
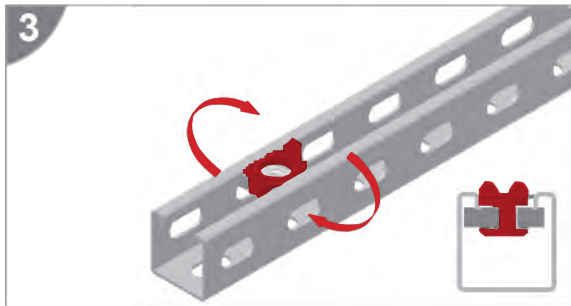


**Note:** The products will have different colored plastic parts according to their sizes.

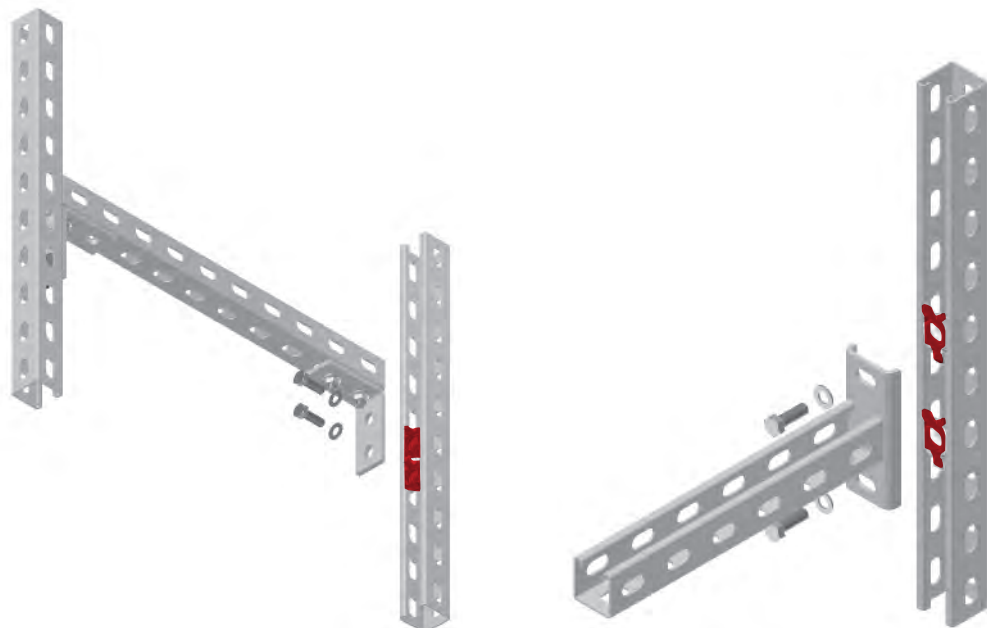
- M6 products will be white
- M8 products will be red
- M10 products will be blue
- M12 products will be gray



1-2. Place the Quick Nut into Binrak Channel.



3-4. By turning the Quick Nut in the direction of the arrow, select its position on the Binrak Channel.



- Please indicate order code in your orders.
- Please contact us for special dimensions.
- Material weights may vary by  $\pm 10\%$

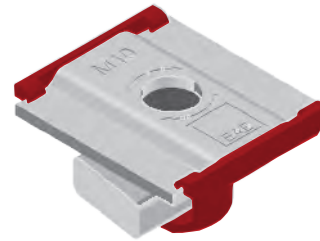
• All dimensions are given as in mm

- EG= Electro-Galvanized
- SS= Stainless Steel
- PG= Pre-Galvanized
- HDG= Hot Dip Galvanized

# E-LINE A

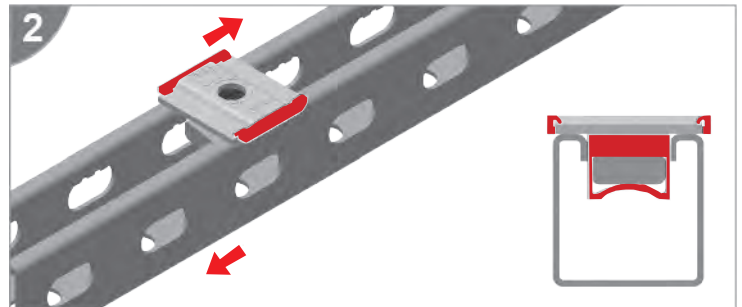
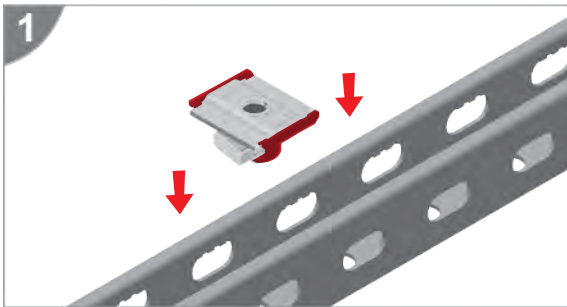
## Quick Traverse Nut

Description	Weight (kg/pcs)	Order Code
M8 Quick Traverse Nut	0,084	1004993
M10 Quick Traverse Nut	0,081	1004994
M12 Quick Traverse Nut	0,078	1004995

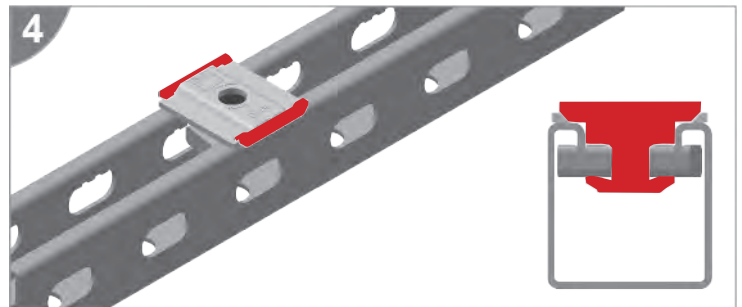
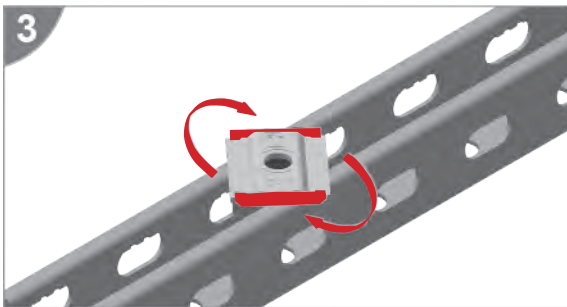


- Speed Traverse Nut can be mounted at any desired point on Binrak.
- Quick Traverse Nut is Zinc coated.

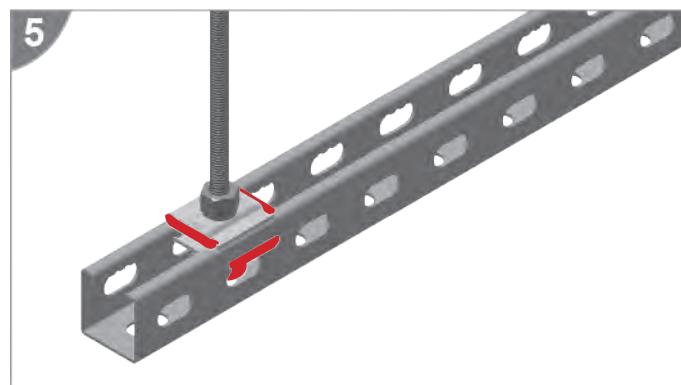
Please use the Quick Nut for fixing the supports and brackets. Please contact with the customer representative for application details, before use the Quick Nut with Binrak Fitting Accessories.



1-2. Place the Quick Nut into Binrak Channel.



3-4. By turning the Quick Nut in the direction of the arrow, select its position on the Binrak Channel.



5. Tighten and fix the Quick Nut at the position selected.

- Please indicate order code in your orders.
- Please contact us for special dimensions.
- Material weights may vary by  $\pm 10\%$

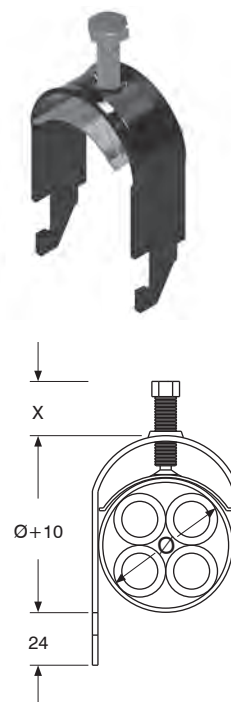
- All dimensions are given as in mm

- EG= Electro-Galvanized
- SS= Stainless Steel
- PG= Pre-Galvanized
- HDG= Hot Dip Galvanized

# E-LINE A

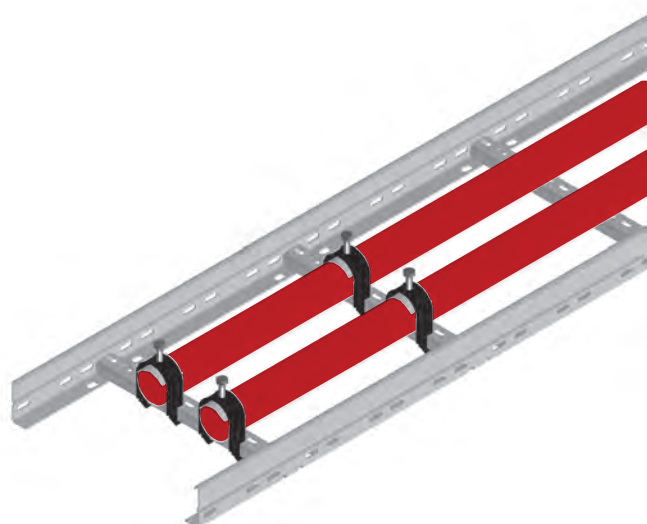
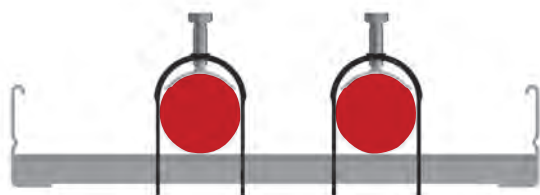
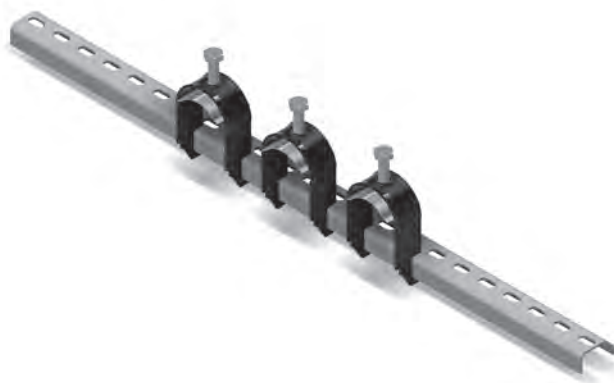
## Cable Clamp

Description	Ø (mm)	X (mm)	Weight (kg/pcs)	Order Code
1-12 Cable Clamp	12	20	0,055	1004215
1-16 Cable Clamp	16	20	0,059	1004309
1-20 Cable Clamp	20	20	0,065	1004214
1-24 Cable Clamp	24	20	0,072	1004213
1-28 Cable Clamp	28	20	0,076	1004307
1-32 Cable Clamp	32	20	0,083	1004212
1-36 Cable Clamp	36	20	0,088	1004211
1-40 Cable Clamp	40	30	0,091	1004305
1-44 Cable Clamp	44	30	0,098	1004210
1-48 Cable Clamp	48	30	0,103	1004209
1-52 Cable Clamp	52	30	0,108	1004303
1-56 Cable Clamp	56	30	0,113	1004208
1-60 Cable Clamp	60	30	0,121	1004207
1-64 Cable Clamp	64	30	0,127	1004206
1-70 Cable Clamp	70	30	0,136	1004205
1-76 Cable Clamp	76	30	0,145	1004204
1-82 Cable Clamp	82	30	0,153	1004203
1-88 Cable Clamp	88	30	0,163	1004202
1-94 Cable Clamp	94	30	0,173	1004201
1-100 Cable Clamp	100	30	0,179	1004200



- Suitable for KME-KMP Type stairs.

## KME Ladder Step



- Please indicate order code in your orders.
- Please contact us for special dimensions.
- Material weights may vary by  $\pm 10\%$

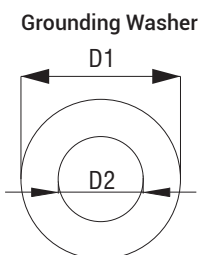
- All dimensions are given as in mm

- EG= Electro-Galvanized
- PG= Pre-Galvanized
- SS= Stainless Steel
- HDG= Hot Dip Galvanized

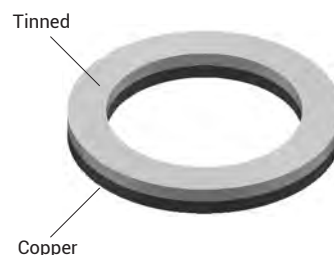
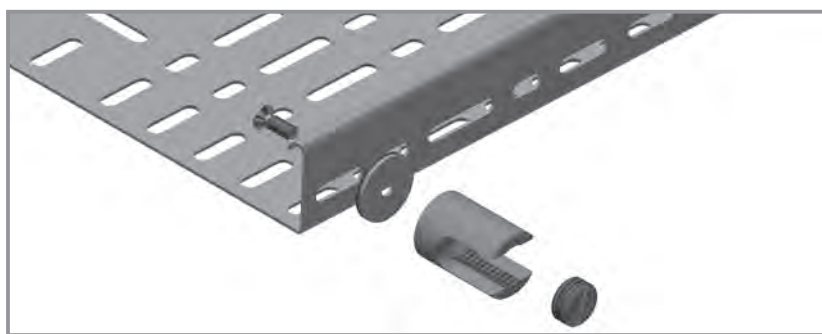
# E-LINE A

## Cable Clamp

Description	D1 (mm)	D2 (mm)	Order Code
Grounding Washer M6	12	6,4	1015408
Grounding Washer M8	16	8,4	1015409
Grounding Washer M10	20	10,5	1015410
Grounding Washer M12	24	13	1015411



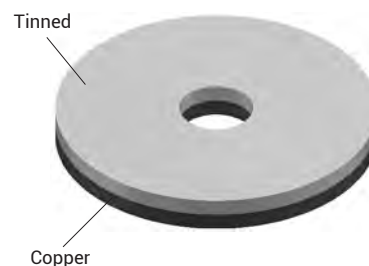
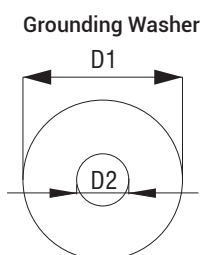
- "Copper and brass should be used in case of contact between materials and galvanized surfaces."
- "Tin-coated faces of bimetal materials should be in contact with galvanized surfaces. Wrong connection will cause galvanic corrosion."



- M6x12 Star headed bolt using with nut.

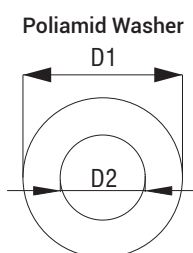
## Grounding Washer

Description	D1 (mm)	D2 (mm)	Order Code
Grounding Washer 10-35 (mm) <sup>2</sup>	18	6,4	1015431
Grounding Washer 35-70 (mm) <sup>2</sup>	21	6,4	1015432
Grounding Washer 70-150 (mm) <sup>2</sup>	28	6,4	1015433
Grounding Washer 150-185 (mm) <sup>2</sup>	31	6,4	1015434



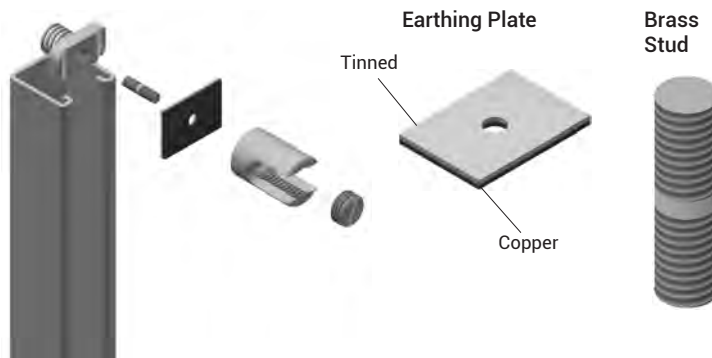
## Poliamid Washeru

Description	D1 (mm)	D2 (mm)	Order Code
Poliamid Washer M6	12	6,4	1015412
Poliamid Washer M8	16	8,4	1015413
Poliamid Washer M10	20	10,5	1015414
Poliamid Washer M12	24	13	1015415



## Earthing Plate

Description	A (mm)	B (mm)	Order Code
Earthing Plate	30	42	1015435



## Brass Stud

Description	Order Code
Brass Stud M6x22	1015430

- Please indicate order code in your orders.
- Please contact us for special dimensions.
- Material weights may vary by ± 10%

• All dimensions are given as in mm

- EG= Electro-Galvanized
- SS= Stainless Steel
- PG= Pre-Galvanized
- HDG= Hot Dip Galvanized

# E-LINE A

## Earthing Components

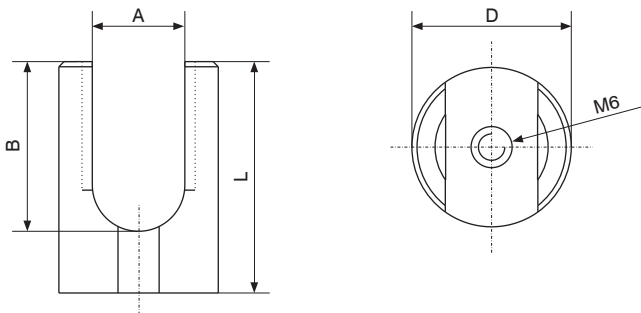


Description	(mm) <sup>2</sup>	A (mm)	B (mm)	D (mm)	L (mm)	Order Code
Brass Joint and Earthing Connector 1	10-35	8	14	18	22	1004225
Brass Joint and Earthing Connector 2	35-70	10	17	21	25	1004226
Brass Joint and Earthing Connector 3	70-150	16	29	28	39	1004227
Brass Joint and Earthing Connector 4	150-185	18	33	31	45	1004228

Brass Joint and Earthing Connector (Cylindrical)



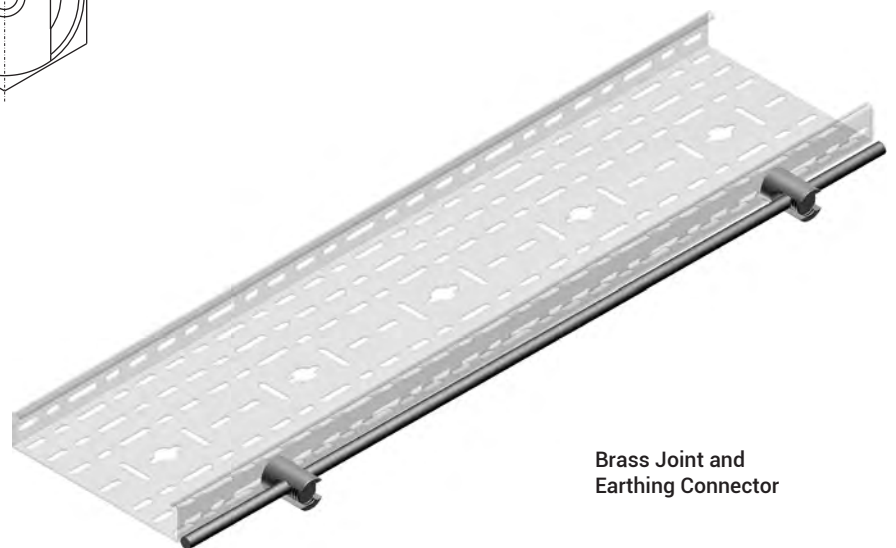
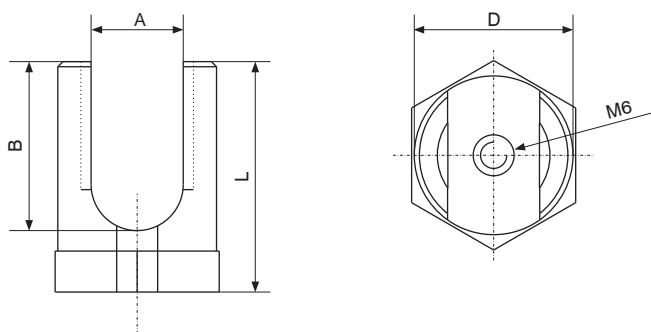
- M6 bolt set must be purchased for the cable tray installation.



## Earthing Components

Description	(mm) <sup>2</sup>	A (mm)	B (mm)	D (mm)	L (mm)	Order Code
Brass Joint and Earthing Connector 5	10-35	8	14	18	22	1004229
Brass Joint and Earthing Connector 6	35-70	10	17	21	25	1004230
Brass Joint and Earthing Connector 7	70-150	16	29	28	39	1004231
Brass Joint and Earthing Connector 8	150-185	18	33	31	45	1004232

Brass Joint and Earthing Connector (Hexagonal)



Brass Joint and Earthing Connector

- Please indicate order code in your orders.
- Please contact us for special dimensions.
- Material weights may vary by ± 10%

• All dimensions are given as in mm

- EG= Electro-Galvanized
- PG= Pre-Galvanized
- SS= Stainless Steel
- HDG= Hot Dip Galvanized

# E-LINE A

## Grounding Conductor

Description	Conductor Cross Section	Length (L)	Order Code
Grounding Conductor-10-370	10 mm <sup>2</sup>	370 mm	1022651
Grounding Conductor-16-370	16 mm <sup>2</sup>	370 mm	1022652
Grounding Conductor-25-370	25 mm <sup>2</sup>	370 mm	1022653
Grounding Conductor-35-370	35 mm <sup>2</sup>	370 mm	1022654



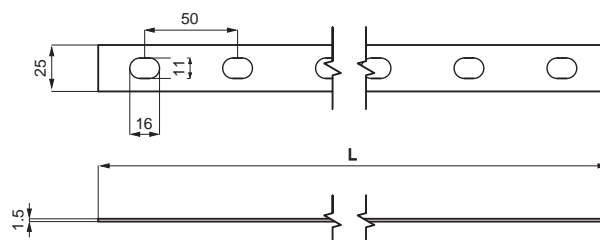
Description	Conductor Cross Section	Length (L)	Order Code
Grounding Conductor-6-370	6 mm <sup>2</sup>	370 mm	1054068
Grounding Conductor-8-370	8 mm <sup>2</sup>	370 mm	1054069



- For assembly, 2 sets of M6x12 bolts must be ordered separately.

## Earthing Plate

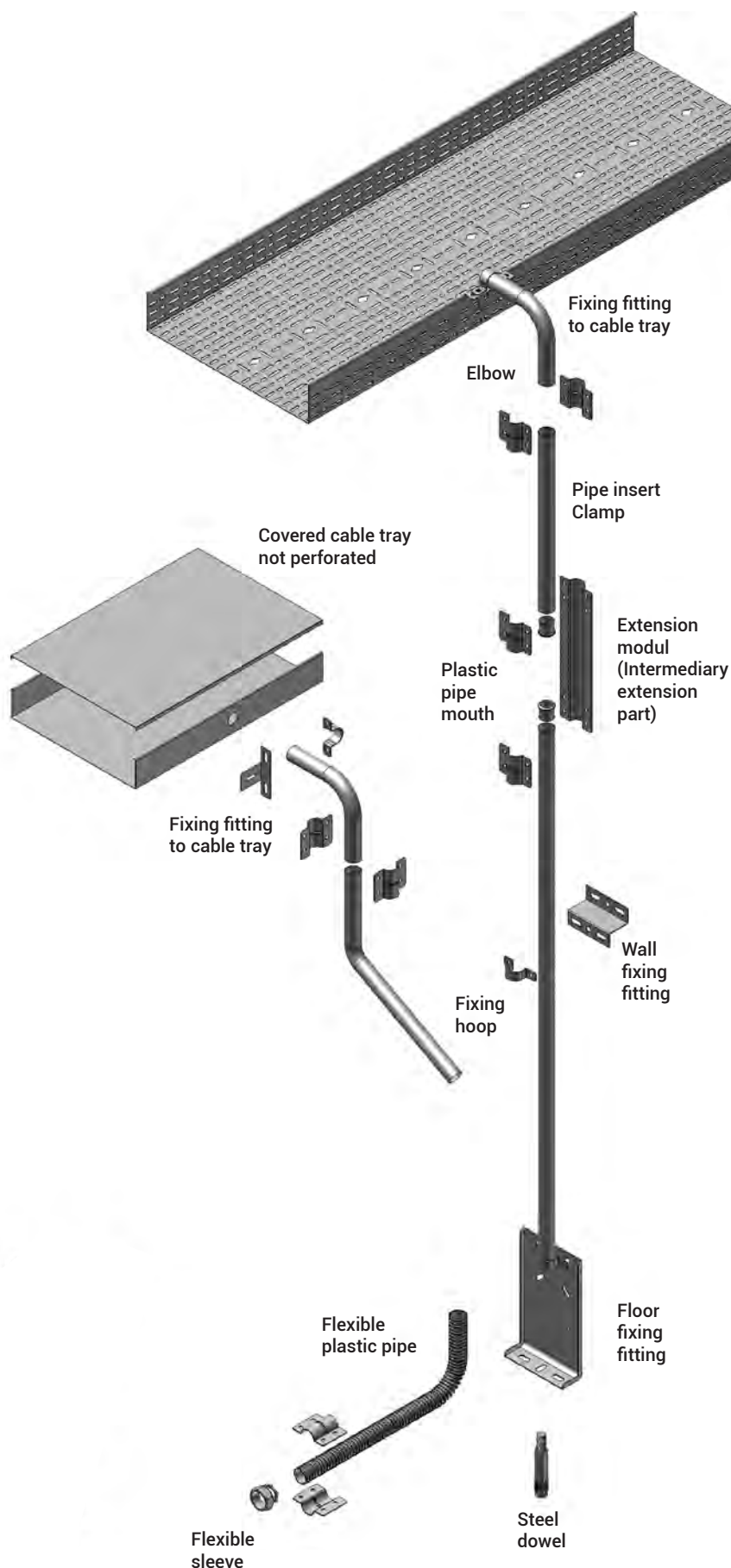
Description	Length (L)	Weight (kg/pcs)	Product Code
Pear Clamp (Hot Dip Galvanized)	3000	0,86	3188125
Pear Clamp (Pregalvanized)	3000	0,777	3188126



- Please indicate order code in your orders.
- Please contact us for special dimensions.
- Material weights may vary by ± 10%

• All dimensions are given as in mm

- EG= Electro-Galvanized
- PG= Pre-Galvanized
- SS= Stainless Steel
- HDG= Hot Dip Galvanized



- Please indicate order code in your orders.
- Please contact us for special dimensions.
- Material weights may vary by  $\pm 10\%$

• All dimensions are given as in mm

- EG= Electro-Galvanized
- PG= Pre-Galvanized
- SS= Stainless Steel
- HDG= Hot Dip Galvanized

Description	Weight (kg/pcs)	Order Code	Pack (pcs)
(Ø 25) Elbow 90°	0,130	1004298	-
(Ø 42) Elbow 90°	0,260	1004297	-

Elbow 90°



Description	Weight (kg/pcs)	Order Code	Pack (pcs)
(Ø 25) Angled Elbow 45°	0,145	1004296	-
(Ø 42) Angled Elbow 45°	0,530	1004295	-

Angled Elbow 45°



Description	Weight (kg/pcs)	Order Code	Pack (pcs)
(Ø 25) Pipe Fixing Crochet	0,017	3008322	50
(Ø 42) Pipe Fixing Crochet	0,026	3008321	-

Pipe Fixing Crochet



Description	Weight (kg/pcs)	Order Code	Pack (pcs)
(Ø 25) Pipe Joint Clamp	0,100	3008320	20
(Ø 42) Pipe Joint Clamp	0,150	3008319	20

Pipe Joint Clamp



Description	Weight (kg/pcs)	Order Code	Pack (pcs)
(Ø 25) Plastic Pipe Mouth	0,130	1004294	-
(Ø 42) Plastic Pipe Mouth	0,260	1004293	-

Plastic Pipe Mouth



Description	Weight (kg/pcs)	Order Code	Pack (pcs)
(Ø 25) Inter Outlet Component	0,204	3008318	-
(Ø 42) Inter Outlet Component	0,401	3008317	10

Inter Outlet Component



- Please indicate order code in your orders.
- Please contact us for special dimensions.
- Material weights may vary by ± 10%

- All dimensions are given as in mm

- EG= Electro-Galvanized
- SS= Stainless Steel
- PG= Pre-Galvanized
- HDG= Hot Dip Galvanized

Description	Weight (kg/pcs)	Order Code	Pack (pcs)
Fitting Component to Floor	0,392	3008316	-
Fitting Component to Wall	0,091	3008323	-

Fitting Component to Wall



Fitting Component to Floor



Description	Weight (kg/pcs)	Order Code	Pack (pcs)
UK Fixing Component to Cable Tray	0,080	3008315	-

UK Fixing Component to Cable Tray



Description	Weight (kg/pcs)	Order Code	Pack (pcs)
(Ø 25) Flexible Sleeve	0,070	1004289	-
(Ø 42) Flexible Sleeve	0,155	1004288	-

Flexible Sleeve



Description	Weight (kg/m)	Order Code
(Ø 25) Pipe	0,593	1004300
(Ø 42) Pipe	1,103	1004299

Pipe



Description	Weight (kg/pcs)	Order Code
(Ø 25) Flexible Pipe	0,054	1004292
(Ø 42) Flexible Pipe	0,072	1004291

Flexible Pipe



- Please indicate order code in your orders.
- Please contact us for special dimensions.
- Material weights may vary by ± 10%

- All dimensions are given as in mm

- EG= Electro-Galvanized
- SS= Stainless Steel
- PG= Pre-Galvanized
- HDG= Hot Dip Galvanized

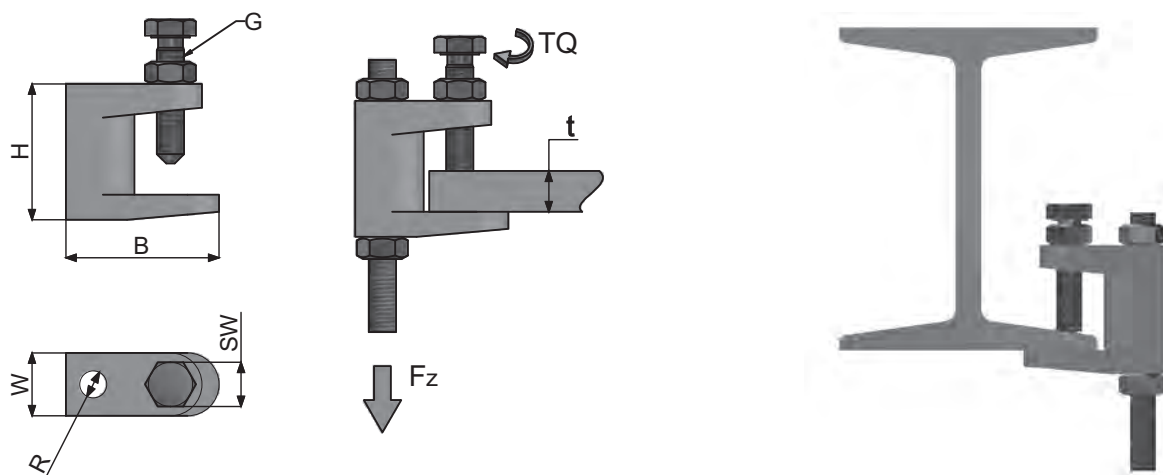
# E-LINE A

## Beam Clamp

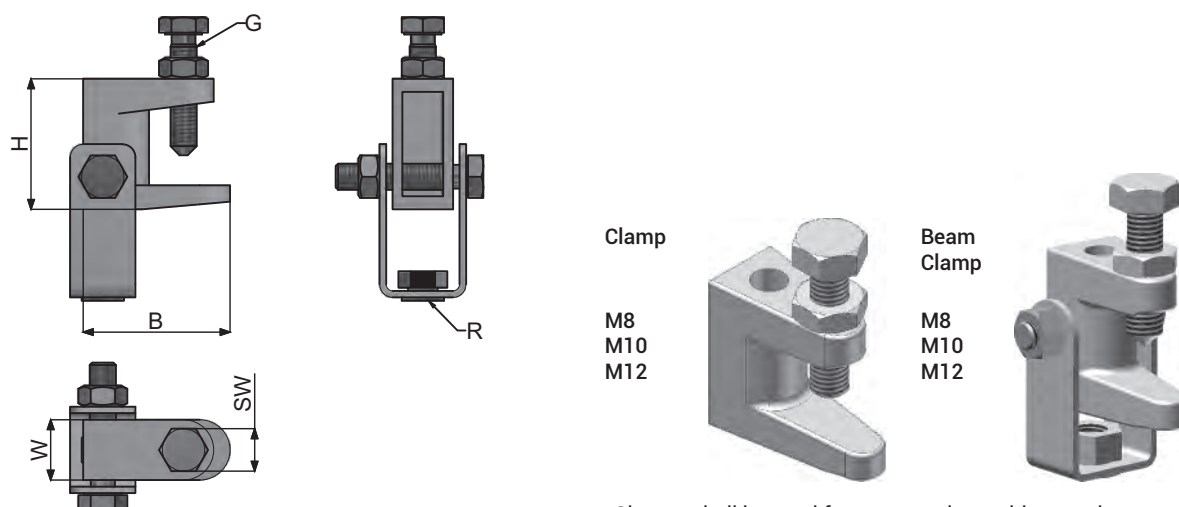


Description	Technical Information						Dimensions			Weight (kg/pcs)	Order Code
	Tightening Bolt G	Support Rod R	Max. Wall Thickness	Max. Safe Load Fz	Tightening Wrench	Spring Load	B	H	W		
M8 Clamp	M8	M8	12 mm	120	13 mm	7 Nm	45mm	40mm	18,5mm	0,170	5000004
M10 Clamp	M10	M10	15 mm	240	17 mm	7 Nm	48mm	45mm	21mm	0,180	5000005
M8 Beam Clamp	M8	M8	12 mm	120	13 mm	7 Nm	45mm	40mm	18,5mm	0,220	5000001
M10 Beam Clamp	M10	M10	15 mm	240	17 mm	7 Nm	48mm	45mm	21mm	0,230	5000002
M12 Beam Clamp	M10	M12	15 mm	240	17 mm	7 Nm	48mm	45mm	21mm	0,340	5000003

### Clamp



### Beam Clamp



\*Clamps shall be used for constructions with a maximum wall thickness of 15 mm.  
 \*Recommended torque value for clamps is 7 Nm.

- Please indicate order code in your orders.
- Please contact us for special dimensions.
- Material weights may vary by  $\pm 10\%$

• All dimensions are given as in mm

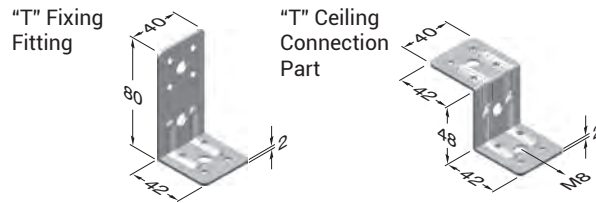
- EG= Electro-Galvanized
- PG= Pre-Galvanized
- SS= Stainless Steel
- HDG= Hot Dip Galvanized

# E-LINE A

## Connection Accessories



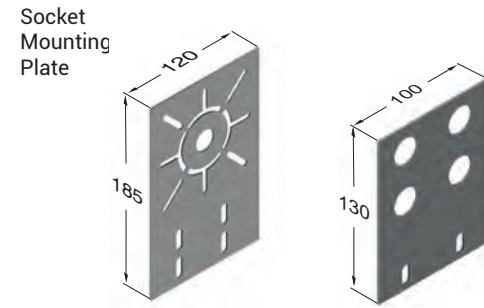
Description	Weight (kg/pcs)	PG Code
"T" Fixing Fitting	0,074	3008265
"T" Ceiling Connection Part	0,076	3008324



Description	Weight (kg/pcs)	Order Code
Cotter Pin	0,025	1004310



Description	Weight (kg/pcs)	PG Code
Socket Mounting Plate (Pre)	0,245	3006652
Socket Mounting Plate	0,135	3295914



Description	Weight (kg/pcs)	Order Code
EAE Joint Bolt Set M6X12 (Lacquered)	0,009	1004314
Rounded Joint Bolt Set M6X12 (EG)	0,009	1072334
Binrak Joint Bolt M8x15	0,010	1004285
Edge Protection Strip-One Side	0,070	1001414
Edge Protection Strip-Double Side	0,140	1001454



Description	Weight (kg/pcs)	Order Code
EAE Zinc Spray	0,380	1000172

EAE Zinc Spray  
400ml



Description	Weight (kg/pcs)	Order Code
Zinga Paint (1kg)	1,000	1015740

Zinga Paint



EAE recommends to apply ZINGA paint to the cut areas of the products. Please see INFO section for the product's technical specifications and usage.

BRA 8 Joint Bolt Set;  
Contains 1 unit M6x12 round head bolt + 1 unit M6 flanged nut.  
Coated with standard lac..

- Please indicate order code in your orders.
- Please contact us for special dimensions.
- Material weights may vary by  $\pm 10\%$

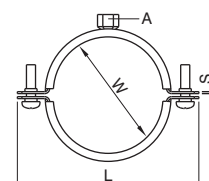
• All dimensions are given as in mm

- EG= Electro-Galvanized
- SS= Stainless Steel
- PG= Pre-Galvanized
- HDG= Hot Dip Galvanized

# E-LINE A

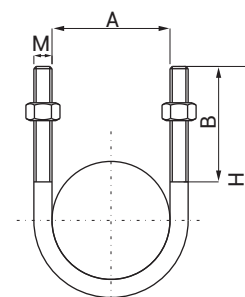
## Connection Accessories

Description	S x B	W	L	A	Weight (kg/pcs)	Order Code
Pipe Clamp 3/8"	1,5x20	16-20	58,5	M8	0,057	1003620
Pipe Clamp 1/2"	1,5x20	20-24	62,5	M8	0,061	1003621
Pipe Clamp 3/4"	1,5x20	25-28	68,5	M8	0,067	1003622
Pipe Clamp 1"	1,5x20	32-35	76	M8	0,075	1003623
Pipe Clamp 1 1/4"	1,5x20	39-46	91,5	M8	0,092	1003624
Pipe Clamp 1 1/2"	1,5x20	48-53	99	M8	0,101	1003625
Pipe Clamp 2"	1,5x20	59-66	112	M8	0,117	1003626
Pipe Clamp 2 1/2"	2x25	74-80	134	M10	0,210	1003627
Pipe Clamp 3"	2x25	87-94	146,5	M10	0,228	1003628
Pipe Clamp 4"	2,5x25	110-116	173	M10	0,310	1003629
Pipe Clamp 5"	2,5x25	135-143	199	M10	0,358	1003630
Pipe Clamp 6"	2,5x25	162-170	227	M10	0,398	1003631
Pipe Clamp 8"	2,5x25	207-219	280,7	M10	0,523	1003632



## U Bolt

Description	A	H	B	M	Weight (kg/pcs)	Order Code
U Bolt 1/2"	24	50	30	M6	0,049	1003652
U Bolt 3/4"	30	60	30	M6	0,052	1003653
U Bolt 1"	36	70	30	M8	0,054	1003654
U Bolt 1 1/4"	46	80	40	M8	0,063	1003655
U Bolt 1 1/2"	52	90	50	M8	0,068	1003656
U Bolt 2"	64	100	50	M10	0,136	1003657
U Bolt 2 1/2"	78	120	50	M10	0,155	1003658
U Bolt 3"	94	140	60	M12	0,266	1003659
U Bolt 4"	118	160	65	M12	0,332	1003661
U Bolt 5"	146	200	65	M12	0,400	1003662
U Bolt 6"	172	220	90	M16	0,756	1003660
U Bolt 8"	224	270	90	M16	1,500	1004128



- Please indicate order code in your orders.
- Please contact us for special dimensions.
- Material weights may vary by  $\pm 10\%$

- All dimensions are given as in mm

- EG= Electro-Galvanized
- PG= Pre-Galvanized
- SS= Stainless Steel
- HDG= Hot Dip Galvanized

# E-LINE A

## EMT Pre-Galvanized Steel Pipe and Accessories

EMT Threadless / Seamless Galvanized Steel Conduit Pre-Galvanized (TS EN 10346 - TS EN 10143)



Description	EMT Measure	Outer Diameter	Joint Thickness (mm)	Weight (kg/m)	Order Code
EMT 1/2"	1/2"	17,93	1,07	0,44	1034678
EMT 3/4"	3/4"	23,42	1,25	0,68	1034679
EMT 1"	1"	29,54	1,45	1,00	1034680
EMT 1 1/4"	1 1/4"	38,35	1,65	1,49	1034681
EMT 1 1/2"	1 1/2"	44,20	1,65	1,73	1034682
EMT 2"	2"	55,80	1,65	2,20	1034683
EMT 2 1/2"	2 1/2"	73,03	1,83	3,07	1034684
EMT 3"	3"	88,90	1,83	3,87	1034685
EMT 4"	4"	114,30	2,11	5,81	1034686



L= 3000mm

- Certified to ANSI C80.3, GOST-R, EAC CE standards.
- Deburred (burr-free) electrical installation conduit.
- Standard manufacturing length is 3.00 m.
- Pre-galvanized coating and bendable/flexible properties.
- The stated physical data are within  $\pm 5\%$  tolerance.
- Especially suitable for internal use in social facilities, business centers, workshops and high-rise buildings.

### 90° Threadless Elbow / PG Pre-Galvanized( TS EN 10346 - TS EN 10143)

Description	EMT Measure	Pack Unit (pcs)	Paket Weight (kg)	Order Code
EMT 1/2" 90° Elbow	1/2"	200	20,00	1034843
EMT 3/4" 90° Elbow	3/4"	100	12,00	1034844
EMT 1" 90° Elbow	1"	50	16,00	1034845
EMT 1 1/4" 90° Elbow	1 1/4"	25	14,00	1034846
EMT 1 1/2" 90° Elbow	1 1/2"	20	16,00	1034847
EMT 2" 90° Elbow	2"	15	18,00	1034848
EMT 2 1/2" 90° Elbow	2 1/2"	10	20,00	1034849
EMT 3" 90° Elbow	3"	9	24,50	1034850
EMT 4" 90° Elbow	4"	9	43,00	1034851



- Certified to GOST-R, EAC and CE standards.
- Pre-galvanized coated.
- UL-certified hot-dip galvanized types are also available.
- Used for 90° elbow of EMT conduits

### 45° Threadless Elbow / PG Pre-Galvanized( TS EN 10346 - TS EN 10143)

Description	EMT Measure	Pack Unit (pcs)	Paket Weight (kg)	Order Code
EMT 1/2" 45° Elbow	1/2"	100	10,60	1034834
EMT 3/4" 45° Elbow	3/4"	100	17,50	1034835
EMT 1" 45° Elbow	1"	50	17,50	1034836
EMT 1 1/4" 45° Elbow	1 1/4"	40	28,00	1034837
EMT 1 1/2" 45° Elbow	1 1/2"	40	32,50	1034838
EMT 2" 45° Elbow	2"	15	13,50	1034839
EMT 2 1/2" 45° Elbow	2 1/2"	10	20,00	1034840
EMT 3" 45° Elbow	3"	9	24,50	1034841
EMT 4" 45° Elbow	4"	9	43,00	1034842



- Certified to GOST-R, EAC and CE standards.
- Pre-galvanized coated.
- UL-certified hot-dip galvanized types are also available.
- Used for 45° elbow of EMT conduits

- Please indicate order code in your orders.
- Please contact us for special dimensions.
- Material weights may vary by  $\pm 10\%$

• All dimensions are given as in mm

- EG= Electro-Galvanized
- PG= Pre-Galvanized
- SS= Stainless Steel
- HDG= Hot Dip Galvanized

# E-LINE A

## EMT Pre-Galvanized Steel Pipe and Accessories

### Hanger Clip Electrogalvanized (TS 149)



Description	EMT Measure	Pack Unit (pcs)	Pack Weight (kg)	Order Code
EMT 1/2" Hanger Clip	1/2"	400	12,00	1034786
EMT 3/4" Hanger Clip	3/4"	300	10,00	1034787
EMT 1" Hanger Clip	1"	200	9,00	1034788
EMT1 1/4" Hanger Clip	1 1/4"	150	8,00	1034789
EMT 1 1/2" Hanger Clip	1 1/2"	100	7,00	1034790
EMT 2" Hanger Clip	2"	75	6,00	1034791
EMT 2 1/2" Hanger Clip	2 1/2"	50	6,00	1034792
EMT 3" Hanger Clip	3"	50	6,30	1034793
EMT 4" Hanger Clip	4"	25	4,00	1034794



- UL, GOST-R, EAC, and CE certified.
- Made of galvanized steel.
- Electro-galvanized coated.
- Used for fixing EMT conduits to flat surfaces.

### Strut Hanger Clip Electro-Galvanized (TS 149)

Description	EMT Measure	Pack Unit (pcs)	Pack Weight (kg)	Order Code
EMT 1/2" Strut hanger clip	1/2"	300	15,00	1034795
EMT 3/4" Strut hanger clip	3/4"	300	20,00	1034796
EMT 1" Strut hanger clip	1"	250	18,00	1034797
EMT1 1/4" Strut hanger clip	1 1/4"	200	16,30	1034798
EMT 1 1/2" Strut hanger clip	1 1/2"	150	19,70	1034799
EMT 2" Strut hanger clip	2"	150	22,50	1034800
EMT 2 1/2" Strut hanger clip	2 1/2"	100	17,00	1034801
EMT 3" Strut hanger clip	3"	100	20,00	1034802
EMT 4" Strut hanger clip	4"	50	14,80	1034803



- UL, GOST-R, EAC, and CE certified.
- Made of galvanized steel.
- Electro-galvanized coated.
- Hot-dip galvanized versions can also be manufactured.
- Used for fixing EMT conduits to C and G profiles

### Fastening Clip, Two Hole Electro-Galvanized (TS 149)

Description	EMT Measure	Pack Unit (pcs)	Pack Weight (kg)	Order Code
EMT 1/2" Fastening Clip, Two Hole	1/2"	100	1,05	1034768
EMT 3/4" Fastening Clip, Two Hole	3/4"	100	1,30	1034769
EMT 1" Fastening Clip, Two Hole	1"	50	0,85	1034770
EMT1 1/4" Fastening Clip, Two Hole	1 1/4"	50	1,05	1034771
EMT 1 1/2" Fastening Clip, Two Hole	1 1/2"	25	1,09	1034772
EMT 2" Fastening Clip, Two Hole	2"	20	1,26	1034773
EMT 2 1/2" Fastening Clip, Two Hole	2 1/2"	100	10,00	1034774
EMT 3" Fastening Clip, Two Hole	3"	100	13,00	1034775
EMT 4" Fastening Clip, Two Hole	4"	50	9,00	1034776



- UL, GOST-R, EAC, and CE certified.
- Made of galvanized steel.
- Electro-galvanized coated.
- Used for fixing EMT conduits to flat surfaces.

### Fastening Clip, Single Hole Electro-Galvanized (TS 149)

Description	EMT Measure	Pack Unit (pcs)	Pack Weight (kg)	Order Code
EMT 1/2" Fastening Clip, Single Hole	1/2"	200	1,60	1034777
EMT 3/4" Fastening Clip, Single Hole	3/4"	200	2,00	1034778
EMT 1" Fastening Clip, Single Hole	1"	100	1,40	1034779
EMT1 1/4" Fastening Clip, Single Hole	1 1/4"	50	1,20	1034780
EMT 1 1/2" Fastening Clip, Single Hole	1 1/2"	50	1,70	1034781
EMT 2" Fastening Clip, Single Hole	2"	25	1,10	1034782
EMT 2 1/2" Fastening Clip, Single Hole	2 1/2"	100	15,00	1034783
EMT 3" Fastening Clip, Single Hole	3"	100	16,50	1034784
EMT 4" Fastening Clip, Single Hole	4"	50	10,00	1034785



- UL, GOST-R, EAC, and CE certified.
- Made of galvanized steel.
- Electro-galvanized coated.
- Used for fastening EMT conduits to flat surfaces.

- Please indicate order code in your orders.
- Please contact us for special dimensions.
- Material weights may vary by ± 10%

- All dimensions are given as in mm

- EG= Electro-Galvanized
- PG= Pre-Galvanized
- SS= Stainless Steel
- HDG= Hot Dip Galvanized

# E-LINE A

## EMT Pre-Galvanized Steel Pipe and Accessories

### Coupling Socket, Bolted Type / ZAMAK



Description	EMT Measure	Pack Unit (pcs)	Pack Weight (kg)	Order Code
EMT 1/2" Coupling Socket, Bolted Type	1/2"	100	2,20	1034732
EMT 3/4" Coupling Socket, Bolted Type	3/4"	100	3,20	1034733
EMT 1" Coupling Socket, Bolted Type	1"	50	2,60	1034734
EMT 1 1/4" Coupling Socket, Bolted Type	1 1/4"	25	2,20	1034735
EMT 1 1/2" Coupling Socket, Bolted Type	1 1/2"	20	2,20	1034736
EMT 2" Coupling Socket, Bolted Type	2"	10	1,60	1034737
EMT 2 1/2" Coupling Socket, Bolted Type	2 1/2"	40	11,00	1034738
EMT 3" Coupling Socket, Bolted Type	3"	40	14,00	1034739
EMT 4" Coupling Socket, Bolted Type	4"	20	11,00	1034740



- UL, GOST-R, EAC, and CE certified.
- Made of Zamak (zinc die-cast).
- Used for threaded connections of EMT conduits.

### Coupling Socket, Tightening Type / ZAMAK

Description	EMT Measure	Pack Unit (pcs)	Pack Weight (kg)	Order Code
EMT 1/2" Coupling Socket, Tightening Type	1/2"	100	3,80	1034741
EMT 3/4" Coupling Socket, Tightening Type	3/4"	50	2,80	1034742
EMT 1" Coupling Socket, Tightening Type	1"	50	4,20	1034743
EMT 1 1/4" Coupling Socket, Tightening Type	1 1/4"	25	3,40	1034744
EMT 1 1/2" Coupling Socket, Tightening Type	1 1/2"	20	3,60	1034745
EMT 2" Coupling Socket, Tightening Type	2"	10	2,40	1034746
EMT 2 1/2" Coupling Socket, Tightening Type	2 1/2"	40	14,70	1034747
EMT 3" Coupling Socket, Tightening Type	3"	40	18,80	1034748
EMT 4" Coupling Socket, Tightening Type	4"	20	16,60	1034749



- UL, GOST-R, EAC, and CE certified.
- Made of Zamak (zinc die-cast).
- Used for tight-fit (press-fit) connections of EMT conduits.

### End Socket, Bolted Type / Steel

Description	EMT Measure	Pack Unit (pcs)	Pack Weight (kg)	Order Code
EMT 1/2" End Socket, Bolted Type	1/2"	100	2,00	1034696
EMT 3/4" End Socket, Bolted Type	3/4"	100	3,20	1034697
EMT 1" End Socket, Bolted Type	1"	50	2,80	1034698
EMT 1 1/4" End Socket, Bolted Type	1 1/4"	25	2,20	1034699
EMT 1 1/2" End Socket, Bolted Type	1 1/2"	20	2,20	1034700
EMT 2" End Socket, Bolted Type	2"	10	1,60	1034701
EMT 2 1/2" End Socket, Bolted Type	2 1/2"	40	11,00	1034702
EMT 3" End Socket, Bolted Type	3"	40	16,00	1034703
EMT 4" End Socket, Bolted Type	4"	20	11,00	1034704



- UL, GOST-R, EAC, and CE certified.
- Made of Zamak (zinc die-cast).
- Used for fixing EMT conduits to boxes, junction boxes, and trays.

### End Socket, Tightening Type / ZAMAK

Description	EMT Measure	Pack Unit (pcs)	Pack Weight (kg)	Order Code
EMT 1/2" End Socket, Tightening Type	1/2"	100	3,00	1034705
EMT 3/4" End Socket, Tightening Type	3/4"	50	2,40	1034706
EMT 1" End Socket, Tightening Type	1"	50	3,80	1034707
EMT 1 1/4" End Socket, Tightening Type	1 1/4"	25	2,80	1034708
EMT 1 1/2" End Socket, Tightening Type	1 1/2"	20	3,40	1034709
EMT 2" End Socket, Tightening Type	2"	10	2,60	1034710
EMT 2 1/2" End Socket, Tightening Type	2 1/2"	40	13,00	1034711
EMT 3" End Socket, Tightening Type	3"	40	18,00	1034712
EMT 4" End Socket, Tightening Type	4"	20	15,00	1034713



- UL, GOST-R, EAC, and CE certified.
- Made of Zamak (zinc die-cast).
- Used for fixing EMT conduits to boxes, junction boxes, and trays.

- Please indicate order code in your orders.
- Please contact us for special dimensions.
- Material weights may vary by ± 10%

• All dimensions are given as in mm

- EG= Electro-Galvanized
- PG= Pre-Galvanized
- SS= Stainless Steel
- HDG= Hot Dip Galvanized

# E-LINE A

## EMT Pre-Galvanized Steel Pipe and Accessories

### Conduit To Flexible Connector / Bolted, Tightening / ZAMAK



Description	EMT Measure	Outer Diameter (mm)	EMT Suitable Spiral Measure	Pack Unit (pcs)	Order Code
EMT 1/2" Conduit To Flexible Connector / Bolted, Tightening	1/2"	17,93	MN... -16	50	1034804
EMT 3/4" Conduit To Flexible Connector / Bolted, Tightening	3/4"	23,42	MN... -21	50	1034805
EMT 1" Conduit To Flexible Connector / Bolted, Tightening	1"	29,54	MN... -26	25	1034806
EMT 1 1/4" Conduit To Flexible Connector / Bolted, Tightening	1 1/4"	38,35	MN... -35	20	1034807
EMT 1 1/2" Conduit To Flexible Connector / Bolted, Tightening	1 1/2"	44,20	MN... -40	10	1034808
EMT 2" Conduit To Flexible Connector / Bolted, Tightening	2"	55,80	MN... -52	10	1034809
EMT 2 1/2" Conduit To Flexible Connector / Bolted, Tightening	2 1/2"	73,03	MN... -63	25	1034810
EMT 3" Conduit To Flexible Connector / Bolted, Tightening	3"	88,90	MN... -78	20	1034811
EMT 4" Conduit To Flexible Connector / Bolted, Tightening	4"	114,30	MN... -102	10	1034812



- GOST-R, EAC, and CE certified.
- Made of Zamak (zinc die-cast).
- Used for threaded and clamped connections between EMT and steel spiral conduits.

### Conduit To Flexible Connector/ Tightening / ZAMAK

Description	EMT Measure	EMT Suitable Spiral Measure	Pack Unit (pcs)	Order Code
EMT 1/2" Conduit To Flexible Connector / Bolted, Tightening	1/2"	MN... -16	50	1034813
EMT 3/4" Conduit To Flexible Connector / Bolted, Tightening	3/4"	MN... -21	50	1034814
EMT 1" Conduit To Flexible Connector / Bolted, Tightening	1"	MN... -26	25	1034815
EMT 1 1/4" Conduit To Flexible Connector / Bolted, Tightening	1 1/4"	MN... -35	20	1034816
EMT 1 1/2" Conduit To Flexible Connector / Bolted, Tightening	1 1/2"	MN... -40	10	1034817
EMT 2" Conduit To Flexible Connector / Bolted, Tightening	2"	MN... -52	10	1034818
EMT 2 1/2" Conduit To Flexible Connector / Bolted, Tightening	2 1/2"	MN... -63	25	1034819
EMT 3" Conduit To Flexible Connector / Bolted, Tightening	3"	MN... -78	20	1034820
EMT 4" Conduit To Flexible Connector / Bolted, Tightening	4"	MN... -102	10	1034821



- GOST-R, EAC, and CE certified.
- Made of Zamak (zinc die-cast).
- Used for threaded-and-clamp connections between EMT and steel spiral conduits.

- Please indicate order code in your orders.
- Please contact us for special dimensions.
- Material weights may vary by ± 10%

• All dimensions are given as in mm

- EG= Electro-Galvanized
- SS= Stainless Steel
- PG= Pre-Galvanized
- HDG= Hot Dip Galvanized

# E-LINE A

## EMT Hot-Dip Galvanized Steel Conduits and Accessories

### EMT Seamless Galvanized Steel Conduit Hot Dip Galvanized (TS EN ISO 1461)



Description	EMT Measure	Outer Diameter	Joint Thickness (mm)	Weight (kg/m)	Order Code
EMT 1/2"	1/2"	17,93	1,07	0,45	1034687
EMT 3/4"	3/4"	23,42	1,24	0,69	1034688
EMT 1"	1"	29,54	1,45	1,00	1034689
EMT 1 1/4"	1 1/4"	38,35	1,65	1,50	1034690
EMT 1 1/2"	1 1/2"	44,20	1,65	1,72	1034691
EMT 2"	2"	55,80	1,65	2,20	1034692
EMT 2 1/2"	2 1/2"	73,03	1,83	3,21	1034693
EMT 3"	3"	88,90	1,83	3,91	1034694
EMT 4"	4"	114,30	2,11	5,85	1034695



- UL 797, ANSI C80.3, GOST-R, EAC, and CE certified.
- Burr-free electrical installation conduits.
- Standard manufacturing length is 3.05 m.
- Hot-dip galvanized coating and bendable.
- Specified physical data are within  $\pm 5\%$  tolerance.
- Suitable for use in damp and outdoor environments, especially in commercial-industrial facilities, ships, etc.

### EMT-Steel Spiral Conduit Connection Adapter / Threaded-Clamp Steel

Description	EMT Measure	EMT Suitable Spiral Measure	Pack Weight (kg)	Order Code
EMT 1/2" Conduit To Flexible Connector / Bolted, Tightening	1/2"	MN... -16	100	1034825
EMT 3/4" Conduit To Flexible Connector / Bolted, Tightening	3/4"	MN... -21	50	1034826
EMT 1" Conduit To Flexible Connector / Bolted, Tightening	1"	MN... -26	25	1034827
EMT 1 1/4" Conduit To Flexible Connector / Bolted, Tightening	1 1/4"	MN... -35	20	1034828
EMT 1 1/2" Conduit To Flexible Connector / Bolted, Tightening	1 1/2"	MN... -40	10	1034829
EMT 2" Conduit To Flexible Connector / Bolted, Tightening	2"	MN... -52	10	1034830
EMT 2 1/2" Conduit To Flexible Connector / Bolted, Tightening	2 1/2"	MN... -63	25	1034831
EMT 3" Conduit To Flexible Connector / Bolted, Tightening	3"	MN... -78	20	1034832
EMT 4" Conduit To Flexible Connector / Bolted, Tightening	4"	MN... -102	10	1034833



- GOST-R, EAC, and CE certified.
- Made of steel.
- Used for threaded-and-clamp connections between EMT and steel spiral conduits.

- Please indicate order code in your orders.
- Please contact us for special dimensions.
- Material weights may vary by  $\pm 10\%$

• All dimensions are given as in mm

- EG= Electro-Galvanized
- SS= Stainless Steel
- PG= Pre-Galvanized
- HDG= Hot Dip Galvanized

# E-LINE A

## EMT Hot-Dip Galvanized Steel Conduits and Accessories



### Coupling Socket, Bolted Type Steel Coupling

Description	EMT Measure	Pack Unit (pcs)	Pack Weight (kg)	Order Code
EMT 1/2" Coupling Socket, Bolted Type	1/2"	50	1,87	1034750
EMT 3/4" Coupling Socket, Bolted Type	3/4"	25	1,34	1034751
EMT 1" Coupling Socket, Bolted Type	1"	20	1,66	1034752
EMT 1 1/4" Coupling Socket, Bolted Type	1 1/4"	25	4,20	1034753
EMT 1 1/2" Coupling Socket, Bolted Type	1 1/2"	25	4,70	1034754
EMT 2" Coupling Socket, Bolted Type	2"	20	5,20	1034755
EMT 2 1/2" Coupling Socket, Bolted Type	2 1/2"	12	7,00	1034756
EMT 3" Coupling Socket, Bolted Type	3"	12	9,00	1034757
EMT 4" Coupling Socket, Bolted Type	4"	6	6,40	1034758



- UL, GOST-R, EAC, and CE certified.
- Made of steel.
- Used for threaded connections of EMT conduits.

### Coupling Socket, Tightening Type / Steel

Description	EMT Measure	Pack Unit (pcs)	Pack Weight (kg)	Order Code
EMT 1/2" Coupling Socket, Tightening Type	1/2"	25	1,70	1034759
EMT 3/4" Coupling Socket, Tightening Type	3/4"	25	2,30	1034760
EMT 1" Coupling Socket, Tightening Type	1"	10	1,43	1034761
EMT 1 1/4" Coupling Socket, Tightening Type	1 1/4"	25	4,70	1034762
EMT 1 1/2" Coupling Socket, Tightening Type	1 1/2"	20	5,80	1034763
EMT 2" Coupling Socket, Tightening Type	2"	15	4,70	1034764
EMT 2 1/2" Coupling Socket, Tightening Type	2 1/2"	8	7,00	1034765
EMT 3" Coupling Socket, Tightening Type	3"	4	4,20	1034766
EMT 4" Coupling Socket, Tightening Type	4"	4	6,10	1034767



- UL, GOST-R, EAC, and CE certified.
- Made of steel.
- Used for slip-fit (tight-fit) connections of EMT conduits.

### End Socket, Bolted Type / Steel

Description	EMT Measure	Pack Unit (pcs)	Pack Weight (kg)	Order Code
EMT 1/2" End Socket, Bolted Type	1/2"	50	2,12	1034714
EMT 3/4" End Socket, Bolted Type	3/4"	25	1,49	1034715
EMT 1" End Socket, Bolted Type	1"	20	1,89	1034716
EMT 1 1/4" End Socket, Bolted Type	1 1/4"	25	4,10	1034717
EMT 1 1/2" End Socket, Bolted Type	1 1/2"	25	4,50	1034718
EMT 2" End Socket, Bolted Type	2"	20	4,70	1034719
EMT 2 1/2" End Socket, Bolted Type	2 1/2"	12	4,00	1034720
EMT 3" End Socket, Bolted Type	3"	12	4,80	1034721
EMT 4" End Socket, Bolted Type	4"	6	3,30	1034722



- UL, GOST-R, EAC, and CE certified.
- Made of steel.
- Used for fixing EMT conduits to boxes, junction boxes, and trays.

### End socket, Tightening Type / Steel

Description	EMT Measure	Pack Unit (pcs)	Pack Weight (kg)	Order Code
EMT 1/2" End Socket, Tightening Type	1/2"	25	1,43	1034723
EMT 3/4" End Socket, Tightening Type	3/4"	25	2,05	1034724
EMT 1" End Socket, Tightening Type	1"	10	1,32	1034725
EMT 1 1/4" End Socket, Tightening Type	1 1/4"	25	4,40	1034726
EMT 1 1/2" End Socket, Tightening Type	1 1/2"	20	5,00	1034727
EMT 2" End Socket, Tightening Type	2"	15	4,80	1034728
EMT 2 1/2" End Socket, Tightening Type	2 1/2"	8	6,00	1034729
EMT 3" End Socket, Tightening Type	3"	4	3,60	1034730
EMT 4" End Socket, Tightening Type	4"	4	5,00	1034731



- UL, GOST-R, EAC, and CE certified.
- Made of steel.
- Used for fastening EMT conduits to boxes, junction boxes, and trays.

- Please indicate order code in your orders.
- Please contact us for special dimensions.
- Material weights may vary by  $\pm 10\%$

• All dimensions are given as in mm

- EG= Electro-Galvanized
- PG= Pre-Galvanized
- SS= Stainless Steel
- HDG= Hot Dip Galvanized

# E-LINE A

## IMC Pre-Galvanized Steel Pipe and Accessories

### IMC Pre-Galvanized Steel Conduit Pre-Galvanized( TS EN 10346 - TS EN 10143)



Description	EMT Measure	Outer Diameter	Joint Thickness (mm)	Weight (kg/m)	Order Code
IMC 1/2" PG	1/2"	20,70	1,79	0,79	1070487
IMC 3/4" PG	3/4"	26,10	1,90	1,02	1070488
IMC 1" PG	1"	32,77	2,15	1,51	1070489
IMC 1 1/4" PG	1 1/4"	41,59	2,16	1,95	1070490
IMC 1 1/2" PG	1 1/2"	47,82	2,29	2,47	1070491
IMC 2" PG	2"	59,93	2,41	3,12	1070492
IMC 2 1/2" PG	2 1/2"	72,52	3,81	6,56	1070493
IMC 3" PG	3"	88,29	3,81	8,08	1070494
IMC 4" PG	4"	113,44	3,81	10,42	1070495



- Certified to ANSI C80.6, GOST-R and EAC standards.
- Burr-free electrical installation conduits.
- Manufactured with a pre-galvanized coating and flexible/bendable structure.
- The specified physical data are within a  $\pm 5\%$  tolerance.
- Standard length is 3.00 m and one end is provided with a coupling.
- Used mainly in indoor applications such as industrial facilities, business centers, workshops and high-rise buildings.

### 90°-IMC Elbow / PG Pre-Galvanized( TS EN 10346 - TS EN 10143)

Description	EMT Measure	Pack Unit (pcs)	Pack Weight (kg)	Order Code
IMC 1/2" 90°Elbow	1/2"	100	20,00	1070496
IMC 3/4" 90°Elbow	3/4"	50	16,00	1070497
IMC 1" 90°Elbow	1"	40	22,00	1070498
IMC 1 1/4" 90°Elbow	1 1/4"	30	26,00	1070499
IMC 1 1/2" 90°Elbow	1 1/2"	20	26,00	1070500
IMC 2" 90°Elbow	2"	8	18,00	1070501
IMC 2 1/2" 90°Elbow	2 1/2"	4	5,50	1070502
IMC 3" 90°Elbow	3"	2	8,60	1070503
IMC 4" 90°Elbow	4"	1	15,00	1070504



- Certified to GOST-R, EAC and CE standards.
- Manufactured from galvanized steel.
- Elbows are pre-galvanized.
- Used for 90° elbow of IMC conduits.

### 45°-IMC Elbow / PG Pre-Galvanized( TS EN 10346 - TS EN 10143)

Description	EMT Measure	Pack Unit (pcs)	Pack Weight (kg)	Order Code
IMC 1/2" 45°Elbow	1/2"	100	20,00	1070505
IMC 3/4" 45°Elbow	3/4"	50	16,00	1070506
IMC 1" 45°Elbow	1"	40	22,00	1070507
IMC 1 1/4" 45°Elbow	1 1/4"	30	26,00	1070508
IMC 1 1/2" 45°Elbow	1 1/2"	20	26,00	1070509
IMC 2" 45°Elbow	2"	8	18,00	1070510
IMC 2 1/2" 45°Elbow	2 1/2"	4	5,50	1070511
IMC 3" 45°Elbow	3"	2	8,60	1070512
IMC 4" 45°Elbow	4"	1	15,00	1070513



- Certified to GOST-R, EAC and CE standards.
- Manufactured from galvanized steel.
- Elbows are pre-galvanized.
- Used for 45° elbow of IMC conduits.

- Please indicate order code in your orders.
- Please contact us for special dimensions.
- Material weights may vary by  $\pm 10\%$

• All dimensions are given as in mm

- EG= Electro-Galvanized
- PG= Pre-Galvanized
- SS= Stainless Steel
- HDG= Hot Dip Galvanized

# E-LINE A

## IMC Pre-Galvanized Steel Pipe and Accessories

### Panel Type Connector (HUB)



Description	EMT Measure	Pack Unit (pcs)	Pack Weight (kg)	Order Code
IMC 1/2" Panel Type Connector/Zamak	1/2"	50	3,20	1070686
IMC 3/4" Panel Type Connector/Zamak	3/4"	50	4,00	1070687
IMC 1" Panel Type Connector/Zamak	1"	25	2,66	1070688
IMC 1 1/4" Panel Type Connector/Zamak	1 1/4"	50	20,00	1070689
IMC 1 1/2" Panel Type Connector/Zamak	1 1/2"	20	10,50	1070690
IMC 2" Panel Type Connector/Zamak	2"	20	13,00	1070691
IMC 2 1/2" Panel Type Connector/Zamak	2 1/2"	10	14,00	1070692
IMC 3" Panel Type Connector/Zamak	3"	8	17,00	1070693
IMC 4" Panel Type Connector/Zamak	4"	5	13,00	1070694



- UL, GOST-R, EAC and CE certified.
- Original zinc-die-cast (zamak).
- Provided with a flat rubber gasket (flatrubber-sealed).
- Used for the threaded conduit pipes' junction boxes, panels, etc. connections.

### Erikson Coupling – 3-Piece (Union) Electro-Galvanized (TS 149)

Description	EMT Measure	Pack Unit (pcs)	Pack Weight (kg)	Order Code
IMC 1/2" Erikson Coupling	1/2"	120	14,00	1070695
IMC 3/4" Erikson Coupling	3/4"	100	17,00	1070696
IMC 1" Erikson Coupling	1"	75	19,00	1070697
IMC 1 1/4" Erikson Coupling	1 1/4"	50	22,00	1070698
IMC 1 1/2" Erikson Coupling	1 1/2"	25	20,00	1070699
IMC 2" Erikson Coupling	2"	20	22,00	1070700
IMC 2 1/2" Erikson Coupling	2 1/2"	10	15,00	1070701
IMC 3" Erikson Coupling	3"	6	12,00	1070702
IMC 4" Erikson Coupling	4"	4	10,00	1070703



- UL, GOST-R, EAC and CE certified.
- Manufactured from cast iron; 3-piece-construction.
- Electro-galvanized coated.
- Used for joining fixed threaded conduits.

### Conduit Coupling Electro-Galvanized (TS 149)

Description	EMT Measure	Pack Unit (pcs)	Pack Weight (kg)	Order Code
IMC 1/2" Conduit Coupling EG	1/2"	500	16,30	1070514
IMC 3/4" Conduit Coupling EG	3/4"	250	10,05	1070515
IMC 1" Conduit Coupling EG	1"	200	11,30	1070516
IMC 1 1/4" Conduit Coupling EG	1 1/4"	150	14,50	1070517
IMC 1 1/2" Conduit Coupling EG	1 1/2"	120	13,30	1070518
IMC 2" Conduit Coupling EG	2"	80	14,00	1070519
IMC 2 1/2" Conduit Coupling EG	2 1/2"	40	21,00	1070520
IMC 3" Conduit Coupling EG	3"	20	19,80	1070521
IMC 4" Conduit Coupling EG	4"	20	17,30	1070522



- GOST-R, EAC and CE certified.
- Manufactured from galvanized steel.
- Electro-galvanized coated.
- Used for joining threaded conduits.

### Conduit Joining Nipple Electro-Galvanized (TS 149)

Description	EMT Measure	Pack Unit (pcs)	Pack Weight (kg)	Order Code
IMC 1/2" Conduit Joining Nipple EG	1/2"	25	0,90	1070523
IMC 3/4" Conduit Joining Nipple EG	3/4"	25	1,40	1070524
IMC 1" Conduit Joining Nipple EG	1"	20	1,90	1070525
IMC 1 1/4" Conduit Joining Nipple EG	1 1/4"	20	2,50	1070526
IMC 1 1/2" Conduit Joining Nipple EG	1 1/2"	15	2,80	1070527
IMC 2" Conduit Joining Nipple EG	2"	15	3,20	1070528
IMC 2 1/2" Conduit Joining Nipple EG	2 1/2"	10	3,40	1070529
IMC 3" Conduit Joining Nipple EG	3"	6	3,10	1070530
IMC 4" Conduit Joining Nipple EG	4"	4	4,20	1070531



- GOST-R, EAC and CE certified.
- Manufactured from cast iron.
- Electro-galvanized coated.
- Used for joining internally threaded conduits

- Please indicate order code in your orders.
- Please contact us for special dimensions.
- Material weights may vary by  $\pm 10\%$

- All dimensions are given as in mm

- EG= Electro-Galvanized
- PG= Pre-Galvanized
- SS= Stainless Steel
- HDG= Hot Dip Galvanized

# E-LINE A

## IMC Pre-Galvanized Steel Pipe and Accessories

### Hanger Clip Electro-Galvanized (TS 149)



Description	EMT Measure	Pack Unit (pcs)	Pack Weight (kg)	Order Code
IMC 1/2" Hanger Clip	1/2"	400	12,00	1070704
IMC 3/4" Hanger Clip	3/4"	300	10,00	1070705
IMC 1" Hanger Clip	1"	200	9,00	1070706
IMC 1 1/4" Hanger Clip	1 1/4"	150	8,00	1070707
IMC 1 1/2" Hanger Clip	1 1/2"	100	7,00	1070708
IMC 2" Hanger Clip	2"	75	6,00	1070709
IMC 2 1/2" Hanger Clip	2 1/2"	50	6,00	1070710
IMC 3" Hanger Clip	3"	50	6,30	1070711
IMC 4" Hanger Clip	4"	25	4,00	1070712



- UL, GOST-R, EAC and CE certified.
- Manufactured from galvanized steel.
- Electro-galvanized coated.
- Used to secure IMC conduits onto flat surfaces.

### Strut hanger clip Electro-Galvanized (TS 149)

Description	EMT Measure	Pack Unit (pcs)	Pack Weight (kg)	Order Code
IMC 1/2" Strut hanger clip	1/2"	300	15,00	1070713
IMC 3/4" Strut hanger clip	3/4"	300	20,00	1070714
IMC 1" Strut hanger clip	1"	250	18,00	1070715
IMC 1 1/4" Strut hanger clip	1 1/4"	200	16,30	1070716
IMC 1 1/2" Strut hanger clip	1 1/2"	150	19,07	1070717
IMC 2" Strut hanger clip	2"	150	22,50	1070718
IMC 2 1/2" Strut hanger clip	2 1/2"	100	17,00	1070719
IMC 3" Strut hanger clip	3"	100	20,00	1070720
IMC 4" Strut hanger clip	4"	50	14,80	1070721



- UL, GOST-R, EAC and CE certified.
- Manufactured from galvanized steel.
- Electro-galvanized coated.
- Hot-dip galvanized versions are also available.
- Used to secure IMC conduits onto C and G profiles.

### Fastening Clip, Two Hole Electro-Galvanized (TS 149)

Description	EMT Measure	Pack Unit (pcs)	Pack Weight (kg)	Order Code
IMC 1/2" Fastening Clip, Two Hole	1/2"	100	1,05	1070722
IMC 3/4" Fastening Clip, Two Hole	3/4"	100	1,30	1070723
IMC 1" Fastening Clip, Two Hole	1"	50	0,85	1070724
IMC 1 1/4" Fastening Clip, Two Hole	1 1/4"	50	1,05	1070725
IMC 1 1/2" Fastening Clip, Two Hole	1 1/2"	25	1,09	1070726
IMC 2" Fastening Clip, Two Hole	2"	20	1,26	1070727
IMC 2 1/2" Fastening Clip, Two Hole	2 1/2"	100	10,00	1070728
IMC 3" Fastening Clip, Two Hole	3"	100	13,00	1070729
IMC 4" Fastening Clip, Two Hole	4"	50	9,00	1070730



- UL, GOST-R, EAC and CE certified.
- Manufactured from galvanized steel.
- Electro-galvanized coated.
- Used to secure IMC conduits onto flat surfaces.

### Fastening Clip, Single Hole Electro-Galvanized (TS 149)

Description	EMT Measure	Pack Unit (pcs)	Pack Weight (kg)	Order Code
IMC 1/2" Fastening Clip, Single Hole	1/2"	200	1,60	1070731
IMC 3/4" Fastening Clip, Single Hole	3/4"	200	2,00	1070732
IMC 1" Fastening Clip, Single Hole	1"	100	1,40	1070733
IMC 1 1/4" Fastening Clip, Single Hole	1 1/4"	50	1,20	1070734
IMC 1 1/2" Fastening Clip, Single Hole	1 1/2"	50	1,70	1070735
IMC 2" Fastening Clip, Single Hole	2"	25	1,10	1070736
IMC 2 1/2" Fastening Clip, Single Hole	2 1/2"	100	15,00	1070737
IMC 3" Fastening Clip, Single Hole	3"	100	16,50	1070738
IMC 4" Fastening Clip, Single Hole	4"	50	10,00	1070739



- UL, GOST-R, EAC and CE certified.
- Manufactured from galvanized steel.
- Electro-galvanized coated.
- Used to secure IMC conduits onto flat surfaces.

- Please indicate order code in your orders.
- Please contact us for special dimensions.
- Material weights may vary by ± 10%

• All dimensions are given as in mm

- EG= Electro-Galvanized
- PG= Pre-Galvanized
- SS= Stainless Steel
- HDG= Hot Dip Galvanized

# E-LINE A

## IMC Hot-Dip Galvanized Steel Conduits and Accessories

### IMC Steel Conduit Hot Dip Galvanized (TS EN ISO 1461)



Description	EMT Measure	Outer Diameter	Joint Thickness (mm)	Weight (kg/m)	Order Code
IMC 1/2"	1/2"	20,70	1,97	0,92	1070532
IMC 3/4"	3/4"	26,10	2,10	1,25	1070533
IMC 1"	1"	32,77	2,35	1,77	1070534
IMC 1 1/4"	1 1/4"	41,59	2,42	2,35	1070535
IMC 1 1/2"	1 1/2"	47,82	2,54	2,84	1070536
IMC 2"	2"	59,93	2,67	3,81	1070537
IMC 2 1/2"	2 1/2"	72,52	3,81	6,56	1070538
IMC 3"	3"	88,29	3,81	8,08	1070539
IMC 4"	4"	113,44	3,81	10,42	1070540



- Certified according to ANSI C80.6, GOST-R, EAC, and CE.
- Deburred electrical installation conduits.
- Pre-galvanized coating and bendable.
- Specified physical properties are within  $\pm 5\%$  tolerance.
- Standard length: 3.00 m, with one end threaded.
- Suitable for indoor use, particularly in industrial facilities, business centers, workshops, and high-rise buildings.

### 90°-IMC Elbow / HDG Hot Dip Galvanized (TS EN ISO 1461)

Description	EMT Measure	Pack Unit (pcs)	Pack Weight (kg)	Order Code
IMC 1/2" 90°Elbow	1/2"	100	20,00	1070541
IMC 3/4" 90°Elbow	3/4"	50	16,00	1070542
IMC 1" 90°Elbow	1"	40	22,00	1070543
IMC 1 1/4" 90°Elbow	1 1/4"	30	26,00	1070544
IMC 1 1/2" 90°Elbow	1 1/2"	20	26,00	1070545
IMC 2" 90°Elbow	2"	8	18,00	1070546
IMC 2 1/2" 90°Elbow	2 1/2"	4	5,50	1070547
IMC 3" 90°Elbow	3"	2	8,60	1070548
IMC 4" 90°Elbow	4"	1	15,00	1070549



- Certified according to GOST-R, EAC, and CE.
- Made of galvanized steel.
- Used for 90° elbow of IMC conduits.

### 45°-IMC Elbow / HDG Hot Dip Galvanized (TS EN ISO 1461)

Description	EMT Measure	Pack Unit (pcs)	Pack Weight (kg)	Order Code
IMC 1/2" 45°Elbow	1/2"	100	20,00	1070550
IMC 3/4" 45°Elbow	3/4"	50	16,00	1070551
IMC 1" 45°Elbow	1"	40	22,00	1070552
IMC 1 1/4" 45°Elbow	1 1/4"	30	26,00	1070553
IMC 1 1/2" 45°Elbow	1 1/2"	20	26,00	1070554
IMC 2" 45°Elbow	2"	8	18,00	1070555
IMC 2 1/2" 45°Elbow	2 1/2"	4	5,50	1070556
IMC 3" 45°Elbow	3"	2	8,60	1070557
IMC 4" 45°Elbow	4"	1	15,00	1070558



- Certified according to GOST-R, EAC, and CE.
- Made of galvanized steel.
- Used for 45° elbow of IMC conduits.

- Please indicate order code in your orders.
- Please contact us for special dimensions.
- Material weights may vary by  $\pm 10\%$

- All dimensions are given as in mm

- EG= Electro-Galvanized
- PG= Pre-Galvanized
- SS= Stainless Steel
- HDG= Hot Dip Galvanized

# E-LINE A

## IMC Hot-Dip Galvanized Steel Conduits and Accessories

### Conduit Coupling / HDG Hot Dip Galvanized (TS EN ISO 1461)



Description	EMT Measure	Pack Unit (pcs)	Pack Weight (kg)	Order Code
IMC 1/2" Conduit Coupling	1/2"	500	16,30	1070559
IMC 3/4" Conduit Coupling	3/4"	250	10,50	1070560
IMC 1" Conduit Coupling	1"	200	11,30	1070561
IMC 1 1/4" Conduit Coupling	1 1/4"	150	14,50	1070562
IMC 1 1/2" Conduit Coupling	1 1/2"	120	13,30	1070563
IMC 2" Conduit Coupling	2"	80	14,00	1070564
IMC 2 1/2" Conduit Coupling	2 1/2"	40	21,00	1070565
IMC 3" Conduit Coupling	3"	20	19,80	1070566
IMC 4" Conduit Coupling	4"	20	17,30	1070567



- Certified according to GOST-R, EAC, and CE.
- Made of galvanized steel.
- Hot-dip galvanized coating.
- Used for joining threaded conduits.

### Conduit Joining Nipple / HDG Hot Dip Galvanized (TS EN ISO 1461)

Description	EMT Measure	Pack Unit (pcs)	Pack Weight (kg)	Order Code
IMC 1/2" Conduit Joining Nipple	1/2"	25	0,90	1070568
IMC 3/4" Conduit Joining Nipple	3/4"	25	1,40	1070569
IMC 1" Conduit Joining Nipple	1"	20	1,90	1070570
IMC 1 1/4" Conduit Joining Nipple	1 1/4"	20	2,50	1070571
IMC 1 1/2" Conduit Joining Nipple	1 1/2"	15	2,80	1070572
IMC 2" Conduit Joining Nipple	2"	15	3,20	1070573
IMC 2 1/2" Conduit Joining Nipple	2 1/2"	10	3,40	1070574
IMC 3" Conduit Joining Nipple	3"	6	3,10	1070575
IMC 4" Conduit Joining Nipple	4"	4	4,20	1070576



- Certified according to GOST-R, EAC, and CE.
- Made of cast iron.
- Hot-dip galvanized coating.
- Used for joining internally threaded conduits.

- Please indicate order code in your orders.
- Please contact us for special dimensions.
- Material weights may vary by  $\pm 10\%$

• All dimensions are given as in mm

- EG= Electro-Galvanized
- PG= Pre-Galvanized
- SS= Stainless Steel
- HDG= Hot Dip Galvanized

# E-LINE A

## RSC Hot-Dip Galvanized Steel Conduits and Accessories

### RSC Steel Conduit Hot Dip Galvanized (TS EN ISO 1461)



Description	EMT Measure	Outer Diameter	Joint Thickness (mm)	Weight (kg/m)	Order Code
RSC 1/2"	1/2"	21,34	2,64	1,17	1070577
RSC 3/4"	3/4"	26,67	2,72	1,56	1070578
RSC 1"	1"	33,40	3,20	2,28	1070579
RSC 1 1/4"	1 1/4"	42,16	3,38	2,99	1070580
IMC 1 1/2" PG	1 1/2"	48,26	3,51	3,70	1070581
RSC 2"	2"	60,33	3,71	4,94	1070582
RSC 2 1/2"	2 1/2"	73,03	4,90	7,84	1070583
RSC 3"	3"	88,90	5,21	10,15	1070584
RSC 4"	4"	114,30	5,72	14,46	1070585



- Certified according to UL 6, ANSI C80.1, GOST-R, EAC, and CE.
- Deburred electrical installation conduits.
- Hot-dip galvanized coating.
- Specified physical properties are within ±5% tolerance.
- Standard length: 3.05 m, with one end threaded.
- Suitable for heavy industry (iron and cement plants), refineries, power plants, and
- EX-proof installations, for underground, indoor, and outdoor environments.

### 90°- RSC Elbow / HDG Hot Dip Galvanized (TS EN ISO 1461)

Description	EMT Measure	Pack Unit (pcs)	Pack Weight (kg)	Order Code
RSC 1/2" 90°Elbow	1/2"	50	17,50	1070586
RSC 3/4" 90°Elbow	3/4"	50	25,00	1070587
RSC 1" 90°Elbow	1"	25	22,50	1070588
RSC 1 1/4" 90°Elbow	1 1/4"	20	29,00	1070589
RSC 1 1/2" 90°Elbow	1 1/2"	15	29,30	1070590
RSC 2" 90°Elbow	2"	10	30,00	1070591
RSC 2 1/2" 90°Elbow	2 1/2"	4	22,00	1070592
RSC 3" 90°Elbow	3"	2	17,30	1070593
RSC 4" 90°Elbow	4"	1	15,00	1070594



- Certified according to UL, GOST-R, EAC, and CE.
- Made of galvanized steel.
- Hot-dip galvanized coating.
- Used for 90° elbow of RSC conduits.

### 45°- RSC Elbow / HDG Hot Dip Galvanized (TS EN ISO 1461)

Description	EMT Measure	Pack Unit (pcs)	Pack Weight (kg)	Order Code
RSC 1/2" 45°Elbow	1/2"	50	17,50	1070595
RSC 3/4" 45°Elbow	3/4"	50	25,00	1070596
RSC 1" 45°Elbow	1"	25	22,50	1070597
RSC 1 1/4" 45°Elbow	1 1/4"	20	29,00	1070598
RSC 1 1/2" 45°Elbow	1 1/2"	15	29,30	1070599
RSC 2" 45°Elbow	2"	10	30,00	1070600
RSC 2 1/2" 45°Elbow	2 1/2"	4	22,00	1070601
RSC 3" 45°Elbow	3"	2	17,30	1070602
RSC 4" 45°Elbow	4"	1	15,00	1070603



- Certified according to UL, GOST-R, EAC, and CE.
- Made of galvanized steel.
- Hot-dip galvanized coating.
- Used for 45° elbow of RSC conduits.

### Conduit Coupling / HDG Hot Dip Galvanized (TS EN ISO 1461)

Description	EMT Measure	Pack Unit (pcs)	Pack Weight (kg)	Order Code
RSC 1/2" Conduit Coupling	1/2"	300	15,0	1070740
RSC 3/4" Conduit Coupling	3/4"	200	17,0	1070741
RSC 1" Conduit Coupling	1"	120	15,6	1070742
RSC 1 1/4" Conduit Coupling	1 1/4"	80	14,8	1070743
RSC 1 1/2" Conduit Coupling	1 1/2"	80	17,2	1070744
RSC 2" Conduit Coupling	2"	60	20,4	1070745
RSC 2 1/2" Conduit Coupling	2 1/2"	18	10,8	1070746
RSC 3" Conduit Coupling	3"	12	15,6	1070747
RSC 4" Conduit Coupling	4"	8	10,0	1070748



- Certified according to UL, GOST-R, EAC, and CE.
- Made of galvanized steel.
- Hot-dip galvanized coating.
- Used for joining RSC conduits.

- Please indicate order code in your orders.
- Please contact us for special dimensions.
- Material weights may vary by ± 10%

- All dimensions are given as in mm

- EG= Electro-Galvanized
- PG= Pre-Galvanized
- SS= Stainless Steel
- HDG= Hot Dip Galvanized

# E-LINE A

## PP Straight Conduit and Accessories



### PP V0 Straight Conduit – Light Series / Halogen-Free / Flame Retardant

Description	EMT Measure	Outer Diameter	Joint Thickness (mm)	Pack Unit (pcs)	Order Code
PP Ø16 Light Series	16	13,7	1,15	34	1070459
PP Ø20 Light Series	20	17,6	1,20	34	1070460
PP Ø25 Light Series	25	22,2	1,40	25	1070461
PP Ø32 Light Series	32	28,7	1,65	17	1070462



- Halogen-free, flame-retardant plastic electrical conduit system, suitable for indoor use in areas with
- low mechanical stress, installed under plaster, on plaster, inside drywall, or suspended ceilings.
- Technical Specifications:
- Conduit Length: 3 m
- Material: PP-based thermoplastic
- Compression Strength: 320 N / 60 s / 23±2°C, Class 2
- Impact Resistance: 2 kg / 100 mm / -25°C, Class 3
- Minimum Installation and Storage Temperature: -25°C, Class 4
- Maximum Installation and Storage Temperature: +60°C, Class 1

### PP V0 Straight Conduit – Heavy Series / Halogen-Free / Flame Retardant

Description	Outer Diameter	Inner Diameter	Joint Thickness (mm)	Pack Unit (pcs)	Order Code
PP Ø16 Light Series	16	12,0	2,00	34	1070463
PP Ø20 Light Series	20	15,8	2,10	34	1070464
PP Ø25 Light Series	25	20,6	2,20	25	1070465
PP Ø32 Light Series	32	26,9	2,55	17	1070466



- Halogen-free, flame-retardant plastic electrical conduit system, suitable for all types of
- electrical installations with high mechanical stress, including buildings, prefabricated
- structures, under plaster and on plaster applications, reinforced concrete and tunnel
- formwork, inside drywall, under flooring, and suspended ceilings.
- Technical Specifications:
- Material: PP-based thermoplastic
- Compression Strength: 1250 N / 60 s / 23±2°C, Class 4
- Impact Resistance: 2 kg / 100 mm / -25°C, Class 3
- Minimum Installation and Storage Temperature: -25°C, Class 4
- Maximum Installation and Storage Temperature: +60°C, Class 1

### PP Straight Conduit Coupling

Description	Outer Diameter	Inner Diameter	Boy (mm)	Pack Unit (pcs)	Order Code
PP Ø16 Light Series	18,6	16,1	80	20	1070475
PP Ø20 Light Series	23,0	20,1	80	20	1070476
PP Ø25 Light Series	28,0	25,2	80	20	1070477
PP Ø32 Light Series	35,0	32,2	100	10	1070478



- Installation Temperature: -25 °C / +90 °C
- Application: Used to mount straight conduit on plastered surfaces.

- Please indicate order code in your orders.
- Please contact us for special dimensions.
- Material weights may vary by ± 10%

• All dimensions are given as in mm

- EG= Electro-Galvanized
- PG= Pre-Galvanized
- SS= Stainless Steel
- HDG= Hot Dip Galvanized

# E-LINE A

## PP Straight Conduit and Accessories



### PP Elbow

Description	EMT Measure	Outer Diameter	Joint Thickness (mm)	Pack Unit (pcs)	Order Code
PP Ø16 Elbow	19,0	16,1	70	25	1070467
PP Ø20 Elbow	23,0	20,0	90	25	1070468
PP Ø25 Elbow	29,0	25,2	120	25	1070469
PP Ø32 Elbow	36,0	32,3	150	10	1070470



### PP Split Elbow

Description	Outer Diameter	Inner Diameter	Joint Thickness (mm)	Pack Unit (pcs)	Order Code
PP Ø16 Split Elbow	20,5	16,1	38,5	25	1070471
PP Ø20 Split Elbow	25,2	20,1	47	25	1070472
PP Ø25 Split Elbow	30,3	25,1	57,5	25	1070473
PP Ø32 Split Elbow	37,7	32,1	66,5	15	1070474



### PP T-Connector

Description	Outer Diameter	Inner Diameter	Joint Thickness (mm)	Pack Unit (pcs)	Order Code
PP Ø16 Light Series	20,5	16,1	64,5	25	1070479
PP Ø20 Light Series	25,5	20,1	70	25	1070480
PP Ø25 Light Series	30,5	25,1	75	25	1070481
PP Ø32 Light Series	38,3	32,2	82,7	15	1070482



### PP Covered Elbow

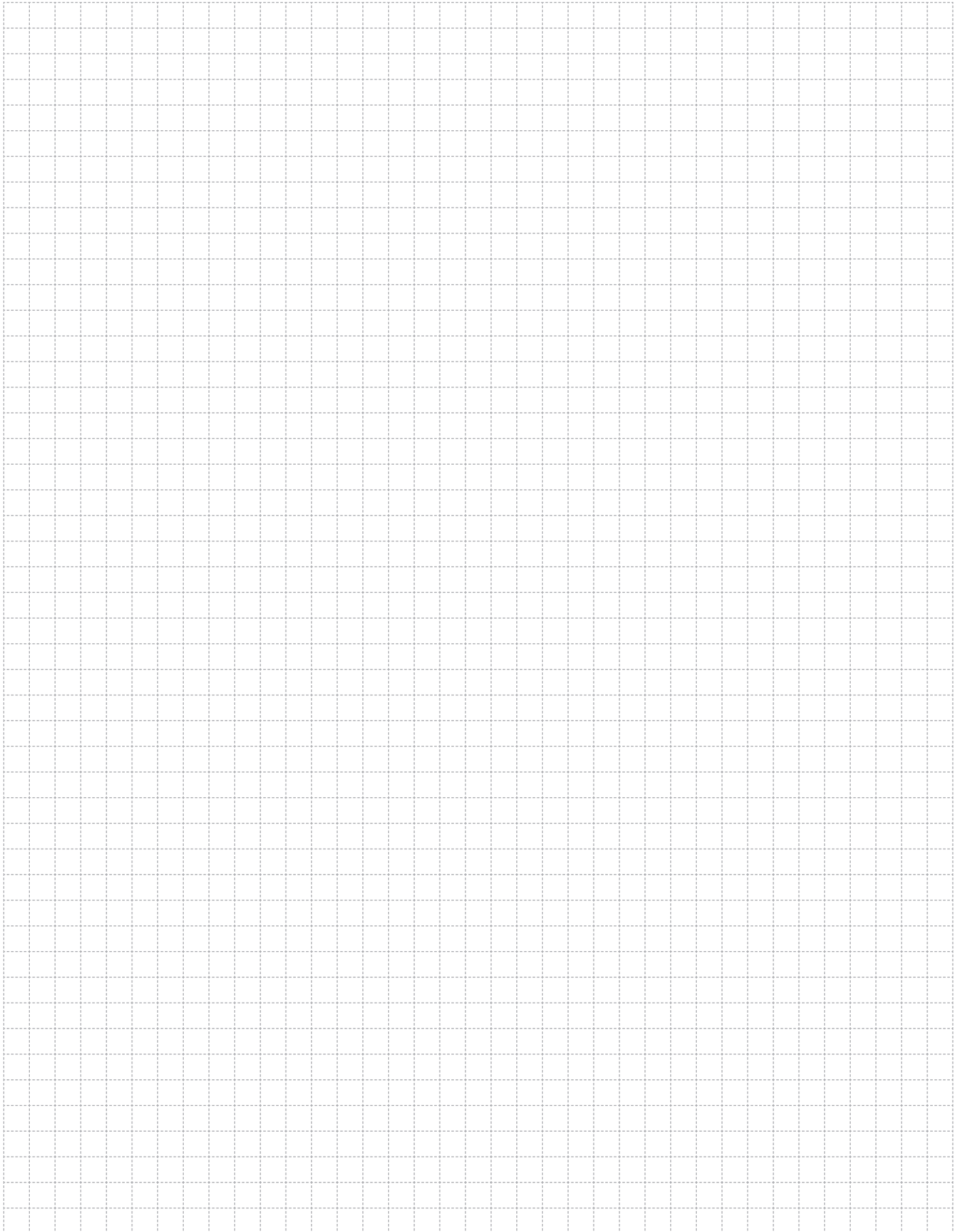
Description	Outer Diameter	Inner Diameter	Boy (mm)	Pack Unit (pcs)	Order Code
PP Ø16 Covered Elbow	18,2	15,6	25	100	1070483
PP Ø20 Covered Elbow	22,2	19,2	30	100	1070484
PP Ø25 Covered Elbow	28,6	24,6	30	100	1070485
PP Ø32 Covered Elbow	35,4	30,2	40	100	1070486



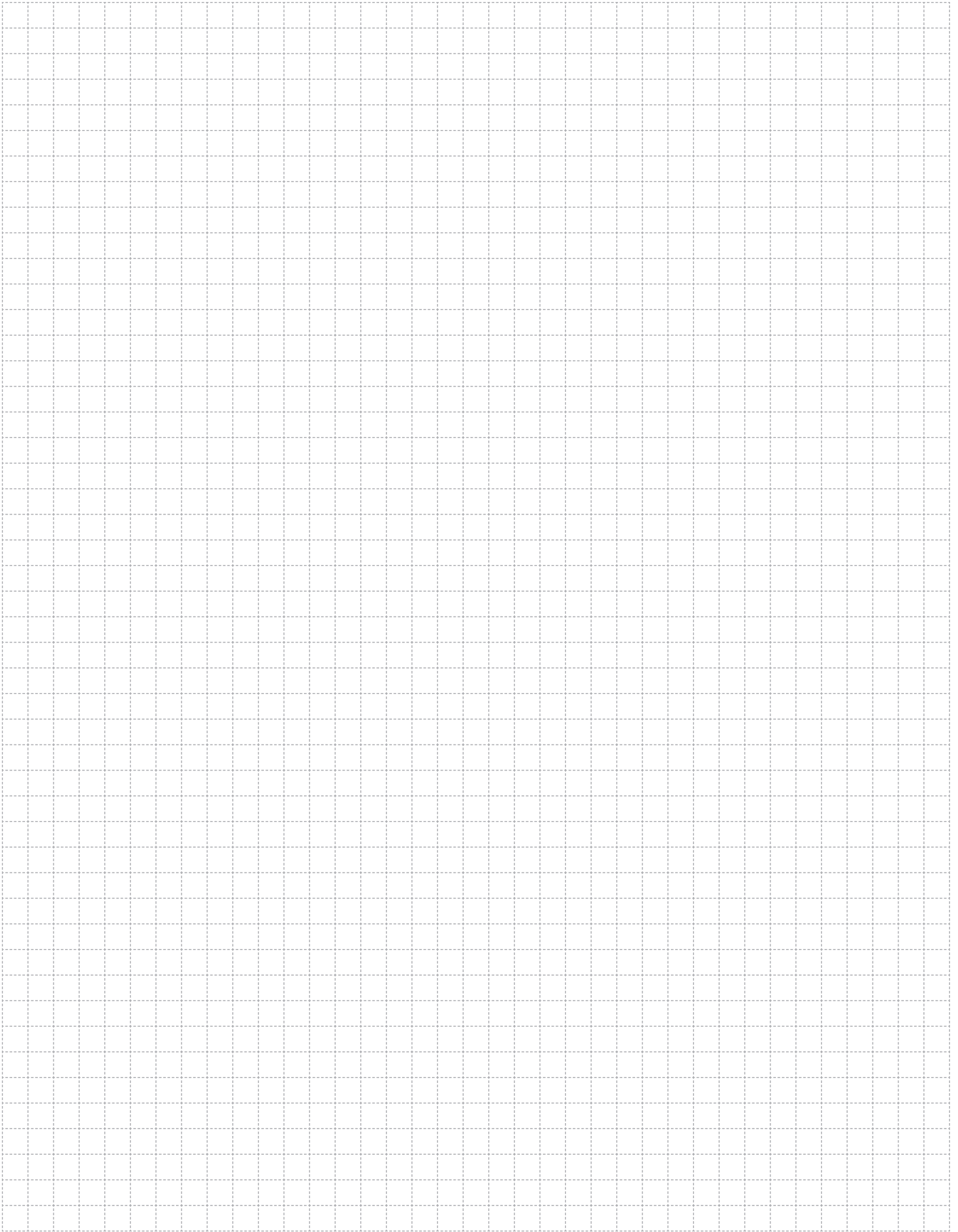
- Please indicate order code in your orders.
- Please contact us for special dimensions.
- Material weights may vary by  $\pm 10\%$

- All dimensions are given as in mm

- EG= Electro-Galvanized
- PG= Pre-Galvanized
- SS= Stainless Steel
- HDG= Hot Dip Galvanized



A large grid area for taking notes, consisting of a grid of small squares formed by dashed lines.



A large grid area for taking notes, consisting of a 20x20 grid of small squares.

