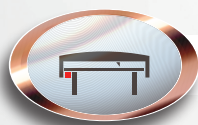


# E-LINE KT



• Textile Cutting and Spreading Tables



• Moving Ceiling and Door Systems



• Assembly and Test Lines



## E-LINE KT

---

Trolley Busbar Systems .....	2
KT Trolley Busbar .....	3
KT Feeder Unit .....	4
KT Installation Manual .....	5

# E-LINE KT

## Trolley Busbar Systems

- Textile Cutting and Spreading Tables
- Moving Ceiling and Door Systems
- Assembly and Test Lines

It consists of copper conductors and current collectors in the C-PVC body. The uninterrupted energy supply and movement of the system is provided by current collectors connected to the system mechanically.

The eliminates the possibilities such as accident, malfunction in energy distribution with suspended and reel cable in conventional systems. Conductors are enclosed in C-PVC housing and personnel safety is maximized.

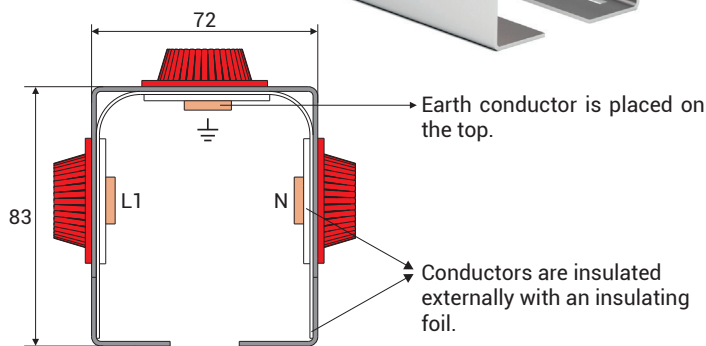
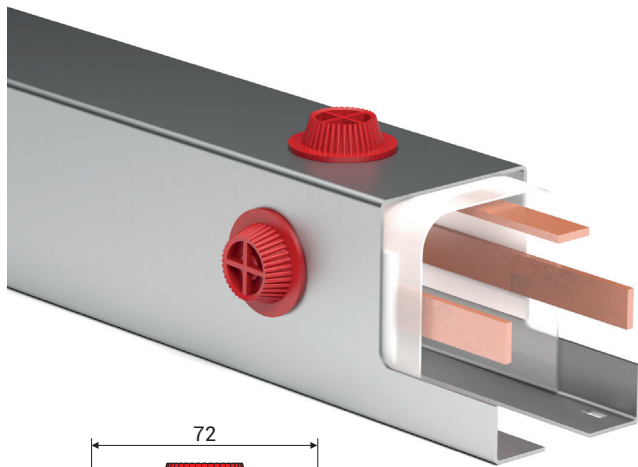
There is no fixed connection between the conductor housings and the conductors and between the C-PVC housing and the sliding hangers, the necessary expansion opportunity is provided, therefore the expansion element is unrequired.

### Cautions:

If it is used in external environments exposed to rain, it is recommended to protect it with a cover such as a canopy.



## KT Galvanize Steel Housing Trolley Busbar



- **Number of Conductors:** 3 Conductors
- **Colour :** Metallic
- **Temperature range:** -20°C , +55°C.
- **Standard housing length:** 2,5 meters
- Housing is made of Pre-Galvanized sheet metal and plastic accessories are made of PA6 raw material.
- Conductors are protected against hand contact inside the housing.

### Standard 2,50 Meters

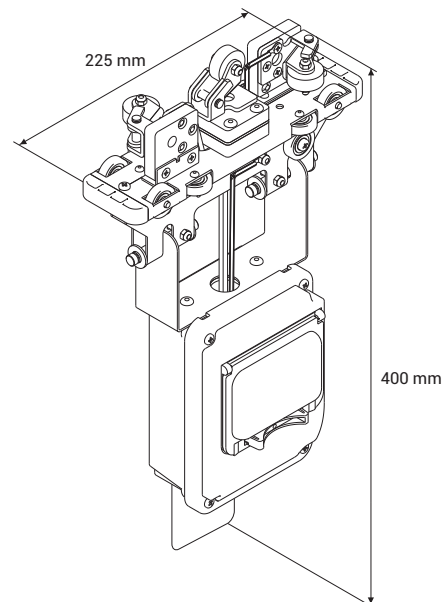
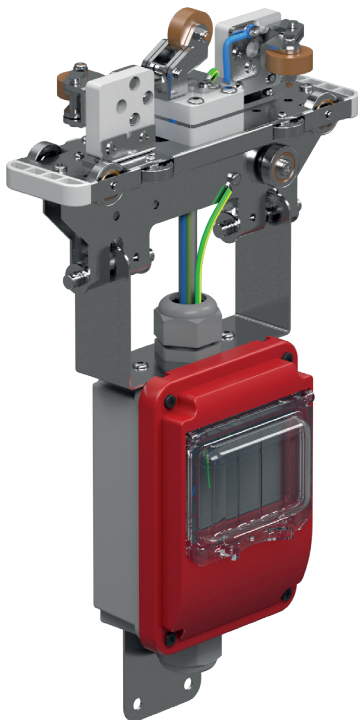
Model	Conductors Quantity-Current (A)	Weight (gr/m)	Conductor Cross Section (mm <sup>2</sup> )	Order Code
KT	3P - 100A	4400	3x15	3025172

### Special Length (1,00 - 1,50 - 2,00 Meters)

Model	Conductors Quantity-Current (A)	Weight (gr/m)	Conductor Cross Section (mm <sup>2</sup> )	Order Code
KT	3P - 100A	4400	3x15	3025139

Joint plastics are not included in the weight values.  
Total weight of the joint plastics and bolts is 0.79 Kg.

## KT A3 Current Collector



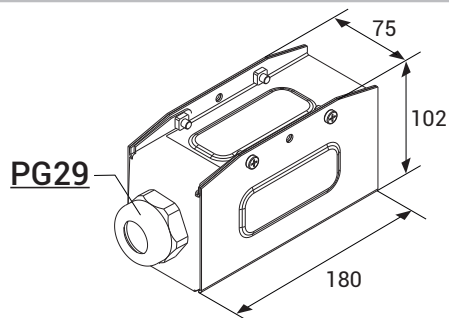
Current collector with round brushes facilitate the movement of the trolley inside the busbar by reducing the friction when the movement in the installation tables are provided by the operating personnel.

Model	Brushes Number-Current (A)	Weight (gr)	Order Code
KT-A3 Current Collector	3P - 25A	1850	3025166
KT-A3 Current Collector Brush Set		120	2053527

# E-LINE KT

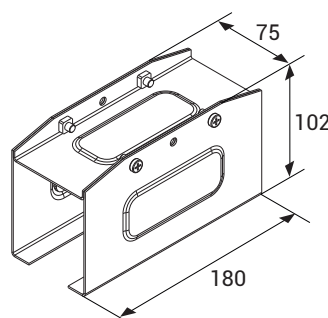
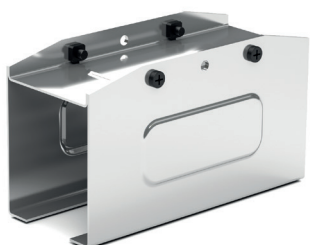


## KT Feeder Unit



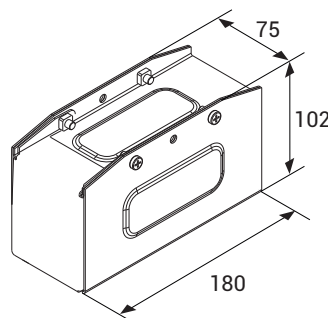
Description	Weight (gr)	Order Code
KT Feeder Unit	1000	3025171

## KT Joint Unit



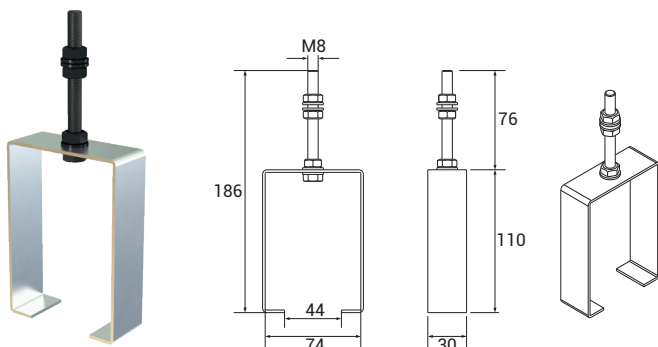
Description	Weight (gr)	Order Code
KT Joint Unit	800	2011166

## KT End Closure



Description	Weight (gr)	Order Code
KT End Closure	900	3025170

## KT Sliding Hanger



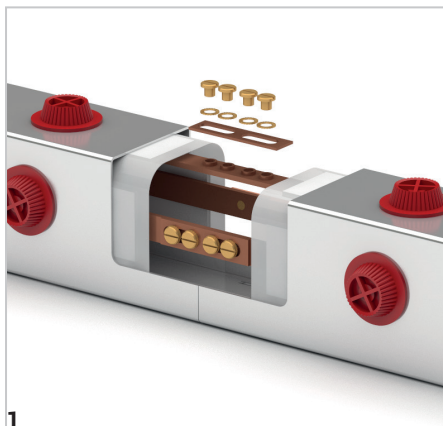
Description	Weight (gr)	Order Code
KT Sliding Hanger	200	3025169

Trolley busbar should be mounted with sliding hangers and each hangers should be between 1,30m - 1,50m.

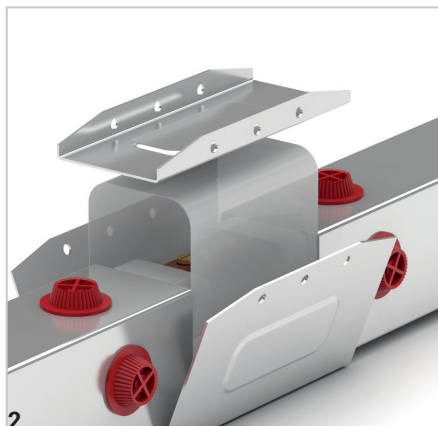
# E-LINE KT

## Installation Manual

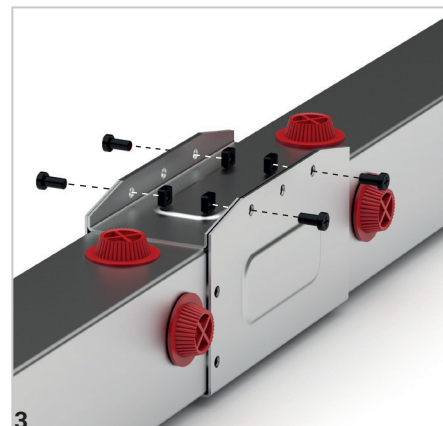
### KT - Installation Of Joint Unit



Connect the coppers with an joint unit.

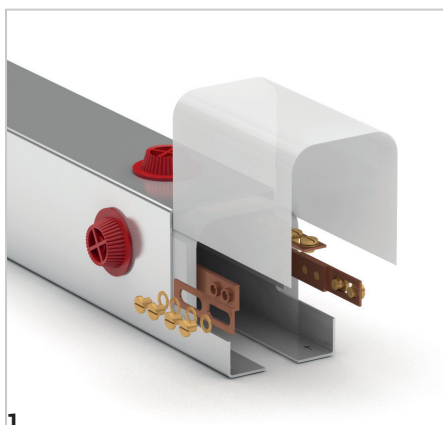


Place the insulating foil and close the covers.

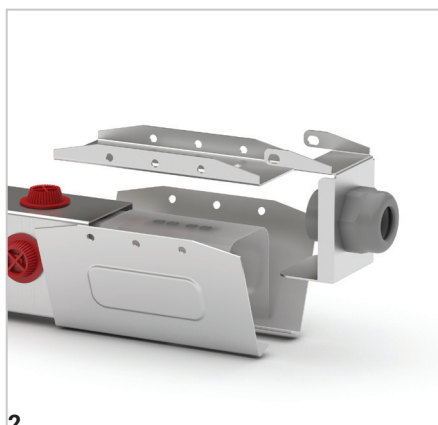


Complete the installation by screwing the covers.

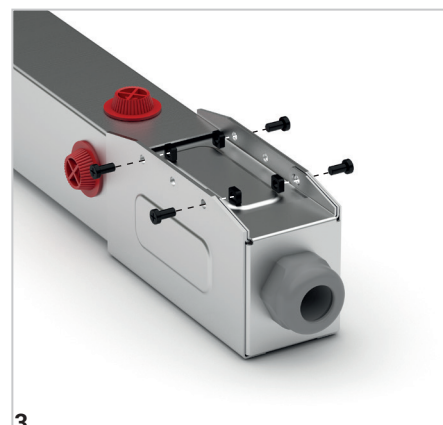
### KT - Feeder



Connect the feeding cables with the windowed tool and place the insulating foil.

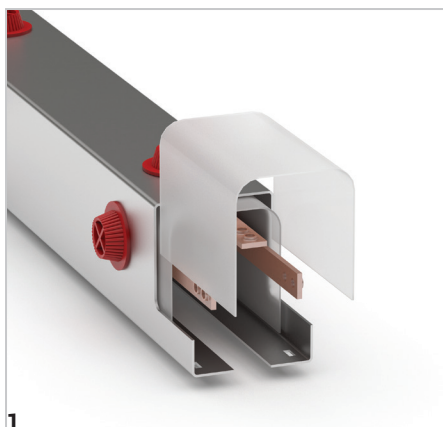


Place the covers.

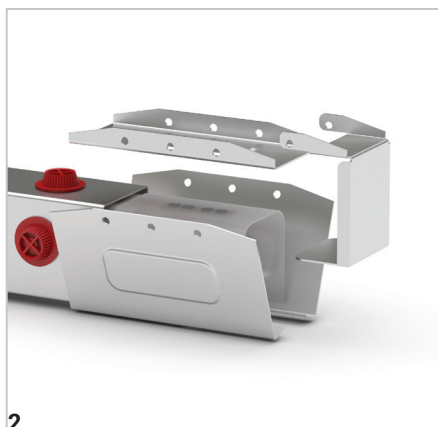


Complete the installation by screwing the covers.

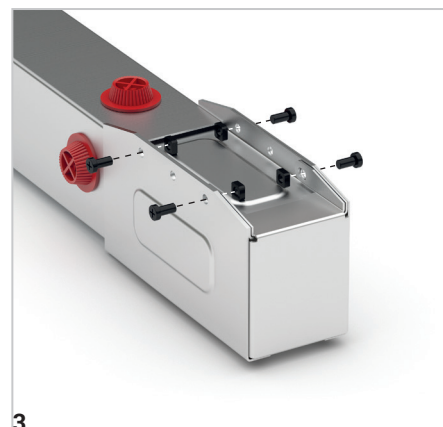
### KT - End Closure



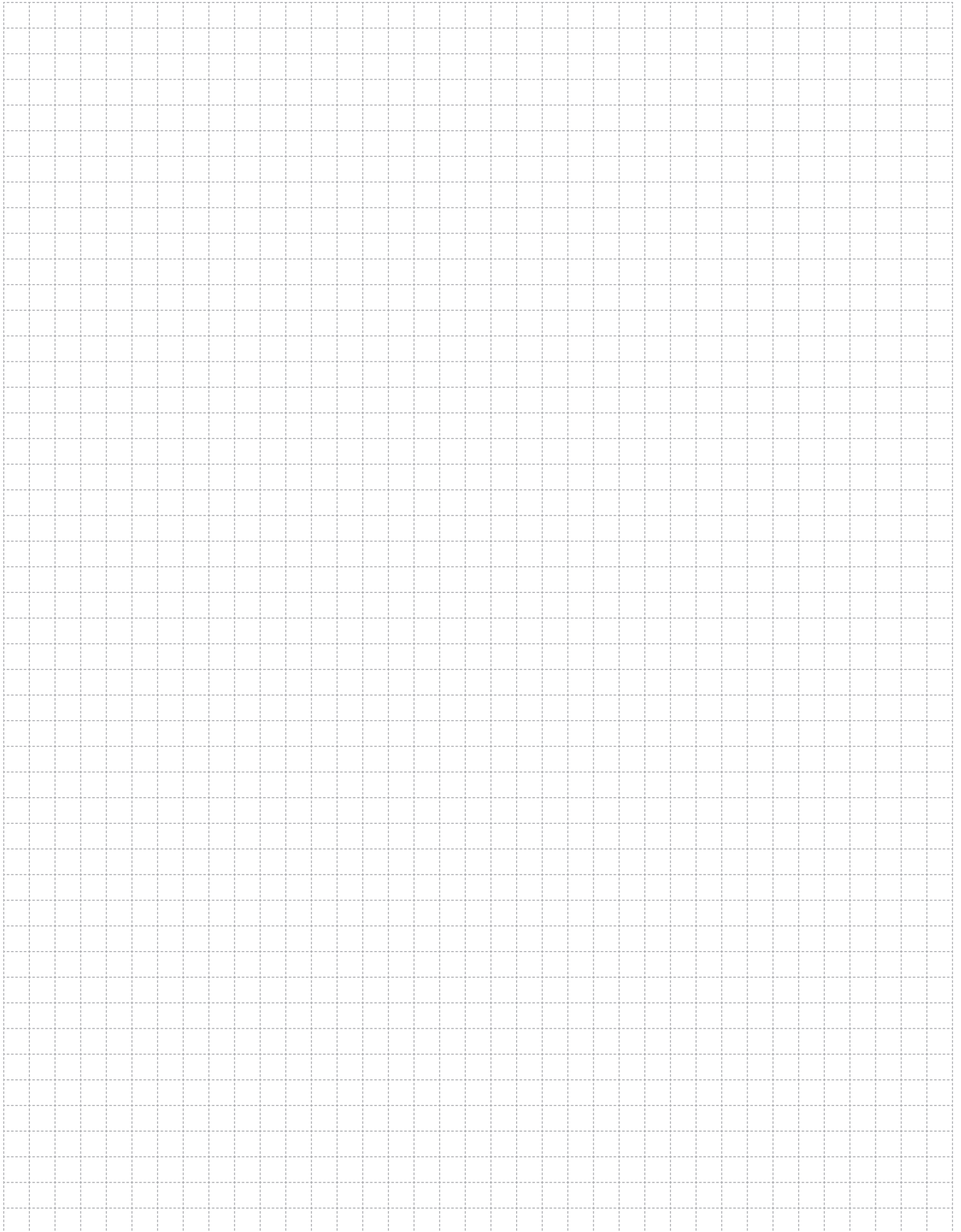
Place the insulating foil.



Install the covers.



Complete the installation by screwing the covers.



A large grid area for taking notes, consisting of a 20x30 grid of small squares.

# E-LINE KT

## Offer Request Form



Date :

Project Name	:	<input type="text"/>
Company	:	<input type="text"/>
Name Surname	:	<input type="text"/>
Tel	:	<input type="text"/>
E-Mail	:	<input type="text"/>
Address	:	<input type="text"/>

### General Data

Track Length	:	<input type="text"/>
Number of Cranes on Track	:	<input type="text"/>
Crane Travel Speed	:	<input type="text"/>

### Environmental Data

Operating Environment	:	<input type="checkbox"/> Indoor	<input type="checkbox"/> Outdoor
Ambient Temperature	:	<input type="text"/> °C min.	<input type="text"/> °C max.
Other Operating Conditions (Humidity, Dust, Chemical Influence, etc.)	:	<input type="text"/>	

### Electrical Data

Operating Voltage	:	<input type="text"/> Volts	<input type="checkbox"/> AC	<input type="checkbox"/> DC			
		<input type="text"/> Phases	<input type="checkbox"/> N	<input type="checkbox"/> PE			
Position and Number of Feeder	:	<input type="text"/> from End	<input type="text"/> from Middle				
Duty Cycle (%)	:	<input type="checkbox"/> 50%	<input type="checkbox"/> 60%	<input type="checkbox"/> 70%	<input type="checkbox"/> 80%	<input type="checkbox"/> 90%	<input type="checkbox"/> 100%

Motor Specifications	Crane - 1		Crane - 2		Crane - 3	
	Power (kW)	Current (A)	Power (kW)	Current (A)	Power (kW)	Current (A)
Hoist motors	<input type="text"/>	<input type="text"/>	<input type="text"/>	<input type="text"/>	<input type="text"/>	<input type="text"/>
Auxiliary motor	<input type="text"/>	<input type="text"/>	<input type="text"/>	<input type="text"/>	<input type="text"/>	<input type="text"/>
Long travel	<input type="text"/>	<input type="text"/>	<input type="text"/>	<input type="text"/>	<input type="text"/>	<input type="text"/>
Cross travel	<input type="text"/>	<input type="text"/>	<input type="text"/>	<input type="text"/>	<input type="text"/>	<input type="text"/>

### Options

Brackets Required	:	<input type="checkbox"/> Yes	<input type="checkbox"/> No
Repair Zone Required	:	<input type="checkbox"/> Yes	<input type="checkbox"/> No
		<input type="text"/> Qty	
Collector Replacement Required:		<input type="checkbox"/> Yes	<input type="checkbox"/> No
		<input type="text"/> Qty	
Descriptions	:	<input type="text"/>	

## DECLARATION

# CE DECLARATION OF CONFORMITY

**Product Group** E-Line TB Trolley Busbar Systems  
**Manufacturer** Akcaburgaz Mahallesi, 3114. Sokak,  
No:10 34522 Esenyurt-Istanbul

The objects of the declaration described below is in conformity with the relevant Cable gland harmonisation legislation. This declaration of conformity is issued under the sole responsibility of the manufacturer.

**Standard:**

**TS EN 61439-6**

Low-voltage switchgear and controlgear assemblies - Part 6: Busbar trunking systems

**CE - Directive:**

2014/35/EU "The Low Voltage Directive"

2014/30/EU "(EMC) Electromagnetic Compatibility Directive"

2011/65/EU "RoHS Directive"

**Technical Document Preparation Official:**

EAE Elektrik Asansor End. Insaat San. Tic. A.S.  
Akcaburgaz Mahallesi, 3114. Sokak, No:10 34522 Esenyurt-Istanbul

Mustafa AKÇELİK

**Date**

20.03.2026

**Document Authorized Signatory**

Elif Gamze KAYA OK  
Deputy General Manager

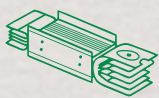


# SUSTAINABLE FUTURE

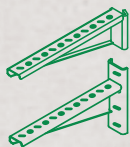
## Sustainability Management at EAE Elektrik



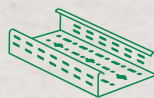
As part of our goal to support sustainable development and green transformation, measuring, evaluating, and managing all economic, environmental, and social impacts resulting from our sustainability practices is a key governance priority for EAE Elektrik. We act with great care in analyzing, monitoring, and managing the economic, environmental, and social impacts and risks that arise throughout our value chain in both our national and global operations.



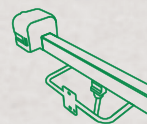
Busbar Systems



Support Systems



Cable Tray Systems



Trolley Busbar Systems



Fit-Out Solutions

*"We are working together with all our stakeholders to develop the electrical technologies that will build the future."*

You can visit our sustainability website at [sustainability.eaeelectric.com](https://sustainability.eaeelectric.com)



#FutureTogether

**EAE Elektrik**  
**Head Office**

Akcaburgaz Mahallesi,  
3114. Sokak, No: 10 34522  
Esenyurt - Istanbul - Turkiye  
Tel: +90 (212) 866 20 00  
Fax: +90 (212) 886 24 20

**EAE DL 4 Factory**  
**Busbar 2**

Organize Sanayi Bolgesi Mahallesi,  
6. Cadde, No: 14/10, 41455  
Dilovasi - Kocaeli - Turkiye  
Tel: +90 (262) 999 05 55  
Fax: +90 (262) 502 01 45



Please visit our website for the updated  
version of our catalogues.  
[www.eaelectric.com](http://www.eaelectric.com)



Catalogue 08 - En. / Rev. 16 0 Pcs. 25/05/2026  
E.U.

EAE has full right to make any revisions or changes on this catalogue without any prior notice.