

E-LINE KX-III

Busway Systems 400...6000A

EAE GROUP IN NUMBERS



Since 1973

EAE Group of Companies started its journey in the electrical sector in 1973 with the establishment of EAE Elektrik. Since its founding, EAE has grown rapidly, expanding its production and areas of operation by incorporating EAE Lighting in 1983, EAE Machinery in 1996, EAE Electrotechnics in 2004, and EAE Technology in 2009.

EAE carries out its production activities in accordance with ISO 9001 Quality Management, ISO 14001 Environmental Management, ISO 14064-1 Greenhouse Gas Management System, ISO 45001 Occupational Health and Safety Management, ISO 10002 Customer Satisfaction Management, ISO 50001 Energy Management System, and ISO 27001 Information Security Management System standards.



50+
Years Experience



8
Active Factories



370.000m²
Enclosed Space



3
R&D Centers



150+
Countries Exported To



CONTENTS

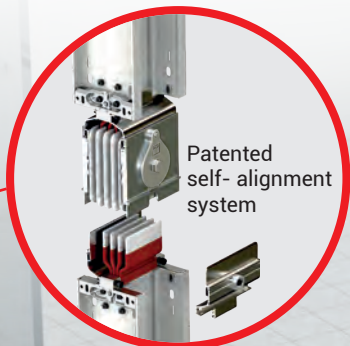
Introduction	2-3
Distribution & Horizontal Applications	4
Riser & Vertical Applications	5
Technical Characteristics	6-9
Order Code System	10
Standart Straight Lengths	11
Elbows	12-15
Standard Components	16
Standard Modules	17-18
Expansions	19
End Closer	20
Panel Connections	21-25
Panel Connections Dimensions	26
Sample Order Busplug Configuration	27
Busplug Installation Orientation	28-29
Tap-off Boxes	30-31
Horizontal End Feed Box (B10H - B11H)	32
Vertical End Feed Box (B10V - B11V)	33
End Cable Box Dimension Table	34
Feeder Boxes (B01,B02)	35
Vertical & Horizontal Busway Applications	36-37
Fixing Elements	38-46
Joint Structure.....	47
Measuring a Special Length	48
Certificates	49
Product Overview	50
Notes	51-52

E-LINE KX-III

Introduction



Tin plating is EAE standard application on all busway systems. Silver plating is optional. Tin / Silver plating, prevents oxide formation on all contact surfaces and minimizes contact resistance.



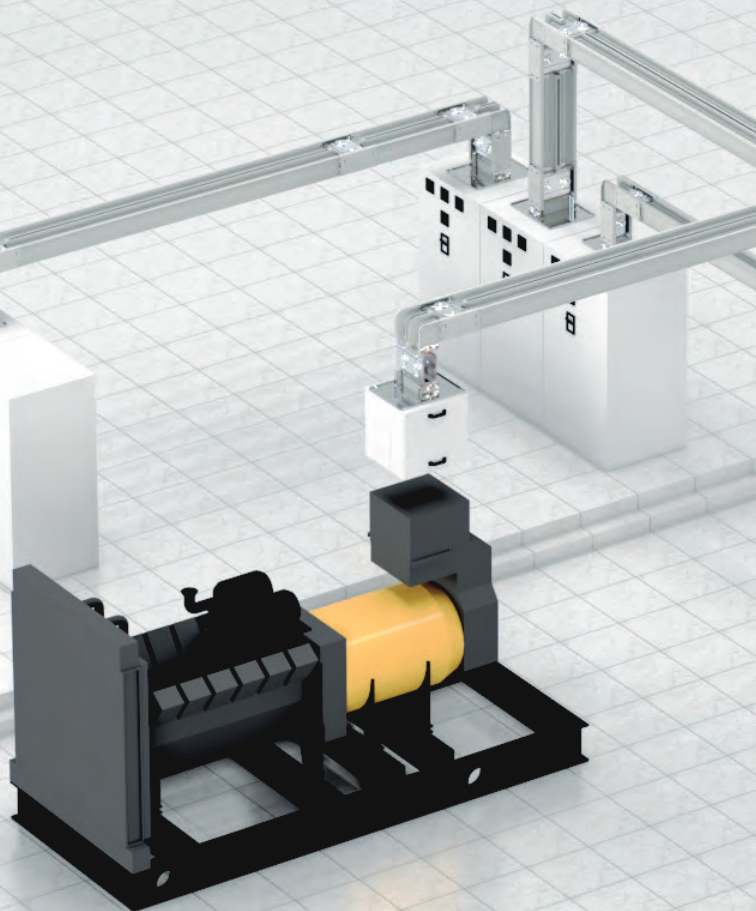
KX Busway is easier to handle and install, saves labor costs and installation time.



Single-bolt connection includes special EAE belleville spring washer, that retains its original contact pressure ensuring proper electrical contact. Offers securer, more reliable and maintenance-free joint.



Specially formulated class B epoxy insulation ensures longer life cycle.



Under Regular Surveillance

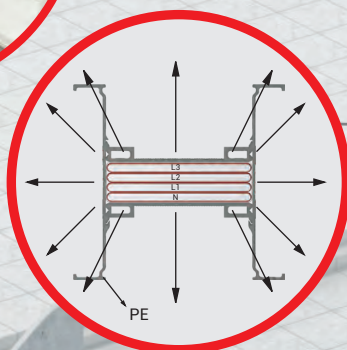
Products and Production are under regular surveillance.



UL Listed



Coated with special paint to achieve highest durability against UV lights and corrosion.



Specially designed compact structure, with no air gap, ensures perfect heat dissipation.



Extraordinary fire resistance performance.

IEC 60331-1
BS 8491
BS 6387
DIN 4102-12
DIN 4102-9
UL 1479



EAE designs the busway systems for each project according to customer requirements, with focus on energy saving and efficiency.

E-LINE KX-III

Distribution & Horizontal Applications



While designing an electrical distribution system with E-Line KX-III a few approximate details will be necessary.

- Location, number, type and approximate ratings of loads.
- Transformer rates and short-circuit capacities, Utilization factor=A,
- System coordination with other distribution system (heat water. etc).
- Determining the route of E-Line KX-III on layout.
If necessary, coordination of E-Line KX-III Busway with E-Line KO-II runs.
- Deciding on suitable hanger types.

Utilization Factor (α)

Utilization factor (α) depends on the type and number of loads. It is usually around 0.7 or lower. The utilization factor of a line that supplies electricity to motors and lighting systems is usually lower than 0.6. It is as low as 0.30 in weld shops of car factories. it can be 1 in lines where only one big load is supplied.

Voltage Drop

For practical voltage drop calculation. necessary values. formula and easy calculation methods are given on the technical characteristics table on pages 6-9.

Rated Current

The current is calculated using the following equation:

$$I_B = \frac{P \cdot \alpha}{\sqrt{3} \cdot U \cdot \cos \varphi}$$

- I_B = Operation current (A)
- P = Installed load (W)
- α = Utilization factor
- U = Supply voltage (V)

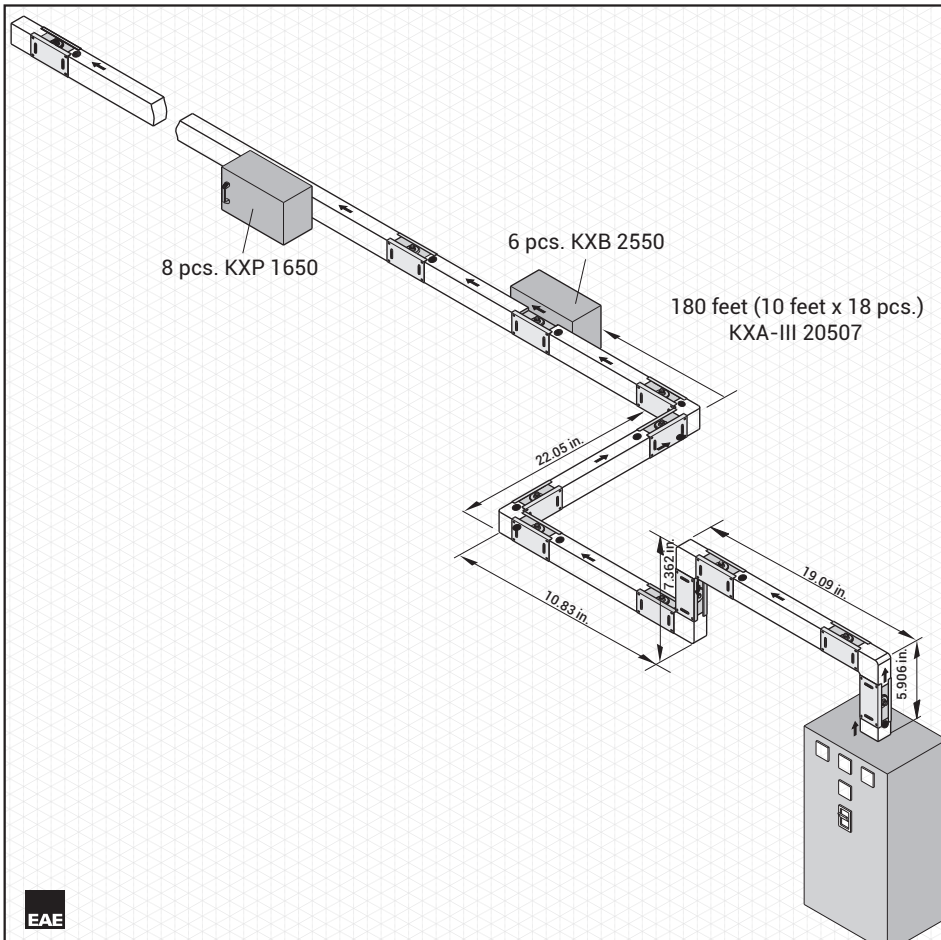
- Busway current rating is chosen as equal to or higher then the calculated I_B current.
- After the voltage drop calculation if the chosen current rate is not convenient. a higher rating is chosen.

Short-Circuit

Tested short-circuit capacities are given on technical characteristics table on pages 6-9.

Busway Installation Plan

Our distributor's project & design departments will help you for preparing the installation plans on request.



Components List			
Item	Components	Quantity	
1	KXA-III 20507 - STD Busway (20 x10 ft)	196 ft.	
2	KXA-III 20507 - D Downwards Elbow	2 pcs.	
3	KXA-III 20507 - R Right Elbow	1 pc.	
4	KXA-III 20507 - U Upwards Elbow	1 pc.	
5	KXA-III 20507 - L Left Elbow	1 pc.	
6	KXA-III 20507 - P11 Panel Connection	1 pc.	
7	KXA-III 20507 - S10 End Closer	1 pc.	
8	KXA-III 20507 - X95 Special Straight Length	1 pc.	
9	KXA-III 20507 - X120 Special Straight Length	1 pc.	
10	KXA-III 20507 - X122 Special Straight Length	1 pc.	
11	KXA-III 20507 - X200 Special Straight Length	1 pc.	
12	KXA-III 20507 - X174 Special Straight Length	1 pc.	
13	KXP 1650 Tap-off Box	8 pcs.	
14	KXB 2550 Tap-off Box	6 pcs.	
Company		: Demir Makine	
Project		: II.OSB	
Project No		: 1128	
Prepared by	Name	: DOGAN SAFRAN	
	Date	: 19.05.2024	
	Signature	:	

Project Sample

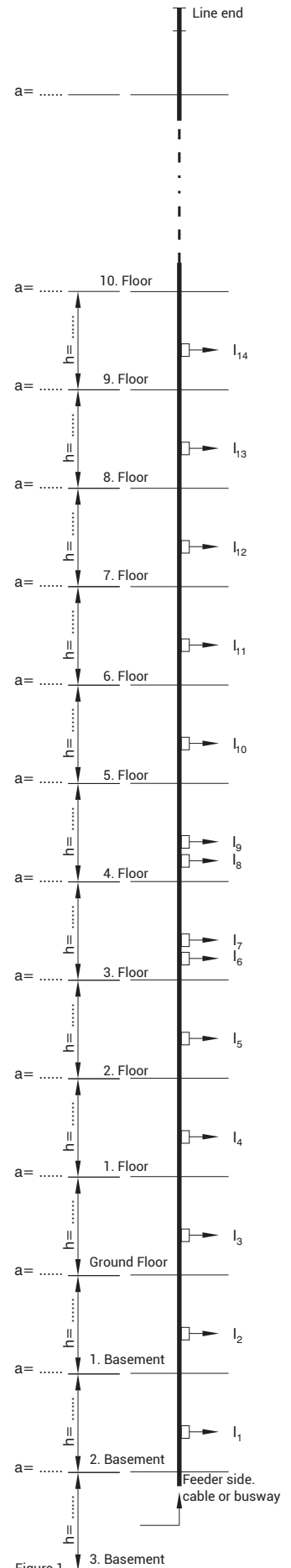
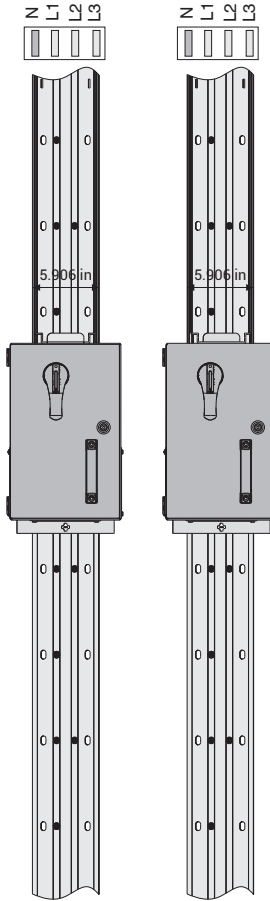
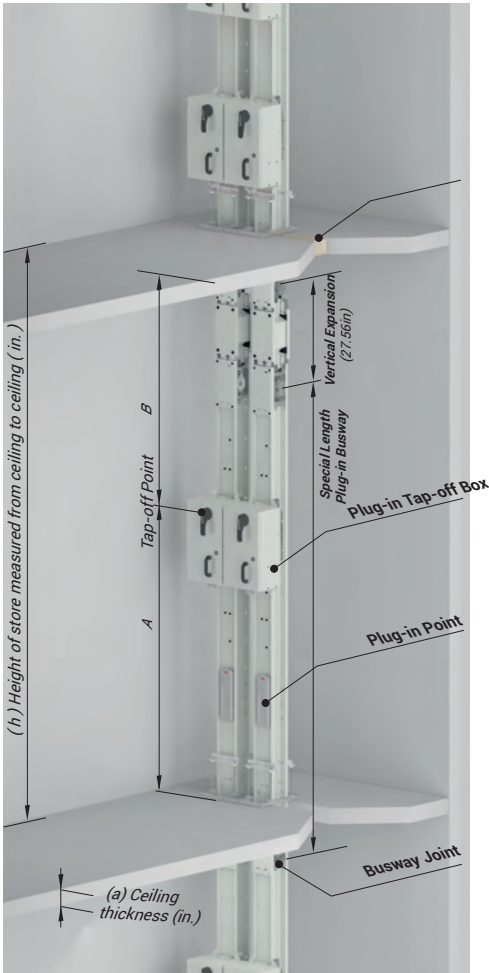
E-LINE KX-III

Riser & Vertical Applications



As each building's structure is different than the other for vertical applications of **E-Line KX-III** special projects has to be designed.

The details on this page briefly explain the necessary information for drawing a vertical application project.

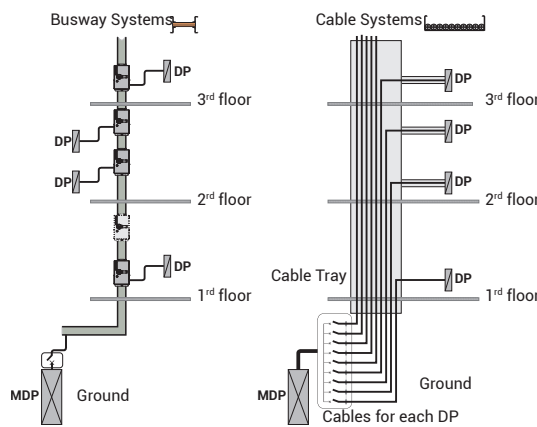


Project Design

The details below should be sent to our Project & Design department.

- Location and dimensions of the floor penetration where busway will be installed.
- Number, height and ceiling thickness of storeys. (a=... h=...)
- Connected load for each storey.
- Supply type of the vertical line (busway or cable).

Please send the information to us by fax or e-mail with a sample drawing in Figure 1.



⚠ The alignments of windows or adjunction points on upper floors may not be the same due to floor heights, slab thickness and product tolerances on multi-way busbars in the high-rise vertical shaft applications. Assembly should continue by making measurements on each floor in order for boxes to be in alignment and in order for adjunction points not to coincide with floor transitions.

- EAE is not responsible for the potential risks that may occur in cases where the products in our catalogue are used outside of the standard phase sequences as shown in the catalogue.

E-LINE KX-III

Technical Characteristics

Aluminium Conductor (Al)

Standards	UL 857				
Rated Operational Voltage	U_i	V	600		
Rated Insulation Voltage	U_e	Vac	600		
Rated Frequency	f	Hz	50-60		
Rated Current	A	400	550	630	800
Busway Code		04	05	06	08
6 Cycle RMS Symmetrical Short Circuit Rating	kA	50	50	50	65
Resistance at Full Load, 35°C Ambient	mΩ/100ft	6.018	4.490	3.283	2.257
Reactance at 60Hz	mΩ/100ft	1.158	1.494	0.864	0.785
Impedance at 60Hz	mΩ/100ft	6.128	4.732	3.395	2.390
Ground Characteristic Under Fault Condition					
Resistance	mΩ/100ft	10.607	9.510	8.138	6.584
Reactance at 60Hz	mΩ/100ft	5.450	5.130	4.280	3.631
Impedance at 60Hz	mΩ/100ft	11.925	10.805	9.195	7.519
SECTIONS					
Conductor Dimensions	inch x inch	0.24x1.2	0.24x1.6	0.24x2.2	0.24x3.1
	mm x mm	6x30	6x40	6x55	6x80
L1.L2.L3.N	inch ²	0.28	0.37	0.51	0.74
	mm ²	180	240	330	480
PE (4 ½ Conductors)	inch ²	0.14	0.19	0.26	0.37
	mm ²	90	120	165	240
PE (5 Conductors)	inch ²	0.28	0.37	0.51	0.74
	mm ²	180	240	330	480
Aluminium Housing Section	inch ²	2.339	2.613	2.771	2.936
	mm ²	1509	1686	1788	1894
Busway Weight (4 Conductors)	lb/ft	4.97	5.3	6.17	7.58
	kg/m	7.4	7.9	9.2	11.3
Busway Weight (5 Conductors)	lb/ft	5.3	5.78	6.85	8.6
	kg/m	7.9	8.6	10.2	12.8
VOLTAGE DROP FULL LOAD 60Hz per 100ft					
Power Factor = 0.4	V/100ft	2.398	3.006	2.291	2.241
Power Factor = 0.5	V/100ft	2.398	3.006	2.291	2.241
Power Factor = 0.6	V/100ft	2.398	3.006	2.291	2.241
Power Factor = 0.7	V/100ft	3.491	4.010	3.181	2.966
Power Factor = 0.8	V/100ft	3.817	4.276	3.432	3.155
Power Factor = 0.9	V/100ft	4.105	4.476	3.639	3.293
Power Factor = 1.0	V/100ft	4.169	4.277	3.582	3.127

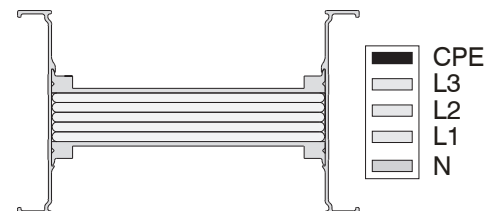
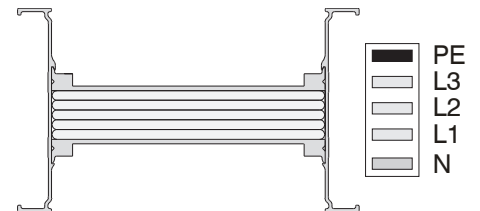
1- For plug-in distributed loads, divide voltage drop values by 2.

2- Actual voltage drop for different lengths and at loadings less than full rated current can be calculated using the formula:

$$VD (actual) = VD (table) \times (actual\ current / rated\ current) \times (actual\ length\ (ft) / 100\ feet)$$

Example: KXA-III 1000A voltage drop at 800A . length 80 feet;(power factor 0.9)

$$VD (actual) = 3.317 \times (800/1000) \times (80/100)=2.122\ V$$



1000	1300	1600	2000	2500	3000	3200	4000	5000
10	13	17	20	25	30	33	40	50
65	65	100	100	125	125	200	150	200
1.900	1.445	1.060	0.784	0.729	0.543	0.451	0.359	0.302
0.466	0.359	0.316	0.216	0.189	0.125	0.176	0.156	0.143
1.956	1.489	1.106	0.813	0.753	0.558	0.484	0.391	0.334
4.864	4.023	3.170	2.621	2.225	2.063	1.981	1.829	1.615
2.346	2.123	1.626	1.211	0.963	0.829	0.852	0.816	0.801
5.400	4.549	3.563	2.887	2.424	2.225	2.156	2.003	1.803
0.24x3.7	0.24x4.92	0.24x6.7	0.24x9.1	2x0.24x4.92	2x0.24x6.7	2x0.24x7.9	2x0.24x9.8	3x0.24x7.9
6x95	6x125	6x170	6x230	2x(6x125)	2x(6x170)	2x(6x200)	2x(6x250)	3x(6x200)
0.88	1.16	1.58	2.14	2.33	3.72	3.72	4.65	5.58
570	750	1020	1380	1500	2400	2400	3000	3600
0.44	0.58	0.79	1.07	1.16	1.86	1.86	2.33	2.79
285	375	510	690	750	1200	1200	1500	1800
0.88	1.16	1.58	2.14	2.33	3.72	3.72	4.65	5.58
570	750	1020	1380	1500	2400	2400	3000	3600
3.094	3.298	3.666	4.132	6.305	6.38	7.514	8.176	11.048
1996	2128	2365	2666	4068	4121	4848	5275	7128
9.0	10.2	13.9	16.8	20.8	24.53	28.8	47.0	44.8
13.4	15.2	20.7	25.0	31.0	36.5	42.9	70	66.8
10.2	11.75	15.97	19.49	23.79	28.89	33.6	54.83	52.41
15.2	17.5	23.8	29.0	35.4	43	50	81.6	78.0
2.051	2.037	1.972	1.767	2.007	1.725	1.888	1.978	2.173
2.051	2.037	1.972	1.767	2.007	1.975	1.888	1.978	2.173
2.051	2.037	1.972	1.767	2.007	2.210	1.888	1.978	2.173
2.880	2.855	2.682	2.435	2.794	2.435	2.446	2.513	2.715
3.117	3.088	2.875	2.622	3.016	2.646	2.585	2.638	2.835
3.317	3.284	3.029	2.773	3.201	2.822	2.679	2.714	2.899
3.291	3.254	2.938	2.716	3.157	3.463	2.500	2.487	2.615

- To determine voltage drop line-to-neutral, multiply line-to-line values by 0.577.
- For 50 Hz, multiply reactance (X) by 0.83 and resistance values do not change.

Voltage drop:

$V_d = \text{load current} \times 1.732(R \cos\theta + X \sin\theta)$ per 100 ft. where $\cos\theta = \text{Power Factor}$

- At voltage drop formula above, metric R and X can be used for voltage drop per meter

For metric conversion R, X, Z values (in Ohms per meters) use below formula by using table values

R(table) x 0.0328
 X(table) x 0.0328
 Z(table) x 0.0328

Example: KXA-III 1000A resistance and reactance at 800A, length 80 inch ;
 $R = 1.900 \times 0.0328 = 0.062$ mohm/ feet
 $X = 0.466 \times 0.0328 = 0.015$ mohm/ feet
 Impedance values are for busway operating at 176 °F (80 °C) temperature.

E-LINE KX-III

Technical Characteristics

Copper Conductor (Cu)

Standards	UL 857				
Rated Operational Voltage	U_i	V	600		
Rated Insulation Voltage	U_e	Vac	600		
Rated Frequency	f	Hz	50-60		
Rated Current	A	630	800	1000	1250
Busway Code		06	08	10	12
6 Cycle RMS Symmetrical Short Circuit Rating	kA	65	65	65	125
Resistance at Full Load, 35°C Ambient	mΩ/100ft	2.813	2.514	1.888	1.426
Reactance at 60Hz	mΩ/100ft	0.942	0.838	0.673	0.524
Impedance at 60Hz	mΩ/100ft	2.967	2.650	2.004	1.519
Ground Characteristic Under Fault Condition					
Resistance	mΩ/100ft	6.401	6.203	5.850	5.230
Reactance at 60Hz	mΩ/100ft	4.140	3.860	3.520	3.199
Impedance at 60Hz	mΩ/100ft	7.623	7.306	6.827	6.131
SECTIONS					
Conductor Dimensions					
	inch x inch	0.24x1.6	0.24x1.8	0.24x2.4	0.24x3.1
	mm x mm	6x40	6x45	6x60	6x80
L1.L2.L3.N					
	inch ²	0.37	0.42	0.56	0.74
	mm ²	240	270	360	480
PE (4 ½ Conductors)					
	inch ²	0.19	0.21	0.28	0.37
	mm ²	120	135	180	240
PE (5 Conductors)					
	inch ²	0.37	0.42	0.56	0.74
	mm ²	240	270	360	480
Aluminium Housing Section					
	inch ²	2.613	2.775	2.799	2.936
	mm ²	1686	1790	1806	1894
Busway Weight (4 Conductors)					
	lb/ft	9.68	10.89	13.44	16.46
	kg/m	14.4	16.2	20.0	24.5
Busway Weight (5 Conductors)					
	lb/ft	11.29	12.7	15.72	19.62
	kg/m	16.8	18.9	23.4	29.2
VOLTAGE DROP FULL LOAD 60Hz per 100ft					
Power Factor = 0.4	V/100ft	2.163	2.450	2.369	2.267
Power Factor = 0.5	V/100ft	2.425	2.747	2.645	2.526
Power Factor = 0.6	V/100ft	2.664	3.019	2.895	2.760
Power Factor = 0.7	V/100ft	2.883	3.268	3.121	2.971
Power Factor = 0.8	V/100ft	3.072	3.484	3.315	3.151
Power Factor = 0.9	V/100ft	3.215	3.646	3.456	3.278
Power Factor = 1.0	V/100ft	3.070	3.484	3.270	3.087

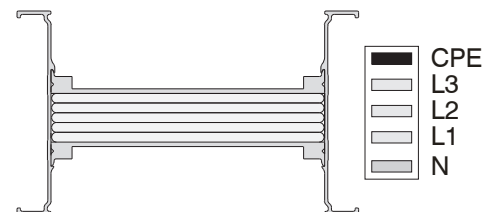
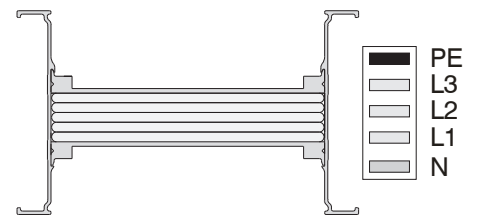
1- For plug-in distributed loads. divide voltage drop values by 2.

2- Actual voltage drop for different lengths and at loadings less than full rated current can be calculated using the formula:

$$VD \text{ (actual)} = VD \text{ (table)} \times (\text{actual current} / \text{rated current}) \times (\text{actual length (ft)} / 100 \text{ feet})$$

Example: KXC-III 1000A voltage drop at 800A . length 80 feet;(power factor 0.9)

$$VD \text{ (actual)} = 3.456 \times (800/1000) \times (80/100)=2.211 \text{ V}$$



1350	1600	2000	2000	2500	3200	4000	5000	6000
14	16	20	22	26	32	40	50	60
125	125	125	200	200	200	200	200	200
1.237	0.901	0.670	0.670	0.606	0.463	0.320	0.274	0.212
0.457	0.362	0.295	0.295	0.237	0.186	0.146	0.116	0.103
1.319	0.971	0.732	0.732	0.651	0.499	0.352	0.298	0.236
4.860	3.620	2.840	2.134	1.958	1.712	1.423	1.310	1.250
3.010	2.650	2.160	1.402	1.206	1.105	0.860	0.648	0.579
5.717	4.486	3.568	2.553	2.300	2.038	1.663	1.462	1.377
0.24x3.7	0.24x5.1	0.24x6.7	2x0.24x3.1	2x0.24x3.7	2x0.24x5.1	2x0.24x7.1	3x0.24x4.1	3x0.24x7.1
6x95	6x125	6x170	2x(6x80)	2x(6x95)	2x(6x125)	2x(6x180)	3x(6x140)	3x(6x180)
0.88	1.16	1.58	1.49	1.77	2.33	3.35	3.91	5.02
570	750	1020	960	1140	1500	2160	2520	3240
0.44	0.58	0.79	0.74	0.88	1.16	1.67	1.95	2.51
285	375	510	480	570	750	1080	1260	1620
0.88	1.16	1.58	1.49	1.77	2.33	3.35	3.91	5.02
570	750	1020	960	1140	1500	2160	2520	3240
3.094	3.298	3.666	5.720	5.805	6.305	7.192	9.821	10.788
1996	2128	2365	3690	3745	4068	4640	6336	6960
18.61	24.33	31.25	33.73	36.82	47.78	65.79	76.60	98.44
27.7	36.2	46.5	50.2	54.8	71.1	97.9	114.0	146.5
22.65	29.43	37.97	39.92	44.42	57.66	80.1	93.2	119.88
33.7	43.8	56.5	59.4	66.1	85.8	119.2	138.7	178.4
2.129	1.912	1.858	1.858	1.984	1.965	1.807	1.863	1.855
2.372	2.117	2.045	2.045	2.201	2.176	1.984	2.056	2.029
2.590	2.301	2.210	2.210	2.395	2.364	2.139	2.227	2.178
2.788	2.464	2.354	2.354	2.570	2.532	2.274	2.378	2.306
2.955	2.599	2.470	2.470	2.715	2.672	2.381	2.501	2.405
3.073	2.689	2.538	2.538	2.813	2.763	2.440	2.578	2.454
2.892	2.497	2.321	2.321	2.624	2.566	2.217	2.373	2.203

Notes

- To determine voltage drop line-to-neutral, multiply line-to-line values by 0.577.
- For 50 Hz, multiply reactance (X) by 0.83 and resistance values do not change.

Voltage drop:

$V_d = \text{load current} \times 1.732(R \cos\theta + X \sin\theta)$ per 100 ft. where $\cos\theta = \text{Power Factor}$

- At voltage drop formula above, metric R and X can be used for voltage drop per meter

For metric conversion R, X, Z values (in Ohms per meters) use below formula by using table values

$R(\text{table}) \times 0.0328$

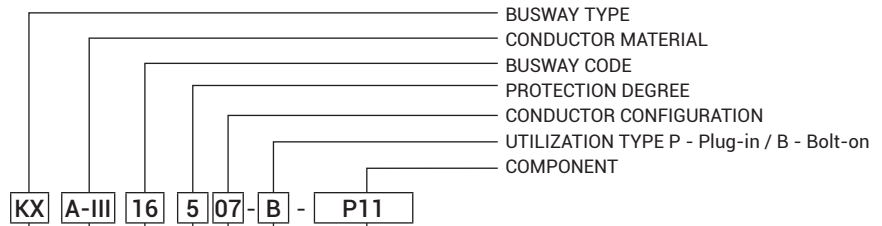
$X(\text{table}) \times 0.0328$

$Z(\text{table}) \times 0.0328$

Example: KXC-III 1000A resistance and reactance at 800A, length 80 inch ;
 $R = 1.888 \times 0.0328 = 0.062$ mohm/ inch
 $X = 0.673 \times 0.0328 = 0.022$ mohm/ inch
 Impedance values are for busway operating at 176 °F (80 °C) temperature.

E-LINE KX-III

Order Code System



Busway Type

Aluminium (Al) A-III
Copper (Cu) C-III

CONDUCTOR MATERIAL

KXA-III Al Conductor		KXC-III Cu Conductor		Conductor Size	
Rated Current	Busway Code	Rated Current	Busway Code	(inch)	(mm)
400	04	-	-	0.24x1.18	6x30
550	05	630	06	0.24x1.57	6x40
-	-	800	08	0.24x1.77	6x45
630	06	-	-	0.24x2.17	6x55
-	-	1000	10	0.24x2.36	6x60
800	08	1250	12	0.24x3.15	6x80
1000	10	1350	14	0.24x3.74	6x95
1300	13	1600	16	0.24x4.92	6x125
1600	17	2000	20	0.24x6.69	6x170
2000	20	-	-	0.24x9.06	6x230
-	-	2000	22	2(0.24x3.15)	2(6x80)
-	-	2500	26	2(0.24x3.74)	2(6x95)
2500	25	3200	32	2(0.24x4.92)	2(6x125)
3000	30	-	-	2(0.24x6.69)	2(6x170)
-	-	4000	40	2(0.24x7.09)	2(6x180)
3200	33	-	-	2(0.24x7.87)	2(6x200)
4000	40	-	-	2(0.24x9.84)	2(6x250)
-	-	5000	50	3(0.24x5.51)	3(6x140)
-	-	6000	60	3(0.24x7.09)	3(6x180)
5000	50	-	-	3(0.24x7.87)	3(6x200)

BUSWAY CODE

IP55 / IP65* 5

PROTECTION DEGREE

*Please call us for IP65 orders. "Only indoor applications"

Number of Conductors	Code	Conductor Configuration								
		L1	L2	L3	N1	PE	1/2 PE	CPE	1/2 CPE	PE (Housing)
3 Conductors	03	✓	✓	✓						✓
4 Conductors	04	✓	✓	✓	✓					✓
4 1/2 Conductors	07	✓	✓	✓	✓		✓			✓
4 1/2 Conductors	08	✓	✓	✓	✓				✓	✓
5 Conductors	05	✓	✓	✓	✓	✓				✓
5 Conductors	09	✓	✓	✓	✓			✓		✓

*TYPE	Utilization Type
(FB) Feeder/Bolt-on	Energy is supplied from the joints.
(SP) Small Plug-in	Energy is supplied from the joints and the plug-in points.

COMPONENTS

Standard Length.....	STD
Special Length.....	X
Upwards Elbow.....	U
Downwards Elbow.....	D
Right Elbow.....	R
Left Elbow.....	L
Left Horizontal Offset.....	LH
Right Horizontal Offset.....	RH
Upwards Vertical Offset.....	UV
Downwards Vertical Offset.....	DV
Upwards Left Combined Offset.....	KUL
Upwards Right Combined Offset.....	KUR
Downwards Left Combined Offset.....	KDL
Downwards Right Combined Offset.....	KDR
Left Upwards Combined Offset.....	KLU
Right Upwards Combined Offset.....	KRU
Left Downwards Combined Offset.....	KLD
Right Downwards Combined Offset.....	KRD
End Closer.....	S
Reduction.....	RD
Left Side Feeder "T".....	TYL
Right Side Feeder "T".....	TYR
Central Feeder "T".....	TO
Horizontal Expansion.....	YDT
Vertical Expansion.....	DDT
Phase Transposition Module.....	FDM
Panel Connection.....	P10
Panel Connection.....	P11
Upwards Panel Connection.....	PU20
Upwards Panel Connection.....	PU21
Downwards Panel Connection.....	PD20
Downwards Panel Connection.....	PD21
Right Panel Connection.....	PR30
Right Panel Connection.....	PR31
Left Panel Connection.....	PL30
Left Panel Connection.....	PL31
Horizontal Feder box.....	B10H
Vertical Feder box.....	B10V
Horizontal Feder box.....	B11H
Vertical Feder box.....	B11V
Central Feeder Box.....	BO
Flexible.....	F

E-LINE KX-III

Standard Straight Length



Bolt-on Standard Straight Length Busway -STD

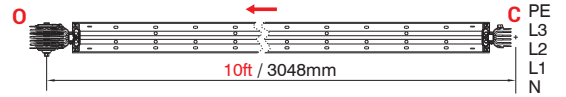


Sample Order:

KXA-III 25507-FB-STD
2500 A, Aluminium, Feeder,
IP 55, 4 1/2 conductors
Length = 10 ft / 3048mm

Applications:

- As feeder or sub-feeder line



Plug-in Standard Straight Length Busway -STD



Sample Order:

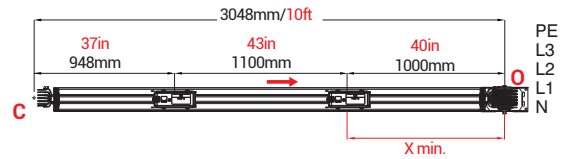
KXC-III 12507-SP-STD
1250 A, Copper, S-Plug.
IP 55, 4 1/2 conductors

Note:

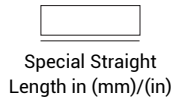
Xmin must be min. 317mm (12.48in)

Note:

There are two plug-in tapoff points on a 10 ft standard lengths. The plug-in tapoff points are both sides of the busway. Should you require additional plug-in tap off point please contact EAE .



Special Straight Length -X

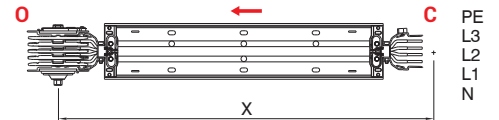


Sample Order:

KXC-III 25507-FB-X-1470
2500 A, Copper, Feeder,
IP 55, 4 1/2 conductors. Special
Length = **57.87in** / 1470 mm

Note:

Feeder Minimum Length = **13.78in** / 350mm
Plug-in Minimum Length = **39.37in** / 1000mm



Plug-in Straight Length -X



Sample Order:

KXC-III 25507-SB-X-1470
2500 A, Copper, S-Plug.
IP 55, 4 1/2 conductors. Special
Length = **57.87in** / 1470 mm

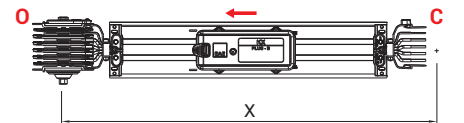


Table For Outer Dimension of Busways

A	Rated Current (A)																				
	400	550	-	630	-	800	1000	1300	1600	2000	-	-	2500	3000	-	3200	4000	-	-	5000	
KXA-III Al Conductors	04	05	-	06	-	08	10	13	17	20	-	-	25	30	-	33	40	-	-	50	
KXC-III Cu Conductors	06	08	-	10	12	14	16	20	-	2000	2500	3200	-	4000	-	-	5000	6000	-		
	06	08	-	10	12	14	16	20	-	22	26	32	-	40	-	-	50	60	-		
A	(inch)	3.25	3.58	3.78	4.17	4.37	5.16	5.75	6.93	8.70	11.06	9.92	11.10	13.46	17	17.80	19.37	23.31	21.73	26.46	28.82
	(mm)	82.5	91	96	106	111	131	146	176	221	281	252	282	342	432	452	492	592	552	672	732

Important Notice for the Tap-off box use;

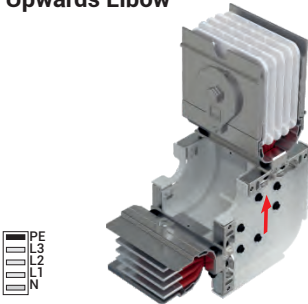
- KXA-III 400A, 550A, 630A, KXC-III 630A and 800A busway range may have plug-in windows at one side only. It is highly recommended to consider these points in your project designs.

E-LINE KX-III

Elbow

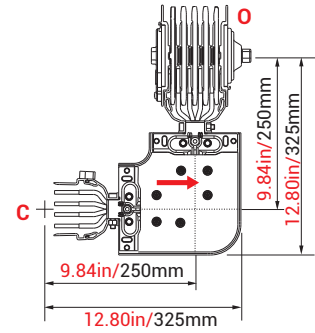


Upwards Elbow -U

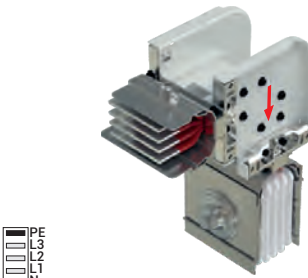


Sample Order:

KXC-III 32507-B-U
3300 A, Copper, Bolt-on,
IP 55, 4 1/2 conductors

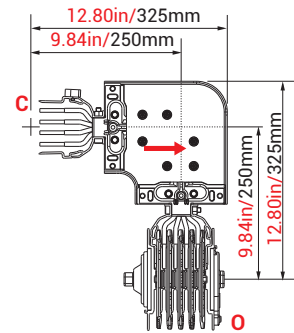


Downwards Elbow -D

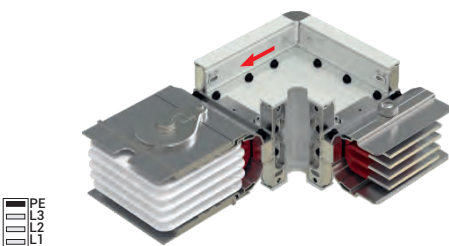


Sample Order:

KXC-III 32507-B-D
3300 A, Copper, Bolt-on,
IP 55, 4 1/2 conductors

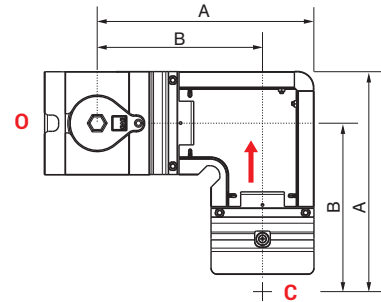


Left Elbow -L

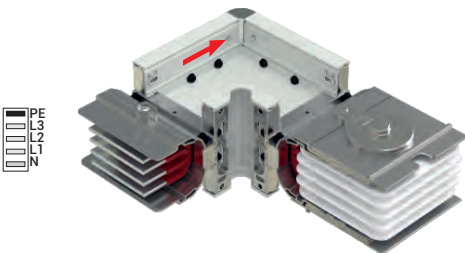


Sample Order:

KXC-III 20507-B-L
2000 A, Copper, Bolt-on,
IP 55, 4 1/2 conductors

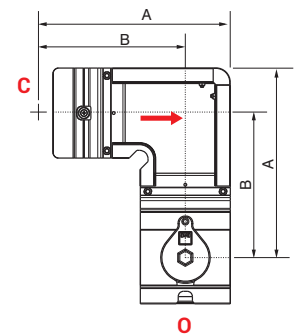


Right Elbow -R



Sample Order:

KXA-III 20507-B-R
2000 A, Aluminium, Bolt-on,
IP 55, 4 1/2 conductors



- Special left or right elbows between 90° and 180° can be manufactured upon request.
- The dimensions given above are minimum values.
- Please call us for non-standard components.

KXA-III Al Conductors	Rated Current (A)	400	550	-	630	-	800	1000	1300	1600	2000	-	-	2500	3000	-	3200	4000	-	-	5000
	Busway Code	04	05	-	06	-	08	10	13	17	20	-	-	25	30	-	33	40	-	-	50
KXC-III Cu Conductors	Rated Current (A)	-	630	800	-	1000	1250	1350	1600	2000	-	2000	2500	3200	-	4000	-	-	5000	6000	-
	Busway Code	-	06	08	-	10	12	14	16	20	-	22	26	32	-	40	-	-	50	60	-
A	(inch)	10.12	10.51	10.71	11.10	11.30	12.08	12.68	13.86	15.63	17.99	16.81	17.99	20.35	23.89	24.69	26.26	30.20	28.62	33.35	35.71
	(mm)	257	267	272	282	287	307	322	352	397	457	427	457	517	607	627	667	767	727	847	907
B	(inch)	8.54	8.74	8.82	9.02	9.13	9.49	9.80	10.39	11.26	12.44	11.85	12.44	13.62	15.39	15.79	16.57	18.54	17.76	20.12	21.30
	(mm)	217	222	224	229	232	241	249	264	286	316	301	316	346	391	401	421	471	451	511	541

E-LINE KX-III

Elbow



Upwards Vertical Offset

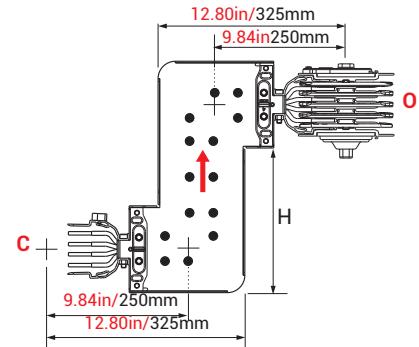
-UV



Sample Order:

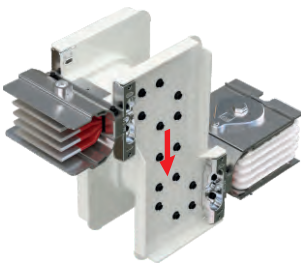
KXA-III 20505-B-UV
2000 A, Aluminium, Bolt-on,
IP 55, 5 conductors

Note:
H=Offset(*)=min:9.84in/250mm
max:19.29in/490mm



Downwards Vertical Offset

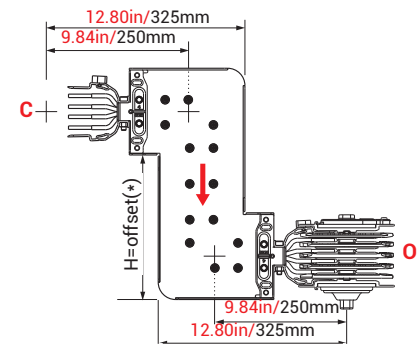
-DV



Sample Order:

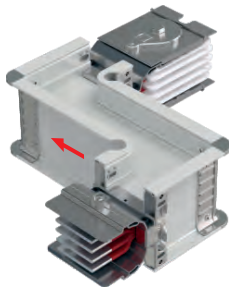
KXA-III 20505-B-DV
2000 A, Aluminium, Bolt-on,
IP 55, 5 conductors

Note:
H=Offset(*)=min:9.84in/250mm
max:19.29in/490mm



Left Horizontal Offset

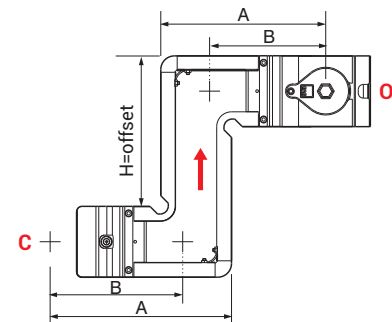
-LH



Sample Order:

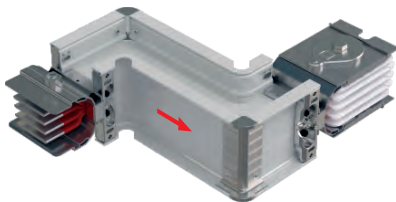
KXC-III 32507-B-LH
3300 A, Copper, Bolt-on,
IP 55, 4 1/2 conductors

Note:
H=Offset=min:11.02in/280mm
max: *Please see table.
Used if two horizontal elbows
can not fit.



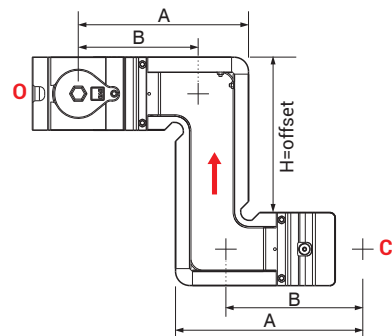
Right Horizontal Offset

-RH



Sample Order:

KXC-III 32507-B-RH
3300 A, Copper, Bolt-on,
IP 55, 4 1/2 conductors



- Special left or right elbows between 90° and 180° can be manufactured upon request.
- The dimensions given above are minimum values.
- Please call us for non-standard components.

KXA-III Al Conductors	Rated Current (A)	400	550	-	630	-	800	1000	1300	1600	2000	-	-	2500	3000	-	3200	4000	-	-	5000
	Busway Code	04	05	-	06	-	08	10	13	17	20	-	-	25	30	-	33	40	-	-	50
KXC-III Cu Conductors	Rated Current (A)	-	630	800	-	1000	1250	1350	1600	2000	-	2000	2500	3200	-	4000	-	-	5000	6000	-
	Busway Code	-	06	08	-	10	12	14	16	20	-	22	26	32	-	40	-	-	50	60	-
A	(inch)	10.12	10.51	10.71	11.10	11.30	12.08	12.68	13.86	15.63	17.99	16.81	17.99	20.35	23.89	24.69	26.26	30.20	28.62	33.35	35.71
	(mm)	257	267	272	282	287	307	322	352	397	457	427	457	517	607	627	667	767	727	847	907
B	(inch)	8.54	8.74	8.82	9.02	9.13	9.49	9.80	10.39	11.26	12.44	11.85	12.44	13.62	15.39	15.79	16.57	18.54	17.76	20.12	21.30
	(mm)	217	222	224	229	232	241	249	264	286	316	301	316	346	391	401	421	471	451	511	541
H=Offset _{max}	(inch)	17.00	17.40	17.60	17.99	18.19	18.98	19.57	20.75	22.52	24.88	23.70	24.88	27.24	30.78	31.57	33.15	37.48	41.42	46.14	48.50
	(mm)	432	442	447	457	462	482	497	527	572	632	602	632	692	782	802	842	952	1052	1172	1232

E-LINE KX-III

Elbow



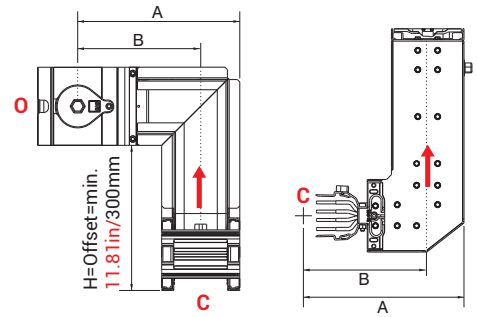
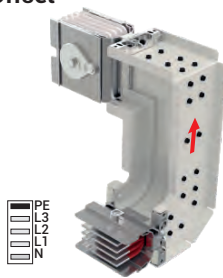
Upwards Left Combined Offset

-K U L

Sample Order:

KXC-III 32507-B-KUL
3300 A, Copper, Bolt-on,
IP 55, 4 1/2 conductors

Note:
H=Offset= min. 11.81 in/300mm



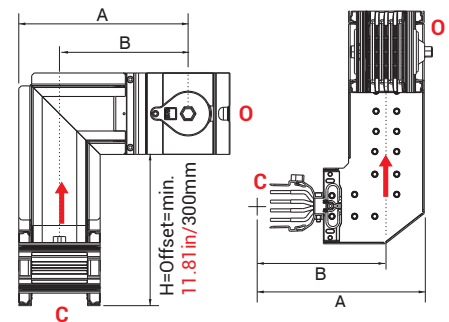
Upwards Right Combined Offset

-K U R

Sample Order:

KXA-III 33507-B-KUR
3200 A, Aluminium, Bolt-on,
IP 55, 4 1/2 conductors

Note:
H=Offset= min. 11.81 in/300mm



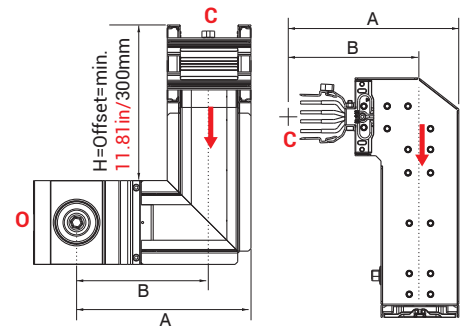
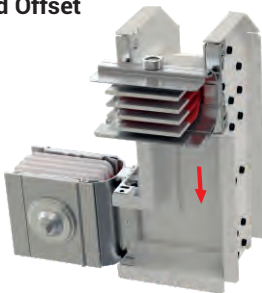
Downwards Left Combined Offset

-K D L

Sample Order:

KXC-III 32507-B-KDL
3300 A, Copper, Bolt-on,
IP 55, 4 1/2 conductors

Note:
H=Offset= min. 11.81 in/300mm



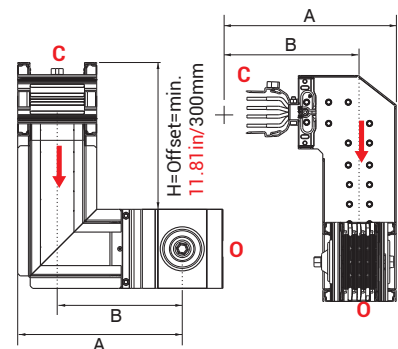
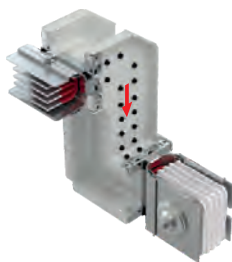
Downwards Right Combined Offset

-K D R

Sample Order:

KXA-III 33507-B-KDR
3200 A, Aluminium, Bolt-on,
IP 55, 4 1/2 conductors

Note:
H=Offset= min. 11.81 in/300mm



- Special left or right elbows between 90° and 180° can be manufactured upon request.
- The dimensions given above are minimum values.

KXA-III Al Conductors	Rated Current (A)	400	550	-	630	-	800	1000	1300	1600	2000	-	-	2500	3000	-	3200	4000	-	-	5000
	Busway Code	04	05	-	06	-	08	10	13	17	20	-	-	25	30	-	33	40	-	-	50
KXC-III Cu Conductors	Rated Current (A)	-	630	800	-	1000	1250	1350	1600	2000	-	2000	2500	3200	-	4000	-	-	5000	6000	-
	Busway Code	-	06	08	-	10	12	14	16	20	-	22	26	32	-	40	-	-	50	60	-
A	(inch)	10.12	10.51	10.71	11.10	11.30	12.08	12.68	13.86	15.63	17.99	16.81	17.99	20.35	23.89	24.69	26.26	30.20	28.62	33.35	35.71
	(mm)	257	267	272	282	287	307	322	352	397	457	427	457	517	607	627	667	767	727	847	907
B	(inch)	8.54	8.74	8.82	9.02	9.13	9.49	9.80	10.39	11.26	12.44	11.85	12.44	13.62	15.39	15.79	16.57	18.54	17.76	20.12	21.30
	(mm)	217	222	224	229	232	241	249	264	286	316	301	316	346	391	401	421	471	451	511	541
H=Offset _{max}	(inch)	17.00	17.40	17.60	17.99	18.19	18.98	19.57	20.75	22.52	24.88	23.70	24.88	27.24	30.78	31.57	33.15	37.48	41.42	46.14	48.50
	(mm)	432	442	447	457	462	482	497	527	572	632	602	632	692	782	802	842	952	1052	1172	1232

E-LINE KX-III

Elbow



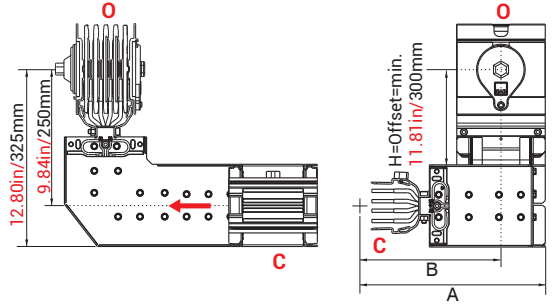
Left Upwards Combined Offset

-K L U

Sample Order:

KXA-III 33507-B-KLU
3200 A, Aluminium, Bolt-on,
IP 55, 4 1/2 conductors

Note:
H=Offset=min. 11.81in/300mm



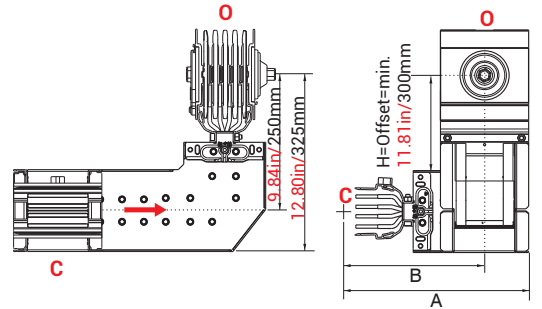
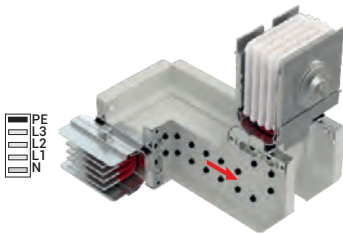
Right Upwards Combined Offset

-K R U

Sample Order:

KXC-III 32505-B-KRU
3300 A, Aluminium, Bolt-on,
IP 55, 5 conductors

Note:
H=Offset=min. 11.81in/300mm



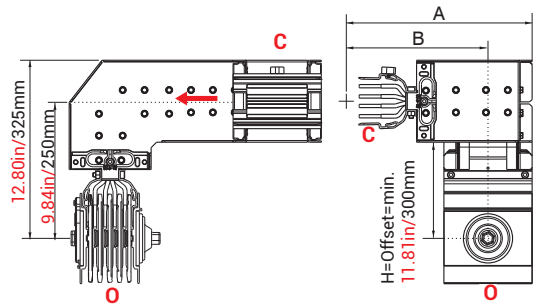
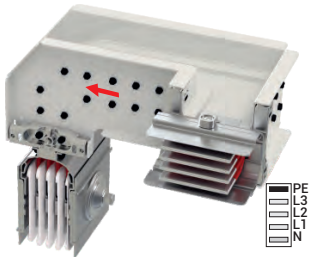
Left Downwards Combined Offset

-K L D

Sample Order:

KXA-III 33505-B-KLD
3200 A, Aluminium, Bolt-on,
IP 55, 5 conductors

Note:
H=Offset=min. 11.81in/300mm



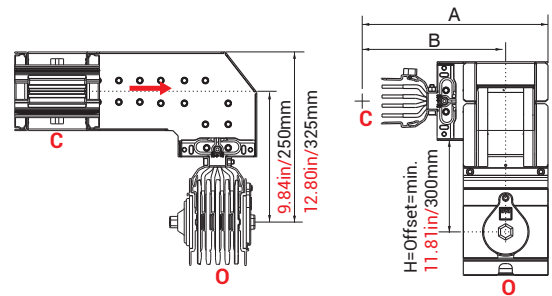
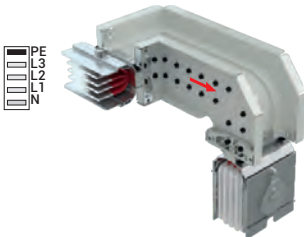
Right Downwards Combined Offset

-K R D

Sample Order:

KXC-III 32507-B-KRD
3300 A, Copper, Bolt-on,
IP 55, 4 1/2 conductors

Note:
H=Offset=min. 11.81in/300mm



- Special left or right elbows between 90° and 180° can be manufactured upon request.
- The dimensions given above are minimum values.

KXA-III Al Conductors	Rated Current (A)	400	550	-	630	-	800	1000	1300	1600	2000	-	-	2500	3000	-	3200	4000	-	-	5000
	Busway Code	04	05	-	06	-	08	10	13	17	20	-	-	25	30	-	33	40	-	-	50
KXC-III Cu Conductors	Rated Current (A)	-	630	800	-	1000	1250	1350	1600	2000	-	2000	2500	3200	-	4000	-	-	5000	6000	-
	Busway Code	-	06	08	-	10	12	14	16	20	-	22	26	32	-	40	-	-	50	60	-
A	(inch)	10.12	10.51	10.71	11.10	11.30	12.08	12.68	13.86	15.63	17.99	16.81	17.99	20.35	23.89	24.69	26.26	30.20	28.62	33.35	35.71
	(mm)	257	267	272	282	287	307	322	352	397	457	427	457	517	607	627	667	767	727	847	907
B	(inch)	8.54	8.74	8.82	9.02	9.13	9.49	9.80	10.39	11.26	12.44	11.85	12.44	13.62	15.39	15.79	16.57	18.54	17.76	20.12	21.30
	(mm)	217	222	224	229	232	241	249	264	286	316	301	316	346	391	401	421	471	451	511	541
H=Offset _{max}	(inch)	17.00	17.40	17.60	17.99	18.19	18.98	19.57	20.75	22.52	24.88	23.70	24.88	27.24	30.78	31.57	33.15	37.48	41.42	46.14	48.50
	(mm)	432	442	447	457	462	482	497	527	572	632	602	632	692	782	802	842	952	1052	1172	1232

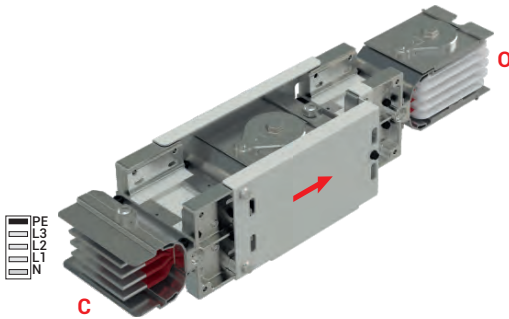
E-LINE KX-III

Standard Components



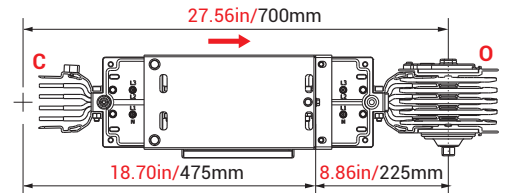
Reduction

-RD Reduced Busway Current



Sample Order:

KXA-III 20507-B-RD17
2000A / 1600A, Aluminium,
Bolt-on, IP 55, 4 1/2 conductors



Is used to change the busway cross section.

Note:

Decisions and selection of reduction module and protection on lower side is under the customer's responsibility.

Reducers Table

KXA-III Al conductors		Reduced Busway Current										
Rated Current	400	550	630	800	1000	1300	1600	2000	2500	3000	3200	4000
550	✓	-	-	-	-	-	-	-	-	-	-	-
630	✓	✓	-	-	-	-	-	-	-	-	-	-
800	-	✓	✓	-	-	-	-	-	-	-	-	-
1000	-	-	✓	✓	-	-	-	-	-	-	-	-
1300	-	-	-	✓	✓	-	-	-	-	-	-	-
1600	-	-	-	-	✓	✓	-	-	-	-	-	-
2000	-	-	-	-	-	✓	✓	-	-	-	-	-
2500	-	-	-	-	-	-	✓	✓	-	-	-	-
3000	-	-	-	-	-	-	-	✓	✓	-	-	-
3200	-	-	-	-	-	-	-	-	✓	✓	-	-
4000	-	-	-	-	-	-	-	-	-	✓	✓	-
5000	-	-	-	-	-	-	-	-	-	-	✓	✓

KXC-III Cu conductors		Reduced Busway Current										
Rated Current	630	800	1000	1250	1350	1600	2000	2000	2500	3200	4000	5000
800	✓	-	-	-	-	-	-	-	-	-	-	-
1000	✓	✓	-	-	-	-	-	-	-	-	-	-
1250	-	✓	✓	-	-	-	-	-	-	-	-	-
1350	-	-	✓	✓	-	-	-	-	-	-	-	-
1600	-	-	-	✓	✓	-	-	-	-	-	-	-
2000	-	-	-	-	✓	✓	-	-	-	-	-	-
2000	-	-	-	-	-	✓	-	-	-	-	-	-
2500	-	-	-	-	-	-	✓	✓	-	-	-	-
3200	-	-	-	-	-	-	-	✓	✓	-	-	-
4000	-	-	-	-	-	-	-	-	✓	✓	-	-
5000	-	-	-	-	-	-	-	-	-	✓	✓	-
6000	-	-	-	-	-	-	-	-	-	-	-	-

■ See table below for ratings and busway codes.

■ The dimensions given above are minimum values.

■ Please call us for non-standard components.

E-LINE KX-III

Standart Modules

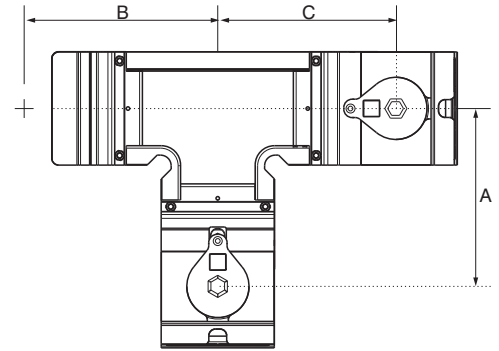
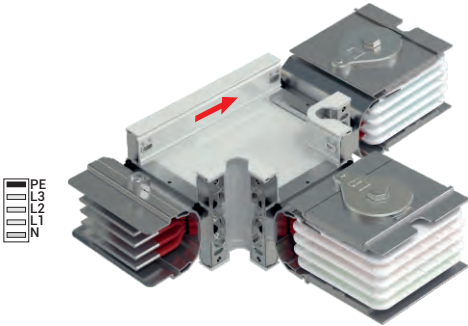


Right Side Feeder "T"

-T Y R

Sample Order:

KXC-III 25507-B-TYR
2500 A, Copper, Bolt-on,
IP 55, 4 1/2 conductors

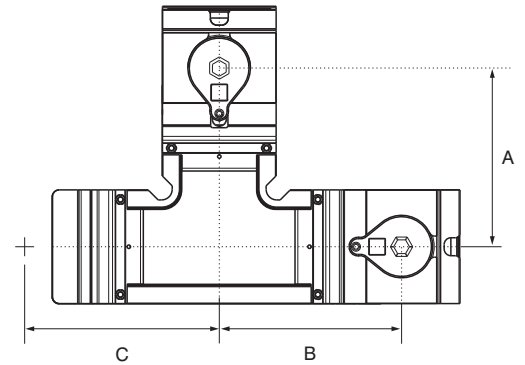
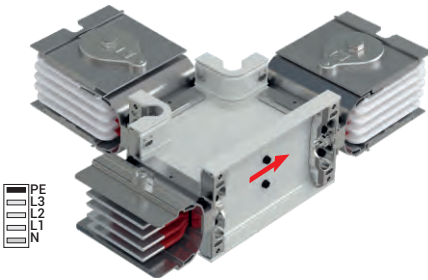


Left Side Feeder "T"

-T Y L

Sample Order:

KXA-III 25507-B-TYL
2500 A, Aluminium, Bolt-on,
IP 55, 4 1/2 conductors

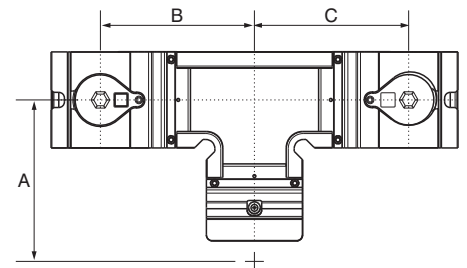
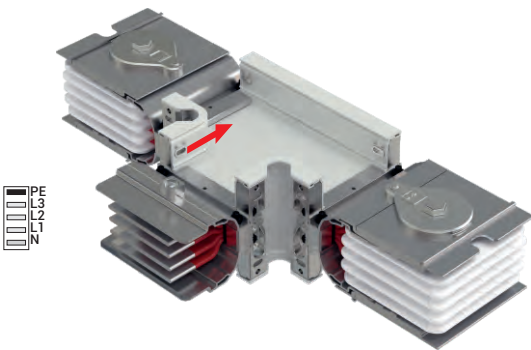


Central Feeder "T"

-T O

Sample Order:

KXC-III 32507-B-TO
3300 A, Copper, Bolt-on,
IP 55, 4 1/2 conductors



• The dimensions specified below are minimum values. Maximum values are equal to the minimum values + 349 mm / 13.74 inch.

• Please call us for non-standard components.

KXA-III Al Conductors	Rated Current (A)	400	550	-	630	-	800	1000	1300	1600	2000	-	-	2500	3000	-	3200	4000	-	-	5000
	Busway Code	04	05	-	06	-	08	10	13	17	20	-	-	25	30	-	33	40	-	-	50
KXC-III Cu Conductors	Rated Current (A)	-	630	800	-	1000	1250	1350	1600	2000	-	2000	2500	3200	-	4000	-	-	5000	6000	-
	Busway Code	-	06	08	-	10	12	14	16	20	-	22	26	32	-	40	-	-	50	60	-
A	(inch)	8.50	8.70	8.82	9.02	9.13	9.49	9.80	10.39	11.26	12.44	11.85	12.44	13.62	15.39	15.79	16.57	18.54	17.76	20.12	21.30
	(mm)	216	221	224	229	232	241	249	264	286	316	301	316	346	391	401	421	471	451	511	541
B	(inch)	8.50	8.70	8.82	9.02	9.13	9.49	9.80	10.39	11.26	12.44	11.85	12.44	13.62	15.39	15.79	16.57	18.54	17.76	20.12	21.30
	(mm)	216	221	224	229	232	241	249	264	286	316	301	316	346	391	401	421	471	451	511	541
C	(inch)	8.50	8.70	8.82	9.02	9.13	18.98	9.80	10.39	11.26	12.44	11.85	12.44	13.62	15.39	15.79	16.57	18.54	17.76	20.12	21.30
	(mm)	216	221	224	229	232	241	249	264	286	316	301	316	346	391	401	421	471	451	511	541

E-LINE KX-III

Standart Modules

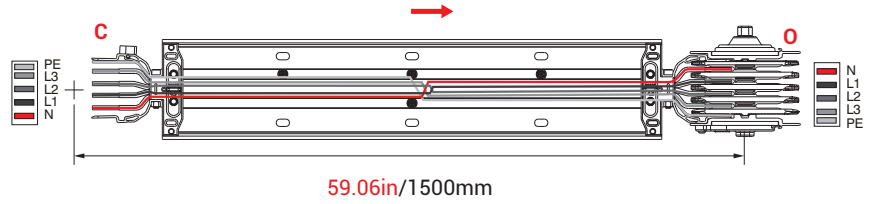


Phase Transposition Module

- F D M

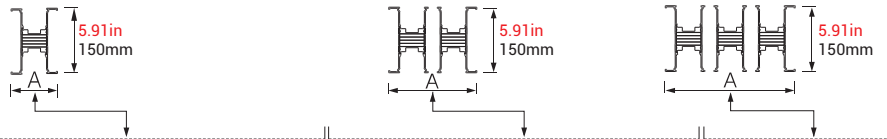
Sample Order:

KXA-III 25507-B-FDM
2500A, Aluminium, Bolt-on,
IP 55, 4 1/2 conductors

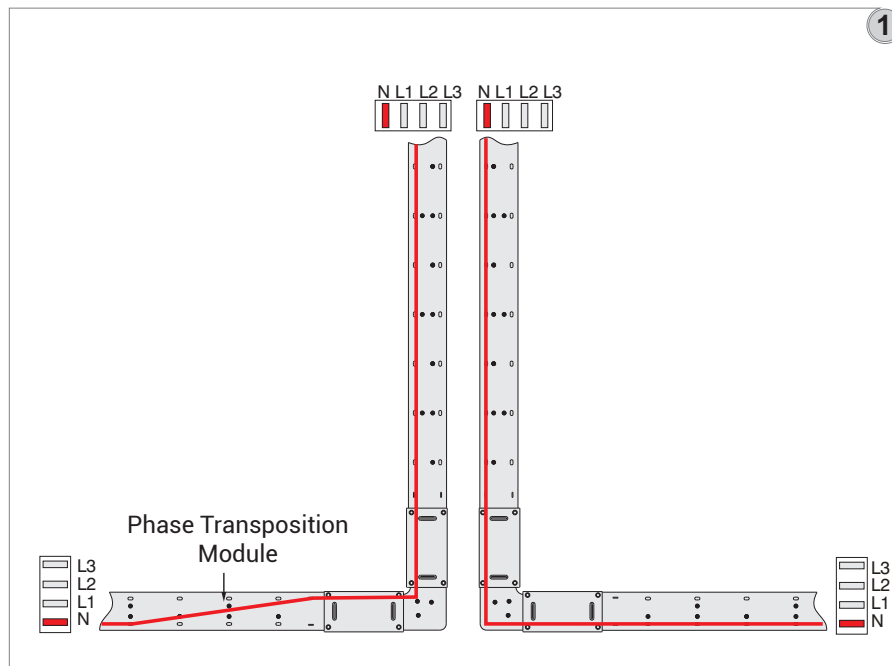


They used for transposition of phase sequence.

FDM Dimension Table



KXA-III Al Conductors	Rated Current (A)	400	550	-	630	-	800	1000	1300	1600	2000	-	-	2500	3000	-	3200	4000	-	-	5000
	Busway Code	04	05	-	06	-	08	10	13	17	20	-	-	25	30	-	33	40	-	-	50
KXC-III Cu Conductors	Rated Current (A)	-	630	800	-	1000	1250	1350	1600	2000	-	2000	2500	3200	-	4000	-	-	5000	6000	-
	Busway Code	-	06	08	-	10	12	14	16	20	-	22	26	32	-	40	-	-	50	60	-
A	(inch)	3.25	3.58	3.78	4.17	4.37	5.16	5.75	6.93	8.70	11.06	9.92	11.10	13.46	17.00	17.80	19.37	23.31	21.73	26.46	28.82
	(mm)	82.5	91	96	106	111	131	146	176	221	281	252	282	342	432	452	492	592	552	672	732



1- The neutral bar of KX busway shall be at the bottom for horizontal busway lines and on the left for vertical busway lines.(Figure 1)

2- In order to maintain the neutral bar at the bottom and in the vertical busway on the left, it is required to use the phase transposition module. (Figure 1)

E-LINE KX-III

Expansions



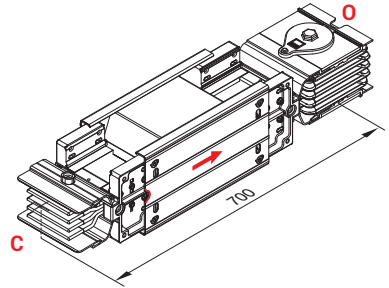
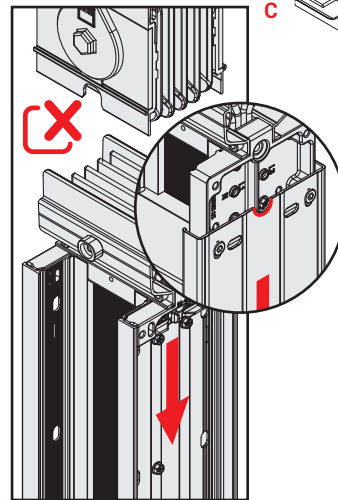
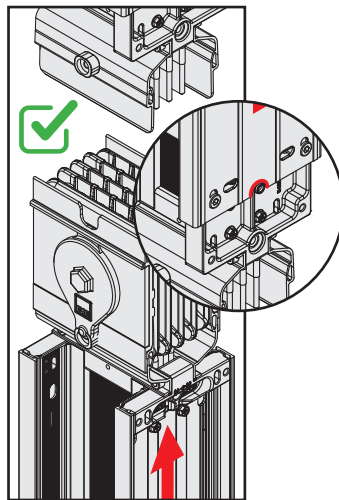
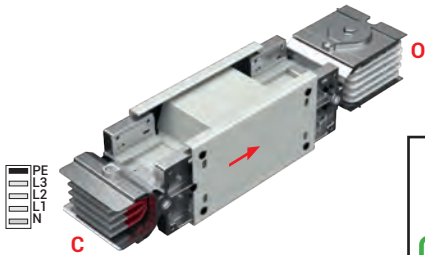
Vertical Expansion

-D D T

Sample Order:

KXC-III 20507-B-DDT
2000A, Copper, Bolt-on,
IP 55, 4 1/2 conductors

One vertical expansion unit is advised to be used at every floor between fixed support points. Used for vertical applications in multi storey buildings.



Horizontal Expansion

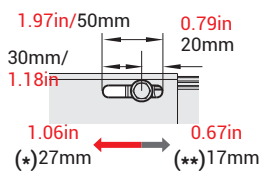
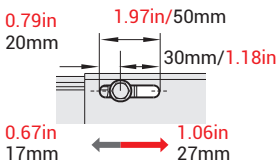
-Y D T

Sample Order:

KXA-III 25507-B-YDT
2500A, Aluminium, Bolt-on,
IP 55, 4 1/2 conductors

Attention!

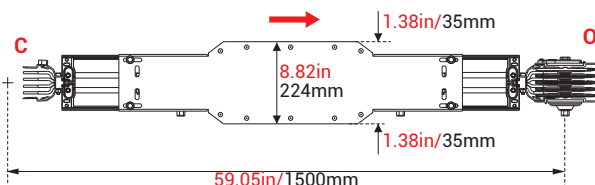
The total length of the module should be adjusted to **59.05in/1500mm**. after installation. Used at every **131ft/40m** in long horizontal straight lines and building expansion points.



Note:

- 1) Horizontal expansion joint should be utilised if busway line is crossing to adjacent through building expansion joints.
- 2) This module is used on the long busway line (>246ft/>75m) where line is ended by end closure and is not fixed on the support rigidly.
- 3) The horizontal expansion joint capacity is
 (*) **2.12in/54mm** for **the internal** movement span.
 The horizontal expansion joint capacity is
 (**) **1.34in/34mm** for **the external** movement span.

EAE requests to be consulted during design stage.



E-LINE KX-III

End Closers



End Closer

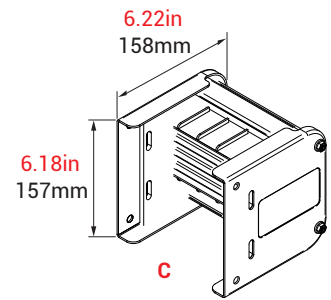
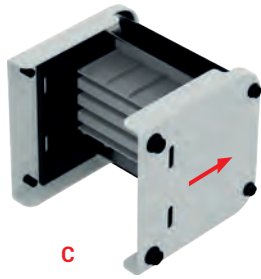
- S

Sample Order:

KX-III 205A/255C-B-S
2000 A, Aluminium, 2500 A, Copper
Bolt-on, IP 55, 4.5/5 conductors

End Closer

Is used to close the end of busway run.



KXA-III Al Conductors		KXC-III Cu Conductors		L1, L2, L3, N + Housing	04
				L1, L2, L3, N, ½ PE + Housing	07
				L1, L2, L3, N, PE + Housing	05
Rated Current (A)	Busway Code	Rated Current (A)	Busway Code	Dimension	Order Code
400	04	-	-	6x30	3066131
550	05	630	06	6x40	3016698
-	-	800	08	6x45	3141273
630	06	-	-	6x55	3016699
-	-	1000	10	6x60	3142393
800	08	1250	12	6x80	3016701
1000	10	1350	14	6x95	3085740
1300	13	1600	16	6x125	3016703
1600	17	2000	20	6x170	3142394
2000	20	-	-	6x230	3135702
-	-	2000	22	2(6x80)	3016708
-	-	2500	26	2(6x95)	3135702
2500	25	3200	32	2(6x125)	3016711
3000	30	-	-	2(6x170)	3142439
-	-	4000	40	2(6x180)	3188181
3200	33	-	-	2(6x200)	3113536
4000	40	-	-	2(6x250)	3127359
-	-	5000	50	3(6x140)	3256719
-	-	6000	60	3(6x180)	3256720
5000	50	-	-	3(6x200)	3113537

Note:

-S end closer modules should be used for the busways with 04, 07, 05 conductor configuration shown table.

End Closer

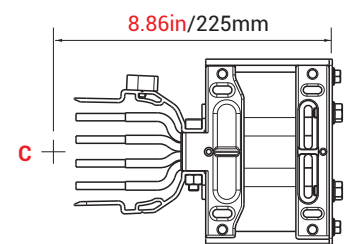
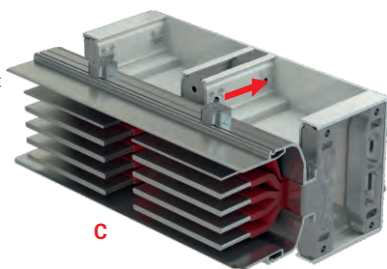
- S10

Sample Order:

KXC-III 63505-B-S10
6300 A, Copper, Bolt-on,
IP 55, 5 conductors

Note: S10 or S11 modules should be used as end closer for the busways with all conductor configuration

- (L1, L2, L3, PE (Housing))= 03
- (L1, L2, L3, N) = 04
- (L1, L2, L3, N, ½ PE) = 07
- (L1, L2, L3, N, PE) = 05
- (L1, L2, L3, N, ½ CPE) = 08
- (L1, L2, L3, N, CPE) = 09

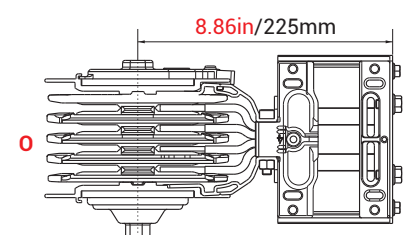
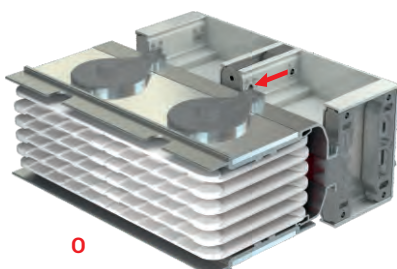


End Closer

- S11

Sample Order:

KXA-III 50505-B-S11
5000 A, Aluminium, Bolt-on,
IP 55, 5 conductors



■ Please call us for non-standard components.

■ The dimensions given above are minimum values.

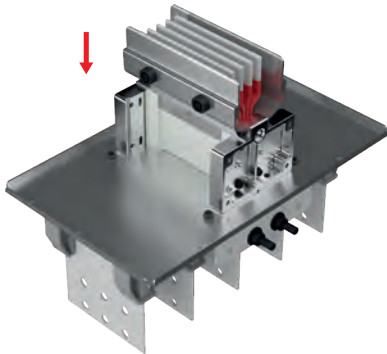
E-LINE KX-III

Panel Connections

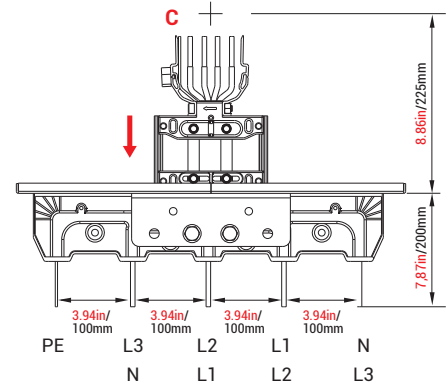


Panel Connection - P 1 0

Panel Feeder

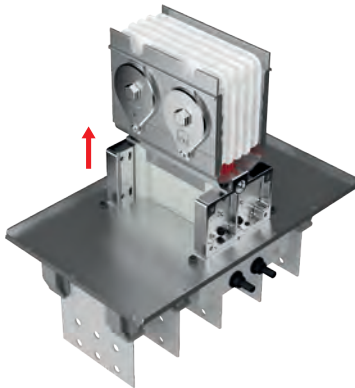


Sample Order:
KXC-III 25507-B-P10
 2500 A, Copper, Bolt-on,
 IP 55, 4 1/2 conductors
 for Busway Feeder

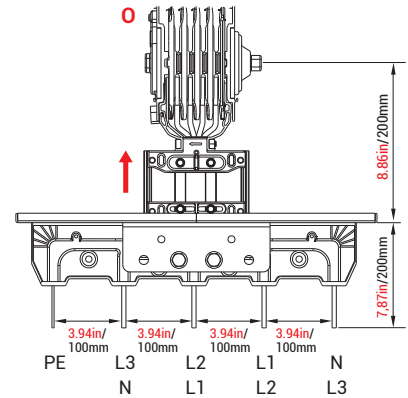


Panel Connection - P 1 1

Busway Feeder

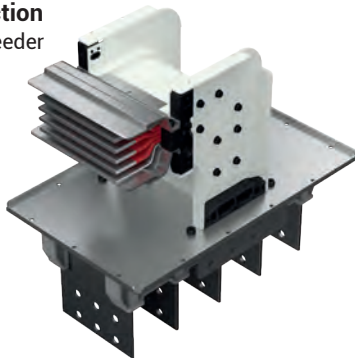


Sample Order:
KXC-III 25507-B-P11
 2500 A, Copper, Bolt-on,
 IP 55, 4 1/2 conductors
 for Busway Feeder

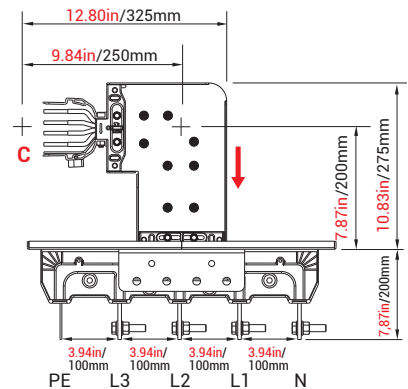


Upwards Panel Connection - P U 2 0

Panel Feeder

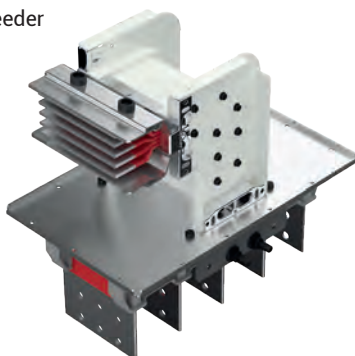


Sample Order:
KXC-III 36507-B-PU20
 3600 A, Copper, Bolt-on,
 IP 55, 4 1/2 conductors
 for Busway Feeder

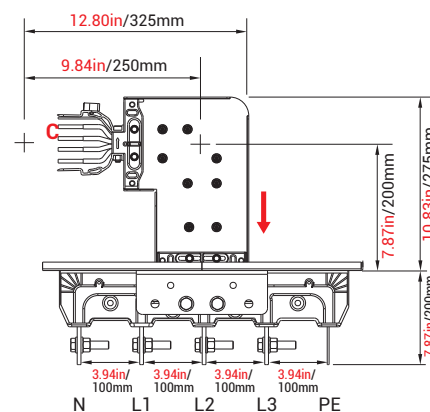


Downwards Panel Connection - P D 2 0

Panel Feeder



Sample Order:
KXC-III 43507-B-PD20
 4250 A, Copper, Bolt-on,
 IP 55, 4 1/2 conductors
 for Busway Feeder



For connection dimensions please refer to tables on pages 24 and 25.

■ Distance between conductors can vary in 0.20in./±5 mm
 ■ Please call us for non-standard components.

■ The dimensions given above are minimum values.

E-LINE KX-III

Busway & Panel Connections



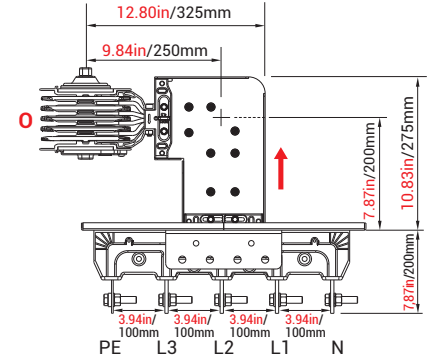
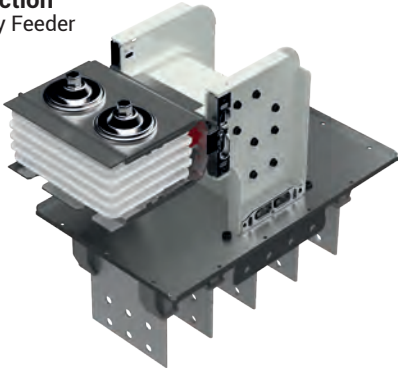
Upwards Busway Connection Busway Feeder

- P U 2 1

Sample Order:

KXC-III 36507-B-PU21
3600 A, Copper, Bolt-on,
IP 55, 4 1/2 conductors

for Busway Feeder



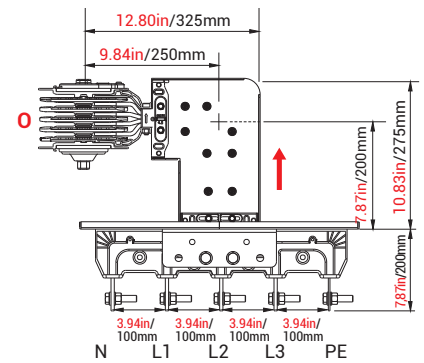
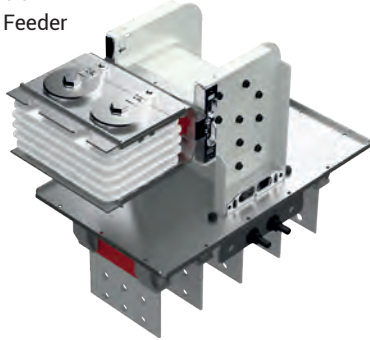
Downwards Busway Connection Busway Feeder

- P D 2 1

Sample Order:

KXC 43507-B-PD21
4250 A, Copper, Bolt-on,
IP 55, 4 1/2 conductors

for Busway Feeder



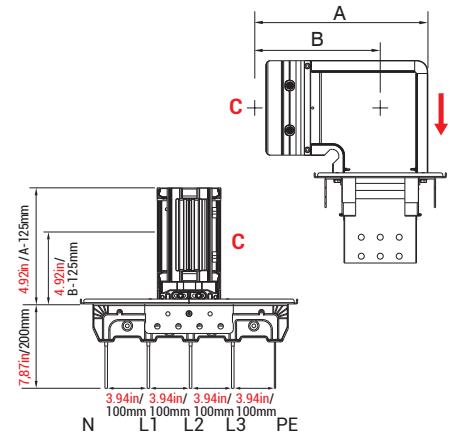
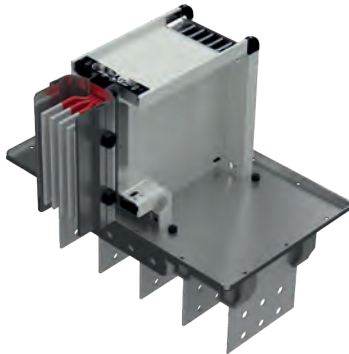
Right Panel Connection Panel Feeder

- P R 3 0

Sample Order:

KXC 25507-B-PR30
3600 A, Copper, Bolt-on,
IP 55, 4 1/2 conductors

for Busway Feeder



Left Panel Connection Panel Feeder

- P L 3 0

Sample Order:

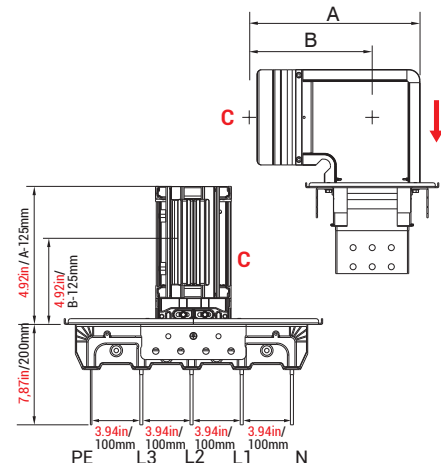
KXC 25507-B-PL30
2500 A, Copper, Bolt-on,
IP 55, 4 1/2 conductors

for Busway Feeder

Panel Feeder



The "A" and "B" dimensions for PR30 and PL30 are the same dimensions as left and right elbows. Please refer to page 12 for the dimensions.



For connection dimensions please refer to tables on pages 24 and 25.

■ Distance between conductors can vary in 0.20in./±5 mm
■ Please call us for non-standard components.

■ The dimensions given above are minimum values.

E-LINE KX-III

Panel Connections



Right Panel Connection Busway Feeder

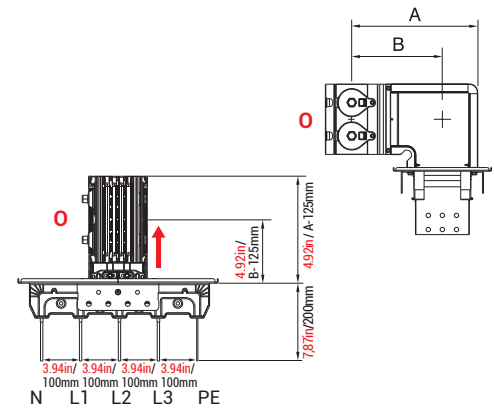
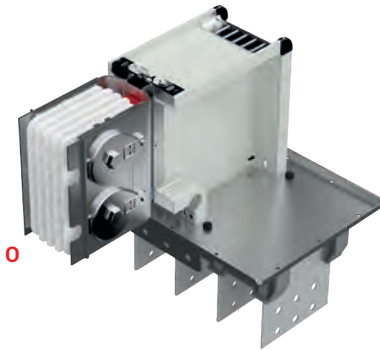
- P R 3 1

Sample Order:

KXC-III 25507-B-PR31
2500 A, Copper, Bolt-on,
IP 55, 4 1/2 conductors

for Busway Feeder

The "A" and "B" dimensions for PR31 and PL31 are the same dimensions as left and right elbows. Please refer to page 12 for the dimensions.



Left Panel Connection Busway Feeder

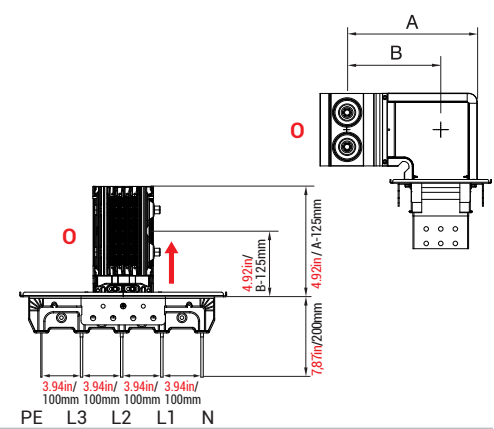
- P L 3 1

Sample Order:

KXC-III 25507-B-PL31
2500 A, Copper, Bolt-on,
IP 55, 4 1/2 conductors

for Busway Feeder

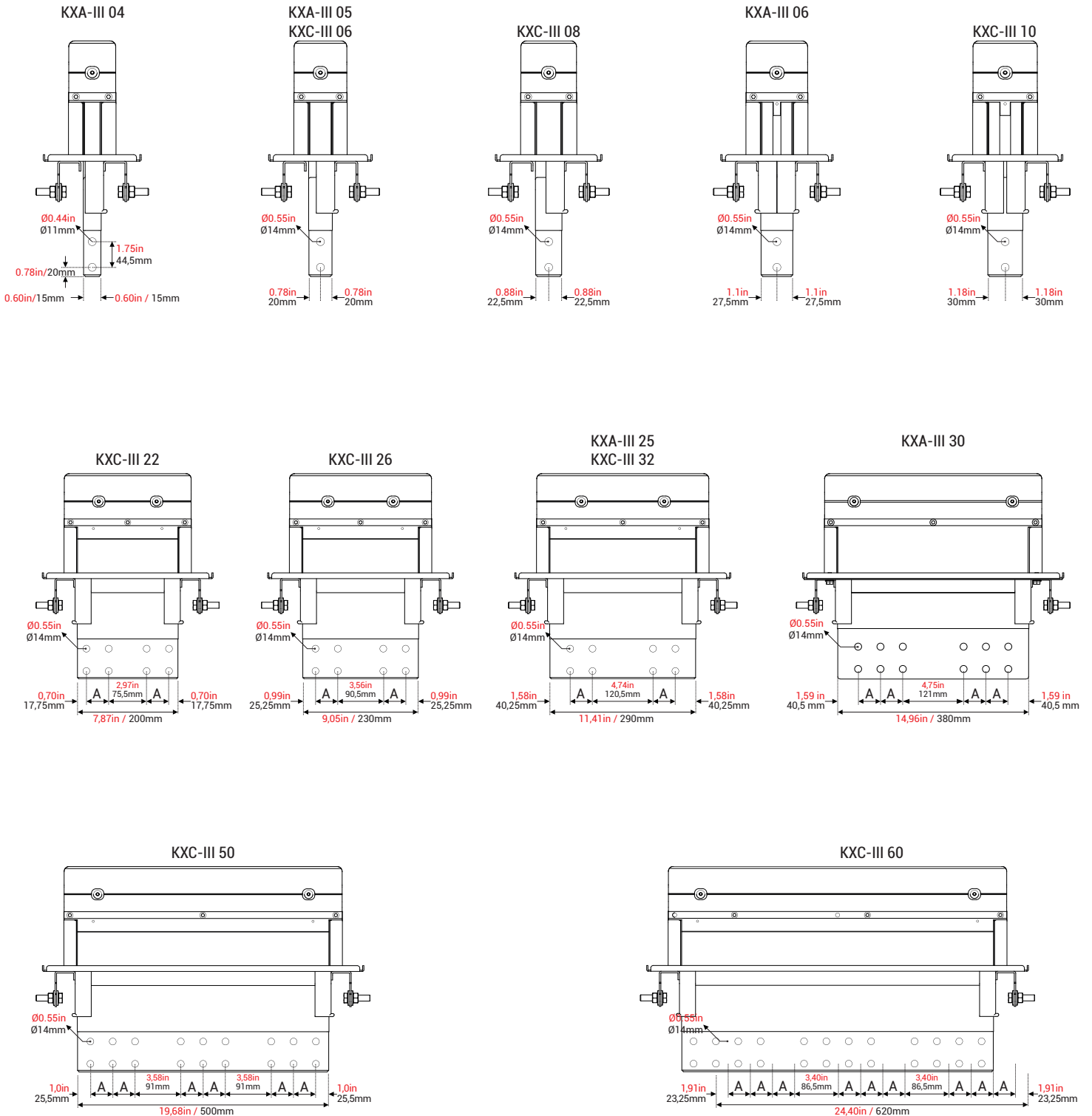
The "A" and "B" dimensions for PR31 and PL31 are the same dimensions as left and right elbows. Please refer to page 12 for the dimensions.



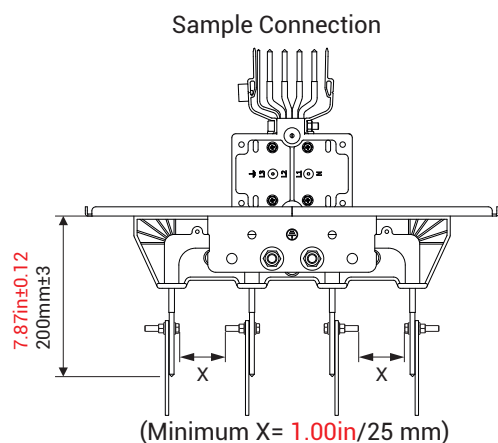
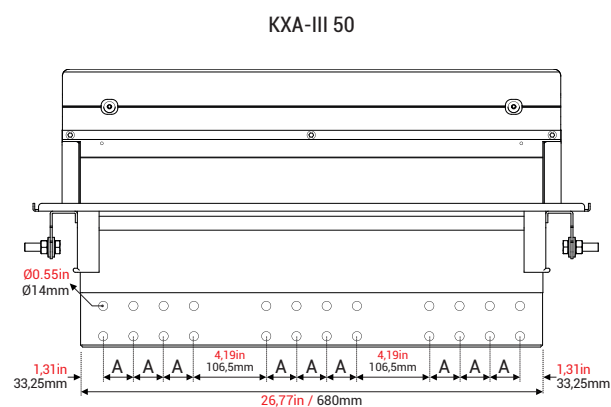
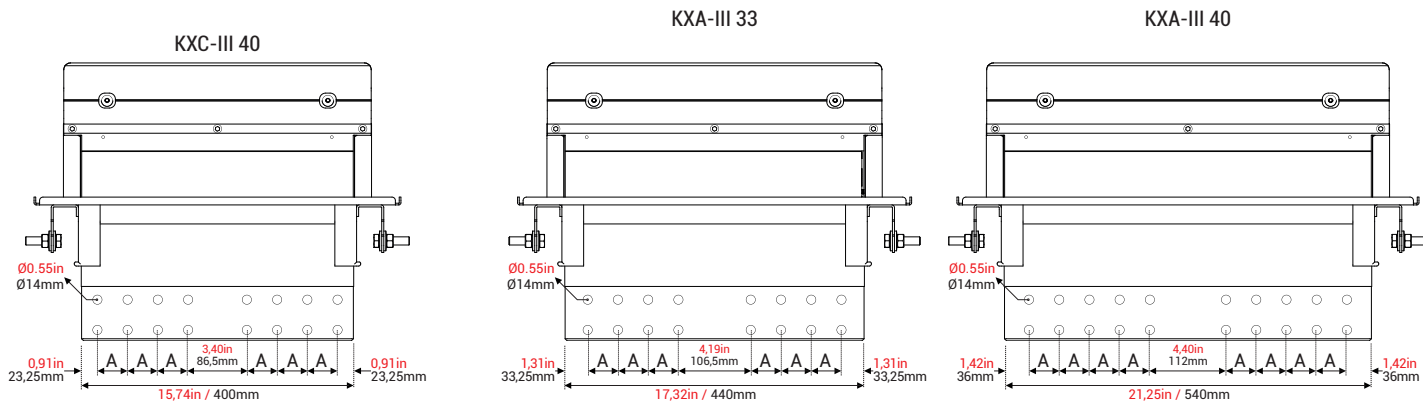
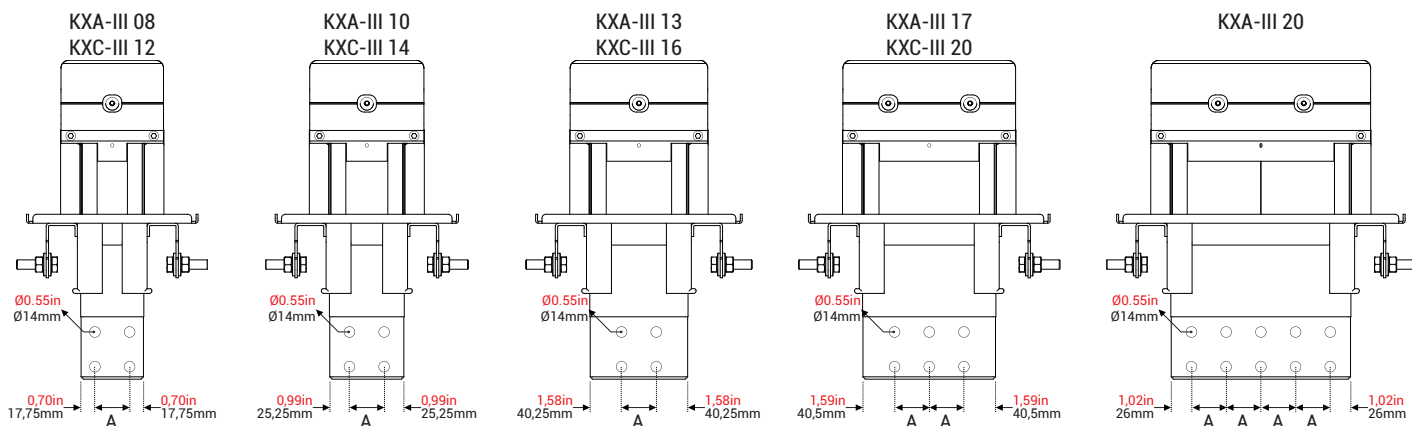
E-LINE KX-III

Panel Connection

Panel Connection Units / For all Panel Connection Units



■Please call us for non-standard components. ■Distance between conductors can vary in ± 5 0.20in./ ± 5 mm ■The dimensions given above are minimum values.



A	
(inch)	(mm)
1.75	44,5

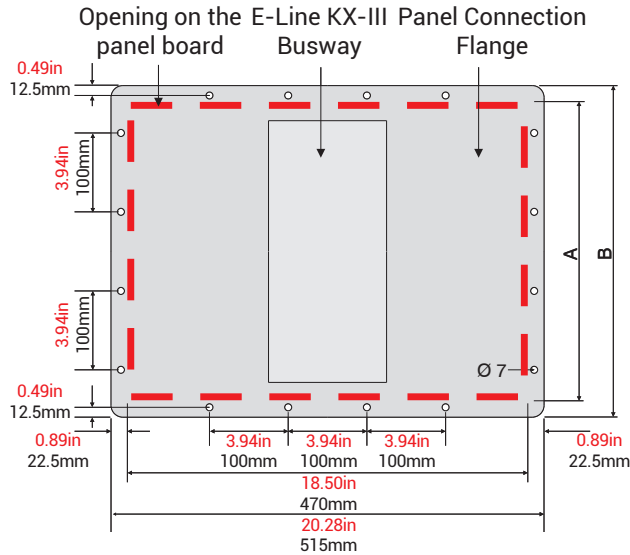
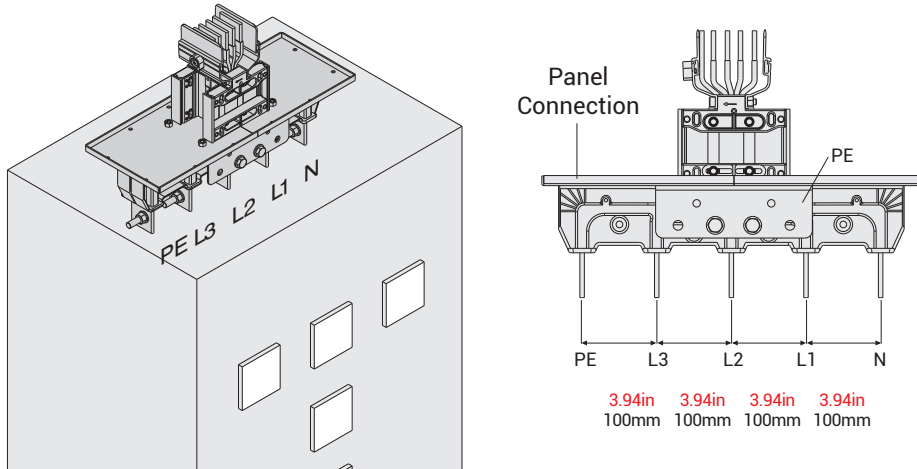
E-LINE KX-III

Panel Connection Dimensions



Flange Dimensions

Panel Connection Units are supplied with suitable flange as standard.



* Bolt and nut sets are supplied together with related product as per the quantities below.

Aluminium (Al)		Copper (Cu)		Conductor Size		A		B		Number of the holes along B length	* M6 Bolt / Nut Set (pcs)
Rated Current	Busway Code	Rated Current	Busway Code	(inch)	(mm)	(inch)	(mm)	(inch)	(mm)		
400	04	-	-	0.24x1.18	6x30	4.92	125	6.69	170	2	12
550	05	630	06	0.24x1.57	6x40	5.31	135	7.09	180	2	12
-	-	800	08	0.24x1.77	6x45	5.51	140	7.28	185	2	12
630	06	-	-	0.24x2.17	6x55	5.91	150	7.68	195	2	12
-	-	1000	10	0.24x2.36	6x60	6.10	155	7.87	200	2	12
800	08	1250	12	0.24x3.15	6x80	6.89	175	8.66	220	2	12
1000	10	1350	14	0.24x3.74	6x95	7.48	190	9.25	235	3	14
1300	13	1600	16	0.24x4.92	6x125	8.66	220	10.43	265	3	14
1600	17	2000	20	0.24x6.69	6x170	10.43	265	12.20	310	3	14
2000	20	-	-	0.24x9.06	6x230	12.80	325	14.57	370	4	16
-	-	2000	22	2(0.24x3.15)	2(6x80)	11.61	295	13.39	340	3	14
-	-	2500	26	2(0.24x3.74)	2(6x95)	12.80	325	14.57	370	4	16
2500	25	3200	32	2(0.24x4.92)	2(6x125)	15.16	385	16.93	430	4	16
3000	30	-	-	2(0.24x6.69)	2(6x170)	18.71	475	20.48	520	5	18
-	-	4000	40	2(0.24x7.09)	2(6x180)	19.49	495	21.26	540	5	19
3200	33	-	-	2(0.24x7.87)	2(6x200)	21.06	535	22.83	580	6	20
4000	40	-	-	2(0.24x9.84)	2(6x250)	25.00	635	26.77	680	7	22
-	-	5000	50	3(0.24x5.51)	3(6x140)	23.43	595	25.20	640	7	22
-	-	6000	60	3(0.24x7.09)	3(6x180)	28.15	715	29.92	760	8	24
5000	50	-	-	3(0.24x7.87)	3(6x200)	30.51	775	32.28	820	8	24

KXSP-III 0100604F03CC

KX - SP - III - 0100 - 6 - 04 - F - 03 - CC
I II III IV V VI VII VIII IX

I. Type of Busway series

- a. KXA : Aluminum conductor busway
- b. KXC : Copper conductor busway

II. Fittings type

- a. SP : Small Plug-in
- b. P : Standard Plug-in
- c. BP : Big Plug-in
- d. B : Bolt-on

III. Standard

- a. III : UL

IV. Current code

- a. 0030 : 30 Amps
- b. 0060 : 60 Amps
- c. 0090 : 90 Amps
- d. 0100 : 100 Amps
- e. 0120 : 120 Amps
- f. 0125 : 125 Amps
- g. 0200 : 200 Amps
- h. 0250 : 250 Amps
- i. 0400 : 400 Amps
- j. 0600 : 600 Amps
- k. 0800 : 800 Amps
- l. 1000 : 1000 Amps

V. Rated Voltage

- a. 2 : 240 V
- b. 4 : 480 V
- c. 6 : 600 V

VI. Conductor number of busway

- a. 03 : 3 Wire (3 ph + PE Enclosure)
- b. 04 : 4 Wire (3 ph + N + PE Enclosure)
- c. 05 : 5 Wire (3 ph + N + CPE + PE enclosure)
- d. 06 : 6 Wire (3 ph + N1 + N2 + CPE + PE enclosure)
- e. 07 : 4.5 Wire (3PH + 1N + 1/2PE conductors + PE enclosure)
- f. 08 : 4.5 Wire (3PH + 1N + 1/2CPE Conductors + PE enclosure)
- g. 09 : 5 Wire (3PH + 1N + 1CPE Conductors + PE enclosure)
- h. 13 : 3.5 Wire (3PH + 1/2PE Conductors + PE enclosure)

VII. Fittings' protection device type

- a. E : No protection / Empty box
- b. F : Fusible
- c. M : MCCB
- d. MC : MCB

VIII. Brand of protection device

- a. 01 : -
- ... : -
- h. 08 : -

IX. Protection device type

- a. CC : CC type fuse
- b. J : J type fuse
- c. MCCB : MCCB
- d. MC : MCB

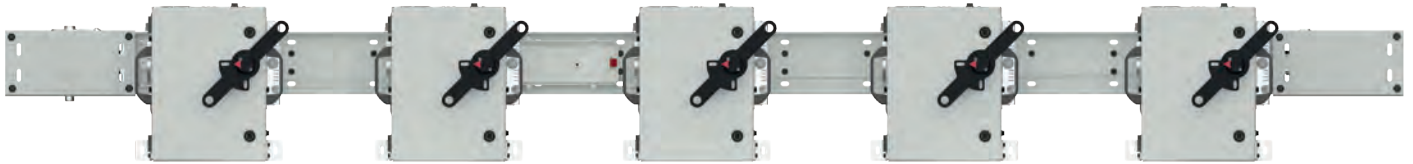
E-LINE KX-III

Busplug Installation Orientation

Fusible Busplug



100A



200A



400A - 600A



E-LINE KX-III

Busplug Installation Orientation

MCCB Busplug



125A



250A



400A - 600A



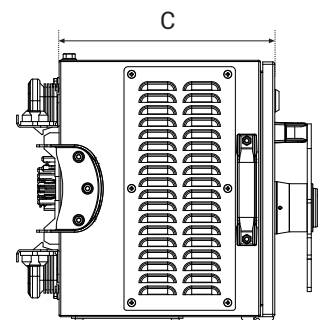
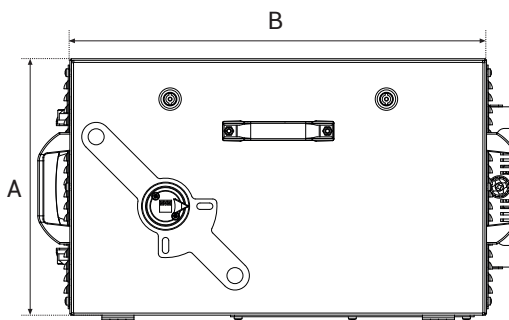
800A - 1000A



E-LINE KX-III

Tap-off Boxes

MCCB Busplug



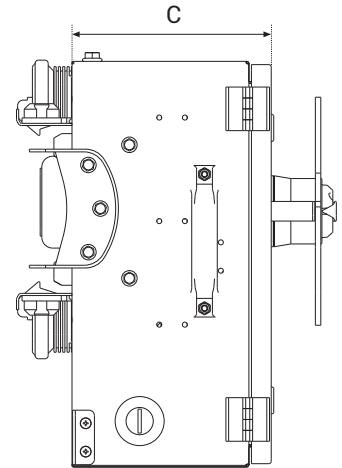
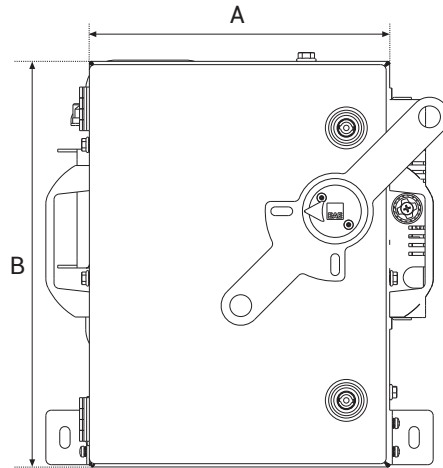
MCCB BUSPLUG						
Rated Current	A (mm) / (inch)	B (mm) / (inch)	C (mm) / (inch)	Max Qty. for 10ft Busway	Short Circuit Current Rating kA	Order Code
125A	320 / 12.59in	520 / 20.47in	270 / 10.62in	4	25kA/600V	3295924
250A	385 / 15.15in	585 / 23.03in	270 / 10.62in	3	25kA/600V	3295925
400A	510 / 20.07in	805 / 31.69in	270 / 10.62in	2	35kA/600V	3295926
600A	510 / 20.07in	805 / 31.69in	270 / 10.62in	2	35kA/600V	3295927
(*) 800A	730 / 28.74in	925 / 36.41in	355 / 13.97in	2	65kA/600V	3414652
(*) 1000A	730 / 28.74in	925 / 36.41in	355 / 13.97in	2	65kA/600V	3383334

(*) Please get in touch with sales team to project support.

E-LINE KX-III

Tap-off Boxes

Fusible Busplug



FUSIBLE BUSPLUG						
Rated Current	A (mm) / (inch)	B (mm) / (inch)	C (mm) / (inch)	Max Qty. for 10ft Busway	Short Circuit Current Rating kA	Order Code
100A	275 / 10.82in	370 / 14.56in	210 / 8.26in	5	100kA/600V	3176836
200A	520 / 20.47in	615 / 24.21in	305 / 12.00in	3	100kA/600V	3299537
400A	600 / 23.62in	900 / 35.43in	415 / 16.33in	2	100kA/600V	3299538
600A	600 / 23.62in	900 / 35.43in	415 / 16.33in	2	100kA/600V	3299539

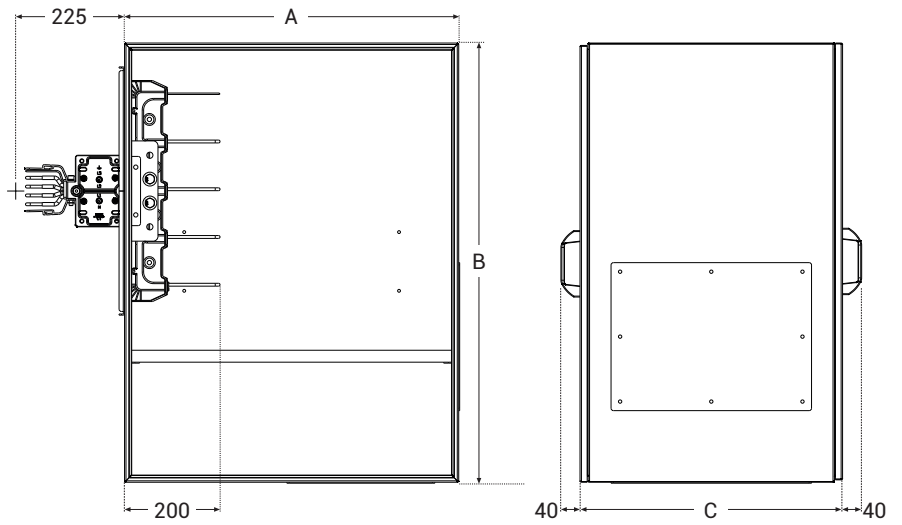
E-LINE KX-III

Horizontal End Feed Box

(B10H - B11H)



B10H Horizontal End Feed Box



Sample Order:

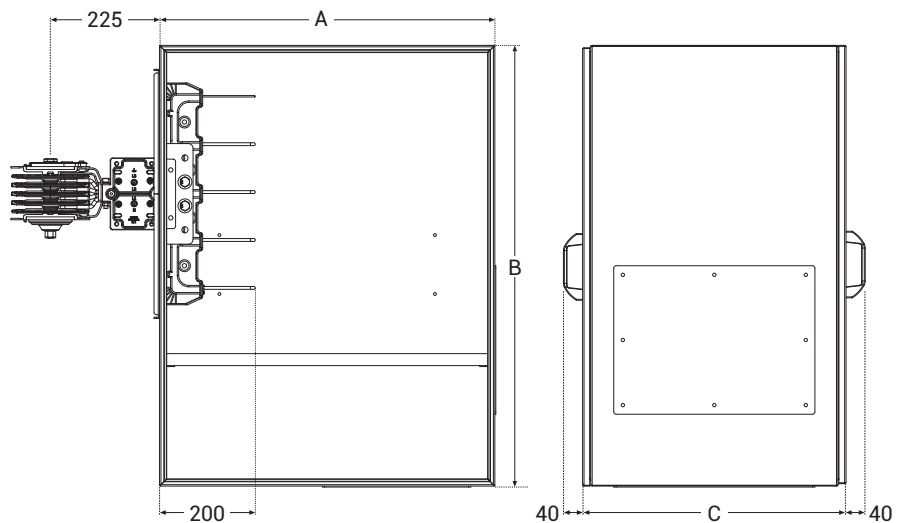
2500A, Aluminum, Bolt-on, 4W

KXA-III 25504-B-B10H

Important Note:

Please determine the end cable box orientation (H or V) According to project design and inform the production team.

B11H Horizontal End Feed Box



Sample Order:

3200A, Copper, Bolt-on, 4,5W

KXC-III 33507-B-B11H

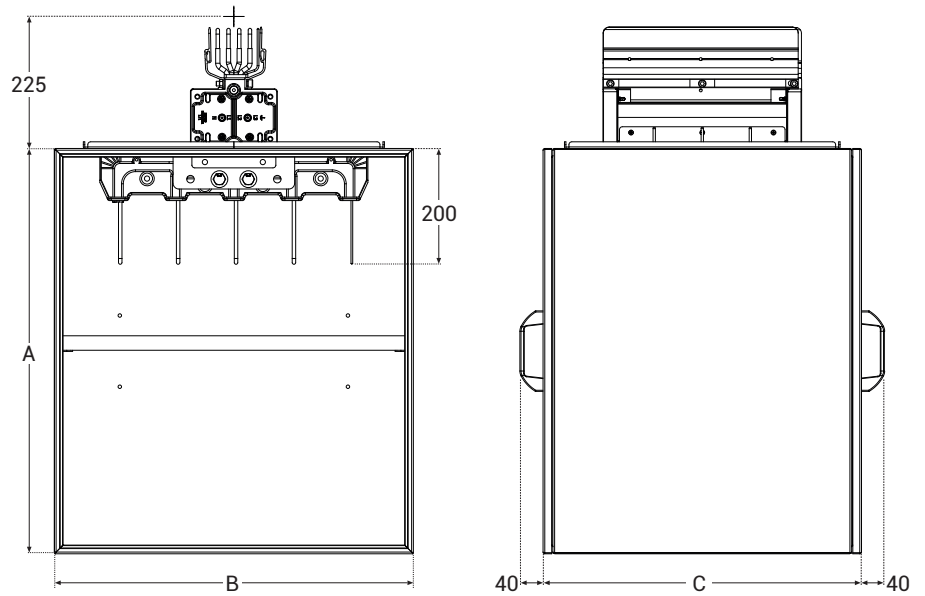
E-LINE KX-III

Vertical End Feed Box

(B10V - B11V)



B10V Vertical End Feed Box



Sample Order:

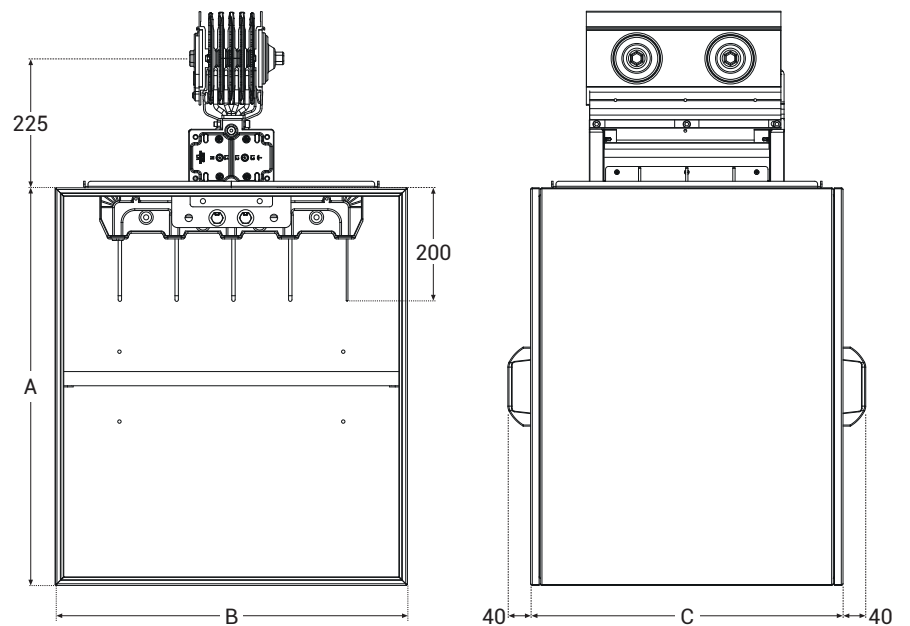
2500A, Aluminum, Bolt-on, 4W

KXA-III 25504-B-B10V

Important Note:

Please determine the end cable box orientation (H or V) According to project design and inform the production team.

B11V Vertical Feed Box



Sample Order:

3200A, Copper, Bolt-on, 4,5W

KXC-III 33507-B-B11V

E-LINE KX-III

End Cable Box Dimension Table



Quantity denotes the minimum required number of #4 AWG to 600 kcmil Cu/Al cable connections, furnished, installed, and maintained in accordance with project specifications.

	HORIZONTAL				VERTICAL			
	A (mm) / (inch)	B (mm) / (inch)	C (mm) / (inch)	Cable Lug Qty	A (mm) / (inch)	B (mm) / (inch)	C (mm) / (inch)	Cable Lug Qty
AL								
400	700 / 27.56in	920 / 36.22in	355 / 13.98in	1	700 / 27.56in	620 / 24.4in *720 / 28.35in	355 / 13.98in	1
550	700 / 27.56in	920 / 36.22in	355 / 13.98in	2	700 / 27.56in	620 / 24.4in *720 / 28.35in	355 / 13.98in	2
630	700 / 27.56in	920 / 36.22in	355 / 13.98in	2	700 / 27.56in	620 / 24.4in *720 / 28.35in	355 / 13.98in	2
800	700 / 27.56in	920 / 36.22in	355 / 13.98in	3	700 / 27.56in	620 / 24.4in *720 / 28.35in	355 / 13.98in	3
1000	700 / 27.56in	920 / 36.22in	355 / 13.98in	4	700 / 27.56in	620 / 24.4in *720 / 28.35in	355 / 13.98in	4
1300	700 / 27.56in	920 / 36.22in	550 / 21.65in	4	700 / 27.56in	620 / 24.4in *720 / 28.35in	550 / 21.65in	4
1600	700 / 27.56in	920 / 36.22in	550 / 21.65in	5	700 / 27.56in	620 / 24.4in *720 / 28.35in	550 / 21.65in	5
2000	700 / 27.56in	920 / 36.22in	550 / 21.65in	6	700 / 27.56in	620 / 24.4in *720 / 28.35in	550 / 21.65in	6
2500	700 / 27.56in	920 / 36.22in	550 / 21.65in	8	700 / 27.56in	620 / 24.4in *720 / 28.35in	550 / 21.65in	8
3000	700 / 27.56in	920 / 36.22in	940 / 37in	8	700 / 27.56in	620 / 24.4in *720 / 28.35in	940 / 37in	8
3200	700 / 27.56in	920 / 36.22in	940 / 37in	9	700 / 27.56in	620 / 24.4in *720 / 28.35in	940 / 37in	9
4000	700 / 27.56in	920 / 36.22in	940 / 37in	12	700 / 27.56in	620 / 24.4in *720 / 28.35in	940 / 37in	12
5000	700 / 27.56in	920 / 36.22in	940 / 37in	15	700 / 27.56in	620 / 24.4in *720 / 28.35in	940 / 37in	15
CU								
630	700 / 27.56in	920 / 36.22in	355 / 13.98in	2	700 / 27.56in	620 / 24.4in *720 / 28.35in	355 / 13.98in	2
800	700 / 27.56in	920 / 36.22in	355 / 13.98in	3	700 / 27.56in	620 / 24.4in *720 / 28.35in	355 / 13.98in	3
1000	700 / 27.56in	920 / 36.22in	355 / 13.98in	4	700 / 27.56in	620 / 24.4in *720 / 28.35in	355 / 13.98in	4
1250	700 / 27.56in	920 / 36.22in	355 / 13.98in	4	700 / 27.56in	620 / 24.4in *720 / 28.35in	355 / 13.98in	4
1350	700 / 27.56in	920 / 36.22in	355 / 13.98in	4	700 / 27.56in	620 / 24.4in *720 / 28.35in	355 / 13.98in	4
1600	700 / 27.56in	920 / 36.22in	550 / 21.65in	5	700 / 27.56in	620 / 24.4in *720 / 28.35in	550 / 21.65in	5
2000	700 / 27.56in	920 / 36.22in	550 / 21.65in	6	700 / 27.56in	620 / 24.4in *720 / 28.35in	550 / 21.65in	6
2000	700 / 27.56in	920 / 36.22in	550 / 21.65in	6	700 / 27.56in	620 / 24.4in *720 / 28.35in	550 / 21.65in	6
2500	700 / 27.56in	920 / 36.22in	550 / 21.65in	8	700 / 27.56in	620 / 24.4in *720 / 28.35in	550 / 21.65in	8
3200	700 / 27.56in	920 / 36.22in	550 / 21.65in	9	700 / 27.56in	620 / 24.4in *720 / 28.35in	550 / 21.65in	9
4000	700 / 27.56in	920 / 36.22in	940 / 37in	12	700 / 27.56in	620 / 24.4in *720 / 28.35in	940 / 37in	12
5000	700 / 27.56in	920 / 36.22in	940 / 37in	15	700 / 27.56in	620 / 24.4in *720 / 28.35in	940 / 37.00in	15
6000	700 / 27.56in	920 / 36.22in	940 / 37in	15	700 / 27.56in	620 / 24.4in *720 / 28.35in	940 / 37.00in	15

* Please use this dimensions for 5W project.

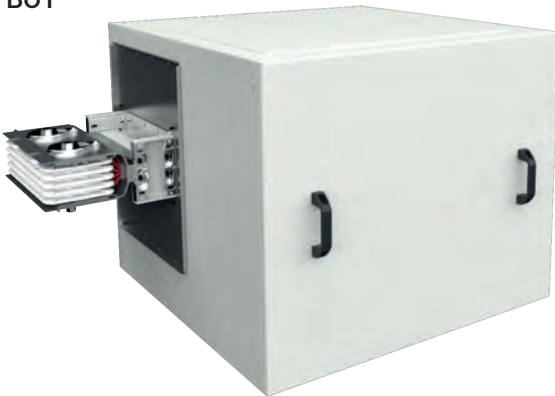
E-LINE KX-III

Feeder Boxes

(B01-B02)



B01



■ B01 (Joint Pack Left)

Sample Order:

2500A, Aluminum, Bolt-on, 4W
KXA-III 25504-B-B01

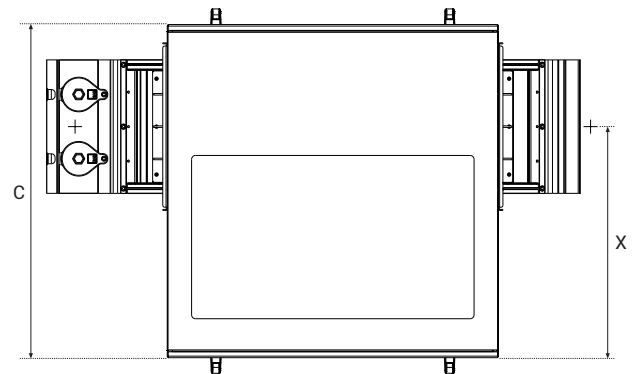
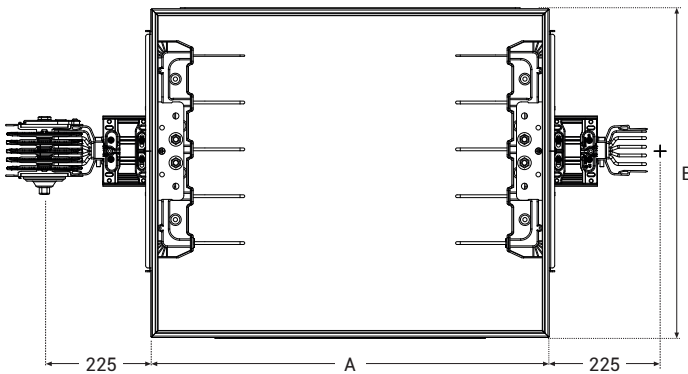
B02



■ B02 (Joint Pack Right)

Sample Order:

2500A, Aluminum, Bolt-on, 4W
KXA-III 25504-B-B02



KXA - HORIZONTAL / VERTICAL						
AL		A (mm) / (inch)	B (mm) / (inch)	C (mm) / (inch)	X (mm) / (inch)	Qty.
400	6x30	350 / 13.77in	515 / 20.27in *650 / 25.59in	635 / 25.00in	491 / 19.33in	1
550	6x40	350 / 13.77in	515 / 20.27in *650 / 25.59in	645 / 25.39in	496 / 19.52in	2
630	6x55	350 / 13.77in	515 / 20.27in *650 / 25.59in	660 / 25.98in	504 / 19.84in	2
800	6x80	350 / 13.77in	515 / 20.27in *650 / 25.59in	685 / 26.96in	516 / 20.31in	3
1000	6x95	400 / 15.74in	515 / 20.27in *650 / 25.59in	700 / 27.55in	524 / 20.62in	4
1300	6x125	400 / 15.74in	515 / 20.27in *650 / 25.59in	730 / 28.74in	539 / 21.22in	4
1600	6x170	450 / 17.71in	515 / 20.27in *650 / 25.59in	775 / 30.51in	561 / 22.08in	5
2000	6x230	500 / 19.68in	515 / 20.27in *650 / 25.59in	835 / 32.87in	591 / 23.26in	6
2500	2(6x125)	600 / 23.62in	515 / 20.27in *650 / 25.59in	895 / 35.23in	621 / 24.44in	8
3000	2(6x170)	600 / 23.62in	515 / 20.27in *650 / 25.59in	605 / 23.81in	476 / 18.74in	8
3200	2(6x200)	650 / 25.59in	515 / 20.27in *650 / 25.59in	1045 / 41.14in	696 / 27.40in	9
4000	2(6x250)	800 / 31.49in	515 / 20.27in *650 / 25.59in	1145 / 45.07in	746 / 29.37in	12
5000	3(6x200)	950 / 37.40in	515 / 20.27in *650 / 25.59in	1285 / 50.59in	816 / 32.12in	15

KXC - HORIZONTAL / VERTICAL						
CU		A (mm) / (inch)	B (mm) / (inch)	C (mm) / (inch)	X (mm) / (inch)	Qty.
630	6x40	350 / 13.77in	515 / 20.27in *650 / 25.59in	645 / 25.39in	496 / 19.52in	2
800	6x45	350 / 13.77in	515 / 20.27in *650 / 25.59in	650 / 25.59in	499 / 19.64in	3
1000	6x60	400 / 15.74in	515 / 20.27in *650 / 25.59in	665 / 26.18in	506 / 19.92in	4
1250	6x80	400 / 15.74in	515 / 20.27in *650 / 25.59in	685 / 26.96in	516 / 20.31in	4
1350	6x95	400 / 15.74in	515 / 20.27in *650 / 25.59in	700 / 27.55in	524 / 20.62in	4
1600	6x125	450 / 17.71in	515 / 20.27in *650 / 25.59in	730 / 28.74in	539 / 21.22in	5
2000	6x170	500 / 19.68in	515 / 20.27in *650 / 25.59in	775 / 30.51in	561 / 22.08in	6
2000	2(6x80)	500 / 19.68in	515 / 20.27in *650 / 25.59in	805 / 31.69in	576 / 22.67in	6
2500	2(2x95)	600 / 23.62in	515 / 20.27in *650 / 25.59in	835 / 32.87in	591 / 23.26in	8
3200	2(6x125)	650 / 25.59in	515 / 20.27in *650 / 25.59in	895 / 35.23in	621 / 24.44in	9
4000	2(6x180)	800 / 31.49in	515 / 20.27in *650 / 25.59in	1005 / 35.23in	676 / 26.61in	12
5000	3(6x140)	950 / 37.40in	515 / 20.27in *650 / 25.59in	1105 / 43.50in	726 / 28.58in	15
6000	3(6x180)	950 / 37.40in	515 / 20.27in *650 / 25.59in	1225 / 48.22in	786 / 30.94in	15

Quantity denotes the minimum required number of #4 AWG to 600 kcmil Cu/Al cable connections, furnished, installed, and maintained in accordance with project specifications.

* Please use this dimensions for 5W project.

E-LINE KX-III

Vertical and Horizontal Busway Applications

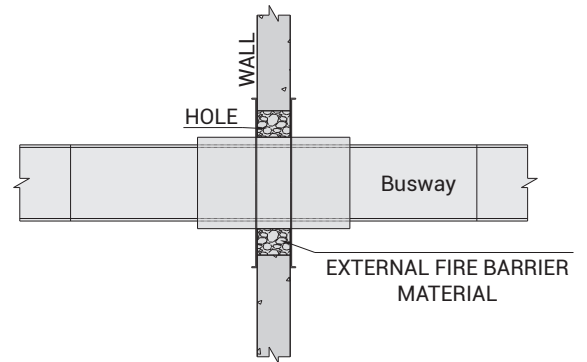
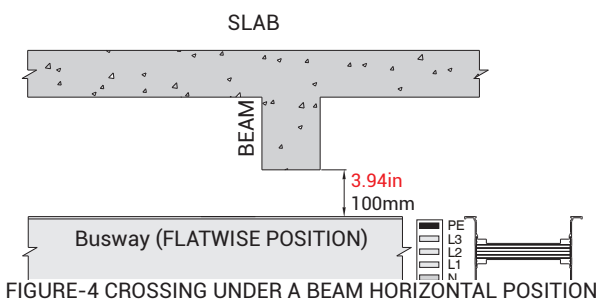
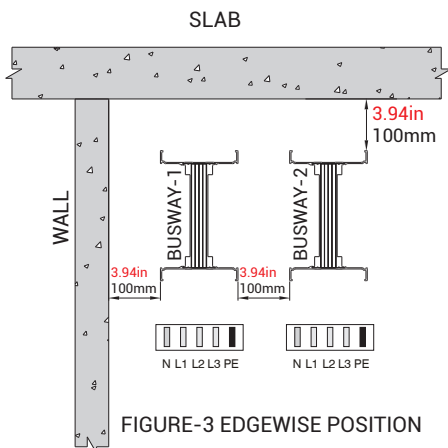
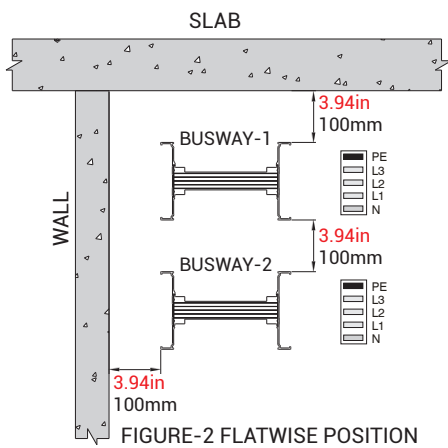
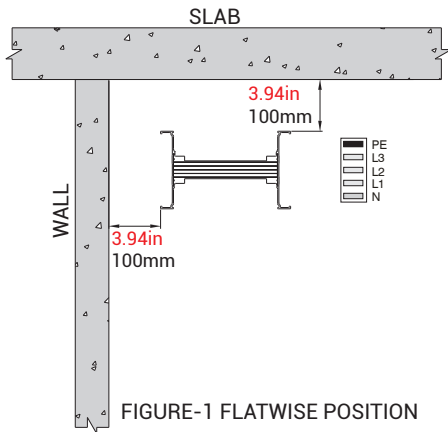


FIGURE-5 SAMPLE WALL CROSSING WITH FIRE BARRIER

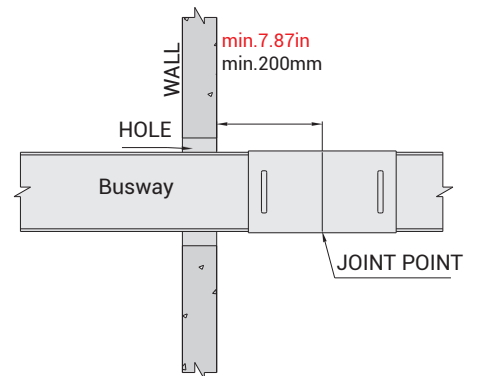
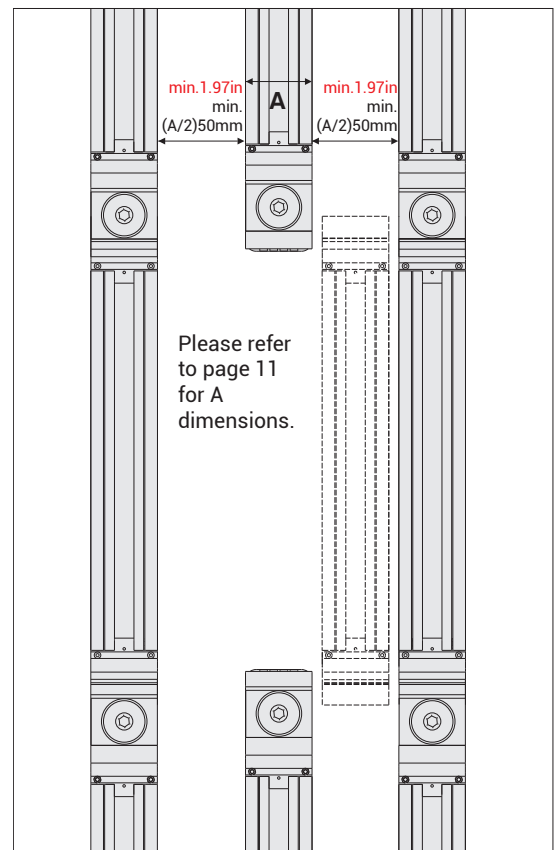


FIGURE-6 STANDARD WALL CROSSING



MINIMUM DISTANCE BETWEEN BUSWAY RUNS IN HORIZONTAL APPLICATIONS.

E-LINE KX-III

Vertical and Horizontal Busway Applications

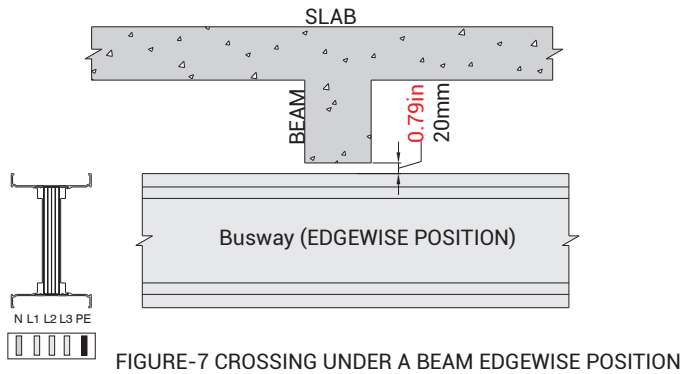


FIGURE-7 CROSSING UNDER A BEAM EDGEWISE POSITION

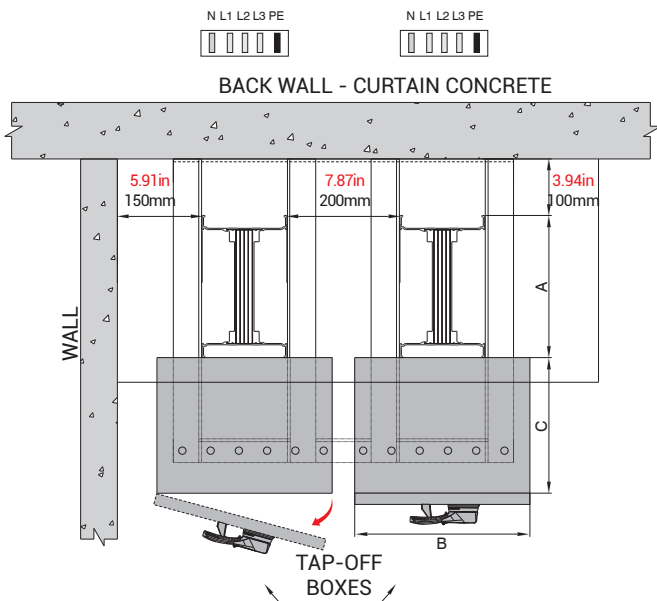


FIGURE-8 MINIMUM DIMENSIONS BETWEEN 2 TAP-OFF BOXES

NOTE: In order to accommodate the busway systems in the riser shaft;

MDM= Minimum Distance from the wall

"A" dimension = All dimensions are for standard modules.

"C" dimension = Please see page 31-32 and special dimension for Tap-off box "C" dimension.

"B" dimension = Max. opening distance for Tap-off box cover.

Shaft Dimension = $MDM + A + C + B + 3.94\text{in}/100\text{mm}$ Shown as (Figure-8)

In all buildings and structures, to prevent the propagation of fire between fire compartments, any horizontal and vertical penetrations of electrical installations from one fire compartment to another shall be properly sealed. All such openings must be closed using fire-stopping systems—such as fire-resistant mortars, pillows, panels, or equivalent materials—providing a fire resistance rating at least equal to that of the respective fire compartment.

Warning: The use of excessively fluid fire-stopping mortars may result in leakage through the busbar enclosure, potentially causing structural damage at joint interfaces and contact surfaces of tap-off units. Such conditions may lead to critical electrical failures, including short circuits and arcing faults. Therefore, it is essential that fire-stopping applications are performed using materials with appropriate viscosity and with installation methods designed to prevent leakage.

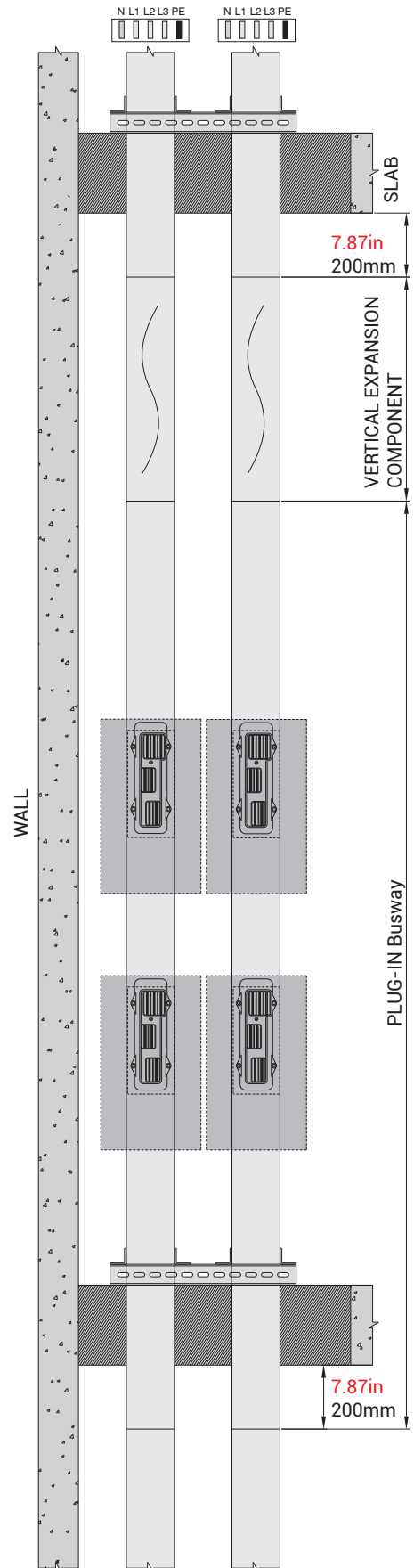


FIGURE-9 MINIMUM DIMENSIONS BETWEEN 2 RISERS

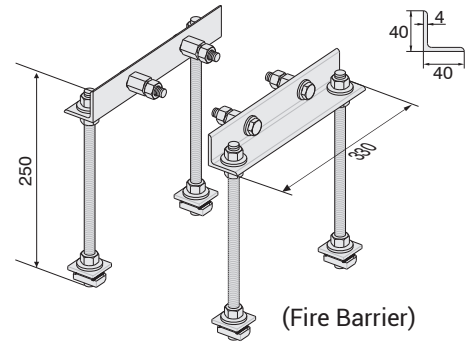
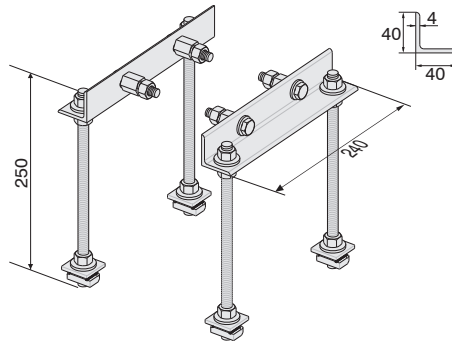
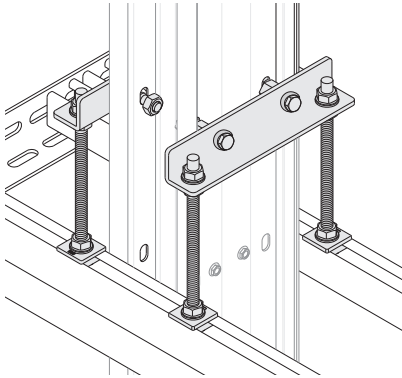
E-LINE KX-III

Fixing Elements

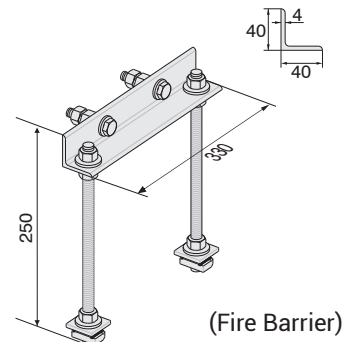
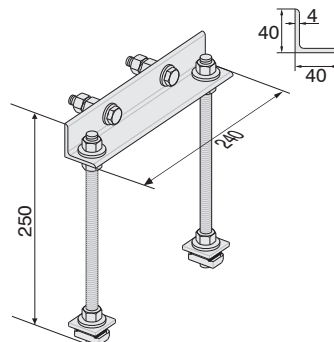
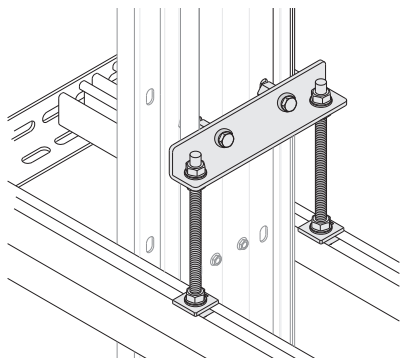
Supports



Supports

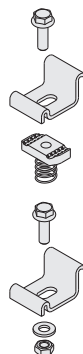


Description	Order Code
KX Vertical Riser Fixing Unit	3048475
KX Vertical Riser Fixing Unit (Fire Barrier)	3048707



Description	Order Code
* KX Vertical Riser Fixing Unit	3305415
* KX Vertical Riser Fixing Unit (Fire Barrier)	3305419

Fixing Elements



* KXA-III 04	6x30
* KXA-III 05	6x40
* KXA-III 06	6x55
* KXC-III 06	6x40
* KXC-III 08	6x45

Description	Order Code
KX Fixing Clamp for Binrak (Unistrut) Channel	2011227

Description	Order Code
KX Fixing Clamp for Steel Angle Profile	2011226

■ The dimensions given above are minimum values. ■ All measures are given in inch./mm

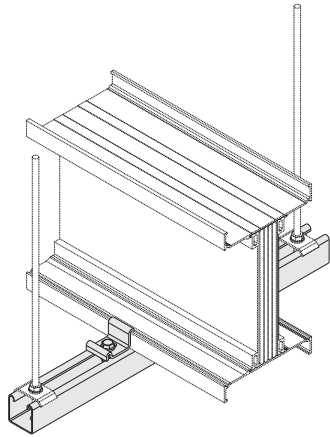
E-LINE KX-III

Fixing Elements

Supports

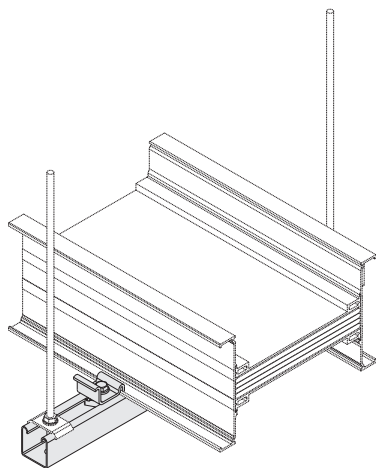
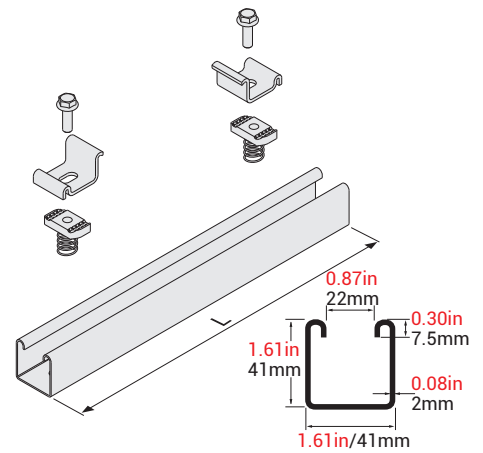
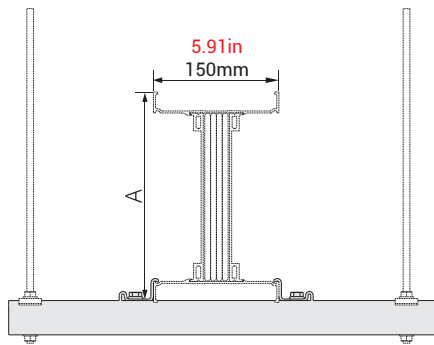


Supports



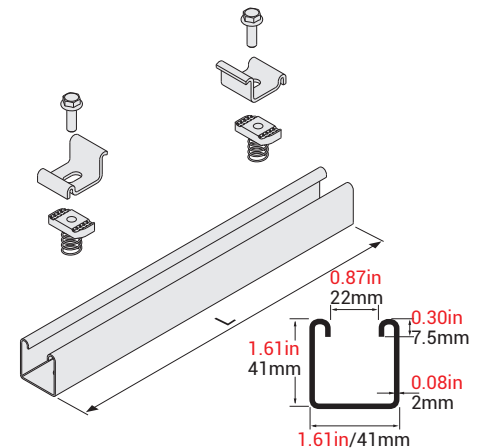
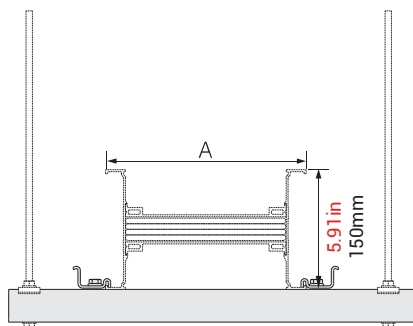
KX - BRA HANGER SET FOR EDGEWISE APPLICATION TO BINRAK (UNISTRUT) CHANNEL

Al Conductor		Cu Conductor		L		A		Order Code
Rated Current	Busway Code	Rated Current	Busway Code	(inch)	(mm)	(inch)	(mm)	
400	04	-	-	13.78	350	3.25	82.5	3025372
550	05	630	06			3.58	91	
-	-	800	08			3.78	96	
630	06	-	-			4.17	106	
-	-	1000	10			4.37	111	
800	08	1250	12			5.16	131	
1000	10	1350	14			5.75	146	
1300	13	1600	16			6.93	176	
1600	17	2000	20			8.70	221	
2000	20	-	-			11.06	281	



KX - BRA HANGER SET FOR FLATWISE APPLICATION TO BINRAK (UNISTRUT) CHANNEL

Al Conductor		Cu Conductor		L		A		Order Code
Rated Current	Busway Code	Rated Current	Busway Code	(inch)	(mm)	(inch)	(mm)	
400	04	-	-	11.81	300	3.25	82.5	3025372
550	05	630	06			3.58	91	
-	-	800	08			3.78	96	
630	06	-	-			4.17	106	
-	-	1000	10			4.37	111	
800	08	1250	12	5.16	131	3025373		
1000	10	1350	14	5.75	146			
1300	13	1600	16	6.93	176	3025373		
1600	17	2000	20	8.70	221	3025374		
2000	20	-	-	11.06	281	3025375		

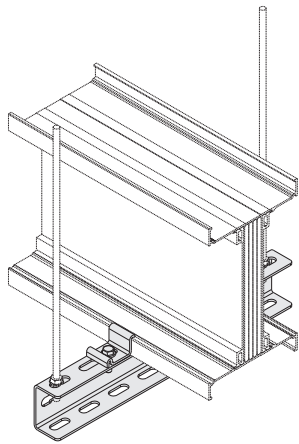


■ The dimensions given above are minimum values. ■ All measures are given in inch. /mm

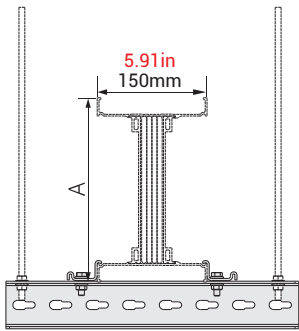
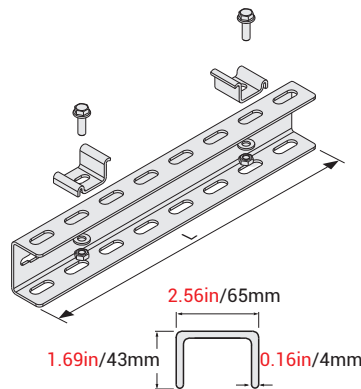
E-LINE KX-III

Fixing Elements

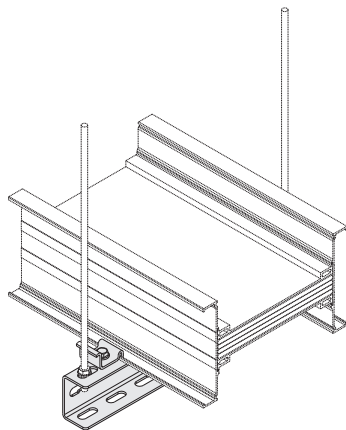
Supports



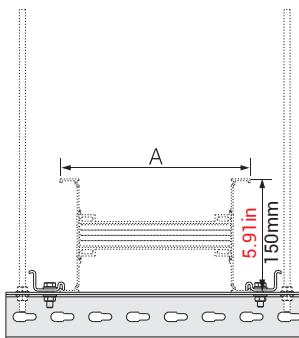
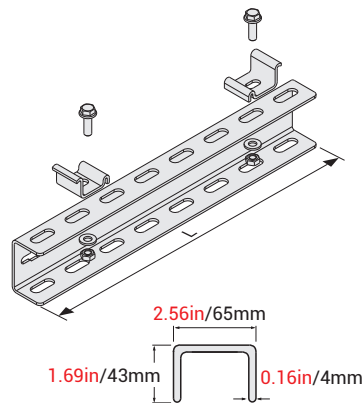
**KX - UT HANGER SET
FOR EDGEWISE
APPLICATION
TO NPU CHANNEL**



Al Conductor		Cu Conductor		L		A		Order Code
Rated Current	Busway Code	Rated Current	Busway Code	(inch)	(mm)	(inch)	(mm)	
400	04	-	-	13.78	350	3.25	82.5	3025348
550	05	630	06			3.58	91	
-	-	800	08			3.78	96	
630	06	-	-			4.17	106	
-	-	1000	10			4.37	111	
800	08	1250	12			5.16	131	
1000	10	1350	14			5.75	146	
1300	13	1600	16			6.93	176	
1600	17	2000	20			8.70	221	
-	-	2000	22			9.92	252	
-	-	2500	26			11.10	282	
2500	25	3200	32			13.46	342	
-	-	4000	40			17.80	452	
3200	33	-	-			19.37	492	
4000	40	-	-			23.31	592	
-	-	5000	50			21.73	552	
-	-	6000	60	26.46	672			
5000	50	-	-	28.82	732			



**KX - UT HANGER SET
FOR FLATWISE
APPLICATION
TO NPU CHANNEL**



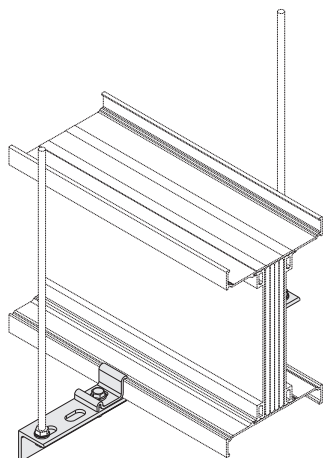
Al Conductor		Cu Conductor		L		A		Order Code
Rated Current	Busway Code	Rated Current	Busway Code	(inch)	(mm)	(inch)	(mm)	
400	04	-	-	11.81	300	3.25	82.5	3025347
550	05	630	06			3.58	91	
-	-	800	08			3.78	96	
630	06	-	-			4.17	106	
-	-	1000	10	4.37	111			
800	08	1250	12	5.16	131			
1000	10	1350	14	13.78	350	5.75	146	3025348
1300	13	1600	16	15.75	400	6.93	176	3025349
1600	17	2000	20			8.70	221	
2000	20	-	-	17.72	450	11.06	281	3025350
-	-	2000	22			9.92	252	
-	-	2500	26			11.10	282	
2500	25	3200	32	21.65	550	13.46	342	3025352
-	-	4000	40			17.80	452	
3200	33	-	-	27.56	700	19.37	492	3025354
4000	40	-	-			23.31	592	
-	-	5000	50			21.73	552	
-	-	6000	60			26.46	672	
5000	50	-	-	35.43	900	28.82	732	3025355

■ The dimensions given above are minimum values. ■ All measures are given in inch. /mm

E-LINE KX-III

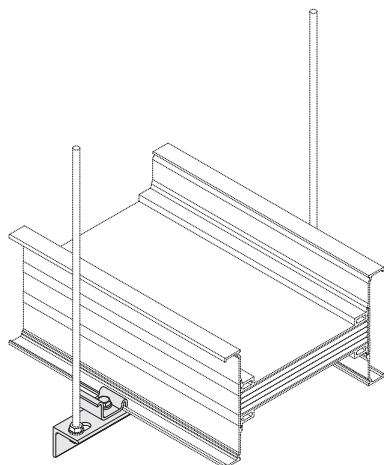
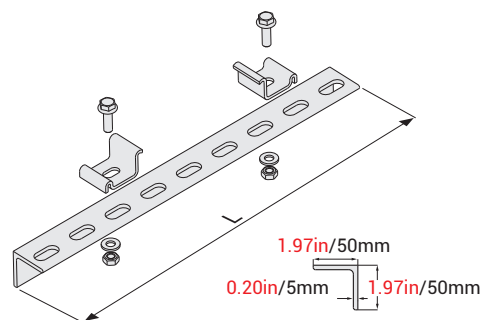
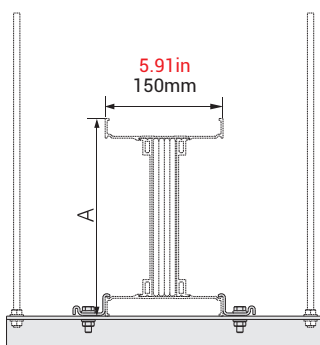
Fixing Elements

Supports



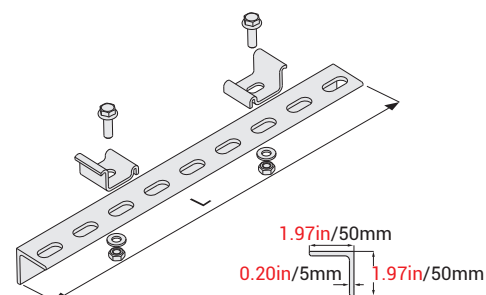
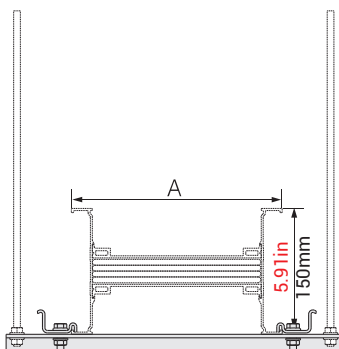
KX HANGER SET FOR EDGEWISE APPLICATION TO STEEL ANGLE PROFILE

Al Conductor		Cu Conductor		L		A		Order Code
Rated Current	Busway Code	Rated Current	Busway Code	(inch)	(mm)	(inch)	(mm)	
400	04	-	-	13.78	350	3.25	82.5	3025344
550	05	630	06			3.58	91	
-	-	800	08			3.78	96	
630	06	-	-			4.17	106	
-	-	1000	10			4.37	111	
800	08	1250	12			5.16	131	
1000	10	1350	14			5.75	146	
1300	13	1600	16			6.93	176	
1600	17	2000	20			8.70	221	
2000	20	-	-			11.06	281	



KX - BRA HANGER SET FOR FLATWISE APPLICATION TO BINRAK (UNISTRUT) CHANNEL

Al Conductor		Cu Conductor		L		A		Order Code
Rated Current	Busway Code	Rated Current	Busway Code	(inch)	(mm)	(inch)	(mm)	
400	04	-	-	11.81	300	3.25	82.5	3025372
550	05	630	06			3.58	91	
-	-	800	08			3.78	96	
630	06	-	-			4.17	106	
-	-	1000	10			4.37	111	
800	08	1250	12	5.16	131	3025374		
1000	10	1350	14	5.75	146			
1300	13	1600	16	13.78	350		6.93	176
1600	17	2000	20	15.75	400		8.70	221
2000	20	-	-	17.72	450		11.06	281

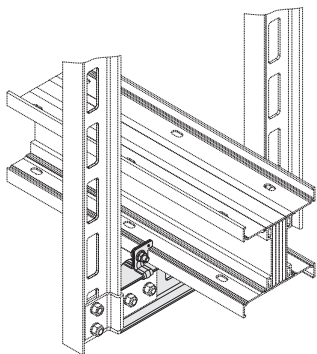
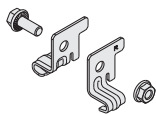


■ The dimensions given above are minimum values. ■ All measures are given in inch. /mm

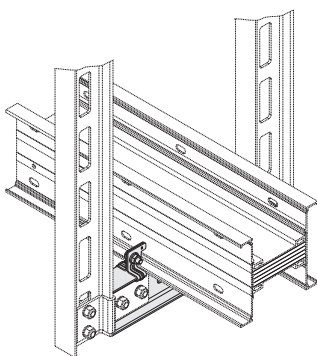
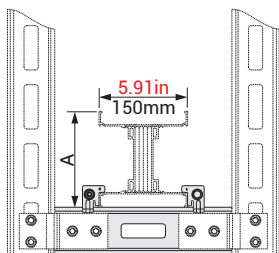
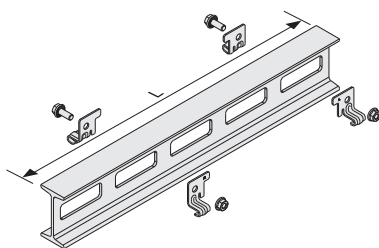
E-LINE KX-III

Fixing Elements

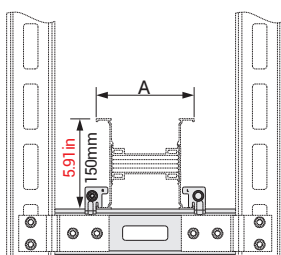
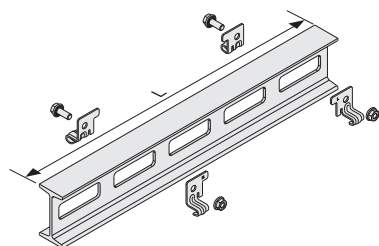
Supports



KX - IDY TWO-WAY FOR EDGEWISE APPLICATION TO NPI CHANNEL



KX - IDY TWO-WAY FOR FLATWISE APPLICATION TO NPI CHANNEL



Description	Code
KX IDY Support Set	2054590

Al Conductor		Cu Conductor		L		A		Order Code
Rated Current	Busway Code	Rated Current	Busway Code	(inch)	(mm)	(inch)	(mm)	
400	04	-	-	11.81	350	3.25	82.5	3113547
550	05	630	06			3.58	91	
-	-	800	08			3.78	96	
630	06	-	-			4.17	106	
-	-	1000	10			4.37	111	
800	08	1250	12			5.16	131	
1000	10	1350	14			5.75	146	
1300	13	1600	16			6.93	176	
1600	17	2000	20			8.70	221	
2000	20	-	-			11.06	281	
-	-	2000	22			9.92	252	
-	-	2500	26			11.10	282	
2500	25	3200	32			13.46	342	
-	-	4000	40			17.80	452	
3200	33	-	-			19.37	492	
4000	40	-	-			23.31	592	
-	-	5000	50	21.73	552			
-	-	6000	60	26.46	672			
5000	50	-	-	28.82	732			

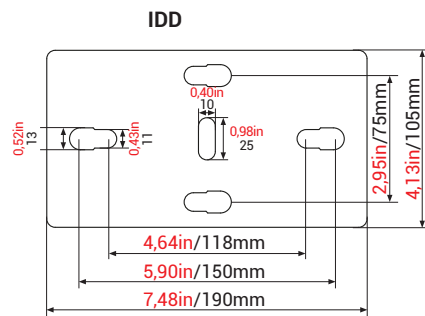
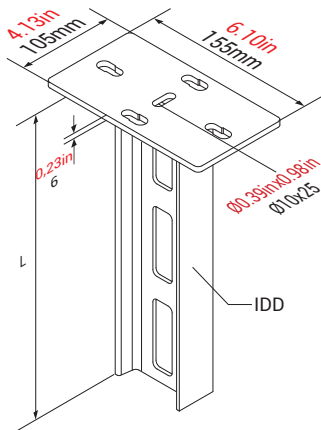
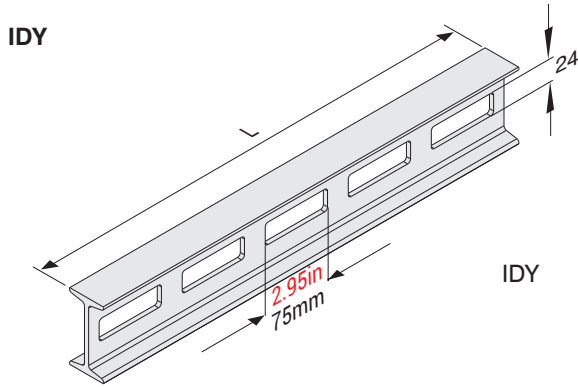
Al Conductor		Cu Conductor		L		A		Order Code	
Rated Current	Busway Code	Rated Current	Busway Code	(inch)	(mm)	(inch)	(mm)		
400	04	-	-	11.81	300	3.25	82.5	3113547	
550	05	630	06			3.58	91		
-	-	800	08			3.78	96		
630	06	-	-			4.17	106		
-	-	1000	10			4.37	111		
800	08	1250	12			5.16	131		
1000	10	1350	14		5.75	146			
1300	13	1600	16		6.93	176			
1600	17	2000	20		8.70	221	3113548		
2000	20	-	-		11.06	281			
-	-	2000	22		19.69	500	9.92	252	3113549
-	-	2500	26		11.10		282		
2500	25	3200	32		13.46		342		
-	-	4000	40		17.80	452			
3200	33	-	-		19.37	700	492	3134127	
4000	40	-	-		23.31		592		
-	-	5000	50	21.73	552				
-	-	6000	60	26.46	672	3113553			
5000	50	-	-	35.43	900		28.82	732	

■ The dimensions given above are minimum values. ■ All measures are given in inch. /mm

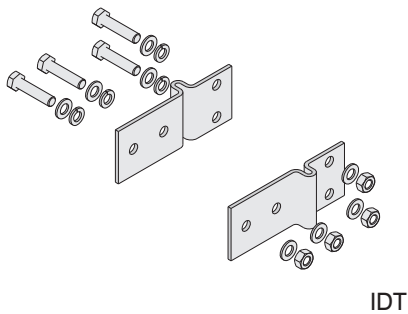
E-LINE KX-III

Fixing Elements

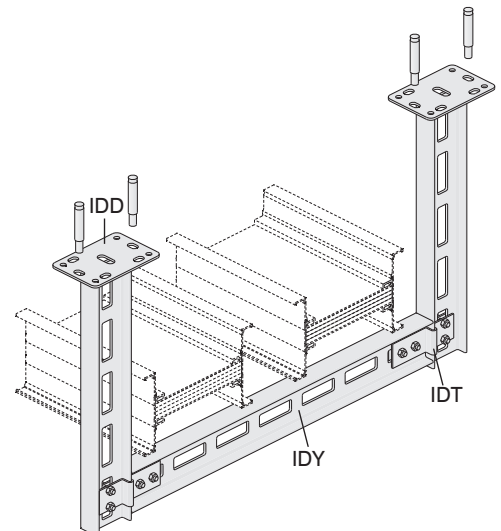
Supports



IDT



Description	L		Code
	(inch)	(mm)	
IDY 300	11.81	300	3008242
IDY 400	15.75	400	3008290
IDY 500	19.69	500	3008289
IDY 600	23.62	600	3008288
IDY 700	27.56	700	3008287
IDY 800	31.50	800	3008286
IDY 900	35.43	900	3008285
IDY 1000	39.37	1000	3008284
IDY 1100	43.31	1100	3008283
IDY 1200	47.24	1200	3008282
IDY 1300	51.18	1300	3008236
IDY 1400	55.12	1400	3008281
IDY 1500	59.06	1500	3008280
IDY 1600	62.99	1600	3008241
IDY 1700	66.93	1700	3008240
IDY 1800	70.87	1800	3008239
IDY 1900	74.80	1900	3008238
IDY 2000	78.74	2000	3008237
IDD 300	11.81	300	3008314
IDD 400	15.75	400	3008313
IDD 500	19.69	500	3008312
IDD 600	23.62	600	3008311
IDD 700	27.56	700	3008310
IDD 800	31.50	800	3008309
IDD 900	35.43	900	3008308
IDD 1000	39.37	1000	3008307
IDD 1100	43.31	1100	3008306
IDD 1200	47.24	1200	3008305
IDD 1300	51.18	1300	3008304
IDD 1400	55.12	1400	3008303
IDD 1500	59.06	1500	3008302
IDD 1600	62.99	1600	3008301
IDD 1700	66.93	1700	3008300
IDD 1800	70.87	1800	3008299
IDD 1900	74.80	1900	3008298
IDD 2000	78.74	2000	3008297
IDT Support Fitting	-	-	3008279



■ Please call us for non-standard components.

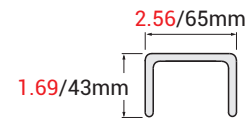
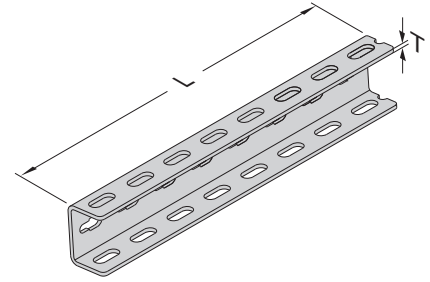
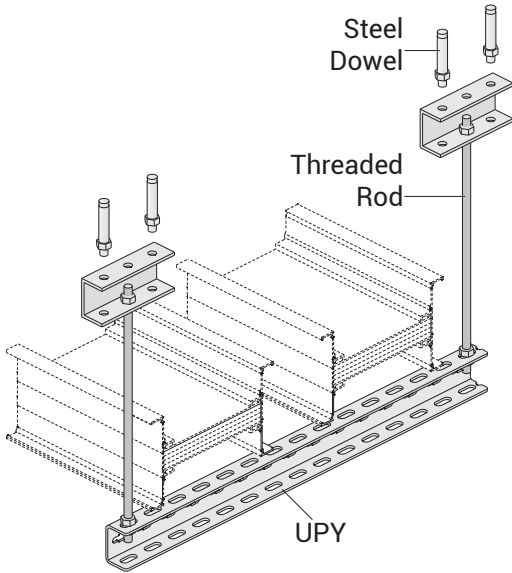
E-LINE KX-III

Fixing Elements

Supports



UPY



Description	T		L		Code
	(inch)/(mm)	(inch)	(inch)	(mm)	
UPY 300	0.16 / 4	11.81	300	3004487	
UPY 400	0.16 / 4	15.75	400	3004489	
UPY 500	0.16 / 4	19.69	500	3004491	
UPY 600	0.16 / 4	23.62	600	3004493	
UPY 700	0.16 / 4	27.56	700	3004495	
UPY 800	0.16 / 4	31.50	800	3004496	
UPY 900	0.16 / 4	35.43	900	3004497	
UPY 1000	0.16 / 4	39.37	1000	3004498	
UPY 1100	0.16 / 4	43.31	1100	3004499	
UPY 1200	0.16 / 4	47.24	1200	3004500	
UPY 1500	0.16 / 4	59.06	1500	3004503	

■ Please call us for non-standard components.

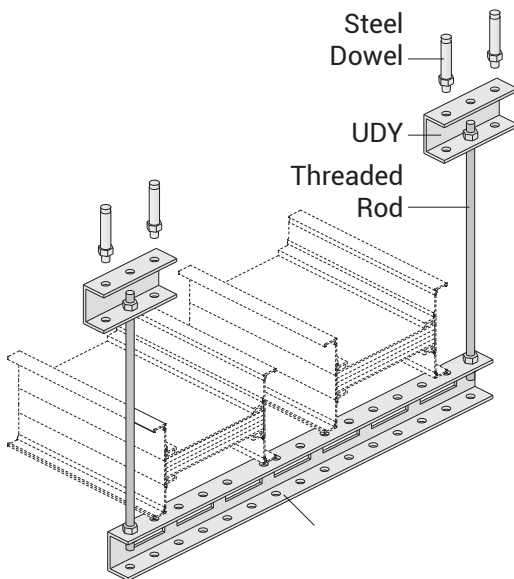
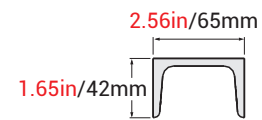
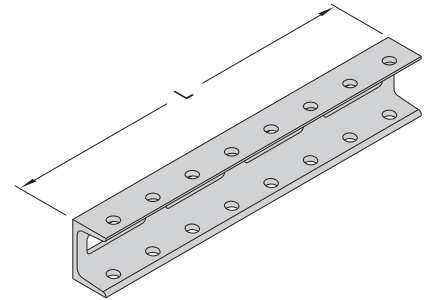
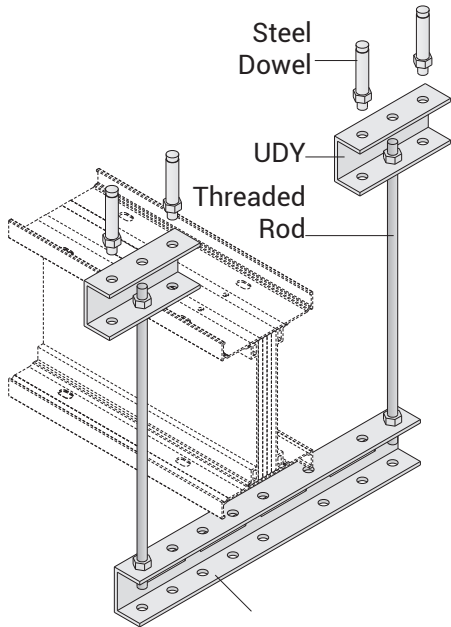
E-LINE KX-III

Fixing Elements

Supports



UDY



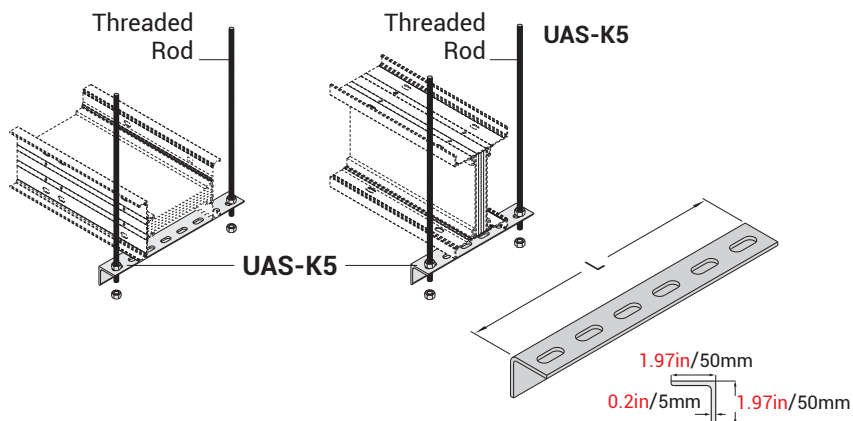
Description	L		Code
	(inch)	(mm)	
UDY 300	11.81	300	3008023
UDY 400	15.75	400	3008024
UDY 500	19.69	500	3008025
UDY 600	23.62	600	3008026
UDY 700	27.56	700	3008027
UDY 800	31.50	800	3008028
UDY 900	35.43	900	3008029
UDY 1000	39.37	1000	3008030
UDY 1100	43.31	1100	3008031
UDY 1200	47.24	1200	3008032
UDY 1300	51.18	1300	3008033
UDY 1400	55.12	1400	3008034
UDY 1500	59.06	1500	3008035
UDY 1600	62.99	1600	3008036
UDY 1700	66.93	1700	3008037
UDY 1800	70.87	1800	3008038
UDY 1900	74.80	1900	3008039
UDY 2000	78.74	2000	3008040

■ Please call us for non-standard components.

E-LINE KX-III

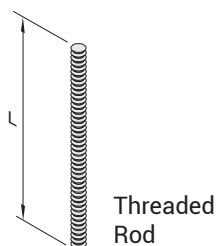
Fixing Elements

Supports

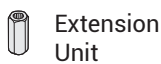


Supports

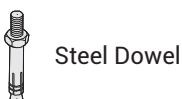
Description	L		Code
	(inch)	(mm)	
UAS-K5 SUPPORT (1)	7.87	200	3005324
UAS-K5 SUPPORT (2)	9.84	250	3005323
UAS-K5 SUPPORT (3)	11.81	300	3005322
UAS-K5 SUPPORT (4)	13.78	350	3005321
UAS-K5 SUPPORT (5)	15.75	400	3005320
UAS-K5 SUPPORT (6)	19.69	500	3005319
UAS-K5 SUPPORT (7)	23.62	600	3005318
UAS-K5 SUPPORT (8)	27.56	700	3005317
UAS-K5 SUPPORT (9)	43.31	1100	3005316



Threaded Rod



Extension Unit



Steel Dowel

Diameter of the hole to be drilled
M10.....Ø0.55in
M12.....Ø0.63in



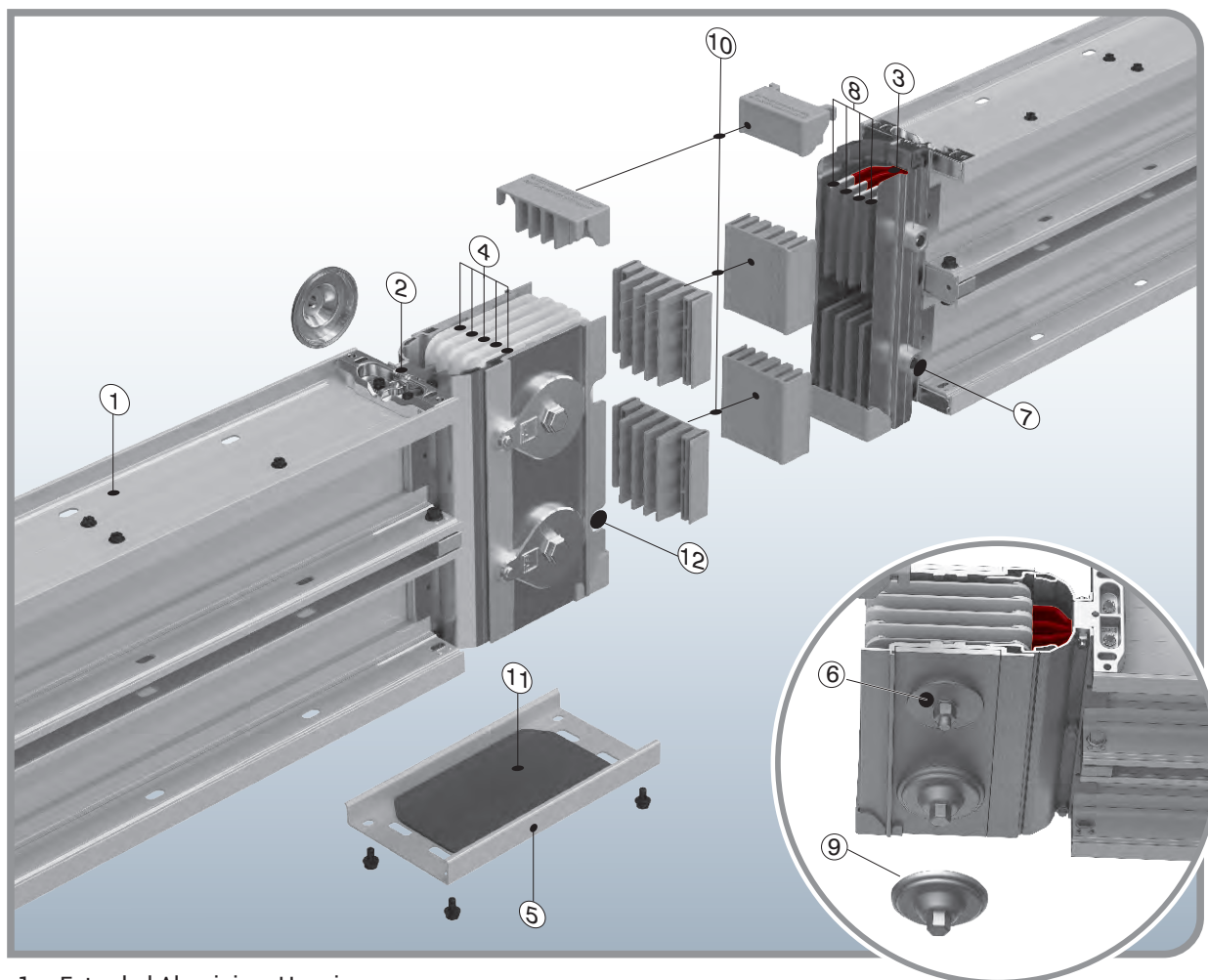
Steel Nut



Washer

Connection Units

Description	L		Code
	(inch)	(mm)	
BRA 12-05 Threaded Rod (M10)	19.69	500	5000037
BRA 12-10 Threaded Rod (M10)	39.37	1000	5000032
BRA 14-05 Threaded Rod (M12)	19.69	500	5000026
BRA 14-10 Threaded Rod (M12)	39.37	1000	5000034
BRA 13 Extension Unit (M10)	-	-	1004312
BRA 13 Extension Unit (M12)	-	-	1004282
BRA 9 Steel Dowel (M10)	-	-	5000023
BRA 9 Steel Dowel (M12)	-	-	5000022
M10 Steel Nut	-	-	1000522
M12 Steel Nut	-	-	1000964
M10 Washer	-	-	1000504
M12 Washer	-	-	1000505



1. Extruded Aluminium Housing
2. PE Fixing Piece
3. Insulation Layers (Epoxy+B class polyester film)
4. Joint Insulators
5. Joint Cover
6. Belleville
7. Alignment Pin (removable)
8. Conductors
9. IP55 Nut Locking Piece
10. Protection Plastic
11. IP55 Joint Cover Gasket
12. Alignment Pin Slot

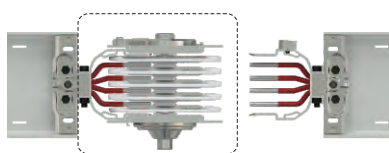


Figure 1 Block Joint

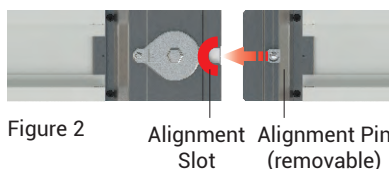


Figure 2 Alignment Slot Alignment Pin (removable)

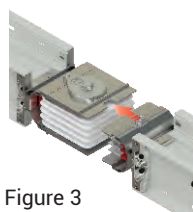


Figure 3



Figure 4 Joint assembly

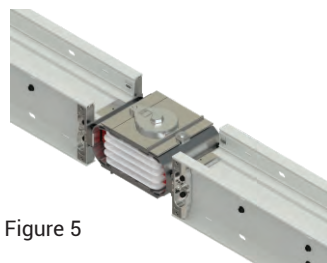


Figure 5

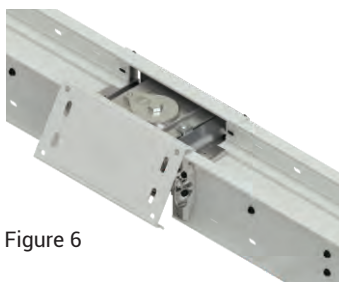
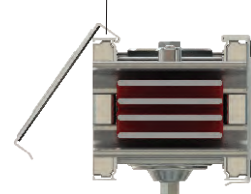


Figure 6

The joint cover is closed by leverage.



E-LINE KX-III

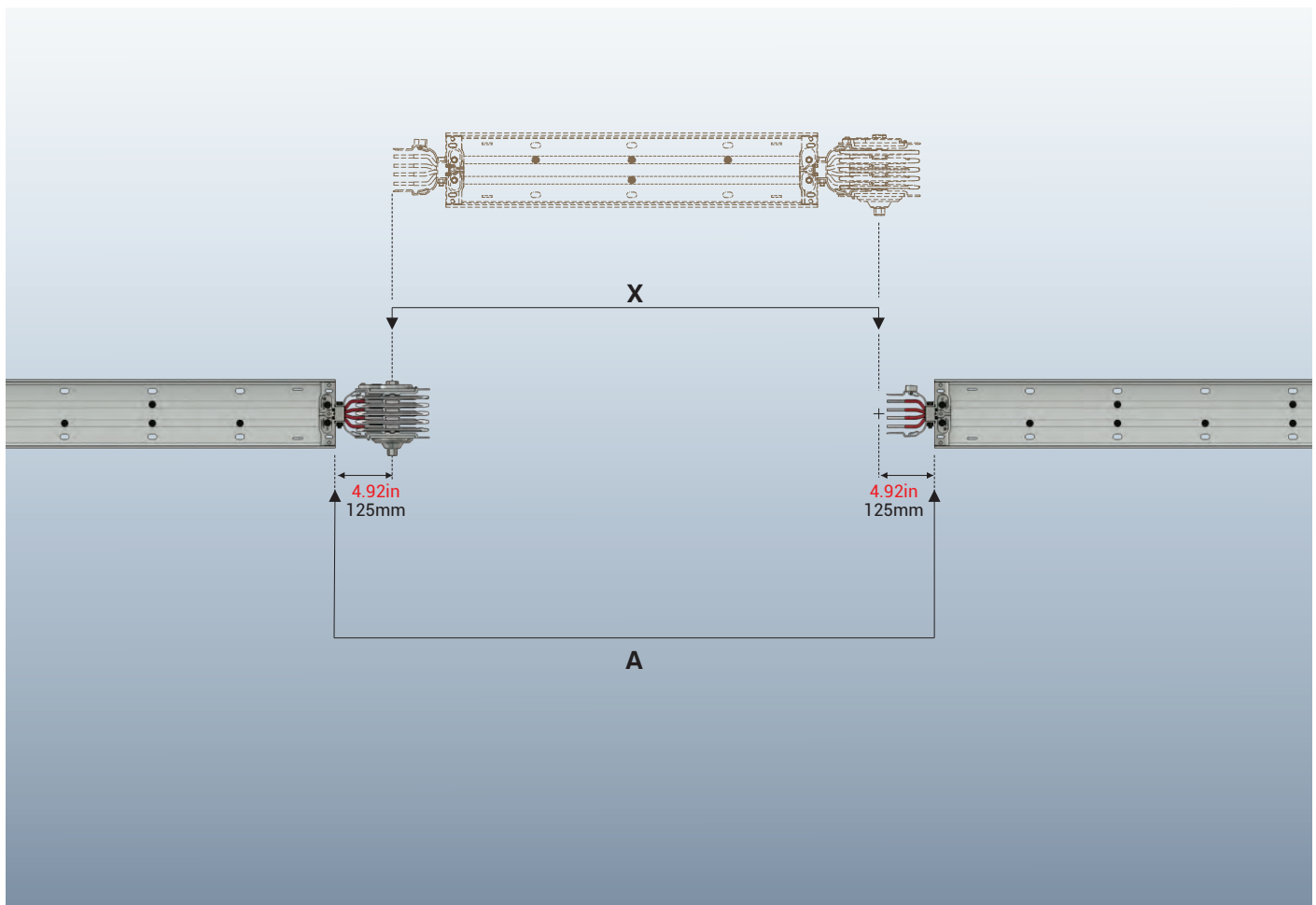
Measuring a Special Length



After installation of standard busway 9.84ft/3m lengths, you will be in need of special lengths which are smaller than 9.84ft/3m. The minimum length for these special elements can be 13.78in/350mm. Please measure the lengths of these modules as shown below.

Length A is measured between housing of 2 busways in mm/inch. A, The special length is calculated by deducting 9.84in/250mm from this measured length.

$X = A - 9.84\text{in}$ (250mm) X=Length of Special Busway (The busway module will be manufactured as per X value.)



CERTIFICATE OF COMPLIANCE

Certificate Number 20190816-E505448
Report Reference E505448-20190321
Issue Date 2019-AUGUST-16

Issued to: EAE ELEKTRIK ASANSOR END INS SAN VE TIC A S
Akcaburgaz Man 119 Sk 10, Esenyurt
34510 Istanbul TURKEY

This certificate confirms that representative samples of

BUSWAYS AND ASSOCIATED FITTINGS
Busway, series KXC-III followed by a two number designation between 06 through 60, followed by additional alpa numeric designations as noted in the nomenclature.
Busway, series KXA-III followed by a two number designation between 04 through 51, followed by additional alpa numeric designations as noted in the nomenclature

Have been investigated by UL in accordance with the Standard(s) indicated on this Certificate.

Standard(s) for Safety: UL 857 BUSWAYS
CSA C22.2 NO. 27-09 BUSWAYS

Additional Information: See the UL Online Certifications Directory at <https://iq.ulprospector.com> for additional information.

This *Certificate of Compliance* does not provide authorization to apply the UL Mark. Only the UL Follow-Up Services Procedure provides authorization to apply the UL Mark.

Only those products bearing the UL Mark should be considered as being UL Certified and covered under UL's Follow-Up Services.

Look for the UL Certification Mark on the product.



Bruce Mahrenholz, Director North American Certification Program
UL LLC

Any information and documentation involving UL Mark services are provided on behalf of UL LLC (UL) or any authorized licensees of UL. For questions, please contact a local UL Customer Service Representative at <http://ul.com/customer-service>



KX III-UL busway system allows users to distribute electrical energy safely with 46 years of experience in design and manufacturing of busway systems. **KX III-UL**, features flexible power supply, short installation time, superior heat dissipation and electrical characteristics. Where shown on plans, furnish and install a totally enclosed, low-impedance busway system of the indicated ratings with all necessary fittings, power takeoffs, hanging devices and accessories.

1- Standards & Certification

- **KX III-UL** Busway system has been designed and manufactured as per UL 857 standard, which requires below listed tests. Each busway rating has been type tested individually and comply with recent UL 857 standards for all type tests and certified by independent authorized testing laboratory as UL including below test:

- Compliant for: CUL Listing
- Compliant for: National Electric Code (NEC) Article 364 – Busways 19
- Compliant: NEMA AB1, Molded Case Circuit Breakers and Molded Case Switches
- Compliant: NFPA 70 – National Fire Protection Agency
- EAE has ISO 9001, ISO 14001, OSHA 18001, ISO 27001 and ISO 17025 certifications.
- All the required type tests for each rating according to IEC 61439-6 and certified with 3rd Party.
- Compliant: IEC 60364-1 Low-voltage electrical installations
- **KX III-UL** Busway has high flame resistance and circuit integrity properties under fire conditions according to IEC 60331, BS 6387, BS 8491 standards including joints and tap-off boxes.

2- Electrical Characteristics

- **KX III-UL** Busway systems nominal voltage is 600 V.
- Operating Frequency: 50/60 Hz
- 6 Cycle RMS Symmetrical Short Circuit Rating shall be:

For Aluminium Conductors;

- 400-630A : 50kA
- 800-1300A : 65kA
- 1600-2000A : 100kA
- 2500A : 125kA
- 3000A : 125kA
- 3200A : 200kA
- 4000A : 150kA
- 5000A : 200kA

For Copper Conductors;

- 630-1000A : 65kA
- 1250-2000A: 125kA
- 2000-6000A: 200kA

- Position: 100% rating for any horizontal or vertical orientation.
- The maximum hot-spot temperature rise at any point in the busway at continuous rated load shall not exceed 131 °F

3- Components

3.1- Housing

- **KX III-UL** Busway system has "Sandwich-Compact" structure. Conductors are packed and placed into the housing without leaving air gap in order to provide low reactance.
- The housing shall be RAL7035-Electrostatic painted extruded aluminum to provide maximum protection against corrosion from water and other contaminants normally encountered during construction.
- The busway housing shall be of 100% aluminum construction to reduce hysteresis and eddy current losses.
- Busway housing shall have optional powder coating finish if required per project design,
- "Compact structure of the housing has been provided by M6 screws applied at every 7.48 in along the entire length.
- The sandwich-compact structure continues at the plug-in points too. There isn't any air gap between conductors at the plug-in points.
- The housing material and paint are selected with non-propagating properties.

3.2- Conductors

- Conductors: Individual isolated and insulated. Aluminum or Copper conductors are epoxy coated. All phase and neutral conductors joints and contact surfaces are plated tin (optimal Silver).
- Straight sections of feeder busway can be supplied in any length, from a 12.00-inch (350 mm) minimum to a 10-feet (3048 mm) maximum
- Bus bars shall be suitably plated at all joints and contact surfaces.
- **KX III-UL** busway system has aluminum conductors between 400A – 5000A,
- **KX III-UL** busway system has copper conductors between 630A – 6000A,
- **KX III-UL** busway system has the following number of conductors and wire configuration;
 - 4½ Conductors: (4 full size conductors + PE (50% earth conductor + housing)).
 - 3 Conductors: (3 full size conductors+ PE (housing) conductors).
 - 4 Conductors: (4 full size conductors + PE (housing)).
 - 5 Conductors: (4 full size + CPE (%100 clean earth + housing)).
 - 5 Conductors: (4 full size conductors + PE (100% earth conductor + housing)).
- Phase conductors and neutral conductor have the same cross-section and they are insulated.
- Aluminum conductors are EC grade aluminum.
- The conductors may be ordered in copper (98% conductivity), Aluminium (58% conductivity).

3.3- Insulation

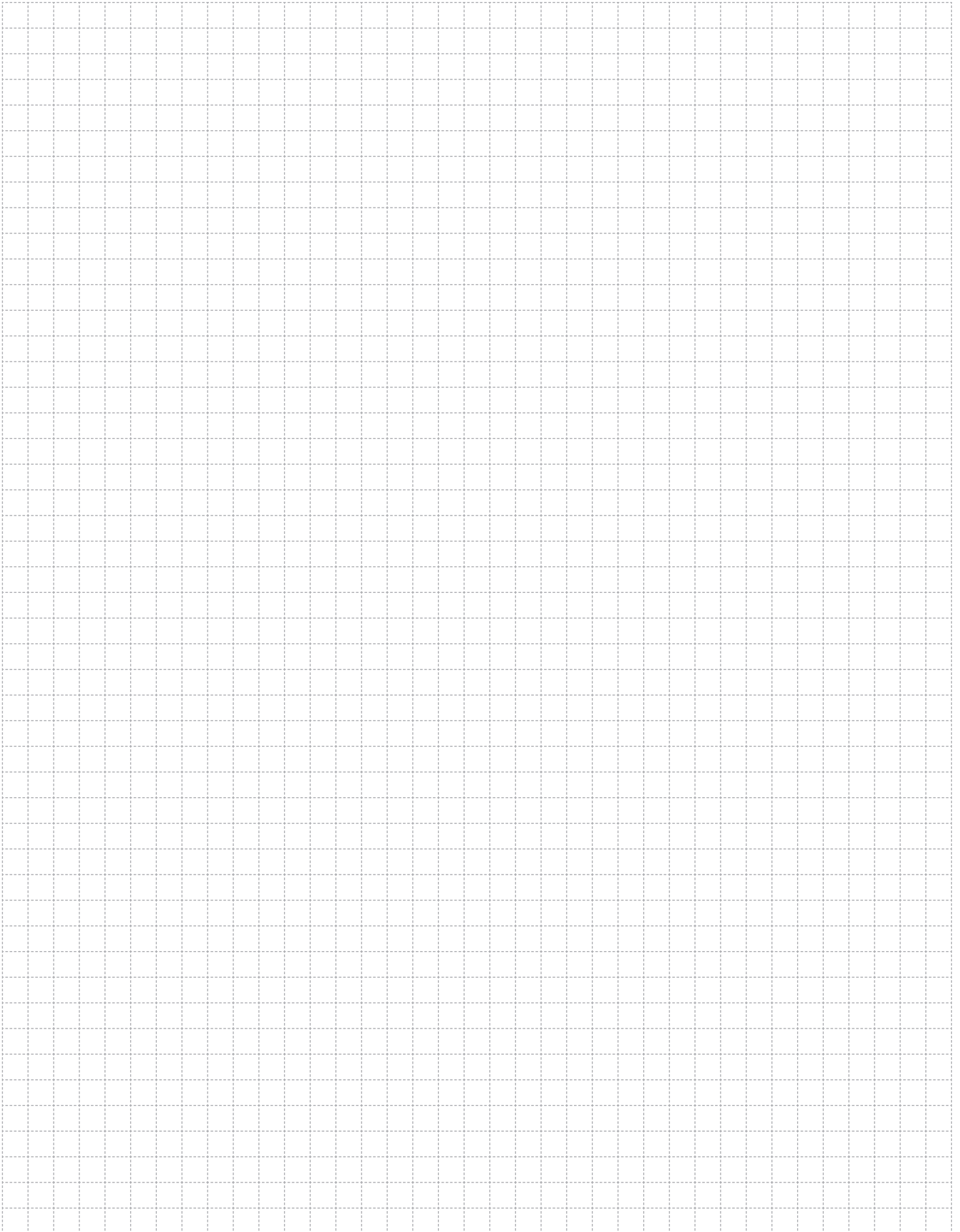
- Insulation system is suitable for 600 V continuous operation.
- Specially formulated Class B epoxy insulation has been applied as insulation material which provides high insulation resistance and high peak temperature resistance.
- The insulation process used is the spray insulation process which produces uniform application of the epoxy powder over the entire conductor bar. It is further enhanced by inline filter process and magnetic separator that help to eliminate contaminants common to fluidized bed systems.
- Epoxy is UL V0 class and halogen and toxic free properties.
- All insulators must be UL recognized.

3.4- Joint Structure

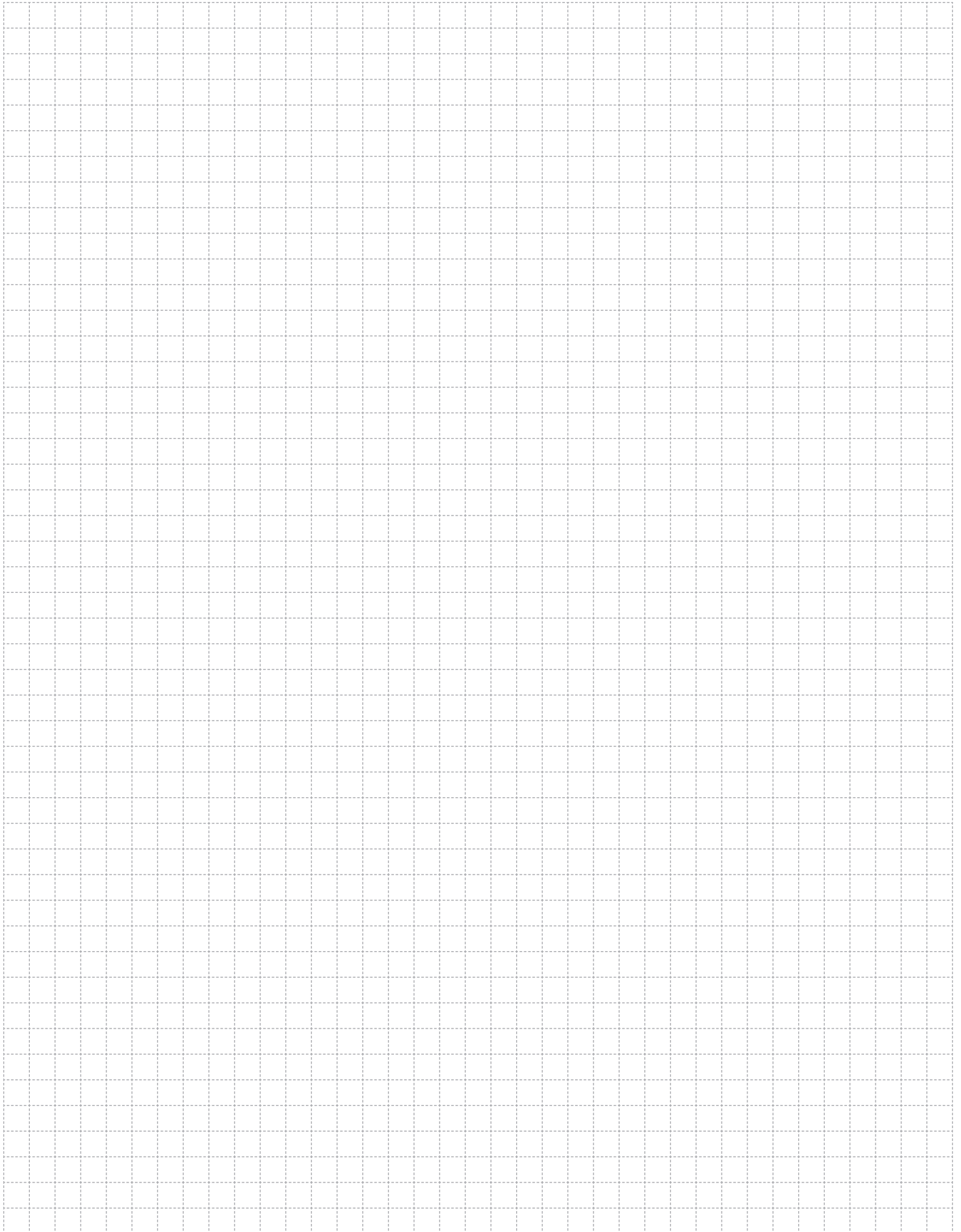
- **KX III - UL** Busway, ensures contact pressure at the joint by special EAE belleville spring washers.
- All parts of the joint structure are plated with tin against contact losses due to corrosion in order to get safe and reliable earth connections and have very low resistance values entire length.
- It shall be possible to make up a joint from one side in the event the busway is installed against a wall or ceiling. The joint shall be so designed as to allow removal of any length without disturbing adjacent lengths.

3.5- Accessories and Components

- All system components including Tees, flanges, Reducers, Expansion joints and Elbows etc. shall be of the same material from the same manufacturer.
- End pieces and end caps will be provided to install at the ends of each line.
- **KX III-UL** Busway system has all necessary accessories (elbows, offsets, panel-transformer connections, reductions, etc.) EAE supply special dimensioned units in short time, if the project conditions require.
- For horizontal runs, a horizontal expansion unit will be used at every 40m and at the building expansions.
- For vertical applications, a vertical expansion unit will be used at every floor. Busway system must be rigidly fixed by supports at every floor.
- Horizontal runs of busway shall be UL Listed for hanging on 10-foot (3.05 meters) centers in any position. Vertical riser runs of busway shall be supported with rigid hangers in positions indicated on plans (max 16/4.88 meters) centers.



A large grid area for taking notes, consisting of a 20x30 grid of small squares.

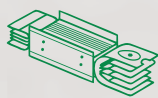


SUSTAINABLE FUTURE

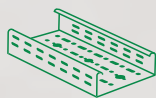
Sustainability Management at EAE Elektrik



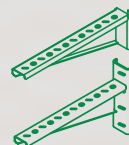
As part of our goal to support sustainable development and green transformation, measuring, evaluating, and managing all economic, environmental, and social impacts resulting from our sustainability practices is a key governance priority for EAE Elektrik. We act with great care in analyzing, monitoring, and managing the economic, environmental, and social impacts and risks that arise throughout our value chain in both our national and global operations.



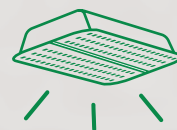
Busway Systems



Cable Tray Systems



Support Systems



Led Lighting

"We are working together with all our stakeholders to develop the electrical technologies that will build the future."

You can visit our sustainability website at sustainability.eaeelectric.com



#FutureTogether

EAE USA

2000 Mountain Industrial Blvd,
Tucker, GA 30084
Phone : +1(770)-6964803
Email : info@eaeusa.us



Please visit our website for the updated
version of our catalogues.
www.eaeusa.us



Catalogue 59 - USA / Rev.15 / .0 Pcs. / 21.04.2026
D.S.

EAE has full right to make any revisions or changes on this catalogue without any prior notice.