

COATINGS REFERENCE GUIDE

Products Formulated With the Highest-Quality Ingredients



PAINTS

Interior

DELUXE

NEW
SHEENS



EXQUISITE®

- :: Exceptional washability and stain resistance
- :: Unrivaled scuff and mar resistance

EXQUISITE is a line of deluxe, interior, acrylic paints meticulously engineered to be truly washable and stain, scuff, burnish and color rub-off resistant.

SHEEN	MATERIAL #	MAX VOC CONTENT	MAX RAVOC
Matte	EXQT10	Ultra-Low VOC (50 g/L)	30 g/L
Eggshell	EXQT30		25 g/L
Semi-Gloss	EXQT50		40 g/L

ULTRA-PREMIUM



EVEREST®

- :: Self-priming
- :: Low odor
- :: Exceptional hide and burnish resistance

EVEREST is a line of ultra-premium, zero VOC, interior, 100% acrylic paints.

SHEEN	MATERIAL #	MAX VOC CONTENT	MAX RAVOC
Flat	EVER10	Zero VOC (<5 g/L by ASTM Test Method D 6886)*	<3 g/L
Velvet	EVER20		
Eggshell	EVER30		
Semi-Gloss	EVER50		



SUPREMA®

- :: Exceptional hide and durability
- :: Superior stain and block resistance
- :: Great flow and leveling

SUPREMA is a line of ultra-premium, interior, acrylic paints.

SHEEN	MATERIAL #	MAX VOC CONTENT	MAX RAVOC
Flat	SPMA10	Ultra-Low VOC (50 g/L)	25 g/L
Velvet	SPMA20		30 g/L
Eggshell	SPMA30		25 g/L
Satin/Low Sheen	SPMA40		20 g/L
Semi-Gloss	SPMA50		

PREMIUM



SPARTAWALL®

- :: Superior hide and coverage
- :: Great flow and leveling
- :: Dries to a smooth, uniform finish

SPARTAWALL is a line of premium, interior, acrylic paints. Flat is ultra-low VOC; other sheens are zero VOC.

SHEEN	MATERIAL #	MAX VOC CONTENT	MAX RAVOC
Flat	SWLL10	Ultra-Low VOC (15 g/L)	10 g/L
Velvet	SWLL20	Zero VOC (2 g/L by ASTM Test Method D 6886)*	1 g/L
Eggshell	SWLL30		
Satin/Low Sheen	SWLL40		
Semi-Gloss	SWLL50		



SPARTAZERO®

- :: Zero VOC, very low odor
- :: Excellent hide and coverage
- :: Dries to a smooth, uniform finish

SPARTAZERO is a premium, zero VOC, low odor, interior, flat paint.

SHEEN	MATERIAL #	MAX VOC CONTENT	MAX RAVOC
Flat	SZRO10	Zero VOC (2 g/L by ASTM Test Method D 6886)*	1 g/L

PROFESSIONAL

NEW
BASES



ACRI-WALL®

- :: Very good touch-up and block resistance
- :: Self-priming on new drywall

ACRI-WALL is a line of professional, zero VOC, low odor, interior, latex paints.

SHEEN	MATERIAL #	MAX VOC CONTENT	MAX RAVOC
Flat RTU	ACWL10	Zero VOC (5 g/L by ASTM Test Method D 6886)*	5 g/L
Eggshell	ACWL30	ASTM Test Method D 6886)*	2 g/L
Semi-Gloss	ACWL50		4 g/L

PROFESSIONAL



SUPER-WALL®

- :: Good hide
- :: Good touch-up
- :: Self-priming on new drywall

SUPER-WALL is a professional, interior, latex flat paint.

SHEEN	MATERIAL #	MAX VOC CONTENT	MAX RAVOC
Flat	SWLR10	Ultra-Low VOC (50 g/L)	20 g/L



ULTRA-SCRUB®

- :: Very good washability and touch-up
- :: Good hide

ULTRA-SCRUB is a professional, scrubbable and washable, interior, latex flat paint.

SHEEN	MATERIAL #	MAX VOC CONTENT	MAX RAVOC
Flat	ULSB10	Ultra-Low VOC (50 g/L)	15 g/L



CONTRACTOR'S EDGE®

- :: Good hide and touch up
- :: Easy to apply
- :: Washable

CONTRACTOR'S EDGE is a line of professional, interior, acrylic paints.

SHEEN	MATERIAL #	MAX VOC CONTENT	MAX RAVOC
Flat	PMCE10	Ultra-Low VOC (50 g/L)	25 g/L
Eggshell	PMCE30		
Semi-Gloss	PMCE50		

*Zero VOC means 'No organic solvents added.' (Trace amounts of VOC may be present as residual components of other ingredients. Dunn-Edwards uses zero VOC colorants; other additives may increase VOC emissions.)

Interior

PROFESSIONAL

COMING
SOON



PRO-COM® 3500

- :: Very good hide
- :: Good touch-up
- :: Good sheen uniformity

PRO-COM 3500 is a line of professional, interior paints for commercial and multi-tenant housing properties.

SHEEN	MATERIAL #	MAX VOC CONTENT	MAX RAVOC
Flat	PC3510	Ultra-Low VOC (25 g/L)	10 g/L
Eggshell	PC3530	Ultra-Low VOC (30 g/L)	
Semi-Gloss	PC3550	Ultra-Low VOC (20 g/L)	

Exterior

ULTRA-PREMIUM



EVERSHIELD®

- :: Exceptional dirt pick-up resistance
- :: Outstanding gloss retention
- :: Superior non-blocking properties

EVERSHIELD is a line of ultra-premium, exterior, 100% acrylic paints.

SHEEN	MATERIAL #	MAX VOC CONTENT	MAX RAVOC
Flat	EVSH10	Ultra-Low VOC (50 g/L)	25 g/L
Velvet	EVSH20		20 g/L
Eggshell	EVSH30		25 g/L
Satin/Low Sheen	EVSH40		30 g/L
Semi-Gloss	EVSH50		30 g/L
Gloss	EVSH60		20 g/L

PREMIUM



SPARTASHIELD®

- :: Excellent hide and durability
- :: Dries to a smooth, uniform finish
- :: Applies easily

SPARTASHIELD is a line of premium, exterior, 100% acrylic paints.

SHEEN	MATERIAL #	MAX VOC CONTENT	MAX RAVOC
Flat	SSHL10	Ultra-Low VOC (50 g/L)	25 g/L
Velvet	SSHL20	Ultra-Low VOC (45 g/L)	
Eggshell	SSHL30	Ultra-Low VOC (45 g/L)	
Satin/Low Sheen	SSHL40	Ultra-Low VOC (50 g/L)	35 g/L
Semi-Gloss	SSHL50	Ultra-Low VOC (45 g/L)	30 g/L
Gloss	SSHL60	Ultra-Low VOC (50 g/L)	25 g/L

PROFESSIONAL

NEW 100%
ACRYLIC SHEENS



ACRI-HUES®

- :: Very good hide and durability
- :: Dries to a smooth, uniform finish
- :: Applies easily

ACRI-HUES is a line of professional, exterior, 100% acrylic paints.

SHEEN	MATERIAL #	MAX VOC CONTENT	MAX RAVOC
Flat	ACHS10	Ultra-Low VOC (50 g/L)	20 g/L
Eggshell	ACHS30		15 g/L
Semi-Gloss	ACHS50		15 g/L



ACRI-BUILD®

- :: Good hide and durability
- :: Dries to a smooth, uniform finish
- :: Applies easily

ACRI-BUILD is a professional, exterior, 100% acrylic flat paint.

SHEEN	MATERIAL #	MAX VOC CONTENT	MAX RAVOC
Flat	ACBL10	Ultra-Low VOC (50 g/L)	15 g/L

NEW SHEEN
COMING SOON



PRO-COM® 6500

- :: Good wet and dry hide
- :: Good touch-up
- :: Applies easily

PRO-COM 6500 is a line of professional, exterior, 100% acrylic paints for commercial and multifamily properties.

SHEEN	MATERIAL #	MAX VOC CONTENT	MAX RAVOC
Flat	PC6510	Ultra-Low VOC (40 g/L)	10 g/L
Satin/Low Sheen	PC6540	Ultra-Low VOC (50 g/L)	15 g/L

Interior/Exterior

ULTRA-PREMIUM



ARISTOSHIELD®

- :: Excellent flow and leveling
- :: Superior balance of hardness and flexibility
- :: Direct-to-metal coating on properly prepared surfaces

ARISTOSHIELD is a line of ultra-premium, interior/exterior paints formulated with advanced water-based urethane alkyd technology for an oil-like finish.

SHEEN	MATERIAL #	MAX VOC CONTENT	MAX RAVOC
Eggshell	ASHL30	Ultra-Low VOC (50 g/L)	50 g/L
Satin/Low Sheen	ASHL40		
Semi-Gloss	ASHL50		
High Gloss	ASHL70		

PROFESSIONAL



VERSA Series

- :: Excellent touch-up
- :: Good hide and durability

VERSA Series is a line of professional, interior/exterior, latex paints.

SHEEN	MATERIAL #	MAX VOC CONTENT	MAX RAVOC
Flat	W6240V	Ultra-Low VOC (50 g/L)	20 g/L
Velvet	W6230E		
Satin/Low Sheen	W6250E		
Semi-Gloss	W6160E		
Gloss	W6220E		25 g/L

PRIMERS

Interior



DRYWALL



VINYLASTIC® Premium

- :: Excellent sealing qualities
- :: Excellent hide
- :: Excellent enamel holdout

VINYLASTIC Premium is a zero VOC, interior, acrylic wall sealer for new drywall.

MATERIAL #	MAX VOC CONTENT	MAX RAVOC
VNPR00	Zero VOC (5 g/L by ASTM Test Method D 6886)*	5 g/L



VINYLASTIC® Select

- :: Very good sealing qualities

VINYLASTIC Select is a zero VOC, interior, latex wall sealer for new drywall.

MATERIAL #	MAX VOC CONTENT	MAX RAVOC
VNSL00	Zero VOC (4 g/L by ASTM Test Method D 6886)*	4 g/L



VINYLASTIC® Plus

- :: Good hide and coverage
- :: Easy to apply

VINYLASTIC Plus is an interior, latex wall sealer designed for use on a Level 5 drywall finish.

MATERIAL #	MAX VOC CONTENT	MAX RAVOC
VNPL00	Low VOC (95 g/L)	50 g/L

Exterior



DRYWALL

COMING
SOON



PRO-COM® High Build Primer-Sealer

- :: Helps hide defects such as minor sanding grooves, nicks, pinholes, paper fuzz
- :: Provides a smooth and uniform surface for the topcoat

PRO-COM High Build Primer-Sealer combines skim coating and priming into one step to minimize surface imperfections and achieve a Level 5 finish.

MATERIAL #	MAX VOC CONTENT	MAX RAVOC
PCHB00	Ultra-Low VOC (50 g/L)	



WOOD SIDING



EZ-PRIME® Premium

- :: Excellent tannin stain resistance
- :: Excellent hide and coverage
- :: Excellent enamel holdout

EZ-PRIME Premium is an exterior, wood primer, ideally suited for redwood and cedar.

MATERIAL #	MAX VOC CONTENT	MAX RAVOC
EZPR00	Ultra-Low VOC (50 g/L)	20 g/L



EZ-PRIME® Select

- :: Very good tannin stain resistance
- :: Very good hide, coverage and enamel holdout

EZ-PRIME Select is an exterior wood primer, ideally suited for redwood and cedar.

MATERIAL #	MAX VOC CONTENT	MAX RAVOC
EZSL00	Ultra-Low VOC (50 g/L)	25 g/L

Interior/Exterior



METAL



BLOC-RUST® Premium

- :: Excellent corrosion resistance and adhesion
- :: Very good hide

BLOC-RUST Premium is an interior/exterior, rust preventative primer for ferrous metals.

MATERIAL #	MAX VOC CONTENT	MAX RAVOC
BRPR00-2-WH BRPR00-2-RO	Ultra-Low VOC (50 g/L)	40 g/L

Available in Red Oxide (for heavy rust and dark-colored topcoats) and White (for light rust and light-colored topcoats).



MASONRY



EFF-STOP® Premium

- :: Excellent efflorescence and alkali resistance
- :: Superior adhesion

EFF-STOP Premium is an interior/exterior, epoxy-fortified acrylic primer/sealer for masonry.

MATERIAL #	MAX VOC CONTENT	MAX RAVOC
ESPR00	Ultra-Low VOC (50 g/L)	5 g/L



EFF-STOP® Select

- :: Very good alkali and efflorescence resistance

EFF-STOP Select is an interior/exterior, 100% acrylic primer/sealer for masonry.

MATERIAL #	MAX VOC CONTENT	MAX RAVOC
ESSL00	Ultra-Low VOC (50 g/L)	30 g/L

*Zero VOC: means 'No organic solvents added.' (Trace amounts of VOC may be present as residual components of other ingredients. Dunn-Edwards uses zero VOC colorants; other additives may increase VOC emissions.)

Interior/Exterior | Continued




FLEX-PRIME® Select

- :: Bridges hairline cracks in masonry surfaces
- :: Very good alkali and efflorescence resistance

FLEX-PRIME Select is an interior/exterior, crack-resistant, latex primer for masonry.

MATERIAL #	MAX VOC CONTENT	MAX RAVOC
FPSL00	Ultra-Low VOC (50 g/L)	25 g/L




Smooth BLOCFIL™ Premium

- :: Very good alkali resistance
- :: Fills and bridges voids and cracks
- :: Prevents water penetration

Smooth BLOCFIL Premium is an interior/exterior, 100% acrylic latex, heavy-bodied filler for porous concrete block.

MATERIAL #	MAX VOC CONTENT	MAX RAVOC
SBPR00	Low VOC (65 g/L)	40 g/L

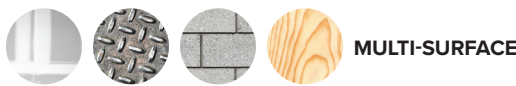


Smooth BLOCFIL™ Select

- :: Fills and bridges voids and cracks
- :: Prevents water penetration
- :: Improves appearance

Smooth BLOCFIL Select is an interior/exterior, latex, heavy-bodied filler for porous concrete block.

MATERIAL #	MAX VOC CONTENT	MAX RAVOC
SBSL00	Ultra-Low VOC (50 g/L)	35 g/L




ULTRA-GRIP® Premium

- :: Outstanding stain blocking
- :: Tannin stain resistant
- :: Excellent adhesion

ULTRA-GRIP Premium is an interior/exterior, acrylic, multi-surface primer.

MATERIAL #	MAX VOC CONTENT	MAX RAVOC
UGPR00	Ultra-Low VOC (50 g/L)	20 g/L



ULTRA-GRIP® Select

- :: Excellent adhesion
- :: Great hide and enamel holdout

ULTRA-GRIP Select is a zero VOC, interior/exterior, acrylic, multi-surface primer.

MATERIAL #	MAX VOC CONTENT	MAX RAVOC
UGSL00	Zero VOC (3 g/L by ASTM Test Method D 6886)*	1 g/L

COMING SOON



PRO-COM® Multi-Purpose Primer

- :: Great adhesion
- :: Very good stain blocking
- :: Very good hide

PRO-COM Multi-Purpose Primer is an interior/exterior, ultra-low VOC, multi-surface primer, ideal for commercial and multifamily properties.

MATERIAL #	MAX VOC CONTENT	MAX RAVOC
PCMP00	Ultra-Low VOC (50 g/L)	




PRO-COM® 6500

- :: Good alkali and efflorescence resistance
- :: Can be applied to masonry surfaces with a pH up to 13

PRO-COM 6500 Masonry Primer is an interior/exterior, acrylic primer for masonry. Ideal for commercial and multifamily properties.

MATERIAL #	MAX VOC CONTENT	MAX RAVOC
PCMA00	Ultra-Low VOC (50 g/L)	25 g/L



CONTRACTOR'S EDGE®

- :: Multi-purpose
- :: Excellent adhesion
- :: Low odor

CONTRACTOR'S EDGE is an interior/exterior, multi-purpose primer.

MATERIAL #	MAX VOC CONTENT
CE-352957-2	Low VOC (<100 g/L)**

**As supplied

SPECIALTY COATINGS

Paints & Stain



AQUAFALL® Dry Fall Coatings

- :: Excellent adhesion to galvanized heating ducts, foil-wrapped ducts, steel girders, masonry and wood
- :: Great coverage and easy application

AQUAFALL is a line of premium, fast-drying, waterborne dry fall (dry fog) coatings designed for interior ceilings and overhead surfaces.

SHEEN	MATERIAL #	MAX VOC CONTENT	MAX RAVOC
Flat	AQUA10	Ultra-Low VOC (35 g/L)	10 g/L
Eggshell	AQUA30	Ultra-Low VOC (50 g/L)	20 g/L
Semi-Gloss	AQUA50		



CEILING PAINT Dead Flat

- :: Exceptional hide
- :: Spatter-resistant formulation
- :: Excellent sheen uniformity
- :: Outstanding touch-up performance

CEILING PAINT is a premium, zero VOC, low odor, interior paint ideal for use on residential, commercial and institutional projects where a dead flat ceiling paint is required.

SHEEN	MATERIAL #	MAX VOC CONTENT	MAX RAVOC
Dead Flat	CEIL10	Zero VOC (4 g/L by ASTM Test Method D 6886)*	3 g/L



DECOGLO® Cabinet, Door & Trim Paints

- :: Exceptional film hardness
- :: Scuff and chemical resistant
- :: Fast drying and block resistant
- :: Excellent flow and leveling

DECOGLO is a line of ultra-premium, interior, urethane-modified acrylic cabinet, door and trim paints.

SHEEN	MATERIAL #	MAX VOC CONTENT	MAX RAVOC
Eggshell	DGLO30	Ultra-Low VOC (50 g/L)	40 g/L
Semi-Gloss	DGLO50		



ENDURALASTIC® 5 Elastomeric Wall Coating

- :: Excellent elasticity and elongation
- :: Very good crack-bridging properties
- :: Waterproofs against wind-driven rain

ENDURALASTIC 5 is a premium, exterior, 100% acrylic elastomeric wall coating.

SHEEN	MATERIAL #	MAX VOC CONTENT	MAX RAVOC
Flat	EDLV10	Ultra-Low VOC (50 g/L)	25 g/L



ENDURALASTIC® 10 Elastomeric Wall Coating

- :: Superior elasticity and elongation
- :: Excellent crack-bridging properties
- :: Waterproofs against wind-driven rain

ENDURALASTIC 10 is an ultra-premium, exterior, 100% acrylic elastomeric wall coating.

SHEEN	MATERIAL #	MAX VOC CONTENT	MAX RAVOC
Flat	EDLX10	Ultra-Low VOC (50 g/L)	25 g/L



VIN-L-STRIPE® Zone Marking Paints

- :: Dries very fast and has excellent adhesion
- :: Exceptional resistance to weather, rubber-tired vehicles and foot traffic

VIN-L-STRIPE is a line of premium, fast-drying, exterior, waterborne acrylic traffic paints designed for use on asphalt and concrete roads, curbs, parking lots, driveways, airfields and helicopter landing pads.

SHEEN	MATERIAL #	MAX VOC CONTENT	MAX RAVOC
Flat	VSZM10	Low VOC (75 g/L)**	15 g/L
Velvet	VSZM20	Low VOC (100 g/L)**	20 g/L

**As supplied

new

COMING
SOON



SOLID-COLOR Deck, Fence & Siding Stain

- :: Very good protection from UV and water damage
- :: Resists cracking and peeling
- :: Tintable in 50 transformative colors

SOLID-COLOR is a water-based, 100% acrylic matte stain designed to resist UV and water damage.

SHEEN	MATERIAL #	MAX VOC CONTENT	MAX RAVOC
Matte	STSE10	Ultra-Low VOC (50 g/L)	35 g/L



PORCH & FLOOR Concrete & Wood Coating

- :: Excellent adhesion
- :: Resists UV and water damage
- :: Resists scuffs and abrasions

PORCH & FLOOR is a 100% acrylic formula, engineered to protect exterior surfaces from water damage, scuffing and the sun's harmful UV rays.

SHEEN	MATERIAL #	MAX VOC CONTENT	MAX RAVOC
Eggshell	PCFL30	Ultra-Low VOC (50 g/L)	35 g/L

*Zero VOC means 'No organic solvents added.' (Trace amounts of VOC may be present as residual components of other ingredients. Dunn-Edwards uses zero VOC colorants; other additives may increase VOC emissions.)

Primers



STAIN-BLOCKING



WOOD



DRYWALL



BLOCK-IT®

- :: Blocks tough stains
- :: Excellent adhesion
- :: Good sandability

BLOCK-IT is a high-hiding, stain-blocking, interior/exterior primer.

MATERIAL #	MAX VOC CONTENT	MAX RAVOC
BIPR00	Ultra-Low VOC (50 g/L)	45 g/L



**DECOPRIME®**

- :: Fast drying
- :: Exceptional sandability, adhesion and enamel holdout

DECOPRIME is a premium, interior, water-based primer for wood and hardboard.

MATERIAL #	MAX VOC CONTENT	MAX RAVOC
DCPR00	Ultra-Low VOC (50 g/L)	15 g/L



PREP-WALL™

- :: Provides a smooth and sandable surface
- :: Minimizes texture variations from drywall face paper

PREP-WALL is a professional interior surface conditioner/primer that improves the quality of the drywall finish.

MATERIAL #	MAX VOC CONTENT	MAX RAVOC
PRWL00	Ultra-Low VOC (25 g/L)	10 g/L



MASONRY/
BONDING
PRIMER



CHALK-BINDING



SUPER-LOC®

- :: Excellent adhesion
- :: Excellent alkali and efflorescence resistance
- :: Easy to apply

SUPER-LOC is a high-performance, interior/exterior masonry/bonding primer for difficult-to-paint surfaces.

MATERIAL #	MAX VOC CONTENT	MAX RAVOC
SLPR00	Ultra-Low VOC (50 g/L)	25 g/L



SURFACO®

- :: Excellent adhesion to chalky surfaces
- :: Good alkali and efflorescence resistance
- :: Low odor

SURFACO is a chalk-binding, interior/exterior primer that provides excellent adhesion on previously painted chalky surfaces.

MATERIAL #	MAX VOC CONTENT	MAX RAVOC
SFSL00	Ultra-Low VOC (10 g/L)**	3 g/L

**As supplied



Body: Warm White (DEW380) • Metalwork: Oasis (DET546)

LIGHT-DUTY INDUSTRIAL COATINGS

Paints



ENDURA-COAT®

DTM Acrylic Coatings

- :: Outstanding corrosion resistance
- :: Excellent adhesion
- :: Direct-to-metal application

ENDURA-COAT® is a line of interior/exterior, high-performance, single-component, water-based, acrylic industrial maintenance coatings.

SHEEN	MATERIAL #	MAX VOC CONTENT	MAX RAVOC
Eggshell	ENCT30	Low VOC (100 g/L)	55 g/L
Semi-Gloss	ENCT50		
Gloss	ENCT60		

**For Professional Use Only. Not for residential use in California.*



ENDURACAT®

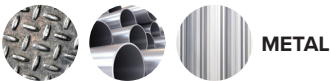
Pre-Catalyzed Water-Based Epoxy

- :: Superior adhesion
- :: Excellent chemical resistance and washability

ENDURACAT is an interior, high-performance, single-component, water-based, pre-catalyzed, industrial maintenance epoxy.

SHEEN	MATERIAL #	MAX VOC CONTENT	MAX RAVOC
Semi-Gloss	ENPX50	Ultra-Low VOC (50 g/L)	20 g/L

Primers



ENDURAPRIME®

Ferrous Metal

- :: Corrosion resistant
- :: Superior adhesion
- :: Fast drying

ENDURAPRIME is an interior/exterior high-performance, single-component, water-based, acrylic metal primer.

MATERIAL #	MAX VOC CONTENT	MAX RAVOC
ENPR00	Ultra-Low VOC (50 g/L)	30 g/L



ULTRASHIELD®

Galvanized Metal

- :: Excellent adhesion and application properties
- :: Good corrosion resistance

ULTRASHIELD Galvanized Metal is an interior/exterior, high-performance, very low odor, single-component, water-based, acrylic, galvanized-metal primer.

MATERIAL #	MAX VOC CONTENT	MAX RAVOC
ULGM00	Ultra-Low VOC (50 g/L)	20 g/L

AN ENVIRONMENTALLY CONSCIOUS PAINT COMPANY



LEED® Gold-certified paint manufacturing facility

In 2011, Dunn-Edwards opened the world's first LEED Gold-certified paint manufacturing facility in Phoenix, AZ. Encompassing manufacturing, product development, quality control and more, the 336,000-sq-ft. facility was designed to be the greenest in the industry.

"LEED" and related logo is a trademark owned by the U.S. Green Building Council and is used with permission.



Products bearing this logo are EG-FREE™ and TAC/HAP-free

Ethylene Glycol (EG),

a solvent often used in water-based paints, is listed as a Toxic Air Contaminant (TAC) and Hazardous Air Pollutant (HAP). In 1983, Dunn-Edwards was the first in the industry to voluntarily replace EG with propylene glycol, a nontoxic alternative "generally regarded as safe" by the FDA. Also, every Dunn-Edwards product with the EG-FREE logo is formulated without any other TAC or HAP.



Metal + Trim: Silver Spoon (DE6366) • Walls + Pillars: Igloo (DEW379)

PROJECT HIGHLIGHTS



UPS DISTRIBUTION CENTER ADDITION

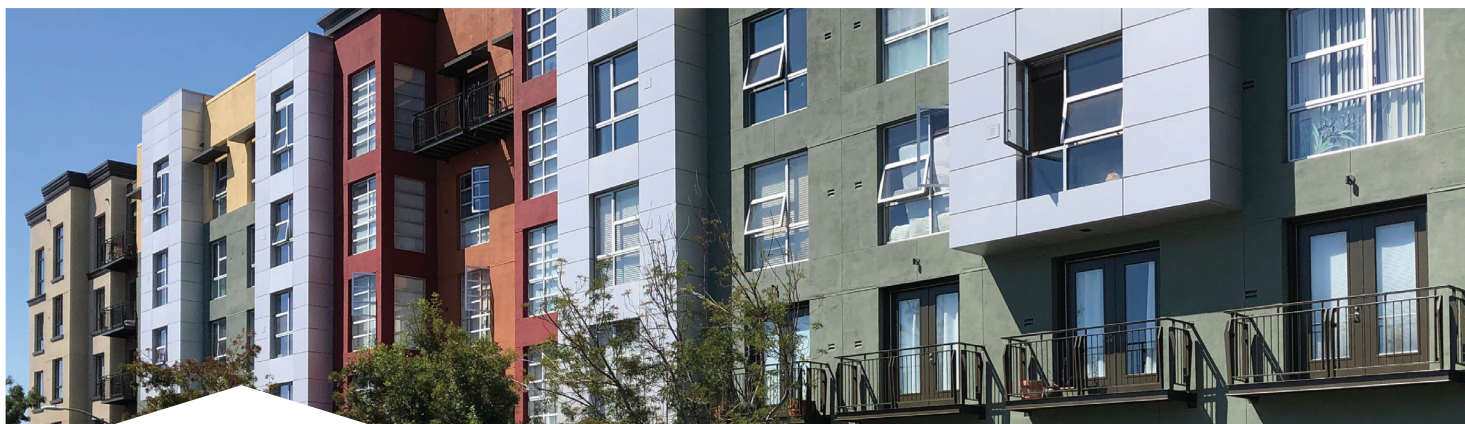
“We have a liaison we work hand-in-hand with at the Dunn-Edwards® store in its manufacturing facility. It’s more like a concierge service we have with them.”

—Danny Thomas

This project had numerous add-ons and extensions involving painting 350,000 sq. ft. of added space to an existing 600,000-sq.-ft. site to expand capabilities and capacity. A roughly 3-mile-long concrete wall was also built around the building. In total, the concrete tilt-up project involved more than 6,500 gallons of paint. The teams used Dunn-Edwards ACRI-HUES® flat paint for all exterior concrete and masonry wall surfaces, ARISTOSHIELD® paint in semi-gloss for all metal, and SPARTAWALL® paint in eggshell on all interior drywall work. With large jobs that have shifting needs and numerous add-ons, the ability to deliver the right product on time is key to the project going smoothly. Having a supplier that’s on their game helps.



Ganado Painting & Wallcovering
Cesar Palacios & Danny Thomas
Co-owners



MARKET SQUARE CONDOMINIUMS

“Sometimes, even if Dunn-Edwards is not spec’d on the project, for certain situations like metal surfaces, we’ll ask to use their product instead. The quality is just that good.”

The repaint of Market Square, a 5-story building taking up an entire city block, involved all of the building’s stucco, metal railings and trim. The 8-man crew worked in tight spaces and operated a boom lift in heavy pedestrian and vehicular traffic, so the job required considerable preparation and planning. Paint deliveries demanded clear communication and on-time delivery—with no hiccups. Among the job’s challenges was Schaper’s Representative being tasked with matching 13 colors from a diverse palette to Dunn-Edwards colors, which was executed perfectly. They used flat and semi-gloss SPARTASHIELD® exterior paint, and the customer commented on how good the project looked. “It’s the highest-quality paint out there and it just makes us all look good,” Schaper says.



C&A Painting
Curtis Schaper
Partner




PAINT SELECTION GUIDE

● Deluxe
● Ultra-Premium
● Premium
● Professional

PRODUCT NAME	VOC CONTENT*	QUALITY	MATERIAL #							
INTERIOR			FLAT	MATTE	VELVET	EGGSHELL	SATIN/ LOW SHEEN	SEMI-GLOSS	GLOSS	HIGH GLOSS
EXQUISITE NEW SHEENS	50 g/L	●		EXQT10		EXQT30		EXQT50		
EVEREST	Zero VOC	●	EVER10		EVER20	EVER30		EVER50		
SUPREMA	50 g/L	●	SPMA10		SPMA20	SPMA30	SPMA40	SPMA50		
SPARTAWALL	Flat: 15 g/L Other Sheens: Zero VOC	●	SWLL10		SWLL20	SWLL30	SWLL40	SWLL50		
SPARTAZERO	Zero VOC	●	SZRO10							
ACRI-WALL NEW BASES	Zero VOC	●	ACWL10 (RTU)			ACWL30		ACWL50		
SUPER-WALL	50 g/L	●	SWLR10							
ULTRA-SCRUB	50 g/L	●	ULSB10							
CONTRACTOR'S EDGE	50 g/L	●	PMCE10			PMCE30		PMCE50		
PRO-COM 3500 COMING SOON	20-30 g/L	●	PC3510			PC3530		PC3550		
EXTERIOR										
EVERSHIELD	50 g/L	●	EVSH10		EVSH20	EVSH30	EVSH40	EVSH50	EVSH60	
SPARTASHIELD	45-50 g/L	●	SSHL10		SSHL20	SSHL30	SSHL40	SSHL50	SSHL60	
ACRI-HUES NEW 100% ACRYLIC SHEENS	50 g/L	●	ACHS10			ACHS30		ACHS50		
ACRI-BUILD	50 g/L	●	ACBL10							
PRO-COM 6500 NEW SHEEN COMING SOON	40-50 g/L	●	PC6510				PC6540			
INTERIOR/EXTERIOR										
ARISTOSHIELD	50 g/L	●				ASHL30	ASHL40	ASHL50		ASHL70
VERSA Series	50 g/L	●	W6240V		W6230E		W6250E	W6160E	W6220E	
SPECIALTY										
AQUAFALL Dry Fall Coating	35-50 g/L		AQUA10			AQUA30		AQUA50		
CEILING PAINT Dead Flat	Zero VOC		CEIL10							
DECOGLO Cabinet, Door & Trim Paints	50 g/L					DGLO30		DGLO50		
ENDURALASTIC 5 Elastomeric Wall Coating	50 g/L		EDLV10							
ENDURALASTIC 10 Elastomeric Wall Coating	50 g/L		EDLX10							
VIN-L-STRIFE Zone Marking Paints	75-100 g/L		VSZM10		VSZM20					
SOLID-COLOR Deck, Fence & Siding Stain NEW	50 g/L			STSE10						
PORCH & FLOOR Concrete & Wood Coating COMING SOON	50 g/L					PCFL30				
LIGHT-DUTY INDUSTRIAL										
ENDURA-COAT+ DTM Acrylic Coatings	100 g/L					ENCT30		ENCT50	ENCT60	
ENDURACAT Pre-Catalyzed Water-Based Epoxy	50 g/L							ENPX50		

*For specific product VOC content, refer to the Product Data Sheet that can be found at dunnedwards.com
 *For Professional Use Only. Not for residential use in California.

PRIMER SELECTION GUIDE

PRODUCT NAME	VOC CONTENT*	SUBSTRATES	MATERIAL #
INTERIOR			
VINYLASTIC Premium	5 g/L	DRYWALL	VNPR00
VINYLASTIC Select	Zero VOC	DRYWALL	VNSL00
VINYLASTIC Plus	95 g/L	LEVEL 5 DRYWALL	VNPL00
PRO-COM HIGH BUILD PRIMER-SEALER 	50 g/L	DRYWALL	PCHB00
EXTERIOR			
EZ-PRIME Premium	50 g/L	REDWOOD / CEDAR	EZPR00
EZ-PRIME Select	50 g/L	REDWOOD / CEDAR	EZSL00
INTERIOR/EXTERIOR			
BLOC-RUST Premium	50 g/L	FERROUS METAL	BRPR00-2-WH BRPR00-2-RO
EFF-STOP Premium	50 g/L	MASONRY	ESPR00
EFF-STOP Select	50 g/L	MASONRY	ESSL00
FLEX-PRIME Select	50 g/L	MASONRY / CRACK-RESISTANT	FPSL00
Smooth BLOCFIL Premium	65 g/L	CONCRETE BLOCK	SBPR00
Smooth BLOCFIL Select	50 g/L	CONCRETE BLOCK	SBSL00
ULTRA-GRIP Premium	50 g/L	MULTI-SURFACE	UGPR00
ULTRA-GRIP Select	Zero VOC	MULTI-SURFACE	UGSL00
PRO-COM MULTI-PURPOSE PRIMER 	50 g/L	MULTI-SERVICE	PCMP00
PRO-COM 6500	50 g/L	MASONRY	PCMA00
CONTRACTOR'S EDGE	<100 g/L	MULTI-PURPOSE	CE-352957-2
SPECIALTY			
BLOCK-IT Stain-Blocking Primer	50 g/L	STAIN-BLOCKING	BIPR00
DECOPRIME Cabinet, Door & Trim Primer 	50 g/L	WOOD / HARDBOARD	DCPR00
PREP-WALL Drywall Conditioner	25 g/L	DRYWALL	PRWL00
SUPER-LOC Masonry/Bonding Primer	50 g/L	MASONRY / BONDING	SLPR00
SURFACO Chalk-Binding Primer	10 g/L	CHALK-BINDING	SFSL00
LIGHT-DUTY INDUSTRIAL			
ENDURAPRIME Ferrous Metal Primer	50 g/L	FERROUS METAL	ENPR00
ULTRASHIELD Galvanized Metal Primer	50 g/L	GALVANIZED METAL	ULGM00

*For specific product VOC content, refer to the Product Data Sheet that can be found at dunnedwards.com

PROTECT WHAT MATTERS

The success of your projects depends on the performance and durability of the products you use. Safeguard your work with coatings engineered to last. You'll be doing your part to protect the planet, too. Made in the world's first and only LEED® Gold-certified paint manufacturing facility, Dunn-Edwards products meet or exceed most environmental standards.



'LEED' and related logo is a trademark owned by the U.S. Green Building Council and is used with permission.



Products bearing this logo are EG-FREE™ and TAC/HAP-FREE. Ethylene glycol (EG), a solvent often used in water-based paints, is listed as a Toxic Air Contaminant (TAC) and Hazardous Air Pollutant (HAP). In 1983, Dunn-Edwards was the first in the industry to voluntarily replace EG with propylene glycol, a nontoxic alternative "generally regarded as safe" by the FDA. Also, every Dunn-Edwards product with the EG-FREE logo is formulated without any other TAC or HAP.

A GREEN LEGACY, A GREENER FUTURE.

Dunn-Edwards has a green legacy that makes us proud and inspires us to do more. We are firmly dedicated to the principle of eco-efficiency, which we define as the ability to satisfy human needs in ways that minimize adverse impacts on energy and material resources, environmental quality, and human health and safety.

HEALTH & SAFETY when using water-based paints:

CAUTION! INHALATION OF SPRAY MIST OR SANDING DUST MAY BE HARMFUL. Use only with adequate ventilation. Avoid breathing vapors, spray mist and sanding dust. Wear a NIOSH-approved N100 filter mask (particulate type) when spraying or sanding. Avoid contact with skin and eyes. Do not ingest. Close container after use.

FIRST AID: If swallowed, immediately give 1 or 2 glasses of water to drink—for emergency information, call 1-800-222-1222. If having difficulty breathing, move to fresh air. For eye contact, immediately flush with water for 15 minutes. For skin contact, wash thoroughly with soap and water.

KEEP OUT OF REACH OF CHILDREN. For more information, see the appropriate Product Data Sheet(s) and Safety Data Sheet(s) available at dunnedwards.com

CAUTION! Scraping or sanding surfaces of older buildings (especially pre-1978) may release dust containing lead or asbestos. EXPOSURE TO LEAD OR ASBESTOS CAN BE VERY HAZARDOUS TO YOUR HEALTH. Wear a NIOSH-approved N100 particulate filter mask to avoid breathing dust. Use a HEPA vacuum for cleanup, and finish by water-washing all surfaces. For more information, see Dunn-Edwards 'Surface Preparation Safety' guide or call U.S. EPA's lead hotline at 1-800-424-LEAD, or visit epa.gov/lead or epa.gov/asbestos—or contact your state or local Health Agency.

PHOTOGRAPHS: Paint colors depicted in the photographs in this guide appear differently than on actual surfaces. Photographic processes and lighting will alter appearance. BACK COVER PHOTO: Body: Almond Milk (DEHW01) • Accent: Egyptian Sand (DE6207). FRONT COVER PHOTO: Body: White Daisy (DEHW02)



(888) DE PAINT (337-2468) | dunnedwards.com

©2024 Dunn-Edwards Corporation. All rights reserved. ESL1014 - 12.5M 08/24

APPLY A HIGHER STANDARD™