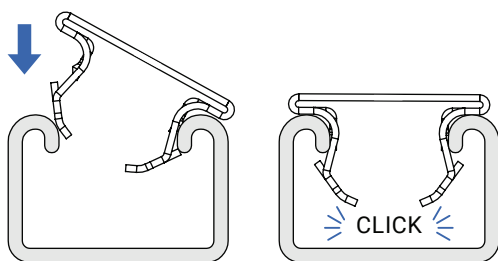
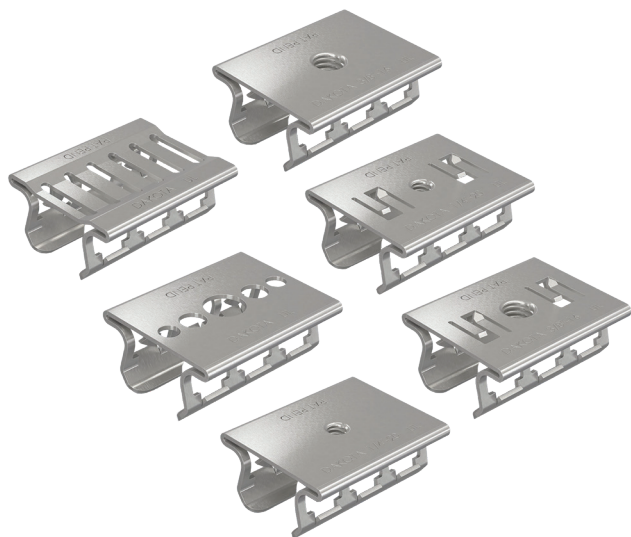


SMART-RECEIVERS™

Features & Benefits

- Great for prefabrication
- Efficient mounting
- Quick repositioning
- High strength yield
- Use with 13/16" & 1-5/8" strut
- No measuring required



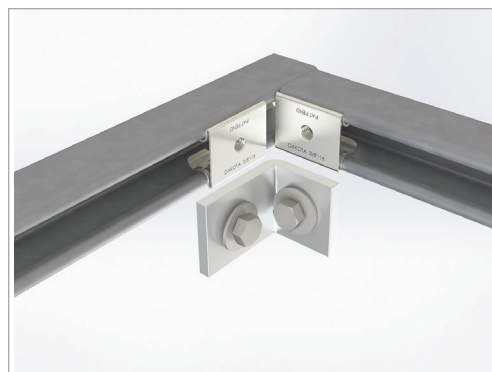
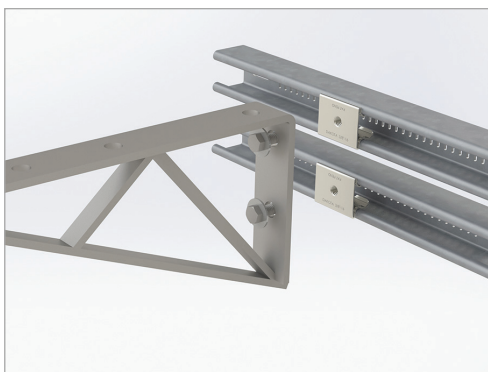
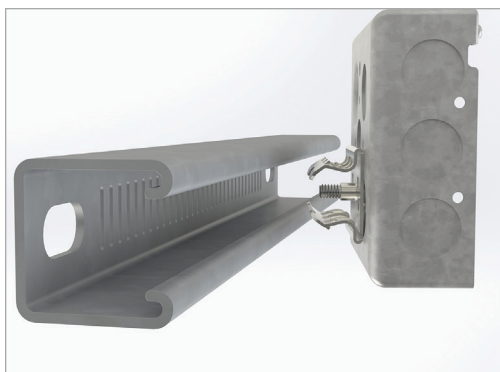
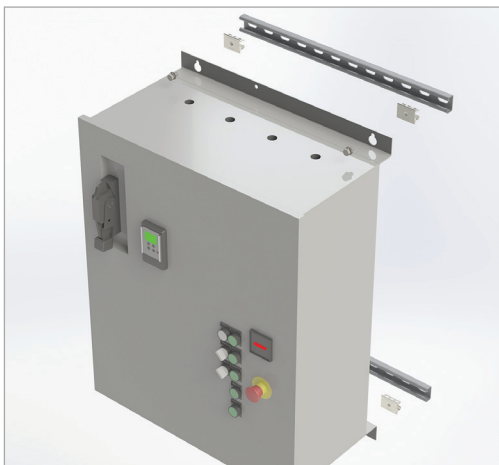
bimobject®

Product Details

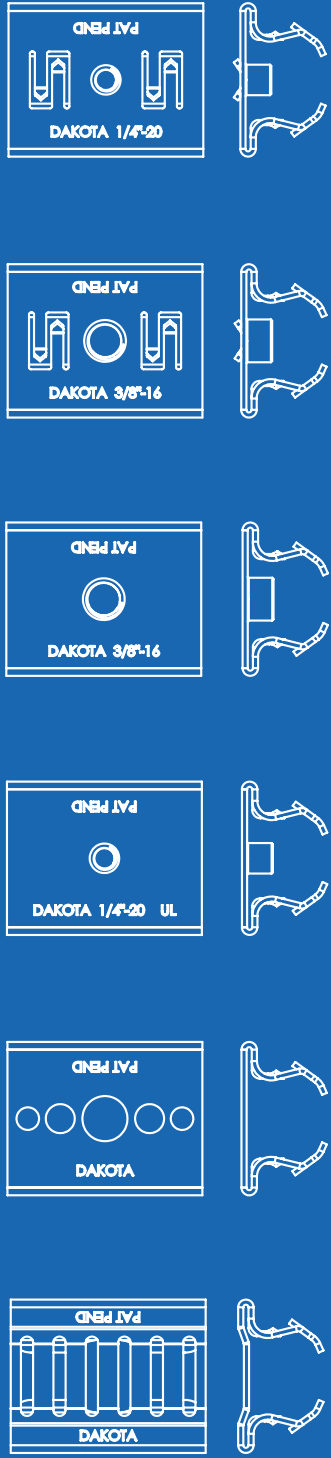
Material: 12 Gauge Structural Steel, Grade 50

Finish: Pre-galvanized Zinc

Applications: Electrical



SMART-RECEIVER™ SPECIFICATIONS

	PART#	DESCRIPTION	MAX LOAD	DETAILS	APPLICATIONS
	DS-TR14-BPT	1/4"-20 Dakota Threaded Receiver (w/ barbs)	200 lbs	Allows for 1/4" screw attachment to strut channel with stabilized rotation.	Perfect for mounting 1900 boxes, electrical panels, pull boxes, and disconnect boxes to strut channels.*
	DS-TR38-BPT	3/8"-16 Dakota Threaded Receiver (w/ barbs)	250 lbs	Allows for 3/8" screw attachment to strut channel with stabilized rotation.	
	DS-TR14-WPT	1/4"-20 Dakota Threaded Receiver (w/o barbs)	250 lbs	Allows for 1/4" screw attachment to strut channel.	Flat surface top for flush to surface mounting. Great for building strut frames, angle bracket mounts, strut joints, bridle rings, j-hooks and much more.*
	DS-TR38-WPT	3/8"-16 Dakota Threaded Receiver (w/o barbs)	300 lbs	Allows for 3/8" screw attachment to strut channel.	
	DS-MR-PT	Dakota Mounting Receiver	300 lbs	Non-threaded for universal mounting. Holes: 0.219"(5.5mm) x 0.281"(7.1mm) x 0.438"(11.1mm)	Quick installation of wall mounted strut channels.
	DS-SR-PT	Dakota Slotted Receiver	300 lbs	Use as one or grouped together with Dakota Smart-Clamps.	Alternative to a 3-piece strut strap. Essentially a 1-piece strut strap.

*Not to be used to support a trapeze system