

# EMT SMART-CLAMPS™



## Features & Benefits

- Quickly installed & removed
- High strength yield
- No power tools required
- Clean, organized appearance
- Single piece of hardware, ready-to-use



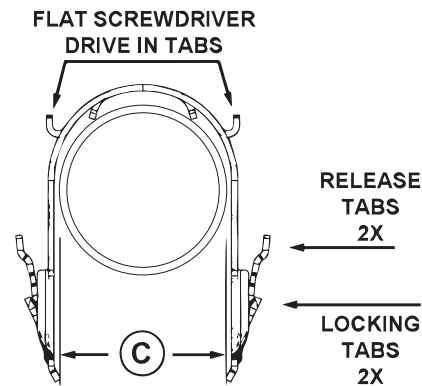
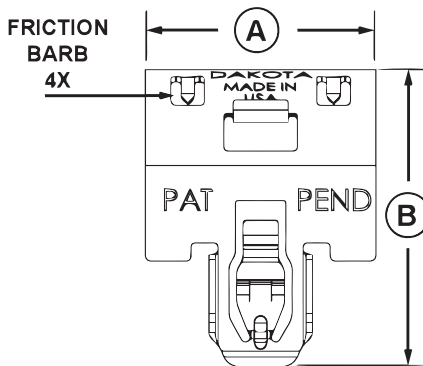
bimobject®

## Product Details

**Material:** SAE Austempered Spring Steel

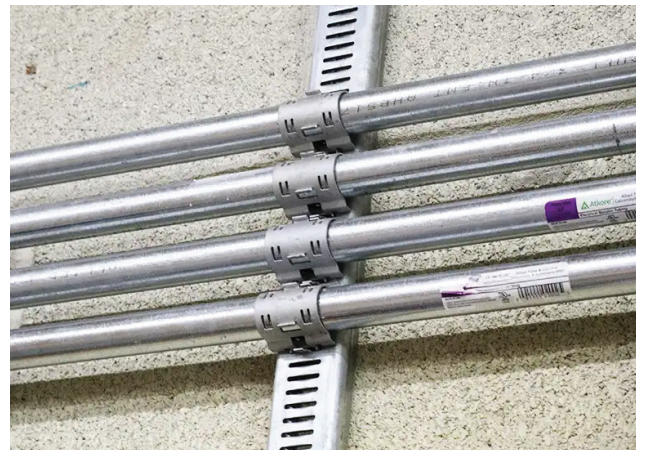
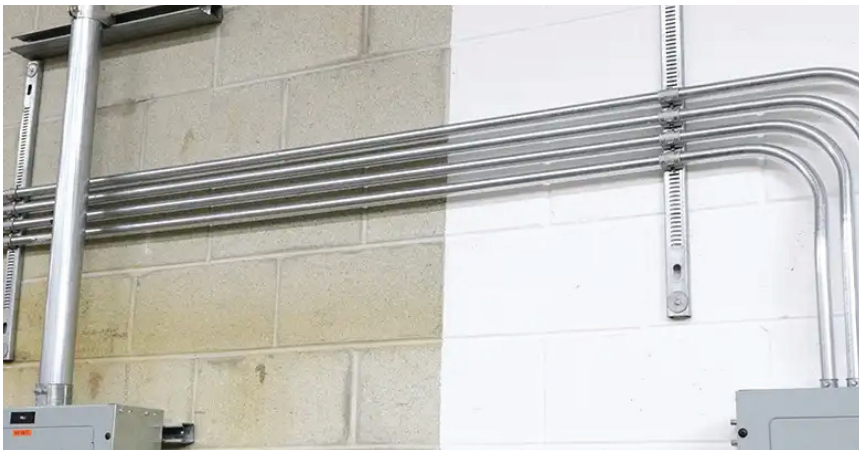
**Finish:** Dakota ProTect™ Wet/Dry: 1000hr SST

**Applications:** Electrical



## EMT SMART-CLAMPS™

| PART#           | DESCRIPTION            | A - WIDTH          | B - HEIGHT         | C - PIPE DIAMETER  | MAX LOAD RATING (3X SAFETY FACTOR) |
|-----------------|------------------------|--------------------|--------------------|--------------------|------------------------------------|
| DS-CC-12EMT-PT  | ½" EMT Conduit Clamp   | 1.496"<br>(38.0mm) | 1.433"<br>(36.4mm) | 0.706"<br>(17.9mm) | 400 lbs                            |
| DS-CC-34EMT-PT  | ¾" EMT Conduit Clamp   | 1.496"<br>(38.0mm) | 1.657"<br>(42.1mm) | 0.922"<br>(23.4mm) | 350 lbs                            |
| DS-CC-1EMT-PT   | 1" EMT Conduit Clamp   | 1.496"<br>(38.0mm) | 1.903"<br>(48.3mm) | 1.163"<br>(29.5mm) | 325 lbs                            |
| DS-CC-114EMT-PT | 1 ¼" EMT Conduit Clamp | 1.496"<br>(38.0mm) | 2.256"<br>(57.3mm) | 1.510"<br>(38.4mm) | 400 lbs                            |
| DS-CC-112EMT-PT | 1 ½" EMT Conduit Clamp | 1.496"<br>(38.0mm) | 2.486"<br>(63.1mm) | 1.740"<br>(44.2mm) | 400 lbs                            |
| DS-CC-2EMT-PT   | 2" EMT Conduit Clamp   | 1.496"<br>(38.0mm) | 2.935"<br>(74.5mm) | 2.197"<br>(55.8mm) | 400 lbs                            |

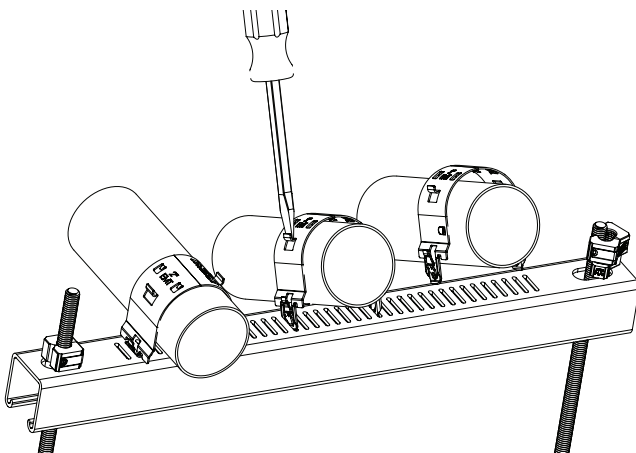


## SMART-CLAMP™ INSTALLATION TIPS

To install, insert the tabs of the Smart-Clamp™ into the vertical slots.

Push down until it clicks in place, use a flat head screwdriver to ensure engagement.

To remove, push the locking tabs inward to disengage and pry out.



**400lbs**  
SAFE WORKING LOAD

