



# GIAN® formliner





# Concrete textures made with GIAN formliners

1200 - 1250 mm

20 mtr

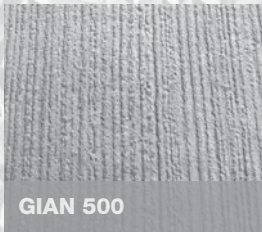
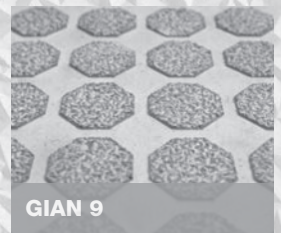
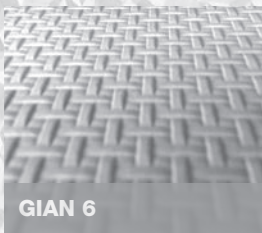
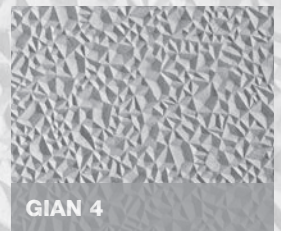
0



2050 - 2200 mm

50 mtr

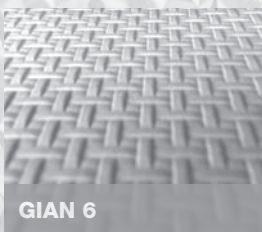
0



3050 - 3350 mm

50 mtr

0

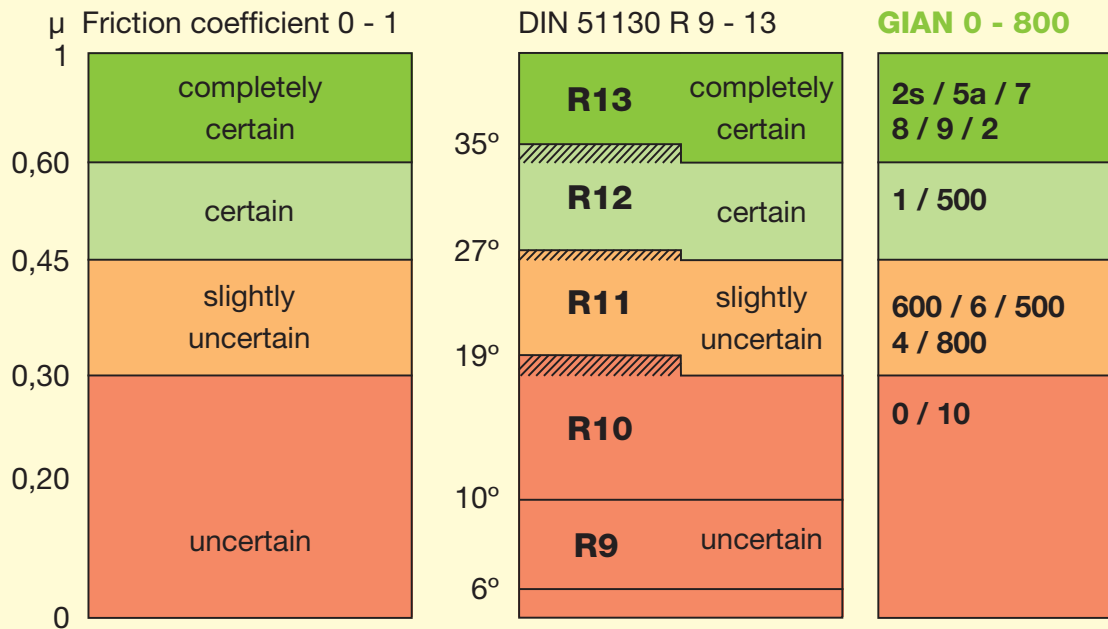




*Zusammenfassung der Prüfergebnisse Klassifizierung der Rutschhemmung nach DIN 51130:2014*

Bezeichnung	Klassifizierung der Rutschhemmung nach DIN51130:2014	korrigierter mittlerer Gesamtakzeptanzwinkel $\alpha_{ges}$ [-°]
GIAN 0	R10	16,5
GIAN 1	R12	34,1
GIAN 2	R13	>36,0
GIAN 2s	R13	>37,0
GIAN 4	R11	23,1
GIAN 5a	R13	>37,0
GIAN 6	R11	26,7
GIAN 7	R13	>37,0
GIAN 8	R13	36,9
GIAN 9	R13	>36,0
GIAN 10	R10	13,0
GIAN 500	R12   R11	32,5 h   25,2 v
GIAN 600	R11	26,9
GIAN 800	R11	20,2

**Table of comparison bfu / EMPA / Uni Wuppertal**



FSC 2000 print machine measurements



Shoe Shod Ramp Test with subjects

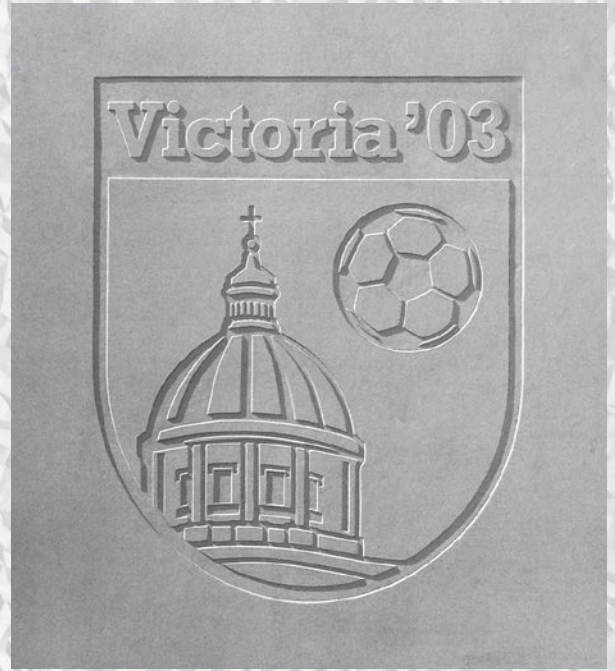




**GIAN® Concrete Art** Computer-controlled cutting in GIAN®



GIAN 800 | GIAN 2 | GIAN 4 | GIAN 10



GIAN 100 (3 mm)



GIAN®  
Made in Holland

