


# ULTRA POWER®

FACADE & PHOTOVOLTAIC

MADE IN FRANCE

POSITIVE VIBES

ULTRAÇADE®  
INDUSTRIES

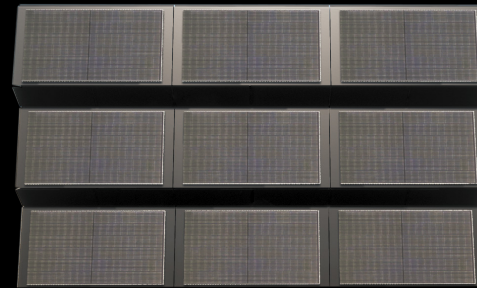


**YOUR  
FAÇADE  
IS AN  
ENERGY  
HUB!**

## KIT **POWER**

### Ready to pose

2 kits available with all the necessary building elements to implement your project with ease.



KIT  
**3.6** kWc

PAGE 4



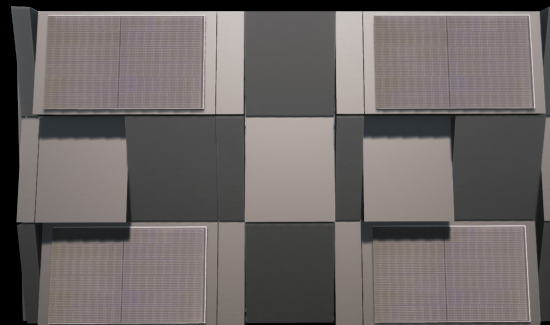
KIT  
**6.0** kWc

PAGE 5

## CONCEPT **POWER**

### The Game Box

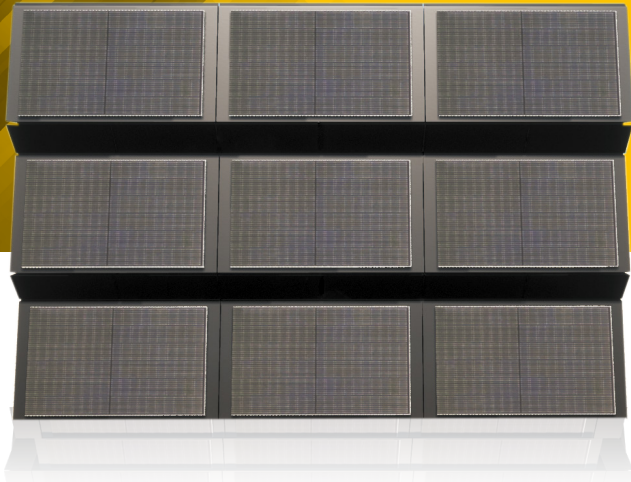
Access all the elements of the concept to imagine your project of photovoltaic facade.



100%  
**Customizable**

PAGE 6


# KIT POWER<sup>®</sup> 3.6 kWc



MADE IN FRANCE

WARRANTY  
POWER  
25 YEARS

## Features

Total power	3.6 kWc
Number of panel	9
Length	6.10 m
Height	4.23 m
Total surface	25.80 m <sup>2</sup>
Weight m <sup>2</sup>	22 kg/m <sup>2</sup>
Material 	Composite panel in STACBOND <sup>®</sup>
Color	STB-408 Carbon

## Composition of the kit

Description	Qt
PV2000 module	9
Horizon 300 cladding	12
Aluminum Omega	14
Sliders	50
Double T	25
Side finish	4
Stainless steel fixing kit	Included

SELF-SUFFICIENCY RATE

15%\*

SELF-CONSUMPTION RATE

94%\*



\* Simulation assumptions:

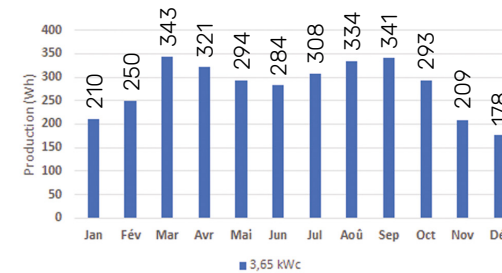
- Tertiary office space located in Clermont-Ferrand, France
- Annual consumption : 20 901 kWh
- South-facing facade without shading near by
- Tilt of 83°
- Annual sunshine 920 hours

## Simulation\*

Example for an annual **consumption of 20 901 kWh/year**

Production of the kit	3 365 kWh/year
Self-consumption rate	94%
That is a saving of 3 163 kWh à 0.30€	948.90 €/year
Self-sufficiency rate	15%
A sale of the surplus of 202 kWh à 0.10€	20.20 €/year
<b>Total annual saving</b>	<b>969 €/year</b>

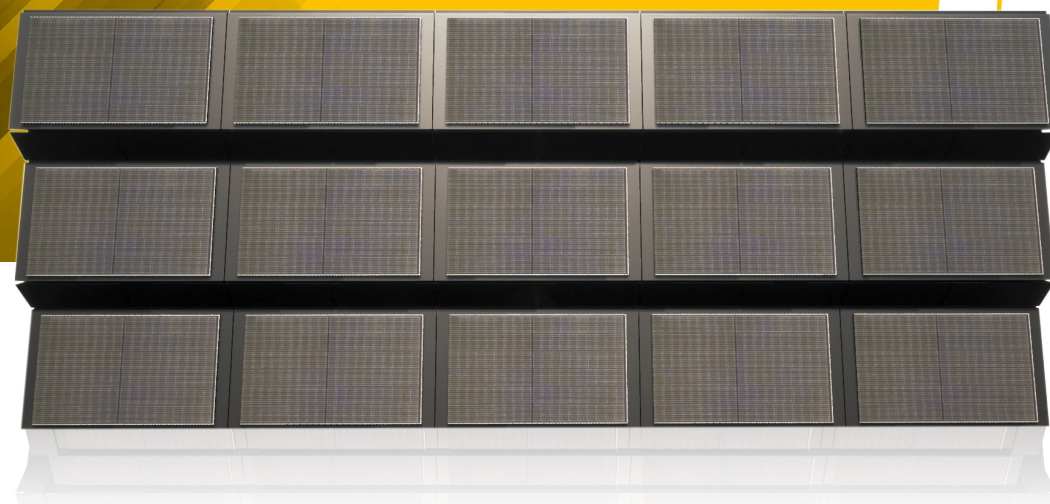
## Annual production of the 3.6 kWc kit




TOTAL

**3 365 kWh/year**

# KIT POWER<sup>®</sup> 6.0 kWc



## Features

Total power	6.0 kWc
Number of panel	15
Length	10.10 m
Height	4.23 m
Total surface	42.70 m <sup>2</sup>
Weight m <sup>2</sup>	22 kg/m <sup>2</sup>
Material 	Composite panel in STACBOND <sup>®</sup>
Color	STB-408 Carbon

## Composition du kit

Description	Qt
PV2000 module	15
Horizon 300 cladding	20
Aluminum Omega	22
Sliders	100
Double T	50
Side finish	4
Stainless steel fixing kit	Included

SELF-SUFFICIENCY RATE

**22%\***

SELF-CONSUMPTION RATE

**82%\***



\* Simulation assumptions:

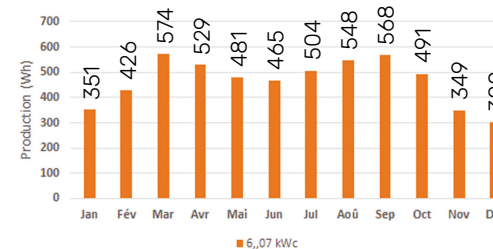
- Tertiary office space located in Clermont-Ferrand, France
- Annual consumption : 20 901 kWh
- South-facing facade without shading near by
- Tilt of 83°
- Annual sunshine 920 hours

## Simulation\*

Example for an annual **consumption of 20 901 kWh/year**

Production of the kit	5 586 kWh/year
Self-consumption rate	82%
That is a saving of 3 163 kWh à 0.30€	1 374 €/year
Self-sufficiency rate	22%
A sale of the surplus of 202 kWh à 0.10€	100.60 €/year
<b>Total annual saving</b>	<b>1 474.60 €/year</b>

## Annual production of the 6.0kWc kit

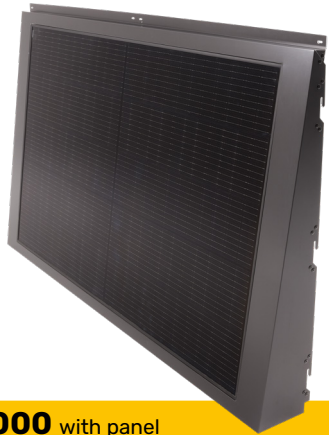


**TOTAL**

**5 586 kWh/year**

# The Game Box

System  
components



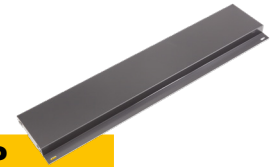
**PV2000** with panel



**V1000B**



**V1000H**



**H200P**



**H300H**



**V300B**



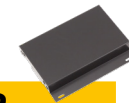
**V300H**



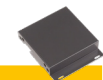
**V200B**



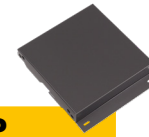
**V200H**



**FH32P**



**FH22P**



**FH33P**



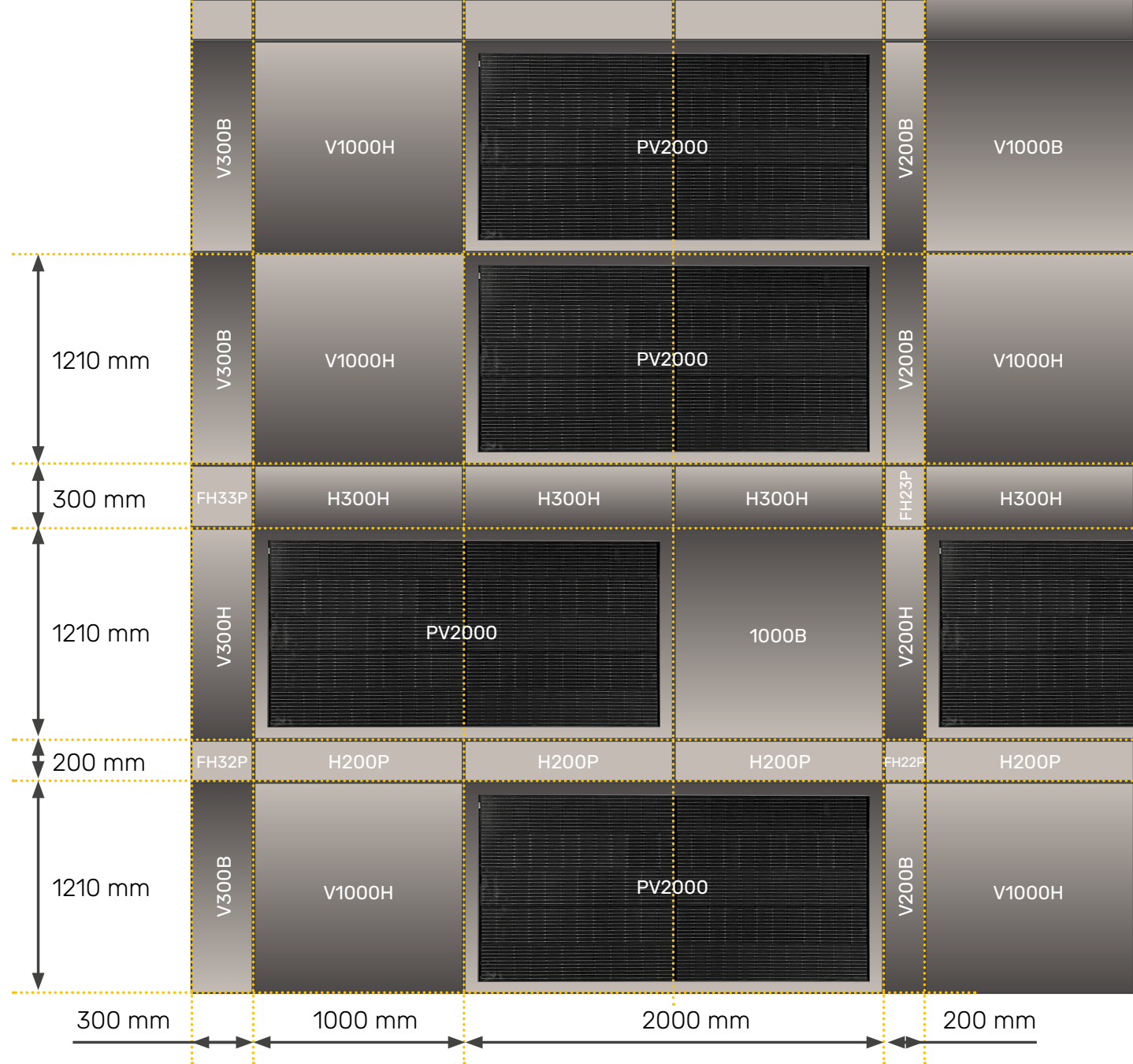
**FH23P**



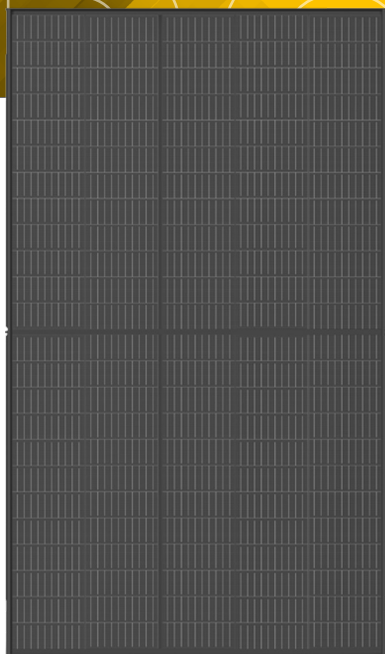
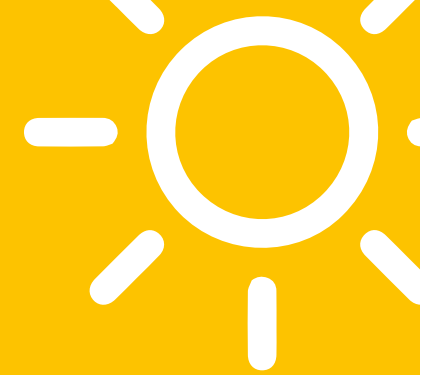
**One limit :  
your imagination !**

**The different design  
centre distances**

Thanks to the different design centre distances, you can combine endlessly the different elements that make up the POWER system to create a custom-made facade that is aesthetically pleasing, unique and photovoltaic.



# POWER<sup>®</sup> Photovoltaic module



**Vertex S**  
MODULE MONOCRYSTALLIN VERRE BACKSHEET

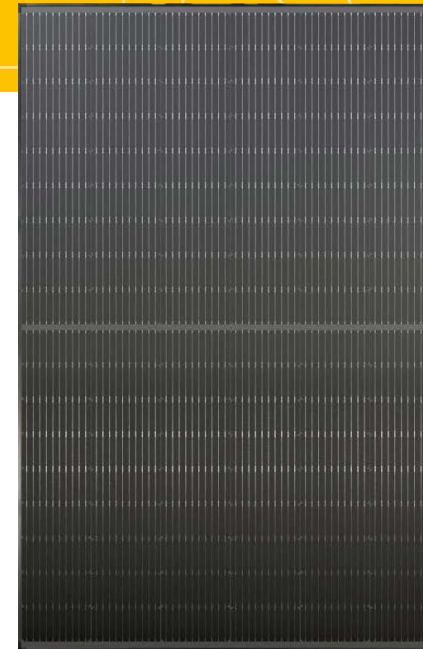
Power  
**405 W**

### Characteristics

SKU	TSM-DE09.08 *
Power	405 W
Max. efficiency	21,3%
Solar cells	Monocrystalline
Length	1 754mm
Width	1 096 mm
Frame thickness	30 mm
Weight	21,0 kg
Connector	TS4 / MC4 EV02

**TrinaSolar**

**GARANTIE**  
PUISSANCE  
**25 ANS**



Ninside Serie

Power  
**420 W**

### Characteristics

SKU	DMMXSCNi420 *
Power	420 W
Max. efficiency	21,5%
Solar cells	Monocrystalline
Length	1 722mm
Width	1 133 mm
Frame thickness	30 mm
Weight	21,5 kg
Connector	MC4 Evo2 ou Compatibles

**SOLUXTEC**  
Wir kennen Sonne

**FABRICATION**  
ALLEMANDE  
 

**GARANTIE**  
PUISSANCE  
**25 ANS**

\* Integration of other modules



CONCEPT  
POWER®

# Constructive Solution

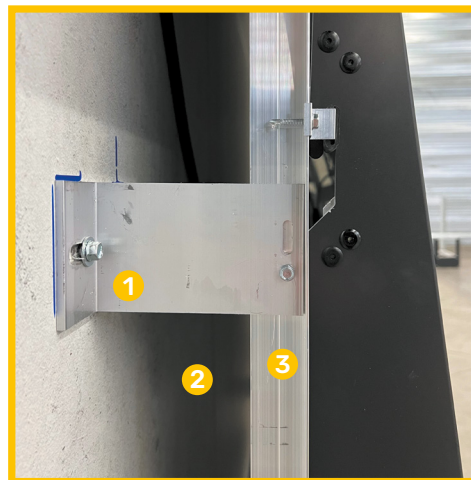


**Improvement of the building's  
energy coefficients  
by about 30%**

It is the ventilated facade system with the air gap and the chimney effect that gives the building this advantage.

## Ventilated facade

An air gap ensures natural ventilation of the façade and improves the comfort of the building. This is achieved by creating a gap between the insulation and the back of the facade cladding.



- 1 160mm bracket freely expandable at the ends
- 2 Ventilation space and technical void
- 3 Omega aluminium 20/10° Ig3000

## MOUNTING BRACKETS



Concrete



Timber frame



Masonry



Metal frame  
Double skin cladding



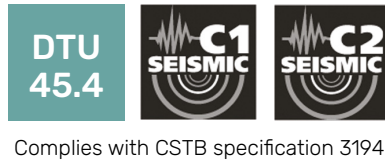
- 4 Cassette fixing point
- 5 Sliders
- 6 80mm bracket fixed in the centre of the omega

CONCEPT  
**POWER**<sup>®</sup>

# Certification

Partners

**STACBOND**  
certified partner



**ETANCO**  
Aluminium substructure  
A2 stainless steel  
fasteners

**QB** TF-24  
Processing under  
certification

**Efectis**  
Fire resistance  
LEPIR II



**CSTB**  
le futur en construction  
Wind tests EUROCODE  
EUROCODE - NV65 - 3517

CFD Testing | Digital Wind Tunnel Testing

# "FACADES ARE THE NEW FIELD OF ENERGY"

## Today's challenges

- ✚ ENERGY TRANSITION
- ✚ ENERGY AUTONOMY
- ✚ ENERGY SAVINGS
- ✚ CLIMATE EMERGENCY



For a long time, facades only had a passive role of protection and insulation.

Today, the urgency of the transition brings to light this untapped and totally unexplored source on a global scale. Façades are the new energy field.

### Your façade is a **real energy hub**

We have created a totally innovative active solar solution for your facades, which for the first time combines energy performance and aesthetics. A new opportunity for architectural design in an industrial standard plug & play, easy to install, as simple as a building set

MUCH MORE THAN A FACADE, WE HAVE CREATED ...

ULTRAÇADE<sup>®</sup>  
INDUSTRIES



# ULTRAÇADE<sup>®</sup>

INDUSTRIES

22 rue Verte - ZI Ladoux  
63118 Cébazat - France

**[CONTACT]**

power@ultracade.fr  
+33 (0)4 15 54 03 63

[www.ultracade.fr](http://www.ultracade.fr)

03/2023

