

**BL'NDSPACE<sup>®</sup>**  
PRODUCT BOOK **2026**

3

### **TRACKTRIM**

Superior recessed curtain track system.

16

### **Standard S SERIES**

The standard for hiding roller blinds.

20

### **Custom C SERIES**

Custom sizes for all blind types.

27

### **Pelmet P SERIES**

Custom pelmets for retro-fit solutions.

29

### **Modular M SERIES**

Superior blinds concealment.

33

### **BOX ACCESSORIES**

To align and connect boxes and covers.

36

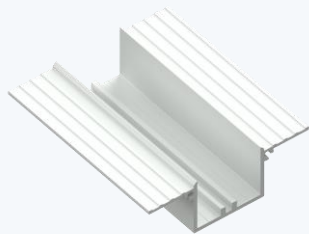
### **BESPOKE SERVICES**

Custom cutting and other bespoke requirements

# TRACKTRIM

Superior recessed curtain track system.

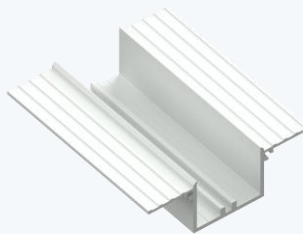
## TRACKTRIM - Tracks & Flat Ends



### TT1F-2m

ARTICLE: 71002-2

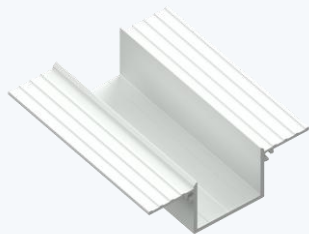
PRODUCT INFO:  
Trackrim Track with Screw  
Channel 2m



### TT1F-6m

ARTICLE: 71004-6

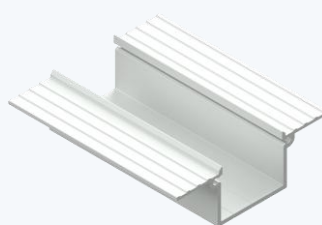
PRODUCT INFO:  
Trackrim Track with Screw  
Channel 6m



### TT2F-2m

ARTICLE: 71003-2

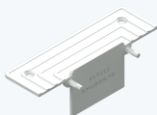
PRODUCT INFO:  
Trackrim Track without  
Screw Channel 2m



### TTCL1F-6m

ARTICLE: 71005

PRODUCT INFO:  
TrackTrim CLICK 6m



### TTFE1S

ARTICLE: 70074

PRODUCT INFO:  
TT Flat End with Flange for  
Manual Tracks



### TTFE1N

ARTICLE: 70073

PRODUCT INFO:  
TT Flat End without Flange  
for Manual Tracks



### SPLI1

ARTICLE: 53100

PRODUCT INFO:  
Splice Pin to Connect and  
Align Tracks



**CTP**

ARTICLE: 60070

PRODUCT INFO:  
Curtain Track Protector



**AKFB**

ARTICLE: 60073

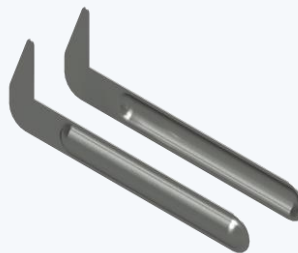
PRODUCT INFO:  
Allen Key for Grub Screw in  
Fixing Brackets



**CTIK2**

ARTICLE: 70090

PRODUCT INFO:  
Curtain Track Installation Kit  
(CTP, AKFB)



**TTCRT**

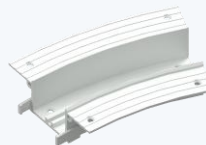
ARTICLE: 71030

PRODUCT INFO:  
TrackTrim CLICK Removal  
Tool



**TTCR250**  
ARTICLE: 70059

PRODUCT INFO:  
Curved Section 22.5  
Degrees with 250mm  
Radius



**TTCR290**  
ARTICLE: 70060

PRODUCT INFO:  
Curved Section 22.5  
Degrees with 290mm Radius



**TTCR300**  
ARTICLE: 70061

PRODUCT INFO:  
Curved Section 22.5  
Degrees with 300mm  
Radius



**TTCR330**  
ARTICLE: 70062

PRODUCT INFO:  
Curved Section 22.5  
Degrees with 330mm Radius



**TTCR365**  
ARTICLE: 70065

PRODUCT INFO:  
Curved Section 22.5  
Degrees with 365mm Radius



**TTCR440**  
ARTICLE: 70066

PRODUCT INFO:  
Curved Section 22.5  
Degrees with 440mm  
Radius



**TTCR480**  
ARTICLE: 70067

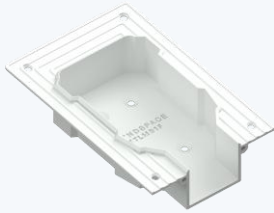
PRODUCT INFO:  
Curved Section 22.5  
Degrees with 480mm  
Radius



**TTCR508**  
ARTICLE: 70063

PRODUCT INFO:  
Curved Section 22.5  
Degrees with 508mm  
Radius

# TRACKTRIM – for Lutron System



## TTLMB1F

ARTICLE: 70021

PRODUCT INFO:  
Motor Box w Flanges for  
Lutron System



## TTLRB1F

ARTICLE: 70022

PRODUCT INFO:  
Return Box w Flanges for  
Lutron System



## TTLSRB1F

ARTICLE: 70048

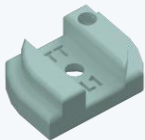
PRODUCT INFO:  
Straight return end  
connector Lutron



## TTLCRB1F

ARTICLE: 70043

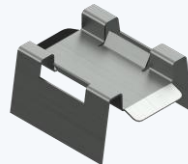
PRODUCT INFO:  
One-Piece Corner section  
for Butt-Jointed Lutron  
Return Ends



## TTL1

ARTICLE: 71012

PRODUCT INFO:  
Fixing Bracket for Lutron  
Curtain Track

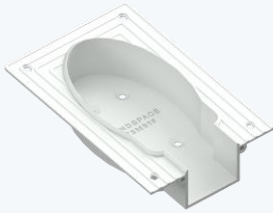


## TTCL1

ARTICLE: 71021

PRODUCT INFO:  
TrackTrim CLICK Fixing  
Bracket for Lutron

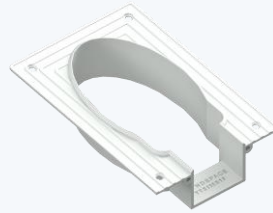
## TRACKTRIM – for Somfy System



### TTSMB1F

ARTICLE: 70023

PRODUCT INFO:  
Motor Box w Flanges for  
Somfy System



### TTSIMB1F

ARTICLE: 70032

PRODUCT INFO:  
Motor Box w Flanges for  
inverted install for Somfy



### TTSRB1F

ARTICLE: 70024

PRODUCT INFO:  
Return Box w Flanges for  
Somfy System



### TTSSRB1F

ARTICLE: 70047

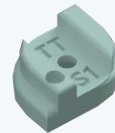
PRODUCT INFO:  
Straight return end  
connector Somfy



### TTSCR1F

ARTICLE: 70044

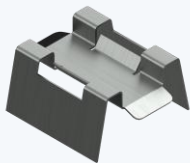
PRODUCT INFO:  
One-Piece Corner section  
for Butt-Jointed Somfy  
Return Ends



### TTS1

ARTICLE: 71016

PRODUCT INFO:  
Fixing Bracket for Somfy  
Glydea Curtain Track



### TTCS1

ARTICLE: 71022

PRODUCT INFO:  
TrackTrim CLICK Fixing  
Bracket for Somfy

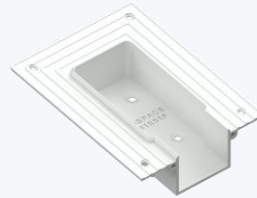
## TRACKTRIM – for Silent Gliss 5100 System



### TTSG51MB1F

ARTICLE: 70029

PRODUCT INFO:  
Motor Box w Flanges for  
Silent Gliss 5100 System



### TTSG51RB1F

ARTICLE: 70030

PRODUCT INFO:  
Return Box w Flanges for  
Silent Gliss 5100 System



### TTSG51SRB1F

ARTICLE: 70049

PRODUCT INFO:  
Straight return end  
connector Silent Gliss 5100



### TTSG51CRB1F

ARTICLE: 70045

PRODUCT INFO:  
One-Piece Corner section  
for Butt-Jointed Silent Gliss  
5100 Return Ends



### TTSG1

ARTICLE: 71014

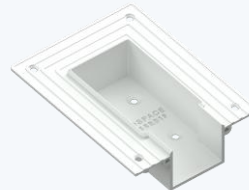
PRODUCT INFO:  
Fixing Bracket for Silent Gliss  
5100 Curtain Track

## TRACKTRIM – for Silent Gliss 5600 System



**TTSG56MB1F**  
ARTICLE: 70025

PRODUCT INFO:  
Motor Box w Flanges for  
Silent Gliss 5600 System



**TTSG56RB1F**  
ARTICLE: 70026

PRODUCT INFO:  
Return Box w Flanges for  
Silent Gliss 5600 System



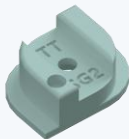
**TTSG56SRB1F**  
ARTICLE: 70050

PRODUCT INFO:  
Straight return end  
connector Silent Gliss 5600



**TTSG56CRB1F**  
ARTICLE: 70046

PRODUCT INFO:  
One-Piece Corner section  
for Butt-Jointed Silent Gliss  
5600 Return Ends



**TTSG2**  
ARTICLE: 71015

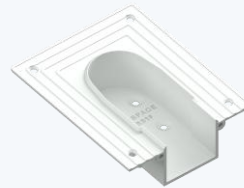
PRODUCT INFO:  
Fixing Bracket for Silent Gliss  
5600 Curtain Track

## TRACKTRIM – for Qmotion & Crestron Systems



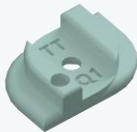
**TTQMB1F**  
ARTICLE: 70027

PRODUCT INFO:  
Motor Box w Flanges for  
Qmotion System



**TTQRB1F**  
ARTICLE: 70028

PRODUCT INFO:  
Return Box w Flanges for  
Qmotion System



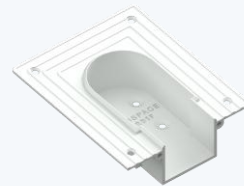
**TTQ1**  
ARTICLE: 71013

PRODUCT INFO:  
Fixing Bracket for Qmotion  
Curtain Track



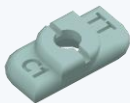
**TTCMB1F**  
ARTICLE: 70033

PRODUCT INFO:  
Motor Box w Flanges for  
Crestron System



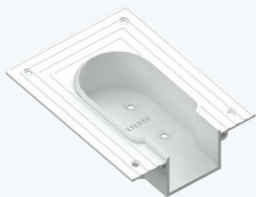
**TTCRB1F**  
ARTICLE: 70034

PRODUCT INFO:  
Return Box w Flanges for  
Crestron System



**TTC1**  
ARTICLE: 71011

PRODUCT INFO:  
Fixing Bracket for Crestron  
Curtain Track



**TTGMBIF**

ARTICLE: 70035

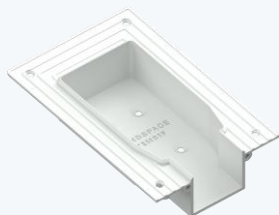
PRODUCT INFO:  
Motor Box w Flanges for  
Goelst System



**TTG1**

ARTICLE: 71017

PRODUCT INFO:  
Fixing Bracket for Goelst  
Track



**TTEMBIF**

ARTICLE: 70037

PRODUCT INFO:  
Motor Box w Flanges for Erfal  
System



**TTERBIF**

ARTICLE: 70038

PRODUCT INFO:  
Return Box w Flanges for  
Erfal System



**TTE1**

ARTICLE: 71018

PRODUCT INFO:  
Fixing Bracket for Erfal  
Curtain Track

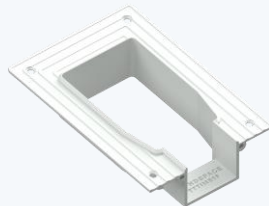
## TRACKTRIM – for Trietex System



### TTTMB1F

ARTICLE: 70039

PRODUCT INFO:  
Motor Box w Flanges for  
Trietex 1 System



### TTTIMB1F

ARTICLE: 70042

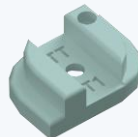
PRODUCT INFO:  
Inverted Motor Box w  
Flanges for Trietex 1 System



### TTTTB1F

ARTICLE: 70040

PRODUCT INFO:  
Return Box w Flanges for  
Trietex 1 System



### TTTI

ARTICLE: 71020

PRODUCT INFO:  
Fixing Bracket for Trietex 1  
Curtain Track

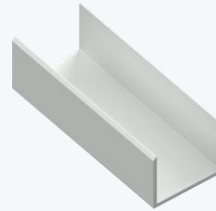
## TRACKTRIM – Tracks, Flat Ends & Flangeless End Sets



### TT1F-6m

ARTICLE: 60002-6

PRODUCT INFO:  
Reese track without skim  
flanges 6m



### TT1F-2m

ARTICLE: 60002-2

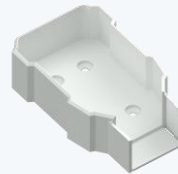
PRODUCT INFO:  
Tracktrim Flangeless (Reese)  
2m



### FE35

ARTICLE: 60071

PRODUCT INFO:  
Manual ends without skim  
flanges



### LMB1E

ARTICLE: 60021

PRODUCT INFO:  
Motor Box without Flanges  
for Lutron System



### LRB1E

ARTICLE: 60022

PRODUCT INFO:  
Return Box without Flanges  
for Lutron System



### SMB1E

ARTICLE: 60023

PRODUCT INFO:  
Motor Box without Flanges  
for Somfy System



### SRB1E

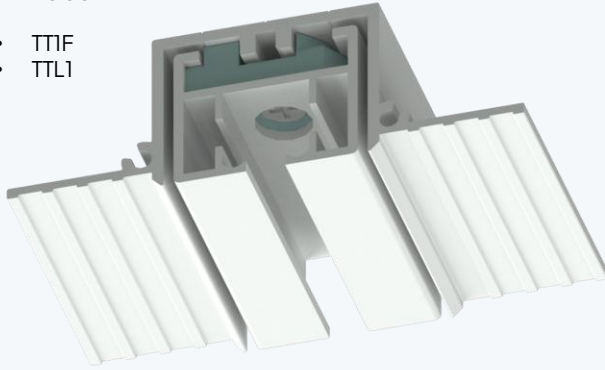
ARTICLE: 60024

PRODUCT INFO:  
Return Box without Flanges  
for Somfy System

# Sample Configuration

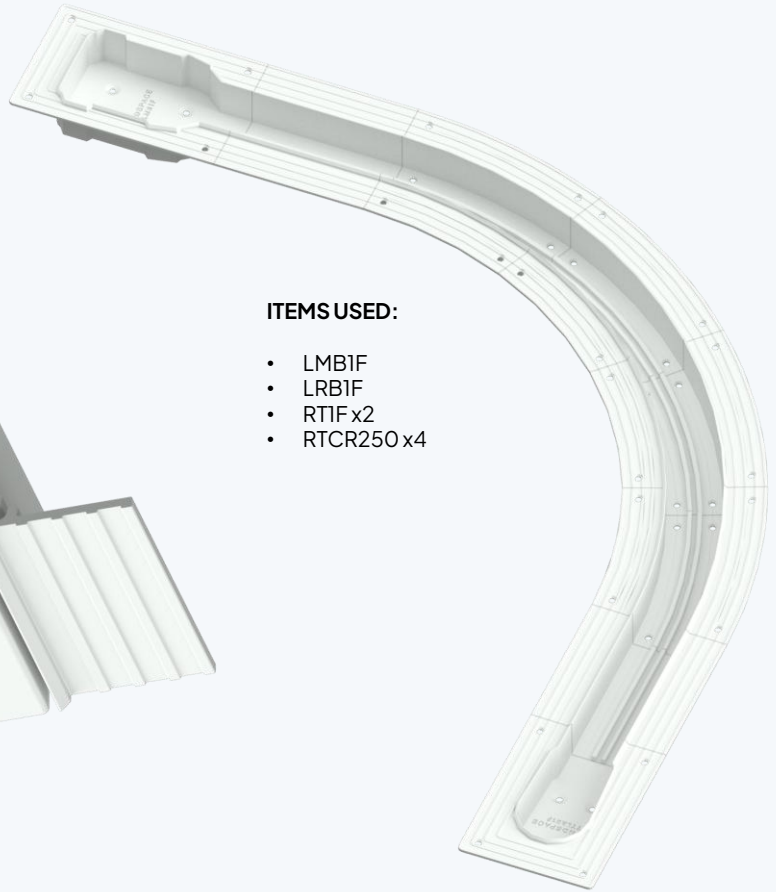
**ITEMS USED:**

- TTIF
- TTL1



**ITEMS USED:**

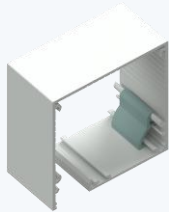
- LMB1F
- LRB1F
- RTIF x2
- RTCR250 x4



# Standard **S** **SERIES**

The standard for hiding rollerblinds.

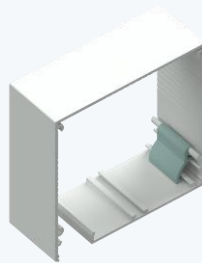
## S SERIES – Head and Side Boxes



### S100x100NN

ARTICLE: 56000

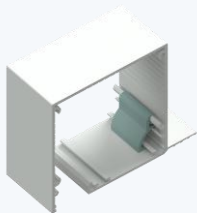
PRODUCT INFO:  
Head Box, no flanges,  
Cover+Hinges 6m



### S130x130NN

ARTICLE: 56020

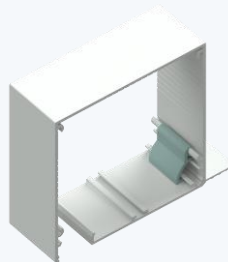
PRODUCT INFO:  
Head Box, no flanges,  
Cover+Hinges 6m



### S100x100NS

ARTICLE: 56001

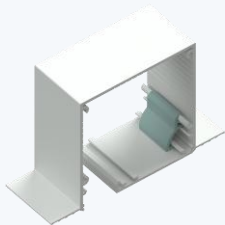
PRODUCT INFO:  
Head Box, one flange,  
Cover+Hinges 6m



### S130x130NS

ARTICLE: 56021

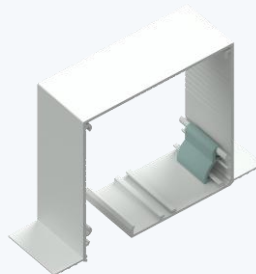
PRODUCT INFO:  
Head Box, one flange,  
Cover+Hinges 6m



### S100x100SS

ARTICLE: 56002

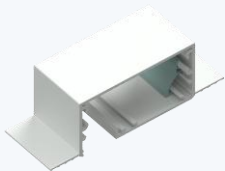
PRODUCT INFO:  
Head Box, two flanges,  
Cover+Hinges 6m



### S130x130SS

ARTICLE: 56022

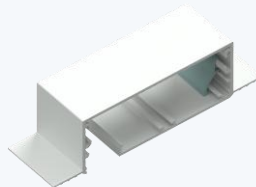
PRODUCT INFO:  
Head Box, two flanges,  
Cover+Hinges 6m



### S100x50SS

ARTICLE: 56030

PRODUCT INFO:  
Side Box for side channels,  
two skim coat flanges



### S130x50SS

ARTICLE: 56035

PRODUCT INFO:  
Side Box for side channels,  
two skim coat flanges 6m

## S SERIES – Cover Plates & Hinges



### C65

ARTICLE: 86014

PRODUCT INFO:  
Cover 65mm 6m



### C75

ARTICLE: 86015

PRODUCT INFO:  
Cover 75mm 6m



### C85

ARTICLE: 86016

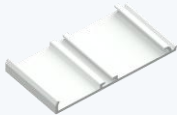
PRODUCT INFO:  
Cover 85mm 6m



### C92

ARTICLE: 86010

PRODUCT INFO:  
Cover 92mm 6m



### C95

ARTICLE: 86017

PRODUCT INFO:  
Cover 95mm 6m



### C122

ARTICLE: 86018

PRODUCT INFO:  
Cover 115mm 6m



### CH25

ARTICLE: 86030

PRODUCT INFO:  
Cover Hinge sold in packs of  
25 pcs



### CH25H

ARTICLE: 86031

PRODUCT INFO:  
Cover Hinge Extra Strong  
sold in packs of 25 pcs

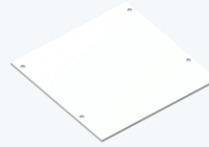
## S SERIES – End Caps, Chain Guides & Wall Mount



### SEC100x50

ARTICLE: 56102

PRODUCT INFO:  
End Cap for S100x50



### SEC100x100

ARTICLE: 56101

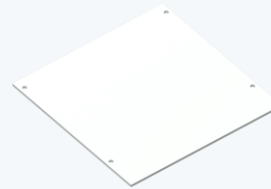
PRODUCT INFO:  
End Cap for S100x100



### SEC130x50

ARTICLE: 56111

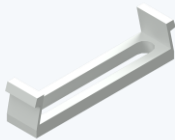
PRODUCT INFO:  
End Cap for S130x50



### SEC130x130

ARTICLE: 56110

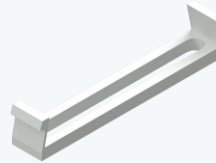
PRODUCT INFO:  
End Cap for S130x130



### CG100

ARTICLE: 86040

PRODUCT INFO:  
Chain Guide 100



### CG130

ARTICLE: 86041

PRODUCT INFO:  
Chain Guide 130



### Wall Mount

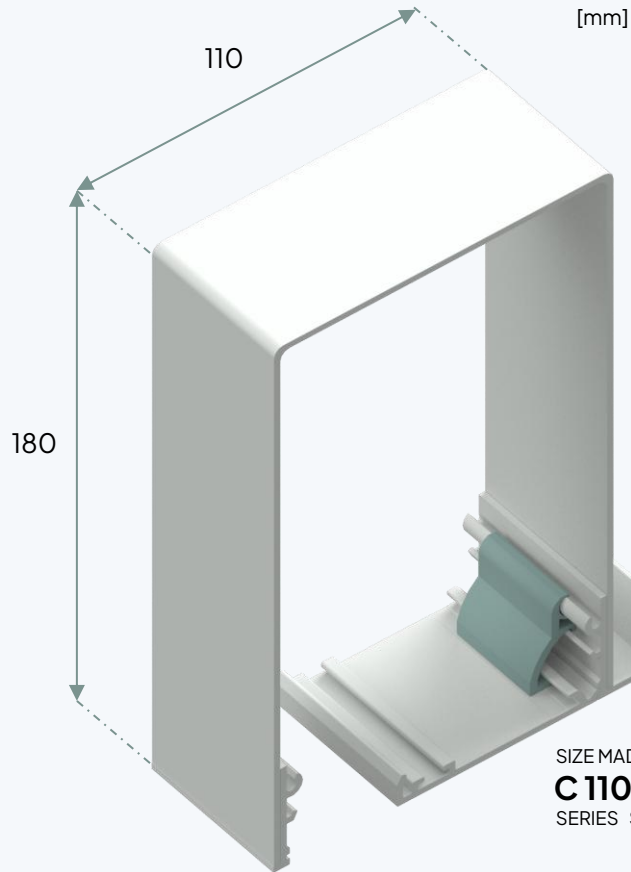
ARTICLE: 86020

PRODUCT INFO:  
Wall mount for installation  
without Head Box

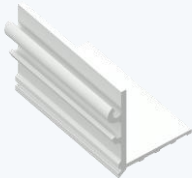
# Custom **C** SERIES

Custom sizes for all blind types.

## C SERIES – Example Boxes

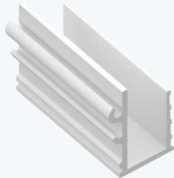


### Box Corners



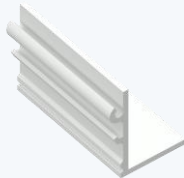
**S**

Skim coat flange



**U**

Upstand flange



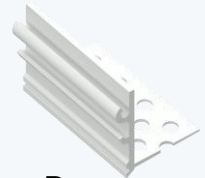
**V**

Visible plain flange



**N**

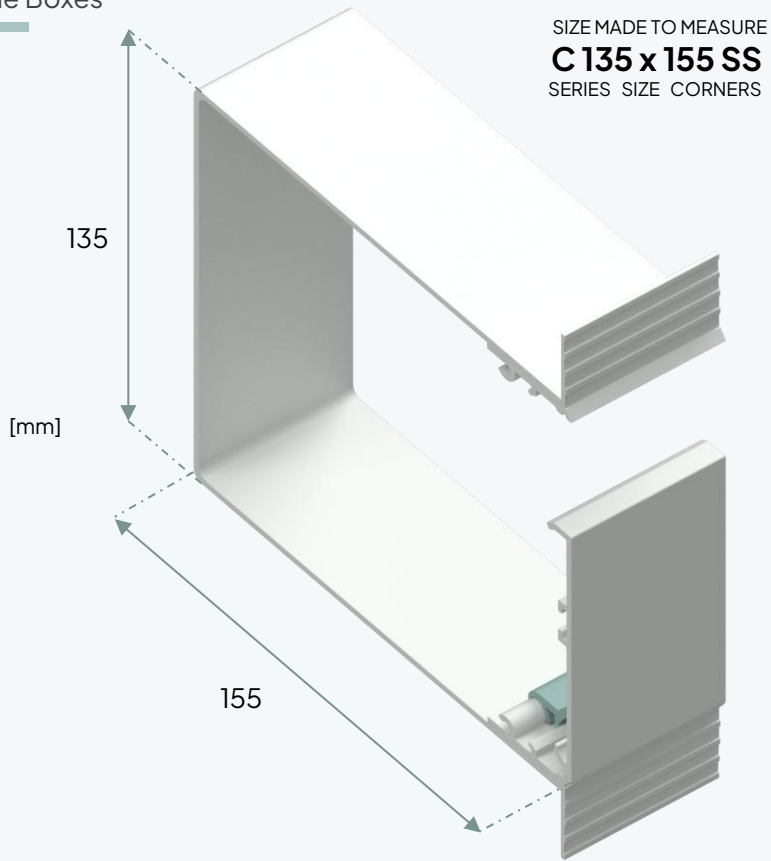
No flange



**P**

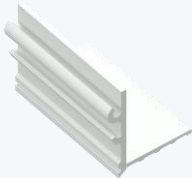
Perforated flange

## C SERIES – Example Boxes



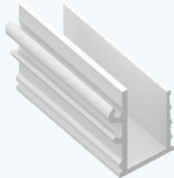
SIZE MADE TO MEASURE  
**C 135 x 155 SS**  
SERIES SIZE CORNERS

## Box Corners



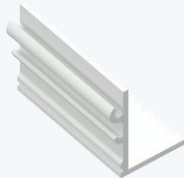
**S**

Skim coat flange



**U**

Upstand flange



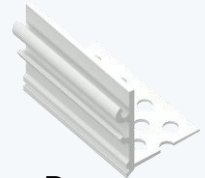
**V**

Visible plain flange



**N**

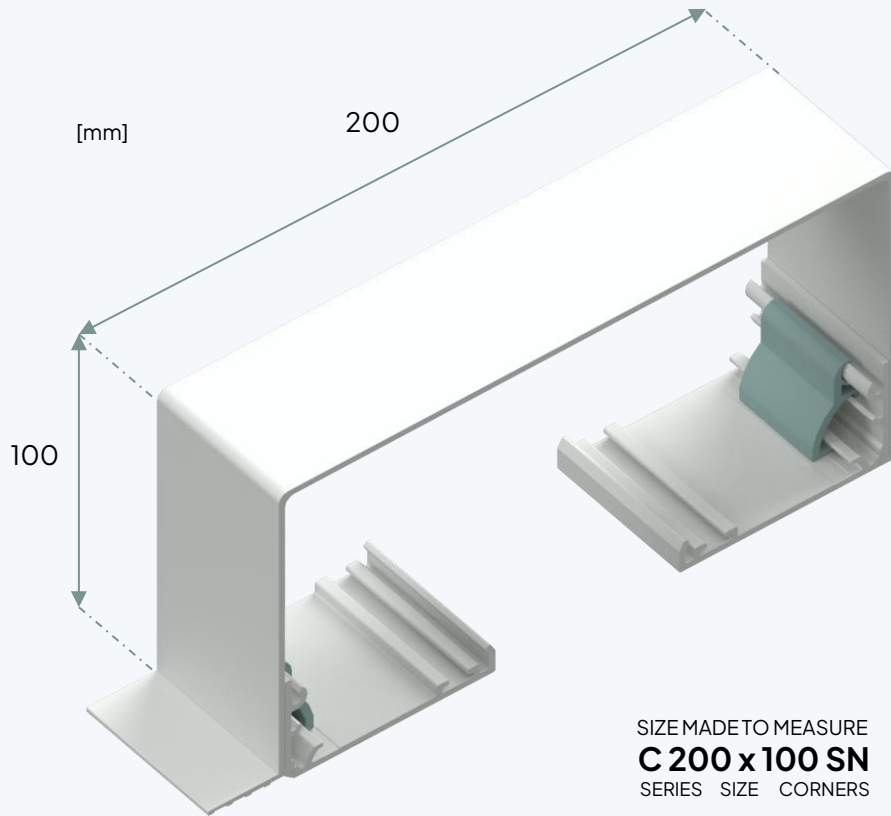
No flange



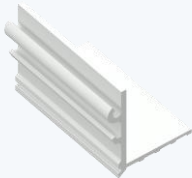
**P**

Perforated flange

## C SERIES – Example Boxes

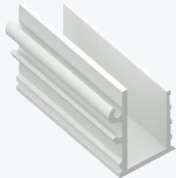


### Box Corners



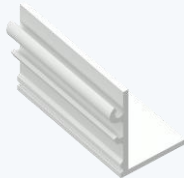
**S**

Skim coat flange



**U**

Upstand flange



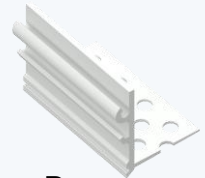
**V**

Visible plain flange



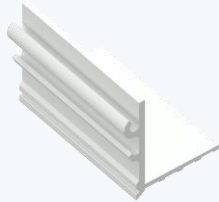
**N**

No flange



**P**

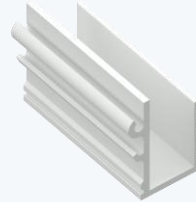
Perforated flange



**S CORNER**

ARTICLE: 87002

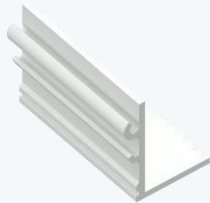
PRODUCT INFO:  
Skim coat flange front  
corner for local fabrication



**U CORNER**

ARTICLE: 87001

PRODUCT INFO:  
Upstand flange front corner  
for local fabrication



**V CORNER**

ARTICLE: 87003

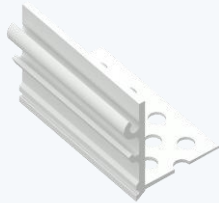
PRODUCT INFO:  
Visible plain flange corner  
for local fabrication



**N CORNER**

ARTICLE: 87000

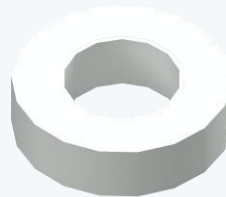
PRODUCT INFO:  
No flange front corner for  
local fabrication



**P CORNER**

ARTICLE: 87004

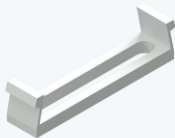
PRODUCT INFO:  
Perforated skim coat front  
corner for local fabrication



**C TAPE RAW**

ARTICLE: 87105

PRODUCT INFO:  
Double-sided Tape for box  
Fabrication, raw profiles  
(33m)

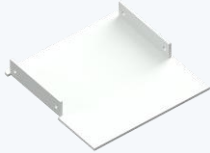


**CGC**

ARTICLE: 86043

PRODUCT INFO:  
Chain Guide Custom

## C SERIES – End Caps



### CEC Small

ARTICLE: 53023

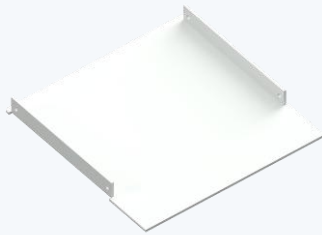
PRODUCT INFO:  
Custom End Cap up to  
100x100mm



### CEC Medium

ARTICLE: 53024

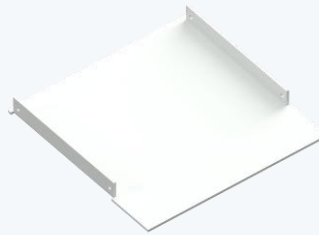
PRODUCT INFO:  
Custom End Cap above  
100x100 up to 130x130mm



### CEC Large

ARTICLE: 53025

PRODUCT INFO:  
Custom End Cap above  
130x130 up to 155x155mm



### CEC Extra Large

ARTICLE: 53026

PRODUCT INFO:  
Custom End Cap above  
155x155mm

## C SERIES – Cover Plates



### C65

ARTICLE: 86014

PRODUCT INFO:  
Cover 65mm, 6m



### C75

ARTICLE: 86015

PRODUCT INFO:  
Cover 75mm, 6m



### C85

ARTICLE: 86016

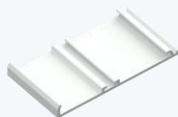
PRODUCT INFO:  
Cover 85mm, 6m



### C92

ARTICLE: 86010

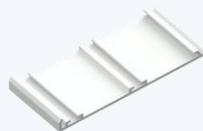
PRODUCT INFO:  
Cover 92mm, 6m



### C95

ARTICLE: 86017

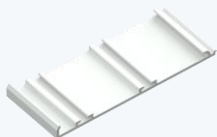
PRODUCT INFO:  
Cover 95mm if sold  
separately (included with  
boxes) 6m



### C115

ARTICLE: 86011

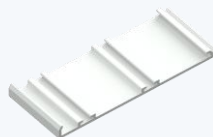
PRODUCT INFO:  
Cover 115mm, 6m



### C122

ARTICLE: 86018

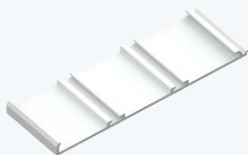
PRODUCT INFO:  
Cover 122mm, 6m



### C125

ARTICLE: 86012

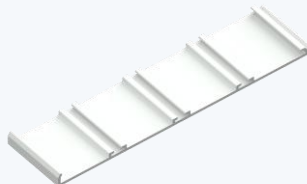
PRODUCT INFO:  
Cover 125mm, 6m



### C150

ARTICLE: 86013

PRODUCT INFO:  
Cover 150mm, 6m



### C200

ARTICLE: 86019

PRODUCT INFO:  
Cover 200mm, 6m

# Pelmet **P SERIES**

Custom pelmets for retro-fit solutions.

## P SERIES – Custom Pelmet's Made to Order



### P61x128

ARTICLE: 55000

PRODUCT INFO:  
Face-fix Pelmet 128mm high



### P61x153

ARTICLE: 55005

PRODUCT INFO:  
Face-fix Pelmet 153mm high



### P61x203

ARTICLE: 55010

PRODUCT INFO:  
Face-fix Pelmet 203mm  
high



### P90x128

ARTICLE: 55020

PRODUCT INFO:  
Extended Face-fix Pelmet  
128mm high



### P90x153

ARTICLE: 55025

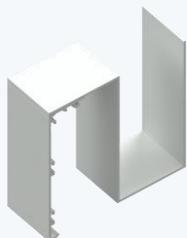
PRODUCT INFO:  
Extended Face-fix Pelmet  
153mm high



### P90x203

ARTICLE: 55030

PRODUCT INFO:  
Extended Face-fix Pelmet  
203mm high



### PS130x128

ARTICLE: 55045

PRODUCT INFO:  
Surface-Mounted S-  
Shaped Pelmet



### SPEC

ARTICLE: 52032

PRODUCT INFO:  
End cap for S Pelmet

# Modular **M** SERIES

Superior blinds concealment.

## M SERIES – Boxes and Covers



**M100x70**  
ARTICLE: 60103

PRODUCT INFO:  
Side Box for M100x100  
System



**M100x100**  
ARTICLE: 60101

PRODUCT INFO:  
Back Box for M100x100  
System



**M130x70**  
ARTICLE: 60102

PRODUCT INFO:  
Side Box for M130x130  
System



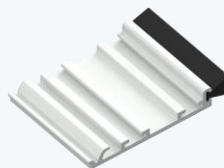
**M130x130**  
ARTICLE: 60100

PRODUCT INFO:  
Back Box for M130x130  
System



**MC50**  
ARTICLE: 60109

PRODUCT INFO:  
Modular Cover 50mm



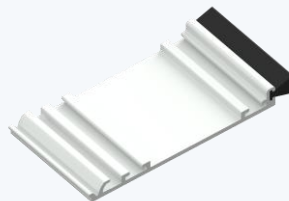
**MCB60**  
ARTICLE: 60117

PRODUCT INFO:  
Modular Cover with Brush,  
60mm



**MC80**  
ARTICLE: 60108

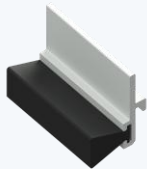
PRODUCT INFO:  
Modular Cover 80mm



**MCB90**  
ARTICLE: 60118

PRODUCT INFO:  
Modular Cover with Brush,  
90mm

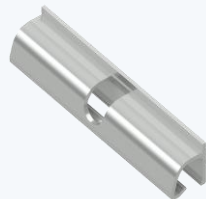
## M SERIES – Boxes and Covers



### MBH

ARTICLE: 60119

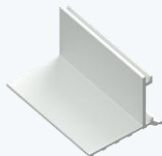
PRODUCT INFO:  
Modular Brush Holder for  
Box



### MCH

ARTICLE: 60110

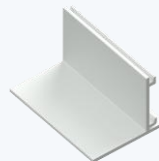
PRODUCT INFO:  
Modular Cover Hinge



### MSF

ARTICLE: 60111

PRODUCT INFO:  
Modular Skim Coat Flange



### MPF

ARTICLE: 60112

PRODUCT INFO:  
Modular Visible Plain Flange



### MSC70

ARTICLE: 60106

PRODUCT INFO:  
Modular Side Cover 70mm



### MSC100

ARTICLE: 60105

PRODUCT INFO:  
Modular Side Cover 100mm



### MSC130

ARTICLE: 60104

PRODUCT INFO:  
Modular Side Cover 130mm



### MWB

ARTICLE: 60107

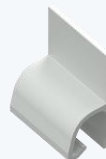
PRODUCT INFO:  
Modular Wall Bracket



**MBB1**

ARTICLE: 60113

PRODUCT INFO:  
Modular Blind Bracket for  
Lutron Bracket



**MWH**

ARTICLE: 60114

PRODUCT INFO:  
Modular Wall Hinge for  
installation without Head  
Box



**MEC100x70**

ARTICLE: 63103

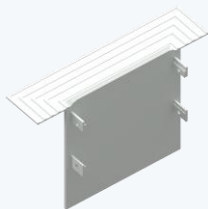
PRODUCT INFO:  
End Cap for M100x70



**MEC100x100**

ARTICLE: 63101

PRODUCT INFO:  
End Cap for M100x100



**MEC100x100S**

ARTICLE: 63120

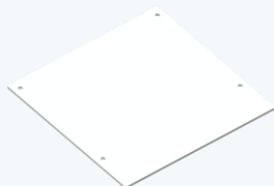
PRODUCT INFO:  
End Cap for M100x100 with  
Skim Coat Flange



**MEC130x70**

ARTICLE: 63102

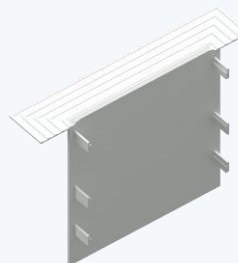
PRODUCT INFO:  
End Cap for M130x70



**MEC130x130**

ARTICLE: 63100

PRODUCT INFO:  
End Cap for M130x130



**MEC130x130S**

ARTICLE: 63110

PRODUCT INFO:  
End Cap for M130x130 with  
Skim Coat Flange

# Box **ACCESSORIES**

To align and connect boxes and covers.

## BOX ACCESSORIES – Accessories for different uses.



### CH25

ARTICLE: 86030

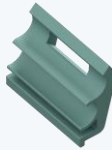
PRODUCT INFO:  
Cover Hinge sold in packs of  
25 pcs



### CH25H

ARTICLE: 86031

PRODUCT INFO:  
Hinge Extra Strong sold in  
packs of 25 pcs



### CAH

ARTICLE: 56131

PRODUCT INFO:  
Cable holder (3d printed)



### CAJB

ARTICLE: 56136

PRODUCT INFO:  
Cable junction box



### AFB100

ARTICLE: 56250

PRODUCT INFO:  
Acoustic Foam Block 100



### AFB130

ARTICLE: 56251

PRODUCT INFO:  
Acoustic Foam Block 130



### SPLI1

ARTICLE: 53100

PRODUCT INFO:  
Splice pin to align boxes and  
Tracktrim tracks



### SPLA1

ARTICLE: 53010

PRODUCT INFO:  
Splice plate with screws to  
align cover plates



### HG1

ARTICLE: 56130

PRODUCT INFO:  
Grommet for Cable Entry

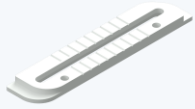


### Touch-Up Paint Pen

ARTICLE: 89076

PRODUCT INFO:  
Touch-Up Paint

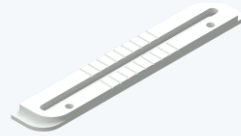
## BOX ACCESSORIES – Blind Brackets



### UNI100

ARTICLE: 56200

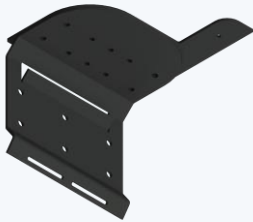
PRODUCT INFO:  
Universal bracket 100 S SERIES  
(pair)



### UNI130

ARTICLE: 56201

PRODUCT INFO:  
Universal bracket 130 S  
SERIES (pair)



### LR130

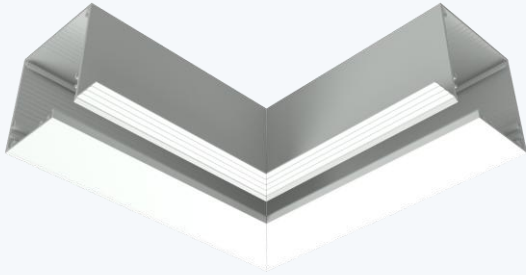
ARTICLE: 56212

PRODUCT INFO:  
Blindspace Bracket (pair) for  
Lutron 100/150 Shades

# Bespoke **SERVICES**

Custom cutting and other bespoke requirements.

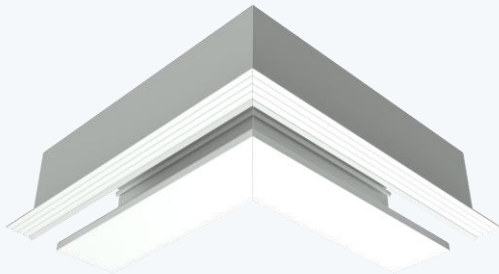
**Bespoke SERVICES** – Custom cutting and other bespoke requirements.



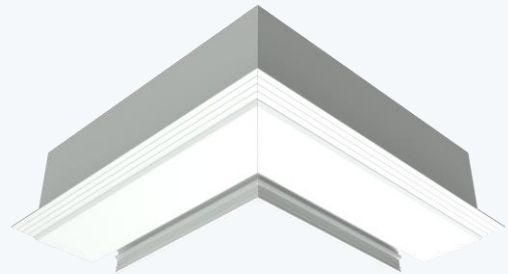
OUTSIDE CORNER  
BLINDS TOWARDS ROOM



OUTSIDE CORNER  
BLINDS TOWARDS WINDOW



INSIDE CORNER  
BLINDS TOWARDS ROOM



INSIDE CORNER  
BLINDS TOWARDS WINDOW

THANK YOU!

Please feel free to get in touch:

[sales@blindspace.com](mailto:sales@blindspace.com)

+44 20 8798 3945