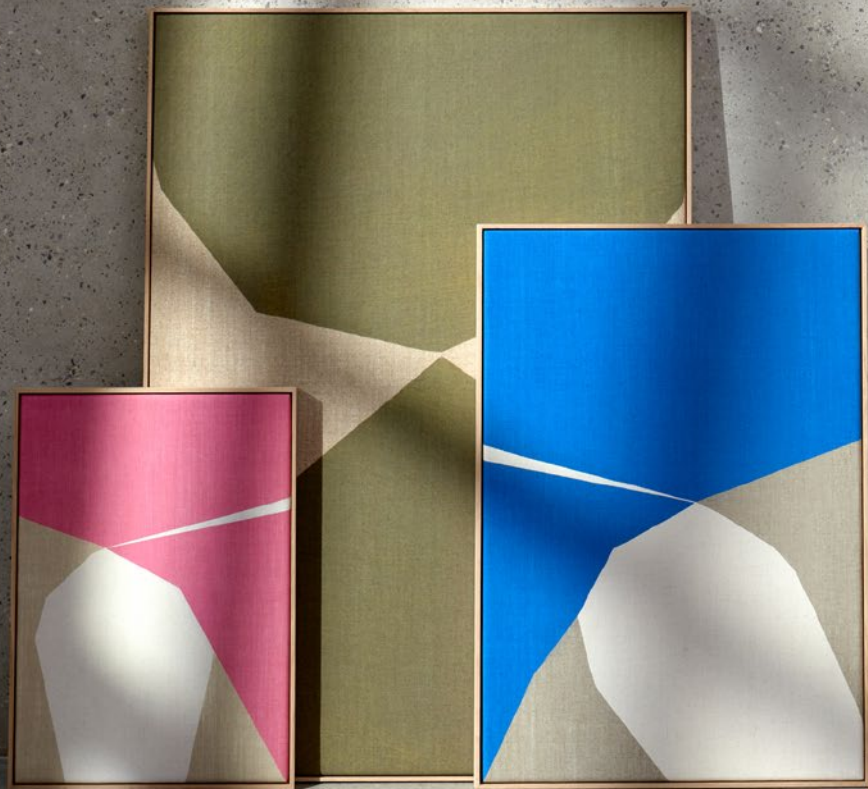


**abstracta**



**Abstracta x Wall of Art**

Abstracta and art platform Wall of Art have collaborated to develop a unique solution that combines acoustics with art.



Create harmonious soundscapes while giving spaces personality and character with works from exciting artists!

The motifs are selected to suit many different settings while at the same time work well together.





The acoustic art panels are available in different sizes. Their elegant frames are made from untreated oak. Although the panels are no thicker than 45 millimetres, their acoustic capacity is very high.



Two functions in one  
– artwork that adds  
personality to the  
interior while serving  
as an effective  
acoustic solution.

# Product family



**Wall of Art** is a digital platform showcasing contemporary art from a curated selection of exciting artists. Based in Stockholm, the company has successfully inspired people to incorporate art into their interior design. The idea was born in 2016 when founders, artist Annika Hultgren and entrepreneur Nicklas Claesson, were designing the interior of their new apartment.

In collaboration with **Abstracta**, Wall of Art has developed a unique solution that seamlessly combines acoustics with art. The goal is to create harmonious soundscapes while adding personality and character to spaces with works from talented artists. This collection serves a dual purpose—artwork that strengthens a brand’s identity while also providing an effective acoustic solution.

The selected motifs are designed to complement a variety of environments while also working well together as a cohesive collection. The range includes both bold, colorful pieces

and more minimalist designs, offering diversity in both temperament and technique.

Each artwork is printed on cotton fabric and backed by a highly effective sound absorber made from textile waste and recycled polyester from PET bottles, ensuring minimal environmental impact. The well-crafted oak frame enhances the tactile feel and gives the panels an elegant, refined look—making them ideal for settings such as restaurants, hotel lobbies, and co-working spaces.

Despite their slim 45 mm profile, the panels offer exceptional acoustic performance. They are available in three sizes (including frame):  
1025 x 1425 mm  
725 x 1025 mm  
525 x 725 mm



**Februari**  
Evelina Kroon



**Maj**  
Evelina Kroon



**November**  
Evelina Kroon



**December**  
Evelina Kroon



**Copenhagen**  
Annika Hultgren



**Colourbomb 04**  
Annika Hultgren



**Capri**  
Annika Hultgren



**Colourbomb 01**  
Annika Hultgren



**Fleur fleur**  
Lisa Wirenfelt



**Flower bath**  
Lisa Wirenfelt



**Limoncello**  
Lisa Wirenfelt



**Format figure**  
Lucrecia Rey Caro



**Nexus Pink**  
Lena Wigters



**Nexus Blue**  
Lena Wigters



**Nexus Green**  
Lena Wigters



**Woman sleeping**  
Lucrecia Rey Caro

# Designers



## **Annika Hultegren**

It all started with a picture wall that would be the centerpiece of the new apartment. Today, Annika runs the platform [WallofArt.com](http://WallofArt.com) and is one of the artists who sells her art exclusively via the platform. She creates her art according to colors and shapes that inspire her. Annika's abstract paintings symbolize dreams, and the dream is Wall of Art.



## **Evelina Kroon**

Evelina is a cross-disciplinary creative within the fields of painting, coloring and set-design, exploring the borders between fine and decorative arts. She entertains a sort of horror vacui by taking over rooms with her taping and painting—a graphic yet eclectic aesthetic that brings traditionally female crafts to mind. She was educated at Konstfack University of Arts, Crafts and Design and lives and works in Stockholm, Sweden.



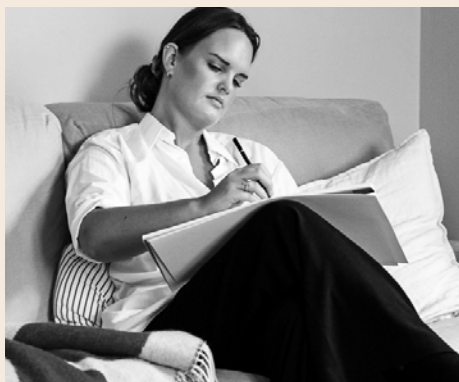
## **Lucrecia Rey Caro**

Lucrecia is a full-time artist and graphic designer from Cordoba, Argentina. A curious person who loves to experiment with new concepts and ideas. Lucrecia uses her art to express her thoughts and feelings. She draws inspiration from everyday life, nature, poetry, films and music.



### **Lena Wigers**

Lena is an illustrator and artist with her own studio in Stockholm. She works with a blend of realistic portraits, fashion illustrations, and abstract art. Her motifs are usually crafted by hand using mixed techniques, and the final touches are added digitally.



### **Lisa Wirenfelt**

Lisa grew up with a mother who used to paint watercolor paintings in a light pink studio. She never thought she would enjoy the brush in her hand, but when her mother saw one of many sketches and said “how nice” – it was probably the words that somehow started it all. Lisa’s paintings are very much about color. Combinations that make her feel good, words that have a greater meaning and patterns that only arise.

---

## **Abstracta contact – Head office**

### **Postal address**

Abstracta AB  
Box 75  
363 03 Lammhult, Sweden  
+46 472 26 96 00

### **Visitor address**

Lammengatan 2  
363 45 Lammhult

### **Sales support**

+46 472 26 96 50  
sales@abstracta.se

# Abstracta x Wall of Art in brief.

A unique combination of high-quality artwork and sound absorption, improving both aesthetics and room acoustics.

Advanced printing techniques on premium cotton canvas ensure vibrant colours with remarkable depth and detail.

Built with a sound absorber made from recycled PET bottles and textile waste, reducing environmental impact.

Despite a slim 45 mm profile, the panels offer outstanding acoustic performance, making them ideal for offices, restaurants, and co-working spaces.

The panels are available in three sizes: 525 x 725 mm, 725 x 1025 mm, and 1025 x 1425 mm.

Premium craftsmanship. Exclusive frame in natural, untreated solid oak.

Combine multiple panels with each other – both to create a visually expressive ensemble and to further enhance the soundscape of your space.

