

Architectural Catalog



Kwik-Wall

Operable Walls

STC Rated 42 - 56
3" & 4" thick panels
Max height 24'
Individual Panels
Hinged Pair
Electric

Acoustical Glass Walls

STC Rated 50
4" thick panels
Individual Panels
Hinged Pair

Glass Walls

3/8" & 1/2" thick panels
Max height 10'
Individual Panels
Hinged Pair

Accordions

STC 35 - 40
Max height 16'
Max width 25'





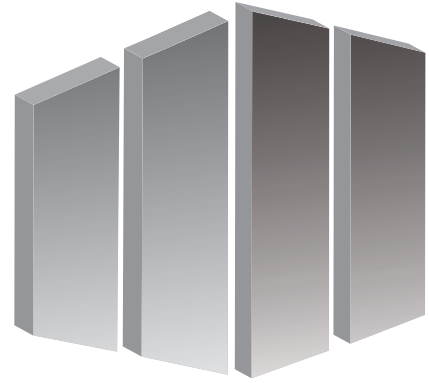
Kwik-Wall Company
4650 Industrial Ave
Springfield, IL 62703

www.kwik-wall.com
info@kwik-wall.com
217.522.5553





Model 3020 Wall System . LaGuardia Plaza Hotel . Queens, NY



OPERABLE WALLS

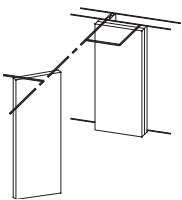
OPERATION TYPE	MODEL	MAX. PANEL HEIGHT	MAX. WALL WIDTH	STACK ARRANGEMENT	STC RATINGS
----------------	-------	-------------------	-----------------	-------------------	-------------

INDIVIDUAL PANELS - CURVE & DIVERTER



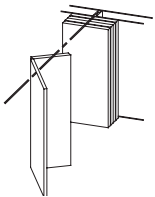
2010	16' 2" (4.93m)	unlimited	Perpendicular, Parallel or Remote	42, 45, 49, 50, 51
3010	24' 2" (7.36m)	unlimited	Perpendicular, Parallel or Remote	43, 46, 48, 50, 52, 56

INDIVIDUAL PANELS - MULTI-DIRECTIONAL



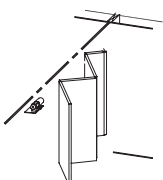
2020	16' 2" (4.93m)	unlimited	Perpendicular, Parallel or Remote	42, 45, 49, 50, 51
3020	24' 2" (7.36m)	unlimited	Perpendicular, Parallel or Remote	43, 46, 48, 50, 52, 56
3020 WT	12' 2" (3.7m)	unlimited	Perpendicular, Parallel or Remote	43, 46, 48, 50, 52, 56

HINGED PAIRS

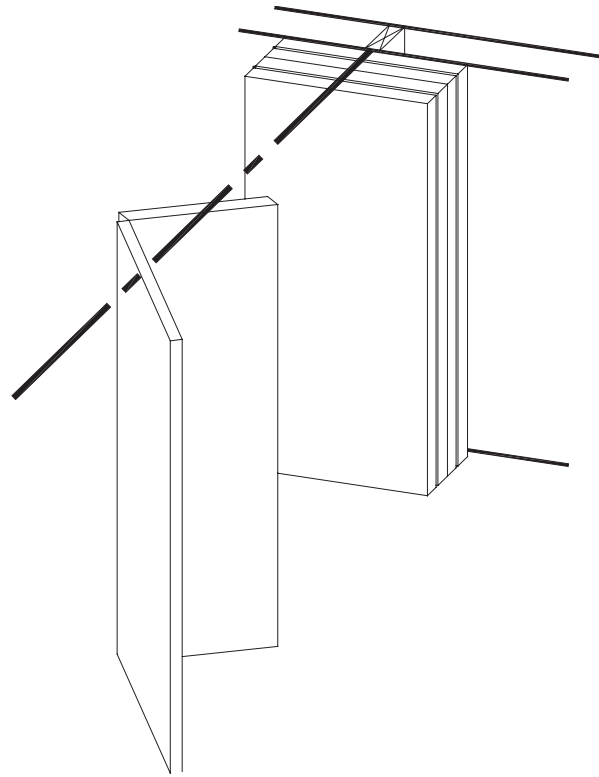


2030	16' 2" (4.93m)	unlimited	Center Stack	42, 45, 49, 50, 51
3030	16' 2" (4.93m)	unlimited	Center Stack	43, 46, 48, 50, 52, 56

CONTINUOUSLY HINGED - ELECTRIC



2050	14' 2" (4.32m)	42'3" (12.9m)	Center Stack	42, 45, 49, 50, 51
3050	24' 2" (7.36m)	99' 9 3/8" (31.41m)	Center Stack	43, 46, 48, 50, 52, 56



Hinged Pair operating system are the most requested configuration. This feature is a system that uses paired (2) panels that are hinged together and move simultaneously on a straight track and are center stacked. This wall system allows the panels to be moved easily, and efficiently.

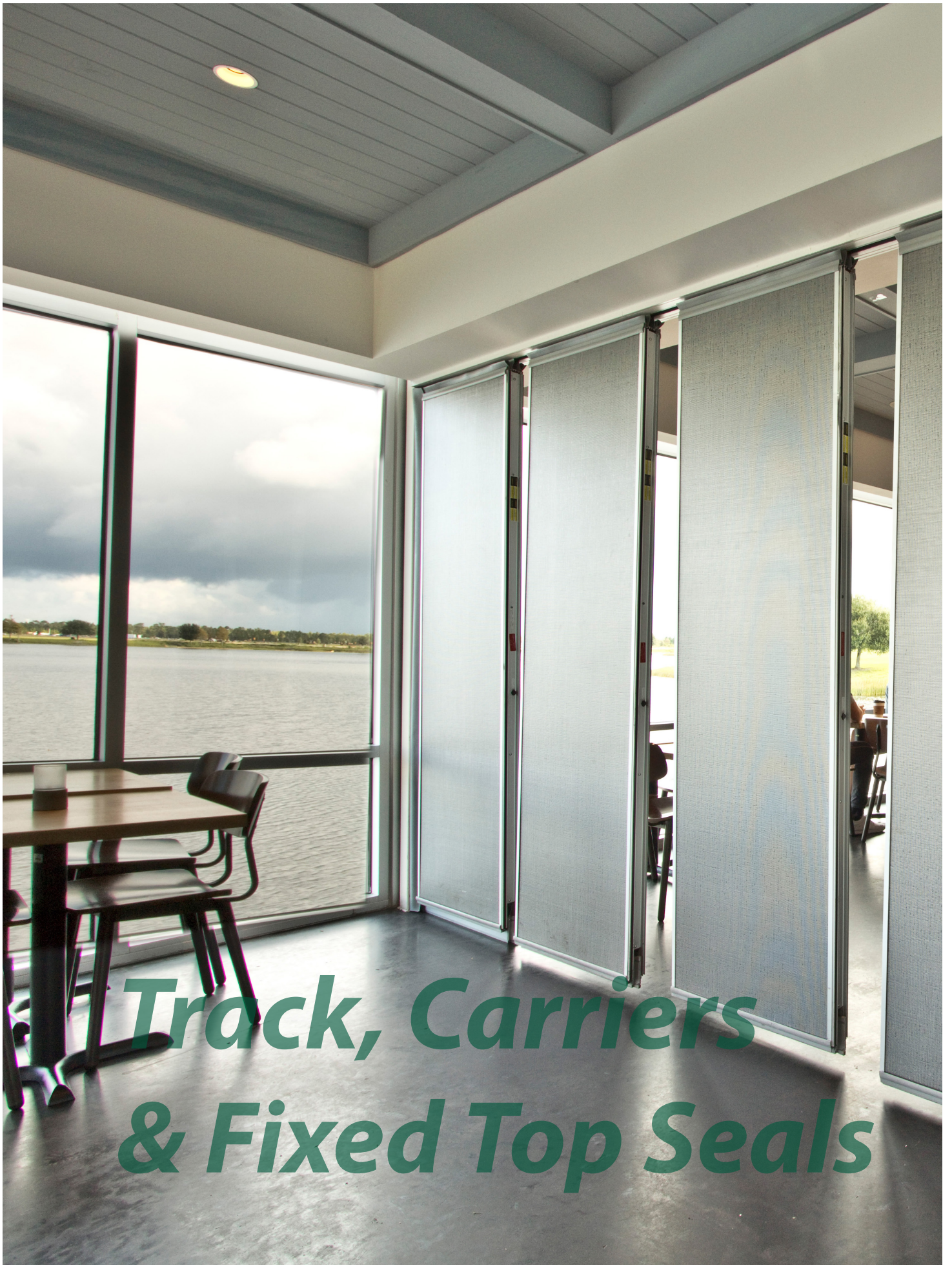
Model 2030 offers a range in STC of 42 to 51, that have been certified in an independent acoustical laboratory in accordance with ASTM E90 and ASTM E 413.

MODEL 3030 offer a range in STC of 43 to 56. The model 3030 construction features panels that are 4" [101.6] thick, manufactured of a durable roll-formed steel frame, and standard steel skins for maximum Durability and sound control.



Model 2030 . Don Pepe Restaurant . Newark, NJ.





***Track, Carriers
& Fixed Top Seals***

Kwik-Wall Warranty



Leading the industry with the highest quality walls, Kwik-Wall proudly offers a ten-year warranty

Kwik-Wall Company warrants every operable wall, glass wall, accordion partition and Kwik-Span support system, and its component parts to be free from defects in material and workmanship for a period of five (5) years from date of delivery to the original purchaser, when installed by an authorized Kwik-Wall distributor.

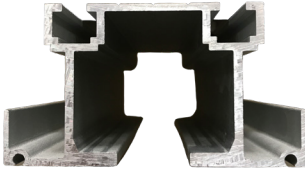
Kwik-Wall also warrants the track, carriers, and fixed top seals and its component parts to be free from defects in material and workmanship for a period of ten (10) years.

Model 3050 continuously-hinged electric wall, because of its motorized track and carrier system, will continue to carry the standard five (5) year warranty for all its components.

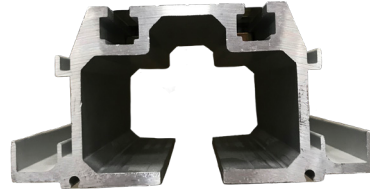
To view the complete Kwik-Wall warranty, please visit us online at: <https://www.kwik-wall.com/warranty/>

Track Options

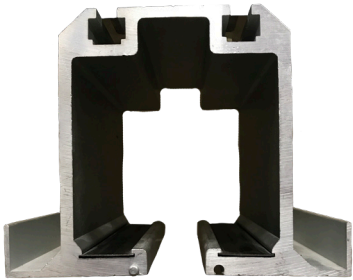
Kwik-Wall Operable and Glass Walls can be mounted on drop rods or by direct mount to the overhead support system.



425 Aluminum Track system
Hinged Pair
Models: 2030, 3030 and 3030GL



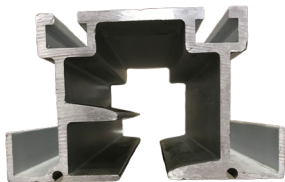
850 Aluminum Track System (shallow)
Hinged Pair and Curved & Diverter
Models: 2010, 2030, 3010, 3030,
3010GL, and 3030GL



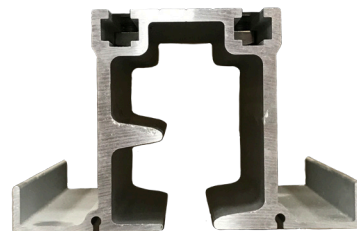
850 Aluminum Track System (tall)
Hinged Pair and Curve & Diverter
Models: 2010, 2030, 3010, 3030
3010GL, and 3030GL



850 Steel Track System
Hinged Pair
Models: 2030, 3010, 3030, 3010GL and
3030GL



425 Aluminum Track System
Multi-Directional
Models: 2020, 3020, and 3020GL



850 Aluminum Track System
Multi-Directional
Models: 2020, 3020, 3020WT, and
3020GL



Model 2030 . Able Cine . Industry City, Brooklyn, NY.



Illona, Pivot Stacking

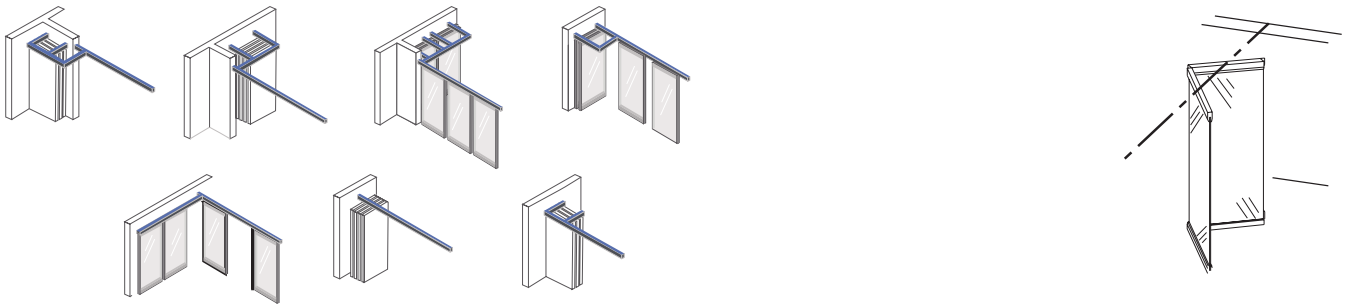


Stella, with back painted writing surface

Luminous

PRODUCT FEATURES

Model	Pivot Door	Fully Automatic	Color Options	Continuously Hinged	Individual Panels	Paired Panels	Lock Options	STC
Stella	✓	✓	✓	✓	✓		✓	44 & 50
Luna	✓		✓	✓	✓		✓	43
Ava	✓		✓	✓	✓	✓	✓	—
Illona	✓		✓	✓	✓		✓	35
Mata	✓		✓	✓	✓	✓	✓	—



Individual Panels - Perpendicular, Parallel, Remote or Custom Stack (Stella, Luna, Ava, & Illona)

Individual panels are top supported by two (2) carriers that operate in the track system that allows panels to move and turn effortlessly through intersections that are engineered for heavy glass panels. The versatility of stack arrangements includes perpendicular stack, parallel stack, remote or curve & diverter.



Hinged Pairs Center Stack (Meta)

Hinged pair panels are panels hinged together in groups of two (2), unless otherwise specified. Panels are top-supported by one (1) carrier in each panel. The Center Stack arrangement provides panel storage at one or both ends of the wall's installed position.



Luna high-performance sound control 43 STC



Ava Trimless . Cramer Building . New York City

INTRODUCING Luminous™ Glass Walls – the industry’s most comprehensive and full-featured lineup of movable glass wall products. With best-in-class sound control, panel automation, switchable smart glass, multiple layout and configuration options and in nearly unlimited finishes, LUMINOUS glass walls provide nearly limitless versatility in a sophisticated and refined style, adding a unique vision element to your space division designs.

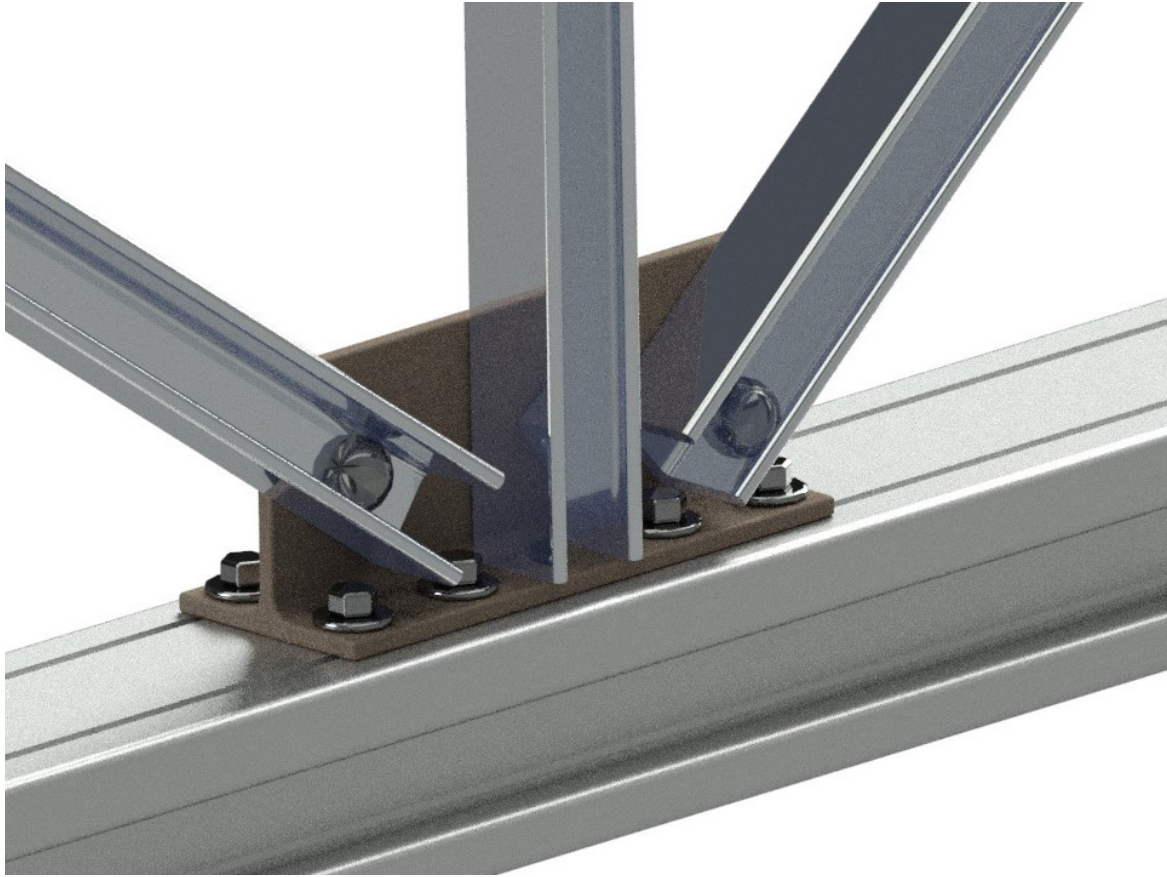


Moveable Glass Walls operate on a fixed-top suspension and securely fastens in place by a floor locking mechanism. These are three types of locking systems.

- 1.) foot bolts (face or side activated).
- 2.) Thumb turns
- 3.) Key turns



KWIK-SPAN

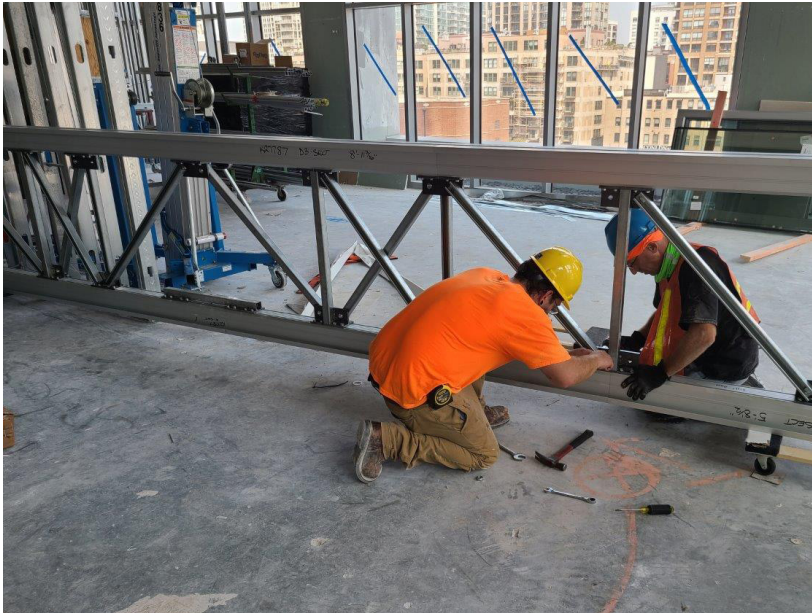


New from our innovative engineering group, Kwik-Span™ is the perfect solution for high cost and long lead times that typically accompany structural support requirements for Operable Partition installations involving structural engineers, steel fabricators, steel support erectors – most of whom are not familiar with the unique nature of partition support requirements

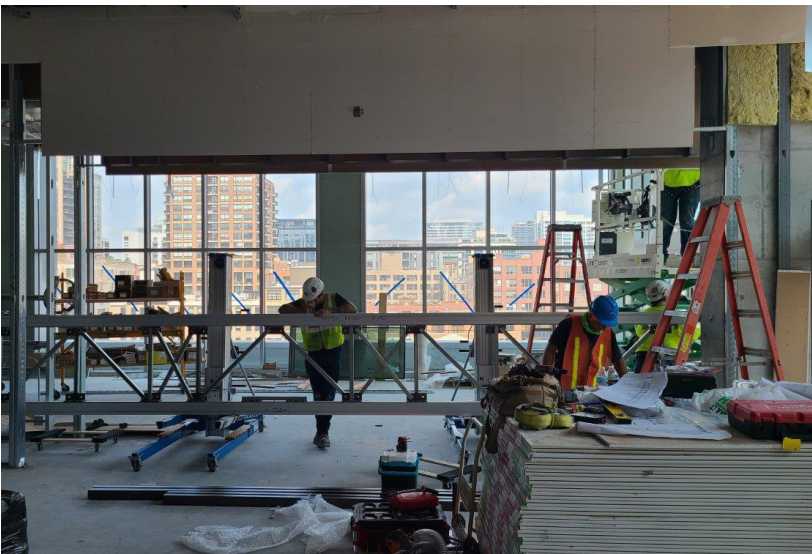
Kwik-Span can be fully recessed into the ceiling plenum, partially recessed or installed below ceiling with side truss panels matching the operable wall finish material.

Kwik-Span's structural aluminum posts can be installed against finished opening walls, recessed into post pockets or installed behind the finish sheet rock.

Sized in components that will fit in most construction elevators, Kwik-Span eliminates the need for cranes to lift steel beams into your building and glaziers to remove and reinstall exterior windows for access.



Single-source your operable wall support from Kwik-Wall along with your new operable wall, Kwik-Span saves time and money by eliminating the superfluous cost and project management overhead associated with multiple involved parties, including structural engineering firms, steel beam suppliers and fabricators, and cranes and crane operators.



Reduce your project's time line! Perfect for quick-turn projects or in retrofit situations where the existing structure isn't capable of supporting the operable wall

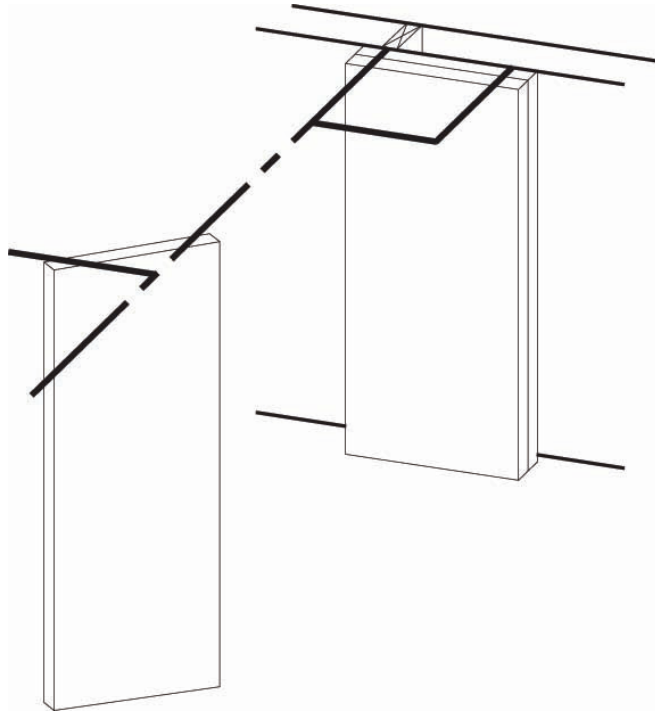


Kwik-Wall has pre-engineered Kwik-Span independent support to carry the exact load of your Kwik-Wall partition system, eliminating a significant percentage of the total cost, effort and risk associated with the typical support design, fabrication and install process. Kwik-Wall certified distributors furnish and install the complete support system into your project with the minimum lead time. Perfect for retrofit tenant improvement projects, as well as for new building construction.



Model 3020 . Holy Family Parish . Manchester, PA.





Multi-Directional operating system travels manually through 90 degree (X, L, and T) intersections. This versatile system is constructed of individual panels that suspend from a structural aluminum track.

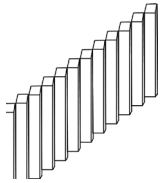
2020 Model offers a range in STC of 42 to 51 to meet the middle range of acoustical requirements at a very competitive price range.

3020 Model offers a range in STC of 43 to 56. Offering you the highest STC in the industry. This robust 4" thick panel system is designed to give you years of worry-free operation.

ACCORDION PARTITIONS

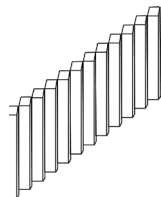
OPERATION TYPE	MODEL	MAX. PANEL HEIGHT <small>Per door max. opening</small>	MAX. WALL WIDTH <small>Per door max. opening</small>	FINISH OPTIONS	STC RATINGS
----------------	-------	---	---	----------------	-------------

ACCORDION - SOUND DIVIDER



VL-2	16' 0" (4.90m)	25' 0" (7.62m)	Vinyl, Fabric, Carpet	35
VL-6	16' 0" (4.90m)	25' 0" (7.62m)	Vinyl, Fabric, Carpet	38
VL-8	16' 0" (4.90m)	25' 0" (7.62m)	Vinyl, Fabric, Carpet	40

ACCORDION - SITE DIVIDER



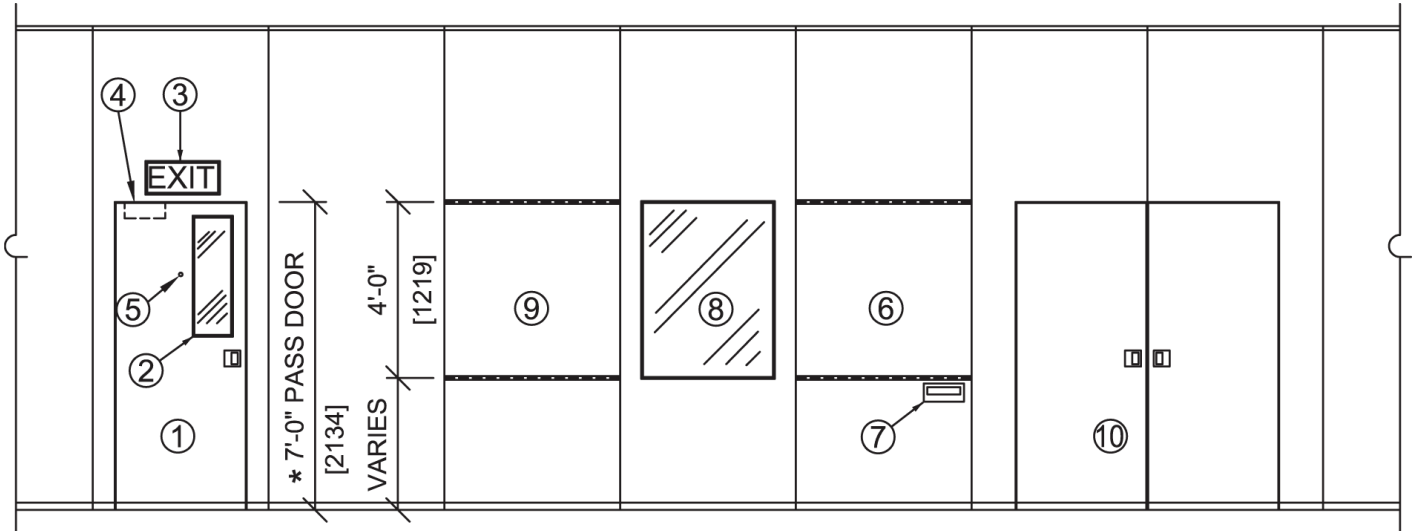
MK-XX	16' 0" (4.90m)	25' 0" (7.62m)	Vinyl, Fabric, Carpet	-
MK-X	16' 0" (4.90m)	12' 0" (3.05m)	Vinyl, Fabric, Carpet	-







Options & Accessories



① **Pass Door**
(Single or Double)

② **Pass Door Vision Lite**

③ **Exit Signs**

④ **Door Closure**

⑤ **Peep Hole**

⑥ **Writing Surfaces**
Liquid Chalk Surface (LCS) or glass

⑦ **Chalk Trays**

⑧ **Panel Vision Lites**

⑨ **Tack Boards**

⑩ **Pocketdoors**
(Single or Double)

*Product Details and Specifications also available at:

bimobject[®]



www.kwik-wall.com

4650 Industrial Ave
Springfield, Illinois, 62703
USA

toll free: 800.280.5945 . p. 217.522.5553 . f. 217.522.1170

info@kwik-wall.com