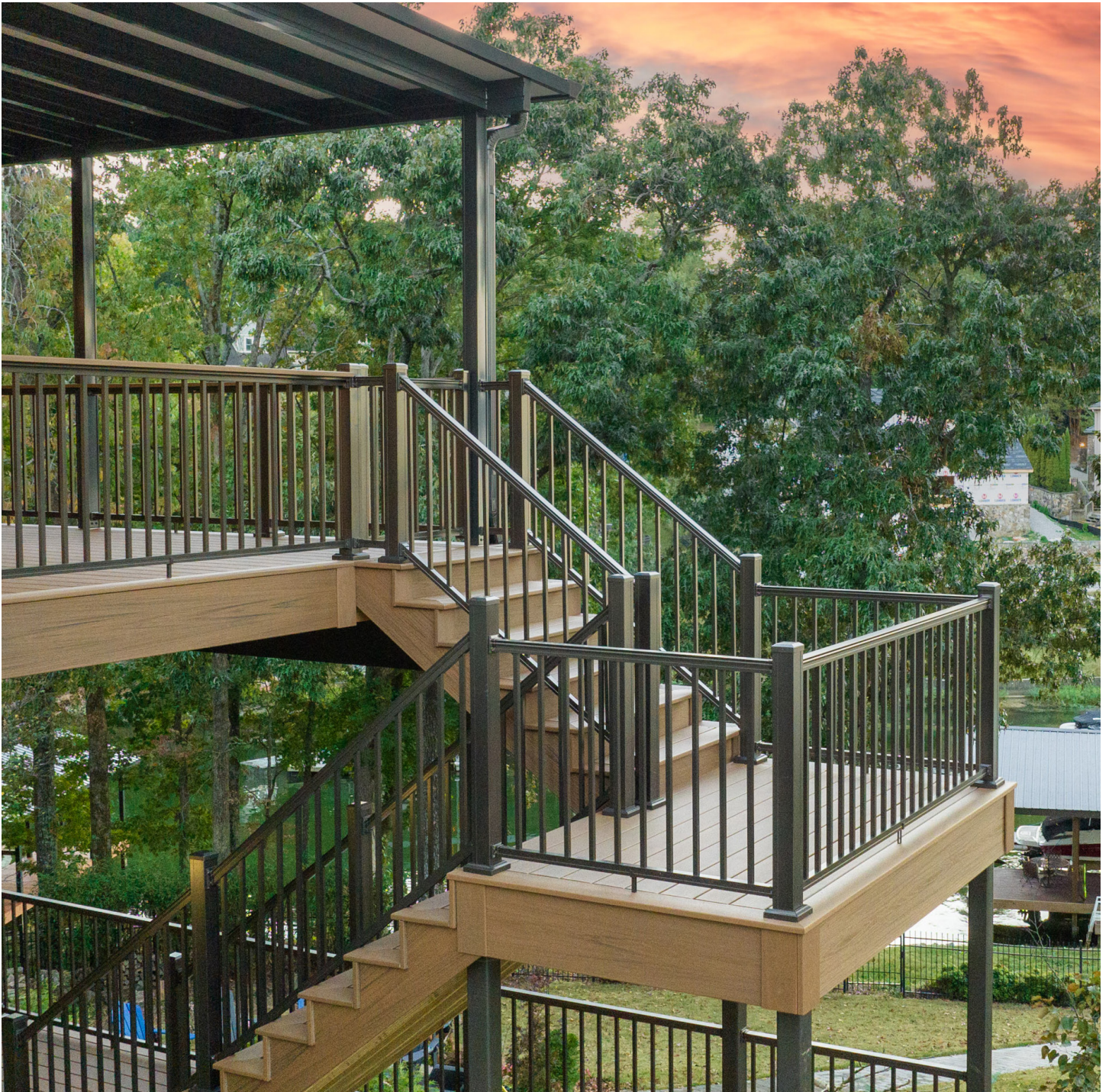




KEYLINK

ALUMINUM **RAILING**



SURROUND YOURSELF WITH STYLE



RAILING SHOULD NEVER BE AN AFTERTHOUGHT

Railing is the first thing you see when you step onto your deck, it's essential for safety, and it literally surrounds you at every turn. Choose railing that sets the tone and matches the quality you want in the rest of your outdoor living space.

Keylink aluminum railing is the premier choice for both residential and commercial spaces. Contractors and builders praise Keylink's quality and the thoughtful details that make it easy to install. Home and business owners love Keylink's unique design and premium craftsmanship.

*Pictured Above: American Series in
Textured Black with Square Balusters*



WHAT IS KEY-LINK QUALITY?

- AAMA 2604 standard powder coating on railing and accessories to promote weatherability, with AAMA 2605 standard available for additional protection
- IBC or IRC code compliance for peace of mind and safety
- High-quality aluminum with vinyl inserts to hold balusters snugly and prevent rattling
- Limited lifetime warranty and 5-year prorated labor warranty



MANUFACTURED IN THE USA

Keylink's products are proudly designed and manufactured in the USA to ensure a quality fit and finish.



Keylink has been **PCI certified** through the Powder Coating Institute. Powder coating is the solution to keeping aluminum railing and fencing from fading and helping it to retain its color.

CHESAPEAKE SERIES

ENTERTAIN WITH ELEGANCE

This well-designed drink rail brings high-end form and function to your outdoor living. You and your guests will enjoy the convenience of having a place to rest drinks and plates, while your contractor will appreciate how quickly and easily the top cap of your choice attaches to our specially designed profile.

Chesapeake coordinates with Keylink's American Series for those who wish to use deckboard rail and standard railing together.



**ENGINEERED FOR
UNDER-RAIL LIGHTING**





Textured White with Horizontal Cable



Textured Black with Square Balusters



Textured Bronze with Square Balusters

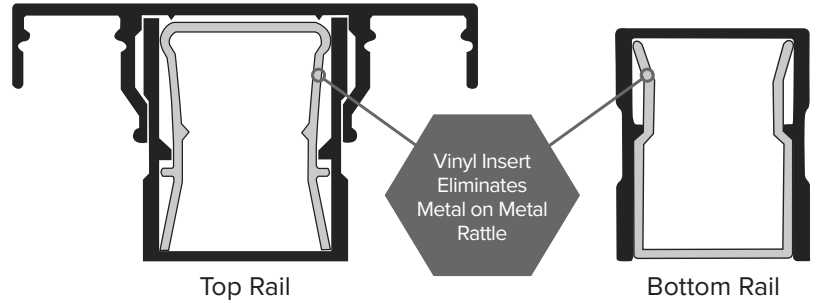


Matte Black with Vertical Cable

CHESAPEAKE SERIES

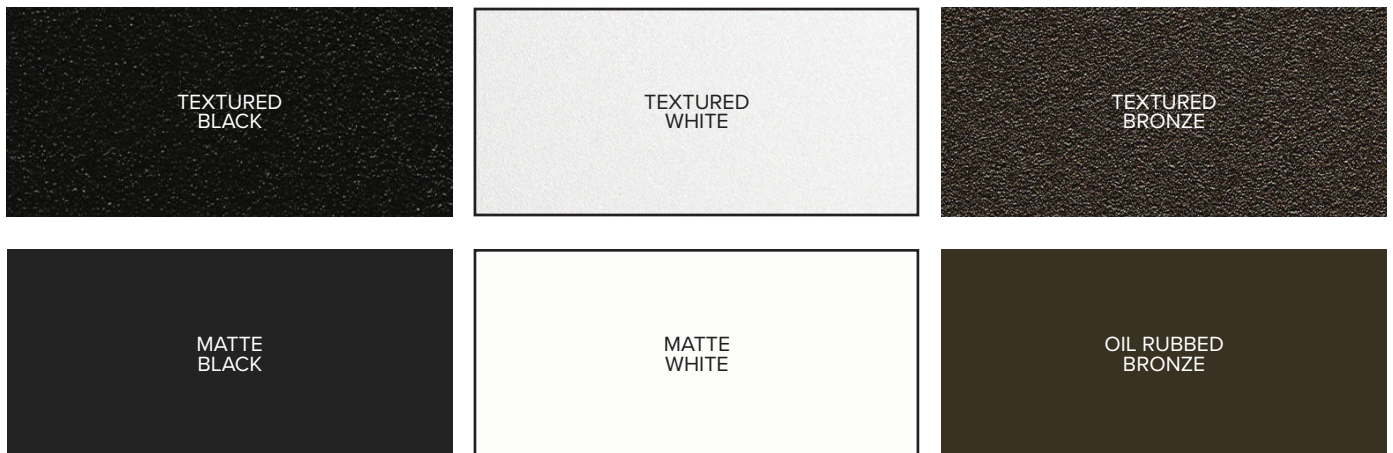
PRODUCT DETAILS

- Level and stair rail lengths come in 6' or 8' sections
- Available in 36" or 42" heights
- Meets IRC and IBC (42" only) code requirements
- Boxed sections include top and bottom rails, mounting brackets and hardware, 'infill' and the installation guide

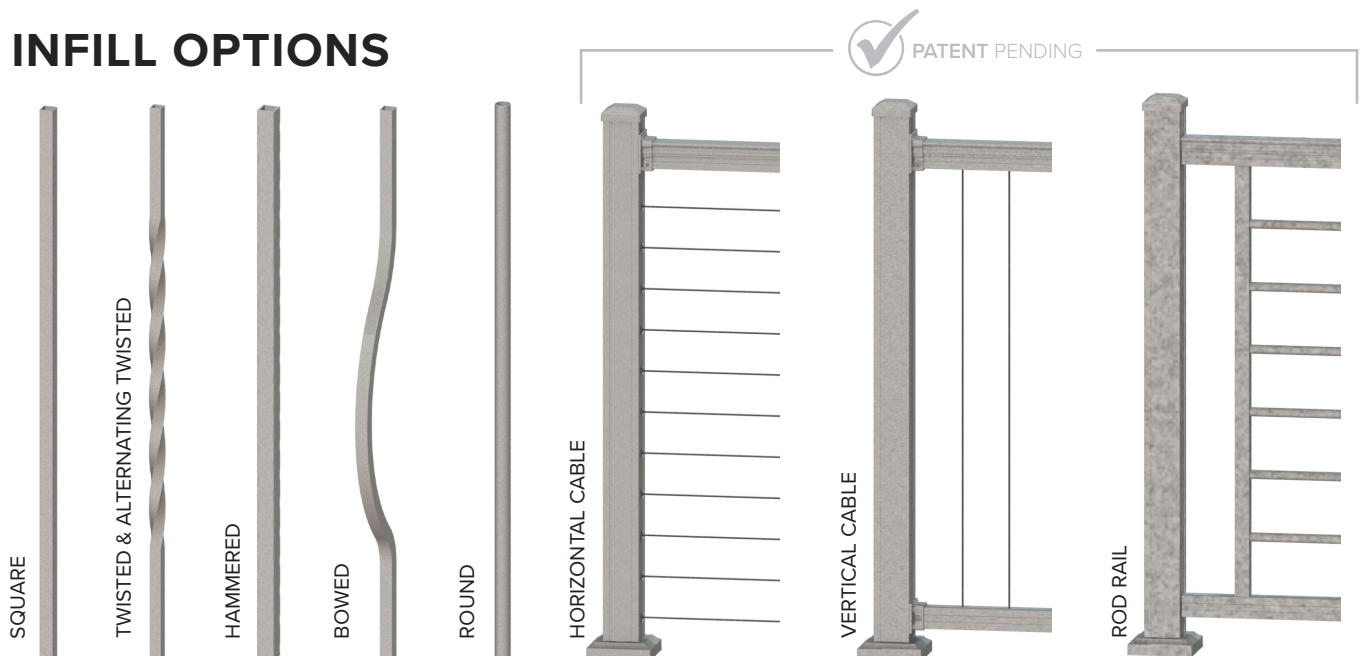


*Except Horizontal Cable

STANDARD COLORS



INFILL OPTIONS



AMERICAN SERIES —————

BRING TIMELESS LOOKS HOME

Keylink's top-selling aluminum railing has a clean flat-top profile for a modern yet classic style. This versatile railing complements any design and can be paired with aluminum balusters or with Keylink's horizontal or vertical cable infill for a truly custom look.







Textured Black with Vertical Cable



Textured Black with Square Balusters



Matte White with Black Square Balusters



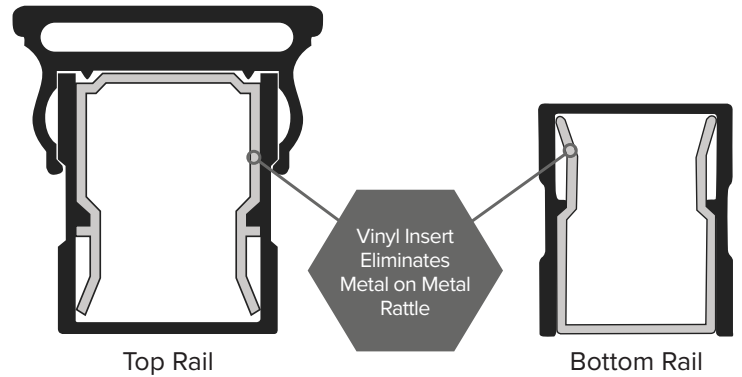
Textured Black with Horizontal Cable

AMERICAN SERIES

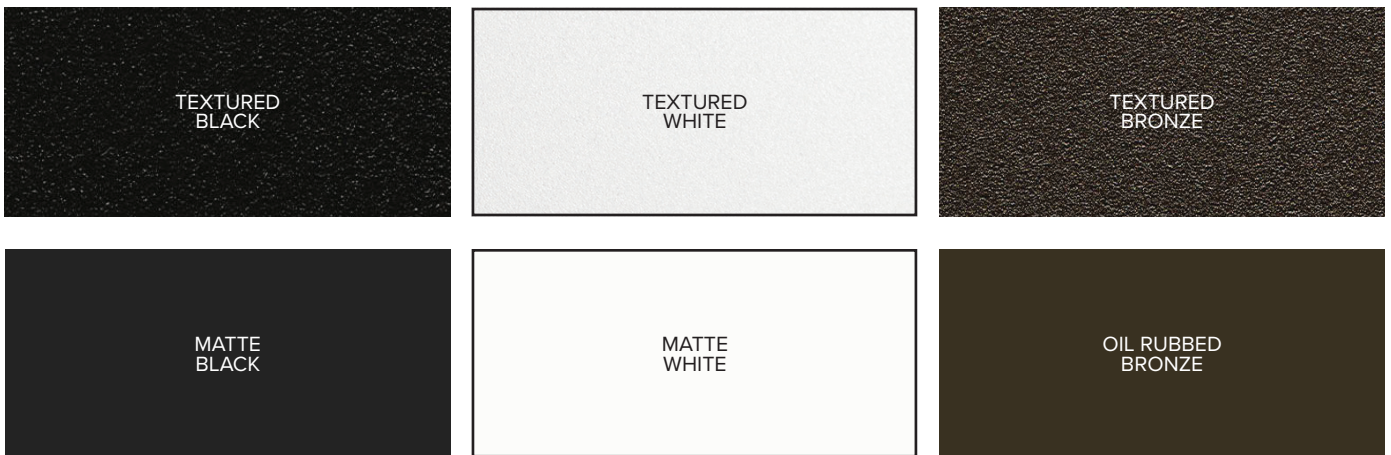
PRODUCT DETAILS

- Level and stair rail lengths come in 5', 6', 7' or 8' sections
- Available in 36" or 42" heights
- Meets IRC and IBC (42" only) code requirements
- Boxed sections include top and bottom rails, mounting brackets and hardware, infill* and the installation guide

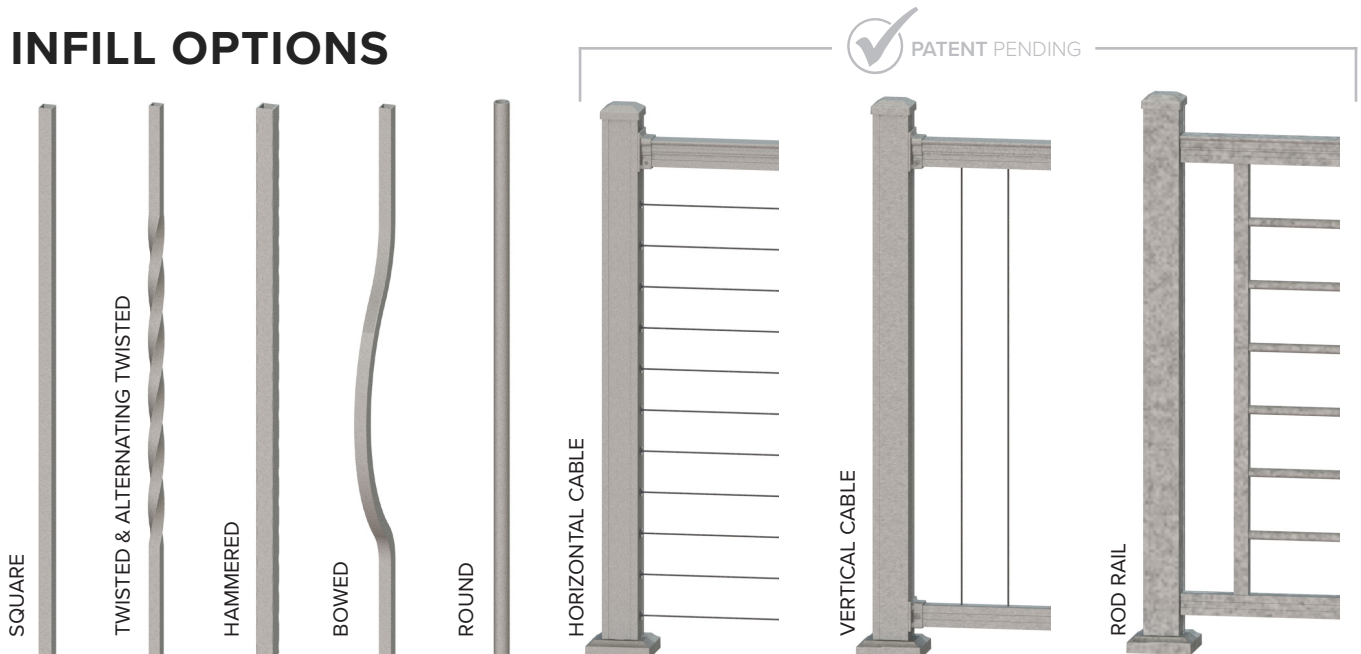
*Except Horizontal Cable



STANDARD COLORS



INFILL OPTIONS



OUTLOOK SERIES

OPEN YOUR SPACE WITH STYLE

The slim-profile Outlook railing works in small or large spaces thanks to its sleek, go-anywhere design and unobtrusive footprint. Outlook's clean lines help define and open a space, providing both security and elegance to outdoor living.



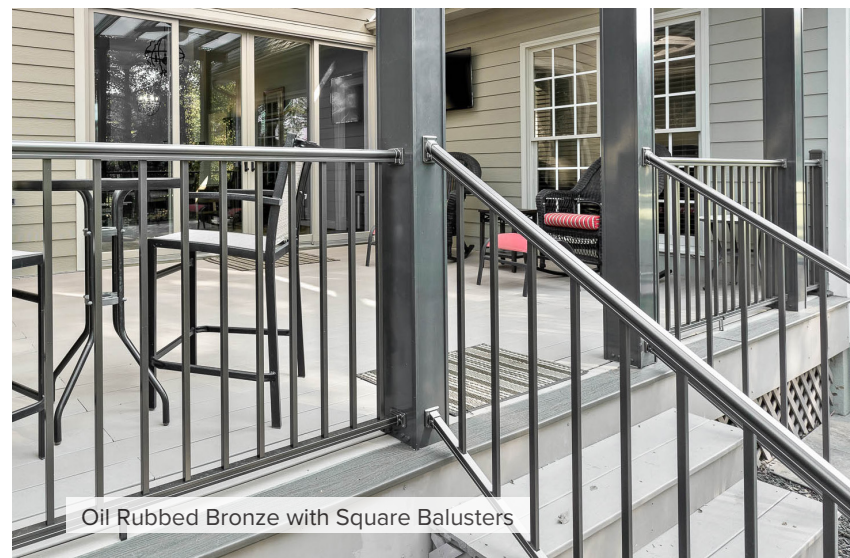




Matte Black with Square Balusters



Matte White with Square Balusters



Oil Rubbed Bronze with Square Balusters

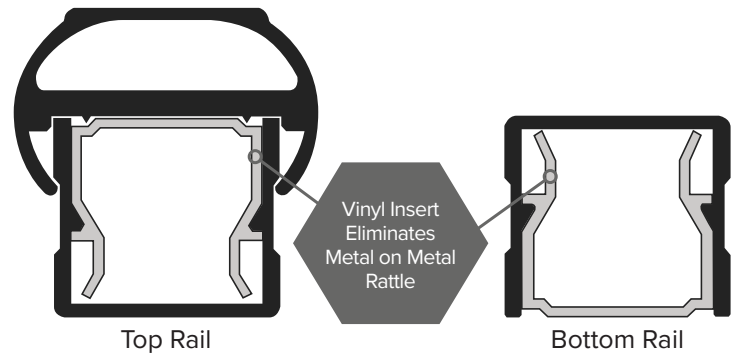


Matte Black with Square Balusters

OUTLOOK SERIES

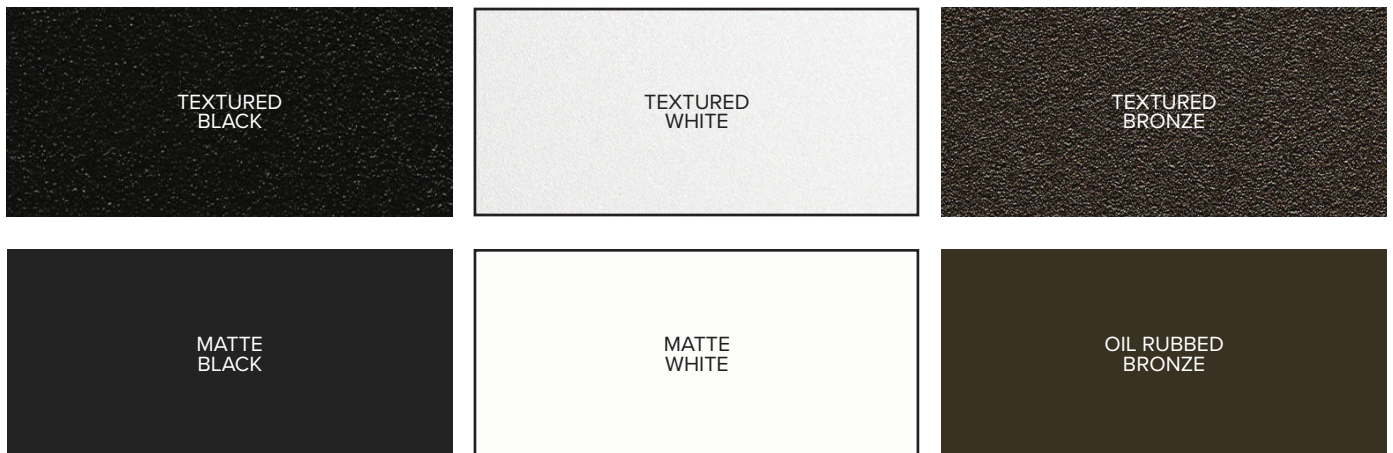
PRODUCT DETAILS

- Level rail lengths come in 5', 6', 7' or 8' and stair rail lengths come in 4', 5' or 6'
- Available in 36" or 42" heights
- Meets IRC and IBC (42" only) code requirements
- Boxed sections include top and bottom rails, mounting brackets and hardware, infill and the installation guide

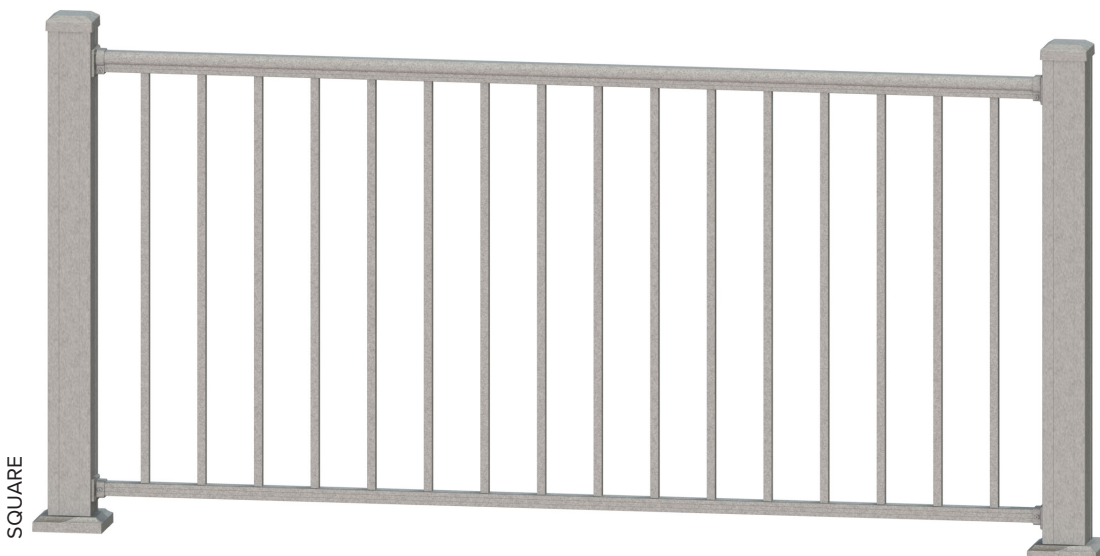


*Except Horizontal Cable

STANDARD COLORS



INFILL OPTION



DISCOVERY SERIES —————

DISCOVER SIMPLICITY

Keylink Discovery Series railing brings efficient installation and a modern design to both contractors and homeowners. Designed with a clean rectangle profile and a 5/8" square baluster, Keylink Discovery allows contractors to assemble railing and balusters quickly and set the entire section onto the preinstalled brackets.







Textured Black with Square Balusters

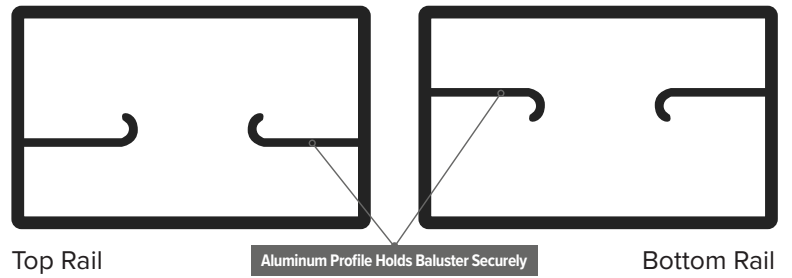


Textured Black with Square Balusters

DISCOVERY SERIES

PRODUCT DETAILS

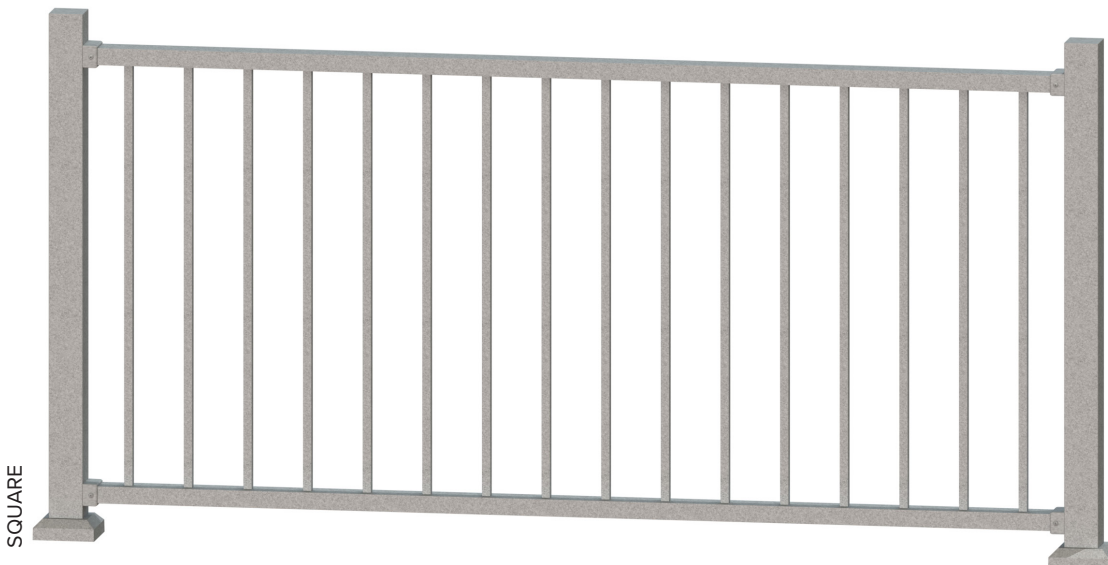
- Fast Installation
- Railing Length Options: 6', or 8'
- Railing Height Option: 36"
- Textured Black Only
- Square Balusters are $\frac{5}{8}$ "
- Boxed sections include top and bottom rails, infill and the installation guide



STANDARD COLORS



INFILL OPTION



POWDER COATING PROCESS

Keylink powder coats all of our aluminum at our plant, using a multi-step process to ensure a long-lasting, high-quality finish.

- 1. Hanging.** Parts are hung on hooks designed to be the right size and shape for optimal coating.
- 2. Washing.** In this five-step wash, all organic and non-organic material is removed from the aluminum so coating can adhere to the material.
- 3. Drying.** Complete oven drying removes any water droplets that could prevent a quality coat.
- 4. Coating.** Coating is applied via spray guns. The angle and degree of the guns' applicator tips changes depending on the size and shape of the profile being coated.
- 5. Curing.** The pieces go back into the oven so the coating "bakes" on for colorfastness and weather protection.
- 6. Checking.** Quality technicians check to make sure each piece is coated to Keylink quality standards.



Keylink has received PCI-4000 Certification from the Powder Coating Institute, which is third-party confirmation that our process and coating meet the highest standards.

POWDER COATING STANDARDS

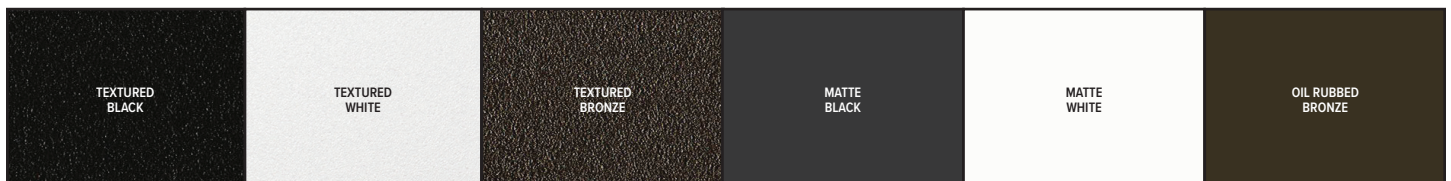
AAMA 2604 Standard Coating

Used on all Keylink products unless an upgrade is ordered. This level of protection balances effective coating with affordability, making it an excellent choice for outdoor aluminum.

AAMA 2605 Coating with Coastal Upgrade

Strongly recommended for installations near bodies of water, especially saltwater. This upgrade includes a primer over all the aluminum before it's finished with AAMA 2605 standard coating. The coastal upgrade protects the aluminum from galvanic corrosion. Please note that a slight difference in colors is expected between AAMA 2604 and AAMA 2605 finishes. Please contact your Territory Manager for 2605 color swatches.

KEYLINK'S STANDARD COLOR OPTIONS



KEYLINK'S SPECIAL ORDER COLOR OPTIONS*

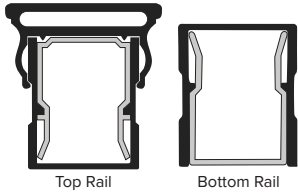


KEYLINK'S COASTAL UPGRADE COLOR OPTIONS*

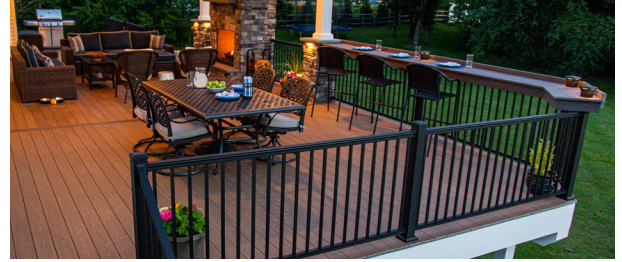


SERIES COMPARISON

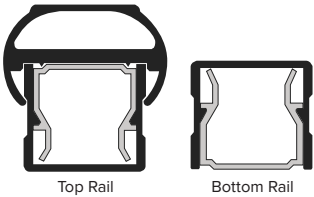
AMERICAN SERIES



- 1 $\frac{3}{4}$ " W x 1 $\frac{7}{8}$ " H Flat Top Rail
- Railing Height Options: 36" - 42"
- Railing Length Options: 6' - 8'
- Square Balusters are $\frac{3}{4}$ "



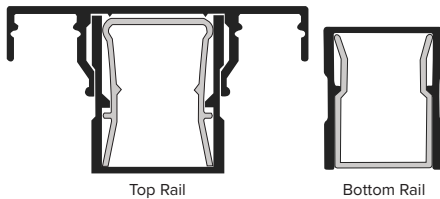
OUTLOOK SERIES



- 1 $\frac{1}{2}$ " Flat Top Rail
- Railing Height Options: 36" - 42"
- Railing Length Options: 4' (42") - 5' - 6' - 7' - 8'
- Square Balusters are $\frac{5}{8}$ "



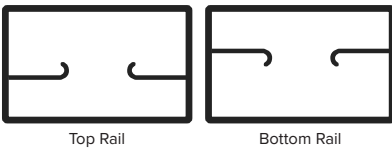
CHESAPEAKE SERIES



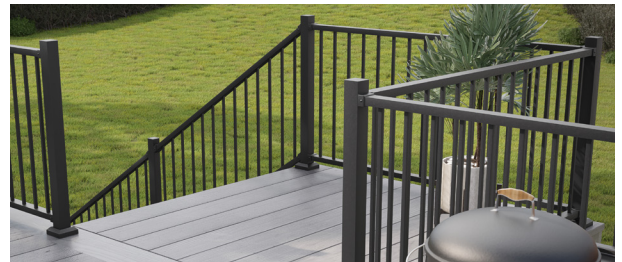
- Top Deckboard Not Included
- Railing Height Options: 36" - 42"
- Railing Length Options: 6' - 8'
- Square Balusters are $\frac{3}{4}$ "



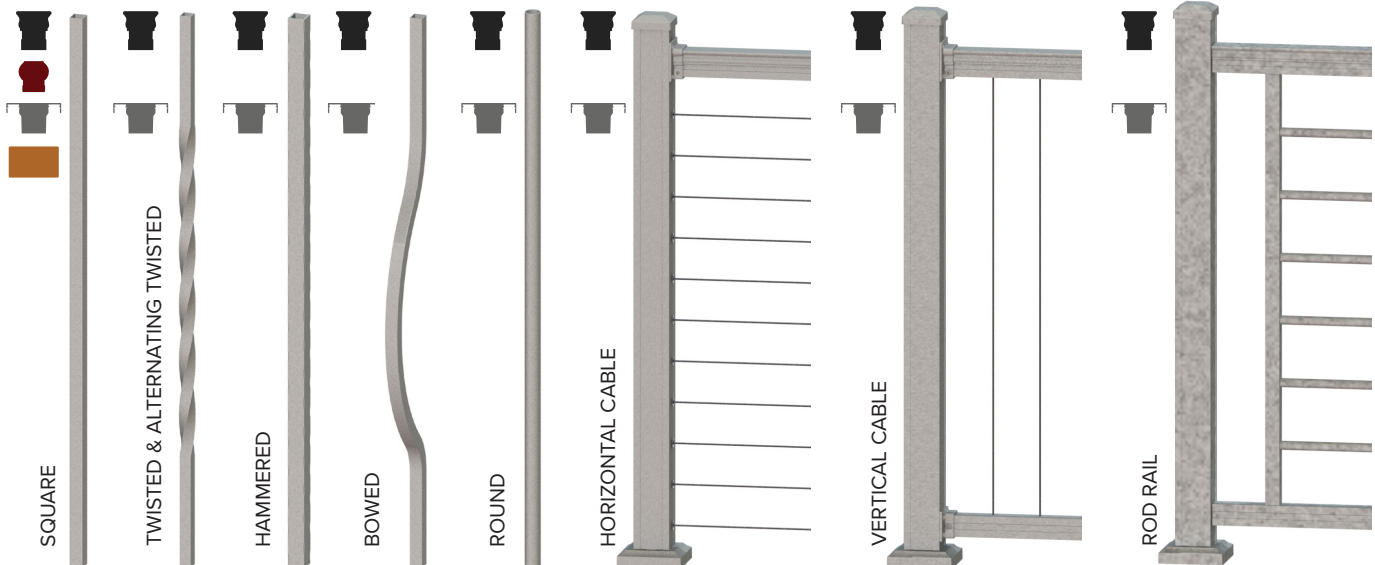
DISCOVERY SERIES



- Fast Installation
- Railing Height Options: 36"
- Railing Length Options: 6' - 8'
- Textured Black Only
- Square Balusters are $\frac{5}{8}$ "



INFILL OPTIONS



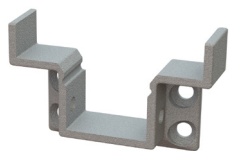
WHAT'S YOUR ANGLE?

Key-Link's brackets can help take your railing in a new direction!

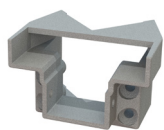
These powder coated, self-centering brackets can handle installation angles from 0-52° horizontally and 0-52° vertically, so no matter your installation challenge, Key-Link has a bracket.



CHESAPEAKE SERIES BRACKETS & WEDGES



Level Bracket



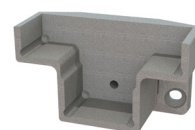
45° Bracket



Horizontal Swivel
0°-36°



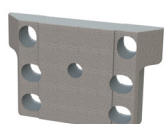
Stair Bracket
32°-36°



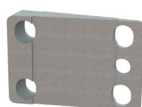
Vertical Swivel
0°-37.5°



Wedge
22.5°

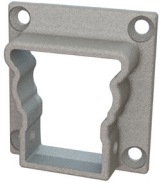


Reducer Block
for 2.5" post



10° Horizontal
Swivel Wedge

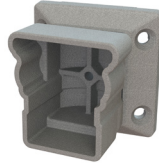
AMERICAN SERIES BRACKETS & WEDGES



Level Bracket



45° Bracket



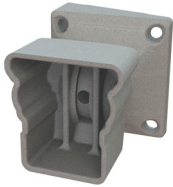
Horizontal Swivel
0°-40°



Stair 32°-36°



Vertical Swivel
0°-30°



Universal Swivel
0°-52°
(any direction)



Universal Stair
0°-50°

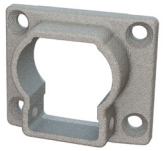


5°-7° Horizontal or
Vertical Wedge

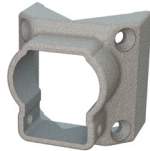


6" or 8" Column
Wedge

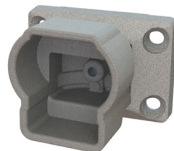
OUTLOOK SERIES BRACKETS & WEDGES



Level Bracket



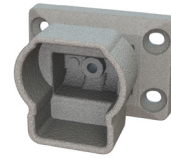
45° Bracket



Horizontal Swivel
0°-40°



Stair 32°-36°



Vertical Swivel
0°-30°

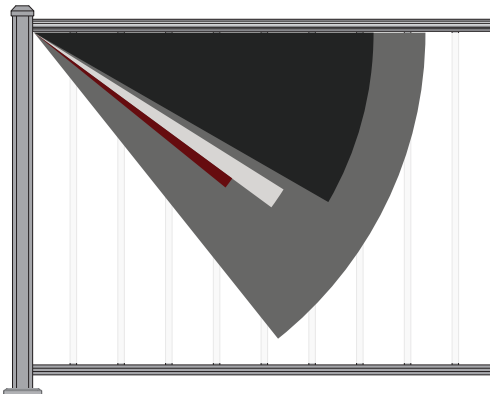


Stair Wedge 5°

VERTICAL BRACKET ANGLE GUIDE

Find the vertical angle you need, then note the appropriate bracket.

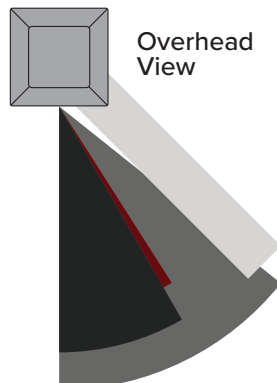
- Universal Swivel = 0°-52°
- Vertical Swivel = 0°-30°
- Stair = 32°-36°
- Vertical Wedge = 5°-7°



HORIZONTAL BRACKET ANGLE GUIDE

Find the horizontal angle you need, then note the appropriate bracket.

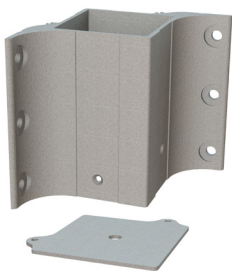
- Universal Swivel = 0°-52°
- Horizontal Swivel = 0°-40°
- 45° Bracket = 45°
- Horizontal Wedge = 5°-7°



ACCESSORIES

FASCIA MOUNT BRACKETS

Key-Link's solidly crafted fascia mounting brackets let you move railing posts to the fascia for additional deck space and a unique aesthetic. For each linear foot of railing, fascia mounting gives you an extra 1/2 square foot of space compared to traditional surface mounting. Available for both 2 1/2" and 3 1/4" posts



Inside Corner Post Bracket



Line Post Bracket



Outside Corner Post Bracket



STANDARD COLORS



Special order colors also available.

HORIZONTAL CABLE FITTINGS

Cable fittings allow you to turn wood, aluminum, composite, or masonry posts into vehicles for beautiful on-trend horizontal cable railing.

These slimmed down fittings have full tensioning capacity for safety and security and require only a few standard tools for installation.

For use on new construction or retrofit projects.

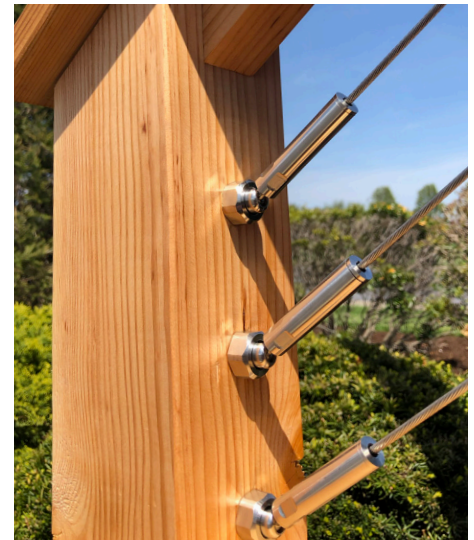
Level Cable Connector



Stair Cable Connector



Cable Through Sleeve

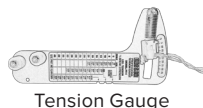


Stainless Steel Cable

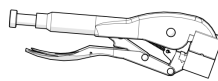
Our Cable is Made From Grade 316L Stainless Steel & Features a 1/8" Diameter w/1 x19 Strand Construction.



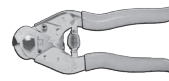
Installation Tools



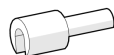
Tension Gauge



Cable Grip Pliers



Cable Cutter



Cable Release Key



Cable Needle

Cleaner and Protectant



Stainless Steel & Chrome Cleaner



CLEANING GUIDE



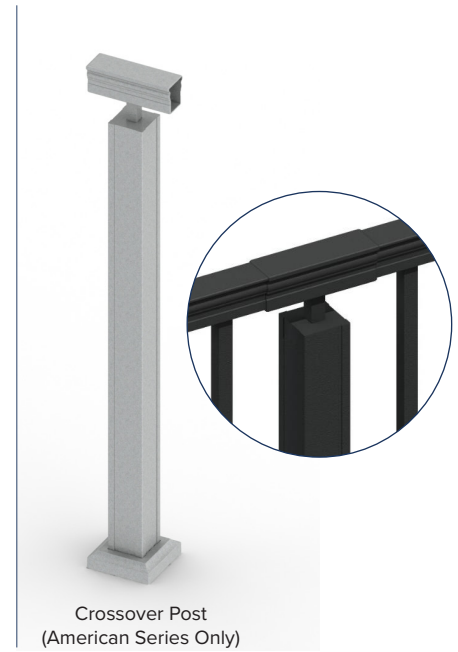
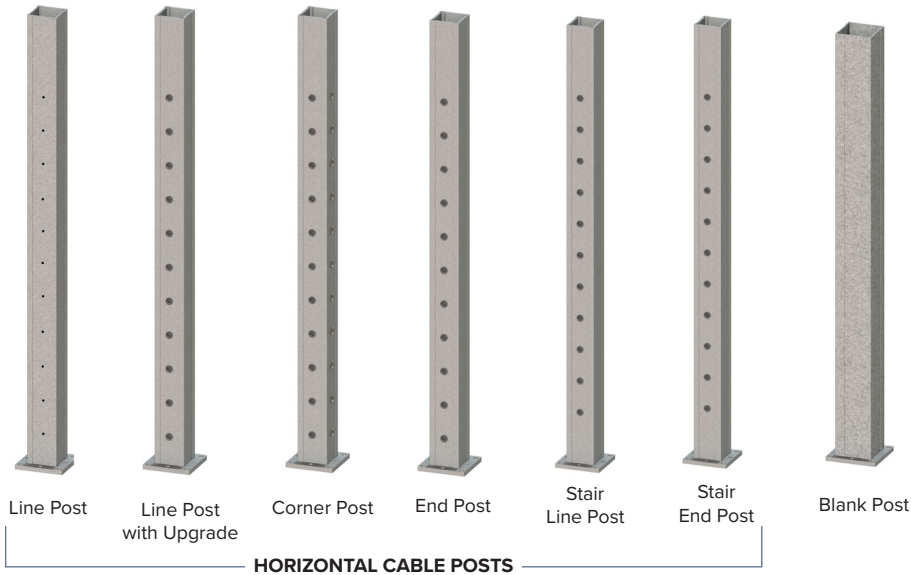
Stainless Steel Cleaner & Protectant



POSTS

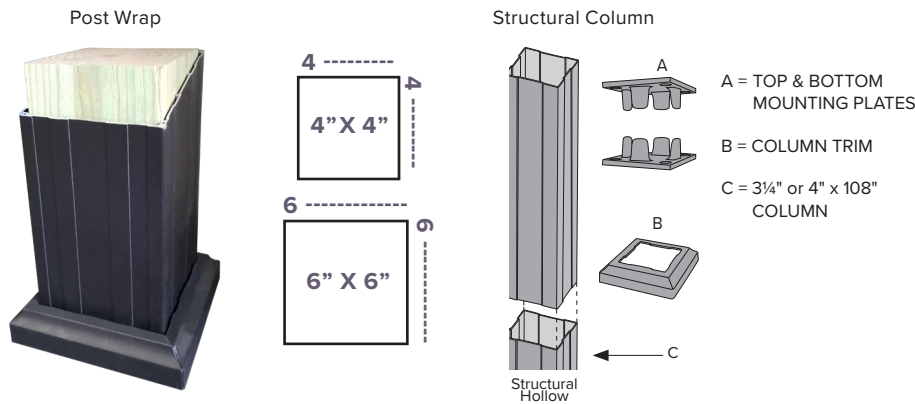
Key-Link's powder coated posts come with a leveling plate for ease of installation even on a non-level surface. Each post is grooved to receive our self-centering brackets.

Available in 2½" and 3¼" posts

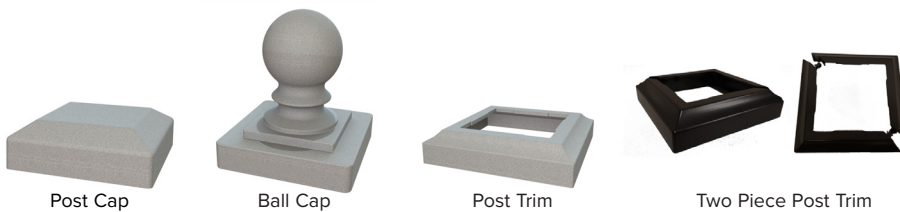


POST WRAP & STRUCTURAL COLUMNS

Complement your railing project and support your porch roof with handsome powder-coated post wrap or structural columns. All items are color matched to our railing lines, and unlike wood, these posts will not crack, rot, or ever need to be painted.



POST CAPS & TRIM

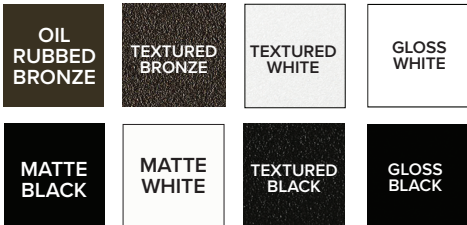


ADA ALUMINUM HANDRAIL

ADA Aluminum Handrail adds safety and security without compromising on looks! This handrail is designed to coordinate perfectly with Key-Link's existing railing for a beautiful, functional, and safe railing system.



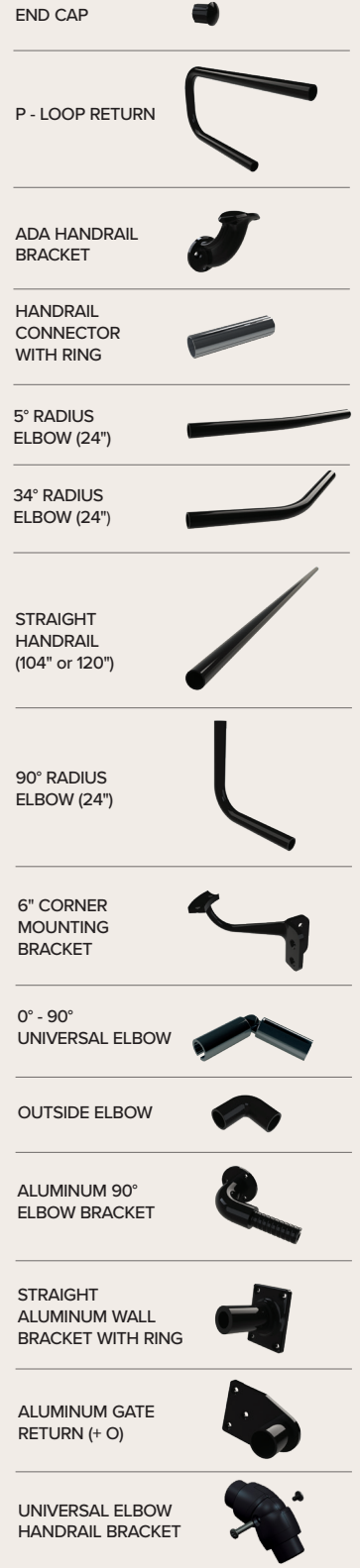
STANDARD COLORS



SPECIAL ORDER COLORS



COASTAL UPGRADE COLORS

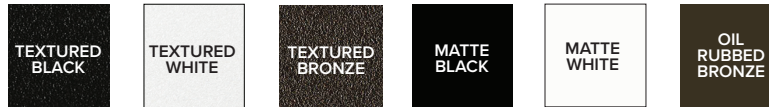


BRING YOUR SPACE TO LIGHT

Key-Link's electrical engineers and experts have refined our lights for a long-lasting and easy-to-use system that brings exceptional outdoor lighting to your deck or porch.

STANDARD COLORS

Powder-coated die-cast aluminum



SPECIAL ORDER COLOR OPTIONS

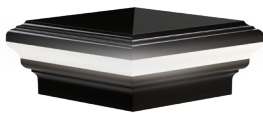


POST & ACCENT LIGHTS

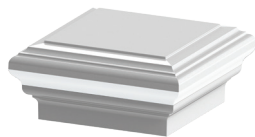
Sizes available for 2½", 3¼" and 4" Posts

POST CAP LIGHTS

3000k LED



PYRAMID



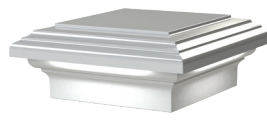
DECORATIVE

POST CAP DOWNLIGHTS

3000k LED



PYRAMID



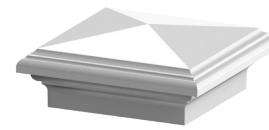
DECORATIVE

POST & STAIR ACCENT LIGHT

3000k LED



POST CAPS (NO LIGHTS)



PYRAMID



DECORATIVE

UNDER RAIL LIGHTING



Only available for Chesapeake Series

LIGHTING ACCESSORIES

LIGHTING CONTROL HUB & POWER SUPPLY



- Timer lets you choose 1-9 hours of light, or dusk-to-dawn
- Dimmer mode with 9 brightness levels
- Adjustable photocell sensor to control for ambient light
- **Walk Away** feature for safe exiting before lights go out
- Aluminum housing to match railing
- Power Supply available in 60w or 120w
- Expandable Power Splitter available for both 60w or 120w power supply

POST LIGHT WIRE KIT

KIT INCLUDES:

- Staples
- 2-way splitter
- 5' and 9' wire extensions

WIRE EXTENSIONS, WIRE SPLITTERS

WIRE EXTENSIONS:

- 2', 5', 9' Lengths Available

WIRE SPLITTER KITS:

- 2-Way Kit: Includes (1) 8" input cable to (2) 8" output cables
- 3-Way Kit: Includes (1) 8" input cable to (3) 10" output cables

2" POST ADAPTER

- Made to fit fence posts
- Fits 2" Posts
- Uses 2½" Cap for 2" Post





KEYLINK



[keylinkonline.com](https://www.keylinkonline.com)

110 Peters Road, New Holland, PA 17557

Toll Free: 888-704-7130

Email: info@keylinkonline.com



© Keylink | 240522