



CABLE RAILING



OPEN UP YOUR VIEW



EXCEPTIONAL STYLE, OUTSTANDING PERFORMANCE.

If you're dreaming of **beautiful, stress-free outdoor living** spaces, our low maintenance aluminum railing, designed to provide long-lasting attractiveness and safety, is one way to make that outdoor dream a reality. With its wide variety of colors and styles, Key-Link's aluminum railing is appreciated by homeowners and builders alike. All of Key-Link's railing is engineered to our exacting standards and fabricated and tested in the **USA**.



WHAT IS KEY-LINK QUALITY?

- AAMA 2604 standard powder coating on railing and accessories to promote weatherability, with AAMA 2605 standard available for additional protection
- IBC or IRC code compliance for peace of mind and safety
- High-quality aluminum with vinyl inserts to hold balusters snugly and prevent rattling
- Limited lifetime warranty and 5-year prorated labor warranty



Key Link has been **PCI certified** through the Powder Coating Institute. Powder coating is the solution to keeping aluminum railing and fencing from fading and helping it to retain its color.



MANUFACTURED IN THE USA
Key-Link's products are proudly designed and manufactured in the **USA** to ensure a quality fit and finish.

A MODERN VIEW

HORIZONTAL CABLE

Sleek and modern horizontal cable continues to be one of the most popular choices on the market. Contractors appreciate Key-Link's system for its ease of installation; homeowners love the look and maintaining their unobstructed views.





Crossover
Posts Now Available

a



HORIZONTAL CABLE | CLEAN & OPEN STYLE

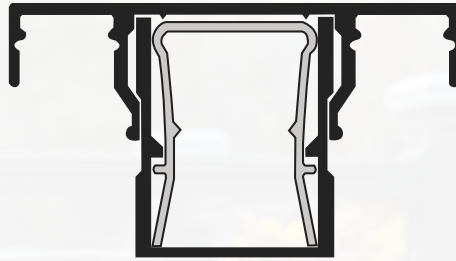


PATENT PENDING

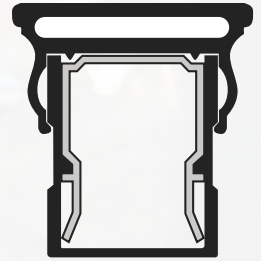
- Available in **36" & 42" h** x **6' & 8'** sections
- **Pre-fitted** line, corner, and end posts.
- Requires only **single post** at corners
- Comes as a kit with **center baluster** and **top rail** (cable rolls available separately)



RAILING STYLES

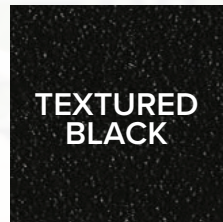


**CHESAPEAKE
SERIES**

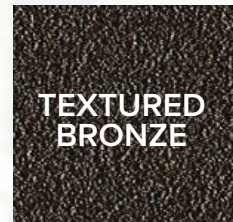


**AMERICAN
SERIES**

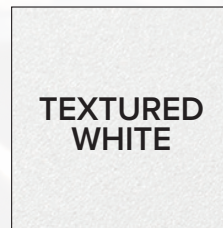
STANDARD COLORS



**TEXTURED
BLACK**



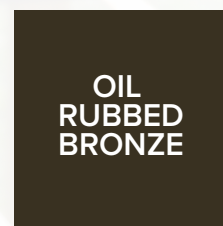
**TEXTURED
BRONZE**



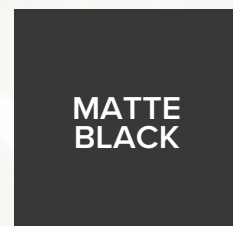
**TEXTURED
WHITE**



**MATTE
WHITE**



**OIL
RUBBED
BRONZE**



**MATTE
BLACK**





GIVE YOUR VIEW AN UPGRADE

Cable fittings allow you to turn wood, aluminum, composite, or masonry posts into vehicles for beautiful on-trend horizontal cable railing.

These slimmed down fittings have full tensioning capacity for safety and security and require only a few standard tools for installation.

EXTERNAL CABLE FITTINGS

Level Cable Connector



Stair Cable Connector



Cable Through Sleeve



STAINLESS
STEEL

TAKE A FRESH LOOK

VERTICAL CABLE

For those who want cable with a different spin, Key-Link's vertical cable system is the premiere choice. The cable comes pre-installed from our plant for installers' convenience, and the addition of stainless steel support balusters give it a seamless contemporary style that homeowners love.







VERTICAL CABLE | EXCEPTIONAL LOOKS

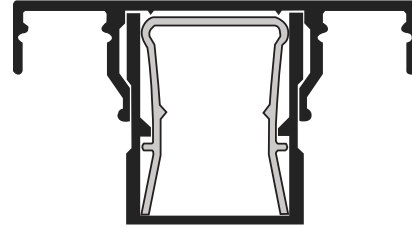


PATENT PENDING

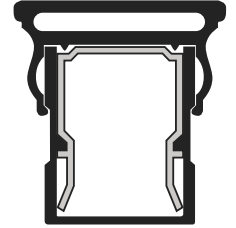
- Available in **36"** & **42"** h x **6'** & **8'** sections
- No drilling required for **standard installations**
- Cable comes **pre-installed**
- Conveniently boxed as a section



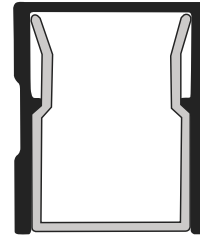
RAILING STYLES



**CHESAPEAKE
SERIES**



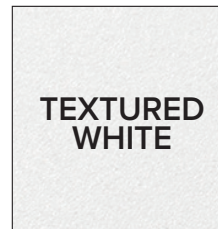
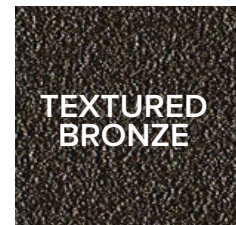
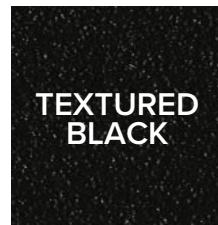
**AMERICAN
SERIES**



**SAME
BOTTOM
RAIL**

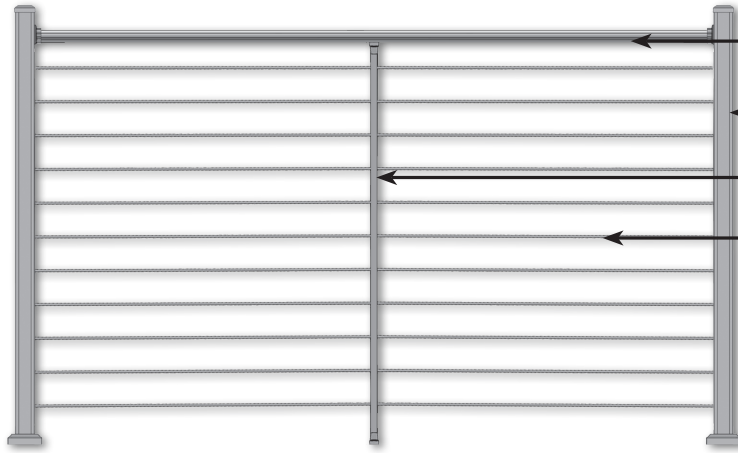


STANDARD COLORS



HORIZONTAL CABLE SYSTEM

Posts and support balusters come pre-drilled and pre-fitted for an even faster installation.

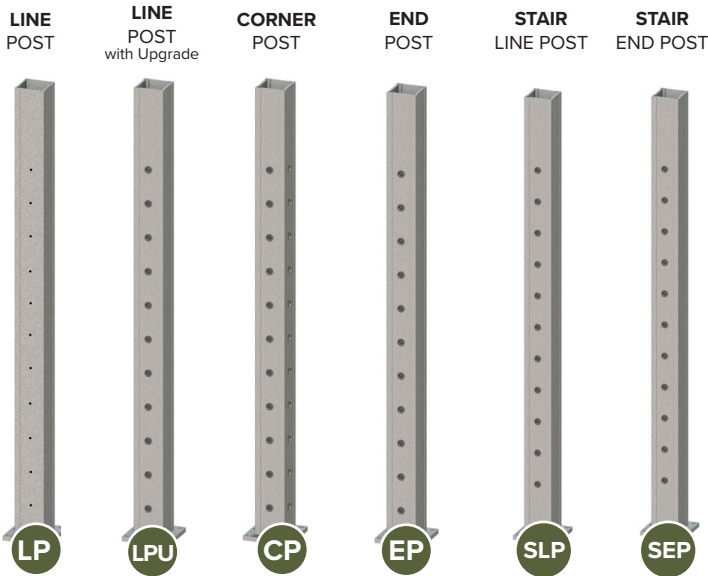


- A. American Series Top Rail
- B. Posts
- C. Center Baluster(s) w/Mount
- D. S.S. Cable

36" (In-stock) requires 11 cable strands
 42" (Special Order) requires 13 cable strands

Boxed Section Includes: Top rail, intermediate baluster(s), baluster mounts, top rail mounting brackets with screws, and installation guide. Cable, posts, caps, and trim sold separately.

AVAILABLE POST OPTIONS



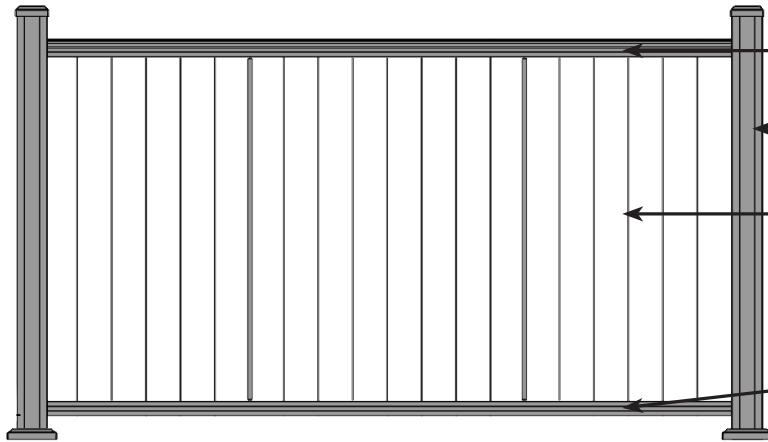
Stainless Steel Cable

Our Cable is Made From Grade 316L Stainless Steel & Features a 1/8" Diameter w/1 x 19 Strand Construction.



VERTICAL CABLE SYSTEM

Cable comes pre-installed! Install the section, tighten the cable, and you're done.



A. American or Chesapeake Series Top Rail

B. Posts

C. Vertical Cable Infill

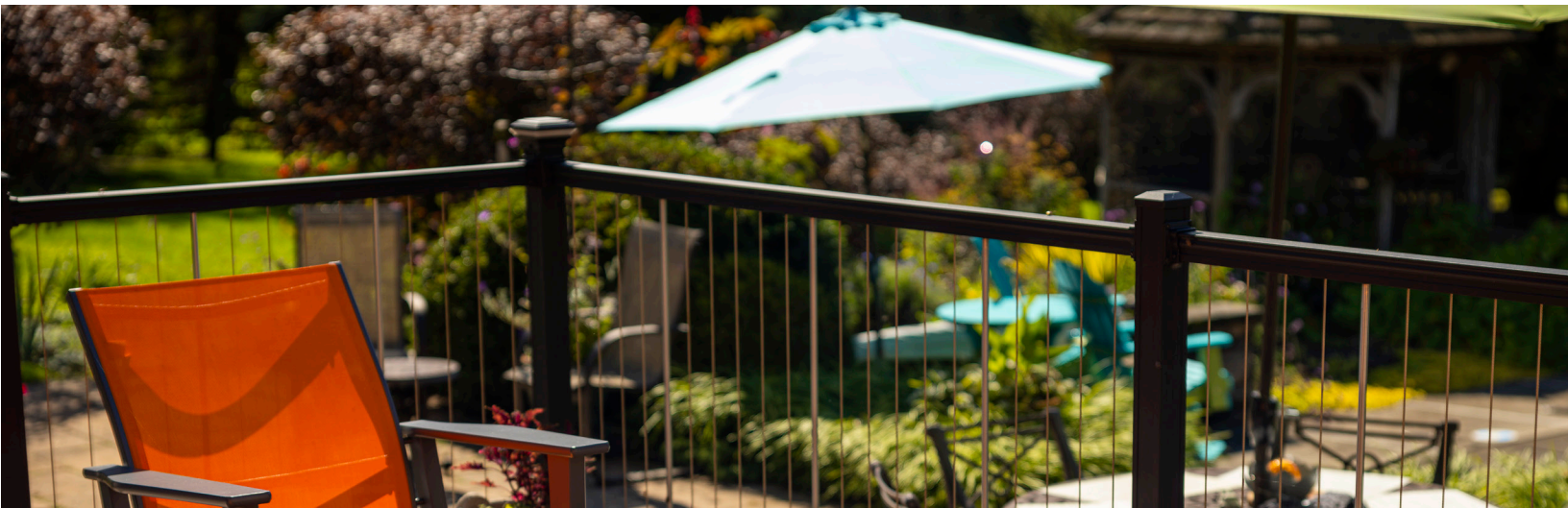
Our Cable is Made From Grade 316L Stainless Steel & Features a 1/8" Diameter w/1 x19 Strand Construction. Fittings are Comprised of 316L Series Stainless Steel.

D. American or Chesapeake Series Bottom Rail

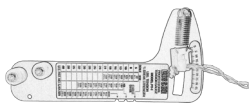
Boxed Section Includes: Top & bottom rails, balusters, mounting brackets with screws, and installation guide. 8' level sections include a section support. Posts, caps, and trim sold separately.



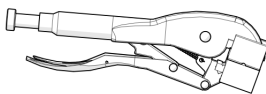
Section Support



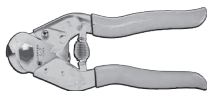
INSTALLATION TOOLS



Tension Gauge

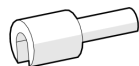


Cable Grip Pliers



Cable Cutter

HORIZONTAL CABLE ONLY



Cable Release Key



Cable Needle

Cleaner & Protectant*

*For preventative care and cleaning. Sold as a kit. See the cable railing cleaning guidelines on our website for more information.



Stainless Steel & Chrome Cleaner



Stainless Steel Cleaner & Protectant



FASCIA MOUNT BRACKETS

Available for both 2½" and 3¼" posts



Inside Corner Post Bracket

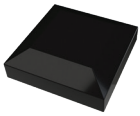


Line Post Bracket



Outside Corner Post Bracket

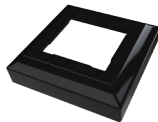
POST CAPS & TRIM



Post Cap



Ball Cap



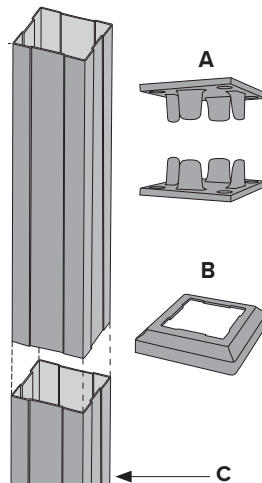
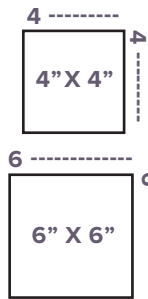
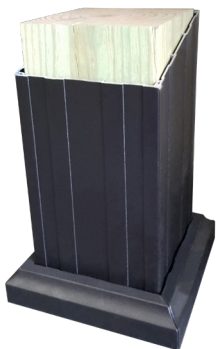
Post Trim



Two Piece Post Trim

POST WRAP AND STRUCTURAL COLUMNS

Available in 6 sizes: 4" x 108" • 6" x 108" • 4" x 120" • 6" x 120" • 4" x 144" • 6" x 144"



A = 3¼" Top & Bottom Mounting Plates
B = 3¼" Column Trim
C = 3¼" x 108" Column

3 1/4" & 4" Structural Hollow Column



Line Structural Column Drilled

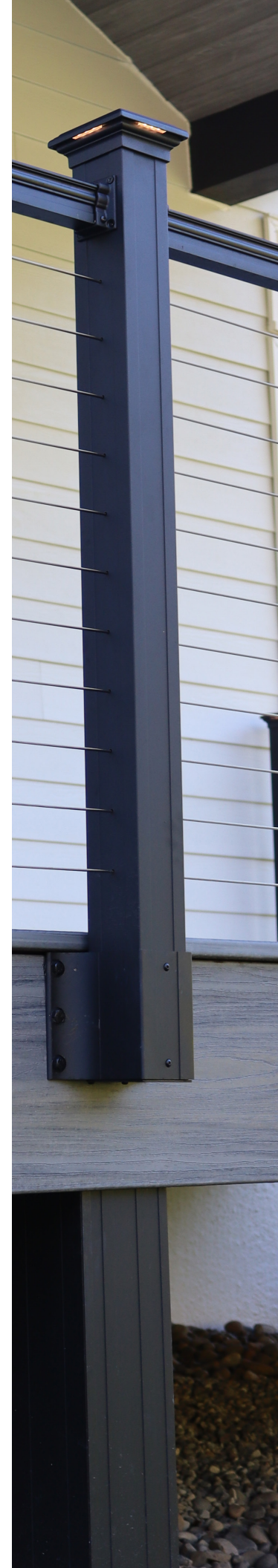
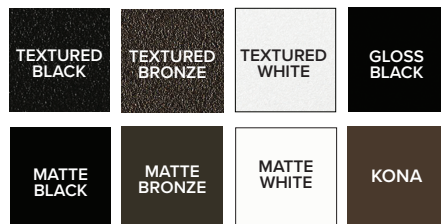


End Structural Column with Pre-Installed Fittings



Corner Structural Column with Pre-Installed Fittings

COLORS

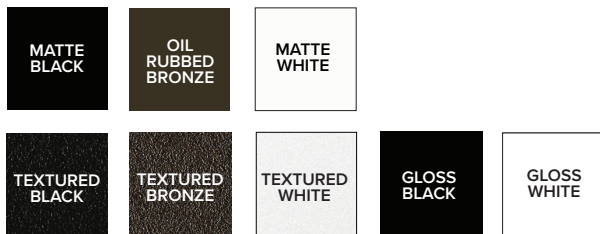


ADA ALUMINUM HANDRAIL

ADA Aluminum Handrail adds safety and security without compromising on looks! This handrail is designed to coordinate perfectly with Key-Link's existing railing for a beautiful, functional, and safe railing system.



STANDARD COLORS



SPECIAL ORDER COLORS



END CAP	
P - LOOP RETURN	
ADA HANDRAIL BRACKET	
HANDRAIL CONNECTOR WITH RING	
5° RADIUS ELBOW (24")	
34° RADIUS ELBOW (24")	
STRAIGHT HANDRAIL (104")	
90° RADIUS ELBOW (24")	
6" CORNER MOUNTING BRACKET	
0° - 90° UNIVERSAL ELBOW	
OUTSIDE ELBOW	
ALUMINUM 90° ELBOW BRACKET	
STRAIGHT ALUMINUM WALL BRACKET WITH RING	
ALUMINUM GATE RETURN (+ O)	
UNIVERSAL ELBOW HANDRAIL BRACKET	

BRING YOUR SPACE TO LIGHT

Create stunning focal points and add atmosphere and safety to your outdoor living space with lighting. Key-Link's lighting is designed to pair with railing for a beautiful, seamless look. Post cap and accent lights are made from diecast aluminum and powder-coated with the same coating and color, which means both posts and lights will retain their color in the same way.

Key-Link's electrical engineers and experts have refined our lights for a long-lasting and easy-to-use system that brings exceptional outdoor lighting to your deck or porch.



STANDARD COLORS

Powder-coated die-cast aluminum



SPECIAL ORDER COLOR OPTIONS

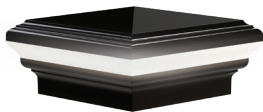


POST & ACCENT LIGHTS

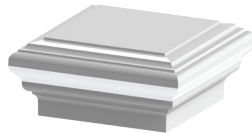
Sizes available for 2½", 3¼" and 4" Posts

POST CAP LIGHTS

3000k LED



PYRAMID



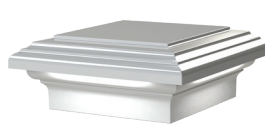
DECORATIVE

POST CAP DOWNLIGHTS

3000k LED



PYRAMID



DECORATIVE

POST & STAIR ACCENT LIGHT

3000k LED



POST CAPS (NO LIGHTS)



PYRAMID



DECORATIVE

UNDER RAIL LIGHTING



Only available for Chesapeake Series

LIGHTING ACCESSORIES

LIGHTING CONTROL HUB & POWER SUPPLY



- Timer lets you choose 1-9 hours of light, or dusk-to-dawn
- Dimmer mode with 9 brightness levels
- Adjustable photocell sensor to control for ambient light
- **Walk Away** feature for safe exiting before lights go out
- Aluminum housing to match railing
- Power Supply available in 60w or Power Station

POST LIGHT WIRE KIT

KIT INCLUDES:

- Staples
- 2-way splitter
- 5' and 9' wire extensions

WIRE EXTENSIONS, WIRE SPLITTERS

WIRE EXTENSIONS:

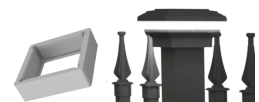
- 2', 5', 9' Lengths Available

WIRE SPLITTER KITS:

- 2-Way Kit: Includes (1) 8" input cable to (2) 8" output cables
- 3-Way Kit: Includes (1) 8" input cable to (3) 10" output cables

2" POST ADAPTER

- Made to fit fence posts
- Fits 2" Posts
- Uses 2½" Cap for 2" Post





KEYLINK



keylinkonline.com

110 Peters Road, New Holland, PA 17557

Toll Free: 888-704-7130

Email: info@keylinkonline.com



© Keylink | 240522