



## Overview

PalmSHIELD Elite is a revolutionary architectural screening system featuring a clean 3" reveal, two-sided finish, and innovative tubular columns for faster installation. This guide covers the Post-Post-Post-Panel-Panel installation method.

# PALMSHIELD ELITE

## Post Post Post Panel Panel Installation Instructions



### System Components

#### 3 Panels



#### 4 Posts



#### Anchor Bolts

(not provided - must be sourced separately)



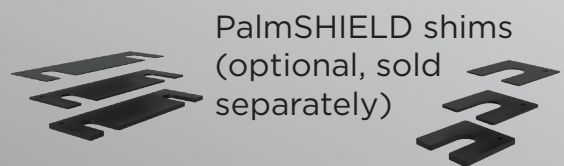
#### Flanges



### Required Tools & Equipment



Level



# PALMSHIELD ELITE

## Post Post Post Panel Panel Installation Instructions



### IMPORTANT NOTES

#### Pre-Installation

1. Review custom fabrication drawings included with your order
2. Verify all components are present and undamaged

#### Safety Requirements

Minimum **2** installers required

Proper protective gear must be worn at all times

- **Never** drill through the post holes directly, as this can chip the powder-coated finish and damage the product.

- **Anchor bolts** are not specified or provided by **PalmSHIELD**

- **Custom shims** are available from **PalmSHIELD** for leveling assistance

- **Two-person installation** is mandatory for safety and proper alignment

- **Follow all** local building codes and regulations

#### Step 1: Mark Anchor Holes



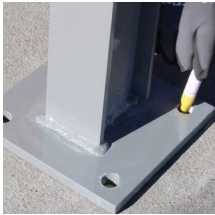
1. Use tape measure to determine placement of and distance between posts



2. Position the first post at the designated installation point

# PALMSHIELD ELITE

## Post Post Post Panel Panel Installation Instructions



3. Use a marker to mark the four anchor bolt hole locations through the post base



4. Remove the post to reveal the markings

### Step 2: Drill Anchor Holes



1. Set up hammer drill with appropriate bit



2. Drill four holes at the marked locations

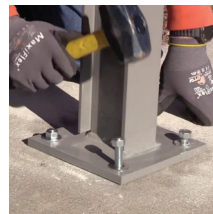


3. Use compressed air to clear debris from holes

### Step 3: Install First Post



1. Position post over the drilled holes



2. Install anchor bolts with nuts positioned at the top



3. Use mallet to seat anchors properly



4. Do not tighten bolts yet

# PALMSHIELD ELITE

## Post Post Post Panel Panel Installation Instructions



### Step 4: Level the Post



1. Check post level using a level tool



2. If adjustment needed, slide **PalmSHIELD** shims under post edges



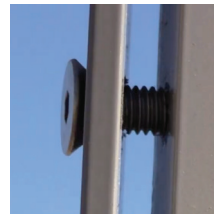
3. Once post is perfectly level, tighten all four anchor bolts



4. Repeat the process until all 4 posts are installed

### Phase 2: Panel Installation

#### Step 1: Prepare Posts



1. Loosen all 7 screws on the flange of the first post



2. Remove screws and flange completely



3. On remaining posts, remove all the screws and flanges

#### Step 2: Install Support Blocks & Panels (Optional)



1. Place small support blocks to support first panel

# PALMSHIELD ELITE

## Post Post Post Panel Panel Installation Instructions



2. Tip and place first panel between first and second post



3. Reattach flange to first post keeping flange loose

### Step 3: Install Remaining Panels



1. Repeat the process of installing all remaining panels



2. Install the vertical compression profiles to each end of the post panel run and tighten profiles

### Step 4: Lift Panels



1. Lift panels until post and top of panel are level



2. Tighten screws on flanges



3. Repeat until all panels are level and set to height

### Step 5: Final Cleanup



1. Wipe down all panels to remove fingerprints and debris



2. Clean up installation area

# PALMSHIELD ELITE

## Post Post Post Panel Panel Installation Instructions



3. Remove any temporary support blocks



### Post-Installation

1. Perform final inspection to ensure all components are secure
2. Take photographs of completed installation
3. Upon completion, send installation photos to your project manager at **PalmSHIELD** to activate warranty