

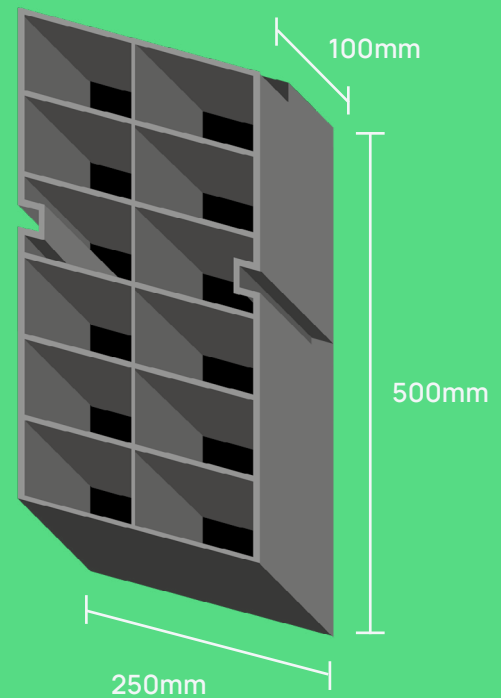
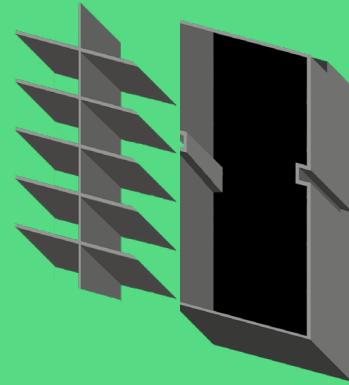
— 2022

ANS Living Wall

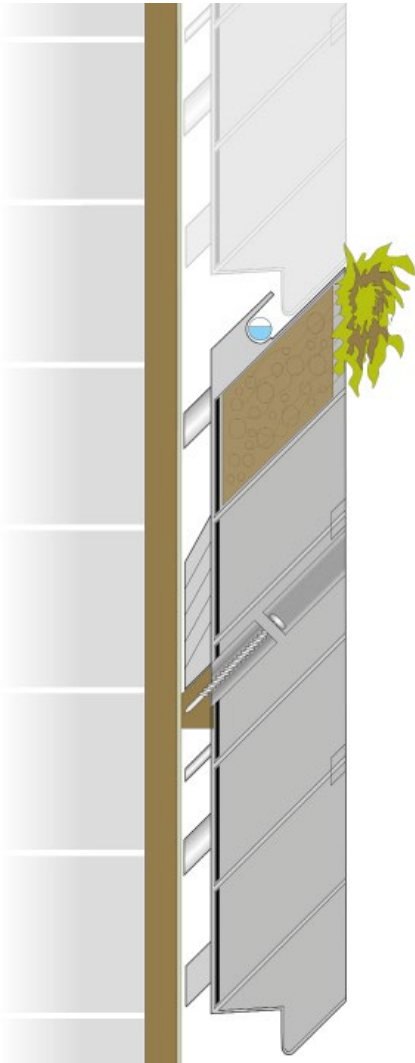
# Installation Guide

# The ANS Living Wall Module

- Manufactured in the UK from 100% recycled material
- Wind resistant to 140mph
- Modules are planted and plants are acclimatised prior to installation
- 72kg per m<sup>2</sup> fully saturated
- In extreme weather the module is designed to expand externally
- 8 modules per m<sup>2</sup>
- No visual exposure of the module on the frontage
- 96 plants per m<sup>2</sup>
- Central section is separate to allow for deeper root movement in the module. This allows for larger plant species to develop.



# The ANS Living Wall Module



# Installation

---

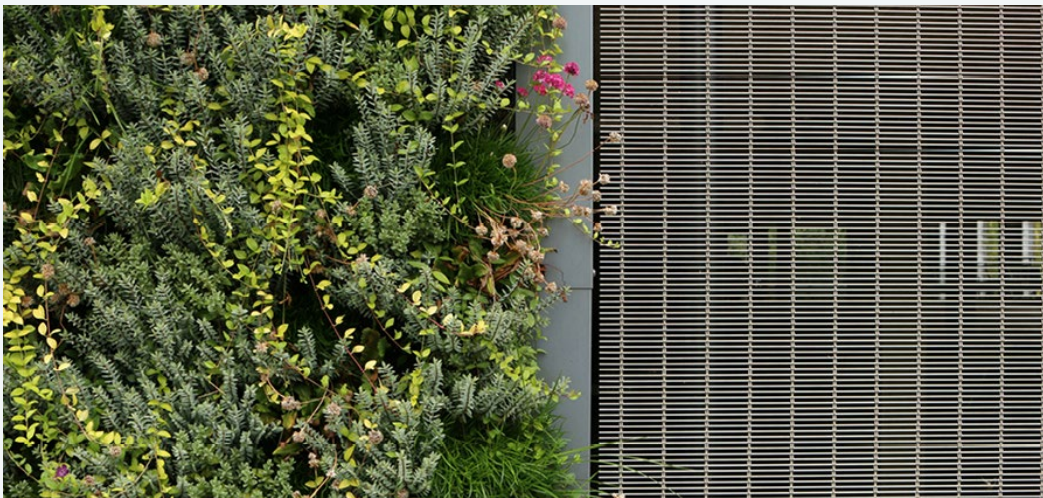
We use multiple build-up systems which enables us to work with most structures and surfaces.

This includes:

- steel frame
- brick
- concrete

Designing and selecting a living wall system early on in the scheme allows for configuration of the right build-up system into the building structure (see image of Granta Park MSCP).

This not only reduces costs from doubling up on facade materials, but also gives the advantage of the opportunity to incorporate sustainable rainscreen cladding with added biodiverse benefits.



## Helpful Tip

Ensure build-up and installation is considered early on in the scheme (early design stages). This can cause substantial cost savings.

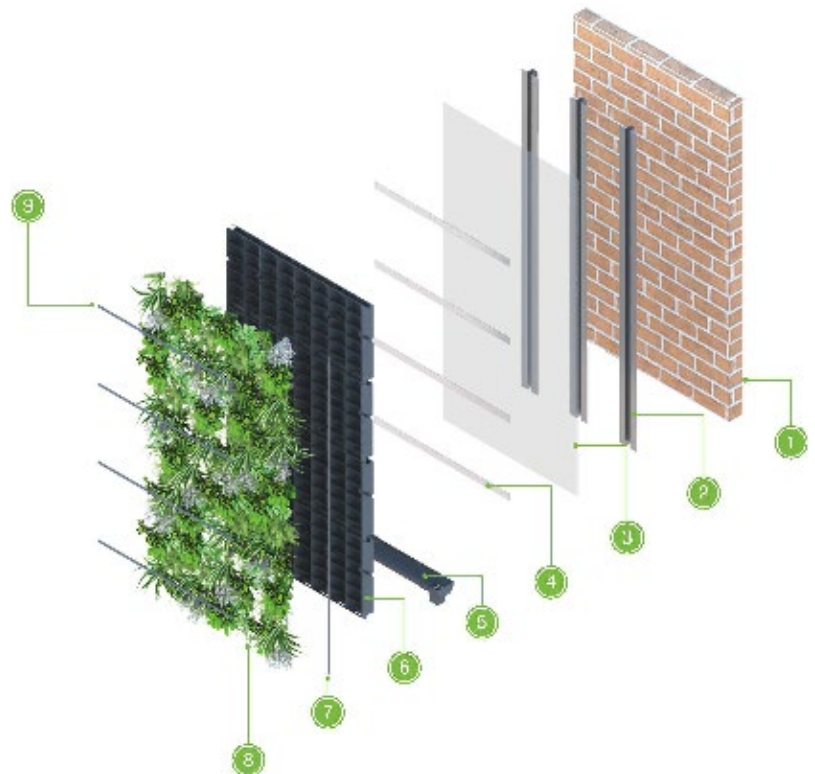
# Installation

---

## Aluminium Tophat Build-up System (Standard)

This build-up can be used to retrofit a living wall onto new brick work and masonry facade. This option is suitable for any application where there is a solid brick or concrete surface to fix back to.

1. Indicative brick or concrete surface
2. Vertical Omega carrier rail
3. Waterproof membrane
4. 48x12mm ANS Fixing Rail
5. Osma Squareline Gutter or client specified
6. ANS Living Wall Module 500x250x100mm
7. 16mm vertical irrigation pipe
8. Planting
9. 16mm inline emitter pressure regulated irrigation pipe



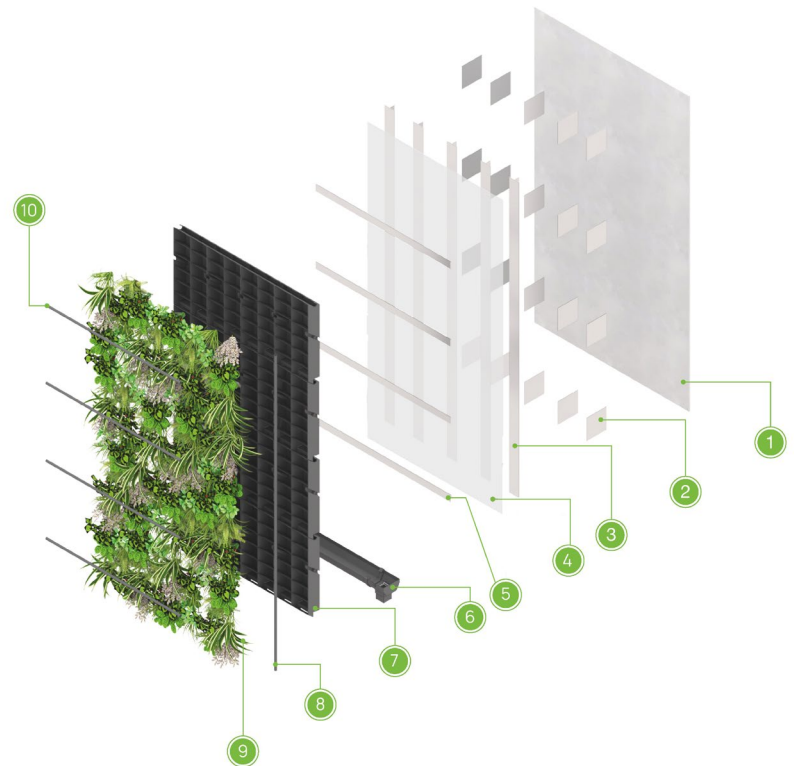
# Installation

---

## Helping Hand Build-up System

This build-up is suitable for a living wall that is to be applied as a cladding system onto a steel structure.

1. Indicative steel structure or cladding
2. Helping hand 'L' bracket
3. Vertical 'T' Rail
4. Waterproof membrane
5. 48x12mm ANS Fixing Rail
6. Osma Squareline Gutter or client specified
7. ANS Living Wall Module 500x250x100mm
8. 16mm vertical irrigation pipe
9. Planting
10. 16mm inline emitter pressure regulated irrigation pipe



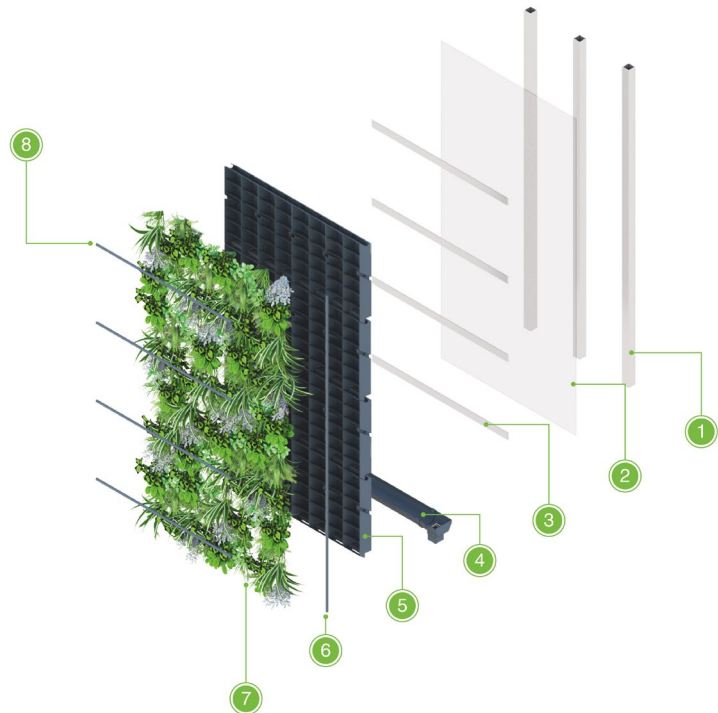
# Installation

---

## Steel Frame Build-up System

A purpose-built steel frame can be used to serve as a biodiverse sound barrier or site divider, such as at [The NEC, Birmingham](#).

1. Existing steel frame - maximum 600mm horizontal centres
2. Waterproof membrane
3. 48x12mm ANS Fixing Rail
4. Osma Squareline Gutter or client specified
5. ANS Living Wall Module 500x250x100mm
6. 16mm vertical irrigation pipe
7. Planting
8. 16mm inline emitter pressure regulated irrigation pipe





# Installation

---

## Backing Board Build-up System

This build-up is suitable for interior applications where there is an existing substructure.

1. Backing board
2. Waterproof membrane
3. 48x12mm ANS Fixing Rail
4. Osma Squareline Gutter or client specified
5. ANS Living Wall Module 500x250x100mm
6. 16mm vertical irrigation pipe
7. Planting
8. 16mm inline emitter pressure regulated irrigation pipe

