

BROADWAY

Acoustic Panels

 Primacoustic®

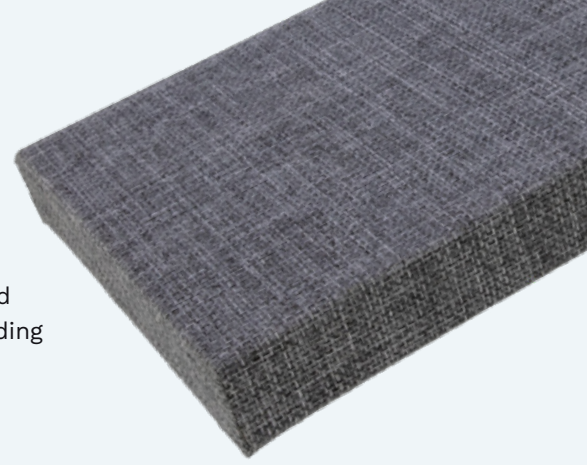


Be Heard

BROADWAY

Acoustic Panels

Finally, an acoustic panel that doesn't shy away from your demanding expectations for a critical listening environment. One with a proven track record of satisfied customers in high performance listening environments worldwide, from recording studios to corporate boardrooms.



Critical Acclaim

Creating the perfect listening environment is an admirable but often elusive goal. This is particularly true when it comes to critical listening spaces — a recording studio, a house of worship, a boardroom, or home theater. All environments where missing a musical nuance or an important phrase can have a significant impact — in terms of winning an award, closing a deal, or communicating an impactful message.

The pursuit of perfection is why, when it comes to critical listening environments, Primacoustic's high-performance Broadway sound absorption panels have been the choice of demanding audio professionals and enthusiasts for many years.

Versatile Enough to Match Your Environment

Made from high performance glass wool that delivers broadband absorption across all frequencies, Primacoustic Broadway panels come in a range of paintable/printable standard shapes and colors that can be mixed and matched for a wide range of critical listening environments.



Fire Ratings

CAN/ULC-S102-03 - Class A/1
ASTM E84 - Class A/1
EN13501-1 - Class A-s1,d0
AS/NZS 1530.3 - (I)0,(S)0,(H)0,(Sm)5

Sound Absorption

NRC:
1" (25mm) - 0.80
2" (51mm) - 1.00
3" (76mm) - 1.00
ASTM C423-02a; ASTM E795-05 (Type A)

Construction

Core Material: Formed, semi-rigid inorganic glass fibres.
Fabric Facing: Acoustically transparent polyester
Backing: Glass wool tissue micromesh
Edge Treatment: Sealed and hardened with resin
Density: 61b/ft³ (96kg/m³)
Recycled Content: Up to 51%

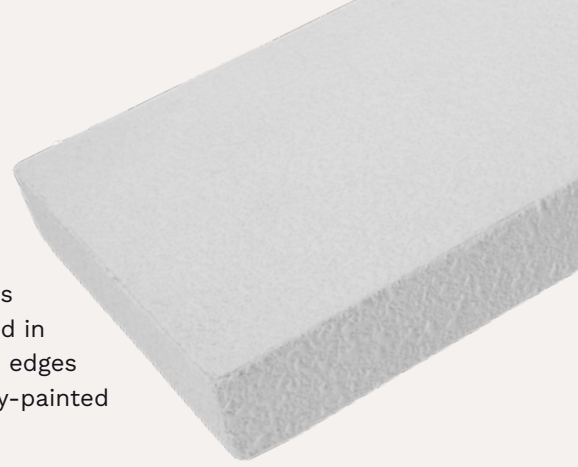
Accolades



BROADWAY

Paintable/Printable Acoustic Panels

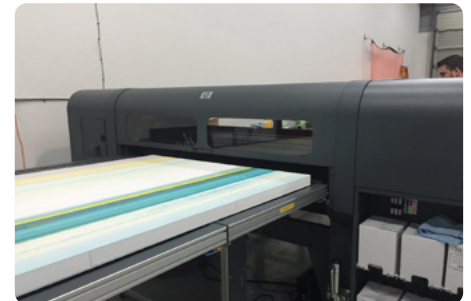
Primacoustic Paintables™ are an innovative acoustic panel range that are finished in Absolute White™, or can be repainted to the color of your choice! The design begins with the same high-density 6lb per cubic foot (96kg/m³) glass wool core that is used in the Broadway series panels. Rather than wrapping the panel in fabric, the face and edges of the Paintables are coated in a breathable latex finish that allows them to be spray-painted without affecting acoustic performance.



Paintables provide balanced absorption at all frequencies, and are available in a variety of sizes. This makes them suitable for both large scale and small room installations including houses-of-worship, airports, home theatres, offices, call centers, boardrooms, restaurants, video conferencing, huddle rooms, broadcast facilities and recording studios of all sizes.

Paintables Are Also Printable!

The unique coated surface of the Paintables panels can be custom printed at your local print shop. Using UV flatbed printer technology, many commercial printers can apply custom graphics, photos, logos, or the image of your choice to the face of the panel. This high-resolution printing applies a thin coating in vivid color without affecting the acoustic performance of the panel. Complete customization of your acoustic treatment is now possible!



Fire Ratings

CAN/ULC-S102-10 - Class A/1
ASTM E84-11b - Class A/1
EN13501-1 - Class B-s2,d0
AS/NZS 1530.3 - (I)0,(S)0,(H)0,(Sm)3

Sound Absorption

NRC (based on a 2" thick panel):
Unpainted - 0.100
Rolled Paint - 0.50
Light Spray Paint - 1.05
Heavy Spray Paint - 0.79
ASTM C423-02a; ASTM E795-05 (Type A)

Construction

Core Material: Formed, semi-rigid inorganic glass fibres.
Facing: Glass wool tissue micromesh sealed with water based latex paint
Backing: Sealed with acoustically transparent micromesh
Edge Treatment: Resin hardened with painted glass wool facing
Density: 6lb/ft³ (96kg/m³)
Recycled Content: Up to 51%

Accolades



BROADWAY Product Range

Wall Panels

Whoever said that 90% of all communication is nonverbal likely never tried to converse over the clattering of a noisy restaurant, or strained to hear a presenter's point in a cavernous conference room. Conversations in public spaces connect us, whether it's in a restaurant, house of worship, conference room, or any space where people come together. If your space is not acoustically designed to make sure people can be heard, those personal connections, and the potential benefits they provide for your business, such as 5-star reviews and return customers, can be lost. Broadway panels from Primacoustic let your customers, congregants, patrons — anyone in your place of business — Be Heard.



Scatter Block

12x12" (305x305mm)

1" (25mm) thick, Beveled Edge

Available Finishes: Black, Beige, Grey*



Element

16x14" (406x355mm)

1.5" (38mm) thick, Beveled Edge

Available Finishes: Black, Beige, Grey, Paintable*



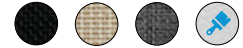
Control Cube

24x24" (610x610mm)

2" (51mm) thick

Square or Beveled Edge

Available Finishes: Black, Beige, Grey, Paintable*



Control Column

12x48" (305x1,219mm)

1" (25mm), 2" (51mm) or 3" (76mm) thick

Beveled Edge

Available Finishes: Black, Beige, Grey, Paintable*



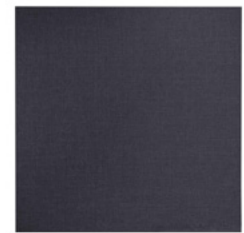
Broadband Absorber

24x48" (610x1,219mm)

1" (25mm), 2" (51mm) or 3" (76mm) thick

Beveled or Square Edge

Available Finishes: Black, Arctic White, Beige, Linen, Grey, Paintable*



48x48"

(1,219x1,219mm)

2" (51mm) thick, Square Edge

Available Finishes: Black, Arctic White, Beige, Linen, Grey, Paintable*



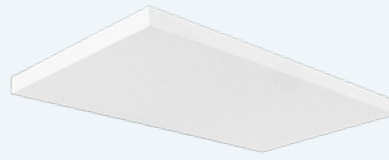
* Please note, only certain combinations of thickness, edge and finish are available. Please visit www.primacoustic.com to see the current range.

Can I re-cover the panel with another fabric?

Yes. This is easy to do using a spray-on adhesive. Simply put the fabric face down on a table, apply a light spray, and then place the Broadway panel on top. Trim the fabric and wrap following the same pattern as was done at the factory.

Ceiling Clouds

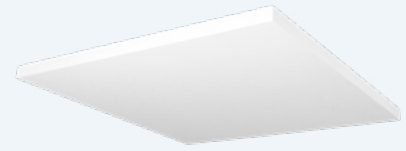
Every aspect of a room or space — walls, floor, and especially the ceiling — can contribute to problematic acoustic reflections, echoes, reverb, and other room anomalies. Enter Broadway Clouds, the perfect multi-shape panel solution for taming ceiling sound wave reflections. Broadway Clouds hang from the ceiling, capturing reflections by absorbing sound as it hits the face of the panel, trapping reflections on the back side.



Nimbus

24x48" (610x1,219mm)
1.5"(38mm) thick, Square Edge

Available Finishes: Black, Arctic White, Beige, Grey, Paintable



Altos

36x36" (914x914mm)
1.5"(38mm) thick, Square Edge

48x48" (1,219x1,219mm)
1.5"(38mm) thick, Square Edge

Available Finishes: Arctic White, Paintable



Halo

36x36" (914x914mm)
1.5"(38mm) thick, Square Edge

48x48" (1,219x1,219mm)
1.5"(38mm) thick, Square Edge

Available in Paintable Absolute White™ only



Hexus

48x48" (1,219x1,219mm)
1.5"(38mm) thick, Square Edge

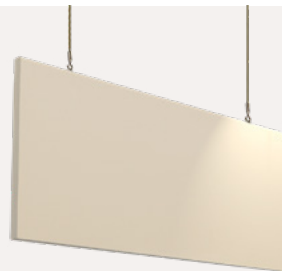
Available in Paintable Absolute White™ only



Ceiling Baffles

You've likely experienced it — being in a large room with lots of ambient noise and struggling to be heard or trying to hear a featured speaker or announcer.

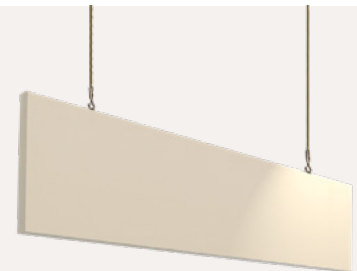
Large rooms present a range of acoustic challenges when it comes to controlling two common culprits — reverb and ambient noise. Full-sized Broadway Baffles are designed to tame acoustic anomalies in large spaces that have low ceilings, such as community halls, conference rooms, meeting spaces and houses of worship.



Saturna

24x48" (610x1,219mm)
1.5"(38mm) thick, Square Edge

Available Colours: Black, Arctic White, Beige, Grey, Paintable



Saturna LP

12x48" (305x1,219mm)
1.5"(38mm) thick, Square Edge

Available Colours: Black, Arctic White, Beige, Grey, Paintable



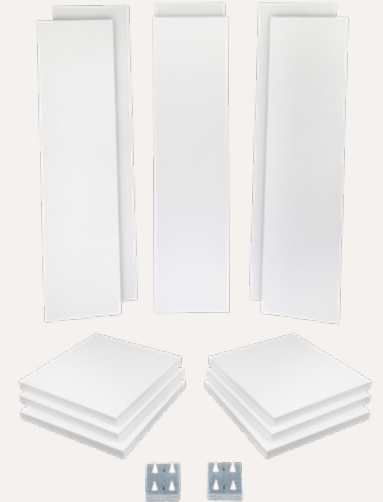
Both Broadway Clouds and Baffles include all the necessary hardware required for installation





Clarity Room Kit

Your business revolves around collaboration and conversation. Whether it's your home office or a conference room, the harder it is to hear clearly in your collaborative meeting spaces, the greater the chances that meeting results will be marginal. Being heard during a meeting requires attention to your room's acoustics and natural characteristics. Our acoustic panel solutions for conference rooms and meeting spaces are designed to ensure that everyone in the room can be heard — clearly. As a matter of fact, our acoustic panel room kit does this one thing so well we put it in the name — Clarity.



Clarity

6x Control Columns, 6x Control Cubes
Installation Hardware
2"(51mm) thick, Square

Available Finishes: Arctic White, Linen, Paintable



Hercules Impact Resistant Acoustic Panels

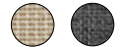
The name alone says it all. Hercules. A durable impact-resistant acoustic panel designed to withstand the potential damage that can occur in public spaces such as gymnasiums, offices, classrooms or other spaces. While most sound panels are delicate and susceptible to damage, Hercules acoustic panels stand apart, ready to reduce reverberation in a boomy gym or arena, while keeping their "new" appearance, even after impact from a basketball or bump by an individual. Hercules panels are manufactured from the same high-density glass wool core as standard Broadway panels, but the face is covered with a thick, high density rigid glass wool layer that absorbs most frequencies, while protecting the panel from possible damage due to accidental contact.



Hercules

24x48" (600x1200mm)
2"(51mm) thick, Square

Available Finishes: Beige, Grey



Fire Ratings

ASTM E84-17 - Class A/1

Sound Absorption

NRC: 0.98

ASTM C423-02a; ASTM E795-05 (Type A)

Construction

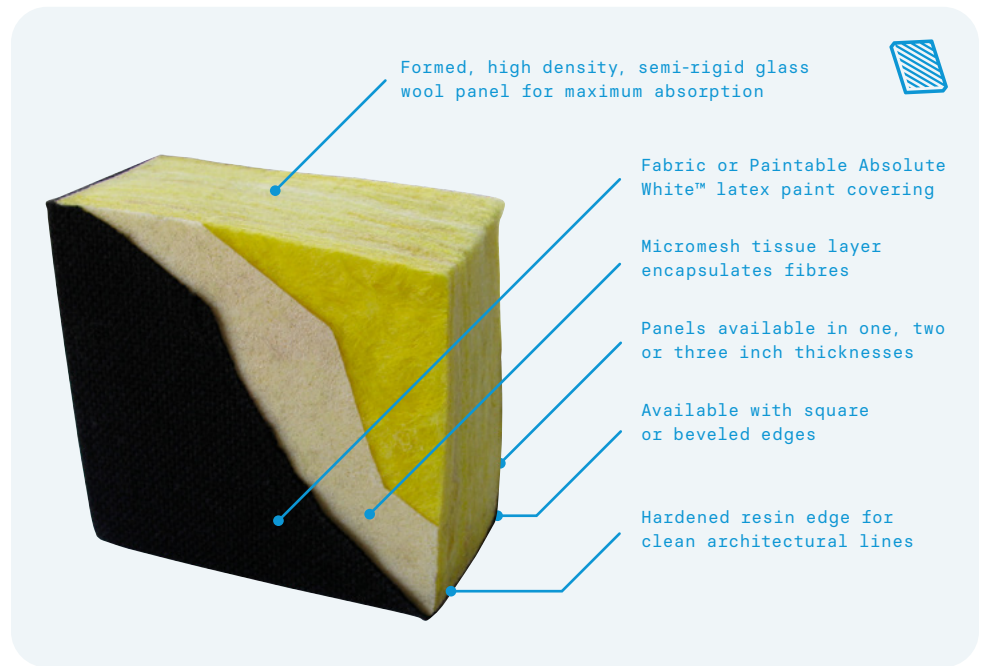
Fabric Facing: High-density layer 20lbs/ft³ (320kg/m³) with rigid acoustically transparent polyester.

BROADWAY Panel Materials

Primacoustic Broadway panels are constructed of high density 6lb per cubic foot (96 kg/m³) glass wool with resin hardened edges. This process works in tandem with the micromesh to fully encapsulate the glass wool to eliminate fibres from escaping.

Panels are then covered in one of two finishes; an acoustically transparent fabric or, for Paintables, a white glass wool tissue sealed with our Absolute White™ latex paint.

To address safety concerns, Broadway panels have been tested to meet stringent Class-A/1 fire ratings making them suitable for use in residential, commercial and industrial spaces.



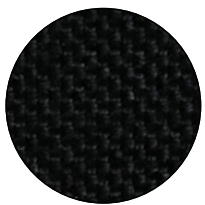
Will painting acoustic panels not change their acoustic properties?

Yes and it depends on how thick a coat of paint is applied to the surface. With thicker coats of paint you will reduce the high frequency absorption and the paint membrane will trap a bit more bass. Paintables have been formulated to allow a light coat of spray paint to be applied without affecting the acoustic performance.

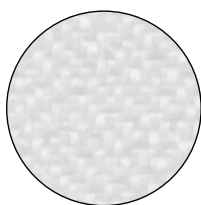
Can I use any type of paint on the Paintables?

Yes. A thin coat applied with an airless sprayer will do the best job. These can be rented at most tool rental establishments.

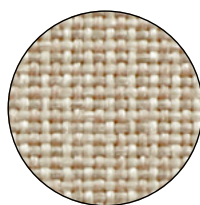
Finish Options



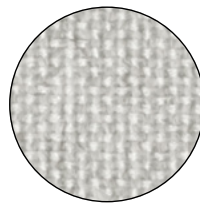
Black



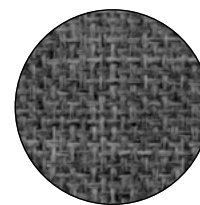
Arctic White



Beige



Linen



Grey



Paintable Absolute White

Broadway panels may be mounted using various methods to suit your specific application. In addition to using typical screws and adhesives Primacoustic offers a series of different impalers to provide an installer with a simple, quick and effective method of mounting Broadway acoustic panels onto walls without causing serious surface defacement.

Wall Panels

The most common approach to mount Broadway panels is directly on the wall surface. Primacoustic sells a range of impalers for mounting panels in different situations. All you do is screw a couple of Impalers to the wall and hang the panel like a picture. If the panels will be in a high traffic area, add a small dab of construction adhesive in between the Impaler and the panel to lock it in place.

Additional air space can be added behind the panels by using Primacoustic Offset Impalers. This will increase the bass absorption.

Other installation options are also possible: you may choose to screw the panels directly onto the wall, use construction adhesive or even velcro. It all depends on the surface you want to mount the panels to, and the intended use case.



Can I cut the Broadway panels?

Yes. Just keep in mind that if you are going to cut them down to size, you will need to recover the edge. Simply pull back the fabric, cut and then glue the fabric back on using a spray adhesive.

Clouds

Primacoustic's range of acoustic clouds all come packaged with the necessary hardware required to suspend them horizontally from a ceiling. Each cloud kit includes a set of Helix™ anchors, SlipNot™ suspension cables, and T-anchors and eyehooks for installation on either solid or hollow-backed ceilings.

Clouds may also be wall mounted using Surface Impalers or installed as vertically hanging baffles using Corkscrew™ anchors (sold separately).

Baffles

Saturna Baffles come with all the hardware required for installation. Each Saturna kit includes a set of Corkscrew™ anchors, SlipNot™ suspension cables, and T-anchors and eyehooks to suspend the baffles vertically from either solid or hollow-backed ceilings.

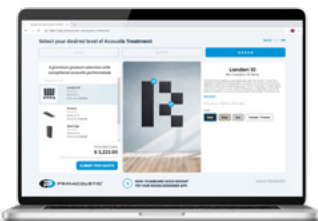
Maintenance

A light vacuum is usually all that is needed to keep Primacoustic Broadway Panels clean. If the panel has been soiled, then very light detergent and a damp warm water cloth.

If your panels will be in a high traffic area, we recommend using Scotch Guard. This way, wiping them off with a moist cloth will help keep them looking clean and sharp!

How much Acoustic Treatment do I need?

Whether this is your hundredth install, or your first time choosing acoustic treatment, we've made it easy to find the right solution for any room. Our suite of apps help direct you to pick the perfect Primacoustic products to start creating a better space.



PrimaPro Calculator

Get an instant product recommendation for your room. Simply enter a few details about the room and the app will generate a quote.



PrimaPro Designer

Have an idea you want to visualize? Build your own custom solution and see it in 3D with the PrimaPro Designer App.

Free Quote

If you still need more help finding the right products feel free to reach out to us on our Free Quote form and one of our experts will help you find the right solution for your room.

Visit [primacoustic.com](https://www.primacoustic.com)
to learn more

R870 2005 00 / 01 2024