

TELASCAPES

Stretch Fabric System

 Primacoustic®



Be Heard

TELASCAPES

Stretch Fabric System

The TelaScapes wall track system makes it simple to acoustically treat any commercial or residential space. It combines high level, effective sound absorption with options to personalize the look of the treatment.

The system is comprised of three fully customizable components: a **modular track system** that can be mounted almost anywhere, **filler panels** that provide broadband acoustic absorption, and a wide selection of durable **stretch fabric** in a variety of colour options.

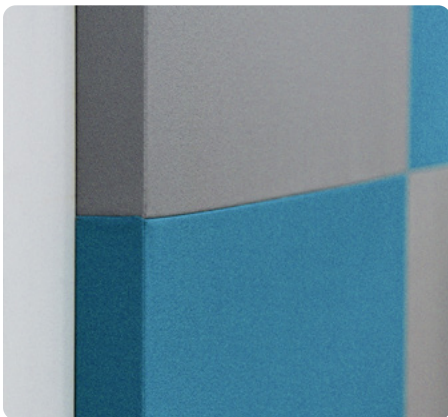


Step 1

Using the modular TelaScapes PVC track pieces, create the design and frame for the rest of the acoustic treatment. The tracks are compatible with almost any flat surface and are easy to mount.

Step 2

Primacoustic filling material panels are easily mounted within the spaces created by the track system, a variety of panel sizes are available to reduce installation time for larger rooms, and mounting hardware makes it easy to affix the panels to any wall surface.



Step 3

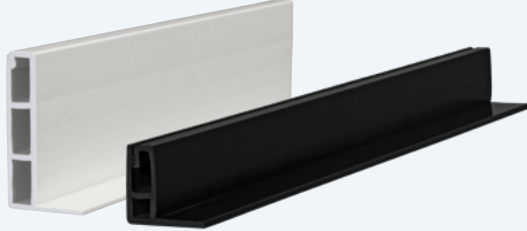
Finally, fabric is stretched over the panels, easily tucked into place with Primacoustic's installation tools for a seamless fit. A wide variety of colour options are available to suit the existing décor of any space.



[Scan this code to learn more about the TelaScapes system and to watch a full step-by-step install](#)

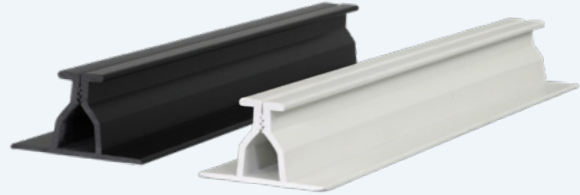
Track

The TelaScapes track system includes two types of track pieces: Perimeter Tracks for outside edges and Mid-Wall Tracks for joining two sections of paneling together. Both of these track types accommodate heavy fabric types and Broadband Raw Acoustic Panels. The durable track is built from recyclable PVC or recycled uPVC, and can be cut to size if needed. Light and dark colour options are also available for the track itself, so the track edges can blend seamlessly with the chosen fabric and surrounding décor.



Perimeter Track

1"(25mm) or 2"(51mm) thick
48"(1,219mm) or 96"(2,438mm) long
100% recycled uPVC
Available Finishes: Black, White*



Mid-Wall Track

1"(25mm) or 2"(51mm) thick
48"(1,219mm) or 96"(2,438mm) long
PVC or 100% recycled uPVC
Available Finishes: Black, White, Neutral*

* Please note, only certain combinations of thickness, length, material and finish are available. Please visit www.primacoustic.com to see the current range.

Filler Material

Primacoustic sound absorbing panels have been successfully employed in thousands of installations across the globe. Both our material options absorb audio frequencies across a wide bandwidth, helping to attenuate both low and high frequency acoustic sources in any space as well as reducing ambient sound levels. For critical listening environments, such as studios, we recommend the Broadband Raw panels as they have a slightly expanded absorption range.

Fire Ratings

CAN/ULC-S102-03 - Class A/1
ASTM E84-09 - Class A/1
EN13501-1 - Class A2-s1,d0
AS/NZS 1530.3 - (I)0,(S)0,(H)0,(Sm)5

Sound Absorption

NRC: 1.00
ASTM C423-02a; ASTM E795-05 (Type A)

Construction

Core Material: Formed, semi-rigid inorganic glass fibres.

Fabric Facing:
Raw panel with sealed micromesh

Backing: Glass wool tissue micromesh

Edge Treatment:
Sealed and hardened with resin

Density: 6lb/ft³ (96kg/m³)

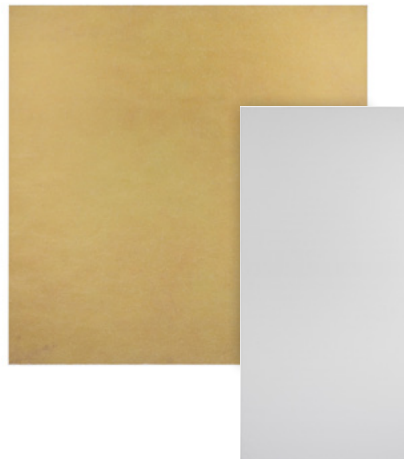
Recycled Content: Up to 40%

Accolades



Broadband Raw Panel

48x48"(1,219x1,219mm)
2"(51mm) thick



TelaFill PET Panel

24x48"(610x1,219mm)
or 48x96"(1,219x1,845mm)
1"(25mm) thick

Fire Ratings

ASTM E84-09 - Class A/1

Sound Absorption

NRC: 0.70
ASTM E795-05 (Type A)

Construction

Core Material: Thermally bonded and laminated PET fibres.

6.0lbs/ft³ (96kg/m³)

Edge Treatment: Untreated

Recycled Content: 60% post-consumer PET. 100% Recyclable

No VOCs, No binders, No Formaldehyde. Odourless, Non-allergenic and Non-irritant. Does not shed. Safe to handle without protective equipment.

Accolades



TELASCAPES Product Range

Fabric

A wide array of stretch fabric color options are available, allowing you to keep aesthetics in mind as you acoustically treat any room. We partner with Guilford of Maine to give you access to multiple colors to suit your décor. A printable fabric option is also available, for even further customization.

Cleaning and Maintenance

Clean with water based cleaning agents, foam or pure, water free solvents. Vacuuming or light brushing is recommended to prevent dust and soil buildup. May also be disinfected with hydrogen peroxide, alcohol, and quaternary ammonium (quat) based cleaners.

Fire Ratings

ASTM E84-17 - Class A/1
CA Technical Bulletin 117-2013
Section 1



Construction

Recycled content:
up to 100% Recycled polyester



Installation Tools

Primacoustic has specially-designed tools to make the installation of the TelaScapes system easy. Tucking fabric into the channels of the tracks can be a delicate task and without the right tools can be difficult to ensure the fabric looks its best. These tools were custom-sourced and designed to assist each stage of the installation.



Schluter washers are also available for securing the raw panels to the wall

Installation

The TelaScapes system allows a variety of different shapes and designs to be created.

When it comes to install day, Primacoustic offers a suite of TelaScapes resources. Including the range of installation tools and a detailed step-by-step guide to help with the planning, prep, and final assembly of the TelaScapes panel.

Cutting Track

Track pieces can be cut to size using an 8 or 10" miter saw suitable for cutting plastic. 45° cuts are required for the track joints.

Perimeter tracks can be pre-wrapped with fabric to create a seamless edge.

Mounting Track

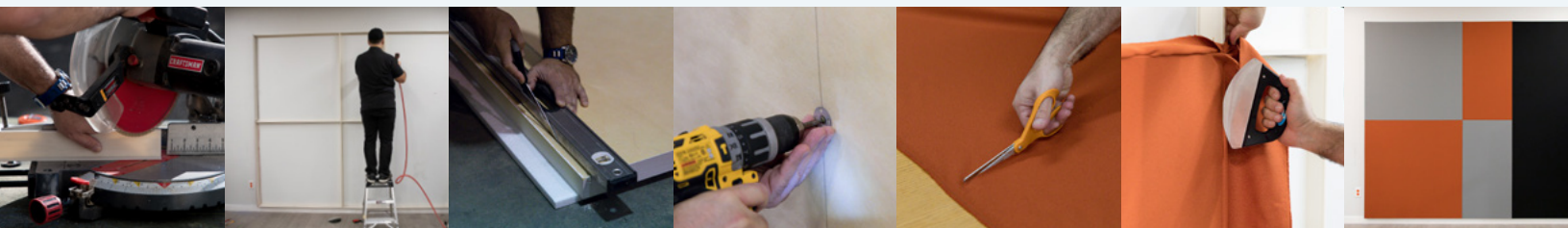
Tracks can be attached to drywall using staples or screws every 1-2". For attaching track to surfaces other than drywall your tool requirements will vary.

Mounting Filler Material

The filler panels can be cut to size with a utility knife. They can then be placed within the track design and secured to the wall using an appropriate length drywall screw and washers.

Installing the Fabric

After cutting to size, the fabric sections can then be tucked into the slots at the top of the track using one of the installation tools. The fabric is held in place by friction alone. Working across the panel, one side at a time, it's possible to create a smooth, even surface.



R870 2007 00