

Best-Nr. 001275/77,09.18.5.9.2. Printed in Germany - We reserve the right to make technical improvements and enhance the appearance of the products shown.



DURAVIT AG
Werderstr. 36
78132 Hornberg
Germany
Phone +49 7833 70 0
Fax +49 7833 70 289
info@duravit.com
www.duravit.com

YOUR FUTURE BATHROOM



www.duravit.com



The time to start something new.
Contemplation of the things
that we find soothing in life.
The decision to modernize.
The best moment? Here and now.
With Duravit.

We develop the right interior,
sustainable furniture and comfort-
enhancing technologies for anyone
who wants to breathe life into
their bathroom. Some of this can be
found in the new Badmagazin,
more on the internet or ask your
bathroom planner, architect and
Duravit dealer.

Duravit. Living bathrooms.
The original, since 1817.



XSquare

Design by Kurt Merki Jr.





The perfect synthesis.

The XSquare bathroom furniture range combines different materials to produce something quite new and exciting. The surfaces of the cabinets and vanity units contrast with the striking chrome profiles featured throughout the range and lend it a unique, high-class style.



Brioso

Design by Christian Werner



Tone-in-tone handles



Polished chrome handles

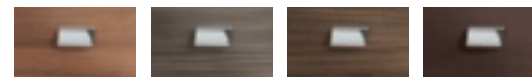


22 White High Gloss 18 White Matt 09 Light Blue Matt 07 Concrete Grey Matt 91 Taupe Matt 43 Basalt Matt 49 Graphite Matt

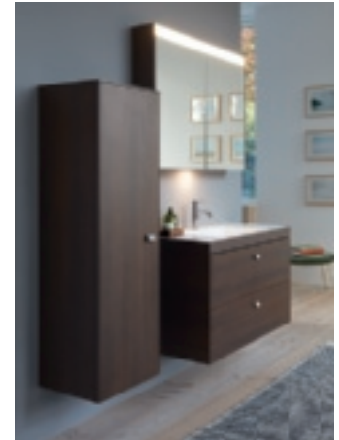
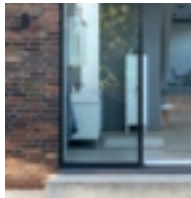
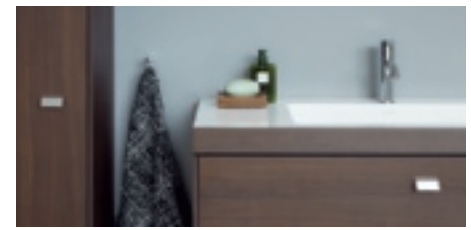
Polished chrome handles



75 Linen 31 Pine Silver 52 European Oak 73 Ticino Cherry Tree



79 Natural Walnut 51 Pine Terra 21 Walnut Dark 53 Chestnut Dark



Contemporary design with sweeping casualness.
 Characteristic details are the precise, finely nuanced lines
 and the striking, ergonomically designed handle.

Luv

Design by Cecilie Manz

**“There’s a piece
of nature within Luv.”**

Cecilie Manz





Nordic purism with timeless, emotional elegance.

The Luv above-counter basins come in different sizes as plain bowls and with a tap platform right or left. The outer surfaces are available in White, Grey or Sand in a satin matt finish as well as glazed in White. For a harmonious look: the ceramic drain cover.

Matching tap fittings: C.1



80 cm



60 cm



42 cm



36 White Satin Matt



92 Stone Grey Satin Matt



39 Nordic White Satin Matt



97 Light Blue Satin Matt



60 Taupe Satin Matt



98 Night Blue Satin Matt



17 Quartz Stone
White Structure



33 Quartz Stone
Grey Structure



25 Quartz Stone
Sand Structure



77 American Walnut
solid wood





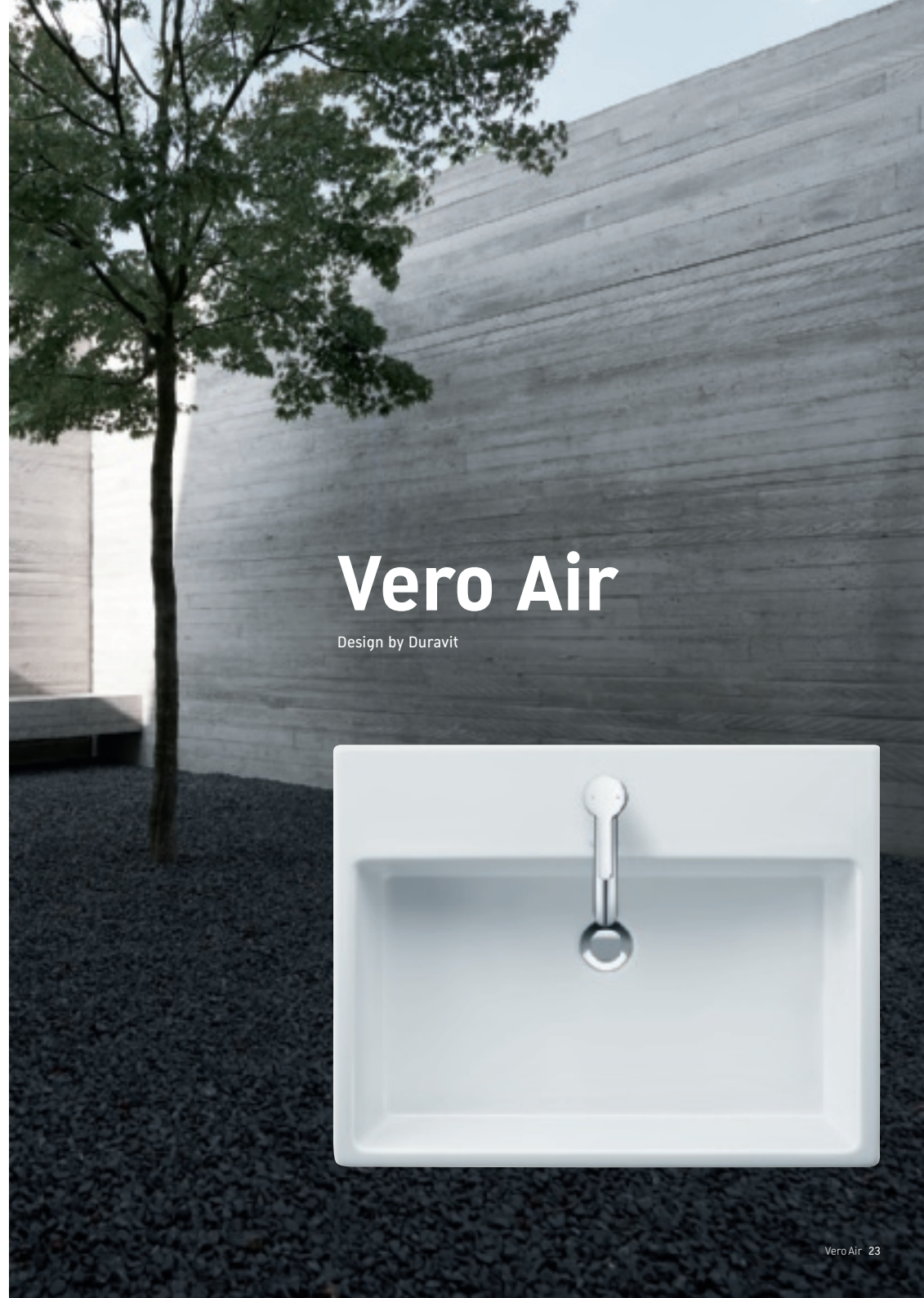
DuraSquare

Design by Duravit



Straight-lined and organic.

Pared down and finished to a high quality: the design of the new architectural series combines the precise edges of the rectangular outer form with the organic flow of the inner contours.



Vero Air

Design by Duravit





New precision, perfect proportions. Architectural. Straight-lined.

Reduced edges, exact radii and the straight-lined inner surfaces form the striking features of the series.

ME by Starck

Design by Philippe Starck

**"Modern design
avoids design."**

Philippe Starck



Pure reduction. Real elegance.

Reduction, functionality, clarity and elegance. A timeless design concept responds to an overcrowded world. The desire of neatness reflects a puristic lifestyle. A combination of select materials and subtle luxury. Extravagant, but not extroverted. Just like ME by Starck.

Starck 1

Design by Philippe Starck



Back to the beginnings of bathing culture.

In 1994, inspired by the bucket, the tub and the washbowl, Philippe Starck created a complete bathroom featuring pioneering craftsmanship that appears as fresh and new today as it was then.





Modelled on nature, based on the principle of reduction.

The ceramics seem to flow gently rather than have austere geometric lines. The unadorned design of this range takes its place amongst the design classics.



Starck 2

Design by Philippe Starck



Starck 3

Design by Philippe Starck



One design, many options.

Starck3 introduced design to a segment where there was no design. And at surprisingly good value for money. With more than 50 models and 64 variants, Starck3 simply meets all requirements.

Cape Cod

Design by Philippe Starck





77 American Walnut solid



76 European Oak solid



81 White Oak solid



95 Vintage Oak solid



85 White High Gloss



85 White High Gloss with doors





A bathroom range like a day at the beach.

Produced from solid wood, each of the consoles and shelves from the Cape Cod bathroom furniture range features a unique grain. The washbasin is like nothing you've seen before: high-quality, attractive porcelain, made possible by the innovative material DuraCeram®.

DuraStyle

Design by Matteo Thun & Antonio Rodríguez



Big on style, small on price.

High functionality and the familiar Duravit quality, plenty of scope for combination and composition. And all this at an extremely affordable price. The overall range affords impressive functionality – both in private bathrooms and in the project sector. Two finishes – light and dark – present even more options.





DuraStyle Basic

Design by Duravit



Simple design language with high functionality.

The DuraStyle Basic toilets have been upgraded – visually and technically completely redesigned at an attractive price. The Duravit Rimless® flushing technology ensures hygienically perfect flushing results. With a puristic design, the toilets can be perfectly combined with many Duravit bathroom series.



Vero

Design by Duravit / Kurt Merki Jr. (Bathroom furniture)

Consistency and comfort come together.

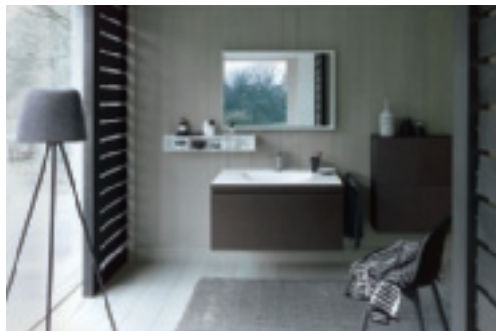
Not without reason is the Vero ceramic series a modern design classic: its style, consisting entirely of rectangles, is extremely elegant and timeless.





The innovative connection of ceramics and furniture.

The Darling New furniture washbasin and the L-Cube vanity unit form a perfect harmony. And all because of the new c-bonded technology. The furniture starts exactly where the ceramic ends. The joint between the two materials is durable, seamless and waterproof.



Darling New c-bonded

Darling New
Design by sieger design

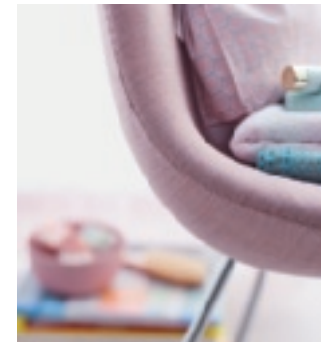
L-Cube
Design by Christian Werner

Happy D.2

Design by sieger design



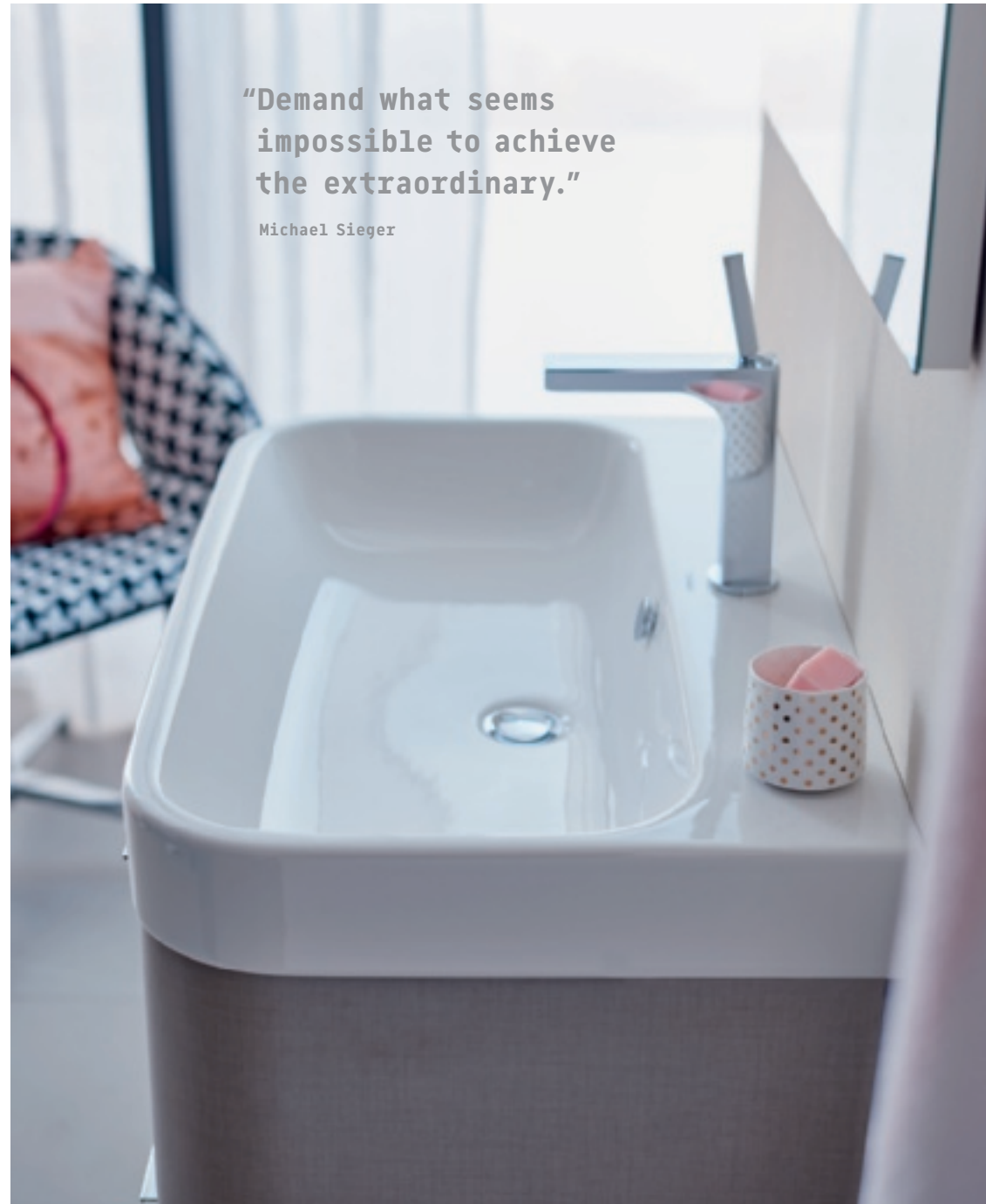
Elegance is timeless.
Gently rounded edges and clear, geometric forms create a gracefully composed, complete bathroom.





Not only visually convincing.

Happy D.2 brings a pleasant tactile sensation into the bathroom with its "Linen" textile decor.



"Demand what seems impossible to achieve the extraordinary."

Michael Sieger





P3 Comforts

Design by Phoenix Design

Perfect comfort that is perfectly cool.

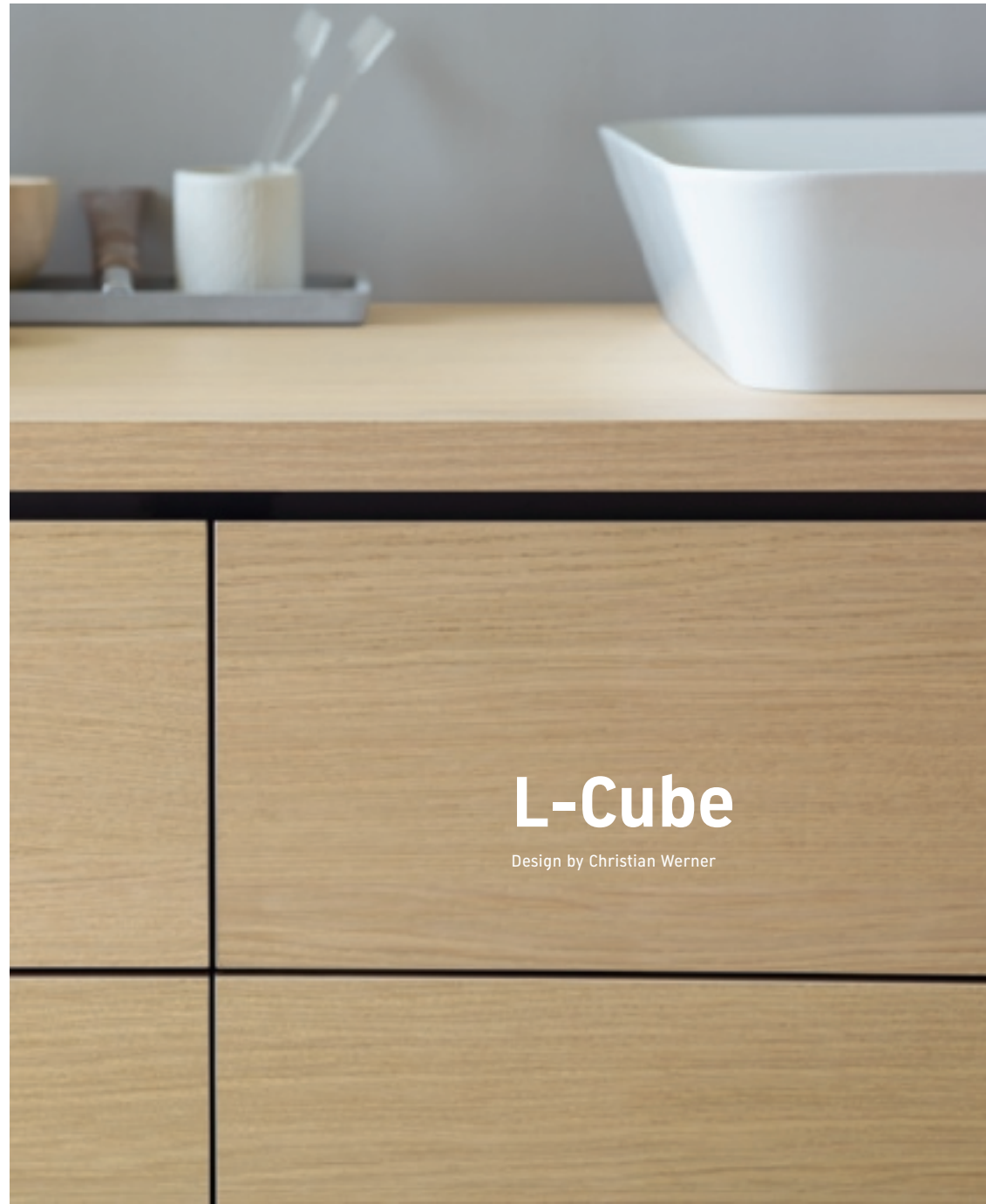
P3 Comforts offers products with many comfortable features: the separation of wet and dry areas, generous surface areas for bathroom essentials and elegant design with gently curved edges and soft pleasant transitions.





Contemporary and contemplative, bathroom furniture as a collage.

No handles, no unnecessary elements, no distractions. A key characteristic of the range is a shadow gap that surrounds the fronts and sides of the furniture. This visual framing places the washbasin on a higher level – making it appear as if the furniture and furniture fronts do not touch one another. The style, function, "feel" and color scheme can be selected individually, allowing you to create customized storage solutions.



L-Cube

Design by Christian Werner



Delos

Design by E00S

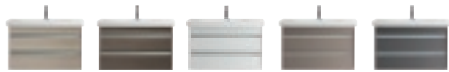


Technology becomes magic.

There are no handles to interrupt the clear design: the cabinets are easily opened by the slight overlap of the doors and the drawers by tip-on technology. The console has no visible carrier construction, which gives it a light, floating character.

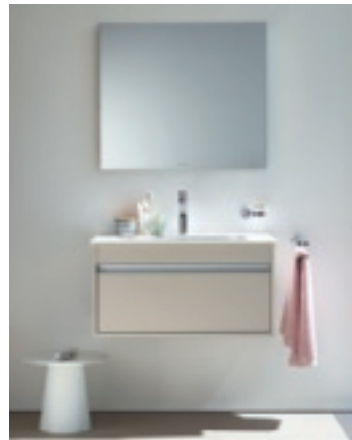
Ketho

Design by Christian Werner



Low budget – high standard.

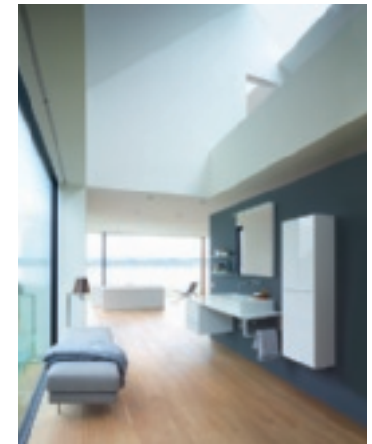
Big on design, small on price. With a bathroom furniture program that is ideal for first-time buyers and has a reduced look making it completely at home in any modern bathroom.





X-Large

Design by sieger design



Slimline storage expert for small and large bathrooms.

X-Large combines extra-large storage space with an elegant form and tremendous flexibility for lots of different configurations. Delicate contours, ingenious shadow gaps and a mix of open and closed fronts create bathroom furniture that offers more than meets the eye.

1930 Series

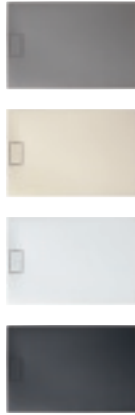
Design by Duravit



A modern interpretation of traditional country living.

The striking, octagonal basic form is typical of the design of the 1930 Series. Since ancient times, the octagon has symbolized perfection.



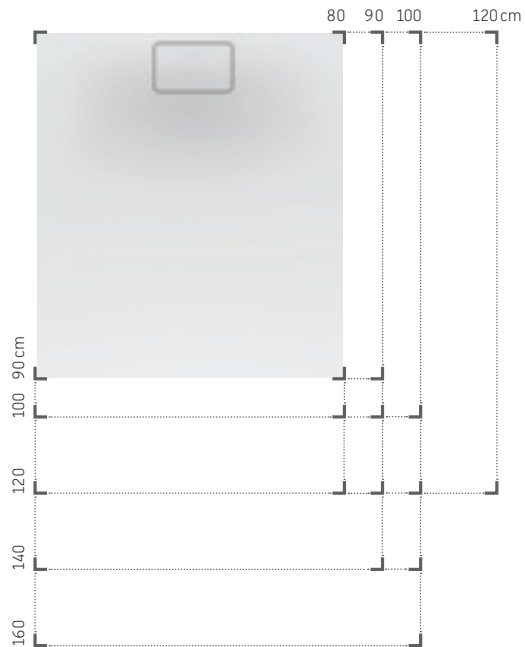


Stonetto

Design by E00S

Convincingly authentic.

The Stonetto shower tray communicates an entirely new, archaic shower sensation. Inspiration from the E00S design group: a stone surface worn and formed by water. Created in its entirety from DuraSolid®, the shower area and outlet cover form a single visual unit. Available in 12 sizes and 4 colors.

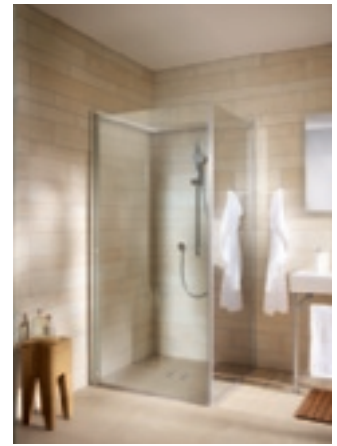


OpenSpace

Design by E00S

Creating space.

OpenSpace is the shower enclosure that enlarges the bathroom. The good value for money is based on the simple design of the wall profiles – made of high-gloss polished aluminum. After showering, the glass doors can simply be “folded” back against the wall.



OpenSpace B



Shower + Bath

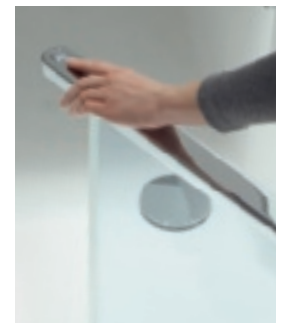
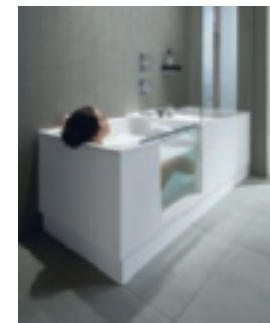
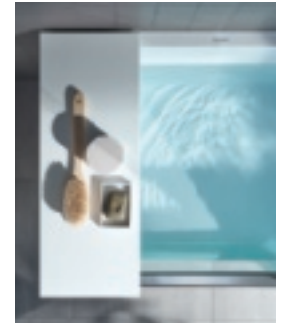
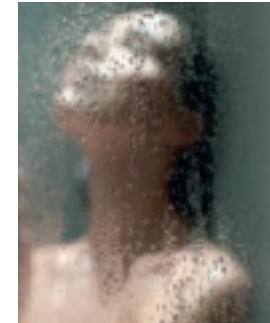
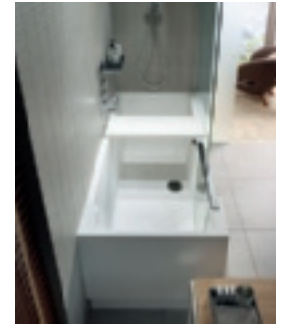
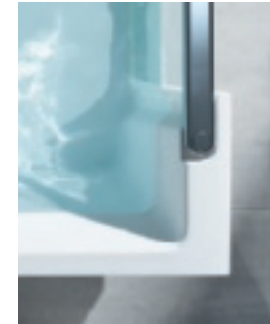
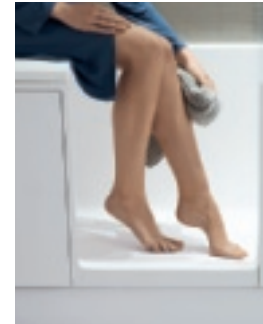
Design by E00S

**"Bath or shower?
We like both."**

E00S

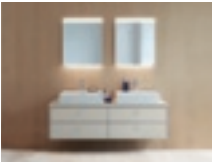
Walk-in shower and bathtub in one.

Bathtub, bathtub paneling and base made from DuraSolid®: the innovative material enables sophisticated designs – narrowly defined radii, high-quality, generously sized shower area, comfortable large bathtub.



Universal consoles

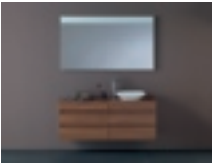
Simply unique: Duravit unifies the console ranges and thus offers individual and simple design solutions. The basis for this are the furniture ranges Briosio, L-Cube, Vero, Happy D.2, Delos, DuraStyle, Ketho and X-Large. The organizer systems are perfectly harmonized with the respective bathroom furniture - optionally available in solid American Walnut or Maple.



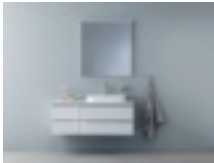
Briosio



Delos



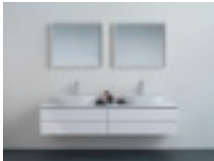
DuraStyle



Happy D.2



Ketho



L-Cube

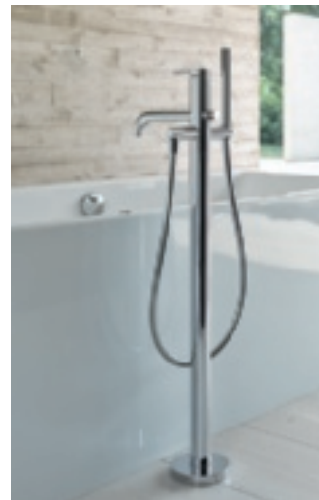


Vero



X-Large





C.1

Design by Kurt Merki Jr.

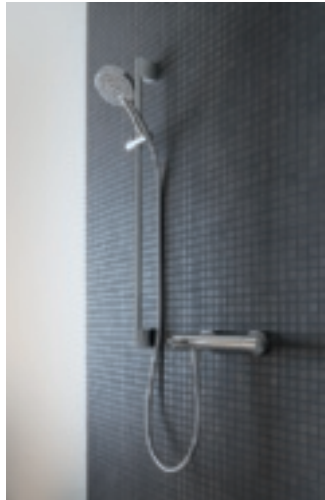
Perfect form, perfect functionality.

The C.1 tap fitting range continues Duravit's high design standards in the area of bathroom tap fittings. Designed by Kurt Merki Jr. Four different sizes make the C.1 tap fittings compatible with any washing area, from a handrinse basin through to a washbowl.



B.1

Design by Duravit

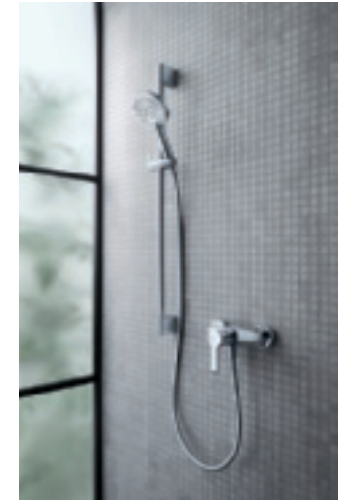


Familiar soft forms for private and project bathrooms.
Soft contours, appealing and timelessly elegant. A universal range of tap fittings for all standard applications: washing area, shower, bathtub and bidet.

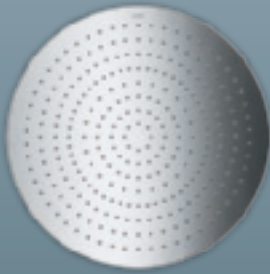


B.2

Design by Duravit



Clear, straight-lined tap fittings for all applications.
Bathroom users who appreciate clarity, pared-down design and a sober aesthetic will find a perfect form of expression in the B.2 tap fitting range – for private bathrooms and the project sector.



Overall design harmony.

Because Duravit sees the big picture when it comes to bathrooms, we also design our products to be combined with one another. For example, our tap fitting ranges are perfectly complemented by matching hand showers and showerheads with various corresponding accessories. This makes it that much easier for the bathroom professional and user to plan a harmonious bathroom.

