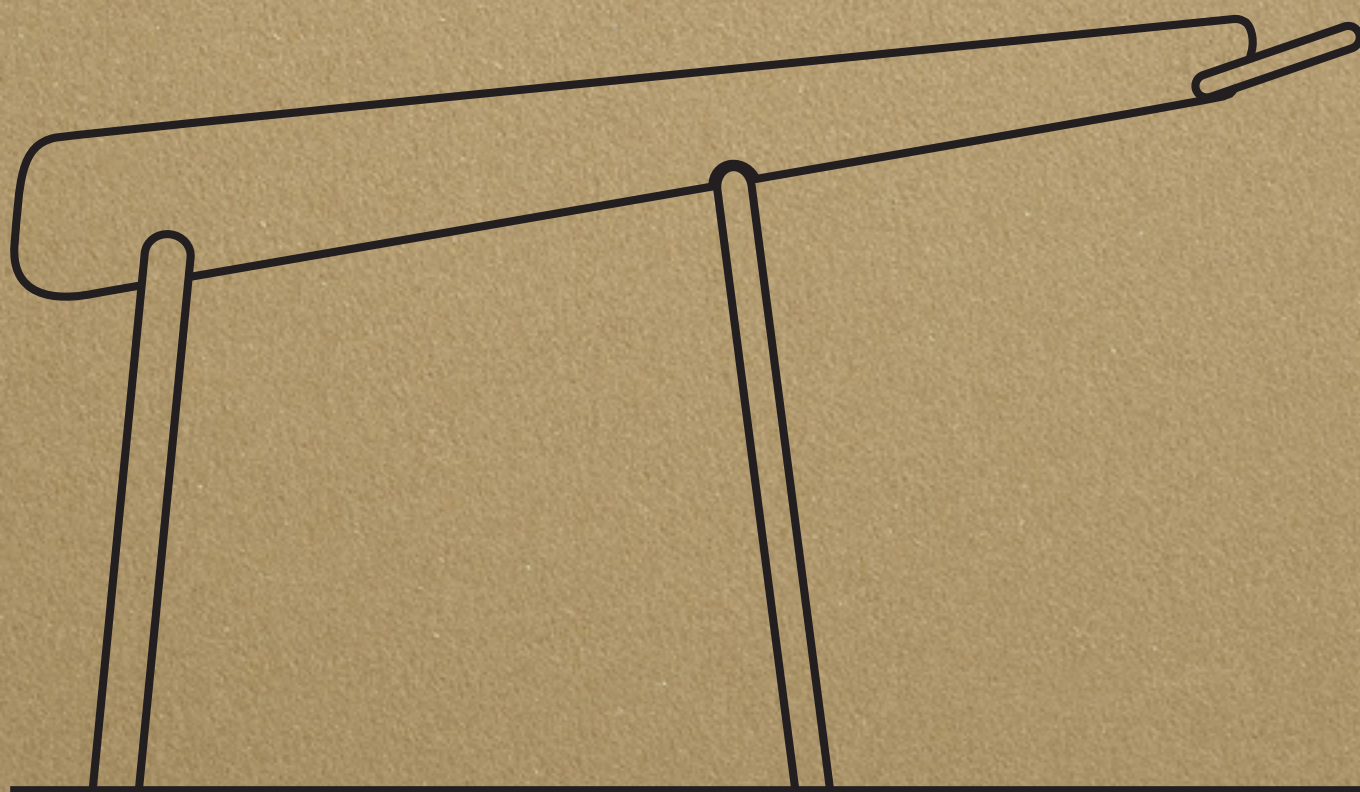


2023

GLÄNTA

Design



When Glänta Design began, our focus was to bring back the playfulness and joy to training in public spaces. By launching gym series that didn't primarily appeal to the already converted, but rather invited everyone to try, we've succeeded in making good progress towards this vision.

Our big project for 2023 is now to bring imagination back to the country's playgrounds! Without telling children exactly what to do, we offer them a canvas for their imagination. Through the series "Torpet" and "Havet," we hope to offer not only a stimulating play environment for children, but also a visually stimulating environment for everyone.

Marcus Adolfsson, CEO

We at GLÄNTA



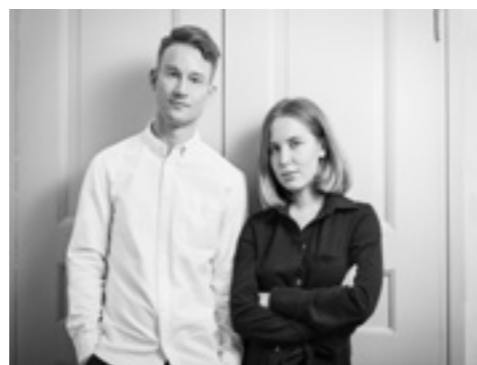
Marcus Adolfsson, Fabian Ryd, Magdalena Kowalczyk och Jan Olsson Loftén, Johan Åhrén (absent).

Gläntan Outdoor Gym	3 - 4
Dungen Outdoor Gym	7 - 10
Strå Park Furniture	13 - 14
Vinkeln Park Furniture	17 - 18
Skala Park Furniture	19 - 23
Gabion Park Furniture	24
Skugga Trellis	25 - 26
Torpet Playground	29 - 30
Havet Playground	33 - 34
Övrigt Signs & Bike Rack	35

2022 Designers



Jan Olsson Loftén



ODDA Design Studio



PettersonRudberg



Karlsson & Björk



Gläntan

Design: Jan Olsson Loftén

The series “Gläntan,” as the name suggests, can symbolize much of the entire company’s origins. With the ambition to combine training and design and make it easily accessible for all target groups, this series is highly appreciated by both customers and users.



Salamandern

Art 267167

One of the most important aspects of training is rest and recovery. Therefore, it's natural to have a bench for this purpose. With the handlebar construction, it also opens up the possibility for, for example, modified push-ups when you've finished resting.

Material: Stainless steel & oak
 Dimensions: H: 560 W: 1700 D: 440 S: 460 (mm)
 Primary training: Rest



Gråsuggorna

Art 267150, 267155

Through various forms of stepping, lunging, and jumping, "Gråsuggorna" are a perfect introductory tool for the inexperienced exerciser, while also being an essential component in the regular exerciser's routine.

Material: Stainless steel & oak
 Dimensions: H: 350/200 D: 300 W: 560/500 (mm)
 Primary training: Legs, cardio

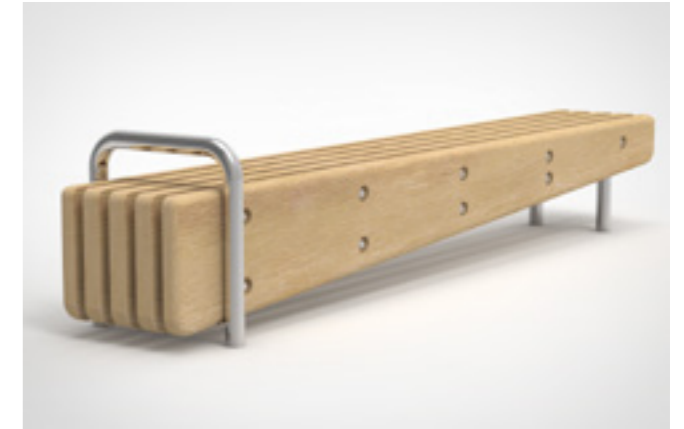


Gäddan long

Art 267154

On the long "Gäddan", the possibilities for different forms of push-ups and tricep exercises are endless. It also enables various forms of leg strength and cardio training, while the flat surface on top naturally invites rest and stretching.

Material: Stainless steel & oak
 Dimensions: H: 650 W: 2400 D: 460 (mm)
 Primary training: Arms, legs, core, stretching



Gäddan short

Art 267153

With a low bar placed at one end, the short "Gädda" facilitates various abdominal exercises and, just like the long "Gäddan", provides a surface for rest and stretching while also allowing for both leg and cardio training.

Material: Stainless steel & oak
 Dimensions: H: 470 W: 2000 D: 460 (mm)
 Primary training: Core, stretching



Busken

Art 267157

"Busken" offers a range of opportunities for upper body training in the form of dips or modified pull-up exercises. "Buskens" unique shape allows for customized weight distribution in the exercises depending on hand placement, as well as optional support from the feet on the ground.

Material: Stainless steel
 Dimensions: H: 1300 W: 2100 D: 2100 (mm)
 Primary training: Arms, core



Trädet

Art 267156

"Trädets" branches consist of three different heights with two different grip thicknesses to accommodate all individuals. Various pulling exercises such as chin-ups and pull-ups are possible, but the shape and distances also invite the use of the branches for monkey bar exercises.

Material: Stainless steel
 Dimensions: H: 2200 W: 1700 D: 1700 (mm)
 Primary training: Arms, back, core



Ekoxen high

Art 267152

The high "Ekoxen" offers various upward pressing exercises for the shoulder area, while also allowing for training of calf and leg muscles by holding the bar at shoulder height for balance and weight. It invites social training as a friend can make it both heavier and lighter by providing weight or relief on the "tail".

Material: Stainless steel & oak
 Dimensions: H: 1520 W: 2400 D: 620 (mm)
 Primary training: Shoulders, legs



Ekoxen low

Art 267151

The design of the low "Ekoxen" is developed to offer the greatest possible variety of leg, back, and pulling exercises. It invites social training as a training partner can make it both heavier or lighter by adding weight or providing assistance on the "tail". Popular exercises include squats and back pulls.

Material: Stainless steel & oak
 Dimensions: H: 1470 W: 2540 D: 620 (mm)
 Primary training: Legs, back, arms

Dungen

Design: Jan Olsson Loftén

A gym series that complements and adds to our original series Gläntan both in form and function. With a related design language and the same high-quality materials, Dungen can either stand on its own and provide a substantial full-body workout for both elite athletes and beginners, or be mixed and matched with the equipment in the Gläntan series to build a larger or custom gym.



Dungen



Barr

Art 277161

The classic bar with regulation Olympic measurements. Well adapted for calisthenics training of the large muscle groups.

Material: Stainless steel
Dimensions: H: 1300 W: 2030 D: 725 (mm)
Primary training: Arms, core, stretching



Dips

Art 277160, 277159

The dip bars come in two different heights, where the higher one also offers a step up from the ground to enable completely free-hanging training. With its V-shaped design, one can choose how wide they want to grip and therefore the weight of the exercise.

Material: Stainless steel
Dimensions: H: 1000/1300 W: 970/990 D: 670/960 (mm)
Primary training: Arms, core



Armgång

Art 277151

Monkey bars, as it is commonly called, is a versatile tool for exercises such as pull-ups, monkey bars, and various core exercises. By working with stainless steel, we have been able to reduce the diameter of the hand grips, which opens up the tool for more user groups than 185 cm tall men with large hands.

Material: Stainless steel
Dimensions: H: 2670 W: 2425 D: 1470 (mm)
Primary training: Arms, core, grip strength



Tornet

Art 277150

The multi-tool in the series with parallel bars, rings, and ropes. A large number of exercises, both for strength training and gymnastics.

Material: Stainless steel
Dimensions: H: 3300 W: 2300 D: 2490 (mm)
Primary training: Arms, core, grip strength



Situps

Art 277153, 277154

One of the most classic and rewarding exercises in training is the traditional sit-up. However, these require a small adjustment for outdoor environments as some may feel unsafe lying on the ground. By coming up a little bit and creating a stable base for the feet, this is a given product in any gym. For a little tougher resistance, we also offer an inclined variant.

Material: Stainless steel & oak
Dimensions: H: 600/900 W: 1770 D: 740 (mm)
Primary training: Core, stretching



Hopstengar

Art 277156, 277157, 277158

To get the heart and lungs going with some quick jumps and steps, these small tools are unbeatable. Available in three different heights to be adapted to the training level and different exercises.

Material: Stainless steel & oak
Dimensions: H: 250/350/450 W: 480 D: 450 (mm)
Primary training: Legs, cardio



Rygglyft

Art 277155

For strengthening training of the core and back without having to lie on the ground, this is a very good complement to the sit-up tools. With different heights on the footrests, it is designed to fit users of different lengths.

Material: Stainless steel & oak
Dimensions: H: 925 W: 1625 D: 1160 (mm)
Primary training: Back



Prispall

Art 277162

The podium functions both as a resting place and as an exercise tool. In addition, it can feel good to stand at the top. A winner for a little while!

Material: Stainless steel & oak
Dimensions: H: 780 W: 2040 D: 820 (mm)
Primary training: Rest, legs, cardio

Dungen



Häckarna

Art 277163, 277162

The hurdles are excellent as obstacles in an obstacle course or as a challenging addition to an outdoor gym.

Material: Stainless steel

Dimensions: H: 840/700 W: 1180/1160 D: 180/150 (mm)

Primary training: Legs, cardio, coordination



Balansgång

Art 277164

Classic balance obstacle where one can challenge oneself and at the same time train balance and coordination.

Material: Stainless steel

Dimensions: H: 170 W: 2040 D: 76 (mm)

Primary training: Balance, coordination



Strå

Design: ODDA Design Studio

The “Strå” series consists of clear silhouettes that interact with the natural design language. An easily placed collection of outdoor furniture that withstands the test of time, both in construction and design.





Chair Art 277123

Chair made of core pine and painted steel.

Material: Coated steel and core pine
 Dimensions: H: 790 W: 490 D: 490 S: 450 (mm)
 Colors: Any RAL Classic color

Stool Art 277125

Stool made of core pine and painted steel.

Material: Coated steel and core pine
 Dimensions: H: 450 W: 450 D: 450 (mm)
 Colors: Any RAL Classic color



Sofa Art 277122

Sofa with backrest made of core pine and painted steel.

Material: Coated steel and core pine
 Dimensions: H: 790 W: 1740 D: 490 (mm)
 Colors: Any RAL Classic color

Table and bench Art 277124, 277121

Table and bench made of core pine and painted steel.

Material: Coated steel and core pine
 Dimensions: H: 730/450 W: 1775/1630 D: 740/450 (mm)
 Colors: Any RAL Classic color



Pergola Art 277120

In courtyards, rooftops, or to create spatiality in parks and open areas, a pergola is unmatched in its simplicity. Through its clear design language and clean lines, the pergola in the Strå series is an easily placed but at the same time very distinctive and welcoming addition to most public environments.

Material: Coated steel and core pine
 Dimensions: H: 2538 W: 2038 D: 2038 (mm)
 Colors: Any RAL Classic color

Vinkeln

Design: Jan Olsson Loftén

In the design work for the Vinkeln series, we aimed to find a lightness in the appearance that still reads as a stable and durable construction. Creating spatiality and allowing light to flow through the products was a cornerstone of the work.





Armchair Art 267202

Armchair made of core pine and painted steel.

Material: Coated steel & core pine
 Dimensions: H: 780 S: 460 D: 440 B: 500 (mm)
 Colors: Any RAL Classic

Chair Art 267203

Chair made of core pine and painted steel.

Material: Coated steel & core pine
 Dimensions: H: 460 S: 460 D: 440 B: 500 (mm)
 Colors: Any RAL Classic



Stool Art 267204

Stool made of core pine and painted steel.

Material: Coated steel & core pine
 Dimensions: H: 460 S: 460 D: 370 B: 500 (mm)
 Colors: Any RAL Classic

Sofa Art 267200

Sofa made of core pine and painted steel.

Material: Coated steel & core pine
 Dimensions: H: 780 S: 460 D: 440 B: 1470 (mm)
 Colors: Any RAL Classic



Table and bench Art 267205, 267201

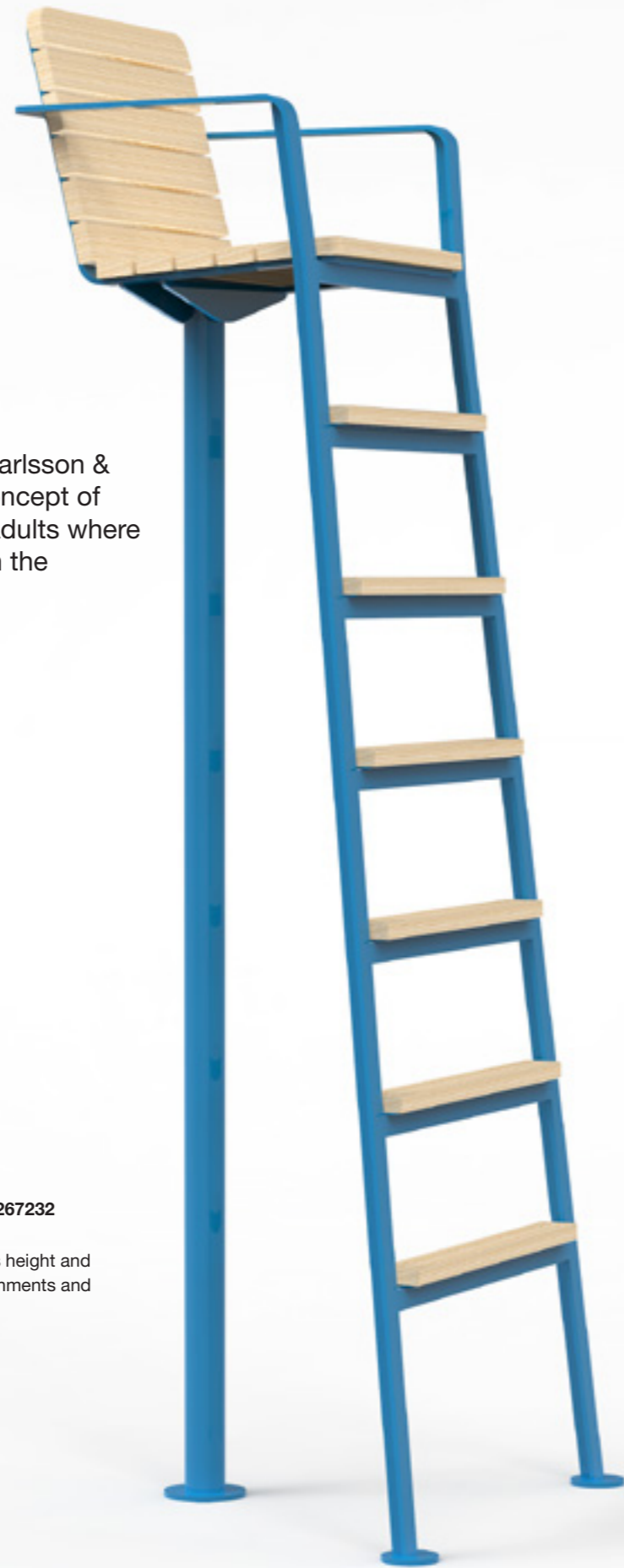
Table and bench made of core pine and painted steel. The table can be delivered in two different lengths to be adapted to tables and chairs with and without armrests.

Material: Lacquered steel & heart pine
 Dimensions: H: 730/460 S: 460 B: 660/370 B: 1100/1440/1350 (mm)
 Colors: Any RAL Classic

Skala

Design: Karlsson & Björk

Based on the chair's clean design, Karlsson & Björk have developed a complete concept of park furniture for both children and adults where playfulness contrasts beautifully with the streamlined expression.



Judges' chair

Art 267232

The perfect viewing spot for the park or beach. With its height and shape, it becomes an obvious eye-catcher in all environments and can of course be used as a judges' chair.

Material: Coated steel & core pine
 Dimensions: H: 2150 B: 775 D: 655 S: 1800 (mm)
 Colors: Any RAL Classic



Chair

Art 267220, 267250

A chair with comfortable wooden seating surfaces. These can also be delivered in child sizes.

Material: Coated steel & core pine
 Dimensions: H: 790/500 S: 450/280 D: 500/340 B: 460/330 (mm)
 Colors: Any RAL Classic



Armchair

Art 267221, 267251

An armchair with comfortable wooden seating surfaces. These can also be delivered in child sizes.

Material: Coated steel & core pine
 Dimensions: H: 790/500 S: 450/280 D: 500/350 B: 460/420 (mm)
 Colors: Any RAL Classic



Sofa 180

Art 267233

A sofa for four to six people in two directions. Can be ordered with or without armrests.

Material: Coated steel & core pine
 Dimensions: H: 790 S: 450 D: 1115 B: 1560 (mm)
 Colors: Any RAL Classic



Recliner with footrest

Art 267237, 267238

A reclined and slightly lower armchair that can be ordered with or without footrest.

Material: Coated steel & core pine
 Dimensions: H: 750 B: 675 D: 620/1110 S: 325 (mm)
 Colors: Any RAL Classic



Sofa

Art 267222, 267252

With wooden seating surfaces for two to three people, the sofa can be ordered with or without armrests. The sofa can also be delivered in child sizes.

Material: Coated steel & core pine
 Dimensions: H: 790/500 S: 450/280 D: 500/350 B: 1560/1100 (mm)
 Colors: Any RAL Classic

Bench

Art 267224, 267256

With wooden seating surfaces for two to three people, the bench can be ordered with or without armrests. The bench can also be delivered in child sizes.

Material: Coated steel & core pine
 Dimensions: H: 650/280 D: 500/250 B: 1440/990 S: 450/280 (mm)
 Colors: Any RAL Classic



Table 440, 560, 820 Art 267260, 267261, 267262

Round tables in painted steel and core pine.

Material: Coated steel & core pine
 Dimensions: O: 440/560/820 H: 650/750/750 (mm)
 Colors: Any RAL Classic



Table

Art 26722601, 267226, 267256

The table is available in two widths adapted for corresponding benches and tables with or without armrests. Can also be ordered in child sizes.

Material: Coated steel & core pine
 Dimensions: H: 730/450 B: 1440/1100/830 D: 660/440 (mm)
 Colors: Any RAL Classic



Solbädd dubbel

Art 267235-1

Sun lounger for lazy days in the sun. Can be ordered with or without armrests.

Material: Coated steel & core pine
 Dimensions: H: 2150 B: 775 D: 655 S: 1800 (mm)
 Colors: Any RAL Classic

Solbädd enkel

Art 267235

Sun lounger for lazy days in the sun. Can be ordered with or without armrests.

Material: Coated steel & core pine
 Dimensions: H: 720 S: 300 D: 1700 B: 1400/1520 (mm)
 Colors: Any RAL Classic

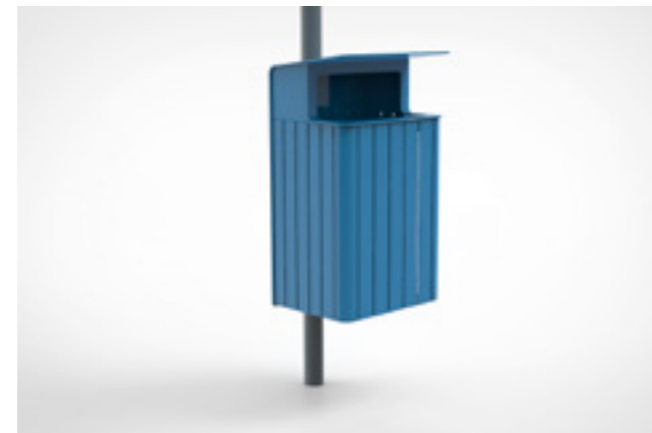


Chess table

Art 267263

Chess table with a game board in stainless steel.

Material: Coated steel, stainless steel and core pine
 Dimensions: H: 750 B: 695 D: 695 (mm)
 Colors: Any RAL Classic



Trash can 140 & 50 L Art 267266, 267264

Trash can 50 L pole Art 267265

Freestanding trash can with concrete foundation and trash can for embedding. Emptied easily with the swiveling sack holder via the opening front.

Trash can for mounting on a pole. Emptied easily with the swiveling sack holder via the opening front.

Material: Coated steel
Dimensions: H: 1000 B: 360/610 D: 360/410
Colors: Any RAL Classic

Material: Coated steel
Dimensions: H: 736 W: 480 D: 245
Colors: Any RAL Classic



Modules for walls and stairs

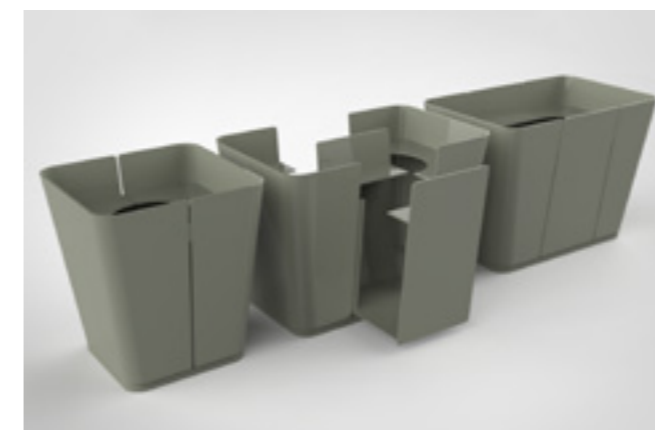
Tables and benches that are delivered for attachment to finished concrete surfaces. Contact us for measurements and more info.

Gabion

Design: PettersonRudberg

A new type of furnishing for urban spaces, where new requirements for safety, function, and aesthetics have been the focus.

The result is easily placed characterful objects for temporary and permanent furnishings in urban environments. When unfilled, they are easy to transport and stackable. When filled with, for example, stones, they function as traffic barriers that can easily be adapted to their surroundings.



Planters Art 277185, 277186

Adaptable planters that can be extended with middle sections of 200 mm.

Material: Coated steel
Dimensions: H: 580 D: 500 W: 500 (extendable)
Colors: Any RAL Classic



Bench Art 277180

The bench can either be attached to the ground or filled with stones. When the bench is filled, it effectively functions as a barrier and obstacle for traffic on, for example, pedestrian streets.

Material: Coated steel & core pine
Dimensions: H: 450 D: 500 W: 1600 S: 450 (mm)
Colors: Any RAL Classic

Skugga

Design: Karlsson & Björk

“Skugga” helps create spatiality in the public environment without completely screening while using light to create a beautiful play of shadows that changes throughout the day.

Skugga standing & lying

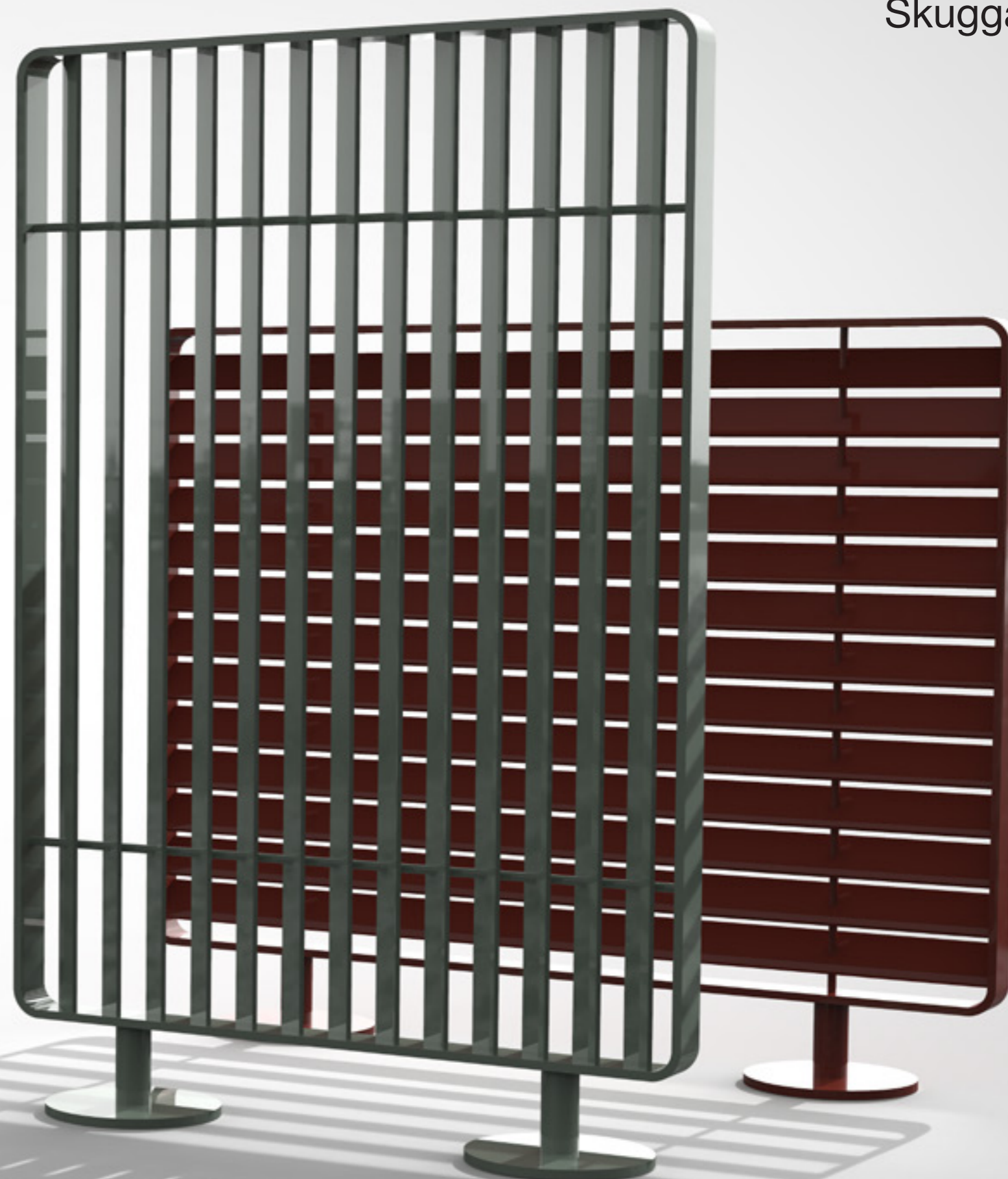
Art 277201, 277202

Screen that provides the opportunity to create space in the outdoor environment. Depending on the angle, it can provide both screening or transparency.

Material: Coated steel

Dimensions: H: 1800/1350 W: 1200/1650 D: 80 (mm)

Colors: Any RAL Classic





Torpet

Design: Jan Olsson Loftén

In the Torpet series, we mimic a three-dimensional coloring book where we want to speak directly to the imagination, childhood's most important asset.

The design is created to encourage movement and activity while leaving room for children to create their own world. By not presenting a ready-made template in bright colors, we want to give power back to the children in their play.

Torpet



Apple Tree

Art 287301

No garden should be without an apple tree.

Material: Stainless steel
Dimensions: H: 1560 W: 915 D: 995 (mm)



Dog House

Art 287303

A dog can be good to have to guard the torp and to scare off the deer.

Material: Stainless steel
Dimensions: H: 785 W: 725 D: 830 (mm)



Gooseberry Bush

Art 2873002

A perfect hiding place for mischievous children.

Material: Stainless steel
Dimensions: H: 725 W: 1490 D: 1665 (mm)



Outhouse

Art 287304

In the outhouse, we can be alone. It can get a little cold on the butt in winter.

Material: Stainless steel
Dimensions: H: 1705 W: 540 D: 1010 (mm)



Main House

Art 287300

In the torp, there is no running water or electricity. Thanks to the fireplace, we can cook and warm ourselves.

Material: Stainless steel
Dimensions: H: 2195 W: 1910 D: 2030 (mm)

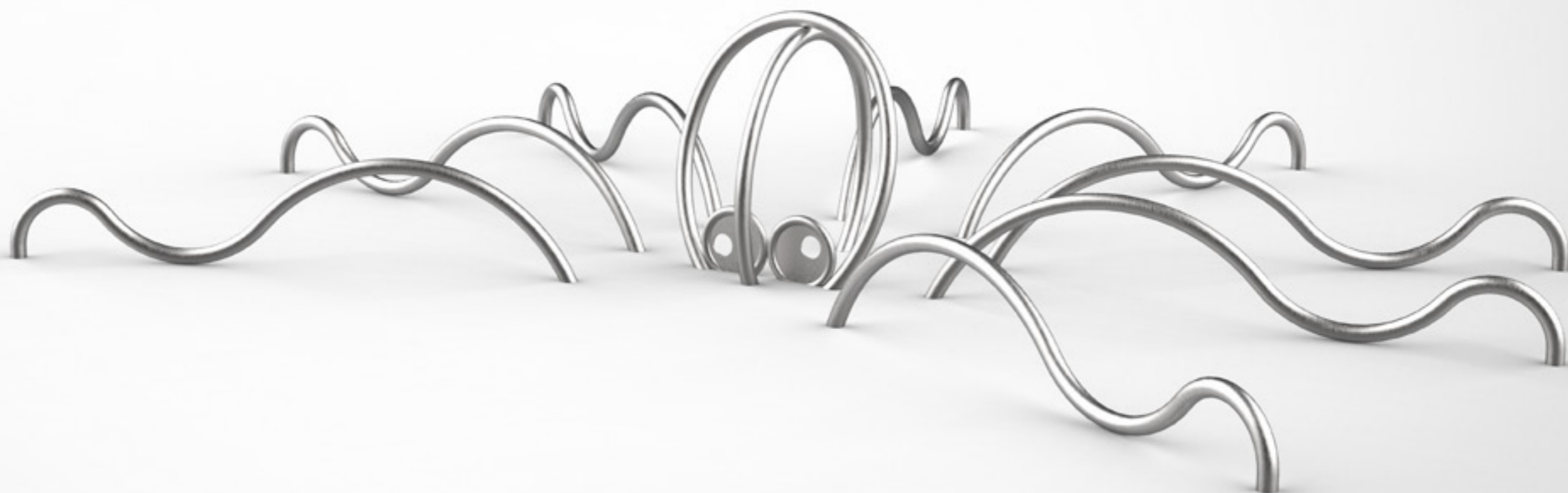


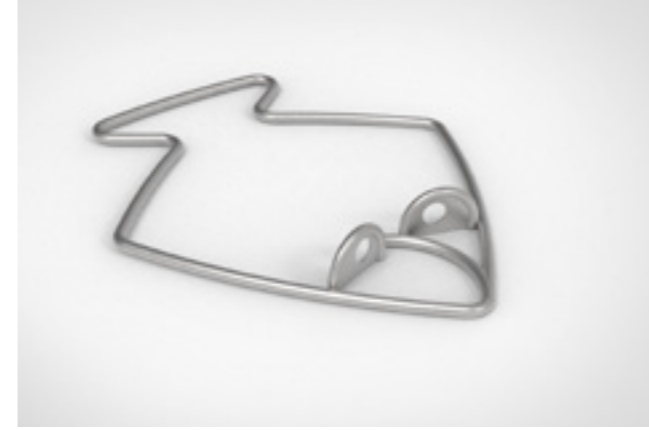
Havet

Design: Jan Olsson Loftén

The sea is a magical world of fascinating animals that hide both in the water and on the bottom.

Through our introduction to life in the sea, we want to inspire children's imagination and develop their motor skills in a fun and easy way.





Turtle Art 287400

Turtles can live for many years, up to 100 years or more. They are also important for the ecosystem because they help control the population of insects and other small animals.

Material: Stainless steel
Dimensions: H: 400 W: 1430 D: 400 (mm)

Clam Art 287401

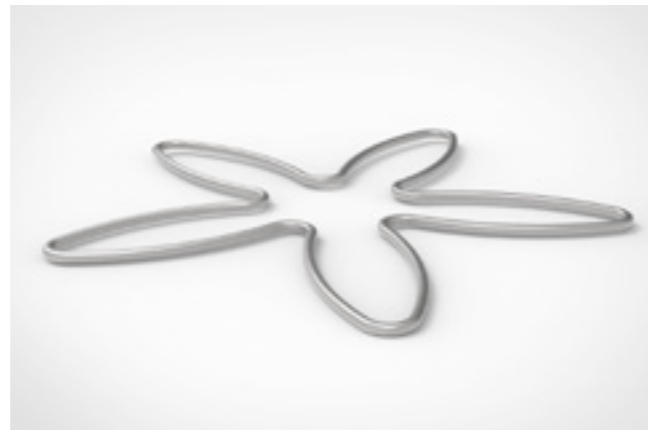
Pearl mussels are mussels that have a small pearl inside the shell, and it is very rare to find one. But if you manage to find one, it's like finding a really expensive diamond.

Material: Stainless steel
Dimensions: H: 300 W: 980 D: 980 (mm)

Flounder Art 287405

Flounder is a bottom-dwelling fish that uses its flat body to blend into the surroundings and avoid predators.

Material: Stainless steel
Dimensions: H: 150 W: 1270 D: 970 (mm)



Shark Fin Art 287402

Sharks have fins that are specially designed to help them swim fast and maneuver in the water. The fins are also crucial for their balance and movement patterns.

Material: Stainless steel
Dimensions: H: 430 W: 450 D: 30 (mm)

Starfish Art 287403

Starfish are bottom-dwelling animals that can be found in all the world's oceans. They are also important in the ecosystem as food for fish and other marine mammals.

Material: Stainless steel
Dimensions: H: 50 W: 1660 D: 1630 (mm)



Octopus Art 287404

Octopuses have a distinctive appearance with a head and a body that is surrounded by tentacles. It can also squirt ink to scare off predators or to camouflage itself.

Material: Stainless steel
Dimensions: H: 480 W: 2910 D: 2790 (mm)



Signs

Art 267159, 267160

The signs are designed according to each individual customer's wishes and the unique location. Here is room for welcome information, suggestions for training programs, and training instructions.

Material: Stainless steel

Dimensions: H: 1700/1150 W: 900/280 D: 330/80 (mm)



Bike Racks

Art 267161, 267163, 267165

The bike racks come in three different sizes with space for 2-4 bikes per rack. They are designed to place all bikes in the most space-efficient way possible with the ability to lock both the wheels and the frame.

Material: Stainless steel

Dimensions: H: 570 W: 910//800/400 B: 450/230/50 (mm)



With design, function,
and the environment in
focus, we strive to
beautify the public space

glantadesign.com

GLÄNTA Design | Kvarholmsvägen 77 | 131 31 Nacka | Sweden
www.glantadesign.com | info@glantadesign.com
[@glantadesign](#)