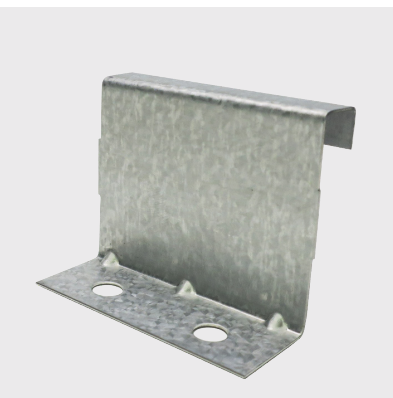
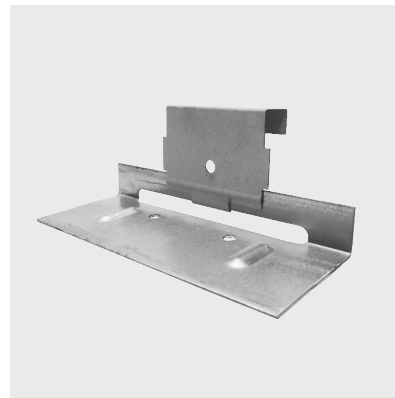




**Sheffield Metals  
International**

A MAZZELLA COMPANY



# ENGINEERED

## CLIP AND FASTENER GUIDE

# WELCOME!

---

Welcome to Sheffield Metals' guide for choosing the right clips and fasteners for our engineered systems. Figuring out which clips and fasteners to use for your metal roofing project can be confusing, but we're here to help make it simple.

In this guide, you'll find straightforward instructions to match your panel profile and project needs, ensuring you get the job done right.

## HOW TO USE THE GUIDE

This guide outlines the correct clips and fasteners to use for specific Sheffield Metals engineered systems. To use it, find your engineered panel profile and identify the materials and decking you'll be using for your project. From there, you'll find information on the exact clips or fasteners to use.

**These pertinent details include specifics such as:**



### **CLIP TYPE AND GAUGE**

The unique type of clip and the metal thickness required for that profile.

---



### **BOX QUANTITY**

The number of clips included in each box shipment.

---



### **PART NUMBER**

The corresponding code to help you find the exact product you need from Sheffield Metals.

---



### **STAINLESS STEEL REQUIREMENTS**

Any specific types of projects that may require usage of stainless steel clips.

Selecting the right accessories is essential for the success and longevity of your roofing project, and we hope this guide helps you tackle it with confidence. Your roofing project's success is our priority, and we're here to support you every step of the way.

If you have any further questions or need assistance, visit our website at [sheffieldmetals.com](https://sheffieldmetals.com) for more information about our engineered systems, panel profiles, clips, and fasteners.

# SMI 1.0 MS

---



## STEEL PANELS OVER PLYWOOD

**90/SINGLE LOCK**

Clip Type & GA: Fixed, 24 GA

---

Box Quantity: 1000

---

Part Number: XCMF10024CNUSM

# SMI 1.5 450 SL

---



## STEEL PANELS OVER PLYWOOD

Clip Type & GA: Fixed 2-Hole, 24 GA

---

Box Quantity: 800

---

Part Number: XCSL15024CNUSM-1

# SMI 1.5 SL 550

---



## STEEL PANELS OVER PLYWOOD

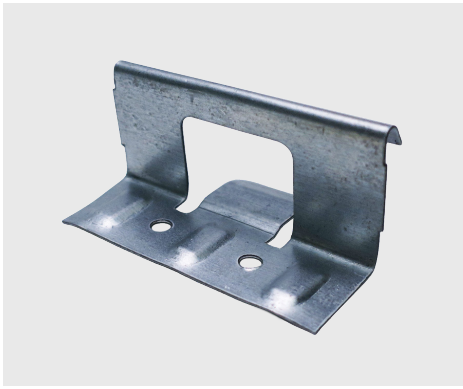
Clip Type & GA: Fixed/SnapLock, 20 GA

---

Box Quantity: 500

---

Part Number: XCSL15020CSESF



## ALUMINUM PANELS OVER PLYWOOD, METAL DECK WITH AND WITHOUT ISO

Clip Type & GA: Fixed/SnapLock HD, 20 GA

Box Quantity: 300

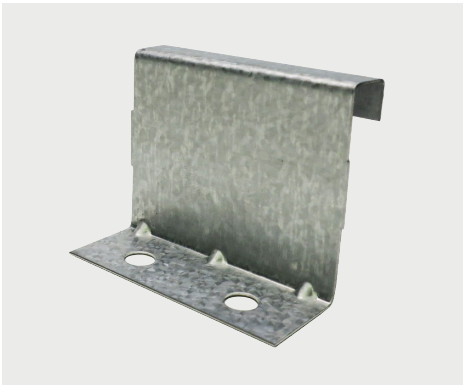
Part Number: XCSL15020CAESM

Stainless Steel Part Number: XCSL15020SAESM

### NOTE

Stainless steel is required for coastal projects within 1500 feet of saltwater.

## SMI 1.5 MS



## STEEL PANELS OVER PLYWOOD

### 90/SINGLE LOCK

Clip Type & GA: Fixed, 24 GA

Box Quantity: 1000

Part Number: XCMFI5024CNUSM



## STEEL PANELS OVER PLYWOOD, METAL DECK WITH & WITHOUT ISO

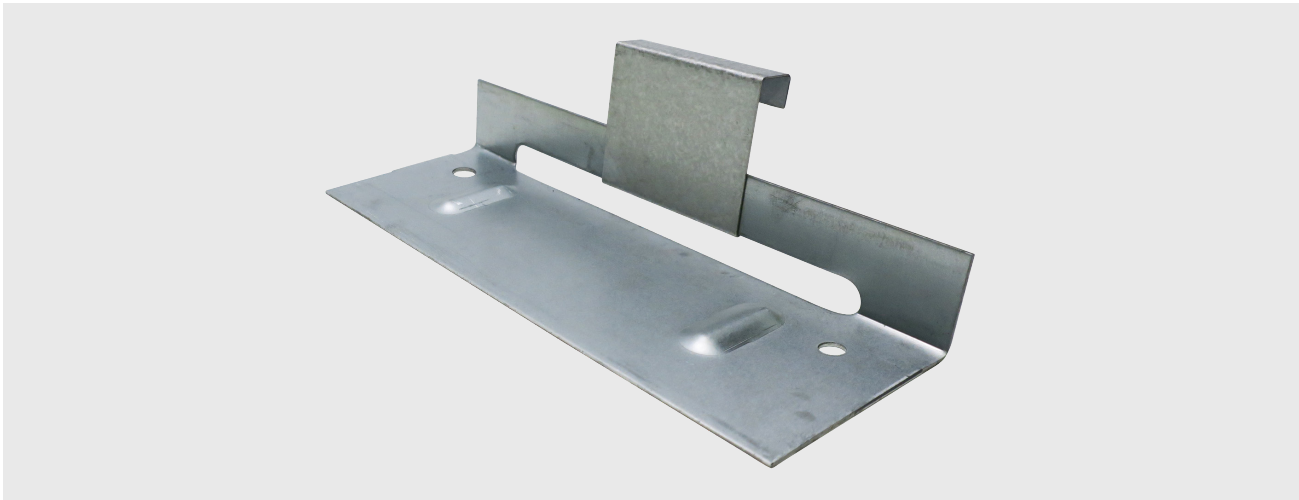
### 180/DOUBLE LOCK

Clip Type & GA: Butterfly, 22 GA Base, 24 GA Tab

Box Quantity: 200

Base Part Number: XCMS15B22CSESF

Tab Part Number: XCMS15T24CSESF



## ALUMINUM PANELS OVER PLYWOOD

**180/DOUBLE LOCK**

**Clip Type & GA:** Expansion, 18 GA Base, 24 GA Tab

**Box Quantity:** 250

**Part Number:** XCMS15024CAESM

**Stainless Steel Part Number:** XCMS15024SAESM

### NOTE

Stainless steel is required for coastal projects within 1500 feet of saltwater.



## ALUMINUM PANELS OVER METAL DECK WITH & WITHOUT ISO

**180/DOUBLE LOCK**

**Clip Type & GA:** Expansion, 18 GA Base, 24 GA Tab

**Box Quantity:** 250

**Part Number:** XCMS15024CAESM-1

**Stainless Steel Part Number:** XCMS15024SAESM-1

### NOTE

Stainless steel is required for coastal projects within 1500 feet of saltwater.

# SMI 1.75 SL

---



## STEEL PANELS OVER PLYWOOD, METAL DECK WITH & WITHOUT ISO

**Clip Type & GA:** Fixed/SnapLock, 18 GA

---

**Box Quantity:** 250

---

**Part Number:** XCSL17518CSESF

---



## ALUMINUM PANELS OVER PLYWOOD, METAL DECK WITH & WITHOUT ISO

**Clip Type & GA:** Fixed/SnapLock, Ultra Length, 18 GA

---

**Box Quantity:** 250

---

**Part Number:** XCSL17518CAESM

---

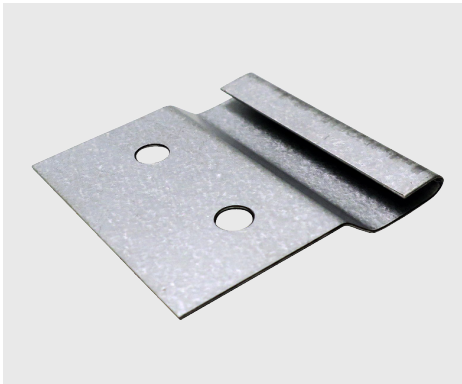
**Stainless Steel Part Number:** XCSL17518SAESM

### NOTE

Stainless steel is required for coastal projects within 1500 feet of saltwater.

# SMI WAV PANEL

---



## STEEL PANELS OVER OPEN FRAMING

Clip Type & GA: Fixed, 24 GA

---

Box Quantity: 1500

---

Part Number: XCNTWAVCLIPSM

# SMI 2.0 MS

---



## STEEL PANELS OVER PLYWOOD

**90/SINGLE LOCK**

Clip Type & GA: Fixed, 24 GA

---

Box Quantity: 300

---

Part Number: XCMF20024CNUMS



## STEEL PANELS OVER PLYWOOD, METAL DECK WITH & WITHOUT ISO

**180/DOUBLE LOCK**

Clip Type & GA: Butterfly, 18 GA Base, 22 GA Tab

---

Box Quantity: 150

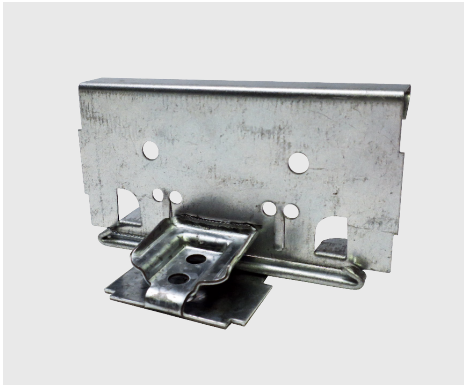
---

Base Part Number: XCMS20B18CESF

---

Tab Part Number: XCMS20T22CSESF





## STEEL PANELS OVER OPEN FRAMING

**180/DOUBLE LOCK**

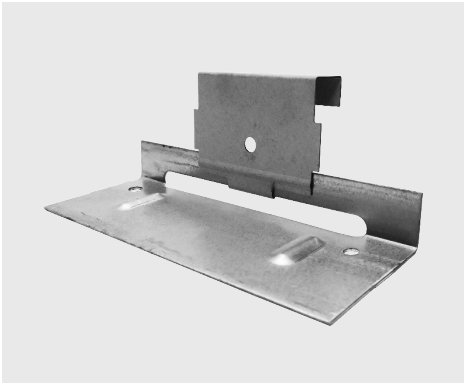
Clip Type & GA: Float, 16 GA Base, 22 GA Tab

---

Box Quantity: 100

---

Part Number: XCMS20022CSESF



## ALUMINUM PANELS OVER PLYWOOD

**180/DOUBLE LOCK**

Clip Type & GA: Expansion, 18 GA Base, 22 GA Tab

---

Box Quantity: 200

---

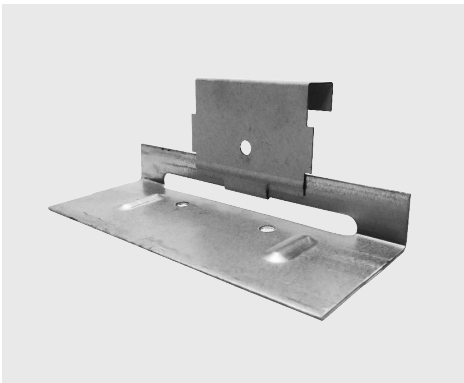
Part Number: XCMS20022CAESM

---

Stainless Steel Part Number: XCMS20022SAESM

### NOTE

Stainless steel is required for coastal projects within 1500 feet of saltwater.



## ALUMINUM PANELS OVER METAL DECK WITH & WITHOUT ISO

**180/DOUBLE LOCK**

Clip Type & GA: Expansion, 18 GA Base, 22 GA Tab

---

Box Quantity: 200

---

Part Number: XCMS20022CAESM-1

---

Stainless Steel Part Number: XCMS20022SAESM-1

### NOTE

Stainless steel is required for coastal projects within 1500 feet of saltwater.



# FASTENERS



## PLYWOOD — ALL PANELS

#10-13 x 1" Pancake Head Screw

Bag Quantity: 250

Part Number: XF10PC100WSCMLFTF

Stainless Steel Part Number: XF10PC100WSSMLFTF



## METAL WITH & WITHOUT ISO — ROOF PANELS

#14-13 Pancake Head DP1

Bag Quantity: 250

Sizes: 1.5" – 9"

Size	Part Number	Stainless Steel Part Number
1.5"	XF14PC150CD1MLFTF	XF14PC150SD1MLFTF
2"	XF14PC200CD1MLFTF	XF14PC200SD1MLFTF
3"	XF14PC300CD1MLFTF	XF14PC300SD1MLFTF
4"	XF14PC400CD1MLFTF	XF14PC400SD1MLFTF
5"	XF14PC500CD1MLFTF	XF14PC500SD1MLFTF
6"	XF14PC600CD1MLFTF	XF14PC600SD1MLFTF
7"	XF14PC700CD1MLFTF	XF14PC700SD1MLFTF
8"	XF14PC800CD1MLFTF	XF14PC800SD1MLFTF
9"	XF14PC900CD1MLFTF	XF14PC900SD1MLFTF

### NOTE

Length of fastener will be determined by ISO thickness. Fastener must penetrate substrate at least 1/2".



## OPEN FRAMING — ROOF PANELS

#1/4-14 x 1.5 " HWH SD2

---

Bag Quantity: 250

---

Part Number: XF14HW150D2CSF



## OPEN FRAMING — WALL FWP

#14-13 x 1.5" Pancake Head DP1

---

Bag Quantity: 250

---

Part Number: XF14PC150CD1MLFTF



## OPEN FRAMING — WALL WAV 4F & 4C

#10-16 x 1" Pancake Head DP3

---

Bag Quantity: 250

---

Part Number: XF10PC100D3CMLFTF



For more information on the engineered systems, panel profiles, clips, or fasteners offered by Sheffield Metals, visit [sheffieldmetals.com](https://www.sheffieldmetals.com).