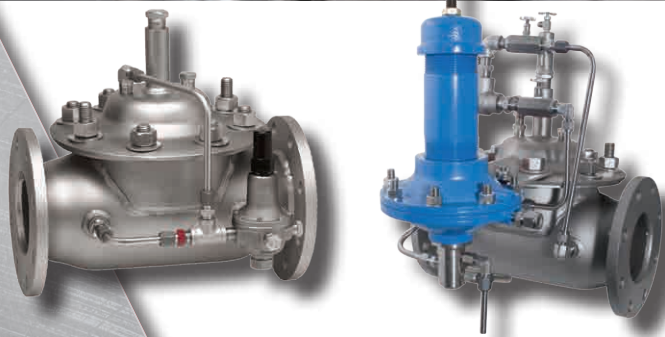


Stainless Star

Stainless Steel Automatic Control Valves



AmesFireWater.com

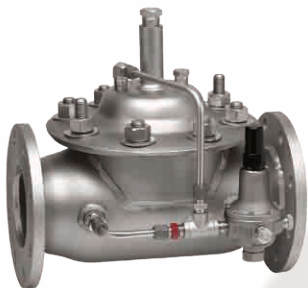

AMES
FIRE & WATERWORKS
A **WATTS** Brand

Choose Stainless Steel!

Ames Fire & Waterworks, A Watts Brand, is a leading manufacturer of fabricated Stainless Steel products, including Automatic Control Valves, Backflow Prevention Assemblies, Pre-Assembled Valve Stations, and Strainers. Since 1910, we have manufactured superior valve products for the Fire Protection, Industrial, and Waterworks markets, and developed a reputation of excellence in innovation and design. We have successfully combined advanced manufacturing procedures, with a high regard for workmanship, to produce valve solutions that meet the challenges of the most rigorous service conditions.

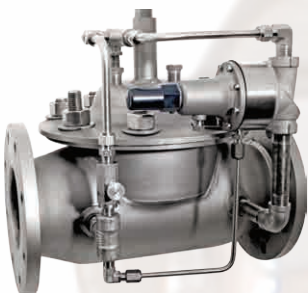
We take pride in offering quality products at competitive prices, with prompt, attentive customer service. Upgrade to Stainless Steel, upgrade to Ames Fire & Waterworks.

Available sizes: 1 1/4"-24"
Material: SS304/SS316L



910 Series – Pressure Reducing Control

Ames Pressure Reducing Valves reduce a high inlet pressure to a constant, lower, outlet pressure across a broad range of flow. Valves may be installed in parallel or series configurations for extended flow range or staged pressure reduction. Downstream pressure setpoint is field adjustable. Common combinations include Pressure Reducing with Hydraulic Check, Solenoid (On-Off), Downstream Surge Protection or upstream Pressure Sustaining Features.



920 Series – Pressure Relief / Sustaining Control

Ames Pressure Relief / Sustaining Valves open when inlet pressure is above and throttle when pressure is below the field adjustable setpoint. Valves maintain desired settings with close pressure tolerances. Many additional combinations are available including Hydraulic Check or Solenoid (On-Off) Features. The Model 925 Surge Anticipation Control Valve protects pumping stations by opening on both high and low pressure waves.



930 Series – Solenoid (On-Off) Control

Ames Solenoid Valves may be configured for either On-Off or Electric Positioning service. Electric Positioning type interface with SCADA systems, and throttle open or closed maintains a desired process variable. Valves may be configured to open, close, or hold-last-position upon loss of electrical signal. Common applications include Pressure, Level or Flow Control, and valves may be equipped with Limit Switches or a 4-20 mA position feedback device.



940 Series – Non-Surge Check Valves

Ames Non-Surge Check Valves are equipped with separate Adjustable Opening and Closing Speed Controls to avoid pipeline surges. Valves close drip-tight upon flow reversal, and may be equipped with Limit Switches or a Position Indicator. Common applications include low head and variable frequency drive pumping systems.



Ames “Stainless Star” Automatic Control Valves are available in Globe or Angle Pattern, Full or Reduced Port and Single or Dual Chamber designs. Each can be equipped with our optional (-16) Mechanical Check Feature, and include the benefits of non-corrosive Stainless Steel construction. Whatever your design parameters, Ames Fire & Waterworks has the right valve for your project.

950 Series – Rate-of-Flow Control

Ames Rate-of-Flow Valves are designed to limit flow rate to an adjustable maximum. By sensing differential pressure across a factory-calibrated orifice plate, the valve accurately throttles to maintain a field adjustable flow rate. Orifice Plate may be installed either downstream or upstream, making it ideal for pressurized pipeline or open reservoir water blending applications. Common combinations include Pressure Reducing, Pressure Sustaining, Hydraulic Check or Solenoid (On-Off) Features.



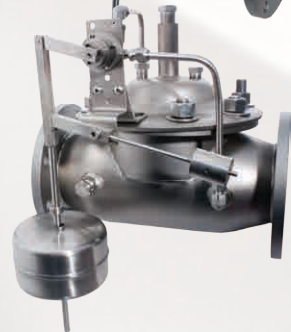
960 Series – Altitude Control

Ames Altitude Valves control the water level in tanks or elevated storage reservoirs. The valve monitors tank head pressure through a field-installed sensing line to open for tank fill and close when desired level is achieved. Valves are equipped with separate Adjustable Opening and Closing Speed Controls. Many variations are available including One Way Flow with Delayed Opening Feature, One Way Flow with Pressure Sustaining Feature and Two Way Flow designs.



970 Series – Float Control

Ames Float Valves are available for either On-Off or Modulating service. On-Off type are controlled by a Float Pilot that is equipped with adjustable low- and high-level stop collars to allow for calculated level draw-down. Modulating type maintain a constant water level proportional with tank draw. Float Pilots may be valve or remote mounted, and level control operation can be reversed for special applications. Additional combinations include Pressure Sustaining and Solenoid (On-Off) Features.



980 Series – Pump Control

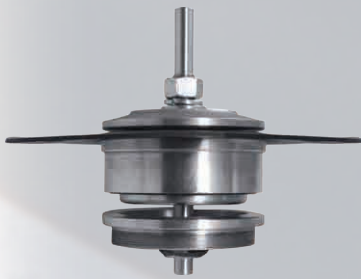
Ames Pump Control Valves are used to minimize surges commonly associated with the starting and stopping of pumps. They include Adjustable Opening and Closing Speed Controls, a Limit Switch for electrical interface and a Hydraulic or Mechanical Check Feature. A variety of Pump Control Valves are available and can be configured with Backpressure, Rate-of-Flow or Pressure Reducing Features.



When it comes to control valves, corrosion problems are something you've come to expect. Expensive repairs, valve replacements, costly system downtime, and compromised water quality all result when valves fail due to corrosion.



Reduce your corrosion headaches with Ames Fire & Waterworks Stainless Steel Automatic Control Valves. Our "Stainless Star" ACVs provide years of corrosion free service without the need for special linings or coatings. Designed with a combination of cutting edge technology and manufacturing efficiency, they feature either 304 or 316 Stainless Steel construction and offer dramatically reduced maintenance requirements. They conform to industry standard lay lengths and meet all applicable AWWA standards.



Ames standard Stainless Steel Disc and Diaphragm Assembly dramatically reduces diaphragm wear, greatly extending valve life. The main valve throttling components (Valve Trim) are 316 Stainless Steel and provide precision control and longer seat life.



Ames optional Polyjet Trim greatly reduces the damaging effects of cavitation by utilizing multi-staged energy dissipating technology. Its proven design is ideally suited for extreme differential pressure situations including Pressure Reducing, Pressure Relief and Reservoir Fill Applications.

- Waterworks
- Industrial Water
- Reverse Osmosis
- Water Reuse
- Brackish Water
- Mining
- Commercial



A WATTS Brand

USA: Control Valves T: (713) 943-0688 • F: (713) 944-9445 • AmesFireWater.com
Canada: T: (905) 332-4090 • F: (905) 332-7068 • AmesFireWater.ca
Latin America: T: (52) 81-1001-8600 • F: (52) 81-8000-7091 • AmesFireWater.com