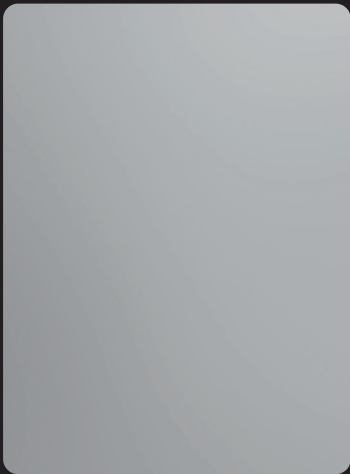


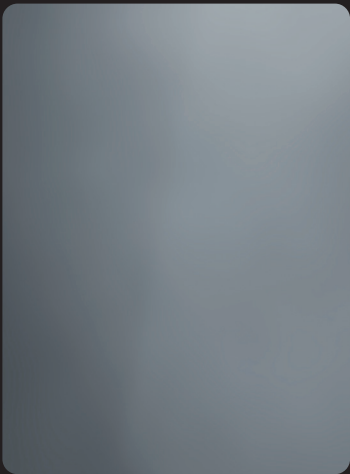
Metalli Finiture Colori

Elysium offre una accurata selezione di metalli e una vasta gamma di finiture e rivestimenti cromatici, che garantiscono tanto un'estetica unica quanto prestazioni eccellenti. Poliestere, superpoliestere, PVDF e l'innovativo rivestimento a doppia tonalità, sono le tipologie di verniciatura del metallo proposte.

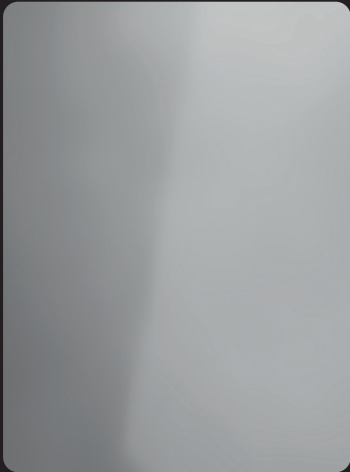
Metalli



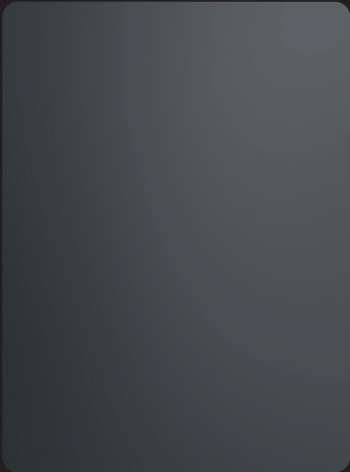
ALLUMINIO



ACCIAIO



ACCIAIO INOX



ZINCO-TITANIO



RAME

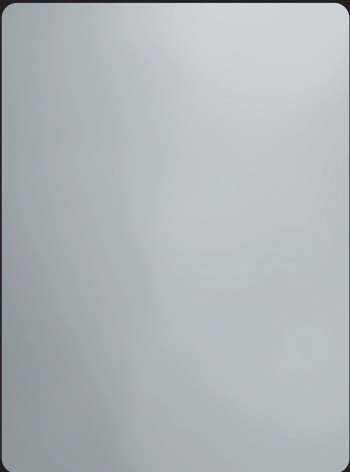
Finiture



GOFFRATO IN ALLUMINIO



ALUZINC IN ACCAIO



NATURALE IN ALLUMINIO

Colori

Tradizione Italiana



RAL 8019

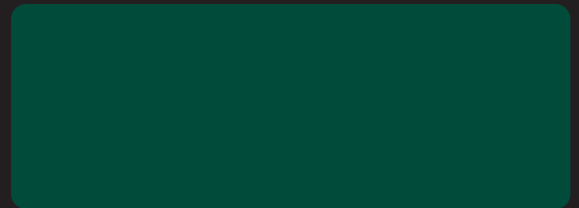


RAL 3009

Toni della tradizione



RAL 6021



RAL 6005

Bauhaus Revival

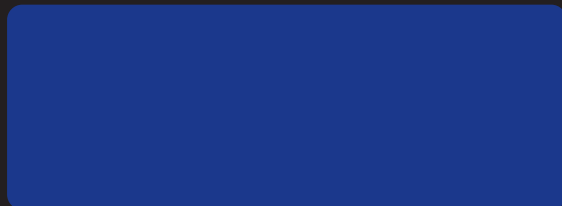


RAL 1004

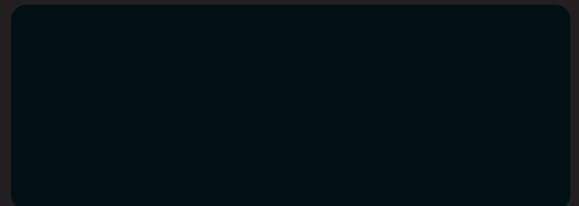


RAL 3020

Toni audaci

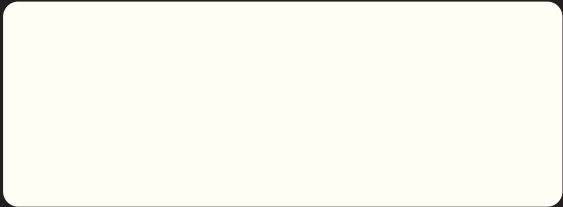


RAL 5002

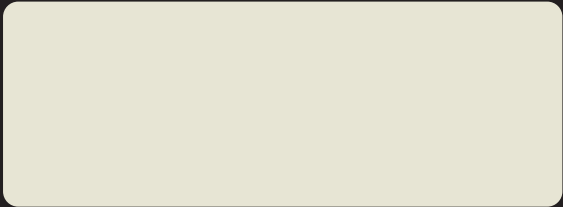


RAL 9005

Natural
Chic



RAL 9010



RAL 9002



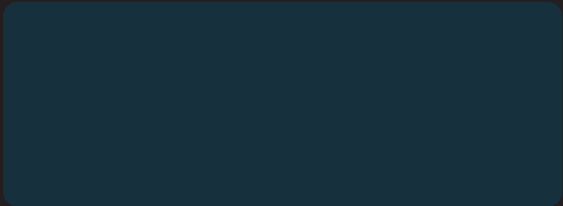
RAL 9006



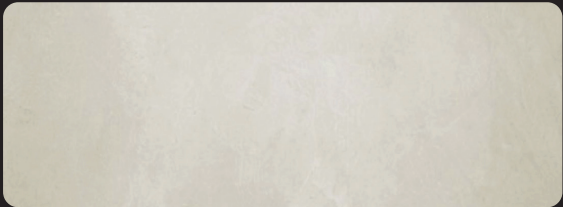
RAL 7037



RAL 7012



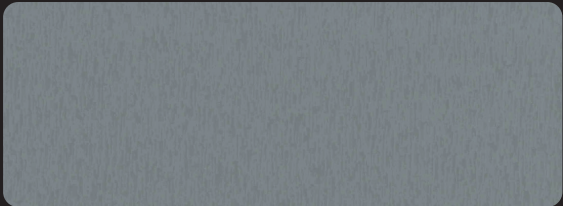
RAL 7016



E-PEARL



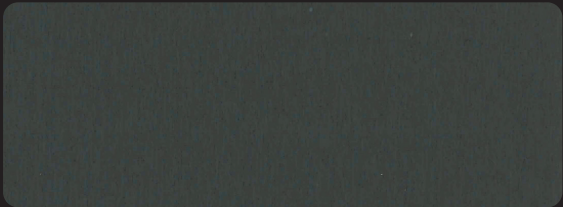
E-SAND



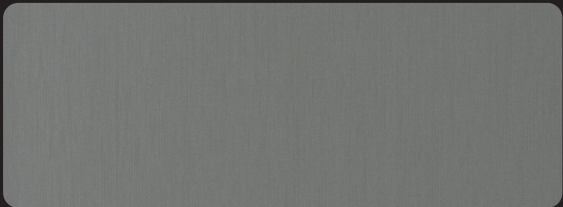
E-MEDIUM GREY



E-BROWN



E-DARK GREY



ZT-QUARTZ



ZT-ANTHRA



ZT-GREEN



ZT-COPPER

Toni Moderni

Toni opachi
Velvet Touch

Collezione Zinc
Elegance

Metallic Elegance



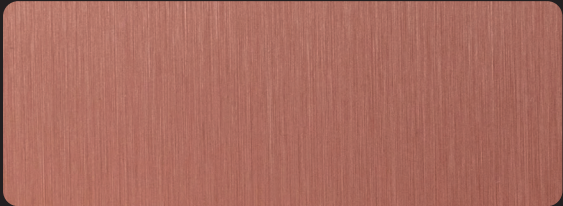
ANODIZED BRUSHED



CHAMPAGNE BRUSHED



GOLD BRUSHED



RED COPPER BRUSHED



PALE UMBER BRUSHED



UMBER BRUSHED



GREEN BLUE



WHITE GREEN



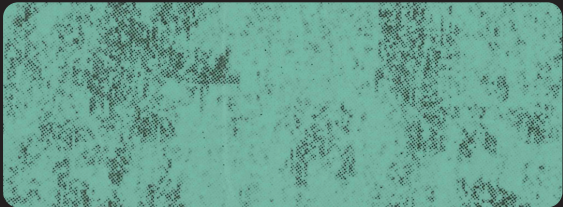
WHITE SILVER



WHITE GOLD



CORTEN RUST



OXIDE COPPER

Toni organici

Toni duali

Oxide Look

Metalli

<div></div> Alluminio	<div></div> Acciaio inox
<div></div> Acciaio	<div></div> Zinco-titanio
	<div></div> Rame

Finiture

<div></div> Goffrato	in Alluminio
<div></div> Aluzinc	in Acciaio
<div></div> Naturale	in Alluminio

Tabella Colori

Tradizione Italiana

Toni della tradizione	<div></div> RAL 8019	<div></div> RAL 3009	<div></div> RAL 6021	<div></div> RAL 6005	<div></div>	<div></div>	<div></div> ACCIAIO <div></div> ALLUMINIO <div></div> MO.
-----------------------	----------------------	----------------------	----------------------	----------------------	-------------	-------------	---

Bauhaus Revival

Toni audaci	<div></div> RAL 1004	<div></div> RAL 3020	<div></div> RAL 5002	<div></div> RAL 9005	<div></div>	<div></div>	<div></div> ACCIAIO <div></div> ALLUMINIO <div></div> MO.
-------------	----------------------	----------------------	----------------------	----------------------	-------------	-------------	---

Natural Chic

Toni Moderni	<div></div> RAL 9010	<div></div> RAL 9002	<div></div> RAL 9006	<div></div> RAL 7037	<div></div> RAL 7012	<div></div> RAL 7016	<div></div> ACCIAIO <div></div> ALLUMINIO <div></div> MO.
Toni opachi Velvet Touch	<div></div> E-PEARL	<div></div> E-SAND	<div></div> E-MEDIUM GREY	<div></div> E-BROWN	<div></div> E-DARK GREY	<div></div>	<div></div> ACCIAIO <div></div> ALLUMINIO <div></div> MO.
Collezione Zinc Elegance	<div></div> ZT-QUARTZ	<div></div> ZT-ANTHRA	<div></div> ZT-GREEN	<div></div> ZT-COPPER	<div></div>	<div></div>	<div></div> ACCIAIO <div></div> ALLUMINIO <div></div> MO.

Metallic Elegance

Toni organici	<div></div> ANODIZED BRUSHED	<div></div> CHAMPAGNE BRUSHED	<div></div> GOLD BRUSHED	<div></div> RED COPPER BRUSHED	<div></div> PALE UMBER BRUSHED	<div></div> UMBER BRUSHED	<div></div> ACCIAIO <div></div> ALLUMINIO <div></div> MO.
Toni duali	<div></div> GREEN BLUE	<div></div> WHITE GREEN	<div></div> WHITE SILVER	<div></div> WHITE GOLD	<div></div>	<div></div>	<div></div> ACCIAIO <div></div> ALLUMINIO <div></div> MO.
Oxide Look	<div></div> CORTEN RUST	<div></div> OXIDE COPPER	<div></div>	<div></div>	<div></div>	<div></div>	<div></div> ACCIAIO <div></div> ALLUMINIO <div></div> MO.

Didascalia: Disponibile Non disponibile MO. Quantità minima d'ordine richiesta MO. Quantità minima d'ordine non richiesta

Le immagini, i colori e le tonalità mostrati in questo catalogo sono puramente illustrativi e potrebbero differire dai campioni reali. Consigliamo di consultare i campioni fisici per una decisione più accurata.

ALL COVERED

ELYSIUM SRL ©2024

VIA EDISON 21
35010 CADONEGHE (PD)
ITALIA

E INFO@ELYSIUMGROUP.IT
P +39 049 7388340

WWW.ELYSIUMGROUP.IT

Elysium
