



# OverWatch<sup>®</sup>

Direct In-Line Pump System



Breakthrough technology designed to lift influent from the point of entry, **eliminating the wet well.**



INDUSTRIAL  
FLOW  
SOLUTIONS<sup>™</sup>

[www.flowsolutions.com](http://www.flowsolutions.com)

# What if you could **ELIMINATE** the Wet Well ?

OverWatch® Direct In-Line Pump System by Industrial Flow Solutions™ eliminates the need for a traditional wet well with a cleaner, more efficient direct in-line design. By pumping directly from the point of entry, OverWatch eliminates wastewater retention, prevents odors, reduces maintenance, and enhances operator safety. In addition, the system is designed to adapt seamlessly to variable flow conditions. Its rugged stainless-steel construction resists corrosion in harsh environments, delivering long-term reliability for municipal, industrial, and commercial applications.



## Eliminates the Wet Well

- Creates **SAFER** working & living conditions
- **REDUCES** environmental impact
- Allows for a smaller footprint

## Self-Monitoring

- **SAVES** time and money
- **EXTENDS** equipment life span

## Non-Clog

- Drastically **REDUCES** maintenance
- Optional patented DIPCUT® Impeller combines vortex & shredding capability



# Pump Features

Optional flow meter

## Motor Options:

- Immersible IP67 (standard)
- CSA IP65
- Explosion Proof IP65
- CE IE2 and IE3

Swing check valve

Branch isolation valve

## Impeller Options:

- Patented DIPCUT® for self-cleaning operation, optional for select models up to 18.5 kW (25 HP)
- Vortex
- High Efficiency

\*Stainless Steel (SS) components:  
304 SS standard / 316 SS optional

\*Main isolation knife gate valve  
Cast iron body, SS knife  
(Not pictured: Discharge isolation knife valve)

\*Optional SS wall flange  
supplied for easy installation

\*Common SS body  
with integral flapper valve  
(Separate discharges available)

\*SS liquid level sensor

Clean out plate

## Available Impellers

Patented DIPCUT®

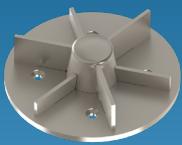


Pumping

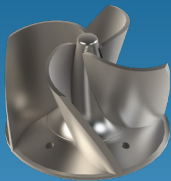


Shredding

Vortex



High Efficiency



## Control Panel Capabilities:

Standard Panel:

- VFD Keypad Control Panel

DERAGGERPro™ Optional:

- SCADA-ready; MODBUS/BACnet configuration
- VFD-agnostic offers flexibility in design
- Optional remote monitoring via mobile device (requires Tagger)
- Live pump status, 170+ time-stamped events, full fault history, and performance metrics to reduce downtime and provide actionable insights

Custom Options Available.

DERAGGERPro™ Control Panel  
with touchscreen HMI controller  
featuring a high-resolution,  
user-friendly display. (Optional)

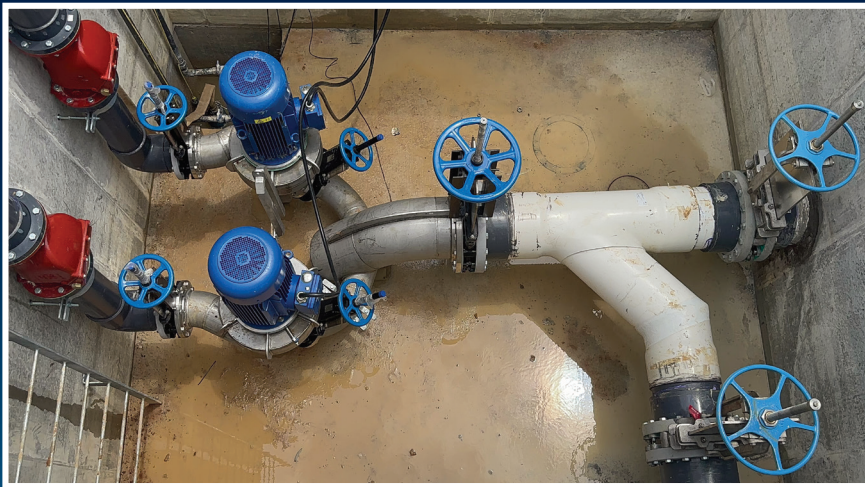


# Configurations

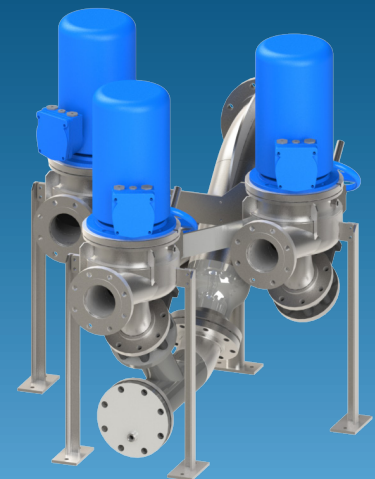
## Duplex



## Duplex Dual Discharge



## Triplex



# Industries & Applications

## Municipal

Collection Networks & Wastewater Treatment Facilities

- Sewage & solids handling
- Stormwater management
- Wastewater
- Lift / Pump stations



Scan to Read Case Study



## Industrial

Food & Beverage and Pharmaceutical Processing

- High temperature wash-down
- Clean in Place (CIP)
- Fats, Oils, Greases (FOG)
- Solids handling



Scan to Read Case Study



## Commercial

Hotels, Hospitals, Correctional Facilities, Universities & Residential Complexes

- Stormwater management
- Wastewater
- Boiler condensate handling
- Solids handling



Scan to Read Case Study



# Technical Data

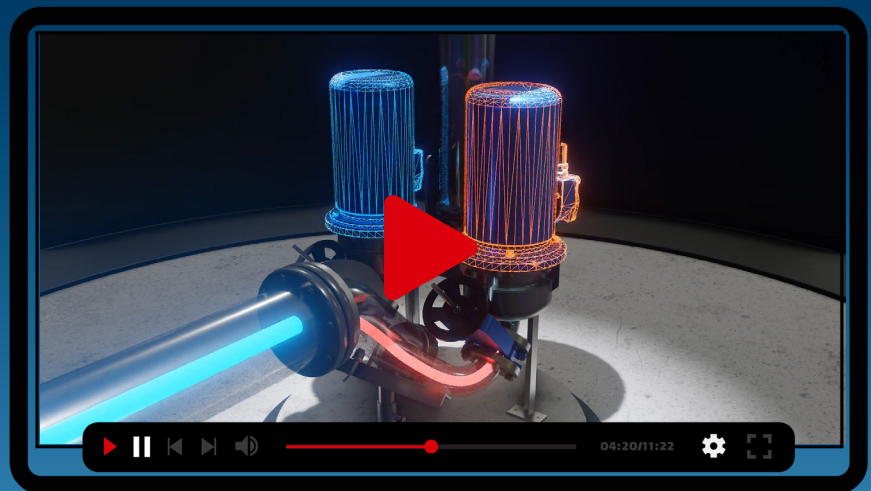
Model	Pole	HP	Kw	Max Flow GPM / m3/h	Max Head ft / m	Inlet in / mm	Outlet in / mm	Max Solids in / mm
OW11/2VV	2	2 / 3	1.5 / 2.2	140 / 32	51 / 16	5 / 125	3 / 80	2 / 50
OW11/4VV	4	2	1.5	130 / 30	19 / 6	5 / 125	3 / 80	2 / 50
OW11H/2VV	2	5.4	4	120 / 27	80 / 24	5 / 125	3 / 80	2 / 50
OW21/4VV	4	3 / 4 / 5.4	2.2 / 3 / 4	320 / 73	46 / 14	6 / 150	4 / 100	2.5 / 63
OW28/4VV	4	3	2.2	245 / 56	44 / 13	6 / 150	4 / 100	3 / 76
OW31/2VV	2	7.4 / 10.1	5.5 / 7.5	280 / 64	86 / 26	6 / 150	4 / 100	3 / 76
OW31/4VV	4	3 / 4 / 5.4 / 7.4	2.2 / 3 / 4 / 5.5	527 / 120	60 / 18	6 / 150	4 / 100	3 / 76
OW31R/2VV	2	14.7 / 20.1 / 24.8	11 / 15 / 18.5	440 / 100	140 / 43	6 / 150	4 / 100	3 / 76
OW61/4VV	4	7.4 / 10.1	5.5 / 7.5	570 / 130	66 / 20	6 / 150	4 / 100	3 / 76
OW61R/4VV	4	14.8	11	672 / 2543	66 / 20	6 / 150	4 / 100	3 / 76
OW61H/2VV	2	29.5 / 40.2 / 49.6 / 60.3	22 / 30 / 37 / 45	455 / 103	379 / 116	6 / 150	4 / 100	3 / 76
OW61HR/2VV	2	73.7 / 100.5	55 / 75	600 / 136	265 / 81	6 / 150	4 / 100	3 / 76
OW101/4VV	4	7.4 / 10.1	5.5 / 7.5	550 / 125	68 / 21	8 / 200	6 / 150	4 / 101
OW101R/4VV	4	14.7 / 20.1	11 / 15	845 / 192	68 / 21	8 / 200	6 / 150	4 / 101
OW101/6VV	6	4 / 5.4 / 7.4	3 / 4 / 5.5	616 / 140	33 / 10	8 / 200	6 / 150	4 / 101
OW101H/4VV	4	24.8 / 29.5 / 40.2 / 49.6 / 60.3 / 73.7	18.5 / 22 / 30 / 37 / 45 / 55	820 / 186	172 / 52	8 / 200	6 / 150	4 / 101
OW151/4VV	4	24.8 / 29.5 / 40.2 / 49.6 / 60.3 / 73.7	18.5 / 22 / 30 / 37 / 45 / 55	1588 / 361	165 / 50	12 / 300	8 / 200	6 / 152
OW151/6VV	6	20.1 / 24.8 / 29.5 / 40.2 / 49.6	18.5 / 22 / 30 / 37	2183 / 8262	85 / 26	12 / 300	8 / 200	6 / 152

Capacities up to 200 HP (150 kW), 5,000 GPM (1,136 m3/h), 400 ft (122 m) of head.  
Consult an Applications Engineer to finalize your design. Custom options available.

## Overview Video



Scan the QR code to watch this overview highlighting the innovative design, key features, and benefits of OverWatch® including greater efficiency, reduced maintenance, and improved reliability.



INDUSTRIAL  
FLOW  
SOLUTIONS™

104 John W Murphy Drive  
New Haven, CT 06513  
Tel: (860) 631-3618  
sales@flowsolutions.com  
www.flowsolutions.com

Distributor: