

Internorm® WALL CONNECTION DETAIL

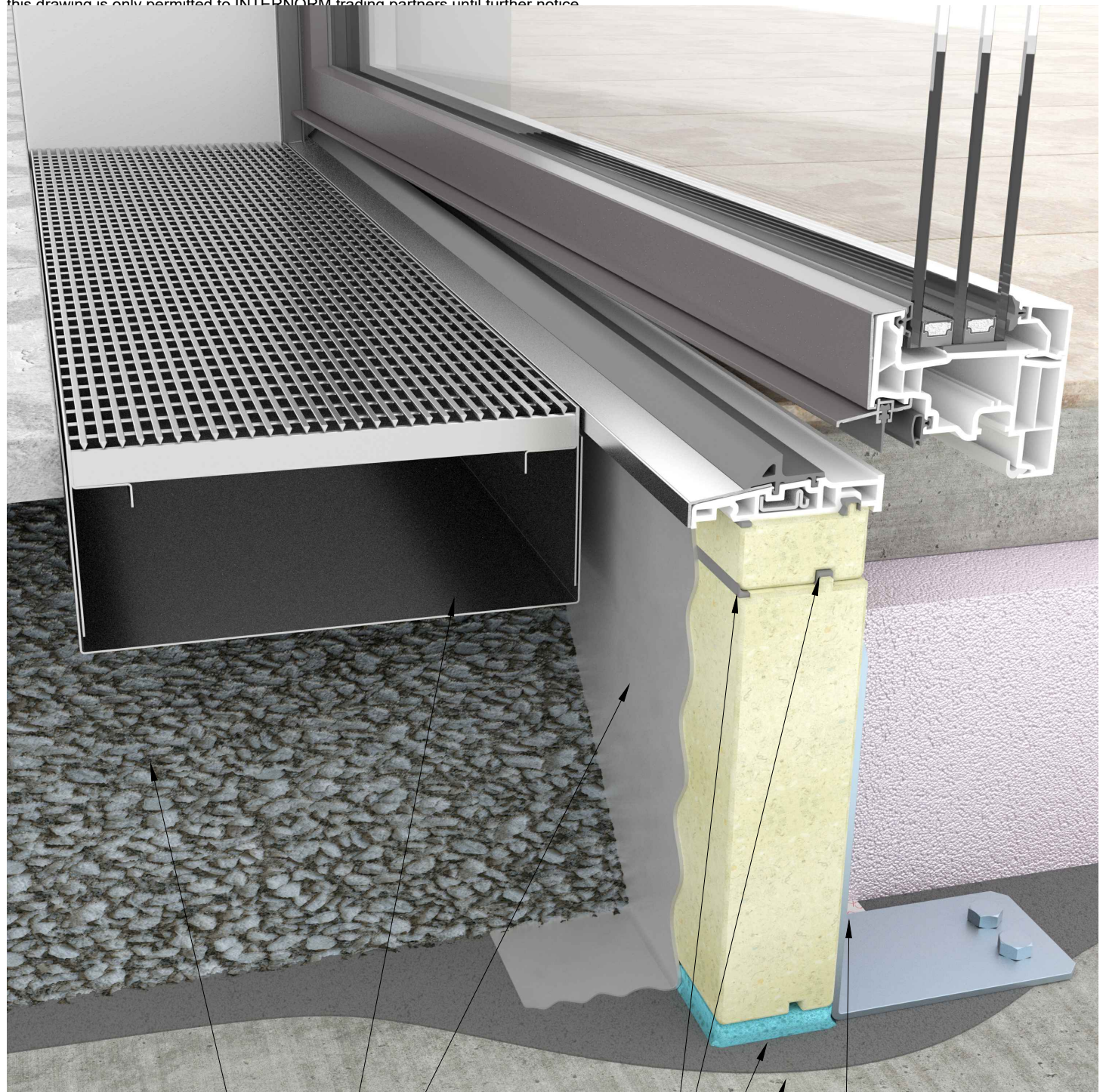
M 3D

Rev. 03

Date 09.11.2022

02C1_KF410_thresholddetail

Attention!! This wall connection detail is provided free of charge by INTERNORM as an exemplary representation, whereby liability for individual cases is excluded. Use is only permitted if the assertion of claims for compensation due to incorrectness or incompleteness is waived. Consent is given through use. For the execution, the real conditions must be taken into account and the connection planning must be coordinated accordingly. The connection planning are planning according to the austrian standards. For the execution take into account the applicable standards in your country. The right to use this drawing is only permitted to INTERNORM trading partners until further notice.



finished flooring
gravel bulk

drainage

drainage system

structural waterproofing

bonding with 1K-PU

packers insulation
area

structural waterproofing
(single layer)

finished flooring
screed
insulation

air tightness area

Internorm® WALL CONNECTION DETAIL

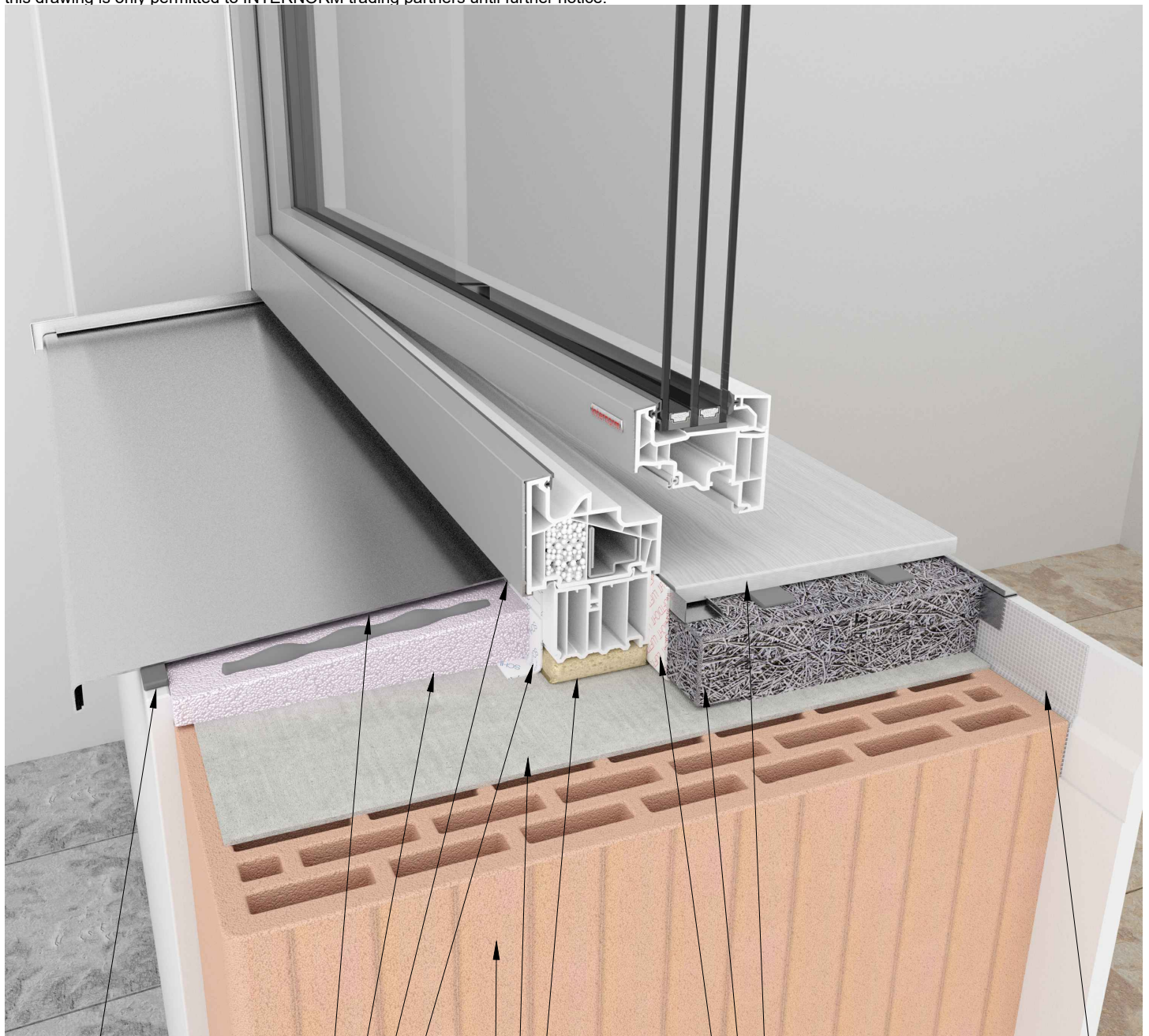
M 3D

Rev. 03

Date 09.11.2022

02C2_brick_KF410_detail windowsill Helopal RAG2

Attention!! This wall connection detail is provided free of charge by INTERNORM as an exemplary representation, whereby liability for individual cases is excluded. Use is only permitted if the assertion of claims for compensation due to incorrectness or incompleteness is waived. Consent is given through use. For the execution, the real conditions must be taken into account and the connection planning must be coordinated accordingly. The connection planning are planning according to the austrian standards. For the execution take into account the applicable standards in your country. The right to use this drawing is only permitted to INTERNORM trading partners until further notice.



windowsill Fenorm
Aluminium RAG2
decompressed
sealing tape
insulation wedge

pre-compressed
sealing tape
rain tightness area

packers
insulation area
filling

masonry λ
< 0,2

insidewindowsill helopal linea
shadow gap
filling material

reinforcement mesh

air tightness area

Internorm® WALL CONNECTION DETAIL

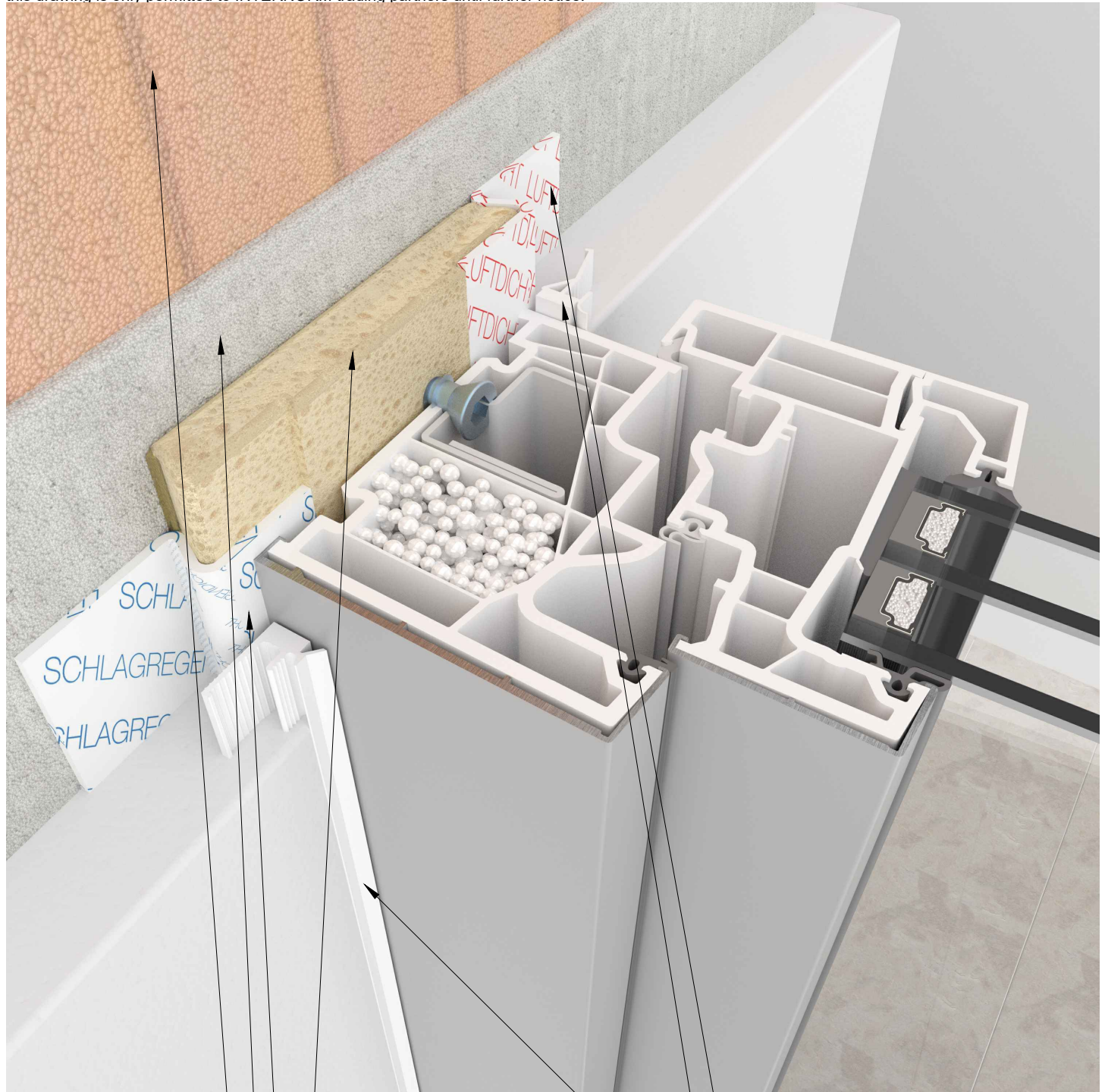
M 3D

Rev. 03

Date 09.11.2022

02C3_brick_KF410_detail at the side without guide rail

Attention!! This wall connection detail is provided free of charge by INTERNORM as an exemplary representation, whereby liability for individual cases is excluded. Use is only permitted if the assertion of claims for compensation due to incorrectness or incompleteness is waived. Consent is given through use. For the execution, the real conditions must be taken into account and the connection planning must be coordinated accordingly. The connection planning are planning according to the austrian standards. For the execution take into account the applicable standards in your country. The right to use this drawing is only permitted to INTERNORM trading partners until further notice.



masonry $\lambda < 0,2$

filling

rain tightness area

insulation area

air tightness area

junction profile

Internorm® WALL CONNECTION DETAIL

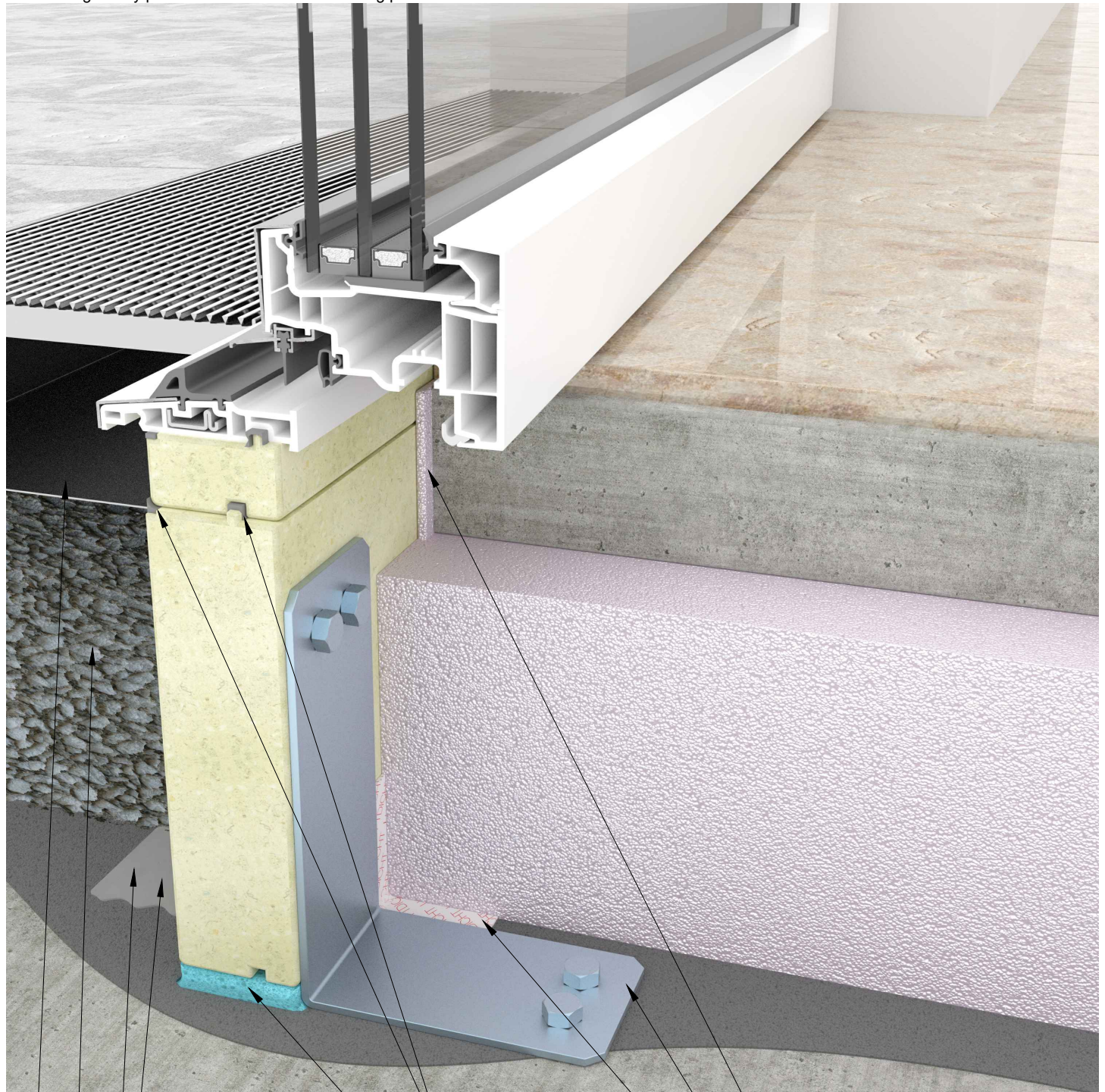
M 3D

Rev. 03

Date 09.11.2022

02C4_KF410_thresholddetail

Attention!! This wall connection detail is provided free of charge by INTERNORM as an exemplary representation, whereby liability for individual cases is excluded. Use is only permitted if the assertion of claims for compensation due to incorrectness or incompleteness is waived. Consent is given through use. For the execution, the real conditions must be taken into account and the connection planning must be coordinated accordingly. The connection planning are planning according to the austrian standards. For the execution take into account the applicable standards in your country. The right to use this drawing is only permitted to INTERNORM trading partners until further notice.



finished flooring
gravel bulk

rain tightness
area

structural
waterproofing
drainage

drainage system

bonding with
1K-PU
packers
insulation
area

stretch marks

structural waterproofing
(single layer)
air tightness area

finished flooring
screed
insulation

Internorm® WALL CONNECTION DETAIL

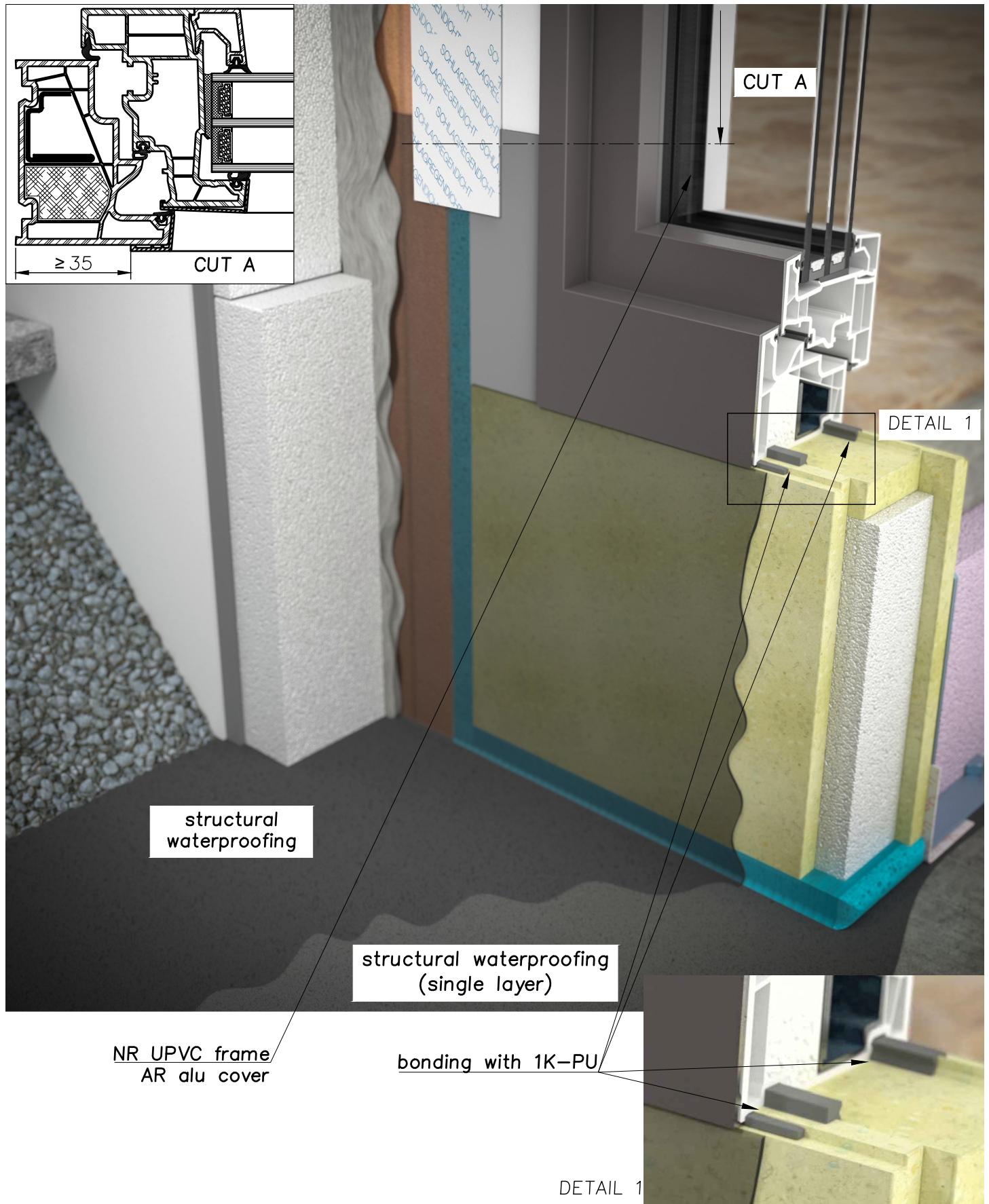
M 3D

Rev. 03

Date 09.11.2022

16C1_KF410_flush connection

Attention!! This wall connection detail is provided free of charge by INTERNORM as an exemplary representation, whereby liability for individual cases is excluded. Use is only permitted if the assertion of claims for compensation due to incorrectness or incompleteness is waived. Consent is given through use. For the execution, the real conditions must be taken into account and the connection planning must be coordinated accordingly. The connection planning are planning according to the austrian standards. For the execution take into account the applicable standards in your country. The right to use this drawing is only permitted to INTERNORM trading partners until further notice.



If changes or adjustments to the building connection are necessary, contact your local technician from INTERNORM!

Reprinting prohibited - Subject to technical changes!

INTERNORM CONNECTION TECHNOLOGY, Ing. Mario Schuster

Internorm® WALL CONNECTION DETAIL

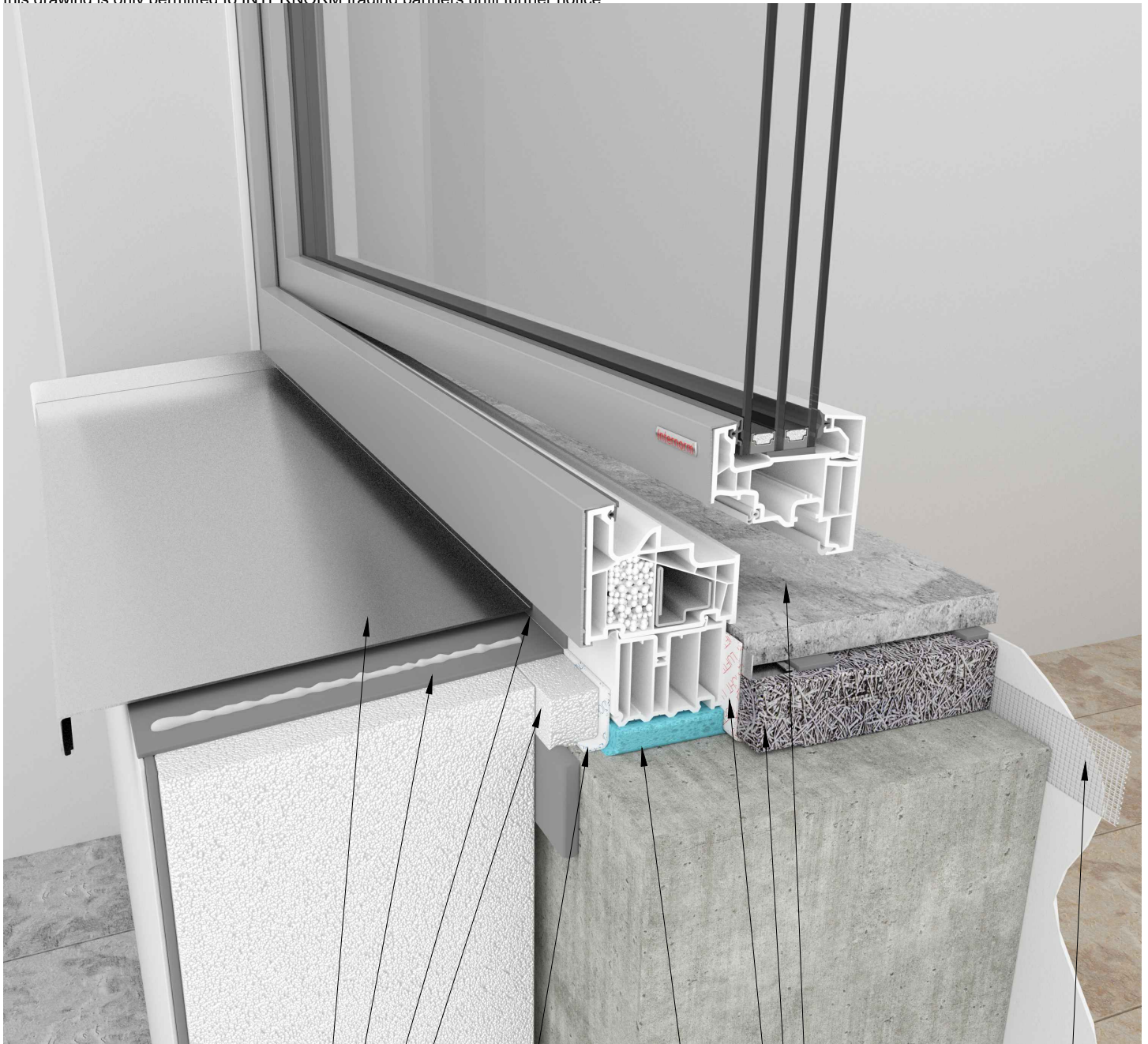
M 3D

Rev. 03

Date 09.11.2022

41C1_brick_KF410_detail windowsill Helopal RAG2

Attention!! This wall connection detail is provided free of charge by INTERNORM as an exemplary representation, whereby liability for individual cases is excluded. Use is only permitted if the assertion of claims for compensation due to incorrectness or incompleteness is waived. Consent is given through use. For the execution, the real conditions must be taken into account and the connection planning must be coordinated accordingly. The connection planning are planning according to the austrian standards. For the execution take into account the applicable standards in your country. The right to use this drawing is only permitted to INTERNORM trading partners until further notice.



windowsill Fenorm
Aluminium RAG2

insulation wedge

pre-compressed
sealing tape
rain tightness area

packers
insulation area

masonry λ
< 0,2

insidewindowsill helopal
linea shadow gap
filling material

reinforcement mesh

air tightness area

Internorm® WALL CONNECTION DETAIL

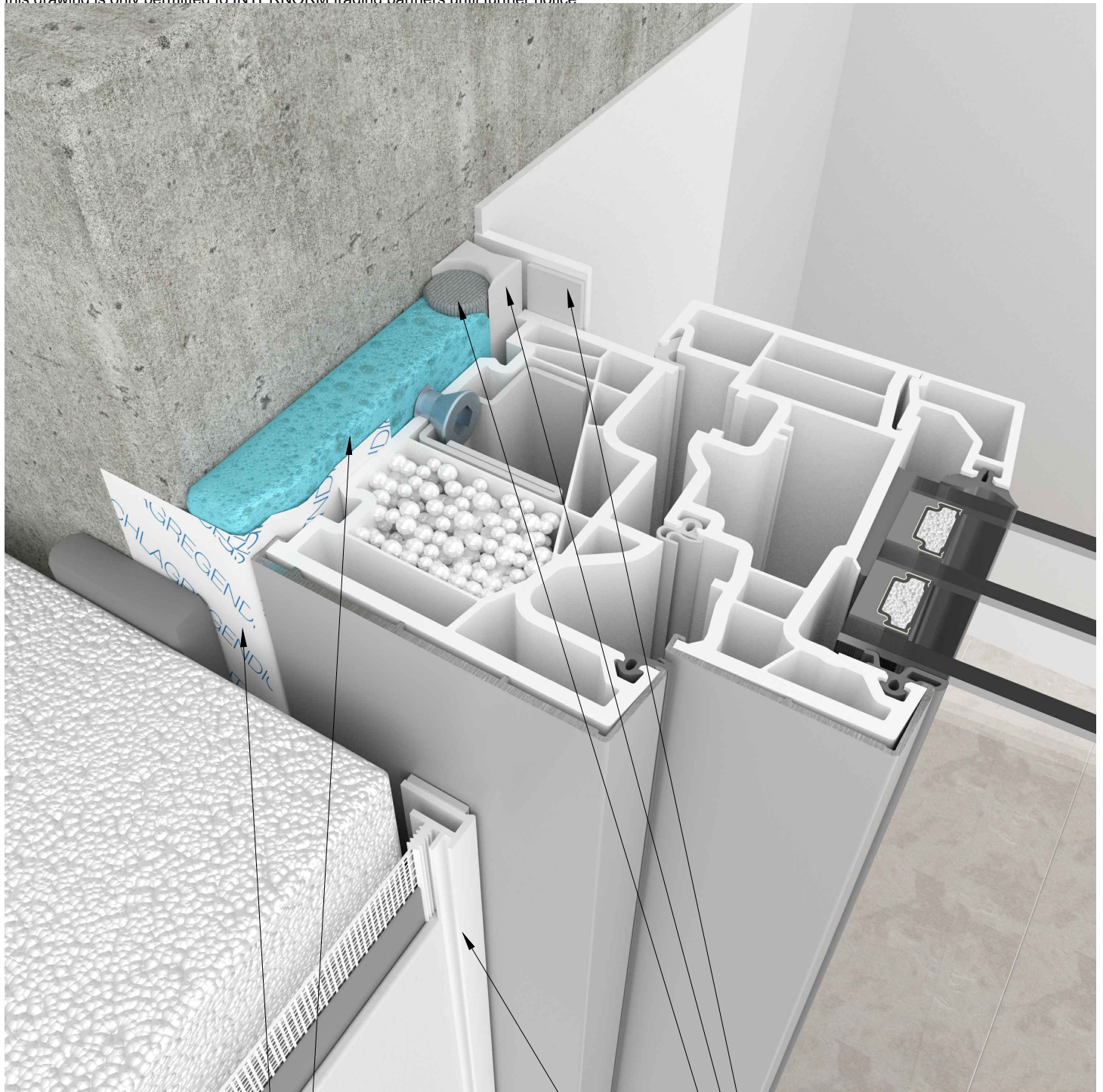
M 3D

Rev. 03

Date 09.11.2022

41C2_masonry insulation-concrete_KF410_detail at the side without guide rail

Attention!! This wall connection detail is provided free of charge by INTERNORM as an exemplary representation, whereby liability for individual cases is excluded. Use is only permitted if the assertion of claims for compensation due to incorrectness or incompleteness is waived. Consent is given through use. For the execution, the real conditions must be taken into account and the connection planning must be coordinated accordingly. The connection planning are planning according to the austrian standards. For the execution take into account the applicable standards in your country. The right to use this drawing is only permitted to INTERNORM trading partners until further notice.



rain tightness area

insulation area

cover strip

airtight sealant / LM20

round cord

junction profile

Internorm® WALL CONNECTION DETAIL

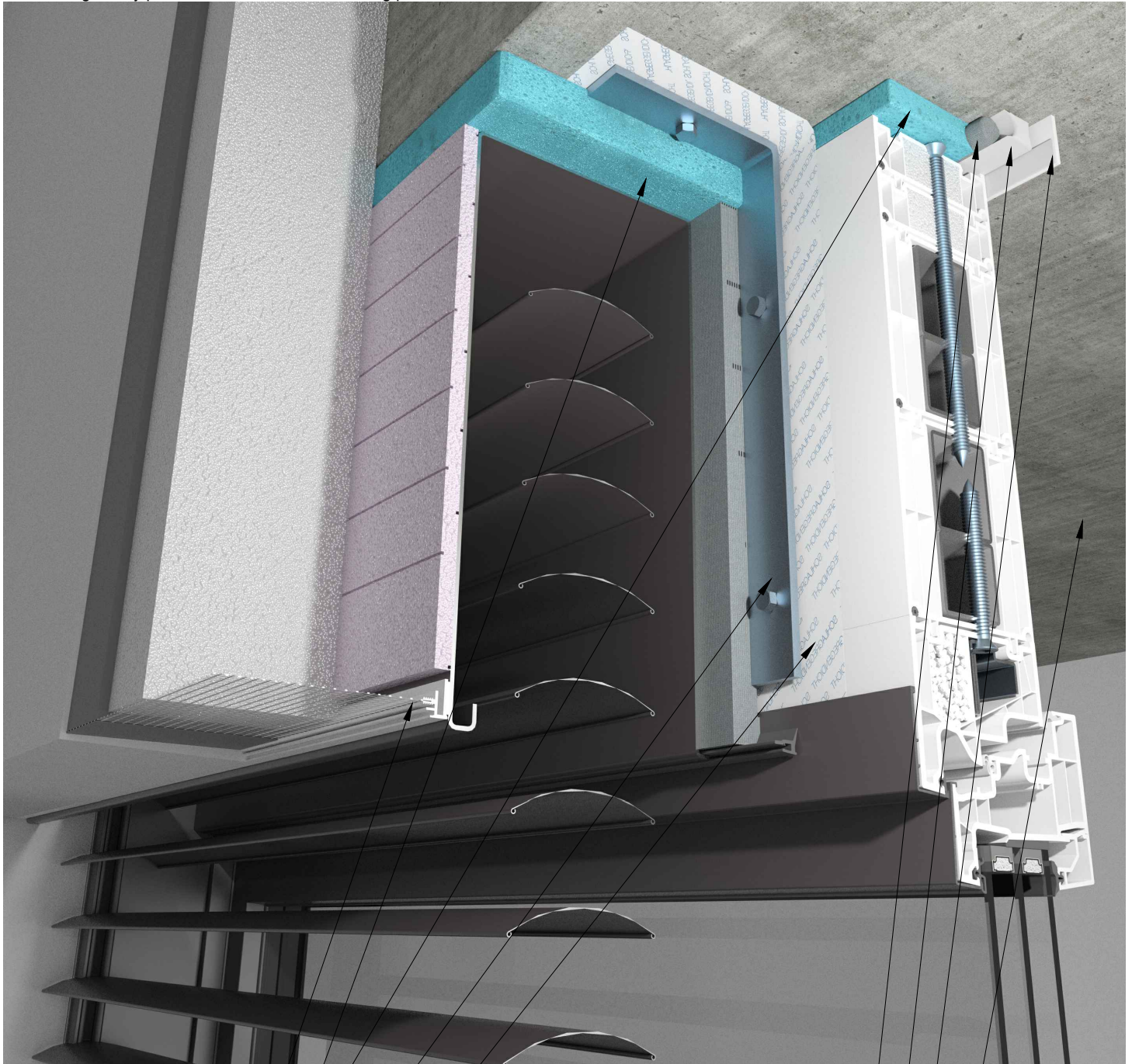
M 3D

Rev. 03

Date 09.11.2022

41C3_masonry insulation-concrete_KF410_detail above with Raffstore

Attention!! This wall connection detail is provided free of charge by INTERNORM as an exemplary representation, whereby liability for individual cases is excluded. Use is only permitted if the assertion of claims for compensation due to incorrectness or incompleteness is waived. Consent is given through use. For the execution, the real conditions must be taken into account and the connection planning must be coordinated accordingly. The connection planning are planning according to the austrian standards. For the execution take into account the applicable standards in your country. The right to use this drawing is only permitted to INTERNORM trading partners until further notice.



junction profile

insulation area

statically adequate
fastening

rain tightness area

round cord

airtight sealant / LM20

cover strip

floor ceiling

Internorm® WALL CONNECTION DETAIL

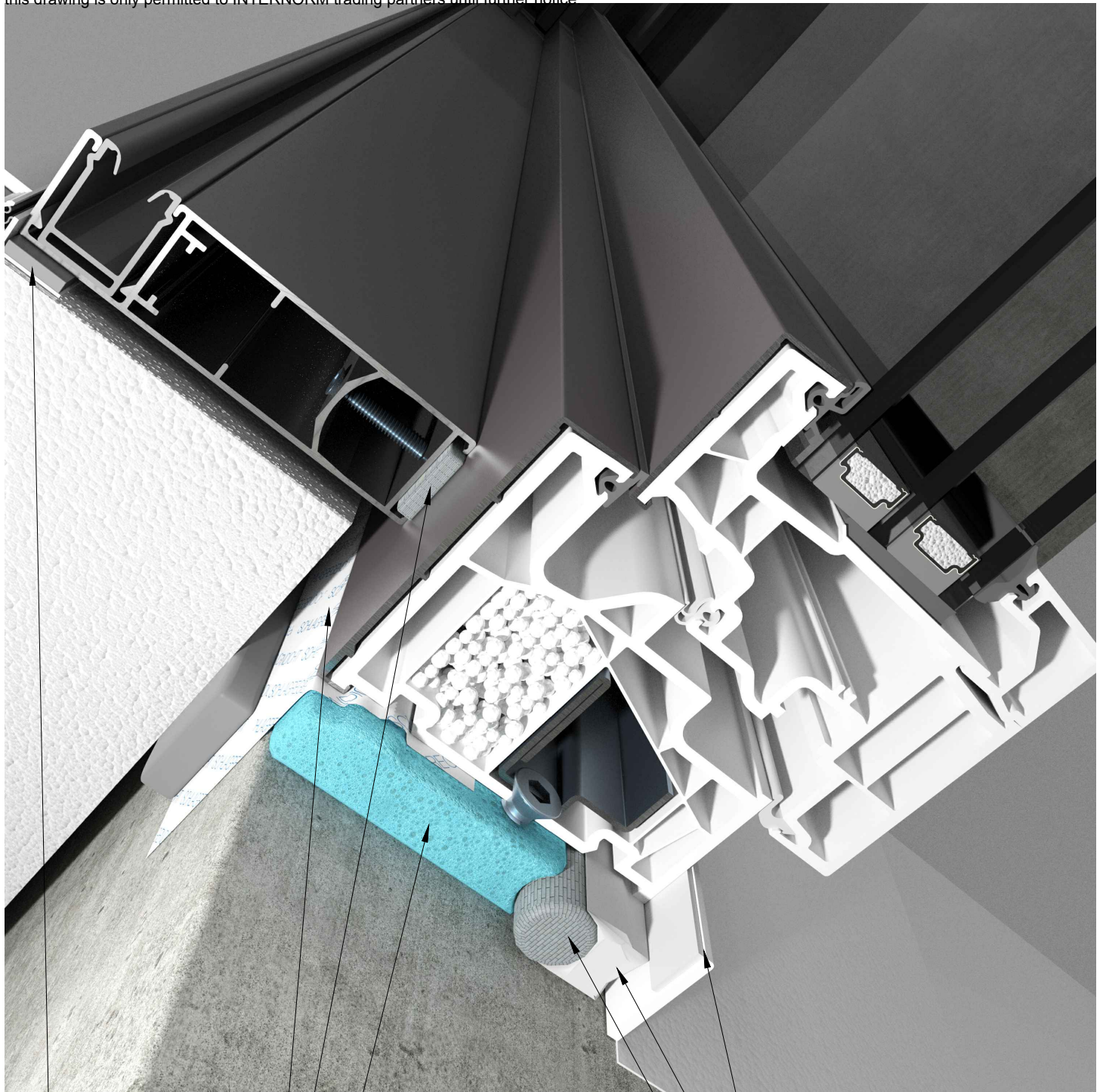
M 3D

Rev. 03

Date 09.11.2022

41C4_masonry insulation-concrete_KF410_detail at the side with guide rail

Attention!! This wall connection detail is provided free of charge by INTERNORM as an exemplary representation, whereby liability for individual cases is excluded. Use is only permitted if the assertion of claims for compensation due to incorrectness or incompleteness is waived. Consent is given through use. For the execution, the real conditions must be taken into account and the connection planning must be coordinated accordingly. The connection planning are planning according to the austrian standards. For the execution take into account the applicable standards in your country. The right to use this drawing is only permitted to INTERNORM trading partners until further notice.



junction profile

cover strip

rain tightness area

airtight sealant / LM20

pre-compressed
sealing tape

round cord

insulation area