

WEL- COME TO THE WORLD OF HEALTHCARE



**TAPWARE AND EQUIPMENT FOR PEOPLE WITH REDUCED MOBILITY FOR
HEALTHCARE ESTABLISHMENTS**

PRESTO®
loves water

A century of water conservation and safety for shared tap users counts!

For 100 years, PRESTO® has been designing and manufacturing tapware solutions for public areas to meet a specific water consumption need for each type of building, use or user. From the outset, the inventiveness of the founders and the remarkable effectiveness of the products quickly established PRESTO® as a technological reference in the various establishments receiving the most sensitive members of the public, such as the healthcare sector.

SANIFIRST® solutions - a Group brand - are specially designed to meet the particular needs of care facilities! High technology, ergonomics and design provide a response that is always adapted, safe, practical, ecological and economical for all types of users: carers, patients, visitors and maintenance staff.

Over the years, PRESTO® has adapted and innovated so that every individual, whether a demanding professional or a vulnerable patient in a healthcare establishment, can use water without risk. An unwavering commitment that has been maintained throughout the world and over the long term.

PRESTO® loves water – a love that lasts a lifetime.



CONTENTS

- 02 _ 07 The PRESTO® Group
- 08 _ 09 The 2 major risks
- 10 _ 13 3 expert technologies
- 14 _ 19 The 2 dedicated ranges

SELECTION FOR CARE FACILITIES

- 20 _ 39 Private & public hospitals**
- 40 _ 47 Care homes**
- 48 _ 55 Non-medical areas**



THE PRESTO® GROUP

Inventing new ways to use a shared tap

PRESTO® is a company that is 100% committed to its field and believes industry has a major responsibility to the planet. By creating a self-close technology that limits water consumption, PRESTO® has sustainably improved consumption of one of our most important resources: water.

A true technology influencer, PRESTO® has changed the way things are done by equipping millions of places and has inspired many manufacturers. Its unique technological secret gives its products incomparable qualities of hygiene, robustness and comfort. Its obsession remains unchanged: to enable places that need to use a lot of water to save water and to make their users safer.

PRESTO® can be found in all establishments open to the public

Early childhood, education, outdoor, leisure, trade, worship, sport, high security, culture, café-hotel-restaurant, healthcare, transport, office and industry. Each PRESTO® product is designed according to the specificities of use and is also adapted to renovation or construction constraints in France and in all other countries in the world.

Healthcare tapware that responds to the uses and challenges

Healthcare establishments continually receive vulnerable members of the public. For these establishments, there are health, regulatory and economic challenges! A context in which PRESTO® solutions are a great asset!

Five reasons why healthcare facilities rely on PRESTO®

- 1 Products that meet the highest hygiene and safety standards, efficiency and water saving demands.
- 2 Innovative, intelligent and contactless technology
- 3 Simple installation and maintenance
- 4 Ergonomics that make taps easy to use, by any member of the public
- 5 Compatibility without limits

With PRESTO®, tapware is not a matter of concern, but an effective means of providing comfort and safety to users of healthcare facilities, while controlling costs, water and energy consumption.





The PRESTO® company is...

A FAMILY STORY

In 1927, brothers André and Lucien Patient invent timed-flow tapware to prevent constantly running water in public sanitary facilities. For them, performance is already synonymous with saving money!

2 BRANDS

PRESTO® for the community
SANIFIRST® for the healthcare sector

6 PRODUCT CATEGORIES

- Washbasin
- Professional kitchen
- Shower
- Laboratory
- Urinal
- Flush

2 ADDITIONAL MARKETS

- Construction and renovation
- Spare parts

PRESENT IN 80 COUNTRIES WORLDWIDE

3 PRODUCTION SITES

2 in France and 1 in Portugal

6 COMMERCIAL SUBSIDIARIES INTERNATIONALLY

69 PATENTS FILED

220 EMPLOYEES



An industrial charter to match our commitments

Our products and solutions are designed and developed with our values in mind: quality, design, technology, responsibility.

QUALITY PRODUCTS

- /// Guaranteed 10 years*
- /// Certified ISO 9001 since 1995
- /// Certified high quality: ACS, NF

A CONSTANTLY DEVELOPING PERFORMANCE

- /// Unique technology on the market
- /// Active and integrated R&D

EXPERTISE THAT GOES BEYOND PRODUCTS

- /// Supporting professionals and projects over the long term
- /// A gateway to obtaining eco-labels and credentials of high environmental quality

* Varies between 3, 5 and 10 years depending on the type of product.



Healthcare references

Royal Edinburgh Hospital

United Kingdom

Royal Liverpool Hospital

United Kingdom

**COVID YARD Regional Hospital
Waterford**

United Kingdom

Køge Hospital

Denmark

Albatros Poteaupré

Belgium

Albatros Signy-le-Petit

Belgium

Centre hospitalier Titeca

Belgium

CHU Marie Curie

Belgium

Lanarca Hospital

Cyprus

Hôtel-Dieu de France

Lebanon

Prince Mansour Hospital

Saudi Arabia

King Abdullah Hospital-Bisha

Saudi Arabia

Aflaj Central Hospital

Saudi Arabia

Gurayat General Hospital

Saudi Arabia

City Hospital

Germany

St. Antonius Hospital

Germany

GPR Clinics

Germany

Diakonie

Germany

Magrabi Hospital

Qatar

Hôpital Saint-Anne

France

CHU Bordeaux

France

**Institut de cancérologie
Gustave Roussy**

France

THE 2 MAJOR RISKS



A healthcare facility is made up of very different areas, each with its own characteristics, uses and water requirements. But all **patient rooms, treatment rooms, operating theatres, all visitor toilets, staff changing rooms, laboratories and kitchens/cafeterias** have risks of burns and bacterial growth.

Burns

The primary victims are children and the elderly, who are thrown off balance when they are burned by hot water.

CONSEQUENCE: in a patient's room, the reflex to reach for the tap is the cause of serious burns if the tap does not have a "cold body".

In practice:

To what degree and how long does it take to burn?

- With hot water at 60°C, an adult gets 2nd degree burns in 5 seconds, 1 second is all it takes for a child under 5 years old.
- With hot water at 50°C, the burn occurs after several minutes: 5 minutes for an adult and 2.5 minutes for a child.

As required by the decree of 30 November 2005, for safety reasons, it is best to limit the maximum temperature of domestic hot water to 50°C at tapping points in all rooms used for personal hygiene.



Bacterial growth

In order to be classed as drinkable, water must have a hot water content of 0% (bacteria thrive in a warm environment). However, when they are turned off, most taps allow hot water to mix with the cold, increasing the risk of contamination.

CONSEQUENCE: water – which is essential for care personnel to wash their hands and for clinical tests – becomes a means of entry for bacteria in treatment rooms, operating theatres and laboratories. A source of transmission of nosocomial diseases such as *Pseudomonas aeruginosa*, which grows in water between 4 and 45°C. After contaminating taps, it proliferates on humans – including carers – through simple hand washing or after a shower.

In practice:

What is the best water temperature to limit the growth of bacteria such as legionella?

- ⌘ The temperature of the stored water must be below 55°C at all times at the outlet.
- ⌘ The water must be continuously held at a temperature of greater than 50 C at all points on the network (with the exception of terminal antennas with a length of less than 3 metres), including in the return of columns and loops.
- ⌘ The water temperature must be reduced by way of mixing (mechanical or thermostatic) as close as possible to the tapping point so that it is less than 40/45°C.



3 EXPERT TECHNOLOGIES



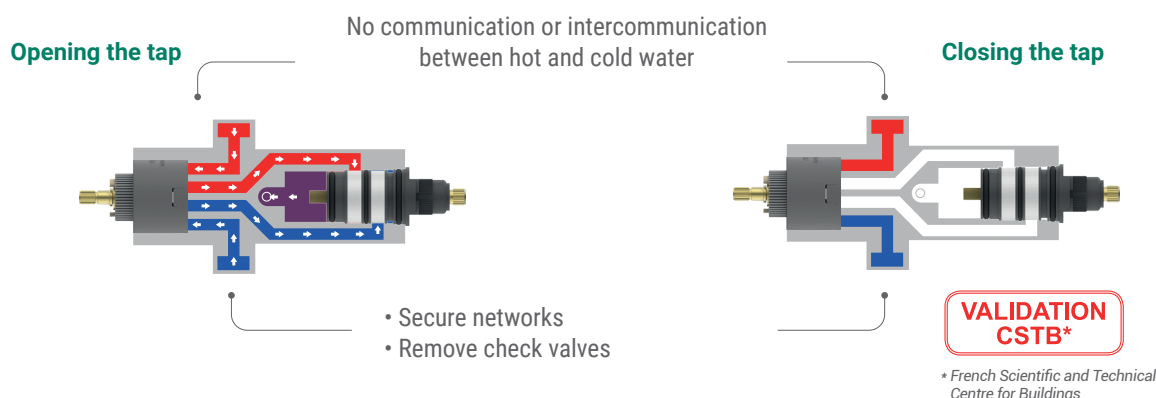


Technology

MasterMiX®

MasterMix® is a patented technology that **ensures double safety for the user: anti-scald and anti-bacterial growth** (network safety). When the mixer tap is in the closed position, **contamination is impossible**. This technology is available **for washbasins and showers**.

HOW? The mixing chamber is downstream of the plug (open/close button). There is no pressurised mixing chamber in the closed position.



ENHANCED SAFETY

- /// Dual safety limiter: 38°C and 41°C (based on references).
- /// The secure limiter can only be unlocked by technical services in order to carry out a thermal shock.
- /// Instantaneous cut-off of DHW (domestic hot water) in case of DCW (domestic cold water) supply failure, and vice versa.



MAXIMUM HYGIENE

- /// Removal of check valves, sources of cold water flow/hot water flow intercommunication and bacterial growth.
- /// Lack of intercommunication certified by the CSTB.



INSTALLATION AND MAINTENANCE FACILITATED

- /// The cartridge can be changed without shutting off the water supply (leave the lever in the closed position).
- /// Unpressurised mixing chamber.
- /// Wall-mounted versions: "plug & play" mounting plate for easy maintenance.

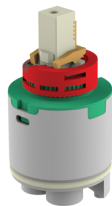
Ceramic cartridges

PRESTO® ceramic cartridges are all equipped with **dual flow** and **temperature lock** functions. The high and low versions also offer a **flow regulator**. This will **enable us to keep control of our water consumption** while ensuring **the comfort and safety** of all users.

3 types of cartridges:



"LOW" CARTRIDGE
PROD. NO. 93026



"HIGH" CARTRIDGE
PROD. NO. 93023



PRESSURE-BALANCING CERAMIC CARTRIDGE
PROD. NO. 93024



SIGNIFICANT WATER SAVINGS

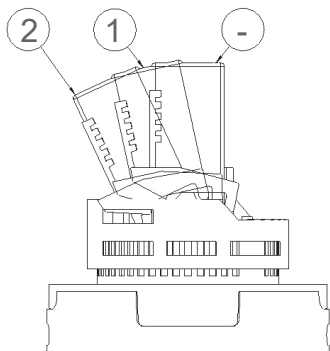
DUAL FLOW

All ceramic cartridges are equipped with a double flow function:

- /// In position 1, the flow rate is limited to 50% (6 l/min, ideal for hand washing).
- /// In position 2, the flow is more intense.

FLOW REGULATOR

An adjustment screw (supplied exclusively with high and low cartridges) allows blocking of the maximum water flow depending on real needs.



SAFE TO USE AT ALL TIMES

Equipped with a mechanical temperature limiter, in plastic or brass, the cartridges allow the flow of hot water to be reduced with 7 different settings.

| Position on the cartridge | 1 | 2 | 3 | 4 | 5 | 6 | 7 |
|------------------------------|----|----|-----|-----|-----|-----|-----|
| Limitation of hot water flow | 0% | 3% | 10% | 20% | 30% | 40% | 50% |



LONG-TERM RESISTANCE

Designed with high quality materials, PRESTO® ceramic cartridges are a winning mix of resistance and reliability for healthcare facilities:

- /// More than 500,000 endurance movements.
- /// Resistant to 85°C, thermal shock up to 90°C and static pressure up to 25 bar.
- /// Corrosion-proof materials.

Infra-red sensors

A high-performance electronic system that allows you to **control the water usage** of your taps **without compromising the comfort of users and guaranteeing their safety**. No more taps on unnecessarily, no more over-consumption, no more bacterial growth and no more transmission of germs.



PROD. NO. 93025

The PRESTO® electronic remote control

PRESTO® has created a revolutionary electronic remote control to simplify and speed up all settings.

This is ideal for allowing each healthcare facility to easily adapt its programme choices to its needs (e.g. according to its attendance rate).



REVAMPED HYGIENE

- /// 2 solenoid valves per electronic mixer tap to limit the risk of bacterial growth:
 - removable and disinfectable;
 - silicone to prevent biofilm from attaching on the membranes.
- /// Activation of a bypass allowing thermal shocks.
- /// Automatic rinsing according to the selected frequency (from 1 to 72 hours).
- /// Triggering and stopping the flow without any manual contact.



OPTIMISED WATER SAVINGS

- /// Automatic turning on of the tap when the sensor detects a presence (detection distance adjustable from 5 to 25 cm).
- /// 2 automatic programmes:
 - On/off mode within 5 cm of the sensor;
 - Hand-wash mode at over 5 cm from the sensor.
- /// Variable flow duration:
 - Up to 99 s in on/off mode;
 - From 0 to 30 s in hand wash mode.



INTELLIGENT SECURITY

- /// Tampering time from 0 s to 4 min in case of sensor blockage.

2 THE DEDICATED RANGES





The range

HoptiM'

This mixer tap with certified NF Medical E.C.A.U classification, has been specially **designed for health establishments and facilities for the elderly**. It combines: **slim and modern design suitable for persons with reduced mobility, sanitary safety, flexibility of use and easy maintenance**. Ideal for offering **convenience and comfort** to users.

3 types of lever possible:

(with or without pop-up drain)



MAXIMUM HYGIENE

- /// Low water retention in the spout.
- /// Smooth interior and exterior body and spout (limits biofilm attachment and bacteria growth).
- /// Thermal shock possible with the lever removed.
- /// Compatible with coloured star flow-straightener: facilitates scheduled maintenance.



ERGONOMIC USAGE

- /// Flow and temperature limiter on the cartridge (greater versatility).
- /// Intuitive and visible markings: hot/cold.



"NF MEDICAL" CERTIFICATION

- /// Minimum height under spout 90 mm and a minimum projection of 100 mm.
- /// Compatible with end filters.
- /// Flow rate between 4 and 6 l/min at 3 bar.

The range

Modul'MiX®

A RANGE OF TAILOR-MADE MIXER TAPS FOR HOSPITALS

The Modul'Mix® hospital mixer taps all have the same smooth body. The other elements, of lever or spout type, can be varied depending on the particular requirements to create a customised tap.

The Modul'Mix® range is based around a generic set of spare parts.



NF CERTIFICATION – E.C.A.U. MEDICAL CLASSIFICATION



In order to simplify our certification process, we have chosen to certify only a small selection of the Modul'Mix® parts. However, the Modul'Mix® products are made up of a range of multiple configurations based on a common hydraulic chain. For this reason, the certification requirements apply to the full product range.

The Modul'Mix electronic system has 2 solenoid valves (hot and cold water separation) in order to limit the risk of bacteria.

Product certified NF E.C.A.U medical classification



- H 100 mm
- P 150 mm
- Elbow control

Non-certified product



Only the lever is different; the hydraulic chain and the product performance are identical

- H 100 mm
- P 150 mm
- Solid lever

DIVERSITY AND MODULARITY

All our mixer taps in the Modul'Mix® range have interchangeable spouts and extensions. This means that you can adjust the projection and height to the spout to best suit your specific needs.

Lever type



**SOLID
LEVER**



**OPENWORK
LEVER**



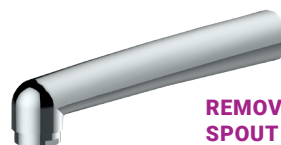
**ELBOW
CONTROL**



SHORT LEVER

Type de becs

**FIXED AND/OR
ADJUSTABLE
SPOUT AT THE
MANAGER'S
DISCRETION**



**REMOVABLE
SPOUT**

THE ADVANTAGES



HYGIENE

NEW

- Spout with low water content.
- Spout with smooth interior.
- No waste: limits bacterial deposits.
- Compatible with end filters.
- No retention zone.
- Star flow-straightener made from Hostaform reduces the risk of limescale, eliminates water retention and impurities, and is resistant to chlorine and thermal shocks.
- SPEX hoses resistant to chlorine and thermal shocks.



INSTALLATION AND MAINTENANCE

- Can be adapted to suit all configurations in terms of height and projection upon request
- Deck-mounted



"NF MEDICAL" CERTIFICATION

- "Showcase" products certified NF "M".
- Flow rate compliant with NF standard for medical environments; flow rate can be modified by adjustment screw if limiters removed.

MODUL'MIX SAFE+

NEW

SINGLE LEVER THERMOSTATIC MIXER:

Combine safety and modularity with our innovative single lever thermostatic mixers!

Anti-scalding protection, enhanced hygiene, and total adaptability to your needs.

Ideal for hospitals, clinics, nursing homes, retirement homes, and maternity wards.

CARTRIDGE PRINCIPLE:

The mixing chamber is located downstream of the shut-off valve: no pressurized mixing, ensuring precise temperature control.

ADVANTAGES & BENEFITS

IMPECCABLE HYGIENE

- Low water retention spout: reduces stagnation and bacterial growth
- Elbow-operated lever: avoids manual contact
- Smooth internal body: limits the risk of bacterial growth
- Star flow-straightener: reduces limescale build-up and impurities

ENHANCED ANTI-BACTERIAL SAFETY

- No check valves, reducing stagnant water
- Prevents any risk of cross-contamination between hot and cold water supplies
- Integrated flow regulator
- Easy access for thermal shock

REINFORCED ANTI-SCALDING SAFETY

- Single lever thermostatic cartridge with adjustable limiter for controlled temperature
- Safe thermal shock process

ADAPTABILITY TO YOUR NEEDS

- Fixed or swivel spout

ACCESSIBILITY & ERGONOMICS FOR ALL

- Elbow-operated lever designed for PRM (People with Reduced Mobility)



Trophée de
l'innovation
Hopitech
2025

Modul'MIX[®] SAFE⁺

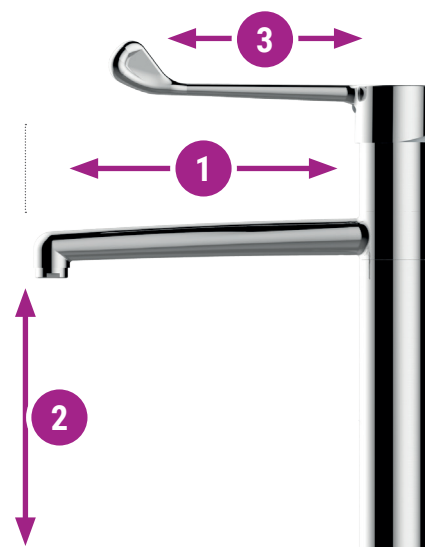
OVERVIEW

THE PERFECT OFFER TO MEET YOUR REQUIREMENTS

Flexibility:

universal body adaptable to different spouts and extensions

- 1 Spout length: 150 mm, 200 mm et 250 mm
- 2 Height to spout: 100 mm, 200 mm et 300 mm
- 3 Lever length: 160 mm and 210 mm



MODUL'MIX SAFE+ SPARE PARTS

Easily repair your tap with our adapted spare parts



Medical removable mixer spout

Projection 150 mm / 200 mm / 250 mm
Reference 93346 / 93347/ 93348

Single lever thermostatic cartridge

Adjustable flow rate
Ø40 mm
Reference 93344

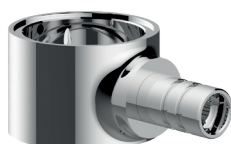


Extension base

Reference 93349

Straight elbow lever

Reference 93351 / 93352



Rotating inclined ring

Reference 93350

- 22 High-end patient rooms
- 24 Standard patient rooms
- 28 Treatment rooms
- 32 Operation rooms
- 34 Staff changing rooms
- 36 Laboratories





PRIVATE & PUBLIC HOSPITALS



HIGH-END patient rooms

To guarantee maximum comfort and safety for all users by equipping the premium rooms with specific, high-tech tapware.



DOUBLE ANTI-SCALD AND ANTI-BACTERIAL GROWTH SAFETY thanks to the patented MASTERMIX® technology without check valves.



ANTI-BACTERIAL GROWTH SAFETY AND ERGONOMICS with the HOPTIM® range, with high headroom under the spout and no water retention, or with our electronic taps with two solenoid valves which only mix hot and cold sanitary water at the last moment to limit any risk of bacterial development.



MAXIMUM HYGIENE with the virucidal rail range for persons with reduced mobility equipped with a film allowing the destruction of more than 99% of microbes in 24 hours and the Sars-Cov 2 Coronavirus in 1 hour!

WASHBASIN/MATERNITY WARD



75845
Washbasin mixer tap with solid lever without pop-up drain - HOPTIM®



75952
Deck-mounted thermostatic mixer tap for washbasins without pop-up drain - MASTERMIX®

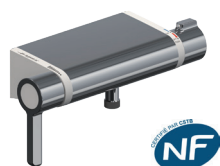


74047
Single hole thermostatic baby sink or bench mixer tap - MASTERMIX®

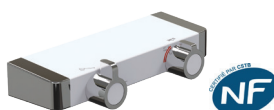


75210
Mains-powered electronic mixer tap with fixed spout with temperature control

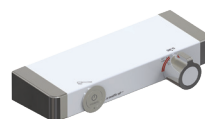
SHOWER



75948
Thermostatic shower mixer tap with low outlet - MASTERMIX®



75950
Thermostatic shower panel with bottom outlet - MASTERMIX®



75951
Thermostatic shower panel TOUCH® bottom outlet - MASTERMIX®

FLUSH



18524
Eco 2 l-4 l mounting frame
Brushed chrome face
P1000 XL E DVA

ACCESSORY



60469
Toilet roll holder for rail diameter 32 mm
anthracite grey ABS



60471
Hand shower holder for rail diameter 32 mm -
Satin finish

GRAB RAIL



60326
Foldaway rail
diameter 32 mm
L. 650 mm



60334
Corner and vertical rail
diameter 32 mm
Left model



60480
Foldaway shower seat
with adjustable legs



Products that meet the requirements of the SASO and ECAS standards



STANDARD patient rooms

Bringing comfort to patients without changing their habits with a tap that combines comfort and anti-scald safety.



DUAL WATER FLOW AND TEMPERATURE LOCK with the 3-function ceramic cartridge tap which ensures water consumption control, safety of use, but also energy savings thanks to opening in 100% cold water (no mixed water).



DOUBLE ANTI-SCALD AND ANTI-BACTERIAL GROWTH SAFETY thanks to the patented MASTERMIX® technology without check valves.



ENHANCED ANTI-SCALD safety thanks to the classic thermostatic technology and its instantaneous hot water cut-off in case of cold water cut-off (and vice versa).

WASHBASIN



75023
Washbasin mixer tap
with fixed spout
with pop-up drain
H 53.5 mm



75615
Washbasin mixer tap
with fixed spout
without pop-up drain
H 53.5 mm



75051
Washbasin mixer tap
with fixed spout
without pop-up drain
H 78.5 mm



75609
Washbasin mixer tap
with fixed spout
without pop-up drain
H 78.5 mm



75611
Washbasin mixer tap
with fixed spout
without pop-up drain
H 78.5 mm



75617
Energy-saving
washbasin mixer tap
without pop-up drain
H 92 mm



75845
Washbasin mixer tap
with solid lever
without pop-up drain
HOPTIM®



75916
Washbasin mixer tap
with solid lever without
pop-up drain - Energy
savings - HOPTIM®



75843
Washbasin mixer tap
with openwork lever
without pop-up drain
HOPTIM®



75841
Washbasin mixer tap
with elbow control
without pop-up drain
HOPTIM®

SHOWER



74050
Thermostatic shower mixer
tap - MASTERMIX®



75639
Thermal shock hospital
thermostatic shower
mixer tap



74101
Complete shower kit with
mixer tap - MASTERMIX®



75072
Shower mixer tap
with solid lever



75600
Shower mixer tap
with openwork lever



75073
Complete shower kit
with mixer tap 75072



Products that meet the requirements of
the SASO and ECAS standards

GRAB RAIL



60451
Straight rail
diameter 34 mm
L. 300 mm
Aluminium white ABS



60581
135° angled rail
diameter 34 mm
L. 400 x 400 mm
Aluminium white ABS



60809
Foldaway rail
diameter 34 mm
L. 650 mm
Aluminium white ABS



60736
Corner and vertical rail
diameter 34 mm
Left/right model
aluminium white ABS



60815
Foldaway shower seat



60584
Foldaway shower seat



60575
Straight rail diameter 25 mm
Bright chrome-plated



60340
Straight rail diameter 25 mm
White epoxy steel



60579
135° angled rail
diameter 25 mm
Bright chrome-plated



60345
135° angled rail
diameter 25 mm
White epoxy steel

FLUSH



18508
Mounting frame
P1000 XL DVA
Eco 3-6 l
Brushed chrome finish



18605
Mounting frame
with cistern and
single volume offset
control

ACCESSORY



60470
Toilet roll holder
for rail
diameter 34 mm
White ABS



60461
Hand shower holder
for rail
diameter 34 mm
White antibacterial ABS



Products that meet the requirements of
the SASO and ECAS standards





Treatment rooms

Facilitating patient care through welcoming treatment rooms, equipped with tapware adapted to the multi-functionality of the premises.



HIGH FLEXIBILITY with the MODUL'MIX® modular range with a universal body, a non-fixed and retrofittable tap structure (length and type of spout, height under the spout, mechanical or electronic technology). Quick conversion of an already installed tap with only a few spare parts.



ENHANCED ANTI-SCALD SAFETY thanks to the classic thermostatic technology and its instantaneous hot water cut-off in case of cold water cut-off (and vice versa).



DOUBLE ANTI-SCALD AND ANTI-BACTERIAL GROWTH SAFETY thanks to the patented MASTERMIX® technology without check valves. Ideal in a maternity ward!

MATERNITY WARD



74047
Single hole thermostatic
baby sink or bench mixer tap
MASTERMIX®



75095
Mixer tap with offset
"hairstyler" sink spray



29006
Thermostatic regulator
with parallel inputs



75110
Thermal shock
hospital thermostatic
bath/shower mixer tap

WASHBASIN



74074
Washbasin mixer tap with
fixed or swivel spout, single
lever MODUL'MIX® SAFE+



75060
Washbasin mixer tap with
fixed or adjustable spout
without pop-up waste
MODUL'MIX®



75062
Washbasin mixer tap with
fixed or adjustable spout
without pop-up waste
MODUL'MIX®



75040
Washbasin mixer tap with
fixed or adjustable spout
without pop-up drain
MODUL'MIX®



75064
Sink mixer tap with adjustable
spout without pop-up drain
MODUL'MIX®



75066
Sink mixer tap with adjustable
spout without pop-up drain
MODUL'MIX®



75126
Mixer tap with fixed or
adjustable spout
H 100 mm - MODUL'MIX®



75127
Mixer tap with fixed or
adjustable spout
H 100 mm EP - MODUL'MIX®



75135
Mixer tap with fixed or
adjustable spout
H 200 mm - MODUL'MIX®



75143
Mixer tap with fixed or
adjustable spout
H 300 mm - MODUL'MIX®



Products that meet the requirements of
the SASO and ECAS standards

SINK



75070
Sink mixer tap
with adjustable spout
with pull-out sink spray



75622
Sink mixer tap
with adjustable spout
with pull-out sink spray



75623
Sink mixer tap
with adjustable high spout



75624
Sink mixer tap with adjustable,
pull-out sink spray



75723
Wall-mounted sink mixer tap
with adjustable bottom-
mounted spout

GRAB RAIL



60315
Straight rail
diameter 32 mm - L. 500 mm
Brushed stainless steel



60468
Straight rail
diameter 34 mm - L. 500 mm
aluminium white ABS



60715
90° angled rail
diameter 34 mm - L. 300 x 300 mm
aluminium white ABS



60325
90° angled rail
diameter 32 mm - L. 300 x 300 mm
Brushed stainless steel



Products that meet the requirements of
the SASO and ECAS standards





Operation rooms

Ensure efficiency and safety through compliant and ergonomic tapware that caregivers can trust.



HIGH QUALITY with the mechanical MODULMIX® modular range certified "NF medical standard" (NF 077-15).



ANTI-BACTERIAL GROWTH SAFETY with the MODULMIX® electronic modular range equipped with 2 solenoid valves that prevent upstream mixing of domestic hot and cold water.



75135
Mixer tap with fixed
or adjustable spout
H 200 mm MODUL'MIX®



75143
Mixer tap with fixed
or adjustable spout
H 300 mm MODUL'MIX®



75871
Mains-powered sensor mixer
tap H 200 mm MODUL'MIX®



75880
Mains-powered sensor
mixer tap H 300 mm
MODUL'MIX®



75151
Mains-powered sensor mixer
tap H 200 mm MODUL'MIX®



75161
Mains-powered sensor
mixer tap H 300 mm
MODUL'MIX®



75221
Wall-mounted discharge with
adjustable and removable
spout above



55134
Deck-mounted sensor mixer
tap - PRESTO® 5750



75216
Wall-mounted discharge
with removable fixed spout



31683
Knee-operated
PRESTO® 712



71044
Suspended collective basin
1,800 mm - Stainless steel



23644
PRESTO® 530 wall or
ground pedal



Products that meet the requirements of
the SASO and ECAS standards



Staff changing rooms

Improving the well-being of care staff and their health and safety with comfortable, practical, hygienic and modern equipment.



ERGONOMICS AND ANTI-BACTERIAL GROWTH SAFETY with the HOPTIM® range of taps, which combines a slim and elegant design, high headroom under the spout, no water retention.



COMFORT AND CONVENIENCE thanks to the PRESTOTEM® 2 TOUCH® MASTERMIX® shower panel and its touch activation, its adjustable shower head and rain jet, its anti-scald safety (patented MASTERMIX® technology).



EASY TO USE AND ALWAYS CLEAN thanks to the DL 400 E SENSOR® range of touchless showers with start/stop, time and automatic flush functions.



MAXIMUM HYGIENE with the range of virucidal rails for persons with reduced mobility equipped with a film allowing the destruction of more than 99% of microbes in 24 hours and 96% of the Coronavirus Sars-Cov 2 in 1 hour!

GRAB RAIL



60472
Vertical straight rail with
32 mm diameter sliding
block



60664
Vertical straight rail with
34 mm diameter sliding
block



60333
T rail diameter 32 mm



60754
T rail diameter 34 mm

SHOWER



88858
Thermostatic shower panel
PRESTOTEM® 2
TOUCH® MASTERMIX®



88860
Thermostatic shower panel
PRESTOTEM® 2
TOUCH® MASTERMIX®



27470
Electronically triggered shower
DL 400 E-SENSOR®

WASHBASIN



75845
Washbasin mixer tap
with solid lever
without pop-up drain -
HOPTIM®



75843
Washbasin mixer tap
with openwork lever
without pop-up drain -
HOPTIM®



Products that meet the requirements of
the SASO and ECAS standards



Laboratories

Promote the working comfort of operators thanks to tapware that is as efficient and effective as it is attractive and pleasant to use.



DESIGN, HYGIENE AND DURABILITY with FIRST LABO 2 laboratory taps. A new modern and refined range with aesthetic bending, ergonomic knob, high watertightness of the bowl, resistance to corrosion and impact, while meeting the criteria of the EN 13792 standard.



SPEED, EFFICIENCY AND SAFETY with the PRESTO® safety tap with fast flow allowing very fast rinsing of the body part exposed to chemicals. PRESTO® safety taps have been awarded the European standard EN15154-1&2 and the American standard ANSI Z 358.1-2004.

LABORATORY BENCH / DRINKING WATER



721073
Deck-mounted candlestick
with one tap
Projection 190 mm



721023
Deck-mounted candlestick
with two taps
Projection 210 mm



721203
Deck-mounted mixer
with two taps
Projection 200 mm



721163
Deck-mounted column
with one tap
Projection 200 mm



721123
Deck-mounted column -
Projection 200 mm



721143
Wall-mounted remote control tap



721233
Wall-mounted tap with telescopic rod

LABORATORY BENCH / COMPRESSED AIR



726023
Deck-mounted with one tap
Projection 103 mm



726043
Tap on base
Projection 114 mm



726053
Deck-mounted nozzle diameter 6 mm



726063
Wall-mounted tap with telescopic rod



Products that meet the requirements of
the SASO and ECAS standards

LABORATORY BENCH / NITROGEN



727023
Deck-mounted socket
with one tap
Projection 103 mm



727043
Tap on base
Projection 114 mm



726053
Deck-mounted nozzle
diameter 6 mm



727063
Wall-mounted tap with
telescopic rod

LABORATORY BENCH / VACUUM



725023
Deck-mounted socket
with one tap
Projection 103 mm



725043
Tap on base Projection
114 mm



725053
Deck-mounted nozzle
diameter 6 mm



725063
Wall-mounted tap with
telescopic rod

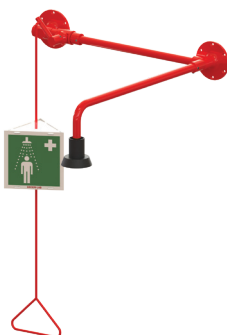
SAFETY



85671
Combined safety
shower/eye wash station



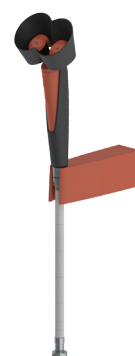
85753
Safety shower
ceiling supply



86203
Safety shower with
visible water inlet



85765
Safety eye wash station
model with bowl



86202
Safety eye
wash station



Products that meet the requirements of
the SASO and ECAS standards



| | |
|----|-----------------|
| 42 | Patient rooms |
| 46 | Treatment rooms |





CARE HOMES



Patient rooms

Bringing comfort to patients without changing their habits with a tap that combines comfort and anti-scald safety.



DOUBLE WATER FLOW AND TEMPERATURE LOCK with the 3-function ceramic cartridge valve that ensures control of water consumption and safety of use.



DOUBLE ANTI-SCALD AND ANTI-BACTERIAL GROWTH SAFETY thanks to the patented MASTERMIX® technology without check valves.



ENHANCED ANTI-SCALD safety thanks to the classic thermostatic technology and its instantaneous hot water cut-off in case of cold water cut-off (and vice versa).

WASHBASIN



75023
Washbasin mixer tap
with fixed spout
with pop-up drain
H 53.5 mm



75615
Washbasin mixer tap
With fixed spout
without pop-up drain
H 53.5 mm



75608
Washbasin mixer tap
with fixed spout
with pop-up drain
H 78.5 mm



75609
Washbasin mixer tap
with fixed spout
without pop-up drain
H 78.5 mm



75611
Washbasin mixer tap
with fixed spout
without pop-up drain
H 78.5 mm



75844
Washbasin mixer tap
with solid lever
with pop-up waste
HOPTIM®



75845
Washbasin mixer tap
with solid lever without
pop-up waste
HOPTIM®



75840
Washbasin mixer tap
with elbow control
without pop-up drain
HOPTIM®



75841
Washbasin mixer tap
with elbow control
without pop-up drain
HOPTIM®



75843
Washbasin mixer tap
with openwork lever
without pop-up drain
HOPTIM®

SHOWER



75072
Shower mixer tap
with solid lever



75600
Shower mixer tap
with openwork lever



75640
Shower thermostatic
mixer tap



75638
Shower thermostatic
mixer tap



74050
Thermostatic shower mixer
tap - MASTERMIX®



74101
Complete shower set
with mixer tap MASTERMIX®



Products that meet the requirements of
the SASO and ECAS standards

FLUSH



18524
Eco 2 I-4 I-mounting
frame I Brushed chrome
face P1000 XL E DVA



18607
Mounting frame with
cistern and dual volume
control



18605
Mounting frame
with cistern and
single volume offset
control

ACCESSORY



60470
Toilet roll holder for rail
diameter 34 mm
- white ABS



60461
Hand shower holder for rail
diameter 34 mm
White antibacterial ABS

GRAB RAIL



60451
Straight rail
diameter 34 mm
L. 300 mm
Aluminium white ABS



60581
135° angled rail
diameter 34 mm
L. 400 x 400 mm
aluminium white ABS



60809
Foldaway rail
diameter 34 mm
L. 650 mm
Aluminium white ABS



60736
Corner and vertical rail
diameter 34 mm
Left/right model



60815
Foldaway shower seat



Products that meet the requirements of
the SASO and ECAS standards





Treatment rooms

Facilitating patient care through welcoming treatment rooms, equipped with tapware adapted to the multi-functionality of the premises.



HIGH FLEXIBILITY with the MODUL'MIX® modular range with a universal body, a non-fixed and retrofittable tap structure (length and type of spout, height under spout, mechanical or electronic technology). Quick conversion of an already installed tap with only a few spare parts.



ENHANCED ANTI-SCALD SAFETY thanks to the classic thermostatic technology and its instantaneous hot water cut-off in case of cold water cut-off (and vice versa).



DOUBLE ANTI-SCALD AND ANTI-BACTERIAL GROWTH SAFETY thanks to the patented MASTERMIX® technology without check valves. Ideal in a maternity ward!

WASHBASIN



75060
Washbasin mixer tap with fixed or adjustable spout without pop-up drain MODUL'MIX®



75062
Washbasin mixer tap with fixed or adjustable spout without pop-up drain MODUL'MIX®



75040
Washbasin mixer tap with fixed or adjustable spout without pop-up drain MODUL'MIX®



75064
Sink mixer tap with adjustable spout without pop-up drain MODUL'MIX®



75066
Sink mixer tap with adjustable spout without pop-up drain MODUL'MIX®

SINK



75070
Sink mixer tap with adjustable spout with pull-out sink spray



75622
Sink mixer tap with adjustable spout with pull-out sink spray



75623
Sink mixer tap with adjustable high spout



75723
Wall-mounted sink mixer tap with adjustable bottom-mounted spout

GRAB RAIL



60315
Straight rail
diameter 32 mm
L. 500 mm
Brushed stainless steel



60468
Straight rail
diameter 34 mm
L. 500 mm
Aluminium white ABS



60325
90° angled rail
diameter 32 mm
L. 300 x 300 mm
Brushed stainless steel

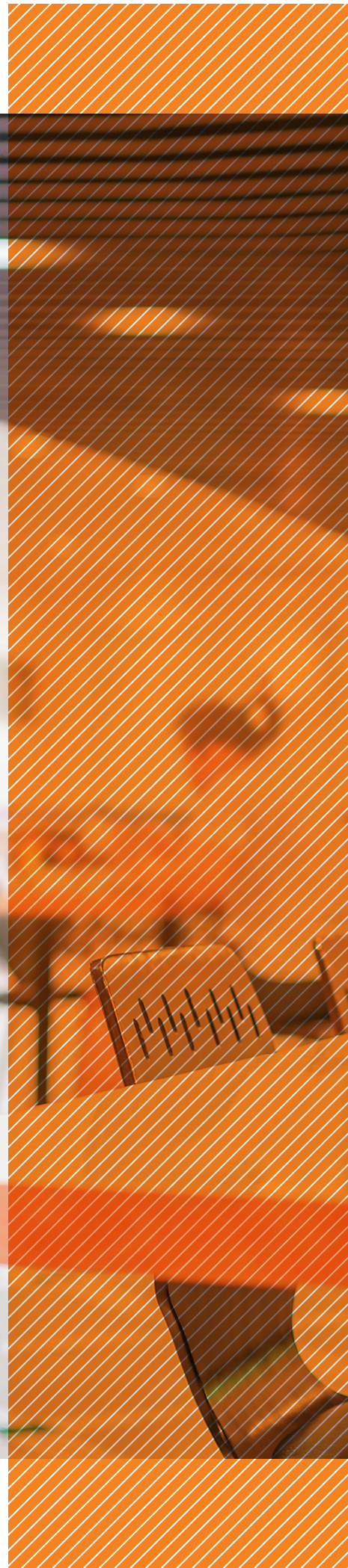



60715
90° angled rail
diameter 34 mm
L. 300 x 300 mm
Aluminium white ABS



Products that meet the requirements of the SASO and ECAS standards

- 50 Visitor toilets
- 54 Cafeterias/Kitchens





NON-MEDICAL AREAS



Visitor toilets

Reduce the water consumption of public toilets without impairing their proper functioning, guaranteeing perfect hygiene without sacrificing aesthetics.



OPTIMAL COMFORT AND DESIGN with the PRESTO NOVA® intelligent electronic range, which combines robustness, comfort of use, easy maintenance and contemporary style with its 3 finishes.



MAXIMISED HYGIENE AND WATER SAVING with the PRESTO LINEA® contactless electronic range, comfortable and easy to clean with its tubular design and smooth body. Equipped with an automatic rinsing system, it limits stagnation of water in the networks. Versions with lead-free brass are also available.



RESISTANCE TO INTENSIVE USE, HYGIENE AND AESTHETICS GUARANTEED thanks to the PRESTO® 7000 XL N direct flush range with dual release (mechanical and electronic). It comes with a new matte black anti-fingerprint finish and a rose gold effect button.



COMPACT AND FULLY INTEGRATED, the SENSAO® 8400 N range of electronic urinals can be integrated into any environment. It is interchangeable with many urinal taps on the market. Installation and maintenance are made easy.

WASHBASIN



55375
Deck-mounted electronic mixer tap
3 l/min - PRESTO NOVA®



55383
Deck-mounted electronic mixer tap
1.9 l/min - PRESTO NOVA®



55391
Deck-mounted electronic mixer tap - PRESTO NOVA®



55395
Deck-mounted simple electronic tap -
PRESTO NOVA®



56236
Deck-mounted electronic mixer
tap - PRESTO SO'O®

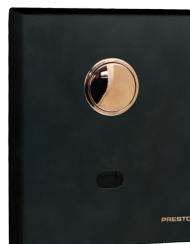


57102
Simple electronic wall-
mounted tap PRESTO
LINEA®

FLUSH



55432
Sensor tap
for direct flush PRESTO®
7100 XL N



55478
Sensor tap for direct flush
PRESTO® 7200 XL N



55436
Sensor tap for direct flush
PRESTO® 7300 XL N



18506
Mounting frame for direct
flush PRESTO® 7100 XL N



Products that meet the requirements of
the SASO and ECAS standards

URINAL



55371
Sensor tap for urinal
PRESTO SENSÃO®
8400 N



55372
Siphon tube for siphonic
action urinals



55444
Sensor tap for urinal
PRESTO SENSÃO®
8100 N



55440
Sensor tap for urinal
PRESTO SENSÃO®
8600 N



55480
Sensor tap for urinal
PRESTO SENSÃO®
8300 N

ACCESSORIES



60632
Wall-mounted bright
polished stainless steel
soap dispenser



60364
Compact hand dryer-
C-DRY



60361
Deck-mounted
hand dryer - H-DRY



52043
Deck-mounted electronic
soap dispenser



52042
Wall-mounted electronic
soap dispenser

GRAB RAIL



60451
Straight rail
diameter 34 mm
L. 300 mm
Aluminium white ABS



60581
135° angled rail
diameter 34 mm
L. 400 x 400 mm
Aluminium white ABS



Products that meet the requirements of
the SASO and ECAS standards





Cafeterias/Kitchens

Maintain perfect hygiene while facilitating the work of the kitchen staff thanks to functional tap solutions, designed by and for professionals.



ERGONOMICS, ROBUSTNESS AND EFFICIENCY with the PRESTO CHEF® range dedicated to professional kitchens, composed of pre-wash taps – with a PRESTO® hand shower that combines endurance, efficiency and jet quality – and more classic taps (mixer type).



FULL HYGIENE with the PRESTO SAFE® range of washbasin sensor taps (wall-mounted or deck-mounted versions). These self-close taps are designed to meet the requirements of public sanitary facilities and feature touchless activation, an automatic flush function and a “plug & play” system for easy installation (even when replacing a mechanical tap).



PRACTICALITY AND CLEANLINESS thanks to the range of remote controls (foot or leg) which allow the tap to be activated without manual contact.



70830
Deck-mounted mini column mixer tap with hand shower and spout - PRESTO CHEF®



70820
Deck-mounted mixer tap column with hand shower and spout - PRESTO CHEF®



70818
Deck-mounted mixer tap column with hand shower and spout - PRESTO CHEF®



70826
Wall-mounted mixer tap, 2 holes with hand shower and spout - PRESTO CHEF®



70802
Deck-mounted mixer tap with spout on top - PRESTO CHEF®



70832
Deck-mounted mixer tap Special bar - PRESTO CHEF®



70804
Wall-mounted mixer tap, 2 holes with spout on top PRESTO CHEF®



70806
Wall-mounted mixer tap, 2 holes with bottom-mounted spout PRESTO CHEF®

OTHER TAPS



75623
Sink mixer tap with adjustable high spout



75624
Sink mixer tap with pull-out sink spray



64675
Simple wall-mounted timed-flow tap - PRESTO SAFE®



68075
Wall-mounted timed-flow mixer tap PRESTO SAFE®



55162
Electronic mixer tap PRESTO VOLTA®



23614
PRESTO® 520 wall or floor pedal



23644
PRESTO® 530 wall or floor pedal



31683
Knee operated PRESTO® 712



Products that meet the requirements of the SASO and ECAS standards

Edition November 2025 - Code Z546.7-04
Photos non contractually binding.
Design production: Aire

Crédits photos :

© Chinnapong, © borchee, © imaginima, © JazzlRT, © jentakespictures, © mapodile, © monkeybusinessimages, © PhonlamaiPhoto, © photographer, © simarik, © Wavebreakmedia, © YurolaitsAlbert, © Dean Mitchell - iStock / © ercan_senkaya, © jiravut, © romaset, © Chinnapong, © denisismagilov, © sveta, © F16-IS0100, © mantinov - AdobeStock / © Tyler Olson - Fotolia, © Jben art



CONTACT

Request for documentation
Sales Administration
Order tracking
Price offer
Tel. : +33 (0)1 46 12 34 56
Fax : +33 (0)1 47 35 69 82
Email : adv.export@presto.fr

TECHNICAL SUPPORT

Tel. : +33 (0)1 46 12 34 56
Email : assistancetechnique@presto-group.com

DOWNLOAD CENTER

Technical data, layouts, tenders, photos
www.prestodatashare.com

VIRTUAL SHOWROOM

www.presto.fr/en/company/showroom

PRESTO equips
public areas, some of which are
sensitive, with the most ecological
and economical French tapware.

PRESTO®
loves water

PRESTO



LES ROBINETS PRESTO S.A.

7, RUE RACINE
92542 MONTROUGE CEDEX – FRANCE
Tel. : +33 (0)1 46 12 34 56
Fax : +33 (0)1 47 35 69 82
Email : adv.export@presto.fr
www.presto.fr/en | www.presto-group.com |
www.prestodatashare.com | www.prestobim.com

PRESTO MIDDLE EAST / DMCC

GABC 10TH FLOOR, SWISS TOWER, CLUSTER Y
JLT PO BOX 643718 DUBAI
UNITED ARAB EMIRATES
Tel. : +971 (0) 52 79 32 409
Email : d.heyberger@presto.fr
www.presto-group.com | www.presto-me.com
www.prestodatashare.com | www.prestobim.com

[presto_group](#)

[Les Robinets PRESTO](#)

[presto_robinets](#)

[Presto Robinets](#)

[@GroupePresto](#)