



FROST_LOCK

WINLOCK

FIRE DOORS

FROST LOCK

Freeze-resistant



FROST_LOCK

These industrial sectional shutters provide excellent thermal insulation down to $-23\text{ }^{\circ}\text{C}$ and can optionally be supplied in a fire-rated configuration.

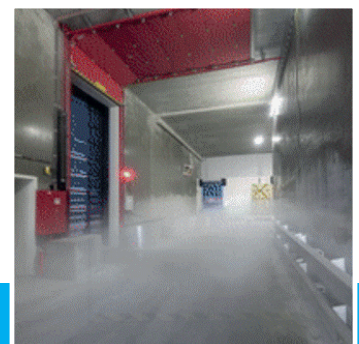
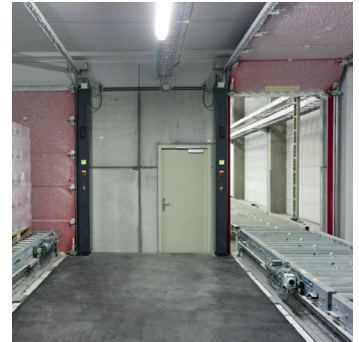
Frost Lock is the ideal solution for applications where negative temperatures prevail on both sides of the door, such as freezer warehouses, cold corridors, and deep-freeze storage areas within temperature-controlled production or logistics facilities.

These isothermal doors minimise energy loss and enhance fire safety in temperature-controlled environments. They integrate seamlessly into a comprehensive fire compartmentation system, physically separating cold zones to slow fire propagation and safeguard the continuity of critical processes.

For even more extreme environments, we developed Cryo Lock, designed for cryogenic applications down to $-60\text{ }^{\circ}\text{C}$, where conventional systems are no longer sufficient.

Designed and tailored to your needs

As with all Winlock solutions, custom engineering is at the core of our approach. The Frost Lock application can be extended with additional features such as fire resistance, smoke sealing, liquid barrier, or a food safe configuration, fully adapted to the specific requirements of your project.



Technical specifications

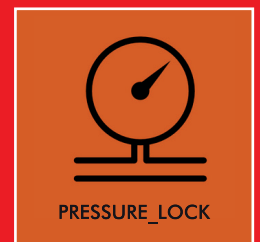
| | |
|-----------------------|---|
| Thermal range: | $-23\text{ }^{\circ}\text{C}$ |
| U-value: | $1,2\text{ Wm}^2\text{K}$ |
| Insulation thickness: | minimum 80 mm |
| Finish: | Powder-coated or stainless steel |
| Maximum width: | 7,440 mm |
| Maximum height: | 7,223 mm |
| Maximum surface area: | 45 m^2 / Fire-resistance version: $35,85\text{ m}^2$ |

WINLOCK

WINLOCK

FIRE DOORS

Multiple add-ons
Endless possibilities



winlockfiredoors.com
info@winlockfiredoors.com

