



WINLOCK
FIRE DOORS

OPTI LOCK

Fire-rated vision panel

CE marking in accordance with EN 16034 & EN 13241



OPTI_LOCK

This fire-rated industrial sectional shutter with an integrated fire-resistant vision panel is ideal for applications where fire safety and visual inspection are equally important.

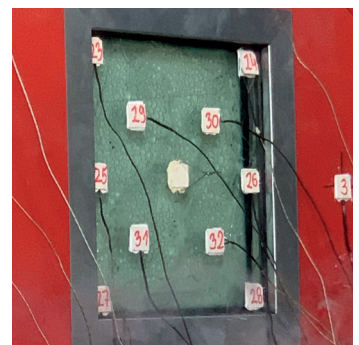
The laminated glass is composed of multiple panes and intumescent interlayers that expand under heat. The glazing is EI-classified, providing bidirectional fire protection. It has a total thickness of 54 mm, with light transmission of 75% and light reflection of 7%.

In the event of a fire, the interlayers transform into rigid, opaque fire shields that block flames, limit heat transfer through the glazing, and reduce the temperature rise on the protected side of the glass.

This specific solution is ideal for environments where fire protection and process monitoring must go hand in hand, such as ADR storage areas, battery storage rooms, ATEX zones, cleanrooms, and recycling facilities.

In addition to fire protection, this door can be equipped with additional features such as Noise Lock (sound insulation), Liquid Lock (liquid barrier), or Food Lock (food-safe configuration).

If you require a custom configuration, our experts will be happy to assist you in creating the ideal solution. As with all Winlock products, safety and quality are rigorously tested under real-life conditions, ensuring a reliable and durable result you can trust.



Technical specifications

Fire resistance:	EI1 60 to EI1 240
Fire test standards:	EN 1363-1, EN 1363-2, EN 1634-1
Classification standard:	EN 13501-2
Glass classification standard:	EN 14449:2005 + AC:2005
Glass thickness:	54 mm
Maximum glass dimension:	450 x 450 mm
Maximum clear view area:	350 x 350 mm

WINLOCK

WINLOCK

FIRE DOORS

Multiple add-ons
Endless possibilities



winlockfiredoors.com
info@winlockfiredoors.com

