



WINLOCK
FIRE DOORS

ATEX

Explosion protection



Our industrial sectional shutters are specifically designed for Ex and ATEX zones (ATmosphère EXplosible) with a risk of gas or dust explosions, and are certified in Categories I and II.

Category I

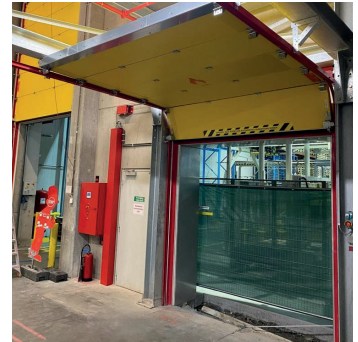
For installations operating inside permanently explosive atmospheres, such as silos, solvent tanks, or powder extraction systems. Every component must be completely spark-free, anti-static, and explosion-protected at all times and under all operating conditions.

Category II

For installations located in areas where explosive atmospheres occur frequently or occasionally, such as packaging lines handling fine powders, filling stations, or petrochemical facilities. Equipment in this category must be explosion-protected during normal operation, but does not need to provide protection against a continuously explosive atmosphere.

Designed and tailored to your needs

As with all Winlock solutions, custom engineering is at the core of our approach. Our ATEX-compliant shutters can be combined with other Winlock applications, including fire resistance, pressure resistance, smoke sealing, or a food-safe configuration, fully adapted to the specific requirements of your project.



Technical specifications

Directive:	2014/34/EU ATEX
Marking:	II 3 G Ex d ec IIB T5
EN IEC standards:	60079-0:2018/A11:2024 60079-7:2015/A1:2018 60079-1:2014/A11:2024
Category I:	Zone 0 (gas) / zone 20 (dust)
Category II:	Zone 1/21 (frequent) and Zone 2/22 (occasional)

WINLOCK

FIRE DOORS

Multiple add-ons
Endless possibilities



winlockfiredoors.com
info@winlockfiredoors.com

