

# *Canvas Series*

BY **VERSATEX**<sup>®</sup>  
**BUILDING PRODUCTS**

BEAUTY OF WOOD. DURABILITY OF PVC.





Yet another innovation from VERSATEX Building Products, The Canvas Series delivers the rich look of premium woods with the maintenance-free convenience of VERSATEX the industry has grown to love. Exterior-grade, wood-tone laminates are bonded onto VERSATEX's WP4, Stealth Beadboard, 4" Crown and Bed Mould profiles, eliminating the requirement of labor-intensive re-staining and adding the long-lasting durability and moisture/insect resistance of VERSATEX cellular PVC.

Offered in a wide variety of textured, low-gloss finishes, The Canvas Series is the solution to any project's porch ceiling, soffit, feature wall, or any other exterior/interior application you can think of. Add beautiful contrast to your next project with The Canvas Series by VERSATEX Building Products.

### BEAUTY OF WOOD. DURABILITY OF PVC.



WP4



Stealth Beadboard



4" Crown



Bed Mould

Brown line represents wood laminate coverage on profiles.

<i>Profile</i>	<i>Actual Size</i>	<i>16'</i>	<i>18'</i>
WP4	3/4" x 5 1/2"		•
Stealth Bead	1/2" x 6"		•
4" Crown	9/16" x 3 5/8"	•	
Bed Mould	9/16" x 3 5/4"	•	

- All profiles available in all finishes
- Color-matched touch-up kit available for purchase
- Visit [versatex.com/canvas](http://versatex.com/canvas) for handling & installation guides





Kitami



walnut



Weathered Grey



Macore



Walnut



## COLOR PALETTE



Walnut



## NATURAL AMBER

Warm and light with slight contrast and attractive grain.

"The Canvas Series allows us to give our custom-built homes a unique look. The durability and simple, clean installation sold me."

– Bob Sharpe

Sharpe Construction, Surf City, NJ







## DRIFTWOOD

A washed-out tan with deep, textured grain.





## TURNER OAK

Medium brown with deep grain patterns accompanied by a soft luster.



"I love the versatility and ease of use...  
Most PVC 'wood products' look fake,  
and VERSATEX's Canvas Series  
does not. It's amazing."

- Dan Harriger

Harriger Construction, Empire, MI





## **COPPER**

A saturated, medium brown offering moderate texture and contrast.





## WALNUT

A rich, chocolate brown with unique grain variations.

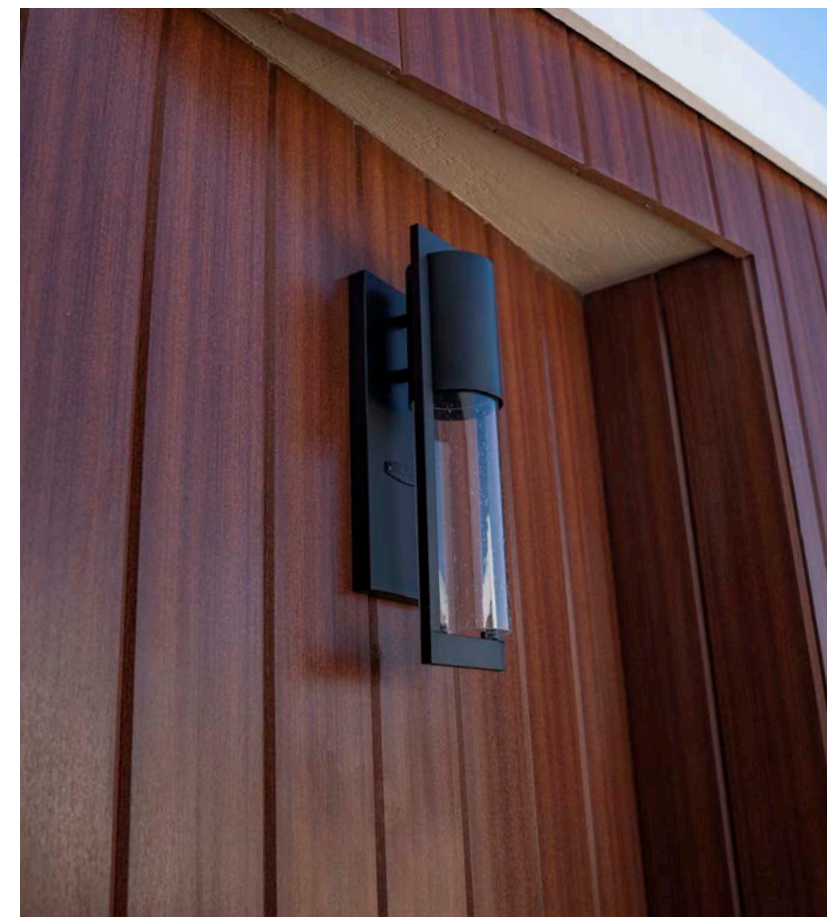


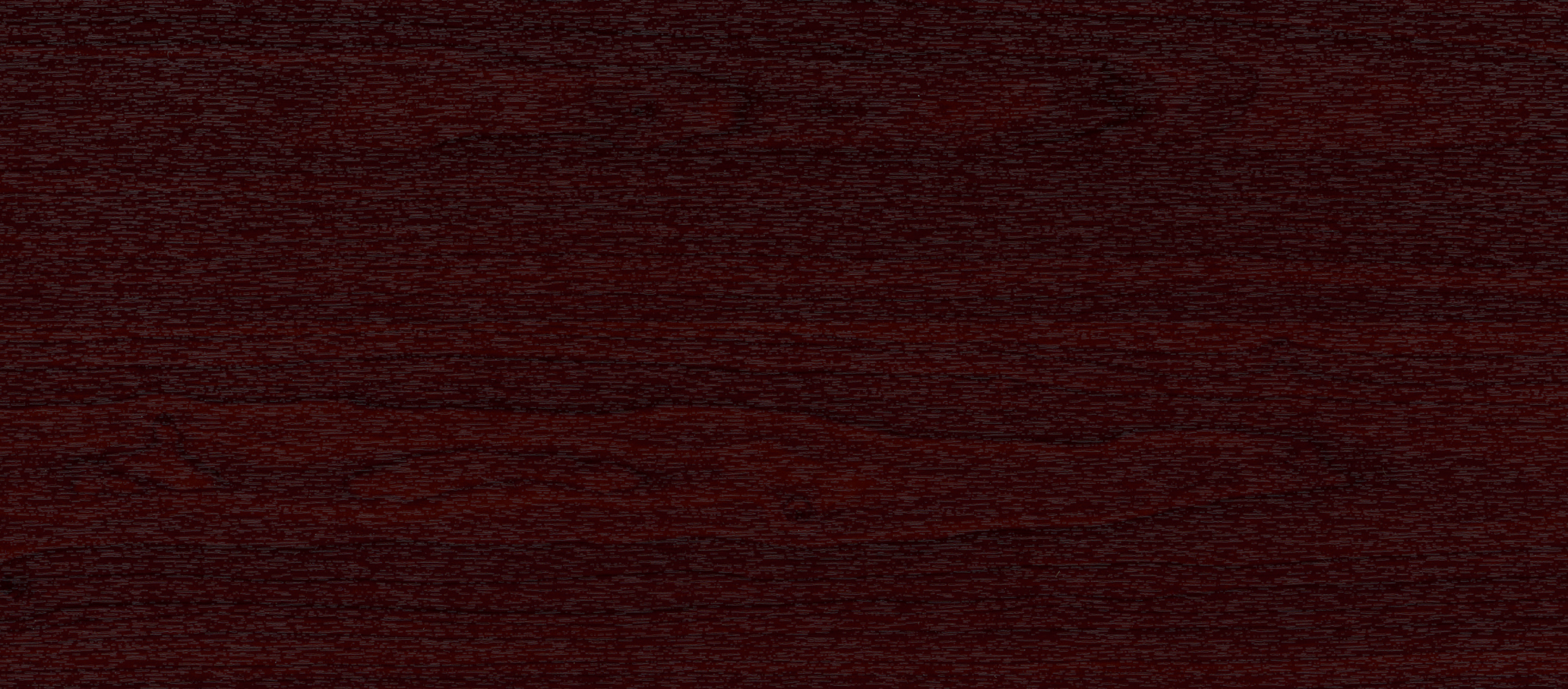


## MACORE

Reddish brown with a contrasting straight grain and a soft, natural luster.







## BLACK CHERRY

A deep, dark reddish brown with an even texture.

“Whether it’s for new home construction or a renovation, the Canvas Series can transform a dull space into something that looks like a million bucks.”

– Ken Keirns

JFS Construction, Tampa FL





## WEATHERED GREY

A reclaimed look with good contrast and varied texture.









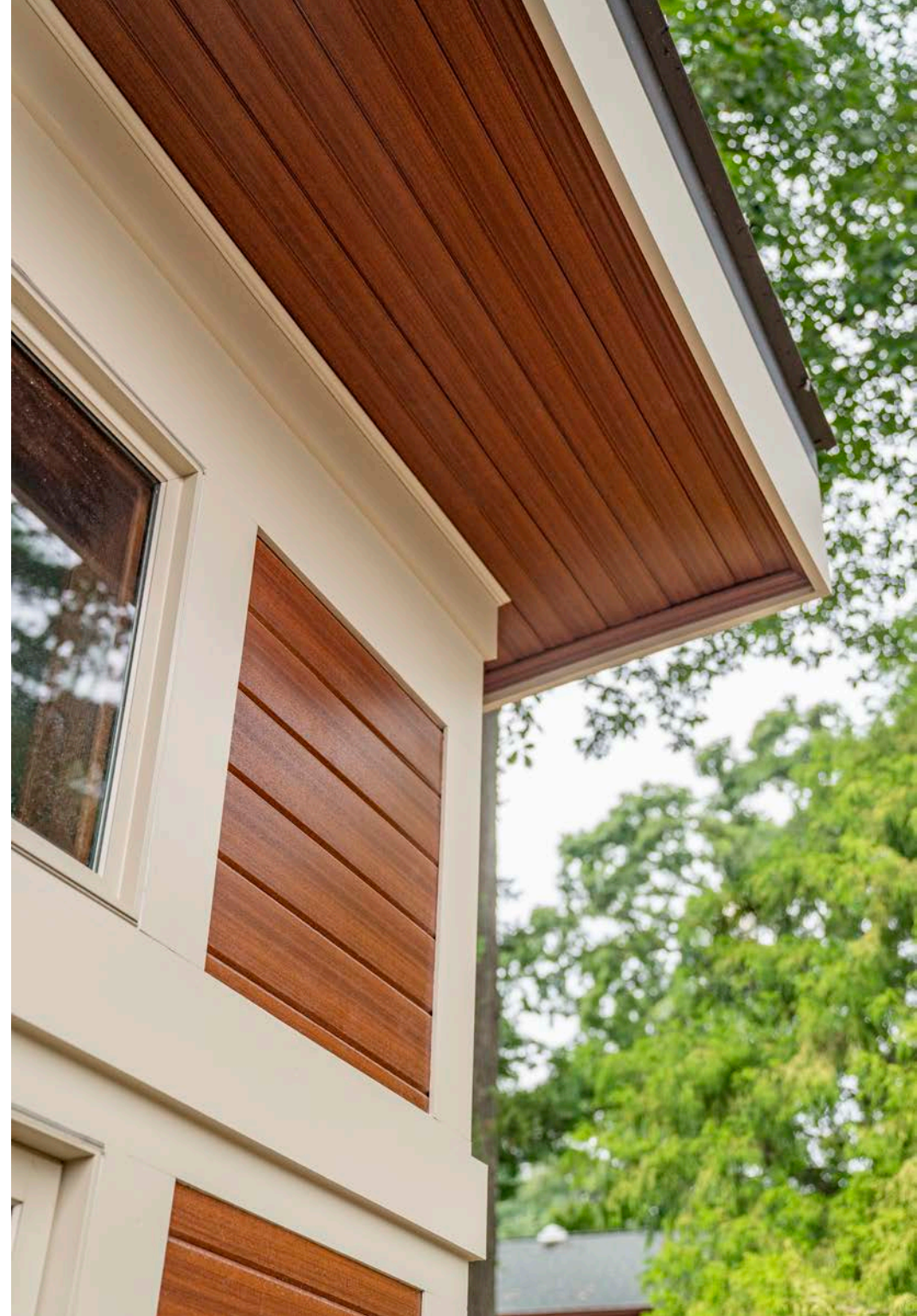
## KITAMI

Dark, scorched finish with stunning richness and natural luster.



## ENDLESS POSSIBILITIES

The Canvas Series can be installed anywhere traditional materials can, such as porch ceilings, soffit, accent walls, outdoor fences, showers and more. Bring your projects to life while having confidence in a high-quality, maintenance-free product.



# FINISHING GUIDE

For a more natural look, VERSATEX recommends mixing up Canvas boards so wood grains vary when installed. This prevents identical boards being placed directly next to each other.

VERSATEX also suggests staggering seams during installation. This keeps application strong; seams are traditionally weaker points, but staggering them adds stability. This also keeps your eye seeing the Canvas grain instead of focusing on a straight line of seams.

Canvas Series laminates do not fold over the cut ends of the product. In order to cover any white seams that may show once installation/contraction is complete, VERSATEX offers color-matched end coatings in dauber form to help cover up any and all white seams. Coatings are available for all colors. VERSATEX recommends applying end coatings before installation.

## VZCLIP

VERSATEX's VZClip fastener speeds up and simplifies the installation of 3/4" trim profiles, which includes the Canvas Series' WP4 profile. VZClips slide over the nailing flange and secure to wall studs/ceiling joists using #8 galvanized or steel screws. Test-site data shows that installing with VZClips keep VERSATEX firmly in place even at wind loads over 125 mph.

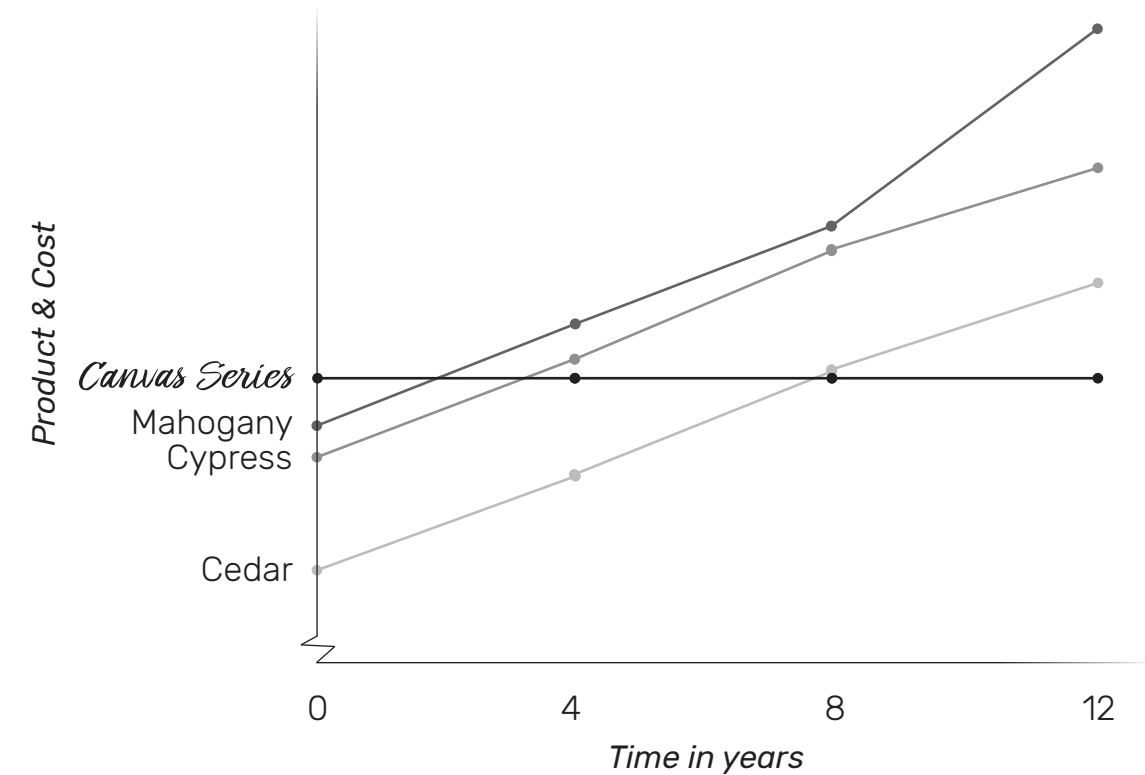
A message from VERSATEX's founder and president, John Pace: "Our team has never liked the idea of running fasteners through the face of a trimboard that's designed for lasting good looks. The traditional alternative – securing T&G with a nail through the tongue or groove – is time-consuming and doesn't achieve the holding power we're looking for, especially in a coastal environment."

For all cleaning and installation guidelines, including using Canvas Series as siding, please visit [versatex.com/canvas](http://versatex.com/canvas).



# CONTINUOUS VALUE

When comparing Canvas Series products to premium-grade lumber that requires hefty prices to re-stain and seal every 3-4 years, the choice is clear. No re-staining or upkeep is required to maintain the Canvas Series' stunning grains. Enjoy durable, maintenance-free, long-lasting value for years to come.



# WARRANTY

At VERSATEX, products are created from cellular PVC in a state-of-the-art manufacturing facility with the highest level of quality and feature a fully-transferable limited lifetime warranty. Regarding Canvas Series Products, VERSATEX warrants to the Consumer/Purchaser that the film laminate will not discolor beyond the manufacturer's tolerances ( $\leq$  greyscale 3 - ISO 105-A02) for 12 years from the date of original purchase. Furthermore, VERSATEX warrants to the Consumer/Purchaser that the application of the film onto the underlying PVC substrate be free from manufacturing defects for 12 years from the date of original purchase.

The laminate achieves excellent values in the reduction of heat build-up and weathering. Ideally suited for all-weather environments, but fully suited for hot climate zones.



Scan for samples

# Canvas Series



WP4



Stealth Beadboard



4" Crown



Bed Mould

A product of **VERSATEX Building Products**,  
 A wholly owned subsidiary of The Azek Company  
 400 Steel Street | Aliquippa, PA 15001  
 724.857.1111 | versatex.com



A big "thank you" to the builders whose craftsmanship is featured in this brochure.



Product images are for illustration purposes and can be changed at any time without notice.