

# VERSAWRAP™

The perfect solution for wrapping posts.



**VERSATEX®**  
BUILDING PRODUCTS

# ONE-PIECE WRAPS



VERSATEX sheet product with pre-mitered grooves and an interlocking friction-fit joint creates effortless alignment and a higher aesthetic value than matching up four individual pieces. When it comes to a lally column, support beams, front porch posts or anything in between, wrapping posts can now be a one-man install with a nicer end product than ever before.

Nominal	Actual Inside	Actual Outside
4 x 4 x 8'6"	3 3/4" x 3 3/4" x 8'6"	4 3/4" x 4 3/4" x 8'6"
4 x 4 x 10'	3 3/4" x 3 3/4" x 10'	4 3/4" x 4 3/4" x 10'
6 x 6 x 8'6"	5 3/4" x 5 3/4" x 8'6"	6 3/4" x 6 3/4" x 8'6"
6 x 6 x 10'	5 3/4" x 5 3/4" x 10'	6 3/4" x 6 3/4" x 10'
8 x 8 x 8'6"	8 1/2" x 8 1/2" x 8'6"	9 1/2" x 9 1/2" x 8'6"
8 x 8 x 10'	8 1/2" x 8 1/2" x 10'	9 1/2" x 9 1/2" x 10'
12 x 12 x 12'	9 3/4" x 9 3/4" x 12'	11 1/4" x 11 1/4" x 12'

- Special 10" Classic wraps available (minimum quantities apply)
- All 4", 6" and 8" VERSAWRAPs are made from actual 1/2" thick VERSATEX; 12" wraps are made from actual 3/4" thick VERSATEX
- Raised Panel wraps available in all 6" x 6" and 8" x 8" profiles
- Raised Panels start 16 1/2" from bottom with a railing gap from 30 3/4" to 30 1/2"; Clearance above top panel measures 8 3/4"
- Painting of Raised Panel wraps is recommended for best aesthetic results and to prevent dirt accumulation where panels are milled into product



Classic Wrap



Raised Panel

# INSTALLATION GUIDE

## Classic & Raised Panel Installs

**STEP 1:** Ensure the structural post is sound, straight, and true. If necessary, install thin furring strips or shims (insulation board) to the structural column approximately 4" down from the top center and approximately 4" up from the bottom so that the wrap fits tightly around the structural column/post. Shim all four sides evenly to maintain an equal spacing around the column/post. Be sure the outside dimensions of the furred/shimmed strips are no wider than the inside dimension of the VERSAWRAP column wrap.

**STEP 2:** Apply an adhesive that offers enough cure/working time so it can be applied in the four joints and wrapped around the structural column/post before curing. PVC glues with solvent work well, provided you apply them quickly. PVC adhesives such as Weld-On 705, Christy's Red Hot, or TrimWelder White Hot are a few recommended solvent-based PVC adhesives. Remember to apply the adhesive to only one surface of the miter lock joints. **NOTE:** Four VERSAWRAPs can be glued using one 5-oz tube of Weld-On 705 regardless of column length.

**STEP 3:** Once the glue is placed in the VERSAWRAP joints, immediately place it around the structural column or post, pushing the miter lock joint together. Using hand pressure, make sure the locking tongue is properly inserted into the locking groove before completely closing the joint. Close the VERSAWRAP joint with a piece of scrap PVC trim and a dead blow hammer. Strike the wrap over the joint, not to the right of it, especially during periods of cold weather. If necessary, take a sanding block with 320 grit sand paper and lightly sand the lockmiter joint to smooth out any rough spots.

**STEP 4:** Secure the VERSAWRAP column wrap to the structural column using stainless steel nails that penetrate through the furring strips to the structural post. **Remove the tape from the corners no more than 4 hours after installation.**

**STEP 5:** To remove the tape, be sure the entire width of tape has been lifted across the top before pulling it down the column. If you try to pull the tape down by starting at only one corner, the tape will split into thin slivers. When the tape is started evenly across its entire width and slowly pulled down the column wrap, it will pull off in one piece. **NOTE:** Leaving the tape on the column wrap and exposed to the UV rays of the sun for more than 24 hours will make it difficult to remove and may leave adhesive residue on the column wrap.

**TIPS:** Mild cleaners or a solvent can be used to remove any residual adhesive resulting from leaving the tape on the column wrap for an extended period of time. Use a hair dryer to help remove the tape at temperatures below 40°F.



## Enhance an already perfect install.

VERSATEX offers all the accessories one needs to take their project to the next level. Base Cap, Bed Moulding and 4" Crown Moulding kits are all available, while Bed Moulding and 4" Crown Moulding XL kits are available to dress up accent wraps made from actual 1/2" VERSATEX. All accessories are pre-mitered, cut to length and ready for an easy assembly and a snug fit around a 4", 6" or 8" VERSAWRAP. Post Caps are also available for 4", 6" and 8" VERSAWRAPs. All accessories sold separately.

### Accent Wrap

*Nominal    Actual Inside Dimension*

4 x 4 x 10    4 3/4" x 4 3/4" x 10"

6 x 6 x 10    6 3/4" x 6 3/4" x 10"

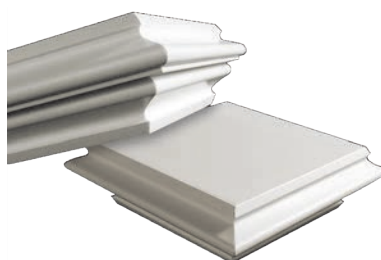
8 x 8 x 10    9 1/2" x 9 1/2" x 10"

4 x 4 x 10'    4 3/4" x 4 3/4" x 10'

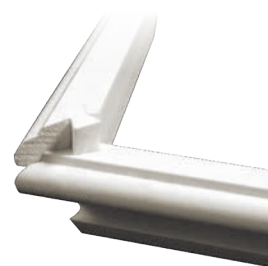
- Nominal 10 x 10 x 10' Accent Wraps are available in "UNIT" quantities
- Add 1" to inside dimensions to calculate outside measurements



Moulding Kits



Post Caps



All accessories feature easy to assemble Dovetail Connectors

# FOUR-PIECE WRAPS



Actual 5' 6'

12" base – 8" cap • •

16" base – 12" cap • •

• Fastening angles and 3 1/2" decorative accent wrap pieces are included with tapered wrap

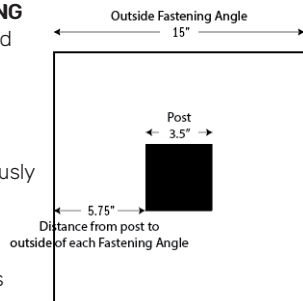
Tapered Column  
Accent Wrap  
Fastening Angles



## Tapered Installs

*Subtract the size of your post from the outside bottom Fastening Angle and divide by two to determine the space between your post and the outside edge of the Fastening Angle.*

- 1) Position and screw one small (top) Fastening Angle to the header structure at the top of your structural post, ensuring you measure the distance from the post for centering. We recommend 1/2" screws through the pilot holes on each Fastening Angle.
- 2) If you need to shorten your tapered column, measure and cut each of the four Panels, **REMOVING MATERIAL FROM THE BOTTOM ONLY** and resize the two large (bottom) Fastening Angles to fit the new Panel width.
- 3) Position and screw one bottom (large) Fastening Angle to your floor/pedestal structure on the same sides as the previously secured top (small) Fastening Angle.
- 4) On a clean work surface, place one Panel with female locking joints facing up and apply PVC adhesive in the grooves on either side.



# INSTALLATION GUIDE

- Align each of the male locking joint Panels into the grooves and, using a rubber mallet against the Panel side (**not directly on the open joint**), ensure the Panels fully engage. (see picture)
- 5) Take this three-sided wrap and place it around your column, fitting it tightly against the previously installed Fastening Angles.
  - 6) Apply glue to the remaining Panel and complete the wrap, again tapping gently with a mallet to fully engage the joints.
  - 7) Align the remaining Fastening Angles tight to prevent movement of the wrap and screw them into place through the pilot holes.

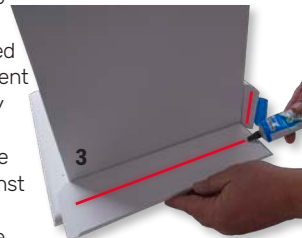


## INSTALLING THE OPTIONAL ACCENT WRAP

*The key to installing the Accent Wrap at the top and bottom of your column wrap is alignment with the panels.*

\*Remember that if you modified the height of your column, the length of the large Accent Wrap pieces will also need to be shortened to match the new bottom width.

- 1) **A:** Align and tape the outside surfaces of two matching Accent Wrap Pieces, ensuring the angled edges are touching under the tape.
- B:** Apply PVC adhesive to the inside flat surface of one Accent Wrap Piece (not the angled joint).
- 2) Fold the two Pieces together and align with the panel while holding the skirt joint at a 90° angle. Apply pressure and pin nail the piece you applied glue to into place. We recommend two pin nails approximately 3" from each end.
- 3) Peel back the tape from only the unfastened Piece, leaving it attached to the fastened Accent Wrap Piece. Hinge the unfastened Piece away from the column at the taped joint and apply PVC adhesive to **ONE SIDE** of the joint and the inside surface before pressing it in place against the column and pin nailing. Replace the tape over the corner to hold the joint tight while the glue continues to dry.
- 4) Align the third Accent Wrap Piece, adding tape to the edge that will meet the installed Piece, and repeat the gluing and nailing process. Repeat again for the last Piece. The same process can be followed at both the top and bottom of your column.



\*Wait approximately 10-15 minutes before removing the masking tape from the Accent Wrap Pieces to ensure the adhesive has cured.

We recommend that your completed column be painted due to open cells left by the milling process on the Fastening Angles and Accent Wrap Pieces. Alternately, these individual pieces can be painted prior to installation.



# VERSAWRAP™

**VERSATEX®**  
**BUILDING PRODUCTS**



*A product of*  
VERSATEX Building Products  
400 Steel Street, Aliquippa, PA 15001  
724.857.1111 [versatex.com](http://versatex.com)

