

WILSONARTWOODGRAINS™

---

# The *smarter* way to do wood.

Wilsonart Woodgrains offer unmatched performance over wood veneer throughout the lifespan of your design, powered by our proprietary AEON™ Enhanced Scratch- & Scuff- Resistant Performance Technology. Our woodgrains are rigorously tested to prove their durability throughout delivery, fabrication, installation, and beyond — so you can get the beautiful look of wood that lasts.



COMPARED TO WOOD VENEER, WILSONART WOODGRAINS ARE UP TO:

- | **16X more** wear resistant
- | **2X more** scuff resistant
- | **9X more** dent resistant
- | **7X more** crack resistant
- | **4X more** scratch resistant
- | **3X more** cleanable



# Up to 16X more wear resistant than wood veneer

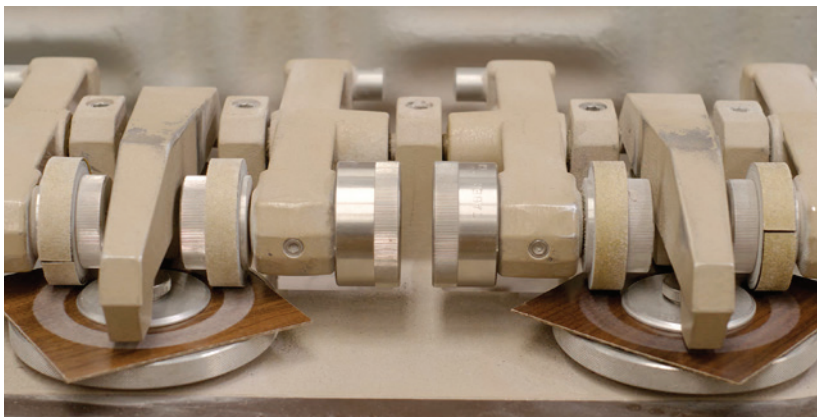


## The test

A pair of loaded cylindrical wheels with an abrasive are rotated against the surface. The number of rotations dictates the amount of wear.

### ABRASIVE WHEEL ROTATION TEST

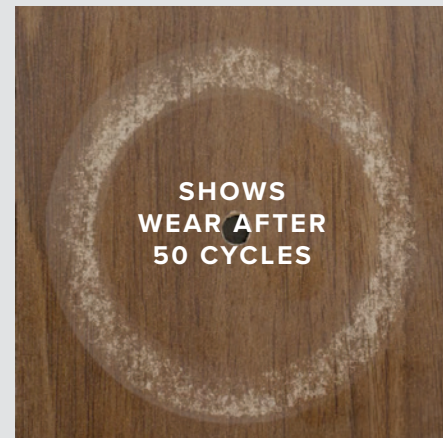
ISO 4586-2 (11) (CYCLES)



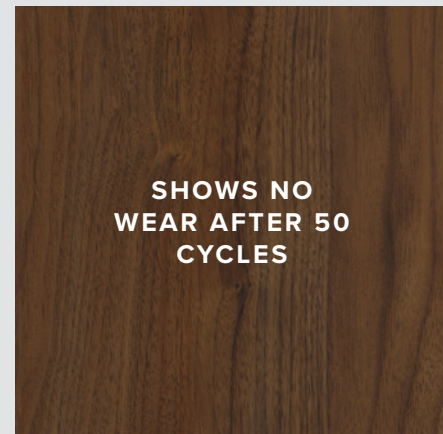
## The result

Wilsonart Woodgrains with AEON™ Technology stand up 16X better against wear in high-touch areas, including tabletops, work tops, and check-in counters.

### WOOD VENEER



### WILSONART HPL



#### MATERIAL

#### CYCLES\*

Wood veneer range

**50-75**

Standard HPL range

**400-700**

Premium HPL range  
With AEON™ Technology

**800-1200**

Test run on Wilsonart Woodgrains product type 350 against wood veneer sheets.  
Performance results are a range based on HPL Woodgrains finish and veneer topcoat.

\*Indicates number of abrasive cycles before wear begins to show.



# Up to 9X more dent resistant than wood veneer



## The test

A stainless steel ball is dropped on the surface from varying heights until denting appears.

### BALL IMPACT DENT TEST

MATERIAL	DROP HEIGHT (MM)*
Wood veneer range	50
Wilsonart HPL range	300-450

*Test run on Wilsonart Woodgrains product type 350 against wood veneer sheets. Performance results are a range based on HPL Woodgrains finish and veneer topcoat.*

*\*Indicates how high ball must be dropped from to create a dent.*



## The result

Wilsonart Woodgrains stand up 9X better against dropped plates and cutlery, denting from moved furniture, and more.

### WOOD VENEER



### WILSONART HPL



# Up to 4X more scratch resistant than wood veneer

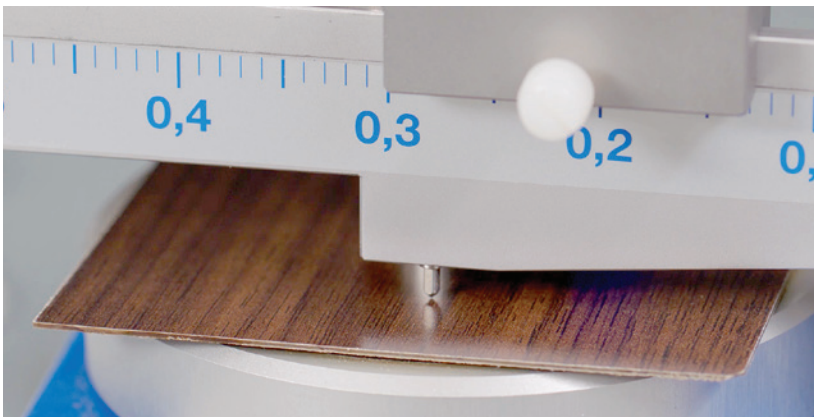


## The test

A diamond tip stylus is used to create a continuous scratch along the surface at increasing pressure from 1.0N to 6.0N. The load at which the stylus no longer produces a scratch is the resistance.

### DIAMOND TIP ROTATION TEST

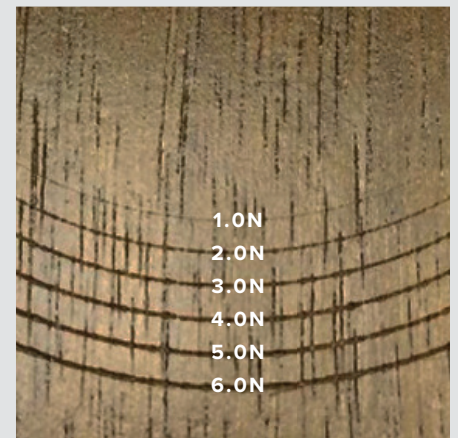
ISO 4586-2 (29)



## The result

Wilsonart Woodgrains stand up 4X better against heavy shifting furniture, sharp corners, and more.

### WOOD VENEER



### WILSONART HPL



One newton (N) is the force needed to accelerate one kilogram of mass at the rate of one metre per second squared in the direction of the applied force.

### MATERIAL

### PERFORMANCE RATING\*

Wood veneer range

1

Wilsonart HPL range

4-5

Test run on Wilsonart Woodgrains product type 350 against wood veneer sheets. Performance results are a range based on HPL Woodgrains finish and veneer topcoat.

\* Scale of 1-5 | 5 is best



# Up to 2X more scuff resistant than wood veneer



## The test

An abrasive pad is dragged along the surface 200 times at a specific pressure. The scuff resistance is determined by the severity of damage to the surface.

### ABRASIVE PAD SCUFF TEST



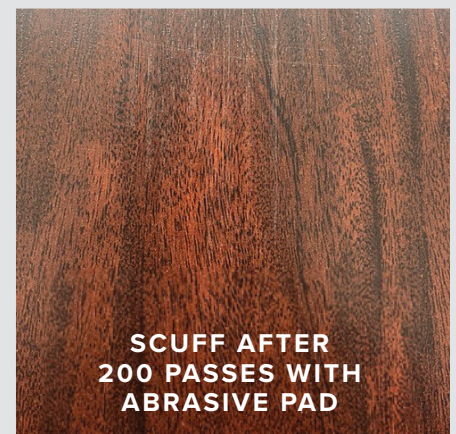
## The result

Wilsonart Woodgrains stand up 2X better against shopping carts, wheels, rough surfaces, and more.

### WOOD VENEER



### WILSONART PREMIUM HPL WITH AEON TECHNOLOGY



#### MATERIAL

#### PERFORMANCE RATING\*

Wood veneer range

1

Standard HPL range

1

Premium HPL range  
With AEON™ Technology

2-3

*Test run on Wilsonart Woodgrains product type 350 against wood veneer sheets.  
Performance results are a range based on HPL Woodgrains finish and veneer topcoat.*

*\*Scale of 1-4 | 4 is best*



# Up to 7X more crack resistant than wood veneer

## BALL IMPACT CRACK TEST

ISO 4586-2 (25)

MATERIAL	DROP HEIGHT (MM)*
Wood veneer range	100-125
Wilsonart HPL range	700-900

Test run on Wilsonart Woodgrains product type 350 against wood veneer sheets. Performance results are a range based on HPL Woodgrains finish and veneer topcoat.

\*Indicates how high ball must be dropped from to create a crack

### The test

A stainless steel ball is dropped on the surface from varying heights until cracking appears.

### The result

Wilsonart Woodgrains stand up 7X better against heavy packages dropped from a height, items falling from shelves, and more.

# Up to 3X more cleanable than wood veneer

## HOUSEHOLD PRODUCTS CLEANING TEST

ISO 4586-2 (31)

MATERIAL	SUM OF RATING* Lower rating = more cleanable surface
Wood veneer range	13-28
Wilsonart HPL range	9-13

Test run on Wilsonart Woodgrains product type 350 against wood veneer sheets. Performance results are a range based on HPL Woodgrains finish and veneer topcoat.

\*Pass <20. The lower the rating, the more cleanable the surface is.

### The test

A variety of household products are used to measure how easily spills and goods can be removed from the surface.

### The result

Wilsonart Woodgrains stand up 3X better against coffee grounds, ketchup, and a variety of other substances\*\* for an easy clean up.

\*\*Substances tested: distilled water, 50:50 Ethyl Alcohol, Acetone, Household Ammonia, 10% Citric Acid, Vegetable Oil, Fresh Coffee, Fresh Tea, Ketchup, Yellow Mustard, 10% Povidone Iodine, Black Permanent Marker, #2 Pencil, Wax Crayon, Black Paste Shoe Polish.

