

FURNITURE FOR THE
**FLEXIBLE
WORKPLACE**



**FOR CREATIVE
& SUSTAINABLE PEOPLE**

MATTING



Flexible and healthy – without electricity

Matting Interior always puts health and well-being first. We have accumulated a lot of experience and knowledge over the past 50 years.

We want the environments we live in every day – in the office, at home, at school – to enable us to be active, to contribute to creative and sustainable people.

Our height adjustable desks series without electricity are available in several models, sizes and are made in Sweden. The desks are raised and lowered easily, quickly and silently with a gas spring or crank mechanism. Designed by Dan Ihreborn.



StandUp DESK

A desk designed for tomorrow's agile workstations, home offices and learning environments. The flexible, versatile desks makes furnishing and placement very easy and without electricity a guarantee for the future in a sustainable way. The desk is raised and lowered by a gas spring controlled by a lever at the side. Available in three sizes; 700, 900 and 1200. Minimum height 75 cm; maximum 119 cm.



*Made in Småland, Sweden, from sustainable materials;
design by Dan Ihreborn.*





StandUp TRAPETS

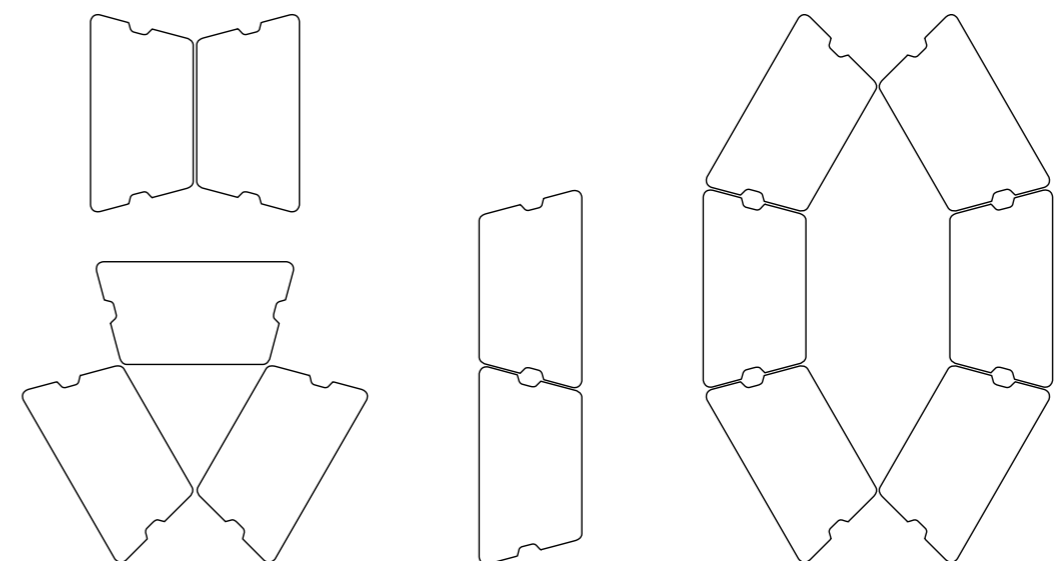
TRAPETS is designed for agile workstations, group combinations, co-working spaces, conference spaces and learning environments. The trapezoidal design of the desktop is specially designed for flexible construction, allowing as much desk space as possible to be created over a small area, thereby saving floorspace. The shape of the desktop is also ideal for a corner location.

Manual height adjustment (no power supply necessary) makes furnishing and placement very easy. The desk is raised and lowered by a gas spring controlled by a lever at the side. Minimum height 75 cm; maximum 119 cm.



Made in Småland, Sweden, from sustainable materials; design by Dan Ihreborn.

Arrangement suggestions



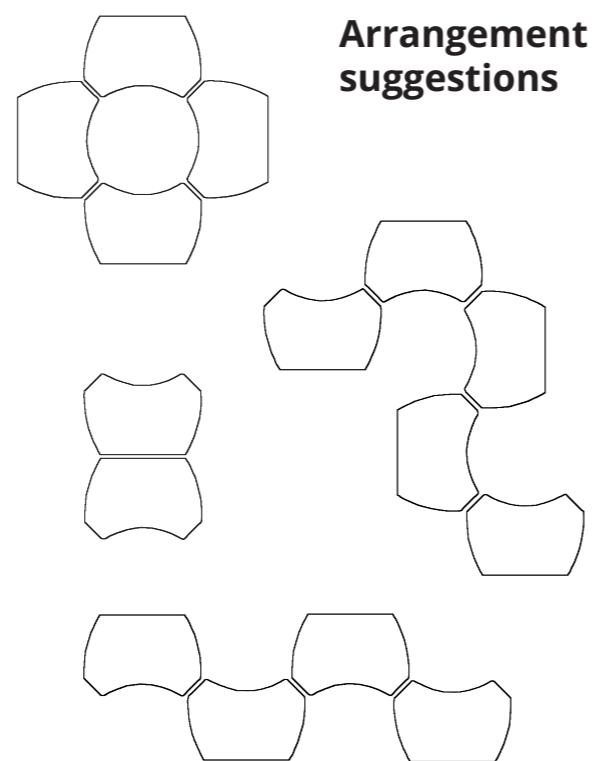


*Made in Småland, Sweden, from sustainable materials;
design by Dan Ihreborn.*



StandUp BLOSSOM

BLOSSOM is part of our height-adjustable, manually operated StandUp desk series. These desks have been designed to “bloom” in various configurations. The desktop can be turned in two different directions to create group desks, project surfaces and various room-adapted configurations, and can be moved around as needed. The same desk can be used both as an individual desk or for forming group desks. The desk is suitable for the workplace, in conference areas or in the classroom.



StandUp T

StandUp T height-adjustable desks are easily and quickly raised and lowered using a sophisticated crank mechanism. This, together with their light weight, makes them very easy to place and easy to furnish. They are designed with sustainability in mind, with no cords or environmentally harmful batteries. T stands are made in Sweden from sustainable materials. All parts are replaceable for long life.

StandUp T has a stroke length of 45 cm, 71-116 cm, and a T-shaped design. Due to its stable construction, the desk can also withstand high loads and with its larger work surface it is ideal for the fixed workplace. The desk is easy to equip with monitor arms or desk screens.

StandUp T is available in 1200 or 1400 mm, with desktops from 1200 -1500 mm.



*Made in Småland, Sweden,
from sustainable materials;
design by Dan Ihreborn.*





StandUp DESK FIX

In order to create a complete interior with our StandUp DESK collection, we have, in addition to our height-adjustable stands, also bases with fixed height dimensions. DESK FIX is the newcomer in our extended range of fixed desk frames in three different widths and two heights. The desks are suitable for the workplace, home office or classroom as a bench, group or teacher's desk.

The design is exactly the same as our height-adjustable tables, with the difference being that the table does not have the height-adjustable top, but otherwise with the same high quality. DESK FIX frames are available in three models; 700, 900 and 1200 and in two fixed heights 680 mm and 880 mm.

Our StandUp desk collections are designed to be sustainable for nature and man, with a low CO₂ footprint and circular design for a long life. The desks are lightweight and all parts are replaceable components to make the desk last for generations.



*Made in Småland, Sweden,
from sustainable materials;
design by Dan Ihreborn.*

StandUp MINIDESK

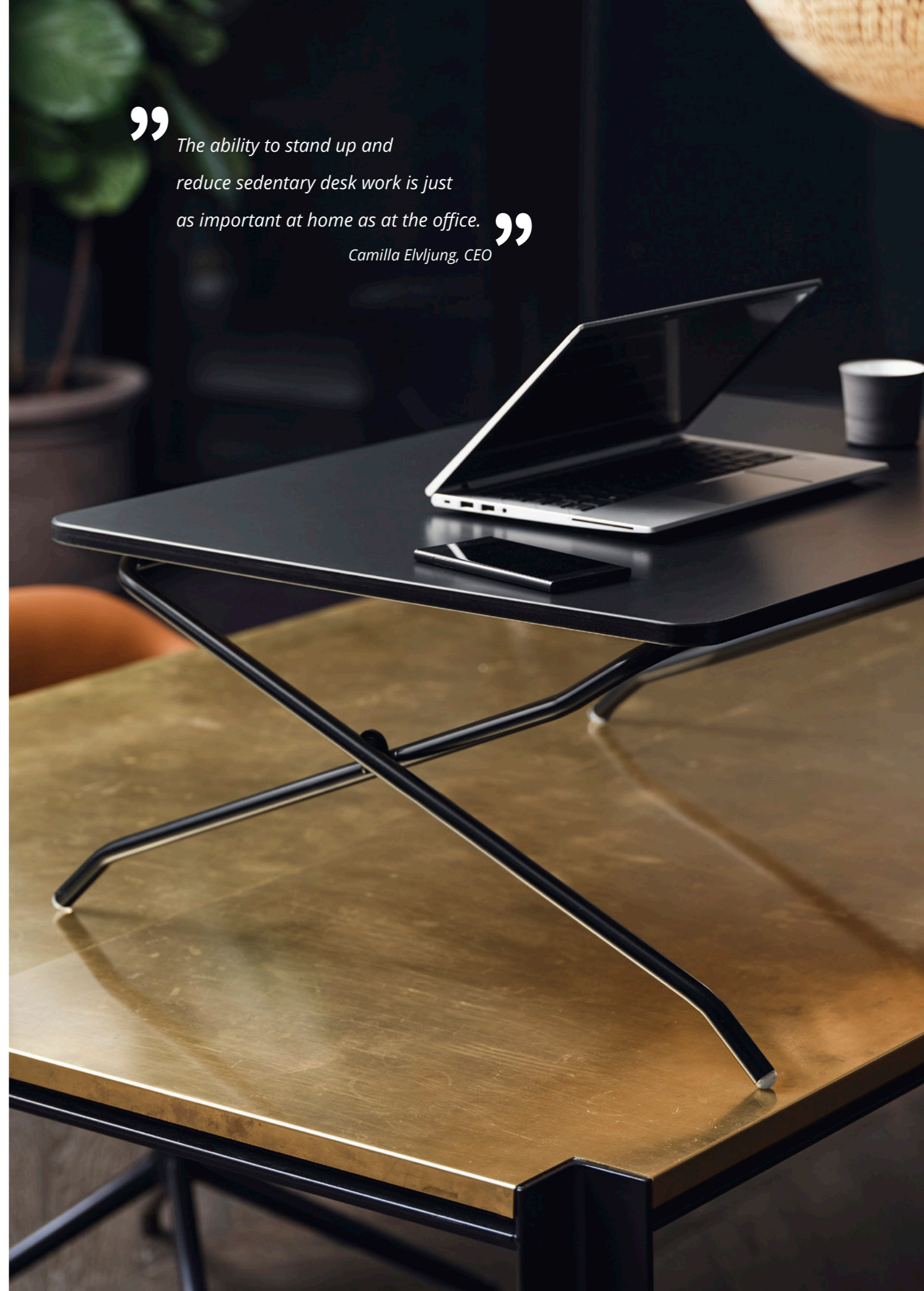
MINIDESK is a neat, movable, manually height-adjustable desk designed for the home workplace. The desk is designed to suit your home environment and make it possible to adjust your working height even on a firm surface. Minidesk's six different working positions make it easy to raise and lower the desktop and adapt your working position before starting work. Minidesk is easy to collapse and stow away.



*Made in Småland, Sweden, from sustainable materials;
design by Dan Ihreborn.*



” *The ability to stand up and
reduce sedentary desk work is just
as important at home as at the office.* ”
Camilla Elvbjerg, CEO



StandUp CHOICE

StandUp CHOICE is a completely new chair concept, with new-generation design in its function and aesthetics. CHOICE was developed for simplicity and convenience. To make it easy to switch between standing and resting, for healthy, more active everyday life. With its timeless, Scandinavian design, CHOICE goes well in many different settings. Made in Småland, Sweden, from sustainable materials; design Dan Ihreborn.



”
“Developing a product without a vision for the future does not move our thinking forward, but is merely a reiteration of the same old requirements.”
Designer Dan Ihreborn



StandUp CHOICE – function for long life

With its movable seat and adjustable seat height, StandUp CHOICE makes it easy to switch between standing and resting. CHOICE chairs are stackable and easily moved aside. The flexible seating counteracts a static sitting posture and makes it very ergonomic. An optional upholstered seat is available in several fabrics and colours. CHOICE chairs are made in Sweden.



*Made in Småland, Sweden, from sustainable materials;
design by Dan Ihreborn.*

StandUp CHOICE seat cushion

StandUp CHOICE seat cushion is a removable upholstered seat for the CHOICE chair for additional comfort. The cushion attaches easily with hook-and-loop fastening and comes in a number of fabrics and colours as standard.

The foam in the seat is replaceable for long life and circular flow. CHOICE seat cushion is available in more colours and fabrics, both from our stocked range and our selected special-order range. Other fabrics are also available by special order.



Made in Småland, Sweden, from sustainable materials; design by Dan Ithreborn.



Tips!

StandUp ACTIVE STORAGE can accommodate around 6 StandUp mats.

StandUp SCREEN desk partitions can be hung from the rod; space for 4 pcs.

StandUp ACTIVE balance board can be hung from the rod, stored on a shelf or in a side compartment.

StandUp ACTIVE balance mat can be stored on a shelf or in a side compartment.

StandUp ACTIVE training mat can be stored on a shelf or in a side compartment.



StandUp ACTIVE STORAGE

ACTIVE STORAGE provides storage for the active workstation. Designed to make storage of StandUp products easy in the activity-based office, co-working spaces and public areas. Active Storage makes products easily accessible. The open design was consciously chosen to make the products visible from a distance, thus stimulating and motivating use to reduce sedentary desk work at the office and promote well-being.

StandUp Active Storage comes with smooth-rolling castors, making for flexible storage that is easily move around, which also makes cleaning easier. The storage is available in various versions. The basic version comes with two shelves, a rod from which to hang items, and side compartments. A storage drawer is also available for the middle shelf, with or without lock.

*Made in Småland, Sweden, from sustainable materials;
design by Dan Ihreborn.*



StandUp ACTIVE STORAGE can also be used for general storage.

Designer Dan Ihreborn

Dan Ihreborn has worked as a freelance designer since 1991. He works with modern furniture design and as an interior designer he specialises in office environments. With 45 years in the industry, Dan has extensive experience and understands how furniture has changed over the years.

The collaboration with Matting has been ongoing since 2015. Dan Ihreborn's design assignments include StandUp DESK, StandUp ACTIVE STORAGE, StandUp HANGER and Jobmate TOUCH.



About Matting

Matting is a family-owned niche company. Through our expertise, commitment and cutting-edge product development, we offer sustainable concepts and products for public spaces, workplaces and schools.

Our concepts are developed in close cooperation with designers and experts, with a clear focus on sustainability and sustainable people. Matting Interior always puts health and well-being first. We have accumulated a lot of experience and knowledge over the past 50 years. Our vision is about sustainable people.



We want the environments we live in every day – in the office, at home, at school – to enable us to be active, to contribute to creative and sustainable people. With the next generation in mind, we place great focus and value on our sustainability efforts.

MATTING

Matting AB. Box 514, SE-441 15 Alingsås, Sweden.
Telephone: +46 322 67 08 00, Email: info@matting.se
www.matting.se