



**CABLE TRAY
ENGINEERING**



OBPlast OBP
PVC CABLE TRAYS

WWW.OB-PROFILS.COM



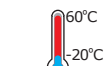
UNE-EN 61537
UNE-EN 50085



UNE-EN 61537
UNE-EN 50085
UNE 23727
UL94



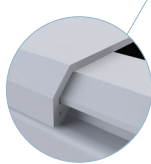
UNE-EN 60695



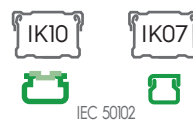
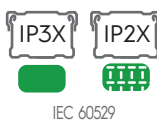
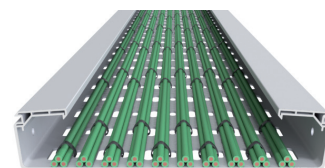
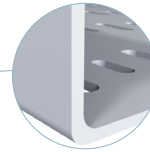
UNE-EN 61537



UNE-EN 50085



OB-Plast



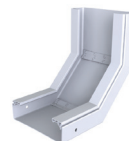
COBP



CPOBP



CCPOBP



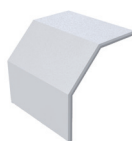
CCOBP



CCCOBP



CXOBP



CCXOBP



DOBP



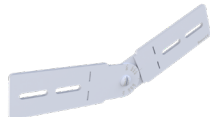
TFOB



CSOB



EOBP



ECOBP-AB

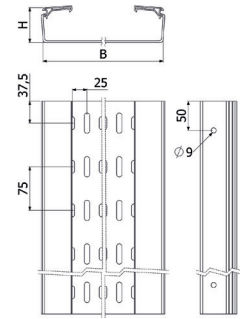


BOBP

Ob-Plast OBP2 / H60



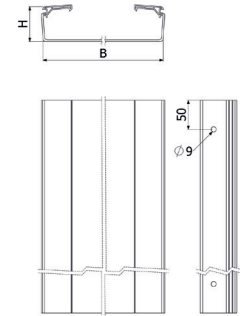
| 3m (10ft) | H | | B | | 7035 | |
|-------------|----|--------|-----|------|----------|------|
| | mm | inch | mm | inch | PVCM1 UV | KG/M |
| OBP2 60X100 | 60 | 2 3/8" | 100 | 4" | 560100UV | 0.73 |
| OBP2 60X150 | 60 | 2 3/8" | 150 | 6" | 560150UV | 0.98 |
| OBP2 60X200 | 60 | 2 3/8" | 200 | 8" | 560200UV | 1.45 |
| OBP2 60X300 | 60 | 2 3/8" | 300 | 12" | 560300UV | 2.34 |



Ob-Plast OBP2-G / H60



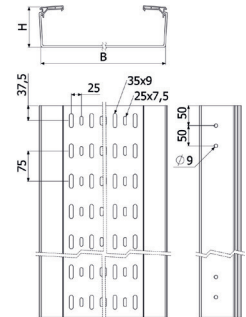
| 3m (10ft) | H | | B | | 7035 | |
|---------------|----|--------|-----|------|----------|------|
| | mm | inch | mm | inch | PVCM1 UV | KG/M |
| OBP2-G 60X100 | 60 | 2 3/8" | 100 | 4" | 580100UV | 0.77 |
| OBP2-G 60X150 | 60 | 2 3/8" | 150 | 6" | 580150UV | 1.03 |
| OBP2-G 60X200 | 60 | 2 3/8" | 200 | 8" | 580200UV | 1.54 |
| OBP2-G 60X300 | 60 | 2 3/8" | 300 | 12" | 580300UV | 2.48 |



Ob-Plast OBP3 / H100



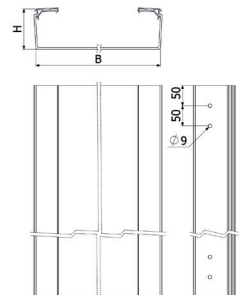
| 3m (10ft) | H | | B | | 7035 | |
|--------------|-----|------|-----|------|----------|------|
| | mm | inch | mm | inch | PVCM1 UV | KG/M |
| OBP3 100X200 | 100 | 4" | 200 | 8" | 510200UV | 2.25 |
| OBP3 100X300 | 100 | 4" | 300 | 12" | 510300UV | 3.63 |
| OBP3 100X400 | 100 | 4" | 400 | 16" | 510400UV | 4.30 |
| OBP3 100X600 | 100 | 4" | 600 | 24" | 510600UV | 6.40 |



Ob-Plast OBP3-G / H100



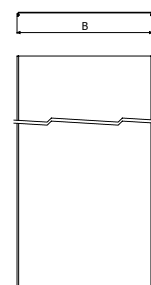
| 3m (10ft) | H | | B | | 7035 | |
|----------------|-----|------|-----|------|----------|------|
| | mm | inch | mm | inch | PVCM1 UV | KG/M |
| OBP3-G 100X200 | 100 | 4" | 200 | 8" | 597200UV | 2.38 |
| OBP3-G 100X300 | 100 | 4" | 300 | 12" | 597300UV | 3.45 |
| OBP3-G 100X400 | 100 | 4" | 400 | 16" | 597400UV | 4.54 |
| OBP3-G 100X600 | 100 | 4" | 600 | 24" | 597600UV | 6.72 |



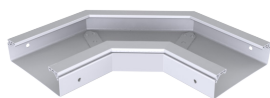
COVER COBP



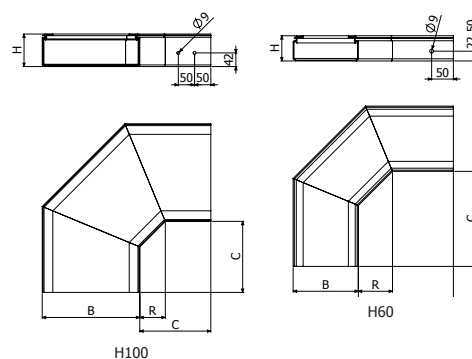
| 3m (10ft) | B | | 7035 | |
|-----------|-----|------|----------|------|
| | mm | inch | PVCM1 UV | KG/M |
| COBP 100 | 100 | 4" | 555100UV | 0.37 |
| COBP 150 | 150 | 6" | 555150UV | 0.50 |
| COBP 200 | 200 | 8" | 555200UV | 0.77 |
| COBP 300 | 300 | 12" | 555300UV | 1.10 |
| COBP 400 | 400 | 16" | 555400UV | 1.53 |
| COBP 600 | 600 | 24" | 555600UV | 2.10 |



90° FLAT ELBOW CPOBP



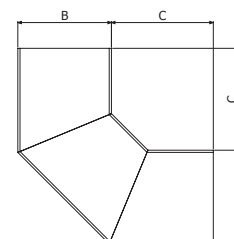
| CPOBP | H | | B | | 7035 | |
|---------------|-----|--------|-----|------|----------|-------|
| | mm | inch | mm | inch | PVCM1 UV | KG/UD |
| CPOBP 60X100 | 60 | 2 3/8" | 100 | 4" | 570110UV | 0.40 |
| CPOBP 60X150 | 60 | 2 3/8" | 150 | 6" | 570115UV | 0.54 |
| CPOBP 60X200 | 60 | 2 3/8" | 200 | 8" | 570120UV | 0.91 |
| CPOBP 60X300 | 60 | 2 3/8" | 300 | 12" | 570130UV | 1.61 |
| CPOBP 100X200 | 100 | 4" | 200 | 8" | 570220UV | 1.24 |
| CPOBP 100X300 | 100 | 4" | 300 | 12" | 570230UV | 2.14 |
| CPOBP 100X400 | 100 | 4" | 400 | 16" | 570240UV | 3.27 |
| CPOBP 100X600 | 100 | 4" | 600 | 24" | 570260UV | 4.08 |



90° FLAT ELBOW COVER CCPOBP



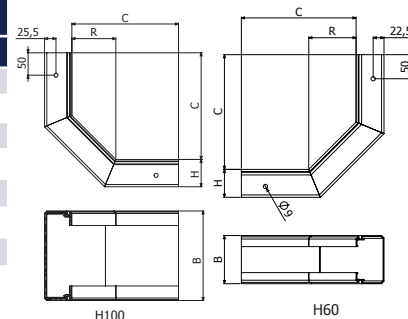
| CCPOBP | B | | C | | 7035 | |
|------------|-----|------|-----|--------|-----------|-------|
| | mm | inch | mm | inch | PVCM1 UV | KG/UD |
| CCPOBP 100 | 100 | 4" | 220 | 8 1/2" | 570110CUV | 0.18 |
| CCPOBP 150 | 150 | 6" | 220 | 8 1/2" | 570115CUV | 0.26 |
| CCPOBP 200 | 200 | 8" | 220 | 8 1/2" | 570120CUV | 0.43 |
| CCPOBP 300 | 300 | 12" | 220 | 8 1/2" | 570130CUV | 0.71 |
| CCPOBP 400 | 400 | 16" | 220 | 8 1/2" | 570140CUV | 1.12 |
| CCPOBP 600 | 600 | 24" | 240 | 9 1/2" | 570160CUV | 1.94 |



90° INSIDE ELBOW CCOBP



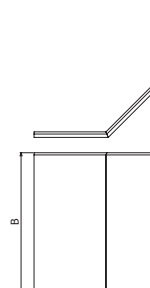
| CCOBP | H | | B | | R | | 7035 | |
|---------------|-----|--------|-----|------|-----|---------|------------|-------|
| | mm | inch | mm | inch | mm | inch | PVCM1 UV | KG/UD |
| CCOBP 60X100 | 60 | 2 3/8" | 100 | 4" | 240 | 9 1/2" | 570110-IUV | 0.39 |
| CCOBP 60X150 | 60 | 2 3/8" | 150 | 6" | 240 | 9 1/2" | 570115-IUV | 0.49 |
| CCOBP 60X200 | 60 | 2 3/8" | 200 | 8" | 240 | 9 1/2" | 570120-IUV | 0.78 |
| CCOBP 60X300 | 60 | 2 3/8" | 300 | 12" | 240 | 9 1/2" | 570130-IUV | 1.19 |
| CCOBP 100X200 | 100 | 4" | 200 | 8" | 275 | 10 3/8" | 570220-IUV | 1.37 |
| CCOBP 100X300 | 100 | 4" | 300 | 12" | 275 | 10 3/8" | 570230-IUV | 1.98 |
| CCOBP 100X400 | 100 | 4" | 400 | 16" | 275 | 10 3/8" | 570240-IUV | 2.55 |
| CCOBP 100X600 | 100 | 4" | 600 | 24" | 275 | 10 3/8" | 570260-IUV | 3.23 |



90° INSIDE ELBOW COVER CCCOBP



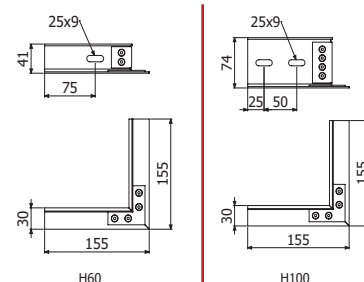
| CCCOBP | B | | 7035 | |
|----------------|-----|------|-------------|-------|
| | mm | inch | PVCM1 UV | KG/UD |
| CCCOBP 60X100 | 100 | 4" | 570110-ICUV | 0.18 |
| CCCOBP 60X150 | 150 | 6" | 570115-ICUV | 0.24 |
| CCCOBP 60X200 | 200 | 8" | 570120-ICUV | 0.37 |
| CCCOBP 60X300 | 300 | 12" | 570130-ICUV | 0.52 |
| CCCOBP 100X200 | 200 | 16" | 570220-ICUV | 0.56 |
| CCCOBP 100X300 | 300 | 12" | 570230-ICUV | 0.61 |
| CCCOBP 100X400 | 400 | 16" | 570240-ICUV | 0.81 |
| CCCOBP 100X600 | 600 | 24" | 570260-ICUV | 1.04 |



DERIVATION DOBP PVC



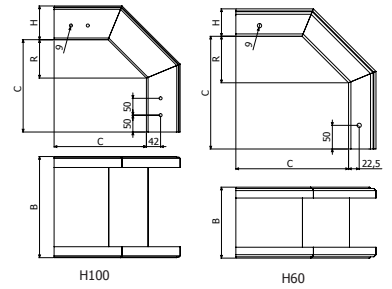
| DOBP | 7035 | |
|----------|--------------|-------|
| | PVCM1 UV | KG/UD |
| DOBP 60 | 595000-60UV | 0.24 |
| DOBP 100 | 595000-100UV | 0.48 |



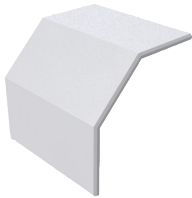
90° OUTSIDE ELBOW CXOBP



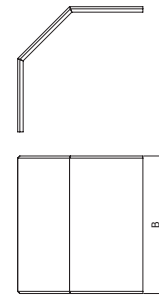
| CXOBP | H | | B | | R | | 7035 | |
|---------------|-----|--------|-----|------|-----|--------|------------|-------|
| | mm | inch | mm | inch | mm | inch | PVCM1 UV | KG/UD |
| CXOBP 60X100 | 60 | 2 3/8" | 100 | 4" | 100 | 4" | 570110-EUV | 0.39 |
| CXOBP 60X150 | 60 | 2 3/8" | 150 | 6" | 100 | 4" | 570115-EUV | 0.49 |
| CXOBP 60X200 | 60 | 2 3/8" | 200 | 8" | 100 | 4" | 570120-EUV | 0.78 |
| CXOBP 60X300 | 60 | 2 3/8" | 300 | 12" | 100 | 4" | 570130-EUV | 1.19 |
| CXOBP 100X200 | 100 | 4" | 200 | 8" | 115 | 4 3/8" | 570220-EUV | 1.37 |
| CXOBP 100X300 | 100 | 4" | 300 | 12" | 115 | 4 3/8" | 570230-EUV | 1.98 |
| CXOBP 100X400 | 100 | 4" | 400 | 16" | 115 | 4 3/8" | 570240-EUV | 2.55 |
| CXOBP 100X600 | 100 | 4" | 600 | 24" | 115 | 4 3/8" | 570260-EUV | 3.23 |



90° OUTSIDE ELBOW
COVER TCXOBP



| CCXOBP | B | | 7035 | |
|----------------|-----|------|-------------|-------|
| | mm | inch | PVCM1 UV | KG/UD |
| CCXOBP 60X100 | 100 | 4" | 570110-ECUV | 0.22 |
| CCXOBP 60X150 | 150 | 6" | 570115-ECUV | 0.30 |
| CCXOBP 60X200 | 200 | 8" | 570120-ECUV | 0.49 |
| CCXOBP 60X300 | 300 | 12" | 570130-ECUV | 0.65 |
| CCXOBP 100X200 | 200 | 16" | 570220-ECUV | 0.75 |
| CCXOBP 100X300 | 300 | 12" | 570230-ECUV | 0.82 |
| CCXOBP 100X400 | 400 | 16" | 570240-ECUV | 1.14 |
| CCXOBP 100X600 | 600 | 24" | 570260-ECUV | 1.39 |



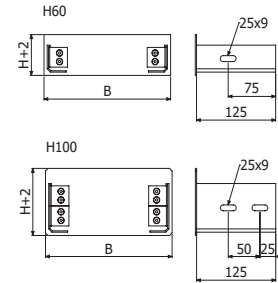
BLIND END
TFOBP PVC

22,5

150



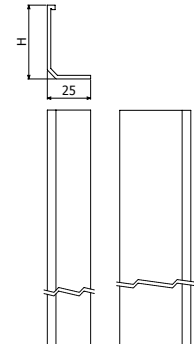
| TFOBP | H | | B | | 7035 | |
|---------------|-----|--------|-----|------|------------|-------|
| | mm | inch | mm | inch | PVCM1 UV | KG/UD |
| TFOBP 60X100 | 60 | 2 3/8" | 100 | 4" | B-560110UV | 0.09 |
| TFOBP 60X150 | 60 | 2 3/8" | 150 | 6" | B-560115UV | 0.13 |
| TFOBP 60X200 | 60 | 2 3/8" | 200 | 8" | B-560120UV | 0.15 |
| TFOBP 60X300 | 60 | 2 3/8" | 300 | 12" | B-560130UV | 0.21 |
| TFOBP 100X200 | 100 | 4" | 200 | 8" | B-560220UV | 0.24 |
| TFOBP 100X300 | 100 | 4" | 300 | 12" | B-560230UV | 0.31 |
| TFOBP 100X400 | 100 | 4" | 400 | 16" | B-560240UV | 0.40 |
| TFOBP 100X600 | 100 | 4" | 600 | 24" | B-560260UV | 0.55 |



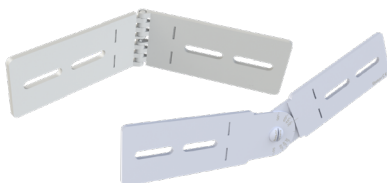
DIVIDER PROFILE
PSOBP



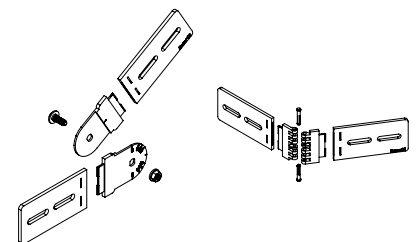
| CSOBP | H | | 7035 | |
|-----------|-----|--------|----------|------|
| | mm | inch | PVCM1 UV | KG/M |
| CSOBP 60 | 60 | 2 3/8" | 502050UV | 0.09 |
| CSOBP 100 | 100 | 4" | 502100UV | 0.13 |



KIT ECOBP-AB



| KIT ECOBP-AB | H | | 7035 | |
|--------------|-----|--------|----------|-------|
| | mm | inch | PVCM1 UV | KG/UD |
| ECOBP-AB 60 | 60 | 2 3/8" | 590260UV | 0.1 |
| ECOBP-AB 100 | 100 | 4" | 590096UV | 0.2 |

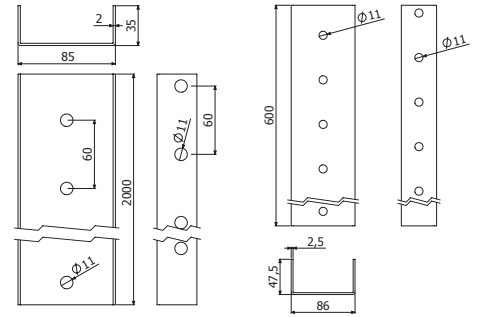


PROFILE OBP-EDF / OBP-EDFR



| OBP-EDF | 7035 | |
|--------------|------------------|-------|
| | Z275 RAL 7035 | KG/UD |
| OBP-EDF 2M | 564340-2000 | 2.29 |
| OBP-EDFR 600 | 564340-600UV | 2.05 |

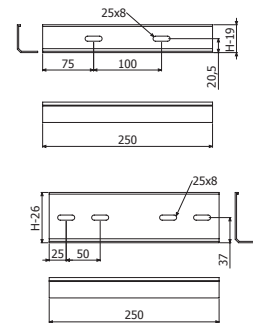
| OBP-EDFR | 7035 | |
|-------------|----------|-------|
| | PVCM1 UV | KG/UD |
| BOUCHON EDF | 564000 | 0.25 |



CONNECTOR EOBP



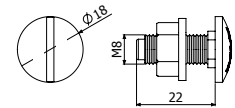
| EOBP | H | | 7035 | |
|----------|-----|--------|----------|-------|
| | mm | inch | PVCM1 UV | KG/UD |
| EOBP 60 | 60 | 2 3/8" | 560060UV | 0.05 |
| EOBP 100 | 100 | 4" | 510010UV | 0.09 |



TRCC BOLT BOBP



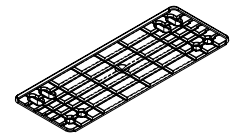
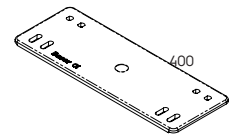
| BOBP | 7035 | |
|----------|----------|-------|
| | PVCM1 UV | KG/UD |
| BOBP-100 | 550820UV | 0.40 |



CONNECTOR JUOBP-C



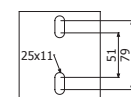
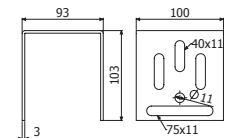
| JUOBP-C | B | | 7035 | |
|---------|-----|------|----------|-------|
| | mm | inch | PVCM1 UV | KG/UD |
| JUOBP-C | 400 | - | 561300UV | 0.30 |



GUSSET KSHGR



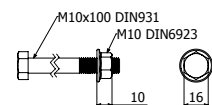
| KSHGR | 7035 | |
|-------|------------------|-------|
| | Z275 RAL 7035 | KG/UD |
| KSHGR | 564360UV | 0.61 |



SET CT2



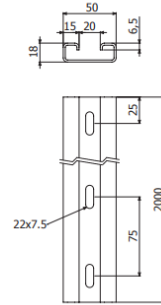
| CT2 | 7035 | |
|-------------|--------|-------|
| | I304L | KG/UD |
| CT2 M10X100 | 431100 | 0.11 |



RA50



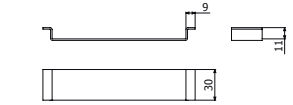
| RA50 | 7035 | |
|------|----------|------|
| | PVCMI UV | KG/M |
| RA50 | 512162UV | 0.33 |



FLANGE BIKIO-OBP*

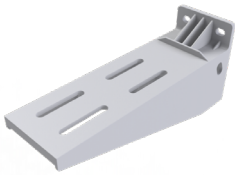


| BIKIO-OBP | e mm | Mod HxB | 7035 | |
|----------------------|---------|------------|--------|-------|
| | | | i304 | KG/UD |
| BIKIO-OBP 60X100 | 1.5 | 60x100 | 400100 | 0.03 |
| BIKIO-OBP 60X150 | 1.5 | 60x150 | 400150 | 0.05 |
| BIKIO-OBP 60/100X200 | 1.5 | 60/100x200 | 400200 | 0.07 |
| BIKIO-OBP 60/100X300 | 1.5 | 60/100x300 | 400300 | 0.09 |
| BIKIO-OBP 100X400 | 2 | 100x400 | 400400 | 0.20 |
| BIKIO-OBP 100X600 | 2 | 100x600 | 400600 | 0.49 |

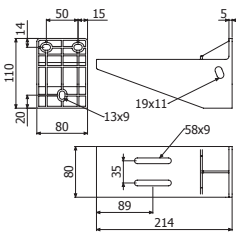
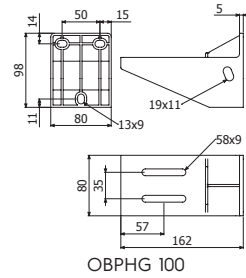


* Pour une résistance IK10

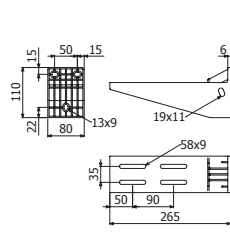
BRACKETS OBPHG



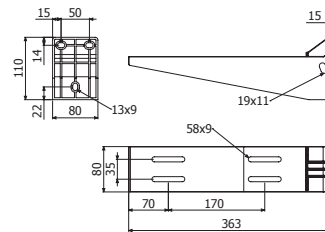
| OBPHG | L | | 7035 | |
|-----------|-----|------|----------|-------|
| | mm | inch | PVCMI UV | KG/UD |
| OBPHG 100 | 100 | 4" | 553100UV | 0.19 |
| OBPHG 150 | 150 | 6" | 553150UV | 0.27 |
| OBPHG 200 | 200 | 8" | 553200UV | 0.34 |
| OBPHG 300 | 300 | 12" | 553300UV | 0.54 |
| OBPHG 400 | 400 | 16" | 553400UV | 0.95 |
| OBPHG 600 | 600 | 24" | 553600UV | 1.10 |



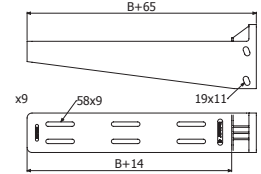
OBPHG 150



OBPHG 200



OBPHG 300

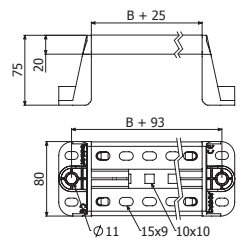


OBPHG 400/600

SUPPORTS OBPVG



| OBPVG | B | | 7035 | |
|-----------|-----|------|----------|-------|
| | mm | inch | PVCMIUV | KG/UD |
| OBPVG 100 | 100 | 4" | 552100UV | 0.23 |
| OBPVG 150 | 150 | 6" | 552150UV | 0.26 |
| OBPVG 200 | 200 | 8" | 552200UV | 0.28 |
| OBPVG 300 | 300 | 12" | 552300UV | 0.33 |
| OBPVG 400 | 400 | 16" | 552400UV | 0.38 |
| OBPVG 600 | 600 | 24" | 552600UV | 0.48 |





**CABLE TRAY
ENGINEERING**



OB Profils

1 AVENUE DE MALAGUET
28360 PRUNAY-LE-GILLON
FRANCE
+33 (0)2 37 300 301

INFO@OB-PROFILS.FR
WWW.OB-PROFILS.COM