

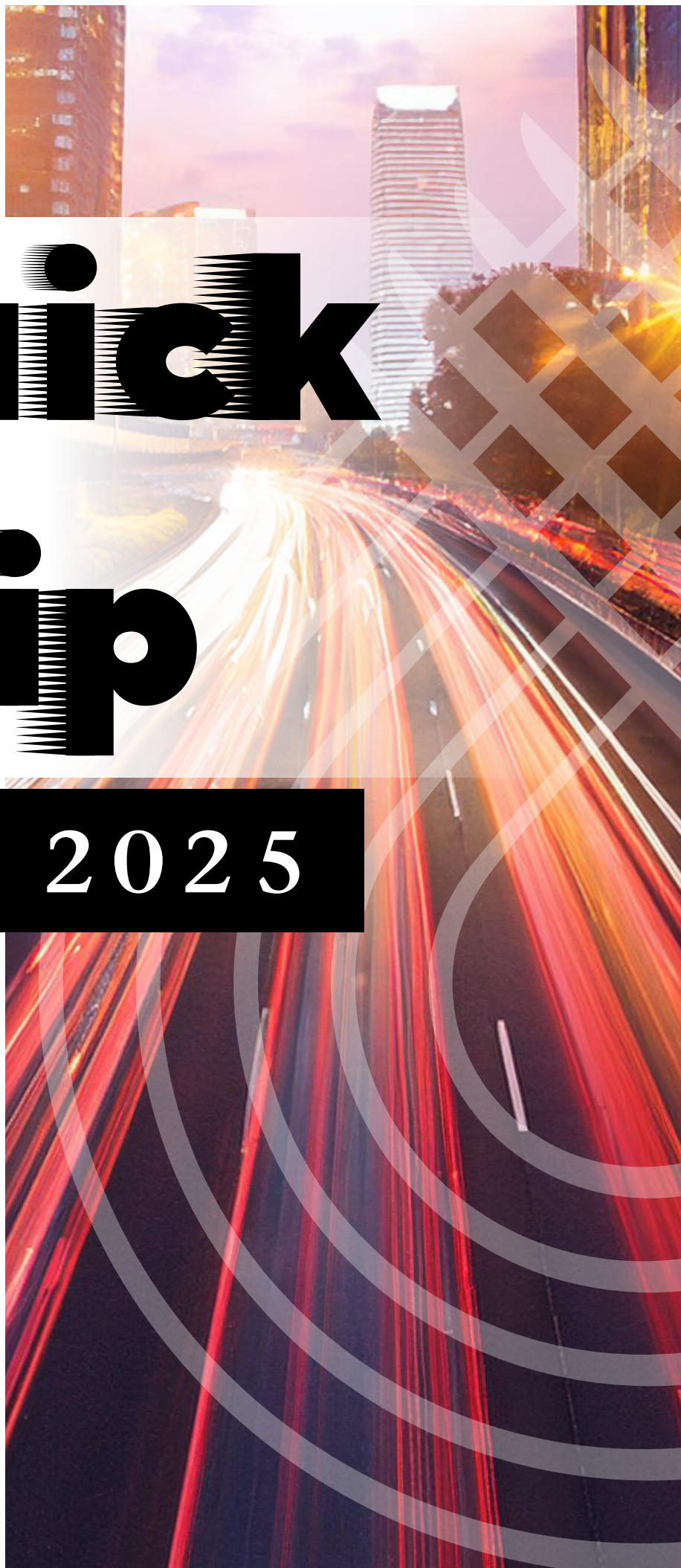
Carpets Inter®

Quick Ship

Modular
Carpet Tile

2025

Updated May 2025



NET ZERO IN 2050

At Carpets Inter, our mission is to achieve net-zero emissions by 2050. We recognize the urgent need to address climate change and take responsibility for our environmental impact. With a clear vision for a sustainable future, we are committed to implementing innovative strategies and technologies to reduce our carbon footprint.

By aligning our operations with the principles of sustainability and embracing a circular economy approach, we are determined to make a significant contribution towards a cleaner, greener, and more sustainable planet.



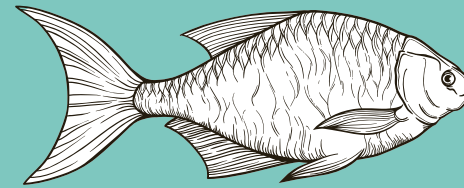
8 MILLION
METRIC TONS OF
PLASTIC
ENTERS THE OCEAN
FROM THE LAND
EACH YEAR



EcoSoft® marks a new era in the development of high-performance and environmentally friendly carpet tile cushion backing.

Natural spring water may be good for your health, but the bottles themselves threaten our environment by swallowing landfill space and increasing air-pollution from incineration. Uncontrollable volumes of plastic waste continue to flow into our oceans every second! EcoSoft®, our established high performance carpet cushion backing, is made from 80% post-consumer material reengineered from discarded drinking water bottles plus 5% post-industrial recycled PET. So you can breathe and walk with ease.

If things continue as is... by 2050
there will be more
PLASTIC
than



in the
OCEAN

We're thrilled to announce that our
**"1 BILLION
RECYCLED
WATER BOTTLES"**
campaign has reached its goal!



This is a major milestone in our journey towards a more sustainable future, and we couldn't have done it without you.

THE SOLUTION
TO CLIMATE CHANGE
IS JUST
BENEATH THE SURFACE

CARBON CAPTURE

Environmentally Recyclable Materials

Soft to the step

100%



Soft on the environment



At Carpets Inter, we create modular carpet that does more than just make the world more beautiful; it makes it more livable. We do this with products that meet stringent indoor air-quality needs, are safe to manufacture and utilize and incorporate recycled materials wherever feasible including our unique EcoSoft® backing fabricated from millions of recycled plastic bottles. Our commitment to ecological sustainability extends beyond our product. We practice it in everything we do – from manufacturing facilities that maintain the highest environmental standards, to reducing our carbon footprint in every facet of our global business.

ARCHITECTURE
& DESIGN

Sustainability
Awards

Winner

Waste Elimination
Carpets Inter EcoSoft® carpet tiles

Over 150 projects, people and products were nominated for Australia's 'Sustainability Awards' organized by Architecture & Design and In Design Media Asia Pacific Magazine. All nominees exhibited a high caliber of design that choosing the finalists was an arduous task even for the highly experienced jury. After careful and deliberate consideration, Carpets Inter's EcoSoft back modular Carpet tile manufactured from recycled Plastic Bottles was selected as the unanimous winner of the 'Waste Elimination' category. The award recognizes Carpet Inter continued efforts to provide leading Architects and Interior Design practices with fit for purpose sustainable product solutions, suitable for WELL Buildings in many appealing styles.



Declare.





Meeting
room

Nylon Quick Ship

Every design is meticulously crafted to capture the unique essence of every space, aligning seamlessly with your distinct vision. Our commitment on well-designed, sustainable solutions ensures your space is not only aesthetically pleasing, but also built for lasting impact on daily life.

GROUNDWORK



Elevation
GW02



Stratum
GW04



Pinnacle
GW01

Altitude
GW03

GROUNDWORK

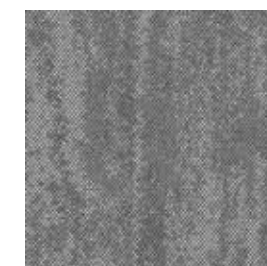
Laying the foundations and preparing the groundwork serve as the fundamental cornerstones for the successful outcome of any project. Adding the strength of character to build a solid outcome is key to success. Breaking Ground – Groundwork introduces a timeless, elegant organic structural base on which to build and carve out a successful future.



Pinnacle
GW01



Elevation
GW02



Altitude
GW03



Stratum
GW04



Level
GW05



Bedrock
GW06



Blueprint
GW07



Intuit
AKI06



Empower
AKI08

Insight

With clarity, confidence, and a commitment to innovative design, we proudly introduce the **Aspekt** Collection—a showcase of imaginative perspectives and forward thinking creativity. **Insight** delves deep, offering a contemplative view that encourages introspection and thoughtful design choices.



Perceive
AKI01



Enlight
AKI02



Vision
AKI03



Aware
AKI04



Inspire
AKI05



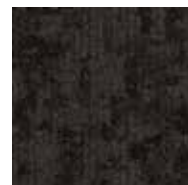
Intuit
AKI06



Resonance
AKI07



Empower
AKI08



Drive
AKI09



Perceive
AKI01



Vue

Vue is the embodiment of the bold, visionary leader—a successor ready to leave a lasting impact. The collection’s dynamic color palette and modern designs are perfect for those who lead with confidence and are unafraid to challenge the status quo. **Vue** transforms spaces into powerful statements of intent, where every shade and texture speaks to the energy and drive of a true executive.



Ambition
AKV01



Imagine
AKV02



Clarity
AKV03



Energy
AKV04



Elevate
AKV05



Define
AKV06



ASPEKT





PC103



PC106



PC101



PC102



PC103



PC104



PC105



PC106



PC105

Piccadilly

Step into the heart of London with our Bright Lights, Big City (BLBC) collection, where iconic landmarks and the dynamic energy of the city come to life underfoot.





WATERLOO

Step into the heart of London with our Bright Lights, Big City (BLBC) collection, where iconic landmarks and the dynamic energy of the city come to life underfoot.



WL201



WL202



WL203



WL204



WL205



WL206



WL202, WL204



WL201



WL203



WL204

Architexture Connect

Architexture: Connect is an evolution of a timeless classic carpet, designed to compliment the ever changing needs of our interior spaces as we continue on our collective journey. The spaces we work, rest, play, learn and heal are all evolving and connecting in ways wenever imagined before.



Istanbul
AC06
Vefa
AC61



Paris
AC07
Soma
AC71



Baku
AC01



Malabar
AC02



Bucharest
AC03



Shanghai
AC04



Bangkok
AC05



Istanbul
AC06



Paris
AC07



Jing'An
AC41



Silom
AC51



Vefa
AC61



Soma
AC71

MESA ALTO

Mesa Alto

Isolated, flat-topped elevation, ridge or hill, surrounded on all sides by steep escarpments that stand distinctly above a surrounding plain. This solution dyed modular carpet tile offers high performance at great value. The understated organic texture provides an elegant and functional floorcovering solution.



Redonda
MS21



Raton
MS22



Masada
MS23



Conner
MS24



Santo
MS25



Pahute
MS26



Atila
MS27



Ingleborough
MS28



Amadiya
MS29



CARBON IN 05
FRAGRANCE IN 09
AROMA IN 11
BREEZE IN 14



AIR IN 13



MIST IN 15

Inhale

CARPETS INTER BRINGS YOU BREATHE COLLECTION, A MODULAR CARPET TILE COLLECTION IN TWO DESIGNS **INHALE** AND **EXHALE** THAT WORK TOGETHER AS INSTINCTIVELY AS BREATHING...

INHALE

VAPOUR IN 01	OXYGEN IN 02	PARTICLE IN 03	OZONE IN 04	CARBON IN 05
ATMOSPHERE IN 06	INCENSE IN 07	SCENT IN 08	FRAGRANCE IN 09	FRESH IN 10
AROMA IN 11	PERFUME IN 12	AIR IN 13	BREEZE IN 14	MIST IN 15

BREATHE



archiproducts
DESIGN AWARDS
2022



NADI EX13

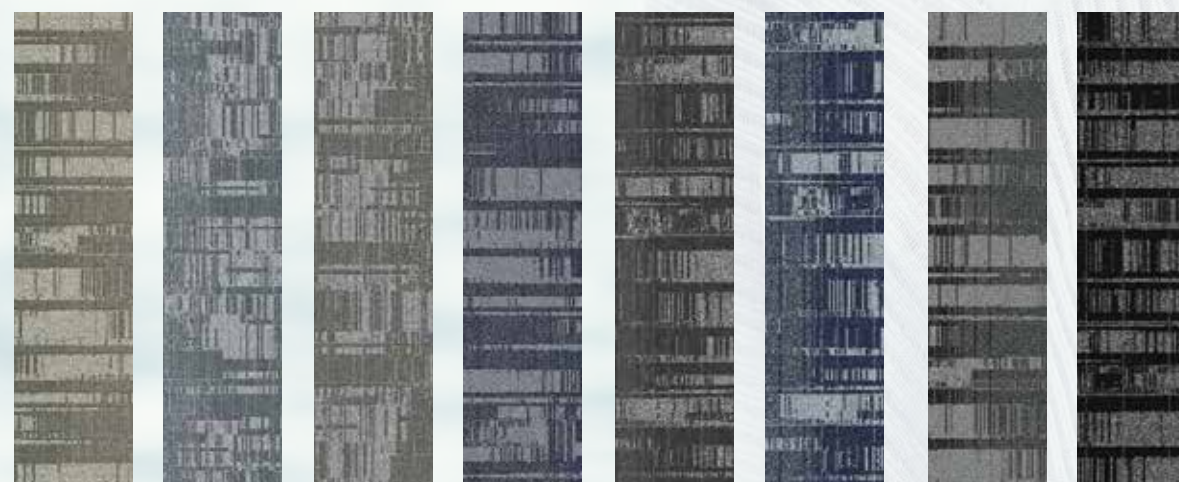


HATHA EX03

Exhale

CARPETS INTER BRINGS YOU BREATHE COLLECTION, A MODULAR CARPET TILE COLLECTION IN TWO DESIGNS **INHALE** AND **EXHALE** THAT WORK TOGETHER AS INSTINCTIVELY AS BREATHING...

EXHALE



ASANA EX01

UJJAYI EX02

HATHA EX03

PRANAYAMA
EX04

VINYASA
EX05

SITALI EX06

NADI EX13

SODHANA
EX14

BREATHE



Truss Blue
OS 234
Solway
FL 31

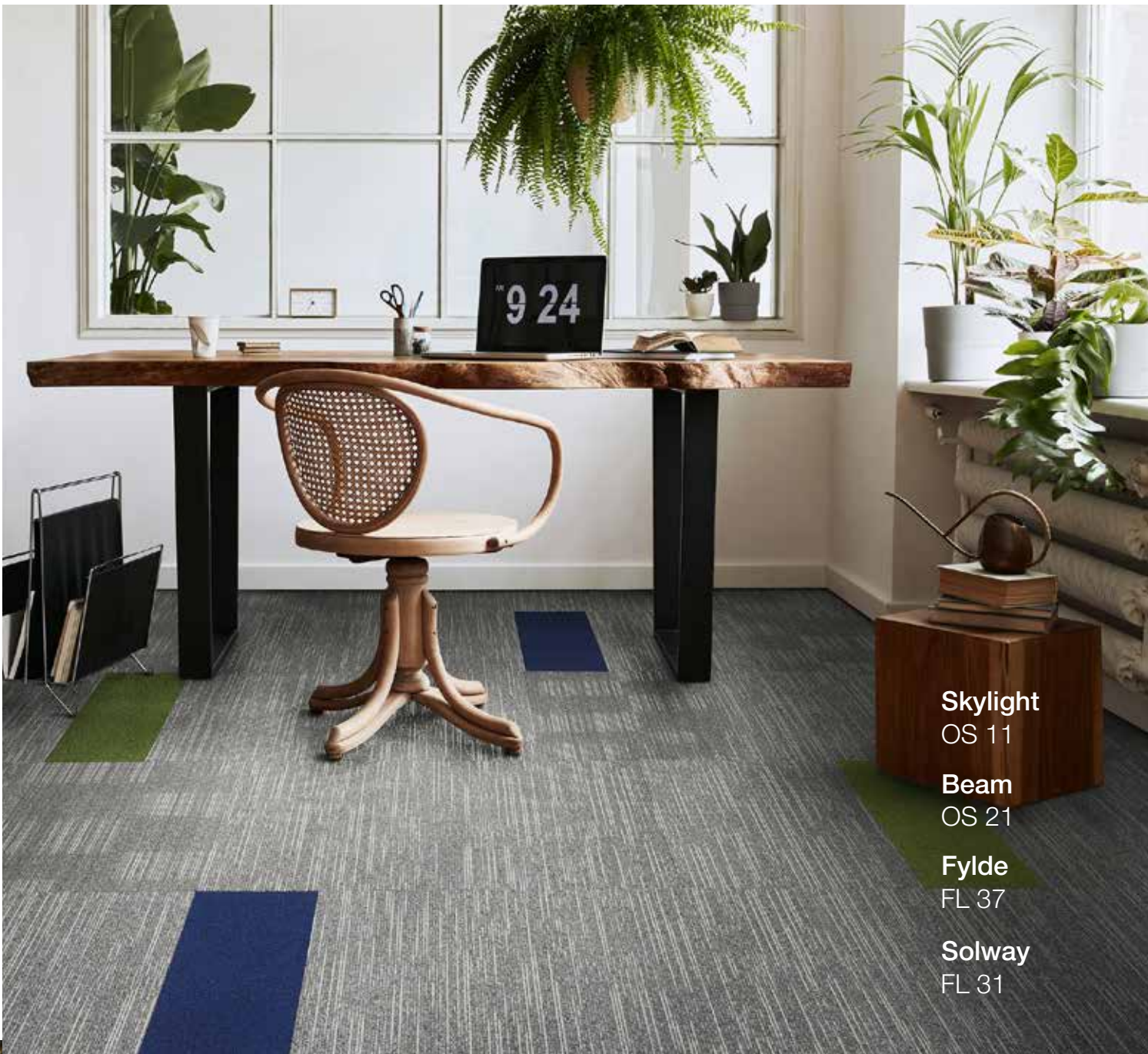


Truss Green
OS 232
Fylde
FL 37

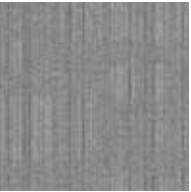


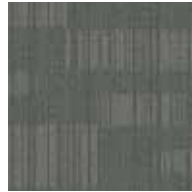
















Orsa

THE ORIGIN OF A STRONG BEGINNING...

Orsa embodies the essential elements of creating a foundation to build upon. Two timeless classic designs to compliment a building's strength and stability, and to create the perfect footing for a truly original workspace.



Skylight
OS 11
Beam
OS 21
Fylde
FL 37
Solway
FL 31

					
Beam OS 21	Skylight OS 11	Ramp OS 12	Ledge OS 22	Truss OS 23	Arch OS 13
					
Stair OS 14	Riser OS 24	Tread OS 25	Step OS 15	Rafter OS 16	Joist OS 26
					
TRUSS Red OS 231	TRUSS Green OS 232	TRUSS Yellow OS 233	TRUSS Blue OS 234		
					
Kedu FL 22	Fylde FL 37	Lantoto FL 11	Solway FL 31		



Cave
DV100
Calligraphy
DV102

TAKE A JOURNEY OF DISCOVERY
AND WRITE YOUR OWN STORY.



Mountain
DV200
Batik
DV201

Discover

Discover is a modular carpet tile collection inspired by the history and stories unravelled through the differences in culture and traditions around the world.



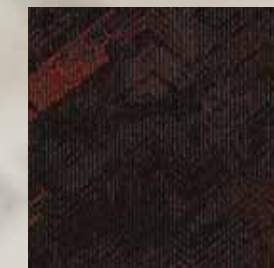
Cave
DV 100



Calligraphy
DV 102



Tattoo
DV 103



Henna
DV 104



Mountain
DV 200



Batik
DV 201



Mosaic
DV 202



Engrave
DV 204



Mountain
DV200
Mosaic
DV202



Recover
RS 01

Revive
RS 02

Renew
RS 03

Complimentary components
working together



Reuso

Reuso is a modular carpet tile designed to utilise every square inch produced to reduce waste. With two options of environmentally respectful backing types, Reuso offers a package both inspired by, and the genuine reuse of everyday materials into new products.



Recover
RS 01

Salvage
RS 04



Recover
RS 01



Revive
RS 02



Renew
RS 03



Salvage
RS 04



Overhaul
RS 05



Transform
RS 06



Aquire
RS 07



Reveal
RS 08

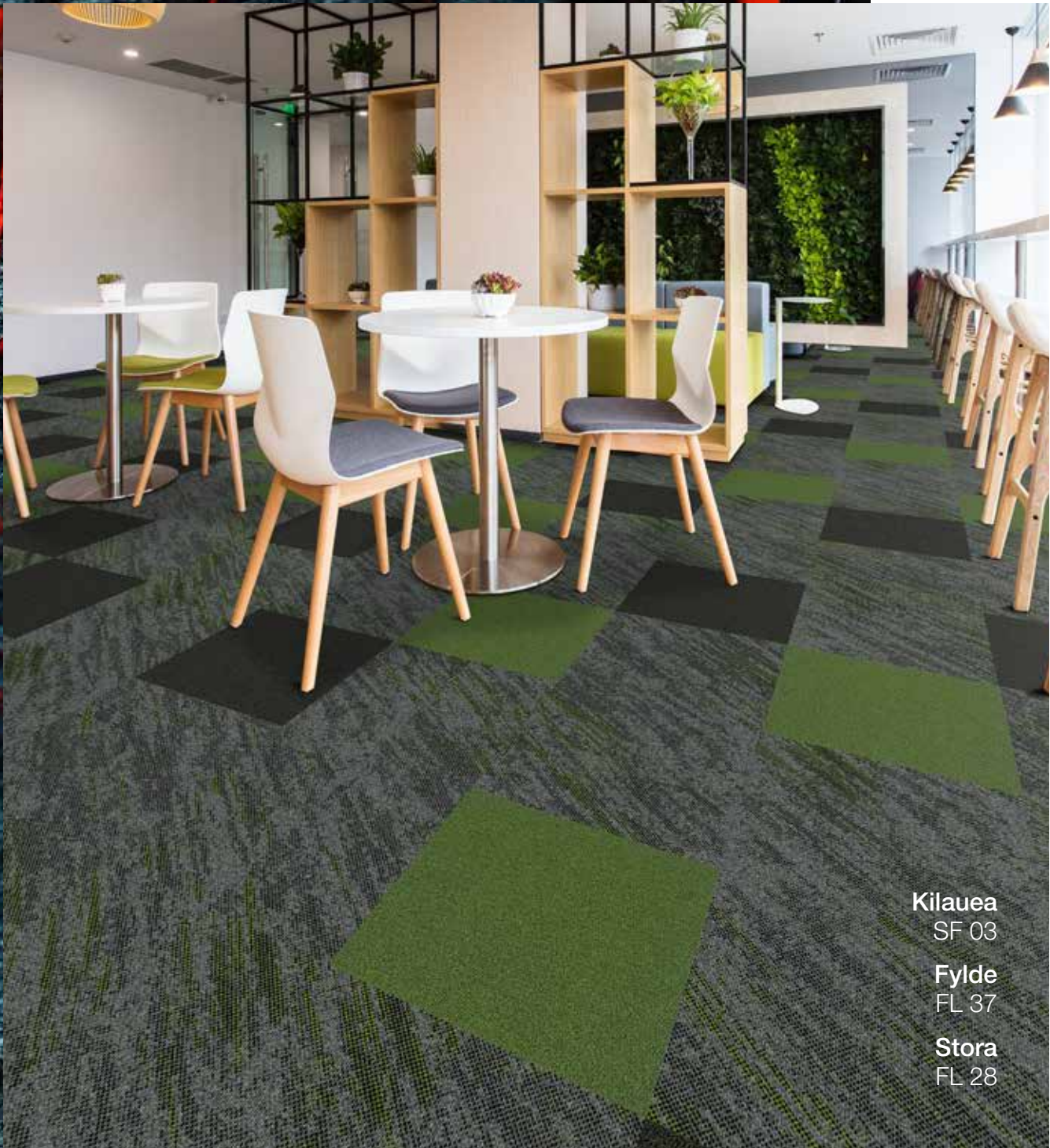


Upgrade
RS 09

REUSO



Erebus
SF05



Kilauea
SF 03
Fylde
FL 37
Stora
FL 28

Beneath the Surface

The collection provides a dynamic sense of flow and movement in very natural colour tones with the occasional emergence of hot lava, gem like formations within the cracks or the rebirth of nature as grass and moss begins to grow on the devastated landscape.



Vesuvius
SF 09



Fuji
SF08



Merapi
SF01



Krakatoa
SF02



Kilauea
SF03



Obsidian
SF04



Erebus
SF05



Basalt
SF06



Batur
SF07



Fuji
SF08



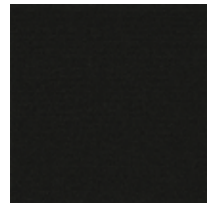
Vesuvius
SF09

Flatlands

Named after the vast plains that cover much of the Earth, Flatlands monotone texture is ideal for creating an overall appearance on the floor. Flatlands provides a high performing 'fit for purpose' backdrop to functional spaces and can be used independently or as a matching coordinate.



Yilan
FL27



Harrat
FL23



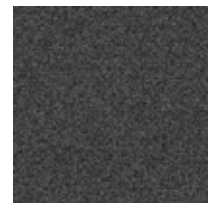
Stora
FL28



Nurra
FL29



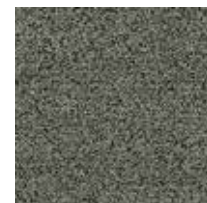
Messara
FL30



Omo
FL04



Taza
FL08



Manitoto
FL25



Rieti
FL24



Banco
FL14



Gola
FL01



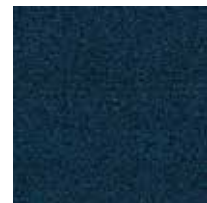
Arusha
FL03



Llanos
FL35



Solway
FL31



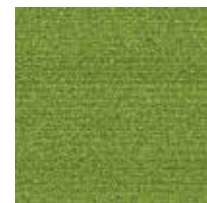
Mugan
FL34



Limagne
FL33



Sapo
FL10



Fylde
FL37



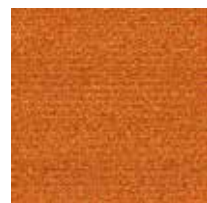
Taieri
FL32



Nariva
FL36



Depsang
FL39



Shiraki
FL38



Lantoto
FL11



Cheshire
FL26



Karoo
FL18



Kedu
FL22

Visibility of Carpet Tile Seams in Solid or Near-Solid Tiles.
Please refer Installation Method & Disclaimer.



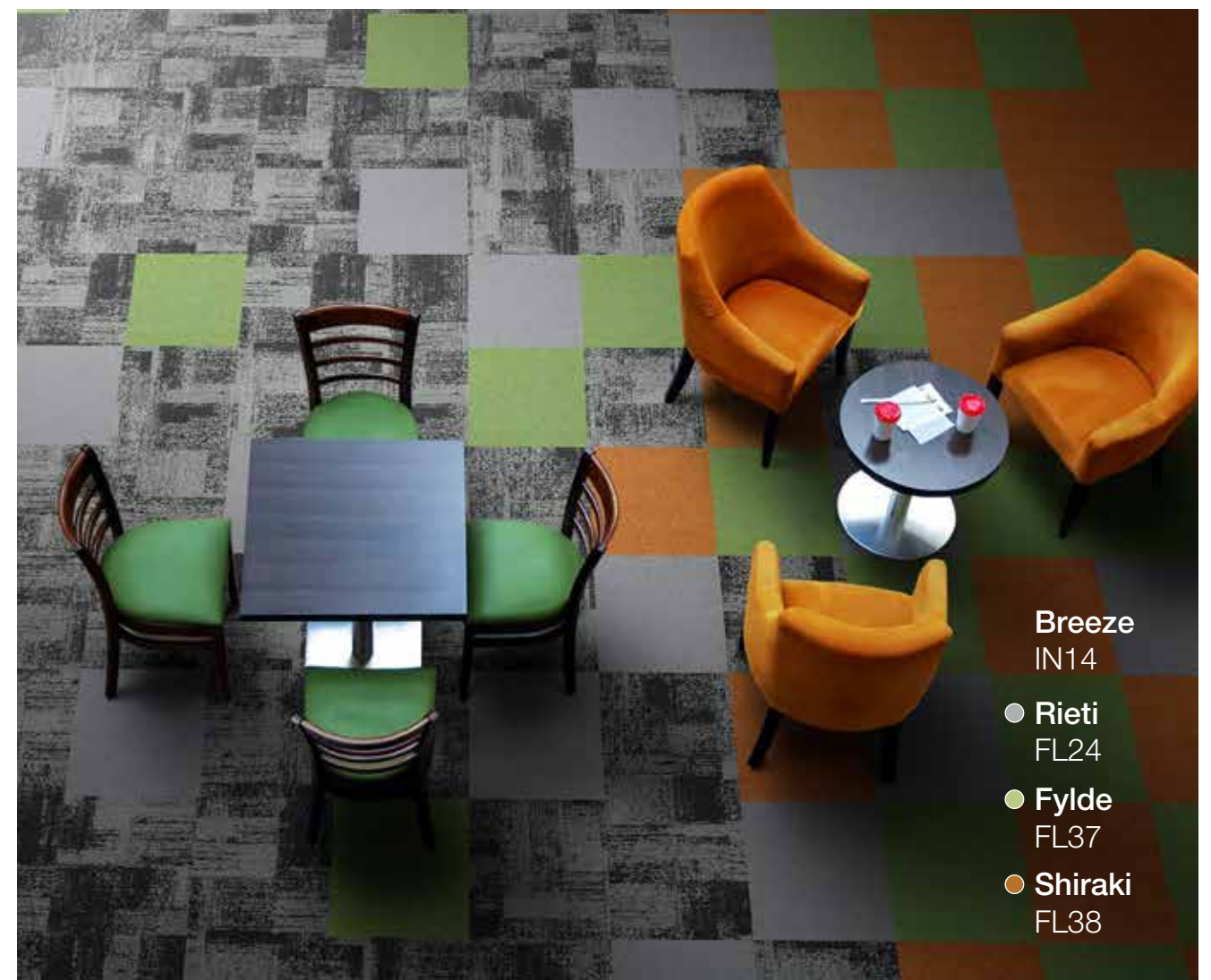
Masada
MS23

Pahute
MS26

● **Sapo**
FL10

● **Limagne**
FL33

● **Fylde**
FL37



Breeze
IN14

● **Rieti**
FL24

● **Fylde**
FL37

● **Shiraki**
FL38

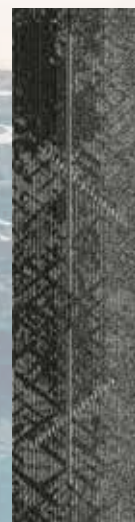
FLATLANDS

PEAKS

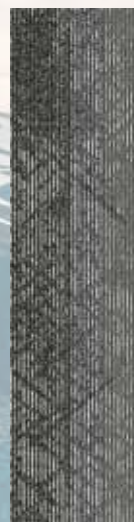
Headlands is a modular carpet tile collection designed to invigorate the simple elegance of Flatlands to produce a beautiful partnership which invites a sense of play and endless possibilities.



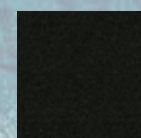
Rocky
HL 01



Ridge
HL02



Outcrop
HL03



Yilan
FL27



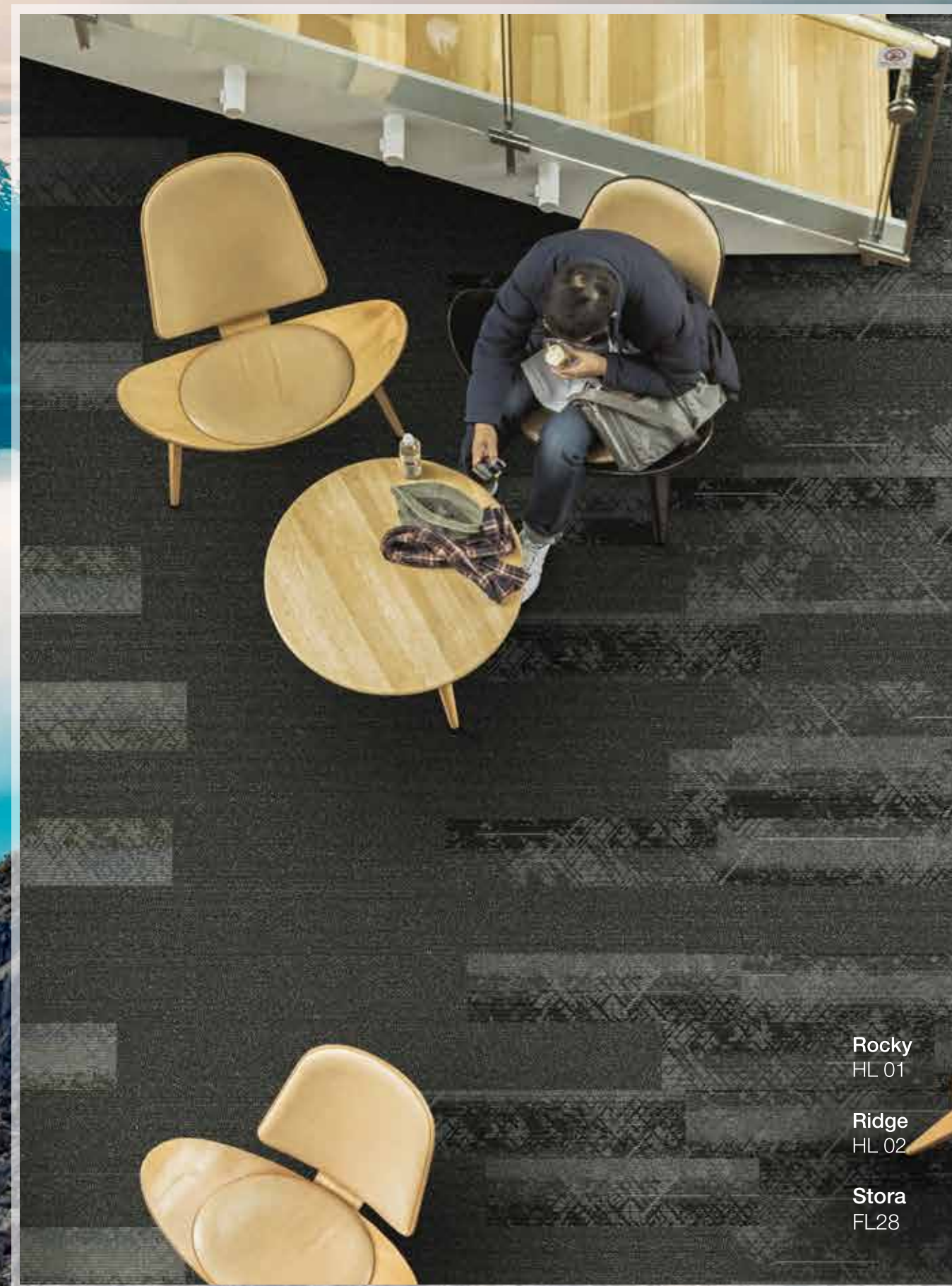
Rieti
FL24



Stora
FL28



Where colors combine as peaks
melt into skyline



HEADLANDS



Atoll
HL 05

Nariva
FL36

Rocky shorelines
reflect colors of lands
fusion with water

EDGE

Headlands is a modular carpet tile collection designed to invigorate the simple elegance of Flatlands to produce a beautiful partnership which invites a sense of play and endless possibilities.



Gulf
HL 07

Gola
FL 01

Atoll
HL05



Fjord
HL06



Gulf
HL07



Solway
FL31



Gola
FL01



Nariva
FL36



Gulf
HL07

Fjord
HL 06

Solway
FL31

Nariva
FL36

A spectrum of color
viewed along
coastal pathways

PATHWAYS

Headlands is a modular carpet tile collection designed to invigorate the simple elegance of Flatlands to produce a beautiful partnership which invites a sense of play and endless possibilities.

Dune
HL09



Sandbar
HL10



Lantoto
FL11



Cheshire
FL26



Dune
HL09



Sandbar
HL 10

Over The Ocean

Breaking Waves

Over the Ocean was inspired by the movement of currents and reflected light on the surface of the water as seen from the air.



Ice Floe
OC 01



Grey Seal
OC 05



Black Pearl
OC 06



Gulf Stream
OC 02



Blue Whale
OC 03



Shoreline
OC 04



Golden Reef
OC 11



Seagrass
OC 10



Red Coral
OC 12



Over the Ocean
OC03 Blue Whale

Flatlands
FL36 Nariva

This installation featuring Over the Ocean marries the organic pattern with the geometry of the planks in multiple colors to create a dynamic graphic floor suitable for large open areas.



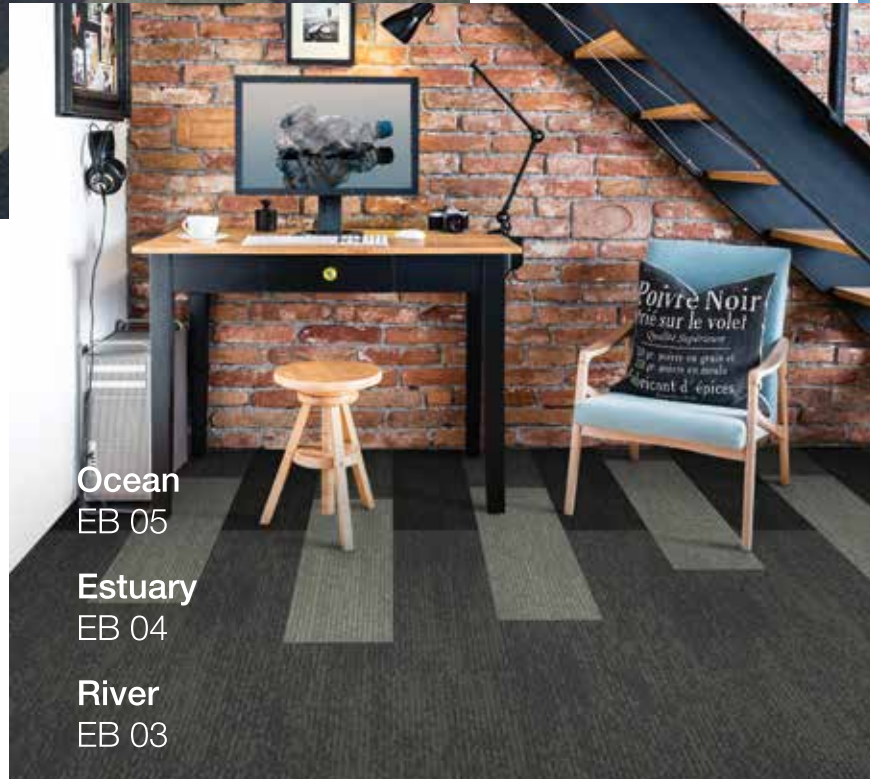
Over the Ocean
OC01 Ice Floe
OC05 Grey Seal

Flatlands
FL27 Yilan



Creek
EB 02

Spring
EB 01



Ocean
EB 05

Estuary
EB 04

River
EB 03

Ebb

Upstream Collection

Upstream has been engineered to highlight how for more than a decade, Carpets Inter has diverted plastic waste from becoming part of this essential movement of water around our planet.



Spring
EB 01



Creek
EB 02



River
EB 03



Estuary
EB 04



Ocean
EB 05

Declare.



EcoSoft®
Environmentally Friendly Cushion Backing
Recycled and Recyclable Materials

NOISE
REDUCTION



Spring
EB 01

River
EB 03

River Sunset
EB 34

River Sand
EB 33

River Emerald
EB 32

River Azure
EB 31



Estuary Sand
EB 43

Lantoto
FL 11



Estuary Sunset
EB 44

Kedu
FL 22



Ebb-Wash

Upstream Collection

EBB-Wash adds a splash of Color to the Upstream Collection and is created to highlight how Carpets Inter is succeeding in preventing plastic waste from polluting our oceans and rejuvenating the natural habitats of our marine life

EBB-Wash is a dynamic organic pattern that will accentuate any interior floor space.



River Azure
EB 31



River Emerald
EB 32



River Sand
EB 33



River Sunset
EB 34



Estuary Azure
EB 41



Estuary Emerald
EB 42



Estuary Sand
EB 43



Estuary Sunset
EB 44

EcoSoft®
Environmentally Friendly Cushion Backing
Recycled and Recyclable Materials

NOISE
REDUCTION

Declare.





VILA RICA



Tavira
VR 05

Fatima
VR 06



Lagos
VR 03

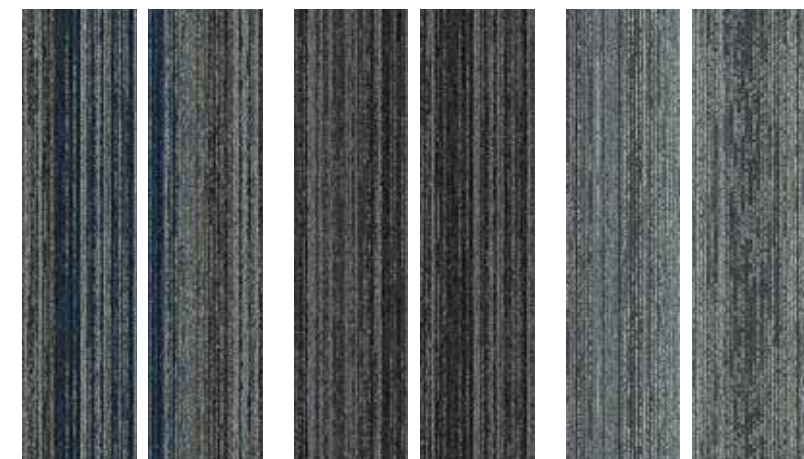


Serra
VR 12

Pavia
VR 13

Vila Rica

Vila Rica is inspired by the vernacular architecture of historic Portugal, specifically from the vilas or small towns. The exteriors of the typical buildings combine mostly neutral walls enlivened with accent colors. The designer uses variegated neutrals interspersed with accents of color in an organic linear pattern to create a simple texture that renders a quiet sophisticated look on the floor. The colors are designed to be used in combination or individually to create inspired floors and complement inspiring interiors.



Mora
VR 02

Lagos
VR 03

Tavira
VR 05



Fatima
VR 06

Serra
VR 12

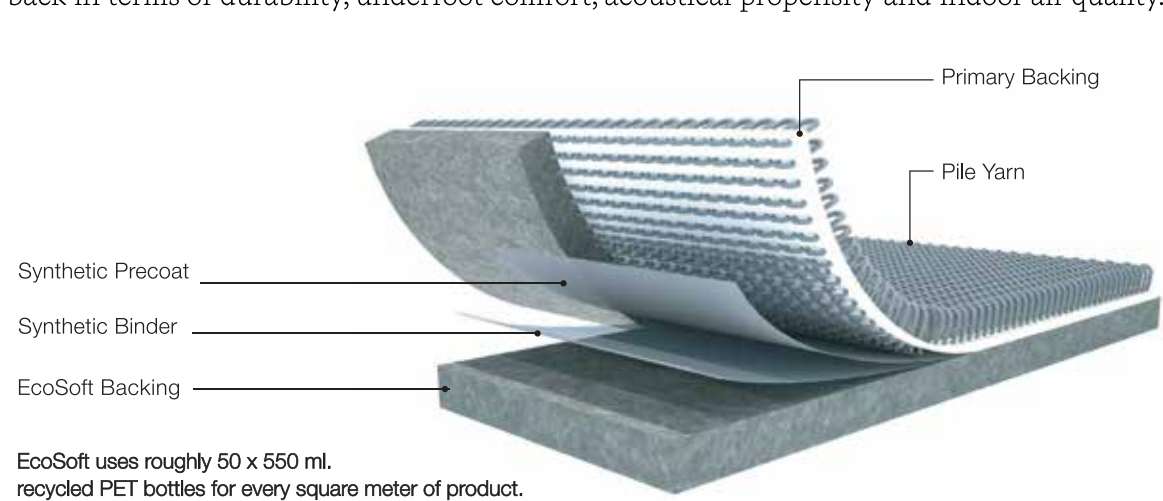
Pavia
VR 13

We're thrilled to announce that our
"1 BILLION RECYCLED WATER BOTTLES"
campaign has reached its goal!

EcoSoft®

Sustainable Performance and Value

EcoSoft® is made from 80% post-consumer material reengineered from millions of discarded drinking water bottles, plus 5 to 10% post-industrial recycled PET. This environmentally friendly backing not only meets all the stringent performance criteria required for modular carpet, but consistently out performs conventional PVC and bitumen hard back, as well as urethane cushion back in terms of durability, underfoot comfort, acoustical propensity and indoor air quality.



EcoSoft uses roughly 50 x 550 ml. recycled PET bottles for every square meter of product.



EcoSoft® Outstanding Features

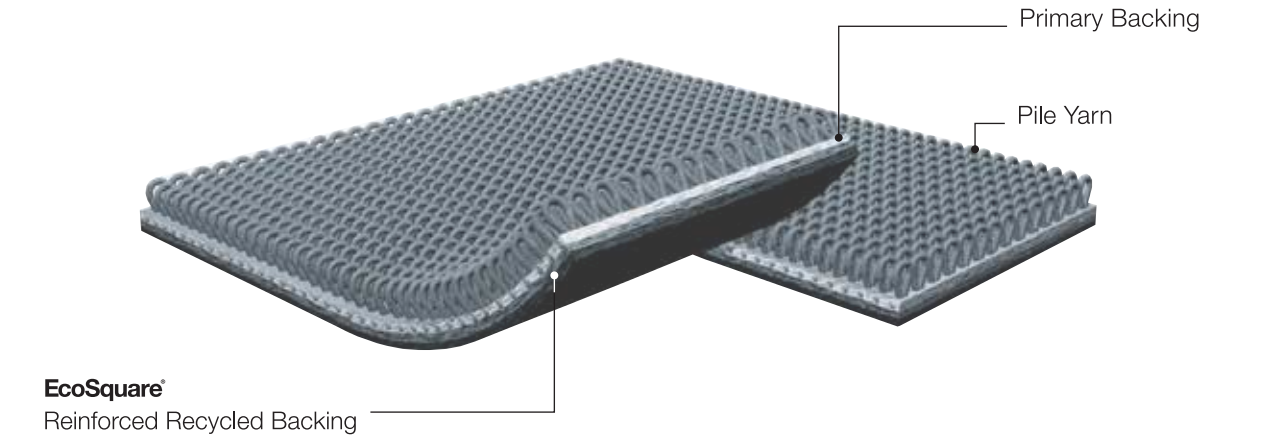
- > 85% recycled content backing
- > 100% recyclable
- > No PVC, Bitumen or Fiberglass content
- > Suitable for installation onto wet slab up to 99% RH
- > Superior Acoustical Propensity - outperforms hardback by 150% to 175% per Green Star IEQ10 internal noise level requirements
- > Excellent Dimensional Stability BS EN 986 less than 0.15%
- > Cushioning reduces wear and tear, fiber crush and user fatigue
- > EcoSoft® backed modular carpet product contributes up to 7 LEED points

In view of the superior properties outlined above, modular carpet with EcoSoft® backing is the ideal choice for Education facilities.

EcoSquare®

Sustainable Performance and Value

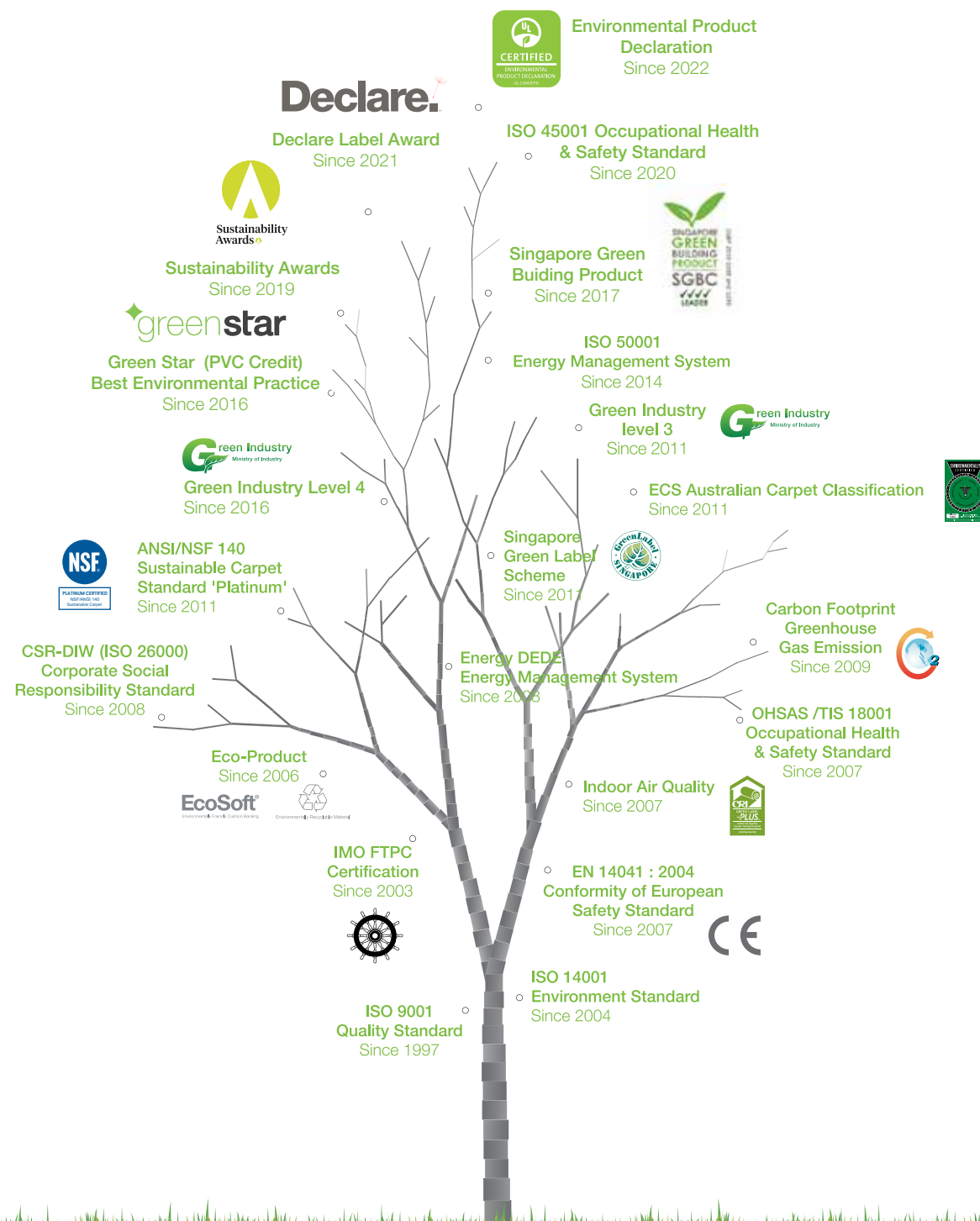
EcoSquare® is another step in Carpet Inter’s ongoing Sustainability and Reclamation program, repurposing waste material into a recycled high performance modular carpet backing.



EcoSquare® Outstanding Features

- > 63.5% recycled content backing
- > 100% recyclable
- > Meets Greenstar best practice guidelines
- > Free of toxic plasticisers and stabilisers
- > Excellent Dimensional Stability BS EN 986 less than 0.15%
- > EcoSquare® backed modular carpet product contributes up to 5 LEED points

Committed to the continuous growth of social responsibility and environmental practices.



Sustainable Minds

Sustainable Minds is dedicated to operationalizing environmental performance in mainstream product development and manufacturing in an understandable, empowering, and credible way. Carpets Inter carpet tiles are being listed on Sustainable Minds/WELL register now for application into WELL Certified Buildings.



Environmental Product Declaration

EPD (Environmental Product Declaration) is an independently verified and registered document that communicates transparent and comparable information about the life-cycle environmental impact of products.



Green Label Plus

Green Label Plus (GLP) is the flooring carpet standard for indoor air quality. It is an independent testing program that identifies carpet with very low emissions of VOCs (13 chemicals).

The certified product can deliver the point associated with IEQ credit 4.3 of LEED and IE 2.3 of TREES-NC (Thailand's Rating of Energy and Environmental Sustainability for New Construction and Major Renovation).



NSF 140

The first ANSI approved, multi-attribute sustainable carpet assessment standard which identifies that the certified carpets have reduced environment impact according to the award requirement.

This standard is the most comprehensive and rigorous benchmark in the U.S. flooring industry.

NSF 140 was designed to establish a system with varying levels of certification to define sustainable carpet. The sustainable carpet standard NSF 140 is recognised within the LEED scheme, the US equivalent to Green Star.



Environmental Certification Scheme (ECS)

The Code of Practice is an important element of the environmental certification of carpets registered with the Australian Carpet Classification Scheme (ACCS). This Code provides a guide to good environment management in all aspects of carpet manufacturing, and the subsequent carpet life cycle performance. The provisions of the Code include Raw Materials, Manufacturing, Environmental Risk Management, Land and Ground Water Management, and Records and Reporting.



Sustainability Awards

With Australia being a global leader in sustainable and environmental practices, Carpets Inter's EcoSoft® recently entered and beat over 35 entrants to WIN 1st prize in the 'Waste Elimination' category, an award voted by leading Australian architects and environmentalists.

The award recognizes Carpet Inter's continued efforts to provide Australia's leading Architects and Interior Design practices with fit for purpose sustainable product solutions, suitable for WELL Buildings in many appealing styles.



Green Industry

This guideline manual for entrepreneurs' green industry development is a part of green industry accreditation activity. It is a sample of guidelines for entrepreneurs who commit to environmentally-friendly business operations for sustainable development aimed at continuous improvement and social and environmental environment, both inside and outside the organization throughout the supply chain.



Declare Label

Declare is regarded as the toughest materials transparency standard in sustainable construction. The Declare program enables manufacturers to communicate their product ingredients in an effort to promote transparency and accountability.

Our Solution Dye Nylon EcoSoft® PETfelt Cushion modular carpet tile has received the highest award of 'LBC RED LISTFREE' under the International Living Future Institute (ILFI) Declare Label Award program.



Singapore Green Building Product

The Singapore Green Building Council forges public-private partnerships to foster innovative industry solutions across the entire building and construction value chain. Through its green building product and green building services labelling programmes, SGBC sets high standards for green building solutions both locally and regionally to help build more sustainable cities for better living.



Carbon Footprint

Carbon Footprint of Products (CFP) takes into account the quantity of GHG emissions from each production unit throughout the whole life cycle (cradle-to-grave) of a product. Carbon footprint thus calculates the carbon dioxide equivalent (CO₂e) of the GHG emissions releasing from the raw material acquisition, manufacture, use, waste management and final disposal including related transports in all stages.

However, carbon footprint value only considers the product's environmental impacts in term of climate change, but excludes other environmental impact categories, such as biodiversity, acidification and eutrophication.



Singapore Green Labelling Scheme

The Singapore Green Labelling Scheme (SGLS) was launched in May 1992 to endorse consumer products and services that have less undesirable effects on our environment. This is administered by the Singapore Environment Council.

The SGLS is applicable to most products except food, drinks and pharmaceuticals. Green Label products include items produced locally or internationally that have been evaluated through stringent standards.

ROYAL THAI Carpets Inter® RT *acoustic* RTSTUDIO



www.carpetsinter.com, info@carpetsinter.com © Carpets Inter 2024

Headquarters

2054 New Petchburi Road
Bangkok, Huaykwang, Bangkok 10310 Thailand
Tel +66 (0) 2314-5402, Fax +66 (0) 2318-3537

Showrooms

1/19 Moo 1, Manidol, Pandol,
Muang, Chiangmai 50000 Thailand
Tel +66 (053) 274-584-5
Fax +66 (053) 274-587

31/19 Rajyindee Road,
Hadyai, Songkla 90110 Thailand
Tel 074-209790-1
Fax 074-209792