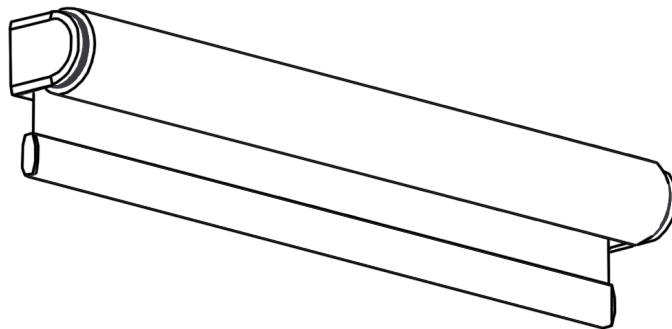


OPEN ROLL SHADE INSTALLATION GUIDE

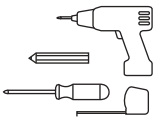
Thank you for your purchase! This will guide you through the Open Roll shade installation process. If you ever need any help throughout, reach out to us at (417) 553-0504.



Before installing the Open Roll roller shade, Please have measurements from your order handy. Your shade will come labeled with the room name and shade name on the outside of the box to help you correctly identify the shade.



REQUIRED TOOLS AND HARDWARE



SCREWS



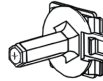
END CAPS



BRACKETS



IDLER PIN



SCREW COVER



FILL-UP RING



INSTALLATION

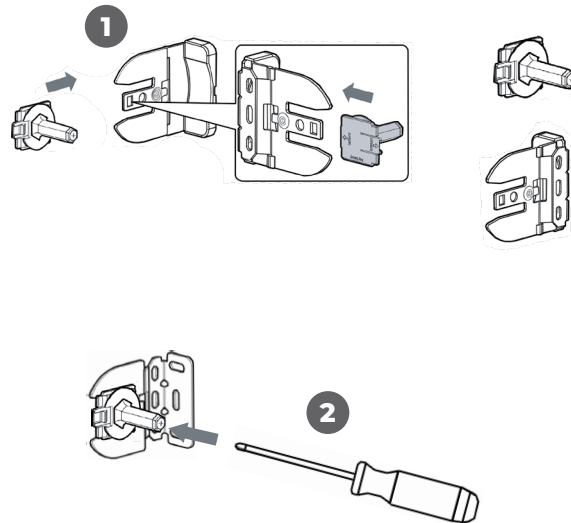
STEP 1

Determine the correct window for the shade to be installed and whether the shade was ordered to be inside or outside mounted. Please also consider the control side of the shade. You can reference the packaging of the shade or you can refer to your order on the PowerShades Portal for this information.

STEP 2

Before installation, its a good idea to preassemble the shade. Start by attaching the idler pin into the idler side bracket. The control side of the shade will not need an idler pin attached.

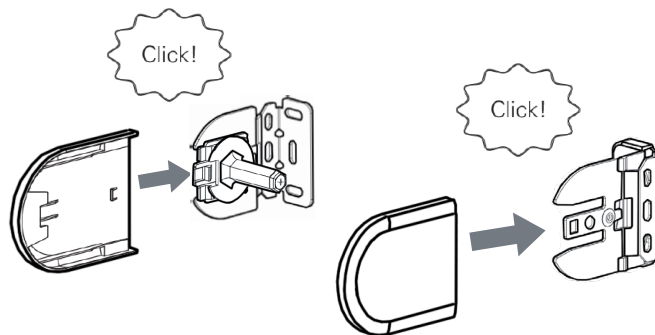
- 1 Slide the idler pin into the middle prong of the bracket.
- 2 Screw it in tightly to secure the pin.



For lighter-duty shades, such as manual and small motorized shades. The idler pin will only need to snap into the bracket and will not come with a screw-head.

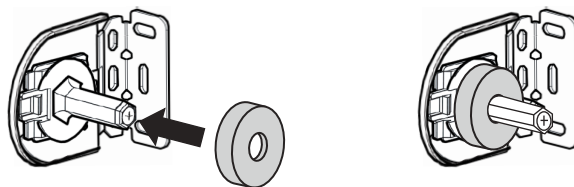
STEP 3

Attach the end caps to your brackets by sliding them onto the bracket until they click into place (End caps are optional for inside mounted shades)



STEP 4

Apply the fill-up ring to the attached idler pin. This piece of hardware is used to balance the light-gap of the shade. This is only used for motorized shades.



For an optimal balanced light gap and function, the direction of the fill-up ring needs to be applied with the concaved inner ring side facing the bracket.

STEP 5

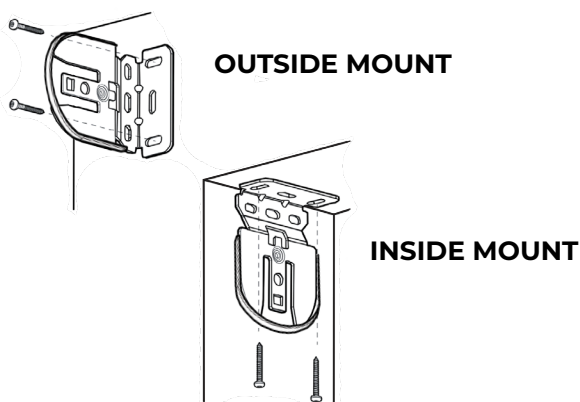
Once the hardware is preassembled, confirm that your measurements are correct. After confirmation, the shade is ready to be mounted.



It is encouraged to dry-fit the shade before any holes are drilled. This will ensure that the fully assembled shade will fit in the window and will assist in marking your drill holes.

STEP 6

Pre-drill to avoid splitting the mounting substrate. Screw the brackets onto the left and right side at the top of the window jamb, level and centered to measurements.

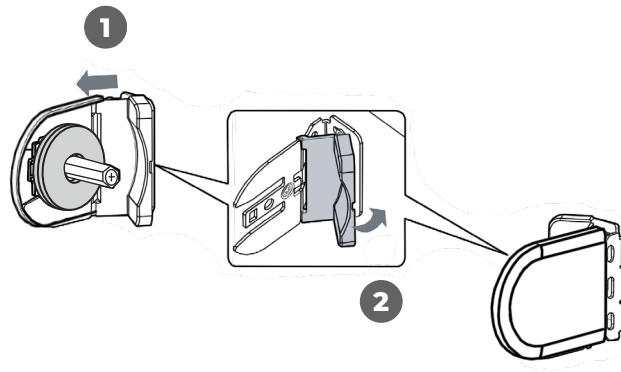


You may need to detach your idler pin to screw in your bracket if you are not able access your screw. Reattach the pin when done.

STEP 7

Attach the screw covers to the mounted brackets.

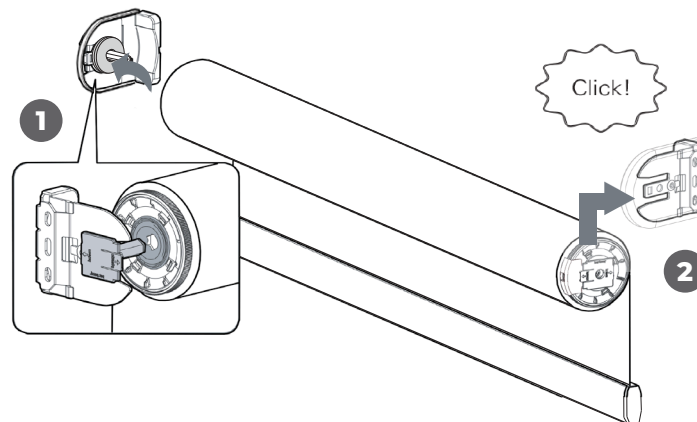
- 1 Slide the screw cover onto the bracket.
- 2 Snap to the bracket.



STEP 8

Mount the shade onto the brackets.

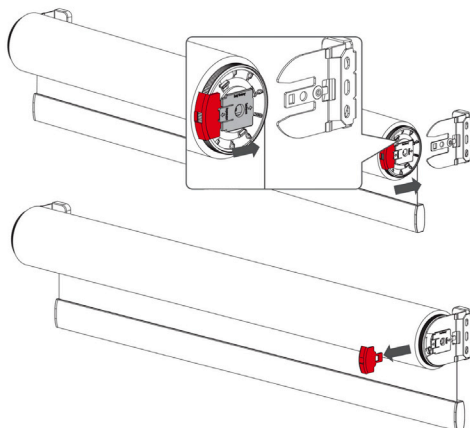
- 1 Mount the idler side of the shade onto the idler pin bracket.
- 2 Lift the control-side of the shade and connect the clip to the middle prong of the bracket securing the shade.



This guide is mainly directed toward a motorized shade install. **STEP 8** has an variation when dealing with a spring-operated shade install. Please refer to the next page.

REMOVE TENSION CLIP (MANUAL SPRING-OPERATED SHADES ONLY)

Refer to **STEP 8**. When mounting the control-side of the shade and connecting the clip to the middle prong of the bracket, the spring tension clip (shown in red) should pop out from the spring drive. This is normal. The purpose of this tension clip is to maintain the shade's tension through shipment.



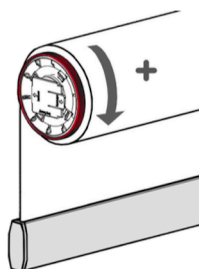
SPRING ADJUSTMENTS (MANUAL SPRING-OPERATED SHADES ONLY)

PowerShades' manual spring-pull shades come pre-tensioned with limits already set based on the measurements when ordered through the portal. If the installer needs to make any adjustments to these, please see tips below.

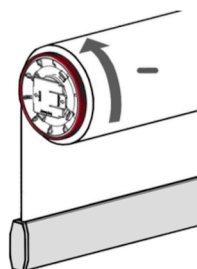
ADJUST SHADE TENSION

ADD tension to the shade by turning the spring head on the drive side **CLOCKWISE**.

LOWER tension of the shade by turning the spring head on the drive side **COUNTER CLOCKWISE**.



ADD TENSION



LOWER TENSION

Installers must strictly follow the instructions outlined in our installation guide. Failure to adhere to these guidelines could compromise the structural integrity of the shade, potentially resulting in malfunction, property damage, personal injury, or even death.