



maars LIVING WALLS®

string<sup>2</sup>

the ultimate wall, with the ultimate values



At Maars, we are always looking for ways to improve the environment and create workplaces where people feel comfortable and perform in the best possible way. That is why we came up with the idea of Living Walls.

An inspiring concept of remountable, integrated wall solutions for healthcare, office buildings, airports, education, hospitality, industry and retail, among others.

The most visionary architects worldwide choose Living Walls. They have seen us as the supplier of innovative wall solutions for over 75 years. Solutions that contribute to the productivity and well-being of employees as well as being distinctive due to their sustainable and circular nature.

In this way, we want to surprise and inspire people. By providing a unique visual experience, optimal comfort, well-being, security and privacy. Sustainable, environmentally-friendly and with Cradle to Cradle certification.

Welcome to the world of Maars!

■ [maarslivingwalls.com](https://maarslivingwalls.com)

string<sup>2</sup>







The modular, sustainable String<sup>2</sup> wall solution offers ingenious and challenging options for inspiring, atmospheric and efficient work and meeting spaces. The system combines creative and architectural options, providing maximum design versatility. String<sup>2</sup> also distinguishes itself with outstanding acoustic and fire-resistant performances.

# freedom







remountable

string<sup>2</sup>

Sustainability and circularity are in the center of Maars Living Walls design. We create products that are designed to excel in modular construction and re-use as a standard practice. The ability to reuse our products is both good for the environment and also the flexibility of your space.

- The key sustainability features of String<sup>2</sup>:
- Uniform modules; separate and quick and easy to move
  - The base of the system is steel
  - Fully demountable into reusable or recyclable parts
  - Refurbishable panels; with a new finish or workmanship the wall will last for years





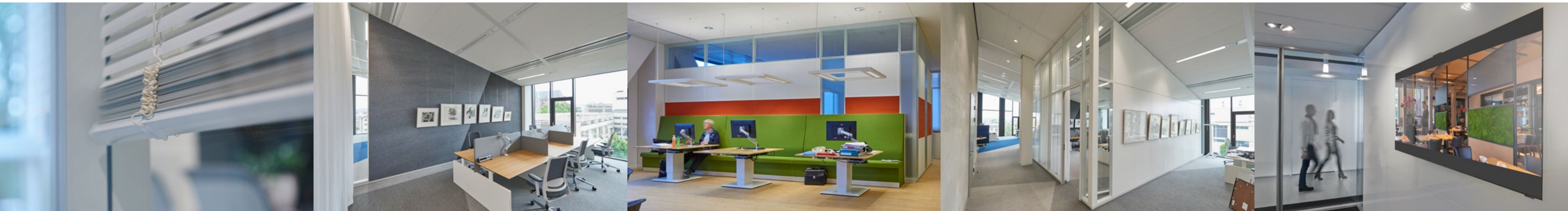
# ultimate form of functionality

String<sup>2</sup> sets the standard for functionality and the applicability of partitions. The basis for this is the very solid construction combined with an ingenious modular click system. This allows for sustainable, reusable and aesthetic designs with both horizontal and vertical lines. Can be carried out with virtually invisible joints between the panels.

Easily find the height with the String<sup>2</sup> system. By stacking - up to six meters high - or combining with other materials and elements, you can achieve a sleek overall look with an elegant aesthetic. The versatile system has already been used internationally in many ambitious projects, where the creative and constructional options have been integrated in the best possible way.







# integrated functionality

String<sup>2</sup> has been designed as the ultimate system wall, with which anything is possible. In addition to modular construction and maximum integration options, String<sup>2</sup> allows you to 'design what you think & go beyond'. Such as high sound values, fire resistance, flexibility, stacking to unprecedented heights, patented integrated ventilation studs and special studs for attaching shelves.

String<sup>2</sup> also offers integrated modules for light, air, sound, multimedia, climate control, cabinets, design panels and furniture elements. In addition, String<sup>2</sup> is suitable for the Maars Magnetics add-ons, consisting of magnetic coat hooks, picture hooks, document holders, nameplates and many other smart magnetic solutions.





Thanks to String<sup>2</sup>'s versatility, functionality and its many combination and integration options, this innovative wall system is in demand for healthcare applications. The steel walls score high in terms of hygiene, fire resistance, air tightness, durability and acoustic properties. They are also X-ray proof and can be provided with antibacterial coatings.

# health care







endless combinations

string<sup>2</sup>

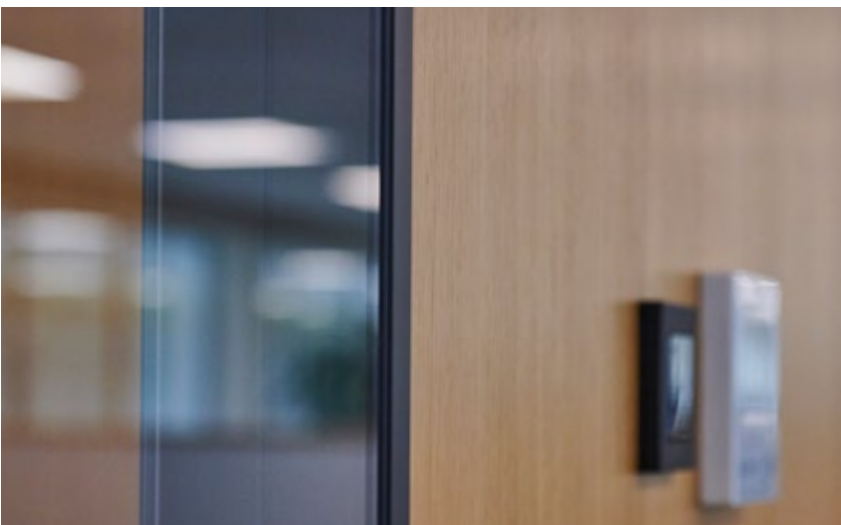
Thanks to the bi-block principle, String<sup>2</sup> can be combined almost indefinitely with materials and elements. Such as a wall covered with steel on one side and textile, wood or another material on the other. This in turn can be easily combined with various glazing options. Think of double, single or half glazing, combined with a unique absorption panel for optimal absorption and sound insulation, or fitted with integrated horizontal blinds.



15/24



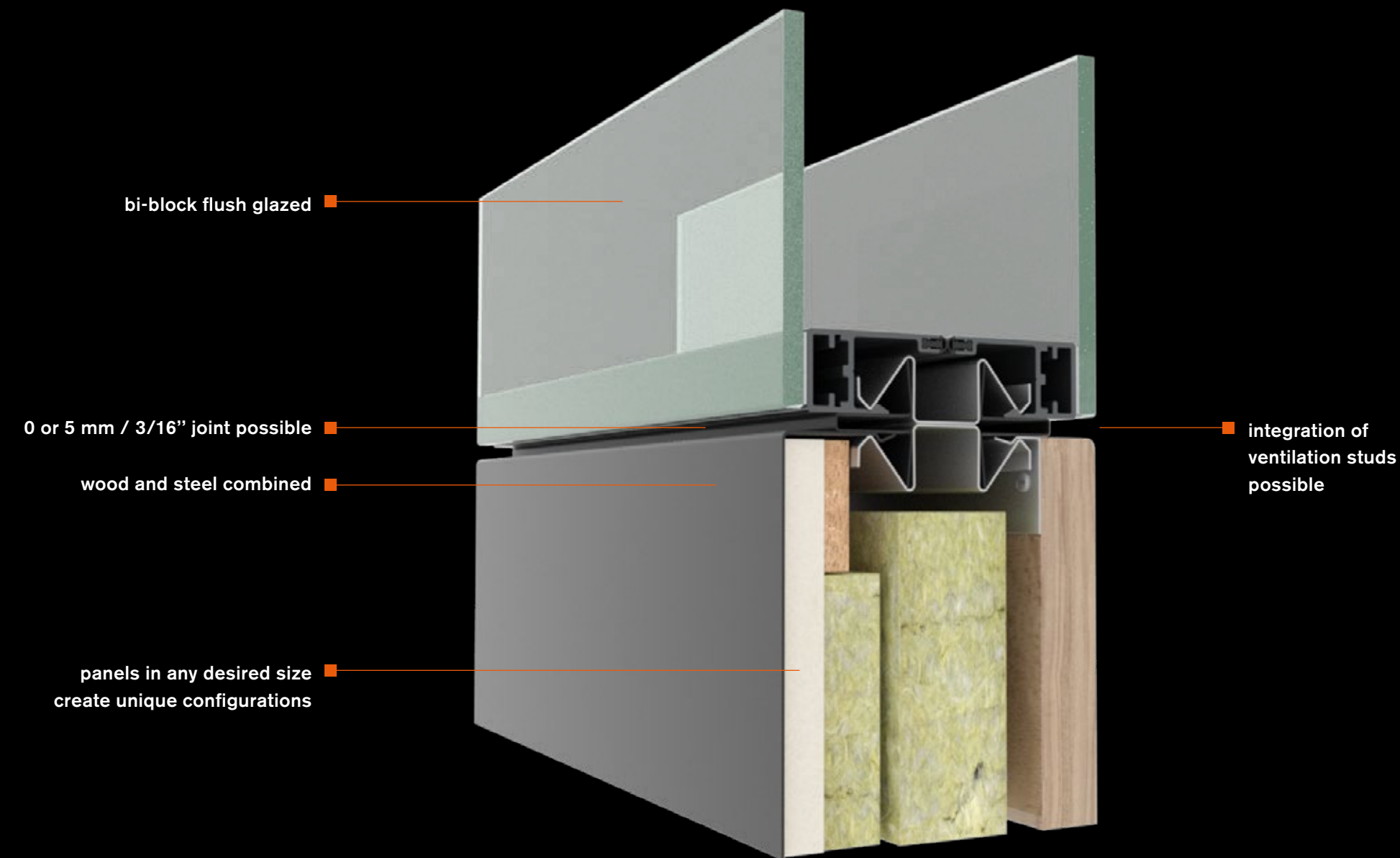




# features & benefits

All String<sup>2</sup> elements are quick and easy to connect, thanks to the innovative Maars click system. This allows you to remain flexible with regard to future modifications.

- Infinite finishing options
- Most flexible configuration
- Sound insulation up to 55 dB / 56 STC
- Fire resistance of EI 60
- Easy installation through patented click system
- Cradle to Cradle Bronze / Silver certification







# maximum performance

String<sup>2</sup> combines functionality, durability and versatility while offering maximum performance. This makes the acoustic and fire-resistant performance of String<sup>2</sup> wall solutions unprecedented. Fire resistance is rated according to EN standards with a score of EI 60.





# committed to circularity

For Maars, the well-being of people in any space is essential. We are always looking for sustainable, responsible solutions and we are constantly researching new production techniques. Reduce, reuse and recycle are firmly rooted in our business philosophy: from eco-friendly coatings to CO<sub>2</sub> offsets and the 5S 'lean manufacturing' methodology. Our products help improve your BREEAM and LEED scores. We have established an integrated operational management system for all critical quality, environmental and safety processes in order to have full control over our quality, environmental and health & safety policies. By scrutinising the entire production process, we can be more efficient in terms of production while reducing energy consumption. Maars' ongoing commitment to innovation and circularity has been recognised with a Cradle to Cradle Bronze certificate for all our wall systems and ISO-9001 / ISO-14001 certification. (Be sure to ask about our certified products.)



string<sup>2</sup>

# create and design interiors beyond your imagination

Maars 4D provides you with intelligent, highly visual and intuitive space planning software to make specifying and selling products easier. Maars 4D enables you to create realistic visualisations, including a moving fly through of your future space. This allows you to provide your customer a unique experience before you have even started the installation.



visit [www.maarslivingwalls.com](http://www.maarslivingwalls.com) to learn the possibilities

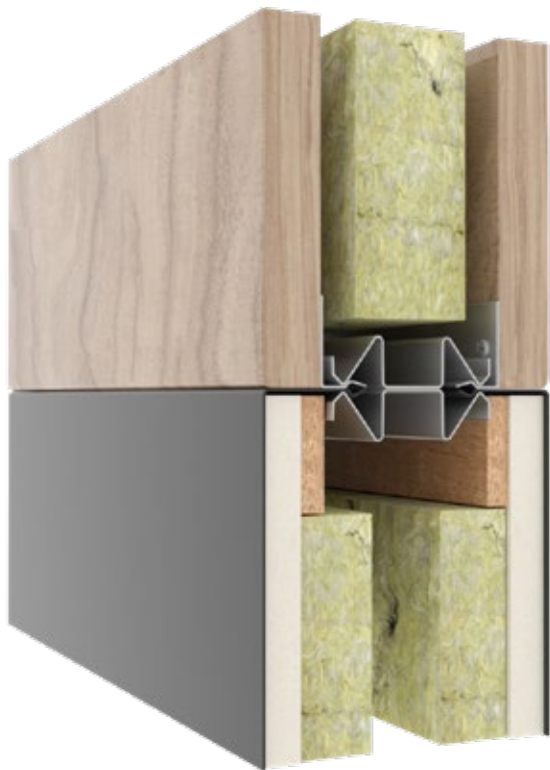
21/24



# great performance, unique details



Cross-section of the bottom of the wall.  
With adjustable skirting for flexible installation.



Seamless connection with 0 joint  
between panels with different finishes.

## technical specifications

### DESCRIPTION

Demountable system wall with steel and chipboard panels

### CONSTRUCTION

Wall thickness: 100 mm / 3 15/16"

Connections floor / ceiling 1.5 mm / 1/16"  
galvanised steel profiles

Oxidised clamp studs in galvanised steel in  
0 or 5 mm / 13/64" joint

Horizontal and vertical partitions are  
possible

### CLOSED MODULES

- 0.8 mm / 1/32" galvanised steel with  
12.5 mm / 1/2" gypsum panel and  
integrated clamp stud setting
- 18 mm / 5/8" chipboard with melamine,  
HPL or veneer top layer
- Fabric covered steel panels

### DOOR MODULES

Door frames: Steel or aluminium

Wide range of 40 mm / 1 5/8" or  
100 mm / 3 15/16" thick doors.

### GLAZED MODULES

Window frame, aluminium, double-glazed  
with 4 mm / 1/8", 6 mm / 1/4"  
or 8 mm / 5/16", glass in monoblock,  
bi-block or bi-block flush

### STANDARD SIZES

Height 3,100 mm / 10' 2 1/16"

Width 900 / 1,200 mm /

2' 11 7/16" / 3' 11 1/4"

Nominal skirting height

• 10 – 40 mm / 3/8" - 1 5/8" Ceiling

• 10 – 60 mm / 3/8" - 2 3/8" Floor

Weight approx. 35 kg/m<sup>2</sup>

### FINISHES

- Surface treatment
  - Visible metal parts: environmentally  
friendly epoxy powder coating, layer  
thickness approx. 80 mu. Based on the  
standard Maars colours. Other colours  
in consultation.
  - Extensive range of finishes in fabric,  
HPL, veneer available.
- Glazing
  - Several different options are possible,  
such as acoustic laminated, coated,  
privacy glass or sandblasted.

### INSTALLATION TOLERANCES

Floor +/- 13 mm / 1/2"

Ceiling +/- 13 mm / 1/2"

### INTEGRATION OF ELECTRICITY AND DATA CABLES

Perforated clamp studs allow wiring to  
be incorporated into the wall. Removable  
panels make the wall easily accessible for  
subsequent changes.

### SOUND

Weighted sound insulation index in  
accordance with

EN ISO 717-1

Closed modules, steel: up to RW 55 dB /  
56 STC

Closed modules, chipboard: up to  
RW 50 dB / 50 STC

Glazed modules: up to RW 51 dB /  
50 STC

Door module closed: up to RW 44 dB /  
44 STC

Door module glazed: up to RW 41 dB /  
41 STC

### FIRE

Fire resistance in accordance with  
EN 1363-2, EN1364-1 and EN 1634-1.

Closed: up to EI 60

Glazed: up to EI 60

Door: up to EI 60

### LIVING OPTIONS

Maars offers a wide range of options that  
can be integrated into our wall system,  
depending on the wall type. Ventilation  
studs, sound panels, cabinets, shelf  
supports, climate control panels, dynamic  
light, multimedia, fabric covered panels,  
privacy glass or Maars Magnetics. Ask  
your Sales Project Manager about our total  
product range.



#### products

Styleline	lineaCube
Metaline	Doors
String <sup>2</sup>	Living Options
Panorama	M923.
Horizon	Core
lalinea	

#### expertise

Office	Airport
Care & Cure	Hospitality
Education	Industrial
Revitalisation	Automotive



**maars** LIVING WALLS®

Newtonweg 1, PO Box 1000  
3840 BA Harderwijk  
The Netherlands

T +31 (0)341 46 52 11  
info@maars.nl  
www.maarslivingwalls.com