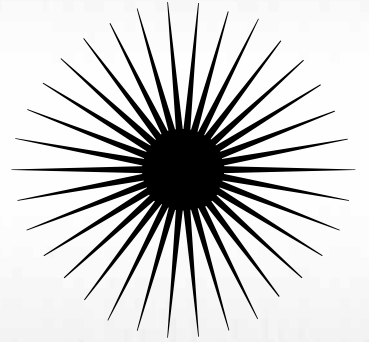
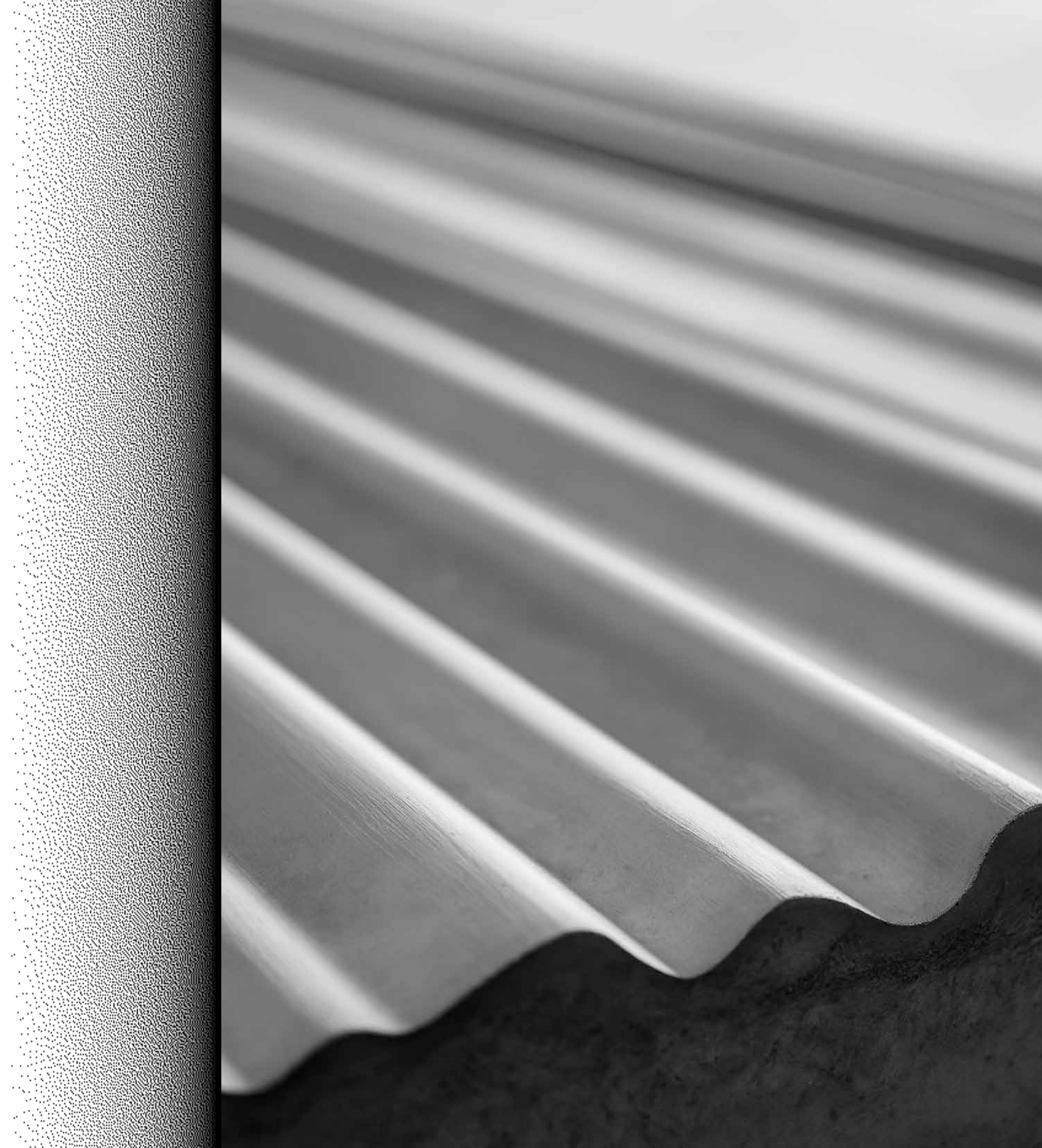


**FORM**  
**FOLLOWS**  
**FUTURE**



FORM FOLLOWS FUTURE





# F



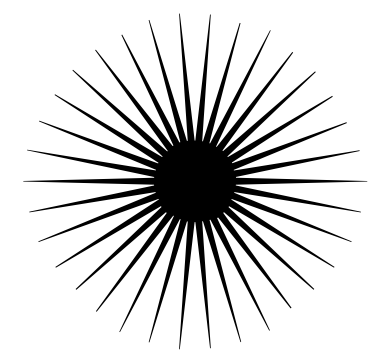
Should we look to the past for the future of architecture?

# URE

2/174 Breisgau

# UT

FORM FOLLOWS FUTURE



5

# Editorial

6

# Inspiration

18

# Future Collection

32

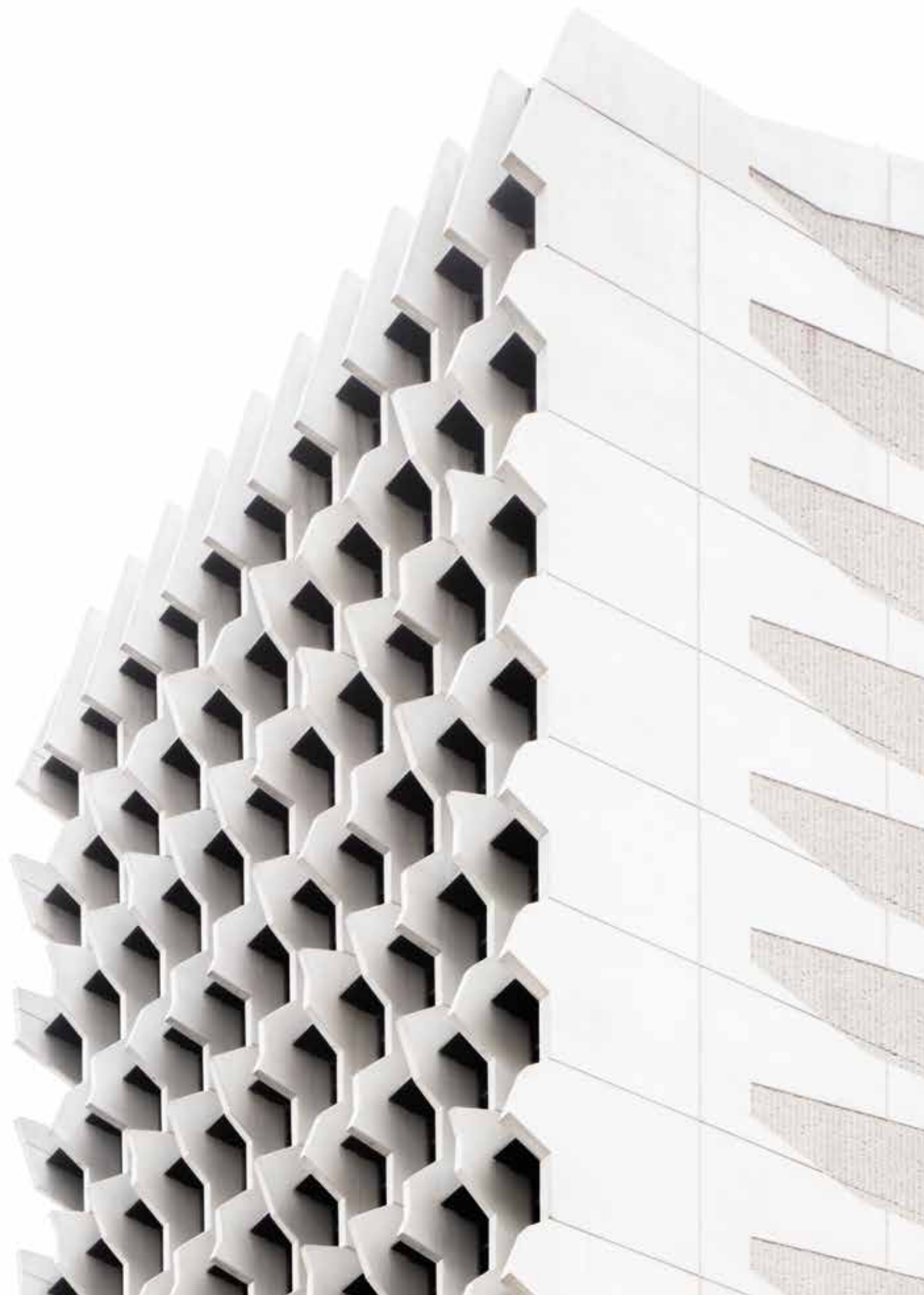
# RECKLI *SELECT*

Architecture influences how we live and work. It can be revolutionary and generate new momentum.

The latest RECKLI Lookbook covers well-known surface textures and patterns, and translates them into modern designs under the principle of Form Follows Future. From custom patterns to geometric shapes, systematic or random arrangements: a selection of our 250 SELECT textures puts the seemingly familiar into a new context. Ribbed textures hold façades out towards the sky smoothly and cleanly. Abstract texture *Victoria* seems to play Tetris on the façade while giving it a completely unique look. Our abstract texture *Dachstein* is reminiscent of stacked building blocks coming together to form a new building – perfectly staged by nature's interplay of light and shadow.

Our *Future Collection* also presents three exclusive new textures designed from the perspective of Form Follows Future. Get inspired and design the future!

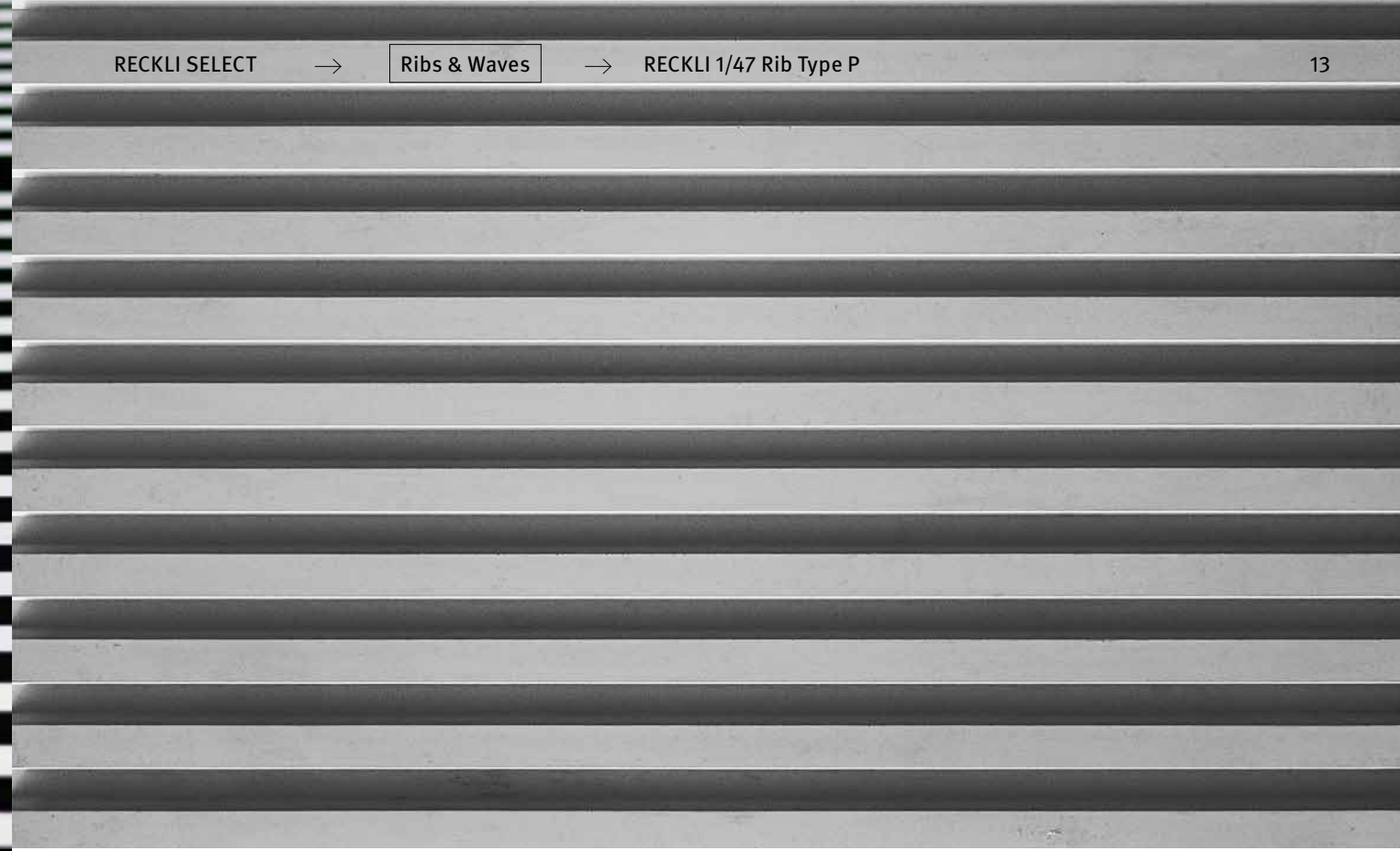




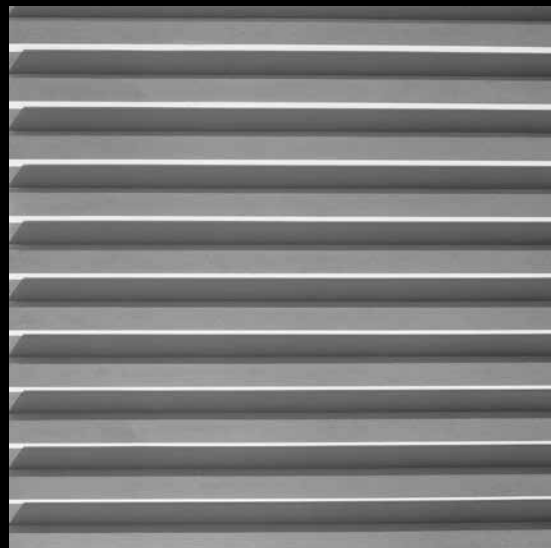






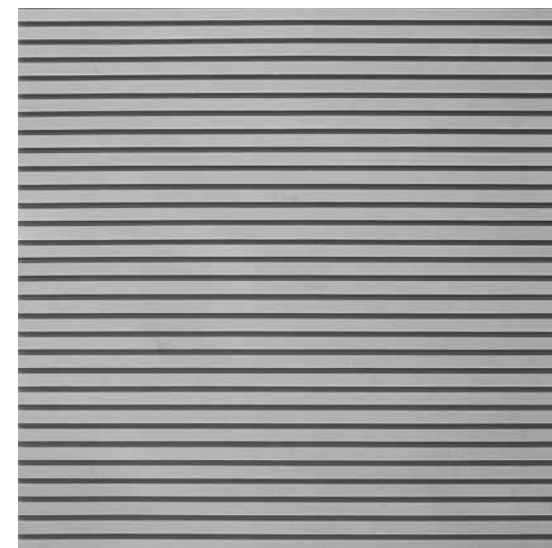
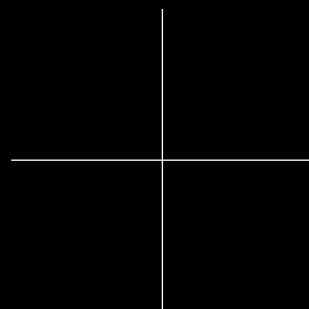


What role does the architect play in a global society?



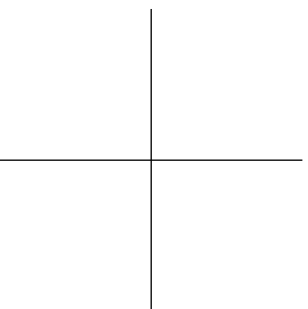
1/31 Rib Type C  
RECKLI SELECT → Ribs & Waves

A clear and smooth rib pattern with vertically aligned ribs, separated by 40-millimeter wide joints.



2/77 Tigris  
RECKLI SELECT → Ribs & Waves

A clear and smooth rib pattern with vertically aligned ribs, separated by 9-millimeter wide joints.

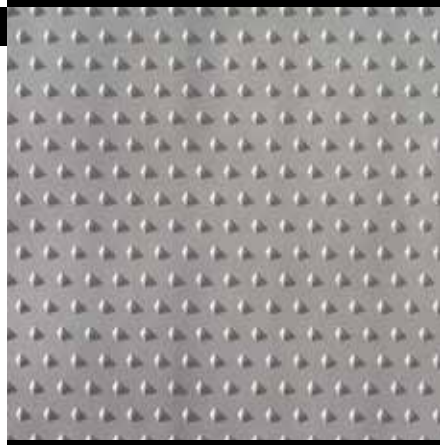




2021

TEX

TEXTURE

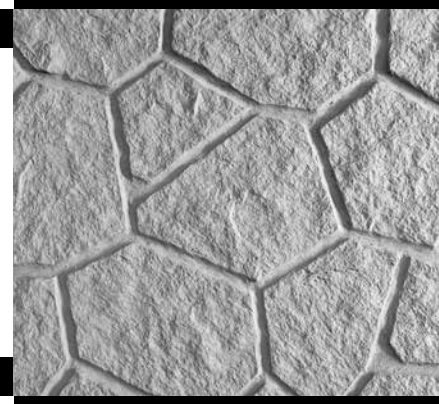


2/174 Breisgau

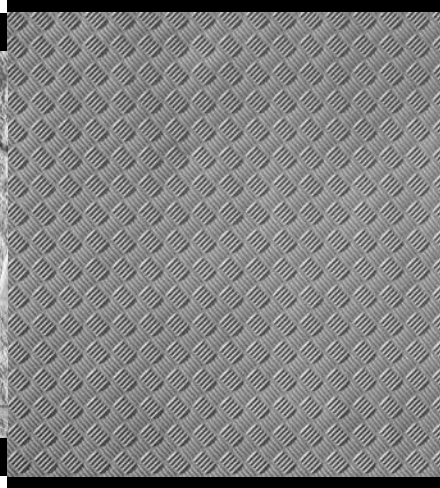
TEX

2/100 Year

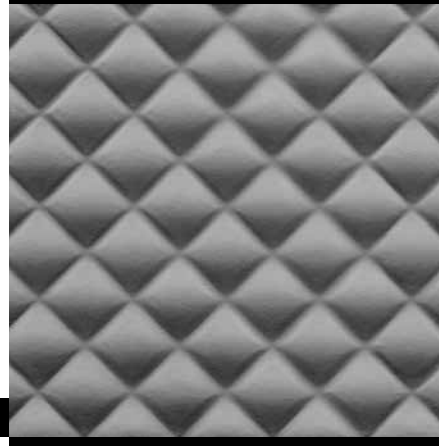
TEX



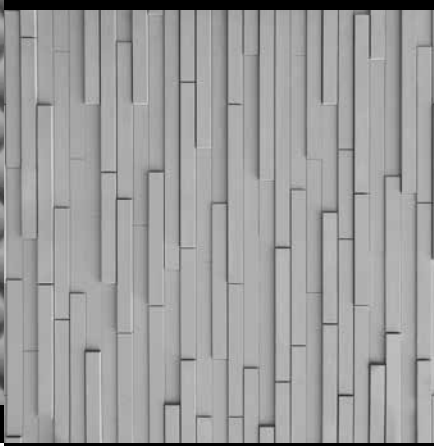
2/239 Sumatra



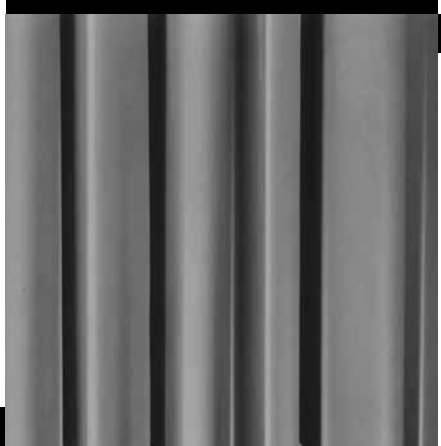
2/117 Ripple 5-Fold



2/210 Venezia

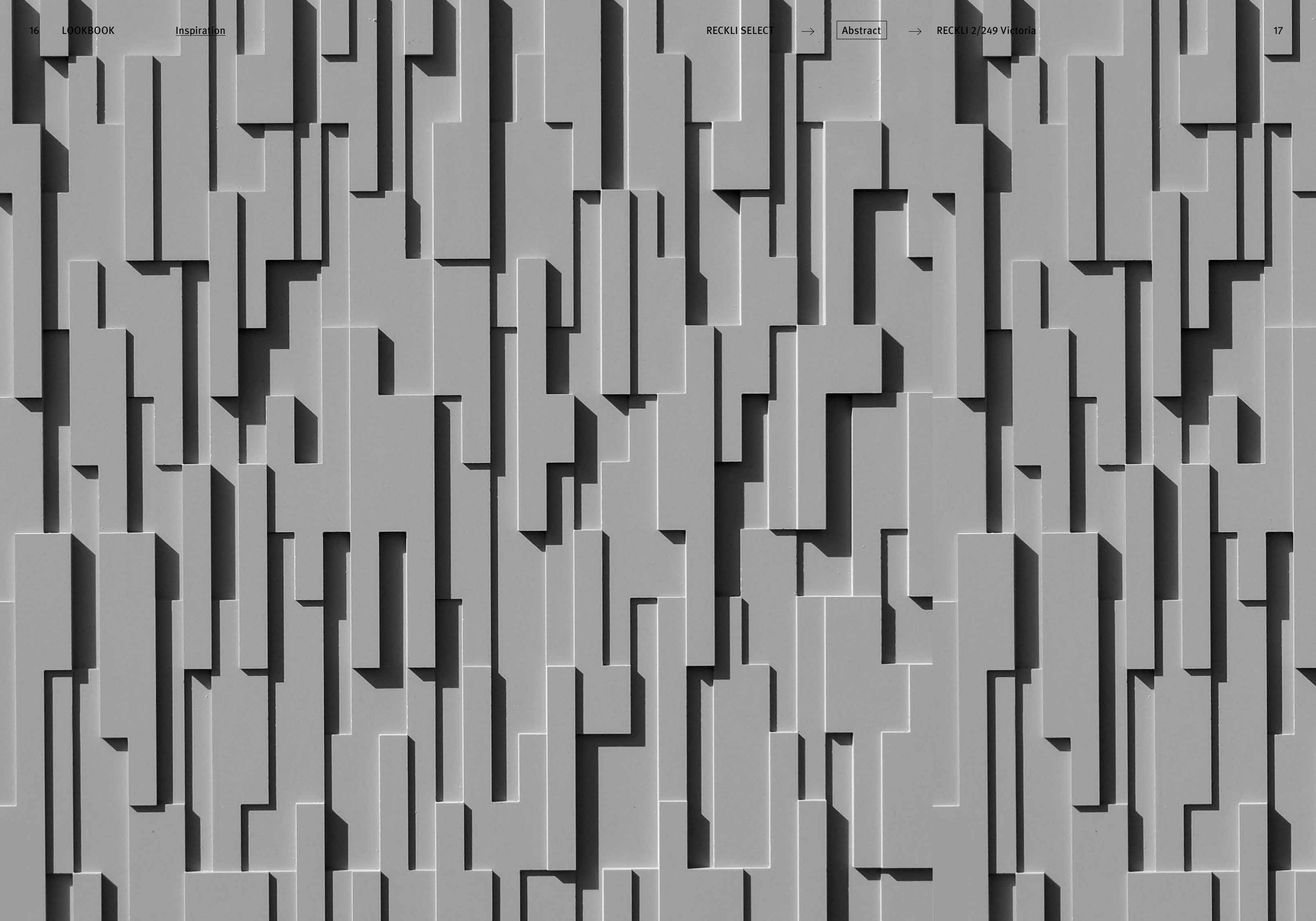


2/195 Gysenberg



2/701 Liberty

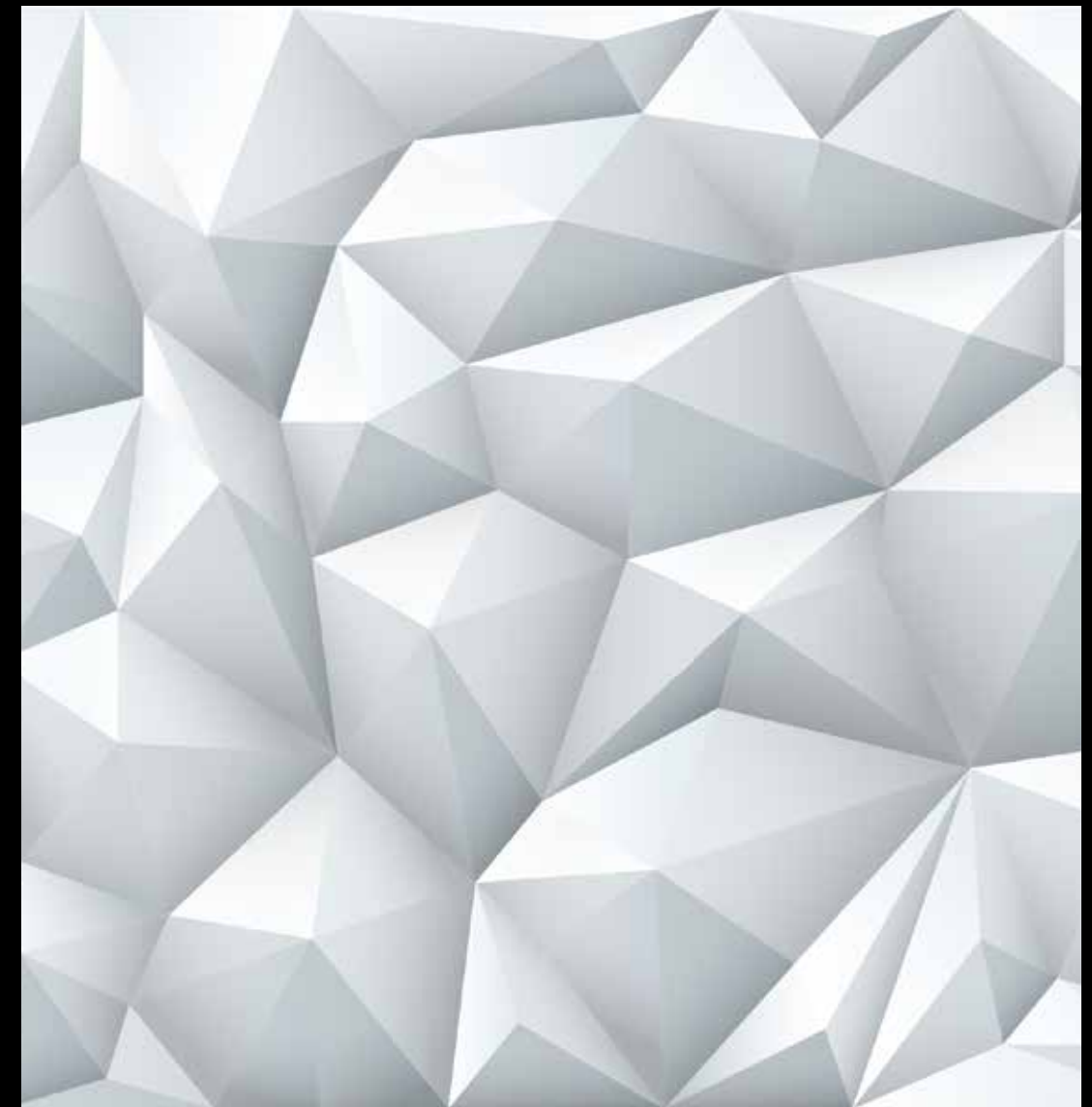
TEXTURE





# FUTURE COLLECTION

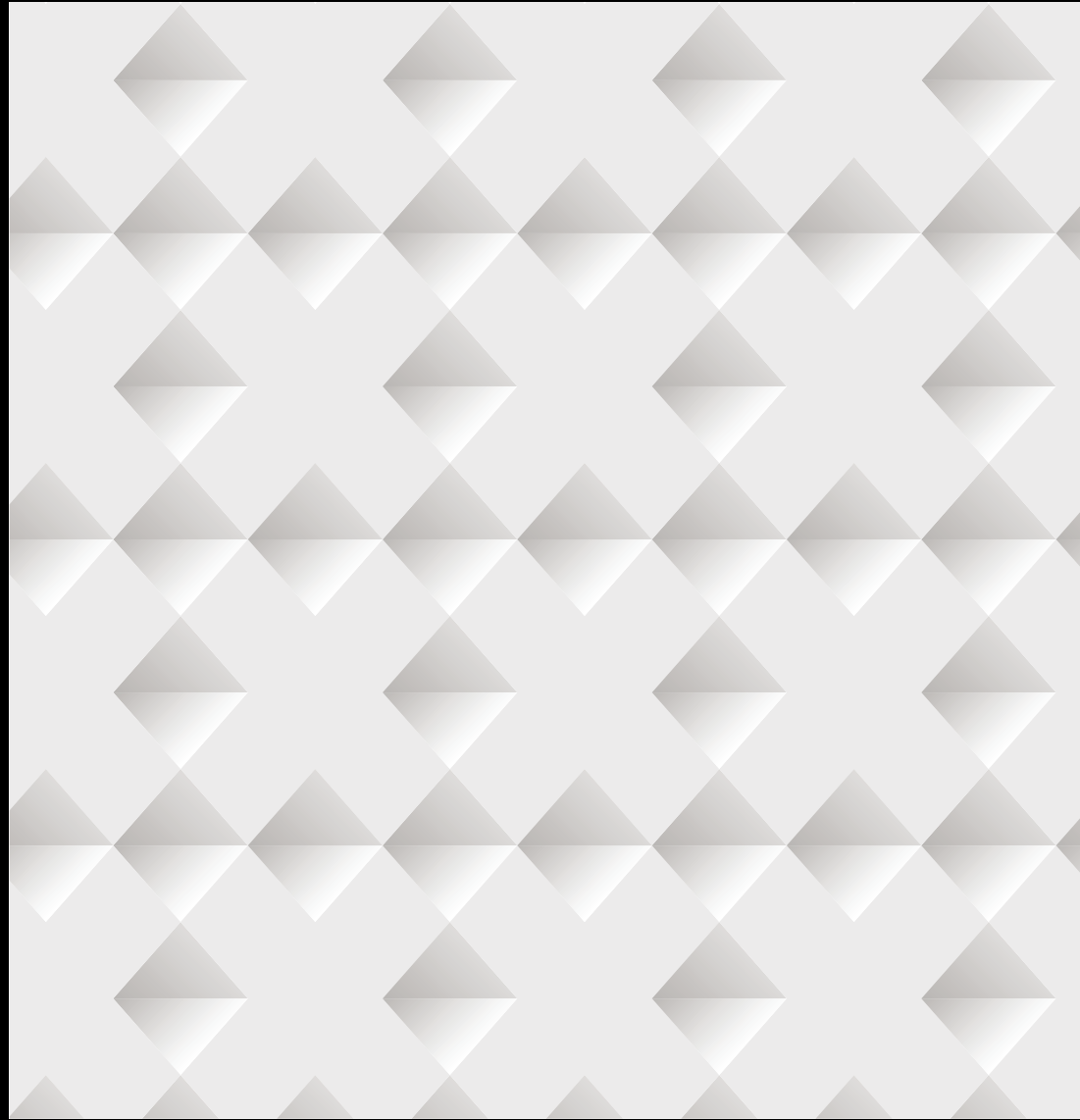
New patterns



# HAZE

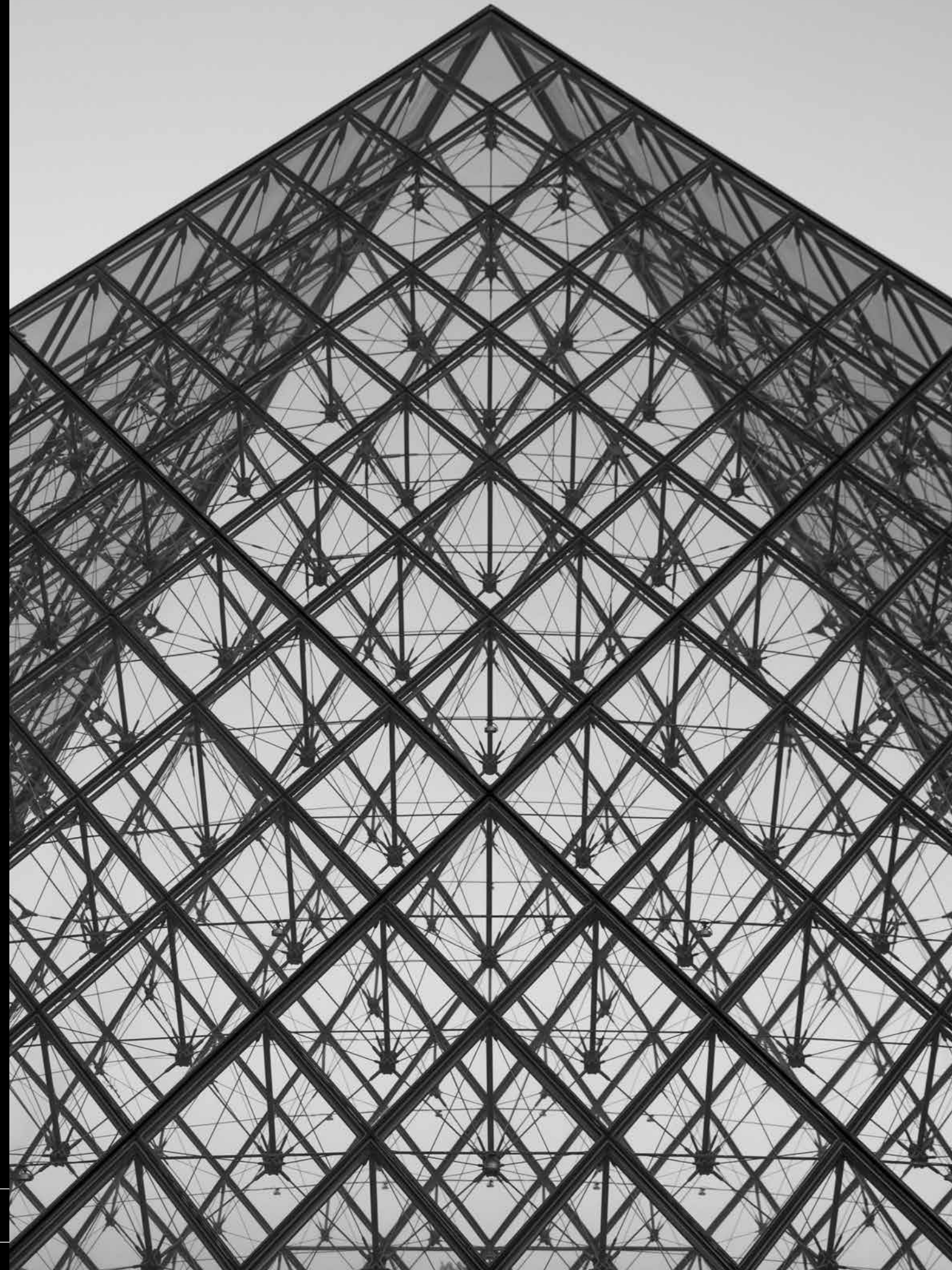
A shroud of mist or a rugged cliff face? This fantasy texture is made up of rows of polygons of various sizes, giving the finished surface a dominant ruggedness. Clean edges and corners create a heterogenous surface that will really come into its own on a façade.





# TETRA

You could say this texture arose from the architecture of the Louvre's glass pyramids. The seamless, smooth and geometric surface with triangular cutouts gives this texture a truly architectural character.



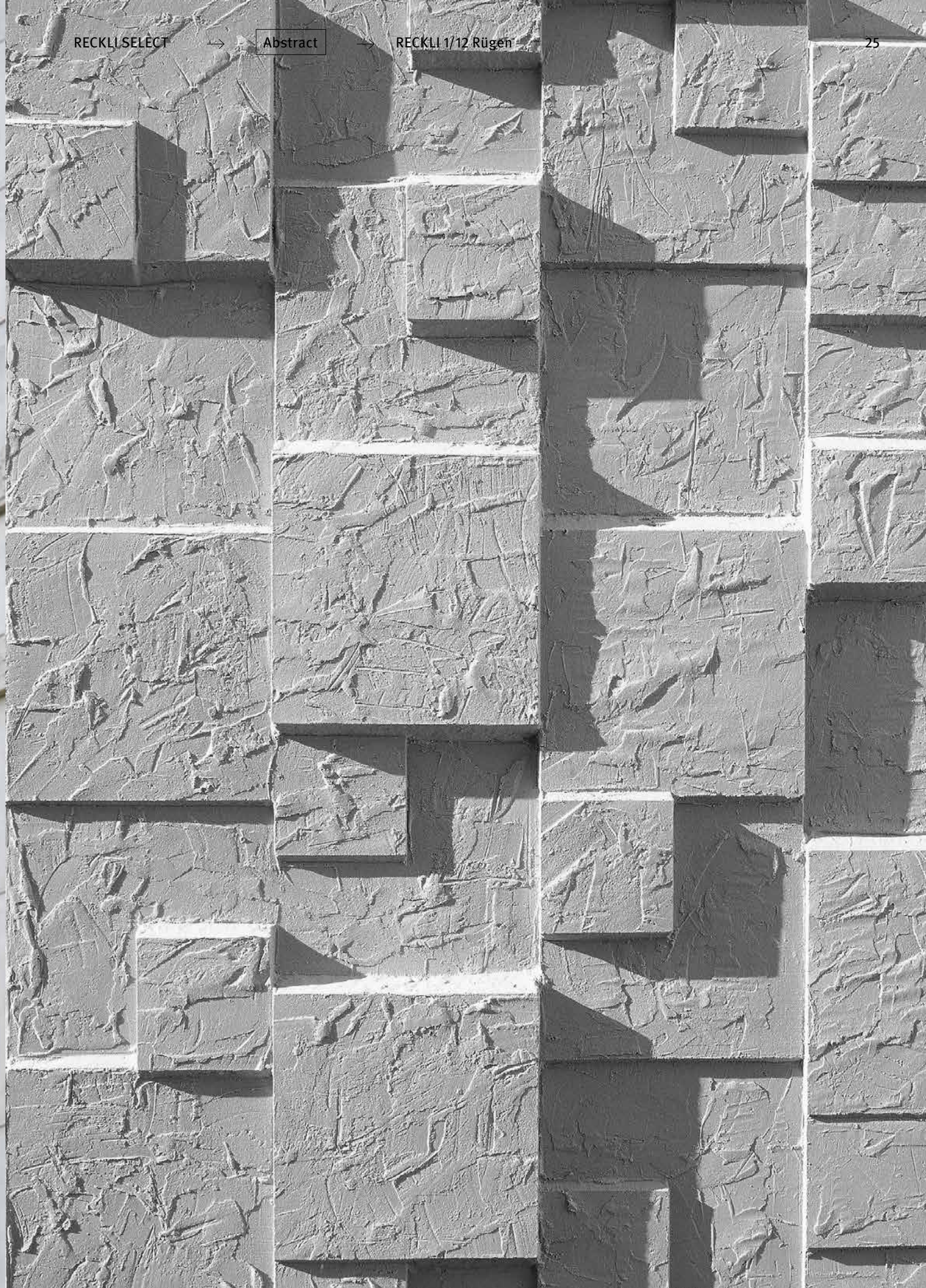




# MOTION

Modern yet playful. This texture stands out through its smooth, horizontal lines. The lines' differing heights and depths generate additional tension, creating an abstract, geometric atmosphere.

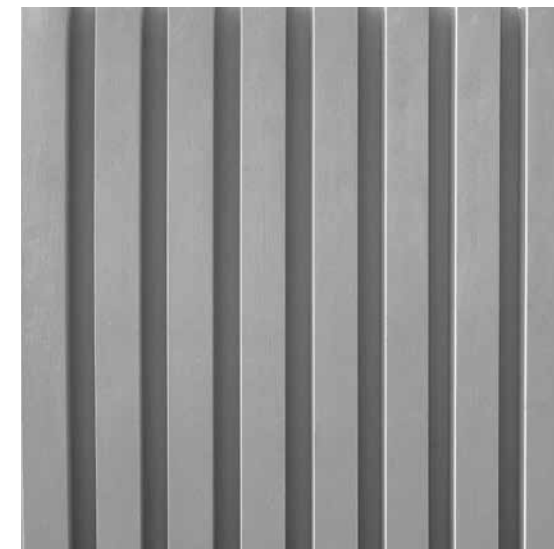








## Can architecture solve problems or just react to them?

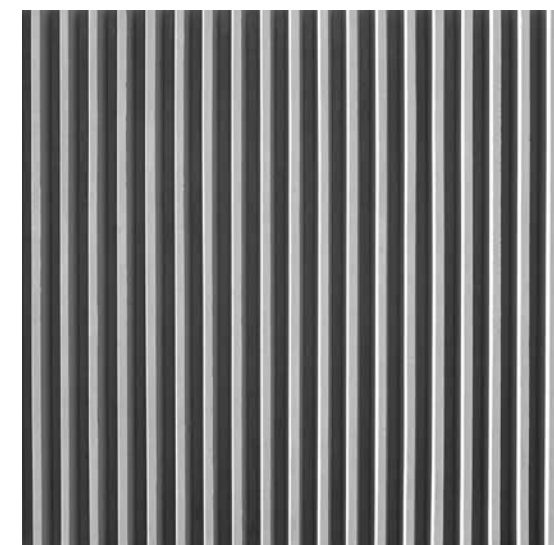


1/46 Rib Type N

RECKLI SELECT →

Ribs & Waves

A clear and smooth rib pattern with vertically aligned ribs, separated by 40-millimeter wide joints.



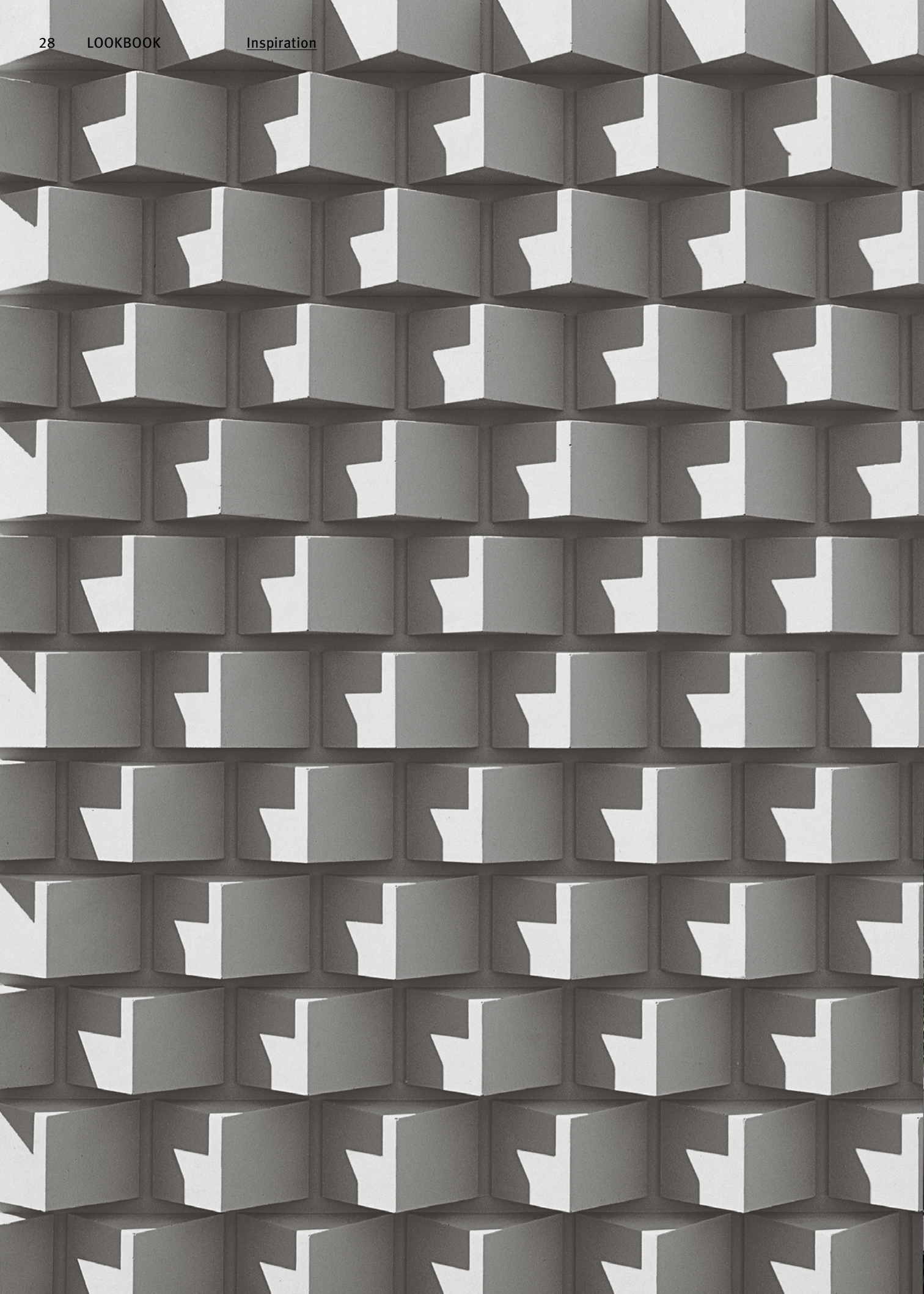
1/148 Lanzarote

RECKLI SELECT →

Ribs & Waves

A clear and smooth rib pattern with vertically aligned ribs, separated by 15-millimeter wide joints.







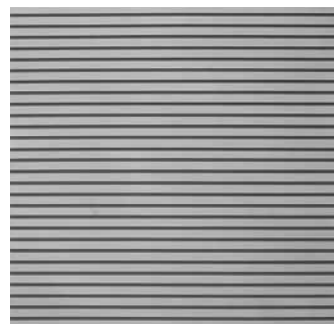
# RECKLI *SELECT*



2/174 Breisgau

Abstract

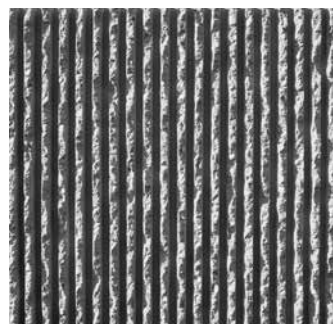
← P. 2, 15



2/77 Tigris

Ribs & Waves

← P. 13



1/41 B Ibiza

Ribs & Waves

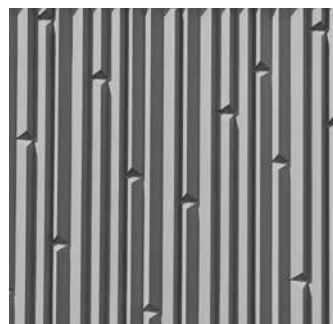
← P. 6



2/100 Jahreszahl

Functional

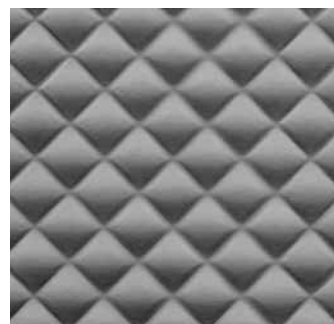
← P. 14



2/236 California

Abstract

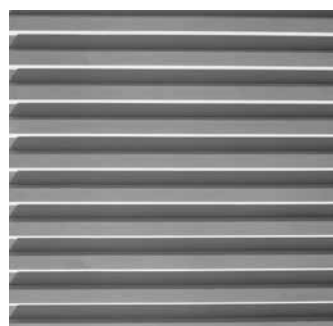
← P. 10



2/210 Venezia

Abstract

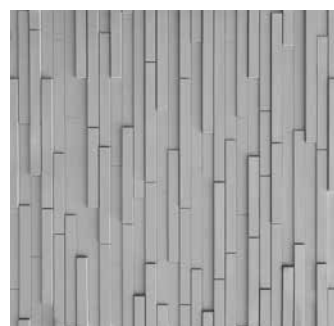
← P. 14



1/31 Rib Type C

Ribs & Waves

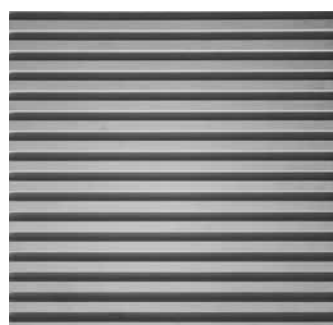
← P. 12



2/195 Gysenberg

Abstract

← P. 14



1/47 Rib Type P

Ribs & Waves

← P. 13



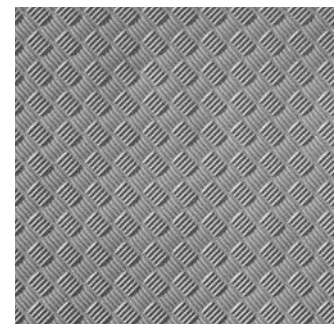
2/239 Sumatra

Stone & Masonry

← P. 15

For a complete overview of all formliners including all technical data please refer to:

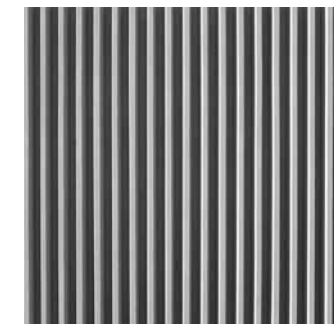
→ [reckli.com](https://reckli.com)



2/117 Ripple 5-Fold

Functional

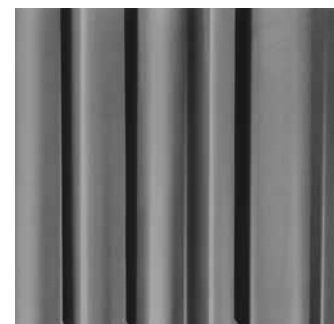
← P. 15



1/148 Lanzarote

Ribs & Waves

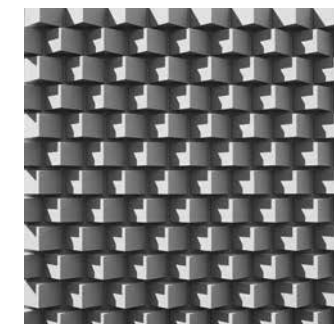
← P. 27



2/701 Liberty

Abstract

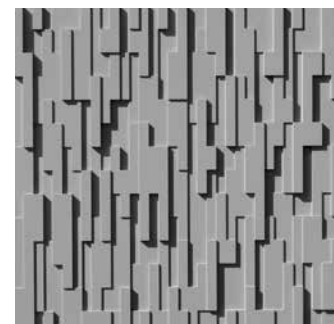
← P. 15



2/141 Dachstein

Abstract

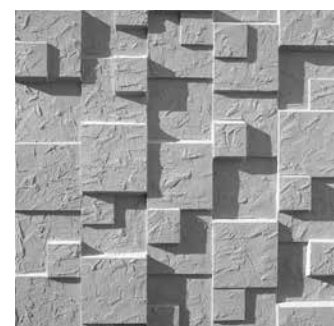
← P. 28



2/249 Victoria

Abstract

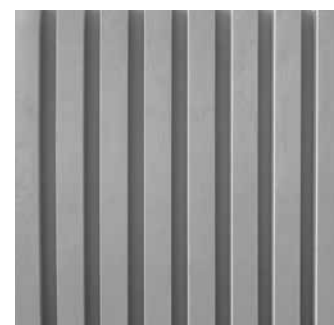
← P. 16, 17



1/12 Rügen

Abstract

← P. 25



1/46 Rib Type N

Ribs & Waves

← P. 27



RECKLI Lookbook #2  
FORM FOLLOWS FUTURE  
August 2021

Publisher  
Reckli GmbH, [www.reckli.de](http://www.reckli.de)  
Gewerkenstraße 9a, 44628 Herne, Deutschland  
T +49 2323 17060, F +49 2323 170650

Dr. Bernd Trompeter (Managing Director)  
Lutz Hammer (Director Marketing & Business Development),  
[marketing@reckli.de](mailto:marketing@reckli.de)  
Corinna Uphaus, Anna Habersack, Deniz Akkus (Marketing Assistant),  
[marketing@reckli.de](mailto:marketing@reckli.de)

Responsible Agency  
ONEWORX GmbH, [www.oneworx.de](http://www.oneworx.de)  
Mathildenstraße 15a, 45130 Essen, Deutschland  
Ina Bunge (Creative Direction), [ina.bunge@oneworx.de](mailto:ina.bunge@oneworx.de)  
Jasmin Lörchner (Editor-In-Chief), [jasmin.loerchner@oneworx.de](mailto:jasmin.loerchner@oneworx.de)

Printing  
becker druck F.W. Becker GmbH, [www.becker-druck-verlag.de](http://www.becker-druck-verlag.de)  
Grafenstraße 46, 59821 Arnsberg

Is architecture  
there for  
everyone?

