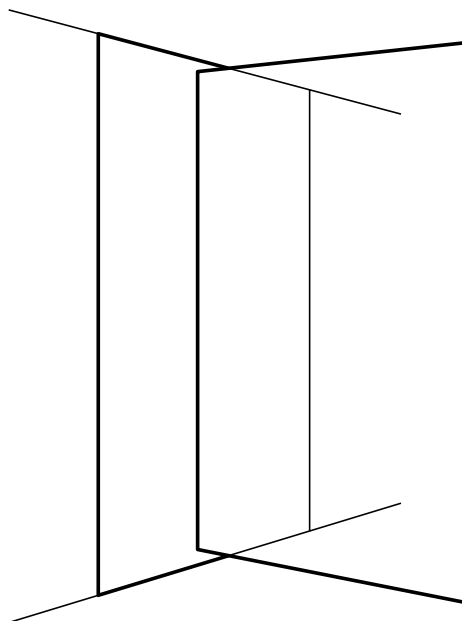




# SOSOARES

ALUMINIUMSYSTEMS&GLASS  
FOR ARCHITECTURE



premium lines

# SOSOARES

## Introduction

Group Sosoares has its origins in the creation of the society «Sosoares - Máquinas e Ferragens, Lda.» in 1979. Since then, it has been growing, currently consisting of four companies that complement each other in design, development, production and trading of aluminum frames and glass for architecture whose own brand is Sistemas Euro 2000®. We therefore seek to solve all technical and aesthetic constraints required by the current modern enterprises in order to answer to the requests of the designers in new architectural trends strongly oriented towards transparency. It is the first national Group to join, in the processing and distribution, the two strongly correlated materials in frames - aluminum and glass.

## Sustainability Policy

If we take into consideration that aluminum is a metallic element which properties grant it an enormous versatility in its application/use, and which, at the same time, allows its total and continuous reuse, then we can therefore affirm that we use a green material as the basis of our work! Grupo Sosoares has a basic principle of reuse and sustainability in all its internal labor processes, from production, development and marketing to office services, fostering and encouraging all the staff to adopt the “best practices” in the company processes in order to limit as most as possible the negative consequences of our action on the environment, thus reducing our ecological footprint. Among the many principles that the Group has adopted, we would like to underline those who we consider as most relevant:

- Performing a direct and constant follow-up with the designers, as each work is unique and has its own characteristics, in order to advise the ideal aluminium frame for each solution. We therefore manage to combine efficiency and aesthetics, so that we can have in the buildings windows and doors which comply with the requirements of the designers while maintaining the capacity for energy savings;

- Refusion, Recycling aluminium scrap efficiently;
- Owning the Single Environmental Title (TUA, a portuguese environmental programme), which proves the compliance with the environmental requirements legally demanded;
- Using totally lead-free powders in powder-coating processes and reusing powder coats, thus minimizing waste;
- Betting on the preference for digital promotion of the product, whenever possible, to the detriment of printing;
- Fostering employees to use digital tools to process the information as well as to develop and study new products, using paper printing as a last resort so that they understand the need to limit as much as possible the negative impact of commercial operations on the environment, namely in terms of energy consumption, CO2 emissions and waste management;
- Joining the Class A+ Platform, we support our clients on energy efficiency matters.

## Design and product development

The group Sosoares has a Project and Product Development Department that is in permanent creative process, devising new solutions that effectively respond to the aesthetic and technical requests of the designers, always based on the fundamental principles of Innovation, Architecture and Design. It also has a specialized team that accompanies the designers throughout the study process and detailing the work, so that the solutions are most appropriate to the works that will receive them.

## Aluminium Extrusion

As a result of a whole process of creative and technical development, the Group Sosoares has the ability to design and produce dies for the extrusion of their profiles. This kind of service extends to new customers looking for solutions to their needs and that are unknown in the market.

## Anodization and Powder coating

The finishing of a profile is, basically, the “personal brand” that the designer or the client gives to the final work. Whether through painting thermosetting (Powder coating) or through an electrolytic process that promotes the formation of the final film (Anodization), Grupo Sosoares offers a very rich and wide chromatic range, perfectly certificated in terms of quality (Qualanod and Qualicoat Seaside).



## Glass processing

Complementing their systems of frames, the Sosoares Group has a glass processing unit equipped with the latest technology, which produces all kinds of glass on the market, highlighting here laminated glass of thermal and acoustic control, security, tempered, tempered with HST, decorated with glazed digital painting, among others.



# CONTENTS

minimalist systems	p. 7
sliding systems	p. 27
opening systems	p. 33
composite panels	p. 42
decorative facade	p. 43
pergola	p. 44
shading blades system	p. 45
all systems	p. 47
glass	p. 52
handles & cremones	p. 54









# MINIMALIST SYSTEMS



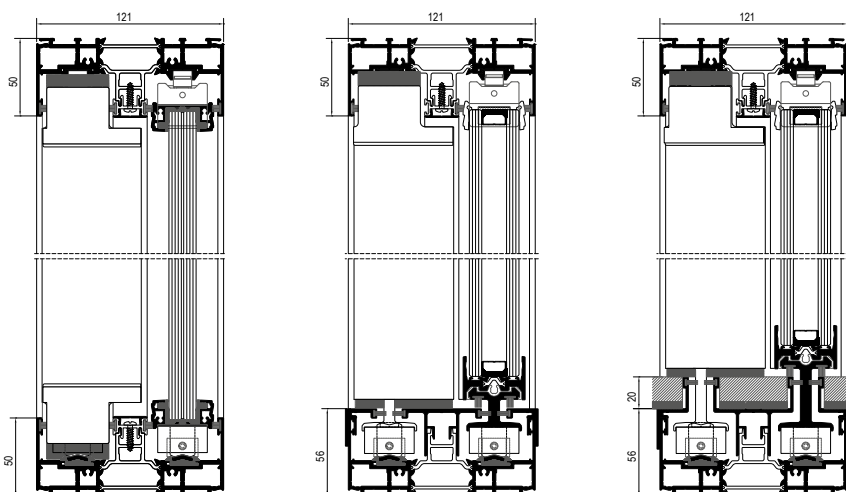


# OS minimalist sliding system with thermal break

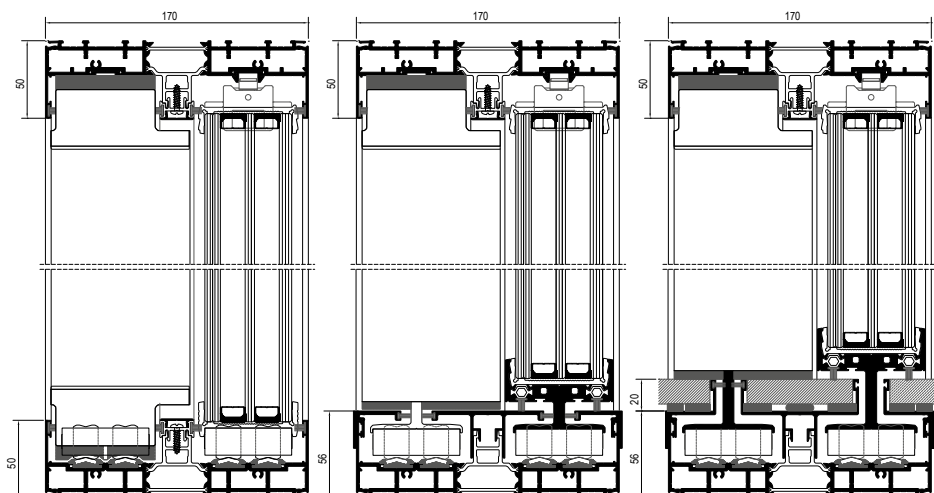
Specially conceived for larger frames, the OS minimalist sliding system rose as an answer to the most contemporary architectural trends, aiming to combine the maximum transparency with the minimum structural view, in all its sill versions: Traditional, Concealed with aluminium cover and Concealed with continuous flooring. Combined with the motorized opening system, the OS System allows the design of frames of large

dimensions, allowing as such an extra area of glazing. To the three strands of our minimalist sliding OS system - OS-Simple, Double and Triple, we now add the version OS-Concealed Sill. Whether it is with the view of the sill in aluminium or with the same fully embedded floor, this system endows the transition between inner and outer spaces in a continuous way, enabling as such an easier passage, even for people with reduced mobility.

**OS-Simple | OS-Double+ [32mm]**



**OS-Triple [56mm]**





SABATER HOUSE | SPAIN | FRAN SILVESTRE ARCHITECTS | FERNANDO GUERRA PHOTOGRAPHY

## OS-Simple | OS-Double<sup>+</sup>

### Features

Maximum area/sash*	8,00m <sup>2</sup>
Maximum weight/sash*	500Kg
Maximum height/sash*	4000mm
Filling OS-S	10mm   12mm   16mm
Filling OS-D+	32mm   35mm

\*For other dimensions, contact our Thecnical Department

### Test: CXL 123/19 - ITeCons

Air Permeability	4
Water Tightness	7A
Wind Resistance	B

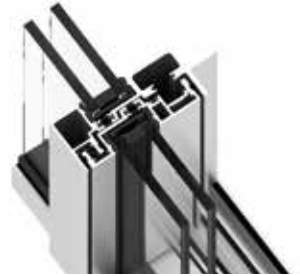
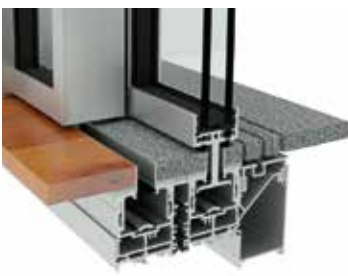
### Thermal Values

U <sub>w</sub>	= 1,48 W/m <sup>2</sup> K*
U <sub>g</sub>	= 1,0 W/m <sup>2</sup> K

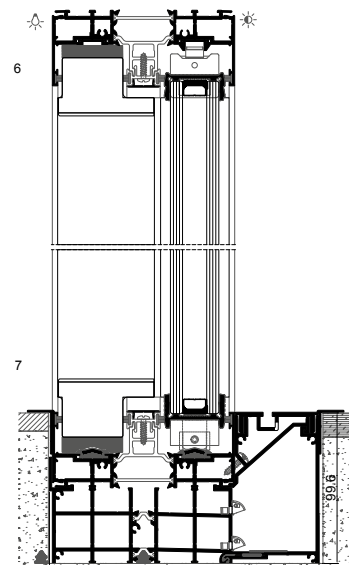
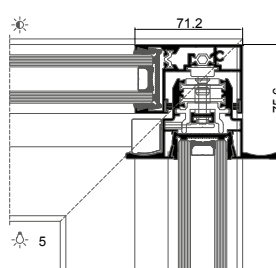
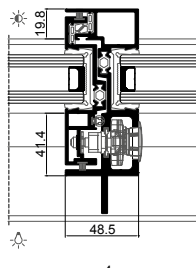
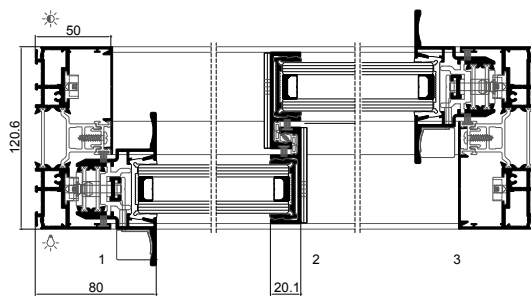
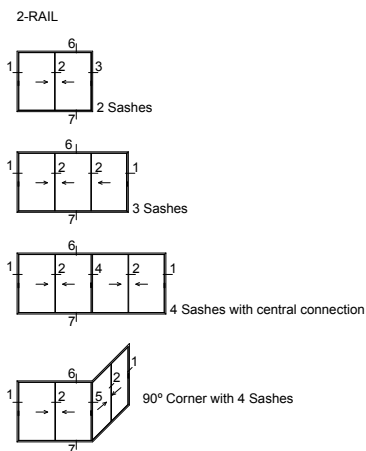
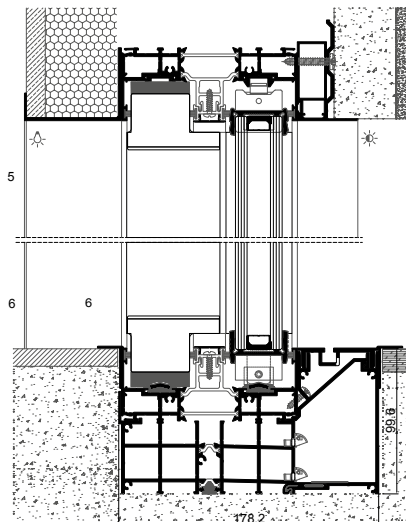
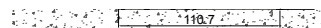
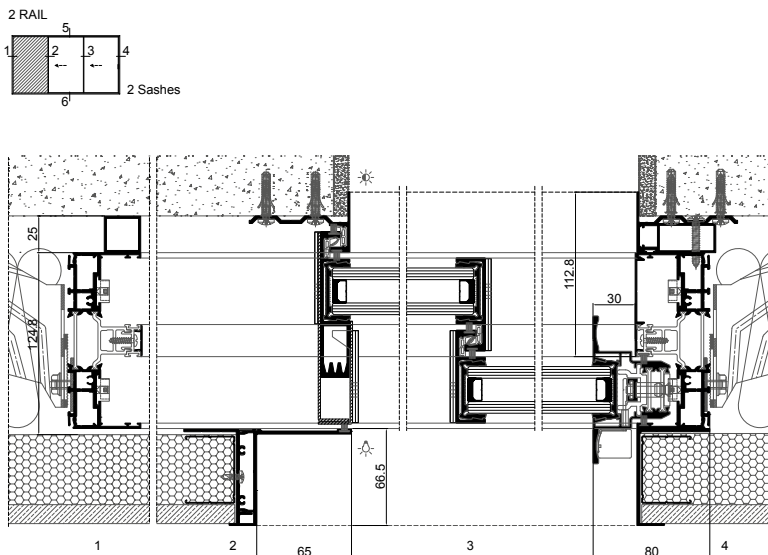
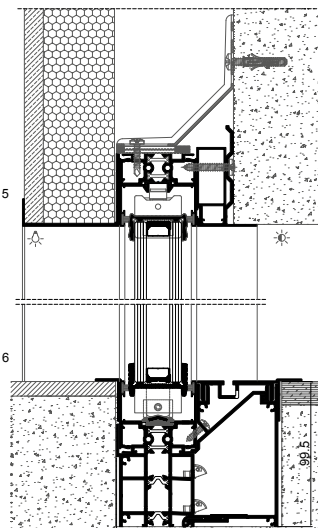
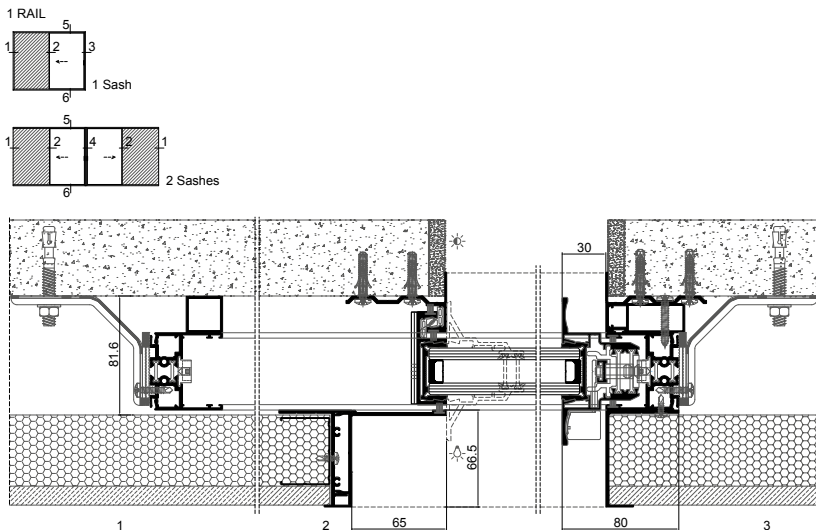
\*Calculation performed considering a typology with traditional sill

### Acoustic Insulation

Test	ACL 193-19 - ITeCons
R <sub>w</sub>	= 38dB (-1; -4)
R <sub>w</sub> (IGU)	= 42dB



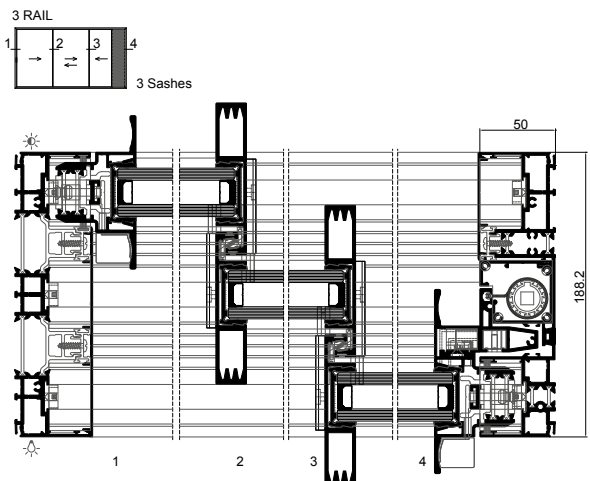
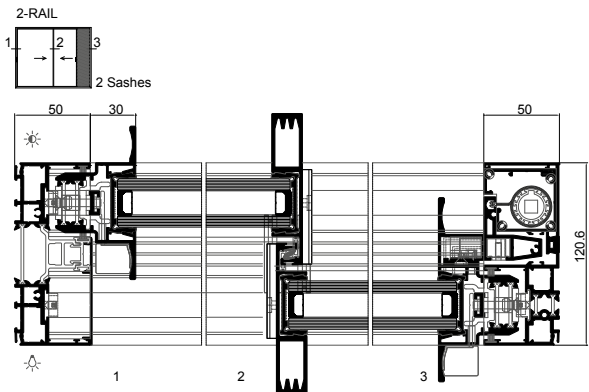




All typologies presented can be executed with a concealed sill and concealed sill with continuous flooring

# OS-D+ - Fly Net

The Fly Net developed by Grupo Sosoares is a protection net against insects, fully integrated into the window profile, thus allowing air circulation without disturbances from the outside. The net unrolls vertically along with the sheet, releasing it at a specific opening and rolling up until it is perfectly embedded in the door frame.





HOUSE IN ÍLHAVO | PORTUGAL | M2SENOS ARQUITECTOS | IVO TAVARES STUDIO



HOUSE IN RISHON LEZION | ISRAEL | SHARAR ROSENFIELD ARCHITECTURE | SHAI EPSTEIN PHOTOGRAPHY







HOUSE OF SILENCE | SPAIN | FRAN SILVESTRE ARCHITECTS | FERNANDO GUERRA PHOTOGRAPHY

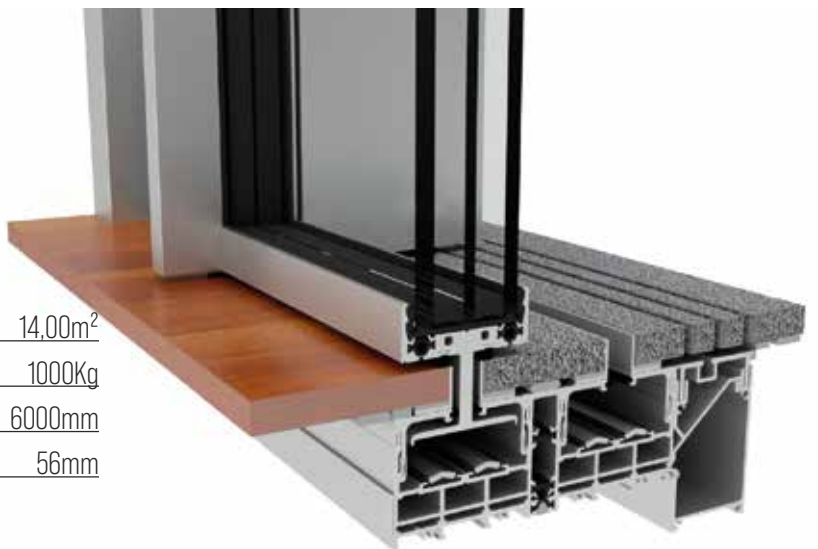


## OS-Triple

### Features

Maximum area/sash*	14,00m <sup>2</sup>
Maximum weight/sash (with motorization)*	1000Kg
Maximum height/sash*:	6000mm
Filling	56mm

\* For other dimensions, contact our Technical Department





HOUSE OF SILENCE | SPAIN | FRAN SILVESTRE ARCHITECTS | FERNANDO GUERRA PHOTOGRAPHY

### Thermal Values UNE-ISO 13947:2005

$U_w$  = 1,10 W/m<sup>2</sup>K

$U_g$  = 0,6 W/m<sup>2</sup>K Triple glazing



JD HOUSE | PORTUGAL | RUI ROSMANINHO ARCHITECTURE



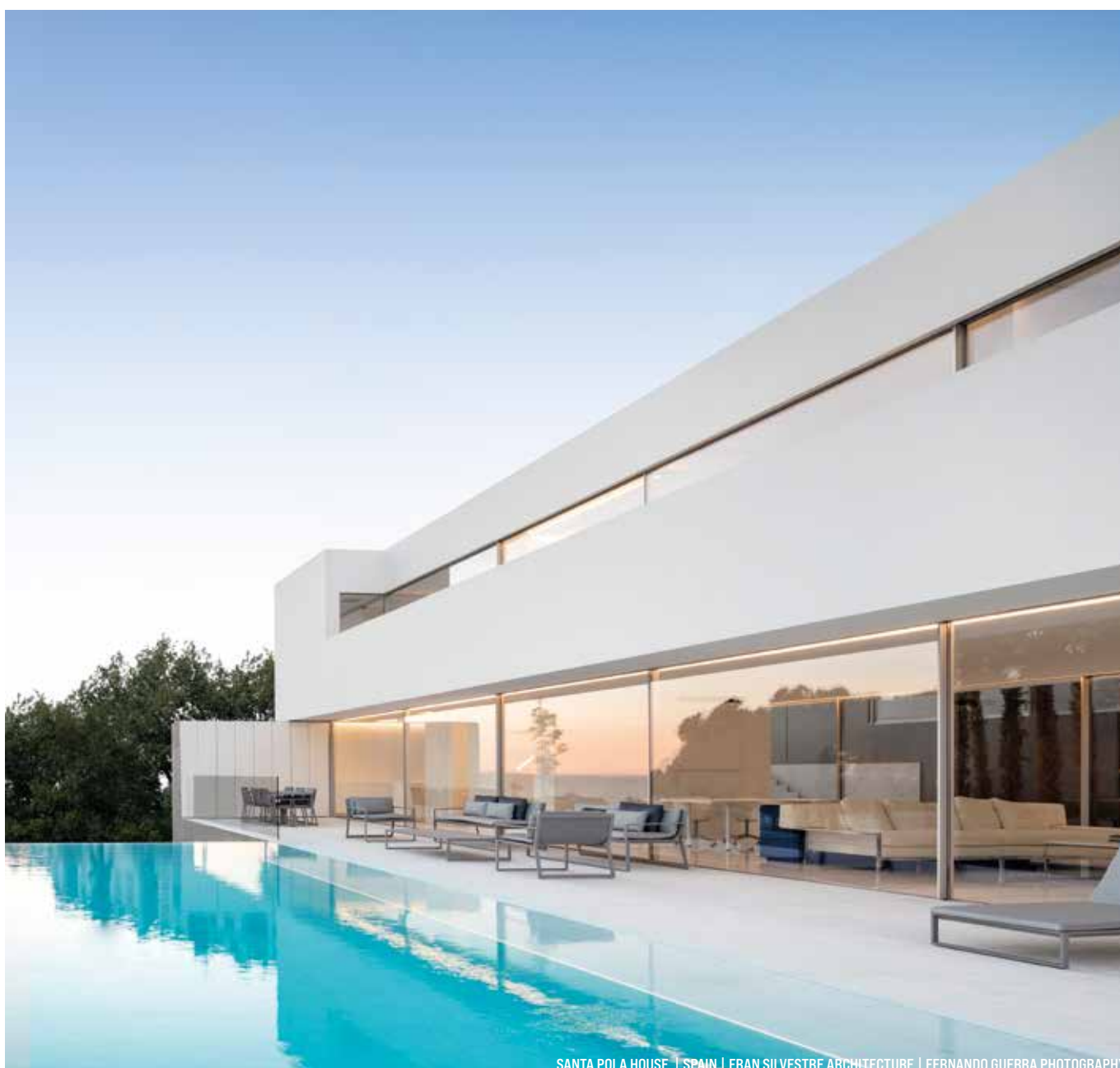
PK HOUSE | ISRAEL | RACHEL SHEINFELD ARCHITECTURE | LIOR TEITLER PHOTOGRAPHY



TV HOUSE | ISRAEL | ZVI GERSH ARCHITECT | AMIT GERON PHOTOGRAPHY



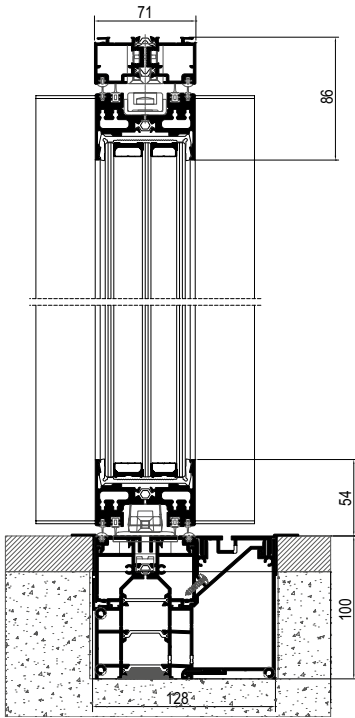
HOUSE | SWEDEN | REALESTELLIGENCE PART OF INVESTELLIGENCE GROUP



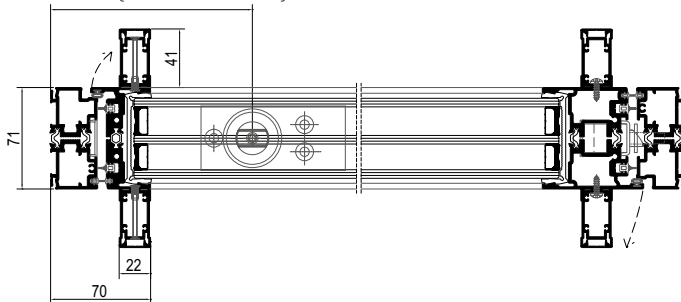
SANTA POLA HOUSE | SPAIN | FRAN SILVESTRE ARCHITECTURE | FERNANDO GUERRA PHOTOGRAPHY

# OS-PIVOT minimalist pivoting system with thermal break

Following the concept of minimalist windows for architecture and in order to meet the needs of its most demanding customers, Sosoares developed the minimalist Pivot system to complement the sliding component of OS. Thus it is possible to equip the building of a coherent language in terms of frames. Specially designed large dimensions, this new system allows to achieve the weight of 500Kg per pair



minimum 200mm (without reinforcement)  
350mm (with reinforcement)



## Features

Maximum weight/sash	500Kg
Maximum height/sash	1500mm*
Filling double glazing / triple glazing	56mm
* For other dimensions, contact our Technical Department	

## Thermal Values

U <sub>w</sub>	= 1.24 W/m <sup>2</sup> K
U <sub>g</sub>	= 0.5 W/m <sup>2</sup> K - Triple glazing
U <sub>w</sub>	= 1.75 W/m <sup>2</sup> K
U <sub>g</sub>	= 1.10 W/m <sup>2</sup> K - Double glazing



34  
PURO HOMES

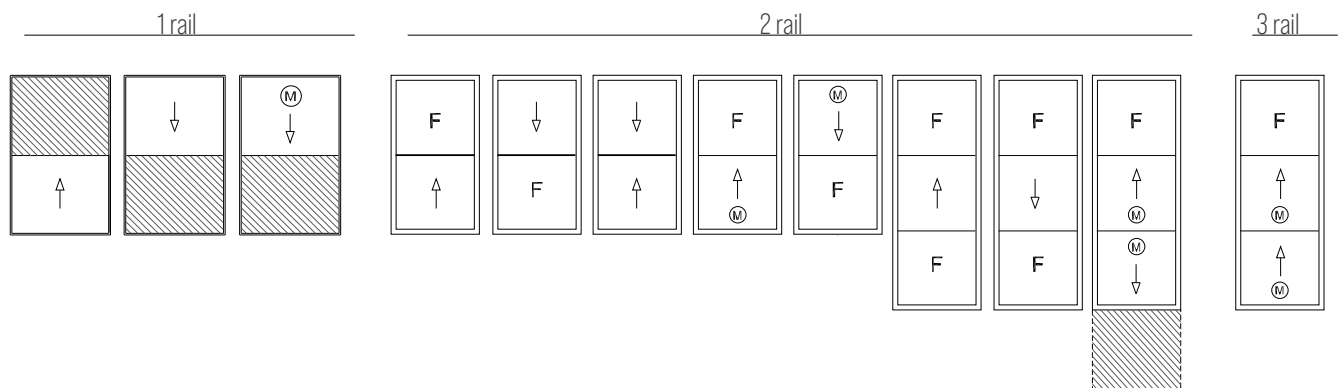
# OS-GUILLOTINE

minimalist sash system with thermal break

The Guillotine version of the minimalist system OS emerges as a mean to complement the existing solutions, allowing an equally bold opening solution. Ease of handling and lightness at the opening, turn this minimalist version into a different solution when it comes to large frames, enhancing visibility to the outside.



BAR & GRILL | PORTUGAL



## Features

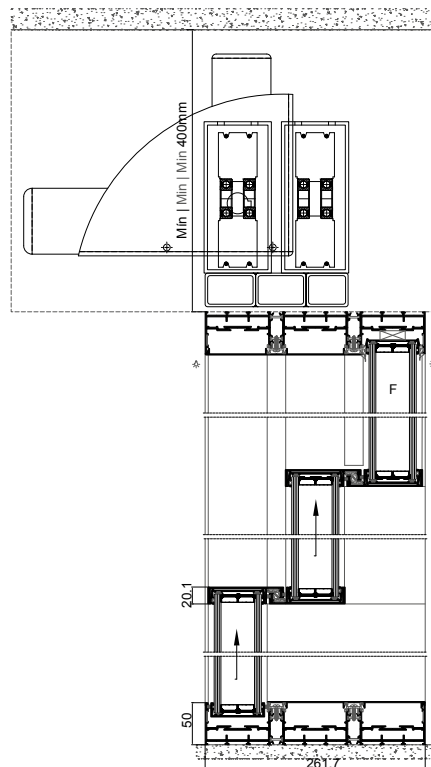
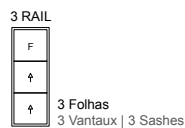
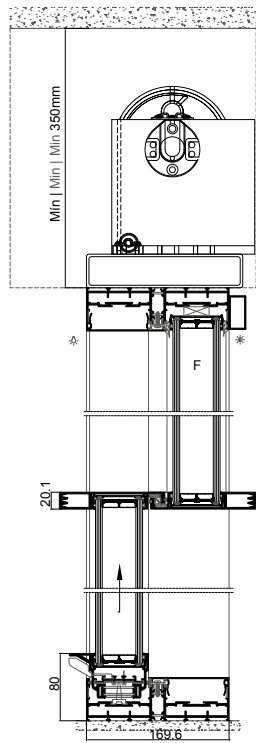
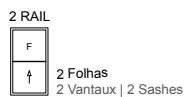
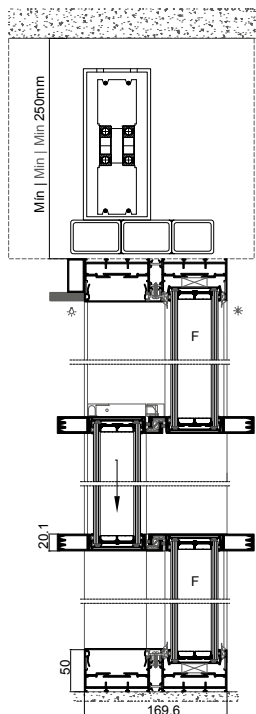
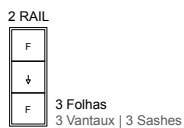
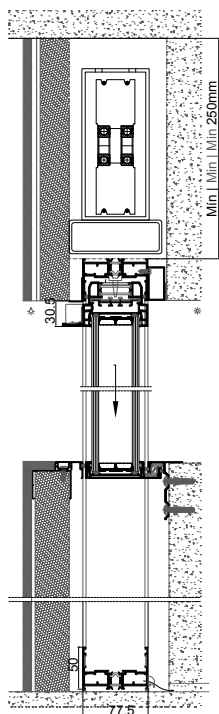
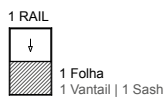
Openings: \_\_\_\_\_ Manual | Motorized

Maximum weight/sash: \_\_\_\_\_ Consult Technical Department

Filling (tempered glasses): \_\_\_\_\_ 56mm

Other typologies: \_\_\_\_\_ On demand









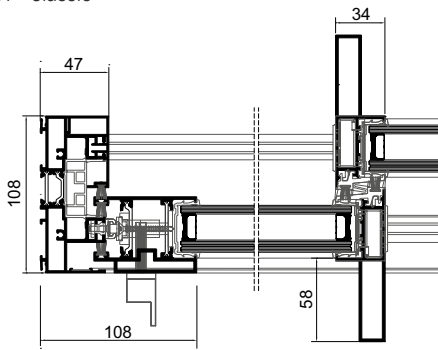
# SLIDING SYSTEMS

# JT sliding system with thermal break

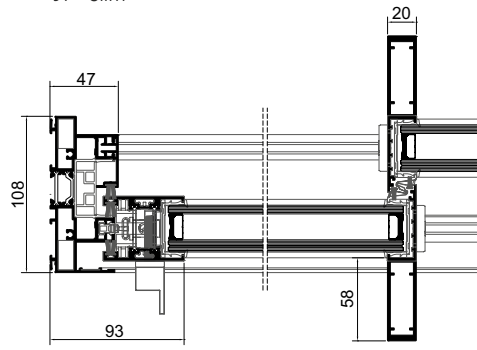
Versatile, robust and safe system which allows its application in larger frames, compatible with 2 to 6 sashes typologies, in 2 or 3 rails systems and corner solutions. Conceived in simple lines and smaller aluminum views, this system with thermal break aims to bring an answer to current architectural trends. Now we also have the **JT-Perimetral** System,

that makes it possible to complement the JT system with perimeter mobile frames, lifting hardware and the use of glazing beads. The use of these new mobile frames makes it possible to complement the JT system with sliding lifting typologies (which until now did not exist), making it more complete and versatile to satisfy the demands of today's market.

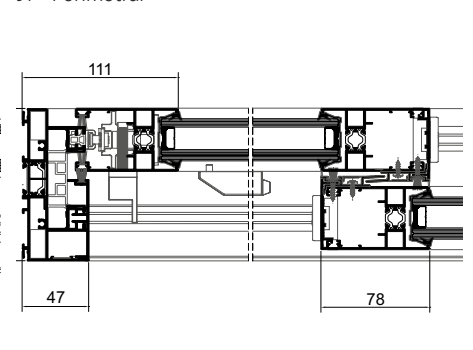
JT - Classic



JT - Slim



JT - Perimetral



## Features

Maximum area/sash:	JT: 4.50m <sup>2</sup>	JT-P: 5.00m <sup>2</sup>
Maximum weight/sash:	JT: 280Kg	JT-P: 280Kg (Multipont)/300Kg [ Lifting]
Maximum height/sash	JT: 3000mm	JT-P: 3000mm
Maximum width/sash:	JT: 2000mm	JT-P: 2800mm
Filling	JT: 28 to 34mm	JT-P: 24 to 35mm

## Test

Air Permeability:	4
Water Tightness:	7A
Wind Resistance:	+C3

## Thermal Values

U <sub>w</sub>	= JT - 1.44 W/m <sup>2</sup> K   JT-P: 1.61 W/m <sup>2</sup> K
U <sub>g</sub>	= 1.00 W/m <sup>2</sup> K - Double glazing

## Acoustic Insulation Test ACL 055/21 - ITeCons

R <sub>w</sub>	= 37dB [-1; -2]
R <sub>w</sub> (IGU)	= 47dB

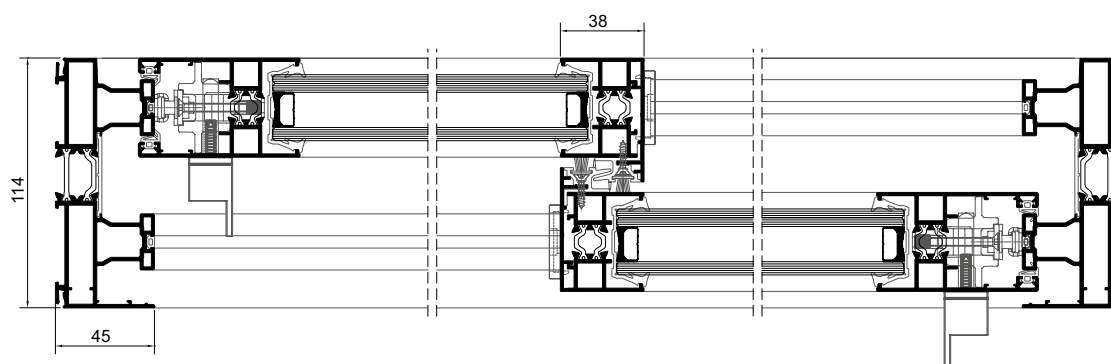




# JE straight perimetral system with thermal break



This system is the answer to a more daring architecture that does not obviate the volumetry to overcome large openings. It consists of a sliding system with improved thermal break (fixed frame: 24mm polyamide / mobile frame: 16mm polyamide), developed to allow its application not only in new construction as well as in building renovation.



## Features

Maximum area/sash:	5,00m <sup>2</sup>
Maximum weight/sash:	250Kg
Maximum height/sash	2800mm
Filling	from 24 to 35mm

## Test 01/12 - LNEC/LEC

Air Permeability:	4
Water Tightness:	6A
Wind Resistance:	B2

## Thermal Values

Test	CSTB DBV21-02531
U <sub>w</sub>	= 2.10 W/m <sup>2</sup> K (NF EN ISO 10077-1)
U <sub>g</sub>	= 1.00 W/m <sup>2</sup> K

## Test CSTB BV18-0164

Air Permeability:	3
Water Tightness:	6B
Wind Resistance:	C2







## OPENING SYSTEMS

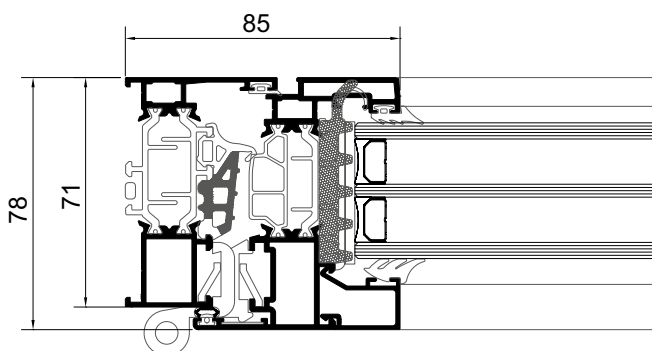


# ST 71mm opening system with thermal break

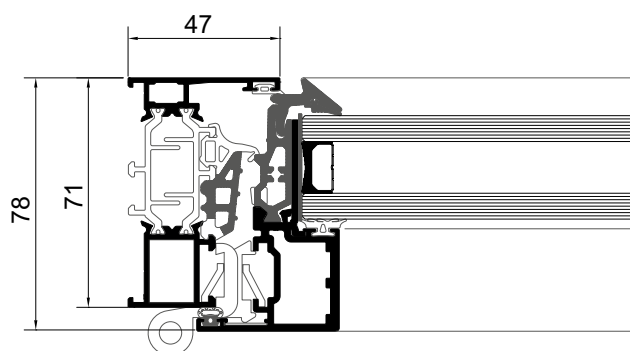
The ST system was designed to meet the needs of great comfort. The combination of this system of profiles thermally enhanced with selective double or triple glazing provides high performance of thermal and/or acoustic insulation, thereby answering to the increasing demands of sustainable construction.



ST - Classic



ST - Concealed



## Features

Maximum weight/sash: \_\_\_\_\_ from 70Kg to 180Kg (according to typology)

Filling: \_\_\_\_\_ from 18 to 54mm (ST) | 32mm (ST-Concealed)

### Test CLX 062 /15 - ITeCons

Air Permeability: \_\_\_\_\_ 4  
 WaterTightness: \_\_\_\_\_ E1350  
 Wind Resistance: \_\_\_\_\_ C5

### Thermal Values

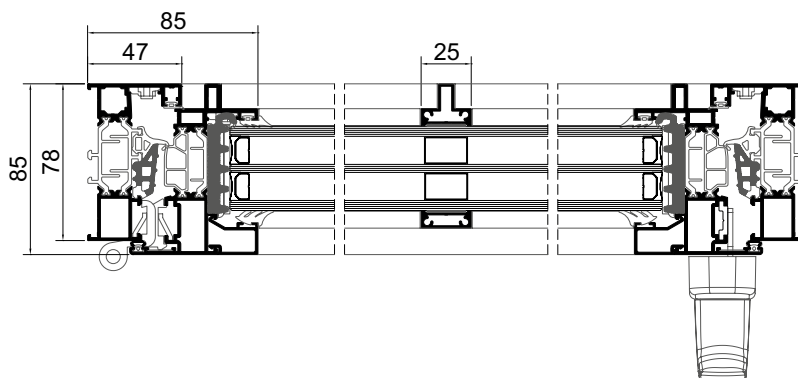
Test \_\_\_\_\_ UNE-ISO 13947:2005  
 $U_w$  \_\_\_\_\_ = 0,99 W/m<sup>2</sup>K  
 $U_g$  \_\_\_\_\_ = 0,50 W/m<sup>2</sup>K - Triple glazing  
 $U_w$  \_\_\_\_\_ = 1,38 W/m<sup>2</sup>K  
 $U_g$  \_\_\_\_\_ = 1,00 W/m<sup>2</sup>K - Double glazing

### Acoustic Insulation

Test \_\_\_\_\_ ACL 358/20 - ITeCons  
 $R_w$  \_\_\_\_\_ = 45dB (-1; -4)  
 $R_w$  (IGU) \_\_\_\_\_ = 49dB

# ST - STEEL 78 mm opening system with thermal break

The ST-Stell line joins the ST family, which aims to recreate with aluminium, the lines of the steel frames.



## Features

Maximum weight/sash: 130Kg a 180Kg (according to typology)

Filling: from 18 to 54mm



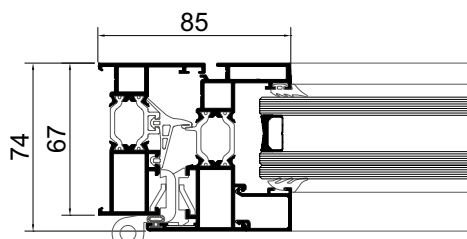


# LT 67mm opening system with thermal break

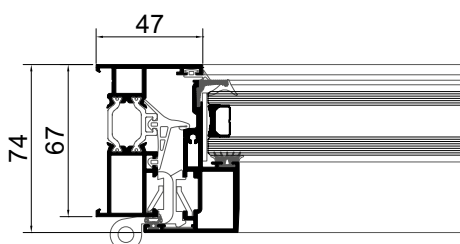


The LT system is designed to provide great comfort. The combination of this system with selective triple glazing offers high thermal and/or acoustic insulation.

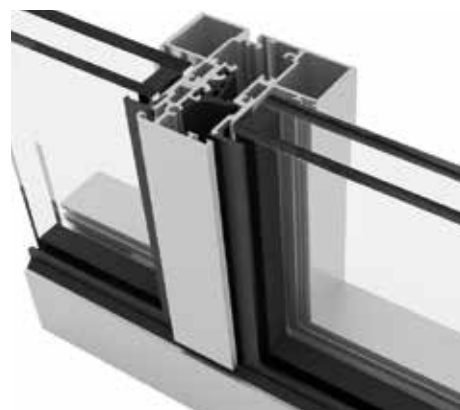
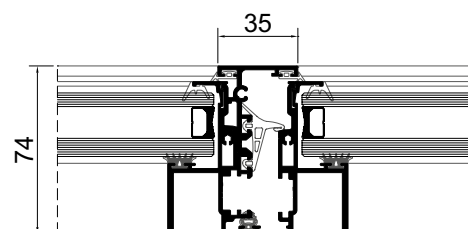
LT - CLASSIC



LT - CONCEALED



LT - LIGHTFRAME



## Features

Maximum area/sash:	2,60m <sup>2</sup> (for LT-Concealed)
Maximum weight/sash:	from 70Kg to 180Kg (according to typology)
Filling:	from 14 to 50mm (LT)   28mm (LT-Concealed)

## Test 34/08 - LNEC/LEC

Air Permeability:	4
WaterTightness:	E900
Wind Resistance:	C5

## Test CSTB DBV21-02515

Air Permeability:	4
WaterTightness:	7B   5A
Wind Resistance:	C2

## Thermal Values

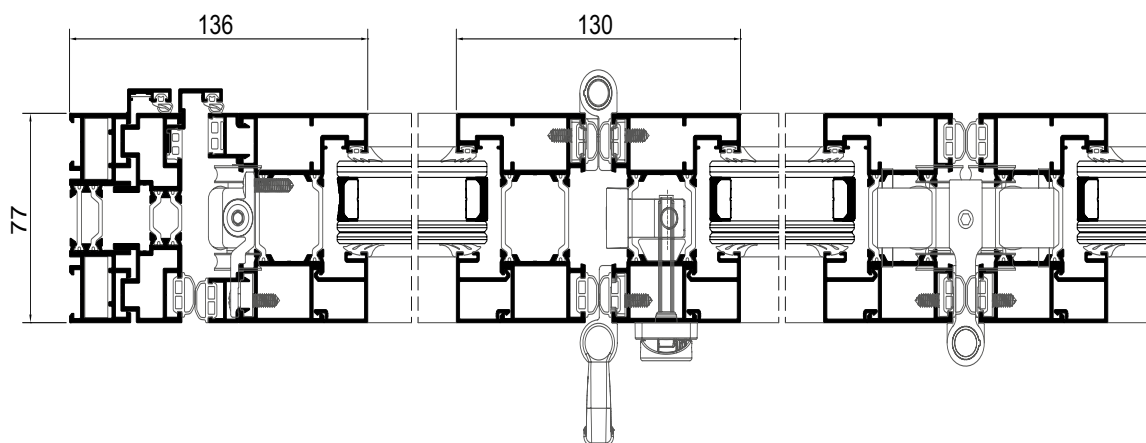
	Test CSTB DBV21-02531
U <sub>w</sub>	= 1,60 W/m <sup>2</sup> K (NF EN ISO 10077-1) - LT 85
U <sub>g</sub>	= 1,00 W/m <sup>2</sup> K - Double glazing
U <sub>w</sub>	= 1,30 W/m <sup>2</sup> K (NF EN ISO 10077-1) - LT 85
U <sub>g</sub>	= 0,60 W/m <sup>2</sup> K - Triple glazing
U <sub>w</sub>	= 1,70 W/m <sup>2</sup> K (NF EN ISO 10077-1) - LT 88
U <sub>g</sub>	= 1,00 W/m <sup>2</sup> K - Double glazing
U <sub>w</sub>	= 1,30 W/m <sup>2</sup> K (NF EN ISO 10077-1) - LT 88
U <sub>g</sub>	= 0,60 W/m <sup>2</sup> K - Triple glazing

## Acoustic Insulation

	Test ACL 194/19 - ITeCons
R <sub>w</sub>	= 40dB (-1; -5)
R <sub>w</sub> (IGU)	= 41dB

# HT folding system with thermal break

The HT folding system has great thermal capacity and a lot of potential for application in large spans, in which the main objective is to obtain the maximum free view when it is opened. Designed for typologies between 2 and 7 sashes, this system adapts perfectly to all types of architectural requirements presenting high strength and ease of handling.



## Features

Maximum weight/sash:	100Kg   120Kg
Filling:	from 14 to 50mm
Openings:	from 2 to 7 sashes

## Test CLX 015A/22 - ITeCons

Air Permeability:	4
Water Tightness:	7A
Wind Resistance	B1



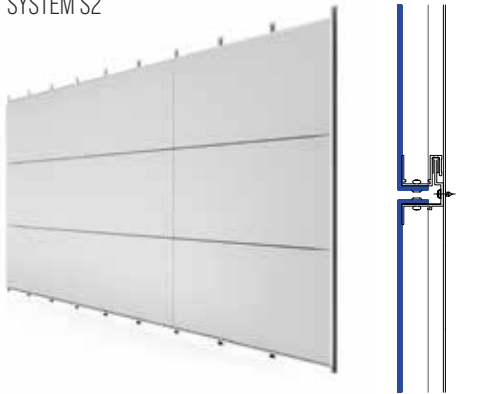


# COMPOSITE PANEL

aluminium composite panel

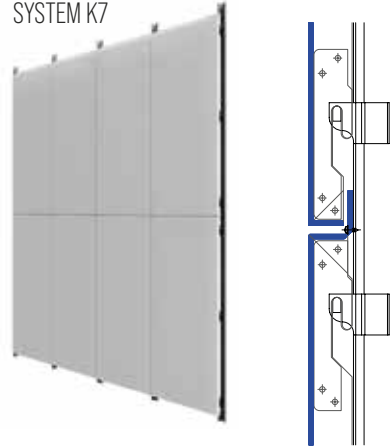
The Euro2000 panel, consisting of a core in thermoplastic resins (low density polyethylene) and aluminum foil from the inside and outside, has excellent mechanical properties, a high degree of acoustic insulation, high impact resistance, increased rigidity and weight reduction. Depending on the purpose of the application, the panel can be standard (PE), fire retardant (FR) or fireproof (A2).

SYSTEM S2



Specially designed for horizontally modulated facades, this male-female fastening system allows faster application, reducing assembly times.

SYSTEM K7

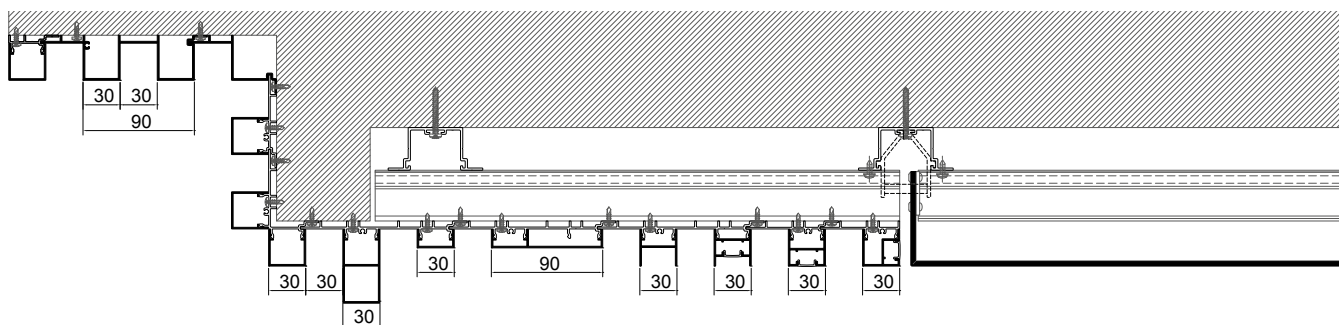


Concealed quick-fitting system, in which the modulation of the panel can be both horizontal as vertical.



# QS-REV decorative facade cladding

Versatile system for cladding facades, simple and quick to install. Depending on the cover profile to be applied and the finish chosen (lacquered or anodised), the final result features different looks, giving the façades a more traditional or a bolder design. This system was developed to allow the compatibility with the composite panel cladding, thus enabling an infinite number of solutions.



Covers applied with fixing profile



Direct fixing covers



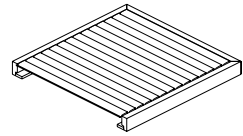
# OR-PERGOLA

bioclimatic pergola system with adjustable and retractable louvers

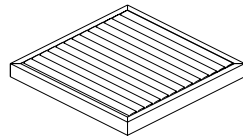
The OR system is a self-supporting aluminium pergola system, which allows the fitting of orientable and retractable motorized louvers. It was conceived in order to maximize the use of the open-air space, in line with the new trends of minimalist architecture. It features a straight lines design, with a combination of several typologies, sublime and elegant with the occultation of all setting devices. The pergola embeds a set of aluminium louvers which have a dual functionality: orientation in

order to create preferential shadow atmospheres and retractability in order to fully enjoy the benefits from the sun when it's colder outside. The full shutting of the blades gives shelter from the rain and their smooth leaning allows the orientation of the rainwater to an accelerate water movement to pre-conceived channels. With the optional integrated parallel systems, the system allows to manage the light, the wind and the temperature.

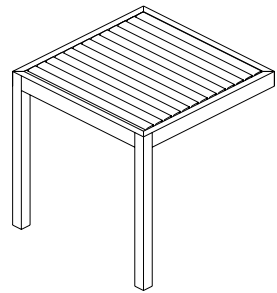
Frame between walls, without columns, U shape



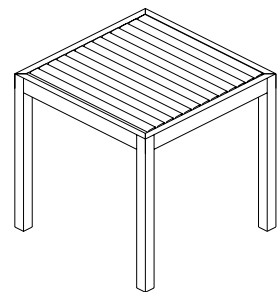
Frame between walls, without columns



Complete frame, two columns



Complete frame, four columns



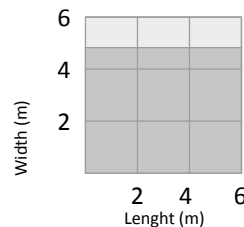
## Features

Column dimension: 200mm x 200mm

Column maximum height: 3000m

Blade dimensions 217mm x 30mm | 217mm x 50mm

Application range:



- Blade 50
- Blade 30

# QS-LP shading blades system

The QS-LP is an horizontal shading louvres system, designed with fixed mullions and rectangular section louvre. Due to its application in modules, it is a very versatile system that can be used in large spans. It is fixed to the wall using stainless steel parts and may include aluminium rods.



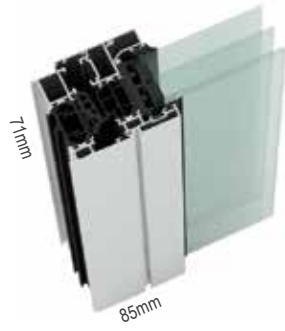


# ALL SYSTEMS

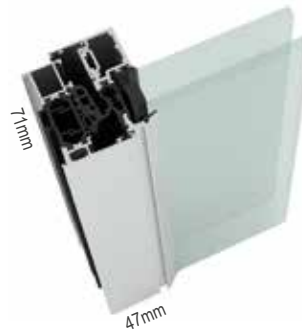


**Side-hung openings**

ST System



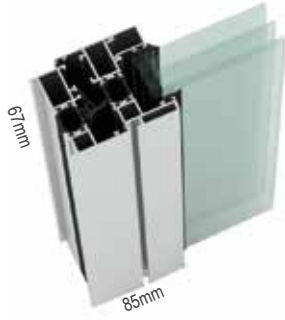
ST-Concealed System



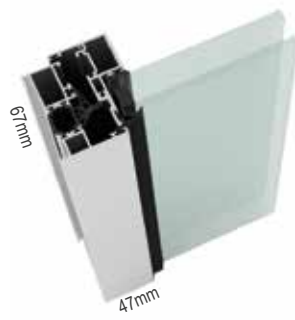
ST-Steel System



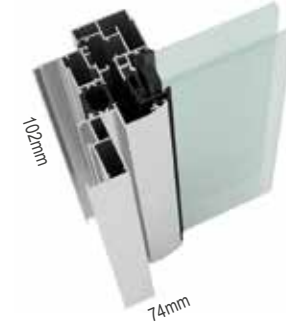
LT System



LT-Concealed System



OT System



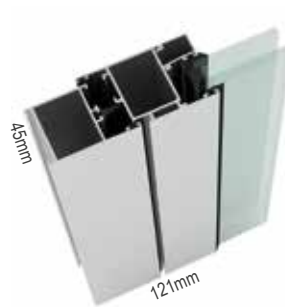
IT System



AT System



SA System



SB System

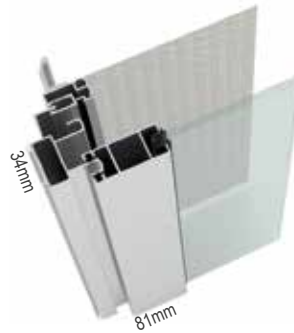


**Integrated systems**

TR-B System



TR-C System

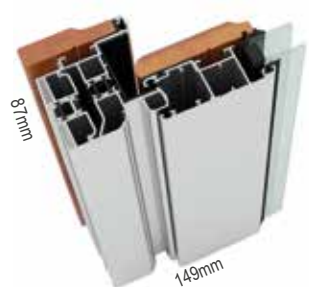


**Aluminium-wood systems**

AM-B(rt) System



AM-C System





**Sliding systems**

OS-S System



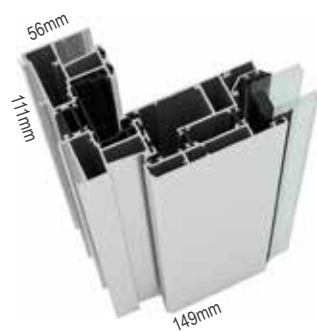
OS-D+ System



OS-T System



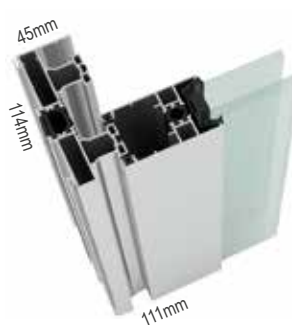
PE+ System



JT System



JE System



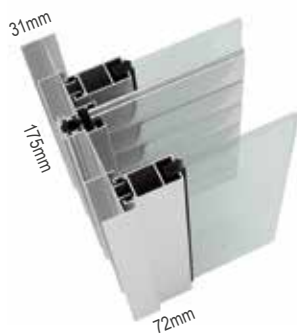
TL System



JF System



JM System



PL System



SP System

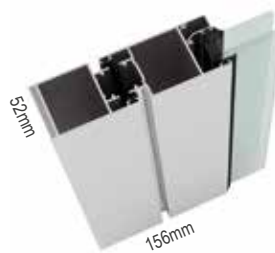


**Doors openings**

OS-P System

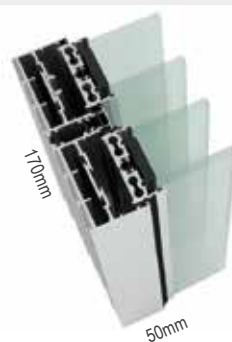


PS System



**Guillotine systems**

OS-G System



JG System



## Curtain wall and roof systems

FC System-Capped curtain wall



FC System-Horizontal capped curtain wall



System FC-VEB curtain wall



System FC-VEC wall



System FC-DEC



FA System - Suspended curtain wall



FA-Cladding System



V System - Covering



## Shading systems

QS-LP System - Shading louvres



QS System - Sun shade louvers



QS-Coating louvers System

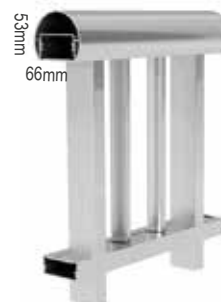


## Railing systems

AV System - Glass railing



NC System - Railing and handrail



NG System - Railing and handrail

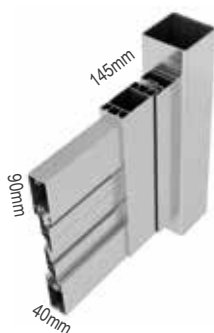


## Gates and shutter systems

PA+ - System Sliding gates



PA System - Side-hung gates



HT System - Folding shutters



PB System - Side-hung shutters



PC System - Sliding shutters



PC-L 1Rail System - Sliding shutters

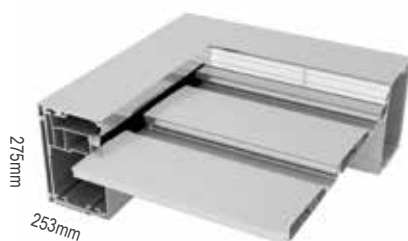


PC-L 2Rail System - Sliding shutters

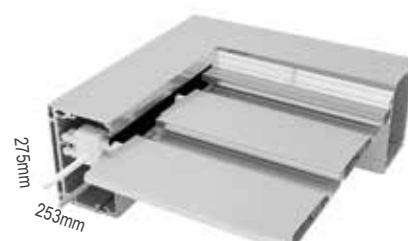


## Complementary systems

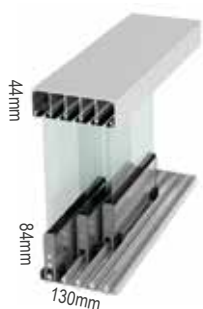
OR System - Adjustable pergola



OR System - Retractable pergola



OR-PV System - Sliding glass doors



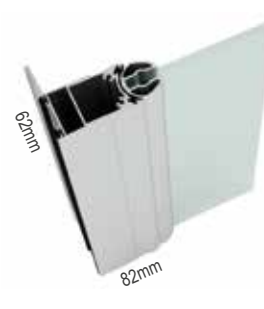
DM System - Partitions



RD System - Skirting board



RB System - Shower enclosure



# GLASS

glass processing

## Products

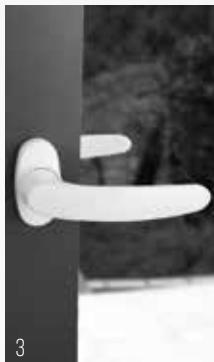
Double glazing	Double glazed with inner blinds	Triple glazing
Insulated glass with gas	Enhanced thermal insulation	Acoustic glazing
Laminated PVB	Laminated SentryGlas®	Laminated PVB glass with digital painting
Laminated EVA glass	Acoustic laminated glass	Multi laminated glass
Safety glass	Intruder resistant glass	Bullet resistant glass



Tempered glass	HST glass	Heat strengthened glass
Tempering	HST	Lamination
Frosted glass	Decoration by recording	Serigraphy
Opacifying glass	Mechanization: Drilling   Cut   Edges   Bevel   Rincon	



# HANDLES & CREMONES



## Doors

- 1\_Minimalist door handle Cubic
- 2\_Double door handle Cubic
- 3\_Double door handle 615



## Side-hung openings

- 4\_Minimalist handle Cubic
- 5\_Handle with spindle Cubic
- 6\_Cremone Cubic
- 7\_Flush-mounted Light Frame



## Sliding openings

- 8\_Lateral latch OS N.4
- 9\_Central latch OS N.5
- 10\_Handle Slim XS
- 11\_Minimalist cremone multipoint Novem
- 12\_Flush-mounted latch R251IX
- 13\_Flush-mounted latch 180°
- 14\_Flush-mounted handle Slim
- 15\_Lift-and-slide cremone S/PE





#### ALFA SUL

📍 EN Lisboa-Sintra Km 14  
2725-397 Mem Martins

☎ (+351) 219 265 090\*

☎ (+351) 219 265 098\*

✉ alfa.sul@sosoares.pt

#### ALULIDER

📍 Pav. Industrial H - Plataforma 13D  
Zona Franca Industrial  
9200-047 Caniçal - Madeira

☎ (+351) 291 960 488\*

☎ (+351) 291 960 497\*

✉ alulider@sosoares.pt

#### PORTALEX - EXTRUSAL

📍 Estrada de S. Marcos, 23  
2735-521 Cacém

☎ (+351) 210 412 500\*

☎ (+351) 210 412 507\*

✉ comercial@portalex.eu

#### SOSOARES

📍 Travessa do Bolegão, 146  
3750-482 Fermentelos

☎ (+351) 234 729 740\*

☎ (+351) 234 729 746\*

✉ comercial@sosoares.pt

\* Chamada para a rede fixa nacional Portuguesa | Appels vers le réseau fixe Portugais | Portuguese fixed network call

[www.sosoares.pt](http://www.sosoares.pt)