

INSPIRATION

THE STYLISH WORKPLACE

HOW SHAPES AND COLOUR
**AFFECT THE WAY
WE FEEL AT WORK**

GÖTESSONS



”

Most of the textiles in our range meet the requirements for the Nordic Ecolabel and Möbelfakta.

Bring life to your work environment with textiles in lively colors

In 2010, the first table screen was sold at Götessons. An important milestone in our history as it was the first textile product in the range. The product received a positive reception from customers, perhaps thanks to the possibility to choose from several different textiles and colors. The interest in decorating our workplaces and making them more homely has increased year after year. And it's for sure that with the help of colors, structures and different expressions, we can create harmonious and welcoming environments that make employees feel inspired and productive.

The development of textile products continued at Götessons and just one year later, the first textile seating was launched; the SMS box (Sit-meet-store). Today, 13 years later, the amount of textile products have increased more and more. Among other things, our popular OfficeBallz was launched in 2015. From being able to offer about 8 textiles in different colors, there are now over 20 textile families to choose from, and then we only mention our standard range. Except screens and soft seating, our sound absorbents in EcoSUND can also be dressed with textiles in lively colors.

There is a lot to think about when choosing textile, it is not just about what your eyes first see, i.e. the colour. It is also important to have the external environment in mind, in which degree of wear and tear it will be exposed to. Of course, I want to encourage everyone to choose the most environmentally friendly alternatives, and therefore I am happy to say that most of the textiles in our range meet the requirements for the Nordic Ecolabel and Möbelfakta. With our long experience in the industry, we are well aware that not all projects have the same budget and we have therefore worked hard to ensure that we cover all price ranges while the textiles maintain the same good quality.

In this magazine with the theme "The stylish workplace", you will learn everything about our different textiles and how to color the office in the best way. Hope you'll enjoy it!

Sally Sventorp, product developer and textile manager, Götessons

CONTENT



4

Scribble

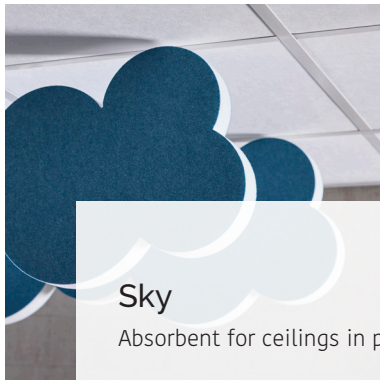
Stylish whiteboard in new sizes.



6

RomboWork

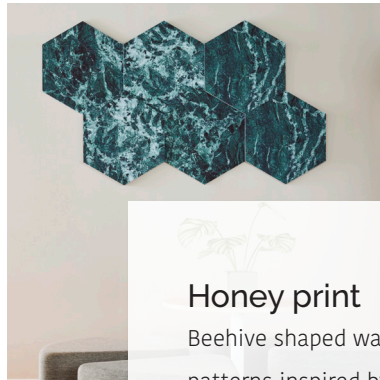
Workstation as a third element to the Rombo series.



12

Sky

Absorbent for ceilings in playful shapes.



30

Honey print

Beehive shaped wall absorbent with patterns inspired by nature.

9

Partykungen

Colorful and playful at Partykungen.

14

Get to know our materials

Explore the different materials our products are made off.

18

Motala library

A creative meeting place with focus on reading.

28

Textiles

Choose textile based on where it should be used and price range in the project.

37

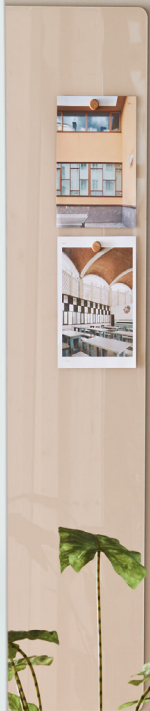
The impact of colours

Colours affect us in many different ways. How should we think when we work with interior design.

42

Five tips for a pleasant work environment

We give you five tips for a pleasant day at work.



NEW SIZE!



SCRIBBLE FLOOR SCREEN

Scribble is a stylish and practical writing board with a hidden attachment on a ScreenIT A40 Floor screen on wheels. Write on the glass or attach paper with magnets. Rotate the screen and attach papers on the back with pins. Also available as a screen mounted on the wall.

SCRIBBLE WRITING BOARD

Attach the stylish and practical writing board on the wall and use for all kind of meetings and information. The board's front is made of hardened tempered glass with a plate of sheet metal on the back, making it possible to both write on the glass and attach papers with magnets.

ROMBOWORK

With RomboWork you get another function to the smart and useful Rombo serie of seating furniture and pot. An easily accessible workspace that can be moved around. Place in groups of three with their backs to each other. Design by o4i Design Studio.



ROMBOSEAT TABLE - NOW ROTATABLE!

The table, which is an option for our RomboSeat, can now be turned at an angle of approx. 50°.







Colorful and playful at Partykungen

Creating a good sound environment in the office was an important part of the project. Considering the acoustics, they chose to use the highly effective Nivå wall absorber. Nivå consists of EcoSUND® and has its own expression, thanks to its distinctive design with varying thickness. Around the workstations they used ScreenIT A30 table screens, to get a more shielded space and a better sound level.

In the conference table the Bi-Box was mounted, which is perfect for hiding cables. Not only do you get cables down in the cable holder under the table, but you also get good access to electricity at conferences and meetings. In the conference room, the practical writing board and the Sketch floor screen were placed, in colors that fit perfectly into the office's playful environment.

When the renovation project now is complete, they landed in an inspiring and fun work environment with well-thought-out products that promote the health and well-being of the employees.

PENDULA

Hanging from the ceiling, Pendula becomes an effective room divider that improves the acoustics in the room while also being a stylish interior detail. In addition to the Square model with straight edges, there are the Wave, Cloud and Pixel models that add even more playfulness to the room. Design by o4i Design Studio.



PENDULA PIXEL



PENDULA SQUARE



PENDULA WAVE

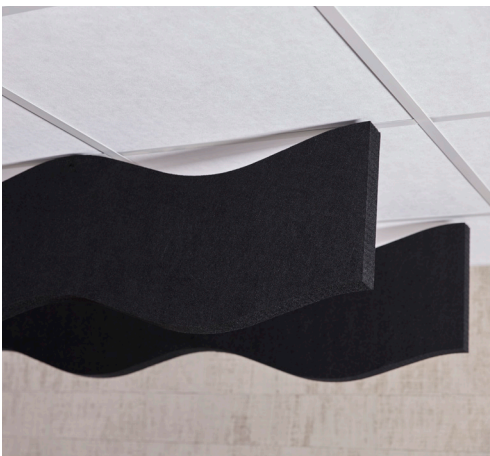


PENDULA CLOUD



SKY

Sky is a ceiling-hung absorbent in 50 mm EcoSUND for very good sound absorption. Install in an open office landscape to effectively improve the acoustics and create a cozy feeling. Available in several inspiring shapes that open up for creative environments. Design by o4i Design Studio.



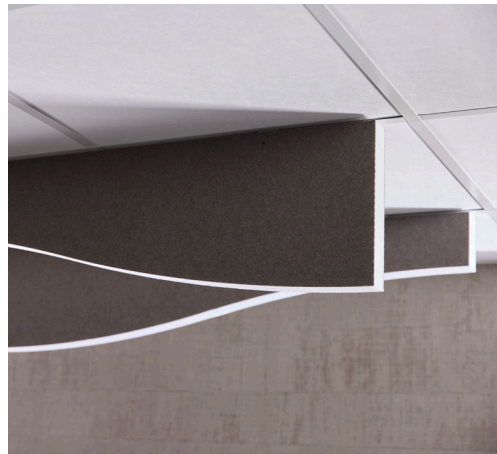
SKY WAVE



SKY CLOUD



SKY SHORELINE



SKY DUNE



ECOSUND®

EcoSUND® is our unique core material for sound absorbent. It's good for both the work environment and our nature. EcoSUND is made of 50 % recycled PET and 50 % new PET fibres. The fibres EcoSUND is made of is approved according to Oeko-Tex® Standard 100.

TEXTILES

At Götesson we are highly dedicated to quality, aesthetics and function when it comes to textiles. One of our goal is to offer a varied and wide range of high-performance upholstery and panel textiles that suits every style and space. Read more about our textiles at page 28.

LAMINATE

For products where laminate is present, there are currently the colors black, white, oak, walnut and ash to choose from. You find laminate on our tables, The Hut GEM and the Moving-wall series etc.

METALL

Several of the accessories in our range consist of lacquered metal, such as pen stands, A4 shelves and pots. These are available in the stylish muted colors blue, green, matte white and matte black.



Get to know our different material

Something that Götessons' customers appreciate is the opportunity to combine textiles and materials based on their own wishes/needs. But of course it can lead to decision anxiety when there are so many different options to choose from. Our tip is not to reinvent the wheel, but find inspiration from other projects and then merge to your environment and the conditions that exist. On gotessons.com there are several reference cases to look at as well as a number of environmental images under the products. Our salespeople have extensive experience and are happy to help with tips and ideas. Not all colors are included in the standard range, but never be afraid to ask about special colors, as we do everything we can to help develop customer-unique solutions.

Reuse and sustainability

We can't talk about materials without raising the issue of sustainable design, materials and product development. In our product development process, we have set requirements for social and environmental sustainability, i.a. long service life, no hazardous materials and that the product must be reusable. On the next page you can read more about our LOOP concept as well as the Swan and Möbelfakta. The requirements placed on products labeled "A better product choice" are outlined below.

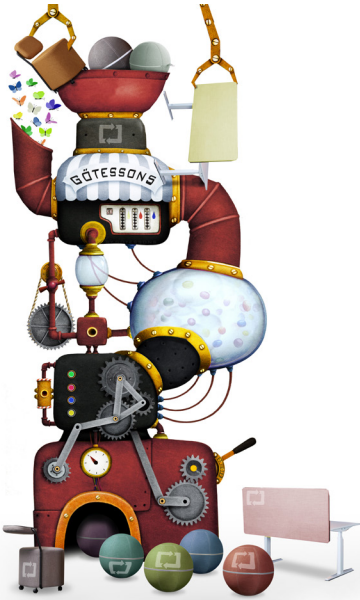
- Long service life
- Smart design: few components and easy to disassemble and recycle
- Recycled material as a constituent component
- Possible to LOOP
- Ecolabelling
- Consists of environmentally friendly materials
- No hazardous materials or substances
- Närproducerad och/eller kontrollerad leverantörskedja.

ZIPPER AND SEAMS

The textile products can either be obtained with fixed seams or zippers. Choose from plain and herringbone zippers and stitching to match.

WRITING BOARDS

The board's front is made of hardened tempered glass with a plate of sheet metal on the back, making it possible to both write on the glass and attach papers with magnets. Available in eight different colours.



Loop, Möbelfakta and Nordic Swan

GöteSSons have products declared with the product certifications Möbelfakta (since 2021) and the Nordic Swan Ecolabel (since 2013). For us, it is an important verification that we as a company are working with sustainability at all levels: internally, in the supply chain and in our product development. As a company, we are regularly reviewed and audited by third parties. This means a certainty for customers and interior architects, while at the same time making it easier to make sustainable choices.

LOOP BY GÖTESSONS

Reuse the whole office – over and over again. That’s the idea of LOOP. We want all projects to begin by evaluating how much of the current furnishings can be reused. Send us your desk screen or seating furniture to have it serviced, reupholstered and returned as new. Most of the time, it’s just that the fabric that needs to be renewed after years of usage, but the frame itself has an even longer life cycle.



THE NORDIC SWAN

The Nordic Swan Ecolabel imposes extensive requirements on the constituent materials and chemicals used in the manufacturing of furniture, but also requirements for the usage phase and other circular aspects such as quality, guarantees and material recycling. The Nordic Swan Ecolabel is a so called type1-marking and follows official standards, is independent, sets requirements for the product’s entire life cycle, and gradually tightens the requirements over time. The Nordic Swan Ecolabel is owned by the state-owned company Ecolabelling Sweden and was founded by the Nordic Council of Ministers.



MÖBELFAKTA

Möbelfakta puts high demands on the requirement areas quality, environment and social responsibility at the same time, something that is unique to many certifications. Each declaring company is regularly audited by an external third-party auditor, who also approves declared furniture. A product declaration is valid for five years and must then be renewed. Möbelfakta is a non-profit organization owned by IVL Swedish Environmental Research Institute and The Swedish Federation of Wood and Furniture Industry (TMF).





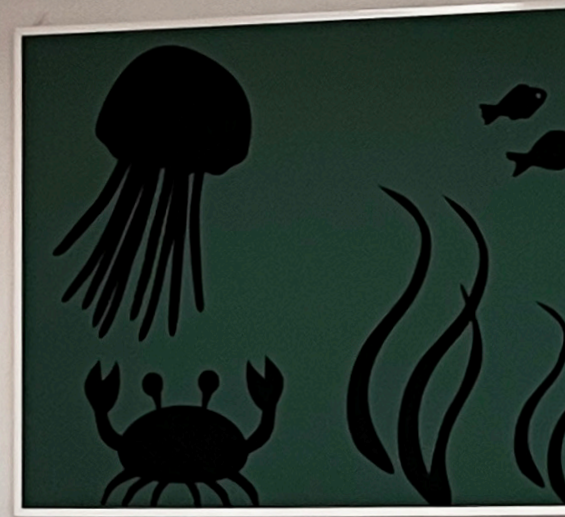


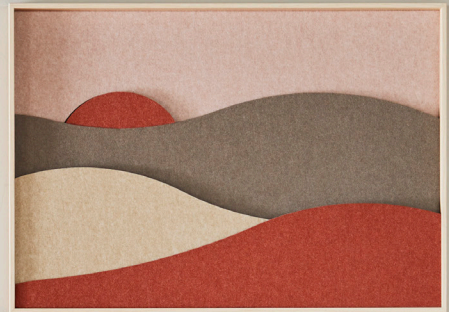
A creative meeting area with focus on reading and learning

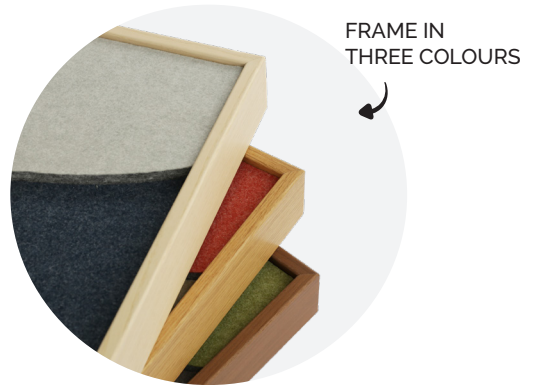
A couple of years ago, Motala library went through an extensive renovation that not only renewed its physical appearance, but also improved the user experience and modernized the premises. The project was a result of a long-term plan to update and adapt the library to the changing needs of the community and library visitors.

The new design promoted openness and light through large windows, modern furniture and flexible spaces that could be adapted to different needs. During the renovation process, efforts were also made to include different features to attract different audiences. An area for children and young people was created, with playful furniture and colorful shelves that attracted reading and learning. To promote creativity and collaboration, special meeting rooms and workspaces for students and other groups were also set up.

In each room, the interior design and acoustics became an important element, why absorbers from Götessons were set up here and there. For example you find 'ECOsund ceiling tiles raw' in the reception, 'Print with a frame' in the cozy room and 'Sound off Cloud' over the books in the large sarea. In public places like Motala library, it is extra fun to invest in colourful environments as it simply makes us people happy and inspired. Read more about how colours affect us on page 36.







LANDSCAPE

Apply this beautiful creation to the wall, which consists of our sound-absorbing material EcoSUND in different colors, shapes and levels. The motif that comes in three colours is surrounded by a frame in wood veneer oak, ash or walnut.



G Ö T
D E S
G R O

Human Design. Human Growth.



Götessons Design Group

Götessons Design Group encompasses brands whose success is based on understanding people's needs before they do. Together we create furniture, environments and products that combine beauty, good ergonomics and sustainability. We want you to thrive and grow. In both public and private settings. Today and tomorrow.







DIVIDO

Room divider Divido Birch/Tree in molded felt creates life and screens open spaces. Consists of two panels that together form a neat pattern.



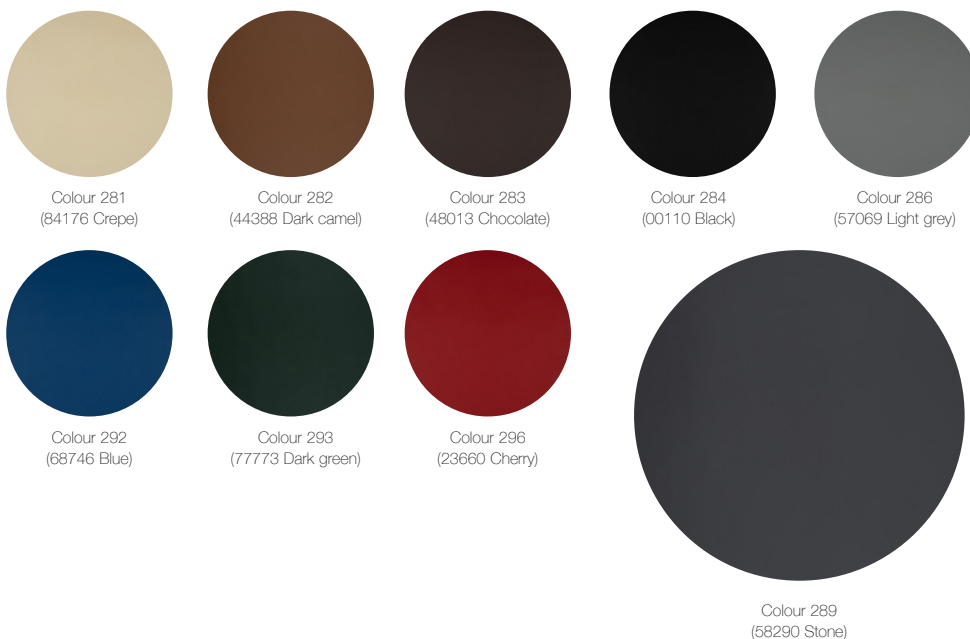
TIPS

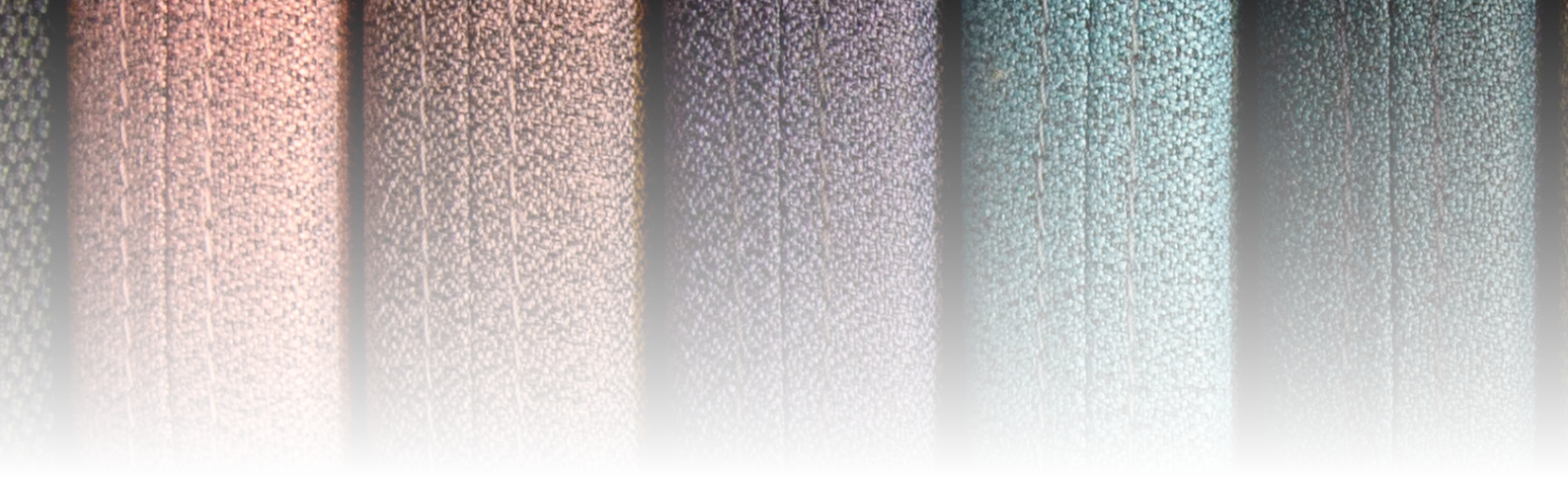
ScreenIT Health & Care is a floor screen on wheels or feet designed for the health care sector and is available in one size. Built with a wood frame, filled with 30 mm soft core material and dressed in vinyl, which is easy to disinfect and wipe clean with alcohol based cleaner. The screen's long sides are both equipped with press studs to enable connecting as many screens as you want. Usable in spaces such as: waiting rooms, corridors, schools, lunch rooms and the health and care sectors in general.



ILLUSION - ARTIFICIAL LEATHER

Illusion is a PU (Polyurethane) artificial leather that can be used in a number of different areas. Artificial leather can be advantageously used in healthcare environments and other environments where high demands are placed on cleaning. The leather can be wiped with an alcohol-based cleaning agent.





Textiles

In our standard range you can find high quality wool fabrics that gives you superior comfort and exceptional durability. Polyester fabrics, widely used and appreciated by many for it's extremely versatile, durable characteristics and though enough to withstand the most demanding contract use. Great eco-friendly alternatives such as recycled polyester which offers the same aesthetics and performance as virgin polyester but has a smaller impact on the environment. You can also find artificial leather, contemporary fabrics with playful patterns, fabrics that can be disinfected and flame retardant fabrics for spaces with high safety demands.



Textiles with this symbol can be used on all our products except soft seating.



Textiles with this symbol can also be used on soft seating.

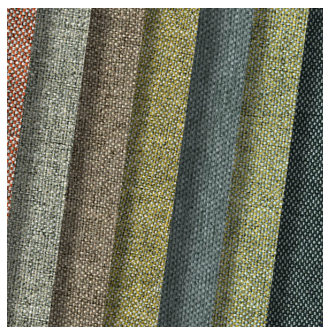
Exempel

PRICE RANGE 1



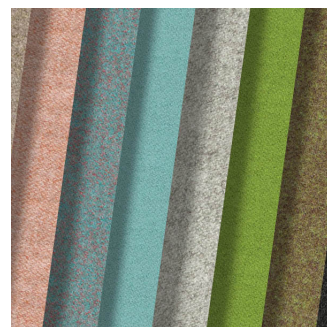
Mica from Gabriel

PRICE RANGE 2



Rivet from Camira

PRICE RANGE 3



Synergy from Camira



Quality and environment

Each room has different requirements for the fabrics and this is something you should keep in mind when choosing your favorites. Below is a guide to help you make the right choice, a description of the most common used test methods and what the result can tell you about the fabric.



Martindale

Martindale is one of the most common used method in Europe to test a fabrics abrasion resistance. The method simulates the natural wear and tear of a fabric, the higher value the more resistance to abrasion. We recommend a value of at least 40.000 for contract use.

Pilling

Pilling is a phenomenon that occurs during use and is caused by abrasion on the fabrics surface. Fabric have different tendency to form pills and by testing the pilling resistance you get an insight into how easily pills and fuzzing are formed on the material. The result is measured against a scale of 1-5, five representing no pilling.

Flammability

The purpose of flammability test is to give the user an insight into the fire performance of a fabrics. There is no single internationally flammability standard for upholstery fabrics, instead there are many different flammability standards and methods for different parts of the world.

Lightfastness

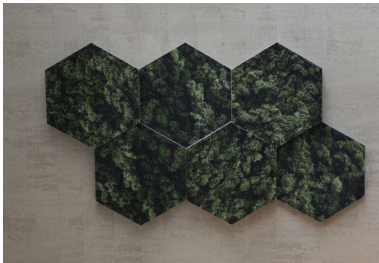
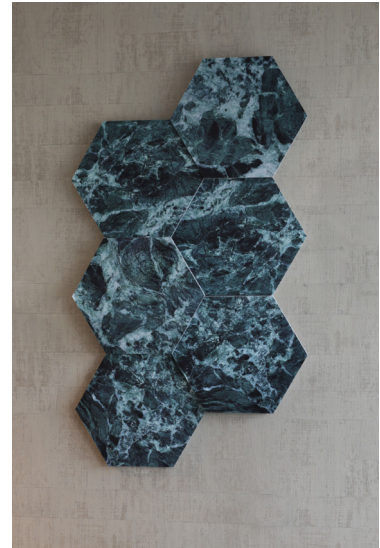
Describes a fabrics ability to retain its colour and withstand fading when exposed to daylight, UV-light. The textile is judged on an 8-graded scale where 8 is the best result. By choosing a fabric with a lightfastness value of at least 5, the risk of visible changes is significantly reduced, 5 is the lowest accepted value among our fabrics.

Fastness to rubbing

Evaluates the degree of colour transfer from the fabric surface to another surface. The result is determined through rubbing in a wet and dry state. The evaluation is graded in 5 levels, a larger value means better resistance..

Environment

We always try to find the best qualities and most eco-friendly alternatives. The majority of our fabrics have a Oeko-Tex lable and some fabrics also have Eu Ecolable and Nordic Swan lable.



HONEY PRINT

Honey print is a playful wall absorbent with beehive-shaped panels in three different thicknesses that together create an effective 3D feeling in the room. Honey print is available in several stylish patterns inspired by nature.





”

A big advantage among Götesson's textile products is the possibility to apply the same fabric to both screens, seating, ceilings and wall absorbents.



Inside the head of Götesson's interior designer

From visitors who come to Götesson's showroom and head office in Ulricehamn, you often hear appreciated compliments and praise about how beautiful it is. For several years, the property has been nominated for Sweden's prettiest office, something that the employees are very proud of. Since 2016, our marketing director Jessica Carlstein is the one who has been mainly responsible for decorating the office, fairs and other showrooms around Sweden and Europe. The latest project at Götesson's own office was a switch between two departments. Another fun project recently was decorating the new showroom in Paris. Jessica says that there is a long checklist to go through with each project, but most things are now routine.

- It is important that the room is colour-coordinated, preferably with a base of neutral colours. I usually add one or more accent colors that can be found in several of the textile products. Choosing and combining textiles is a fun job and with the help of our product development team, we make sure to follow the current trends, says Jessica.

A big advantage among Götesson's textile products is the possibility to apply the same fabric to both screens, seating, ceilings and wall absorbents. This makes it easy to coordinate colours in the entire room from floor to ceiling. And speaking of ceilings, don't miss using this surface to add sound absorbents. In fact, the ceiling is said to be the best surface for sound absorption.

Interior design and trends come and go, which is a challenge from a sustainability perspective when it comes to fairs and events. When these are planned and furnished, as a rule, products are chosen with non-trend-sensitive colors and materials. The goal is to have products that could last over time and can be combined with other products.

- If products do not end up in one of our own showrooms or with retailers, we would like to see them find a home with sports associations who often are in need of cozy places to hang out, says Jessica. It is absolutely forbidden for a product to stand and collect dust outside the warehouse, she concludes.

OFF THE GRID

Hang from ceiling or mount on wall

A product with the possibility of combining sound absorbents, plant garlands and in some cases also lighting, is Off the Grid. The wire mesh, which is either suspended from the ceiling with a wire or mounted on the wall, becomes an eye-catching interior detail that is just as suitable in a restaurant as over a reception counter. The rectangular shape that has existed since before has now been joined by a circle shaped frame.





	<p>Green is associated with nature and can therefore have a calming and harmonious effect. It can create a sense of freshness, balance, and growth. Green can be particularly beneficial in spaces where relaxation and rejuvenation are important.</p>
<h1>Green</h1>	



	<p>Yellow is a cheerful and energizing color. It can evoke feelings of optimism and happiness. Bold shades of yellow can be lively and invigorating, while softer hues can feel gentler and cozy.</p>
<h1>Yellow</h1>	



	<p>Blue is often associated with calmness, serenity, and harmony. It can create a relaxed and peaceful atmosphere. Dark blue can convey a sense of elegance and formality, while light blue can feel refreshing and bright.</p>
<h1>Blue</h1>	



The power of colours

Colours influence the ambiance of a room in various ways. Blue creates calmness, while red instills energy and passion. Green provides a sense of harmony, while yellow brings joy and optimism. Orange is inviting, and purple is associated with creativity. It's important to remember that the impact of colors can be individual, and combining colors can create different moods. It's also important to consider the brightness and saturation of the colors. Bright and vibrant colors tend to evoke a sense of expansion and openness, while darker and more muted colors can create a cozier and more intimate atmosphere. In a workplace, it's important to keep the influence of colors in mind and deliberately choose hues for different rooms based on the wanted atmosphere. A relaxation area might be colored in green, while a creative meeting room could be in red or yellow.





SCRIBBLE GEM

Attach the stylish and practical whiteboard with hidden suspension to your Hut GEM and use it as an information surface or for flexible standing meetings. Possible to both write on the glass and attach paper with magnets.

WOODLIGHT

Woodlight is a led list in white-glazed ash that is mounted in the roof ridge of The Hut and Half a Hut. A new detail that has been added is a small sticker that is placed on the cable channel above the dimmer to always keep track of where it is.



MAGAZINE +

Wall shelf for The Hut GEM and Half a Hut GEM with room for magazines. Perfect for easy reading during your lunch or coffee break.









NEWS!
Colour grey
on our frames.



White



Black



Grey

Add colour to the walls with absorbent print

A creative and simple way to add color to a room is by place absorbent prints on the walls. Transform your workplace into a unique space with customized designs or browse through our extensive image library. Whether you prefer stunning natural landscapes, inspirational quotes, abstract patterns, or portraits of your favorite personalities, there's a wide range of images to choose from. The prints are available with frames in black, white, or grey, with hidden frames or straight-cut edges. Choose from our standard sizes or order custom sizes to fit your preferences. For extra-large spaces, large prints up to 3x50 meters are suitable.

The prints are made in in our core material EcoSUND, helping to reduce echoes and dampen unwanted noise. By combining artistic beauty with sound absorption, the print provide you with the opportunity to create an atmosphere that is not only visually pleasing but also comfortable to be in.

5 tips for a pleasant work environment

Work environment can be divided into three areas: the physical work environment such as noise, chemicals and working postures; the psychological work environment with tasks, leadership and stress; as well as the social work environment that deals with personal development and the interaction between colleagues. All factors are important for the working day to be as good as possible.

Here are 5 tips on how to create a pleasant work environment:

1 Talk about it

Normalize talking about the work environment with employees. Include it in the agenda in several forums: weekly meetings, management meetings, development talks. Talk about how the workplace is perceived, both the physical premises, IT equipment and the organization of the work. The results are used in the follow-up and evaluation of the organization's work environment.

2 The balance between work and leisure

Work-life balance is becoming an increasingly important factor for many employees. It simply means that the private part of everyday life becomes more compatible with work, and is about organization, routines and working hours. Try to make the organization adaptable as much as possible to, for example, daycare drop-off and opportunities for leisure activities, and remove cultures of working late at night and cultures that emphasize overtime work.

3 Say hello to your colleagues!

Employees are each other's work environment. A pleasant workplace where employees have good relationships is incredibly important for how you feel. A culture where you greet, smile and chat openly is therefore of the utmost importance.

4 Include everyone and discriminate no one

We include when we take advantage of each other's differences and involve each other, and all this is easier if the company has a culture based on openness, both physically and socially. Strive to have a workplace with equal gender distribution, ethnic diversity, and educational and skill variations. Directly linked to this is the opposite: differential treatment. Bullying and abusive discrimination are serious problems. Make sure you have a culture that doesn't allow either tough jargon or insulting actions.

5 Arrange activities or employees

Having different social activities in the workplace, both inside and outside working hours, is a good way to increase cohesion among employees and in different teams. It is nice to get to know each other more than just for the profession. It doesn't always have to be conference trips, but an unpretentious AW, Friday coffee, lunch training or a barbecue after work. When you get to know your colleagues better, you will also work better together.





Scan to visit Götessons e-commerce

GÖTESSONS

Rönnåsgatan 5B, Box 56, S-523 38 Ulricehamn, Sweden, info@gotessons.se, +46 321 68 77 00