

The Velux logo is a red rectangle with the word "VELUX" in white, bold, sans-serif capital letters. A registered trademark symbol (®) is located at the top right of the word.

# A BIG FAMILY UNDER ONE ROOF

Single Family House in Buxtehude, Germany





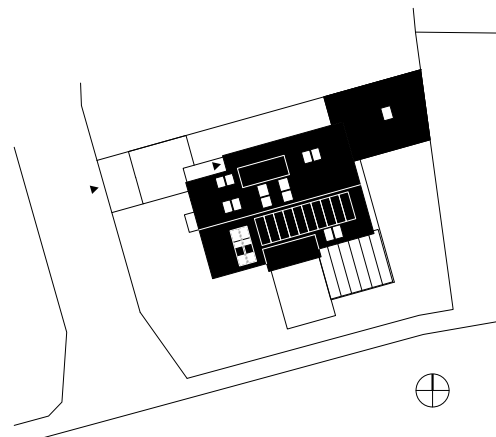




# EVERY DAY HOLIDAYS

"Before we moved in here, we were renting spectacular homes for our holidays. Now we don't need it any more - we hardly need to travel at all. We live in the prettiest holiday home we've ever been to!"

In those words describes Philip Garbers, a timber engineer, his new home. Garbers is owner of Lignophil GmbH, an engineering office for ecological timber construction. He works in cooperation with Dammann-Haus, a small company designing and producing single-family wooden houses. Located in northern Germany, Damman Haus offers energy-efficient, tailor-made solutions. Although every house is different, most of them have gable roofs - often with VELUX windows. Garbers family house is also entirely made out of wood, a material, which the designer knows and likes best. "When I touch wood, my heart goes up. That does not happen when i touch brick or concrete. Following my passion and education, I put a hand on the construction site of my house."




Site plan, showing the house with an annexe and a terrace under a glas roof. The bigger part of the southern roof slope is covered by solar panels.

Entrance area is discreetly located under the eave on the northern facade.







"When my wife saw the image of the bathroom that VELUX prepared, she said: that's exactly how I want it built! Our shower with a roof window above is definitely a design highlight in the house."

## MORE WINDOWS

As Philip Garbers started the design, he already was in contact with VELUX representatives and well aware of the importance of daylight. The design task was to build a home for his family: wife and four children, aged 14 to 6. The ground floor consists of technical spaces, open kitchen with dining area - the heart of the house, a living room and home office. The latter can be converted to a separate apartment, as the house is ready for the future. Should the children move out, it can be divided into independent apartments. There are also technical spaces as well as an annexe, which could be a garage - but is a bike shed and a home wood workshop. All bedrooms are on the first floor, together with a generously designed bathroom. The airy attic consists of two spaces connected by a wooden bridge: playing area and yoga room.

As Philip Garbers was done with the planning, VELUX specialists took over and augmented the design with generous roof openings.

"I looked astonished at the photorealistic renderings VELUX prepared. They suggested much more windows than I was expecting, but the images convinced me to do what they have suggested."

After the position of the roof openings was fixed, Philip Garbers redesigned the roof structure to match the window sizes, so no beams had to be cut.

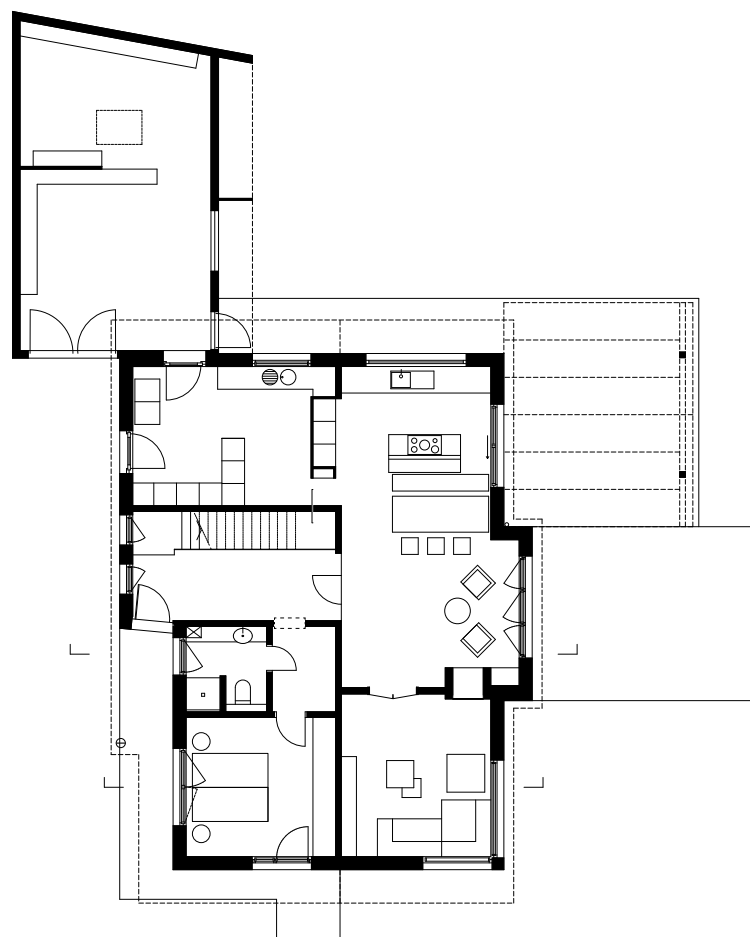
With six people in the house, ventilation is an important topic. All VELUX windows in the attic can be opened and closed literally at the touch of a button.

Apart from this, there is no mechanical ventilation system; the family relies on keeping up intelligent airing habits. The kids are taught to keep the windows and blinds closed on a hot day, and how opening of all windows makes the stale air rise to the top and leave the house through the roof windows.

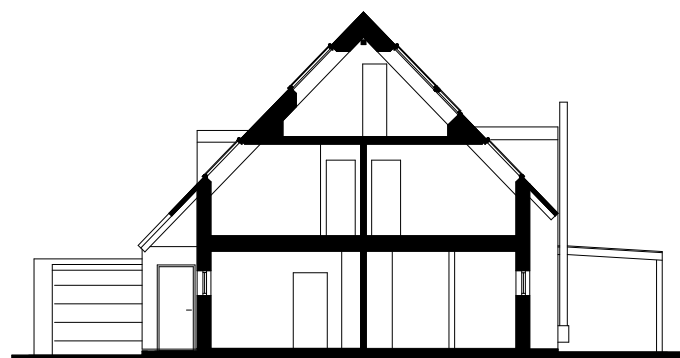
Velux rendering from the design phase







Ground floor plan. Next to the entrance on the left side of the building is currently Mr. Garbers office. The layout allows future possible division of the house into two independent units. In what looks like a garage no car will be ever standing, according to the family. The front part is occupied by bicycles and other sport gear; in the back, under a large VELUX window, Philip Garbers organized a little carpenter workshop for himself.



Cross-section through the office and living room shows the large, two-element windows in the yoga room in the attic.



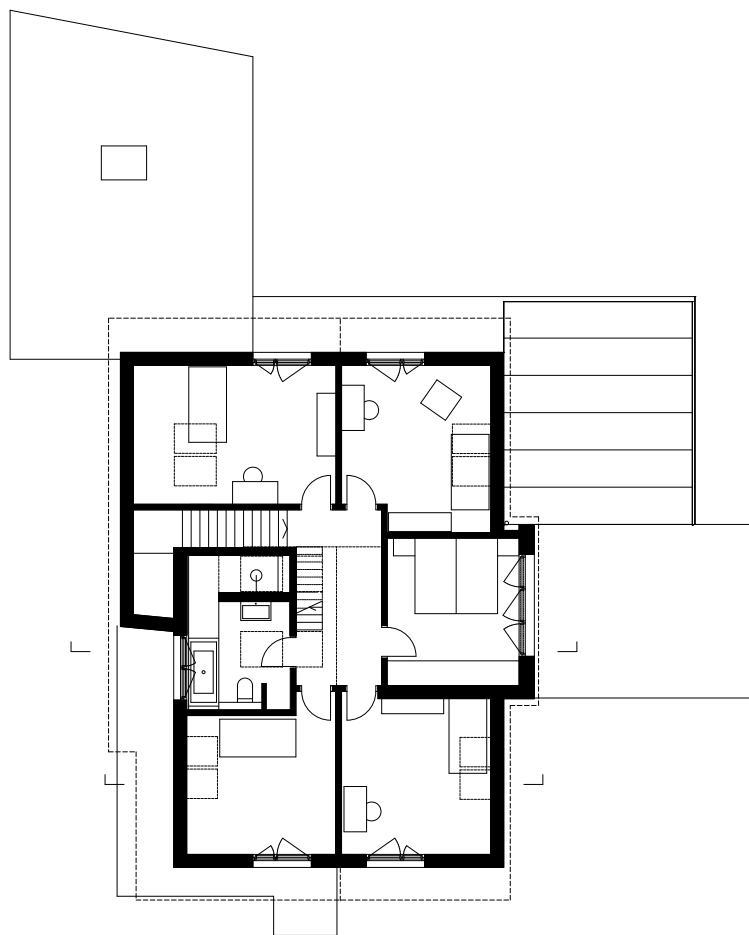




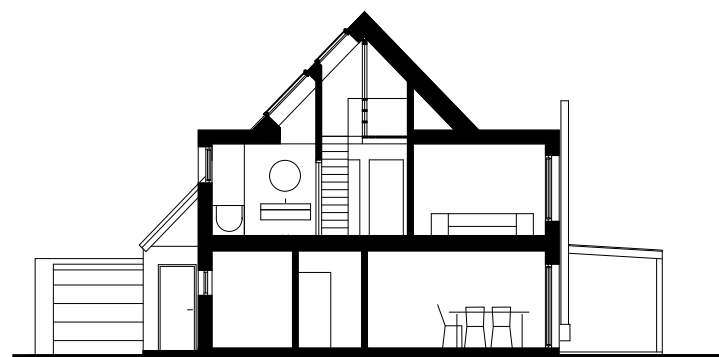








First floor plan.  
The bedrooms and a large bathroom for the whole family are occupying the entire floor.



Cross-section through the dining area, bathroom and the bedroom. The bridge between the rooms in the attic has a lightweight wooden construction, to allow maximum of daylight in the floors below.







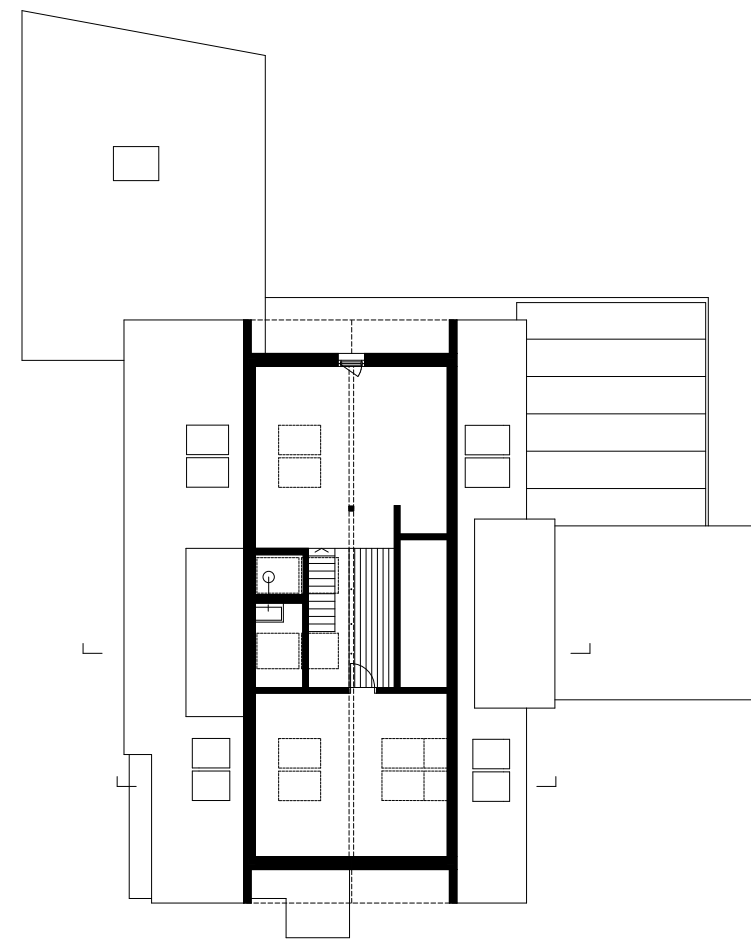




## UNWIND IN THE SUN

The favourite room of the Garbers family is the one where they all meet for meals - and the one where they can unwind and spend time alone.

"We have a room in the house, at the very top, which we keep empty on purpose. It's a calm space, full of light, with beautiful views over the surrounding fields. I like to unroll my yoga mat here and meditate. The daylight up there gives me peace and a clear mind," - says Mr. Garbers, and Ms. Garbers adds: "I always liked to do sports at home, but before I had to do it in dark, cluttered spaces. Now I can leave the turmoil of house life behind. The room is so pretty - thanks to the VELUX windows so much sun comes in. I like to be there."



Floorplan of the attic. The southern side of the roof is covered with solar panels.







## PROJECT DATA

Project: Single family house  
Design: Philip Garbers, timber engineer at Lignophil GmbH  
Location: Buxtehude, Germany  
Year: 2018  
Photos: Torben Eskerod





VELUX A/S  
Ådalsvej 99  
DK-2970 Hørsholm  
Tel. +45 45 16 40 00  
[www.velux.com](http://www.velux.com)

*Bringing light to life™*

**VELUX®**