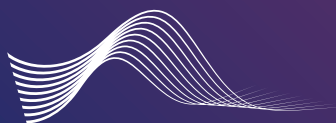
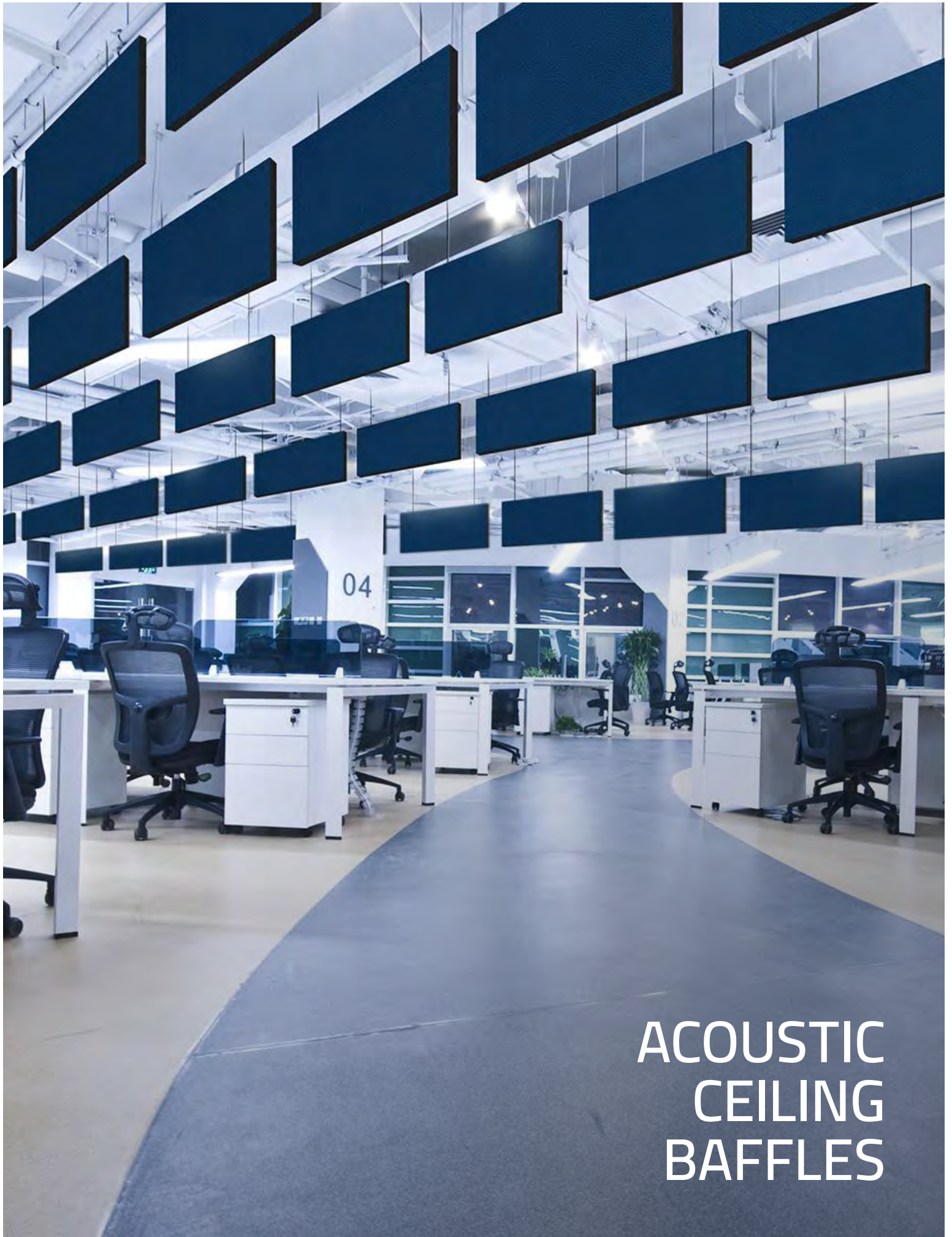


Audimute[®] Acoustic Ceiling Baffles



AUDIMUTE™
sound management solutions



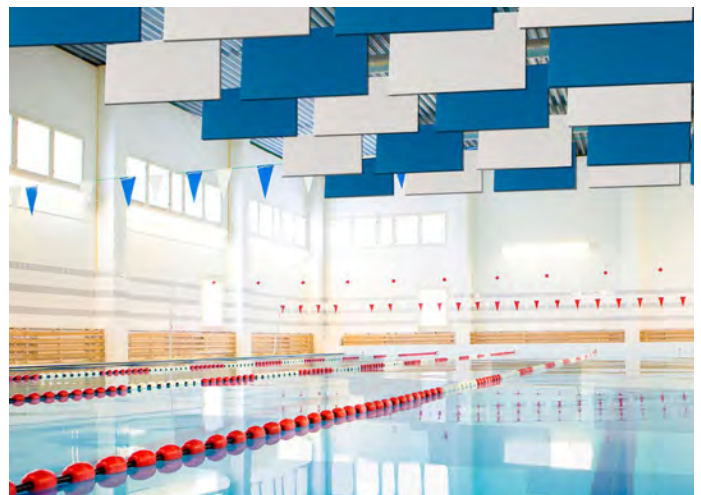
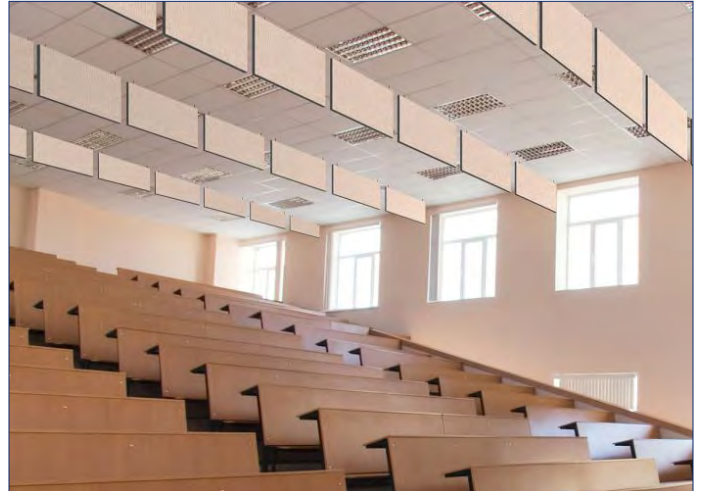
ACOUSTIC CEILING BAFFLES

ACOUSTIC CEILING BAFFLES

Audimute's Acoustic Baffles are an affordable solution for absorbing unwanted noise and troublesome echo.

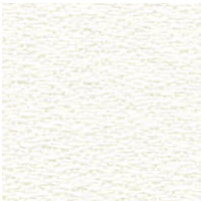
Our baffles can be custom coated in your choice of Sherwin-Williams paint colors to coordinate with your design elements. Audimute acoustic baffles can also be covered in a variety of stylish fabric coverings. The fabric is affixed to the front and back of each baffle and the remaining edges are coated with black paint. Both the coated and fabric covered baffles come with two eye hooks that attach to most ceiling hanging solutions.

Audimute's acoustic baffles are made from our trademarked eco-C-tex® product and are the greenest alternative to traditional foam baffles. These acoustic baffles work great in gymnasiums, school cafeterias, restaurants and any other application where wall space may be limited.

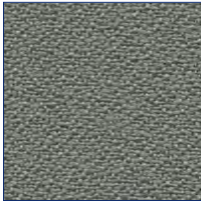


FABRIC ACOUSTIC CEILING BAFFLES: ANCHORAGE FABRICS

Create your own distinctive space with our Anchorage line of fabrics from Guilford of Maine.



White



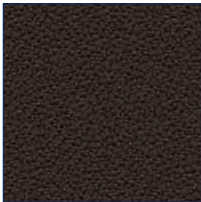
Asteroid



Graphite



Onyx



Coffee Bean



Vanilla



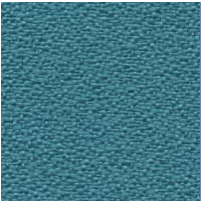
Birch



Fern



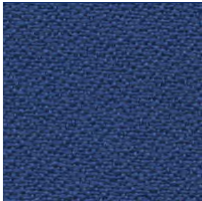
Green Apple



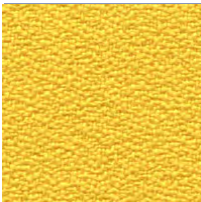
Waterfall



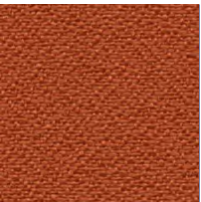
Quarry Blue



Lapis



Lemon



Pumpkin



Geranium



Orchid

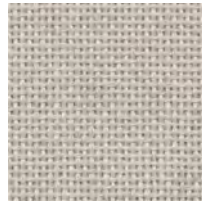
FABRIC ACOUSTIC CEILING BAFFLES: FR701 & SYNOPSIS FABRICS

The FR701 & Synopsis fabrics from Guilford of Maine are bleach-cleanable.

FR701 FABRICS:



Eggshell



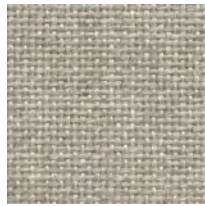
Pearl



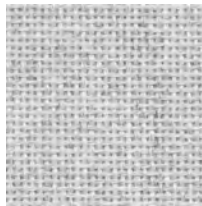
Quartz



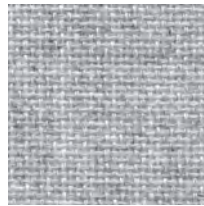
Opal



Cement Mix



Silver Papier



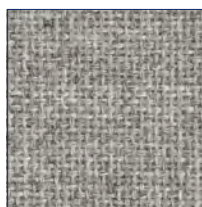
Blue Papier



Wedgewood



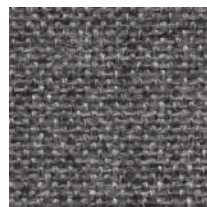
Silver Neutral



Grey Mix



Flannel



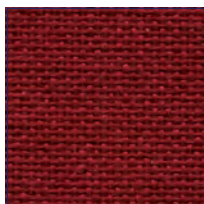
Medium Grey



Chartreuse



Sapphire



Red

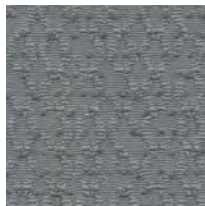


Black

FABRIC ACOUSTIC CEILING BAFFLES: FR701 & SYNOPSIS FABRICS

The FR701 & Synopsis fabrics from Guilford of Maine are bleach-cleanable.

SYNOPSIS FABRICS:



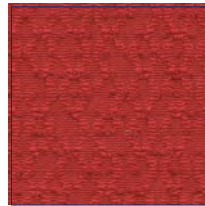
Ash



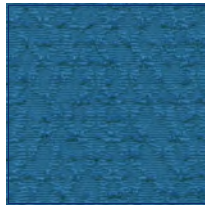
Taupe



Bisque



Poppy



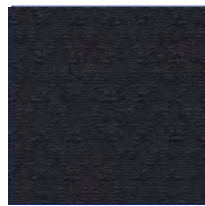
Cerulean



Blue Marine



Flannel



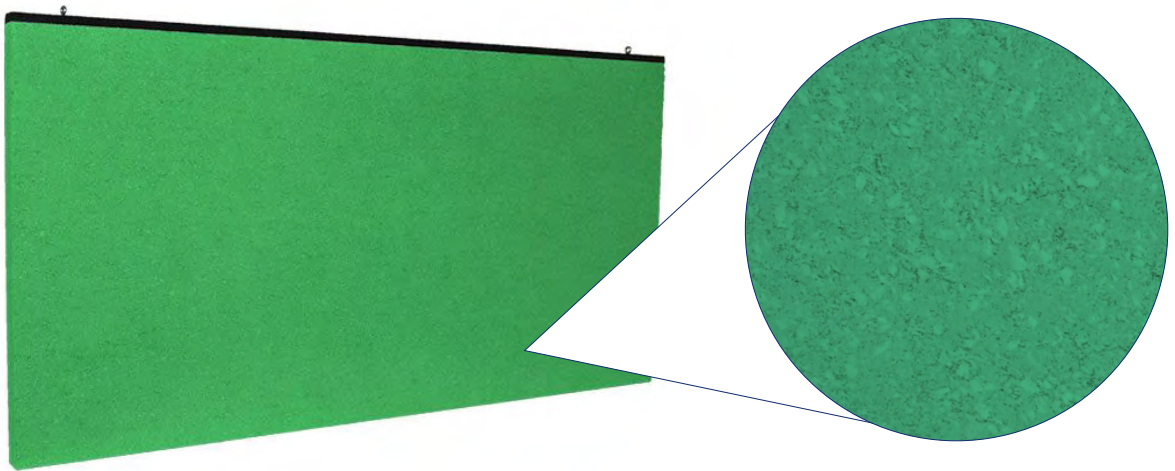
Ebony

ACOUSTIC CEILING BAFFLES: ACOUSTICOLOR® COATING

The possibilities are endless.

There are 1,000's of color options to choose from Sherwin-Williams' line of acoustical coatings. We can also match colors from other commercial paint manufacturers. With AcoustiColor Acoustic Ceiling Baffles you have the opportunity to match the decor of any space. Our coated acoustic panels are made from recycled cotton and paper products which gives a unique textured finish.

NOTE: Color matching cannot be guaranteed across shipments from different orders and variation may be more pronounced beyond the normal commercial range.



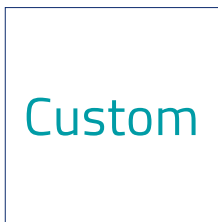
AcousticColor® Ceiling Baffle

AcoustiColor® Swatch Detail

ACOUSTIC CEILING BAFFLES: ACOUSTICOLOR® COATING OPTIONS

Add exceptional sound absorption, superior aesthetics, and design flexibility that reflects your individual personality and style with AcustiColor® Ceiling Baffles.

AcustiColor® Ceiling Baffles are lightweight and create a modern appearance combined with noise reduction and reverberation control. Stylish lines and soft shapes suspend horizontally from the ceiling and absorb sound across their entire surface for unequalled acoustical performance. Because Acoustic Ceiling Baffles are created using recycled materials, natural variations in texture and shading can occur.



Custom Color



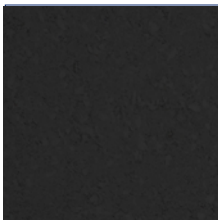
Software



Argos



Stone White



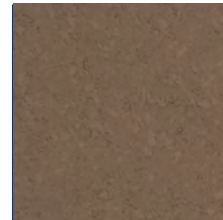
Tricorn Black



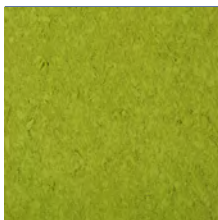
Amazing Gray



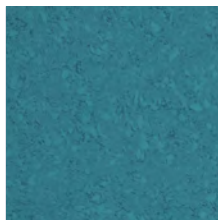
Tavern Taupe



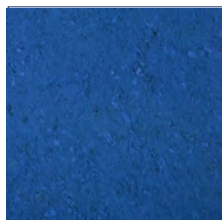
Cobble Brown



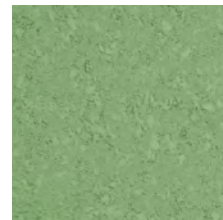
Hep Green



Great Falls



Blue Chip



Organic Green



Daisy



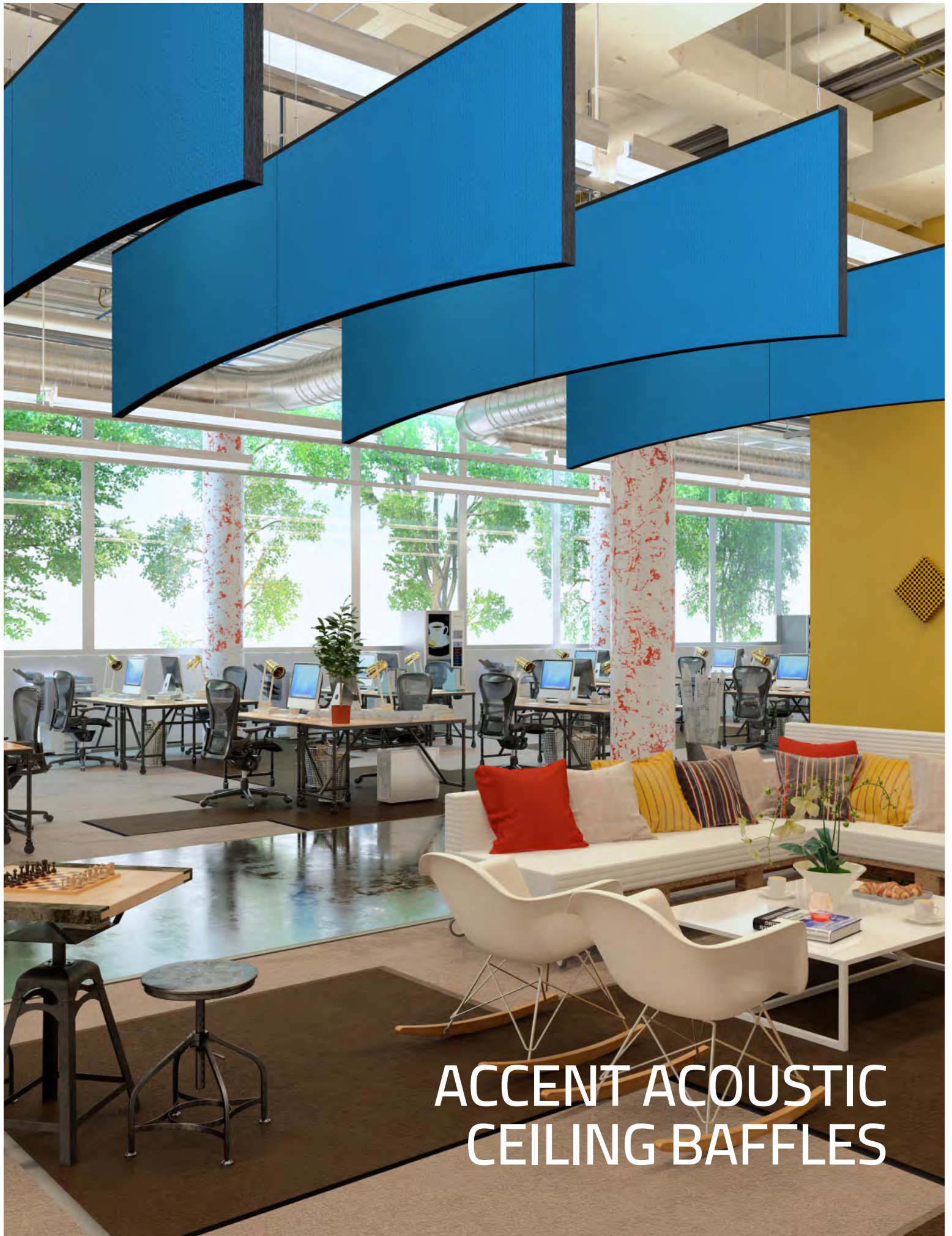
Tango



Redbud



Vigorous Violet



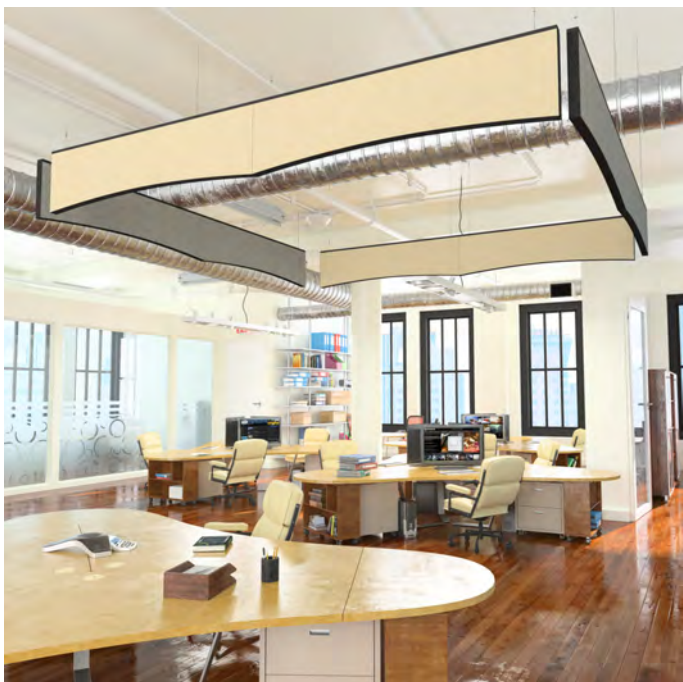
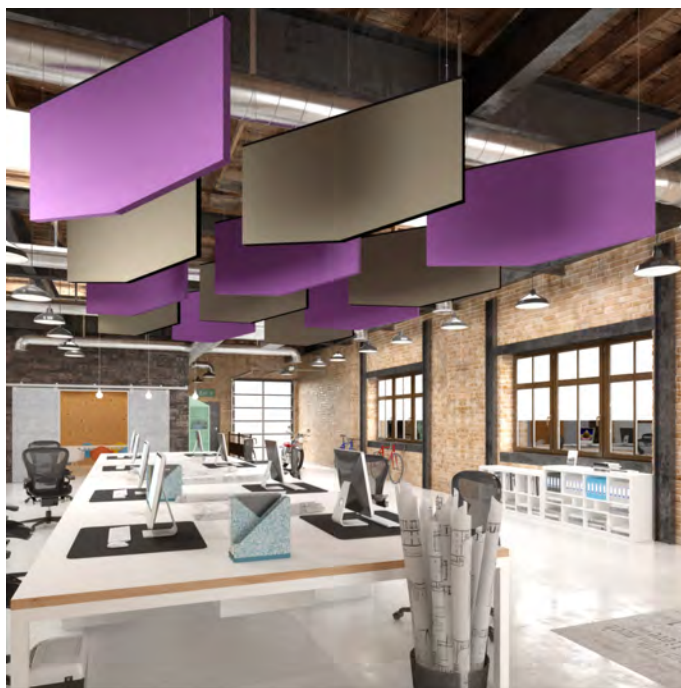
ACCENT ACOUSTIC CEILING BAFFLES

ACCENT ACOUSTIC CEILING BAFFLES

Acoustics with style!

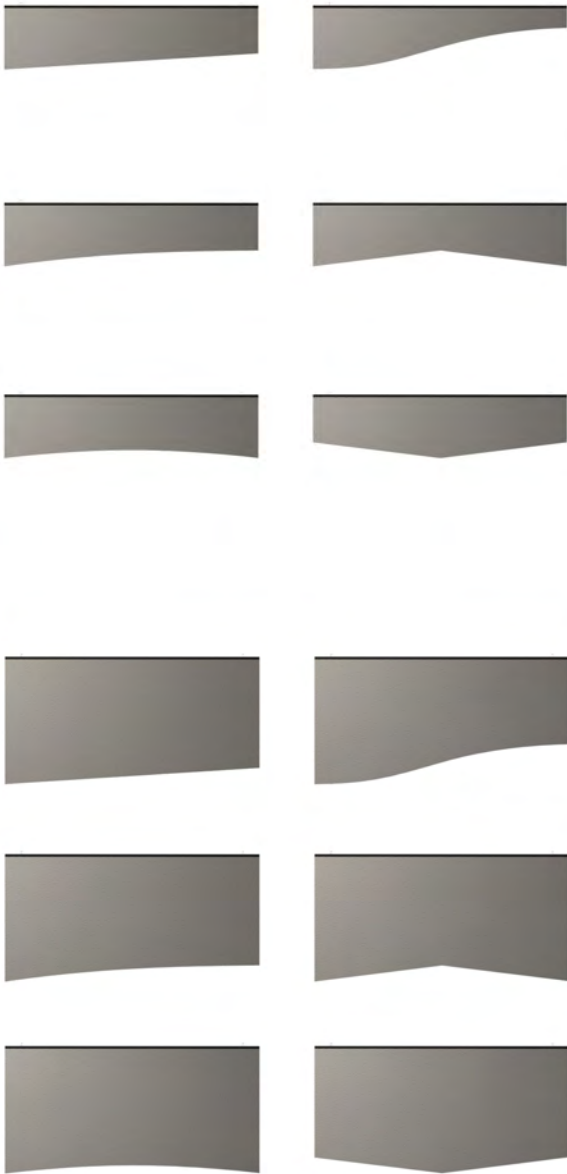
Developed to bring design flexibility, aesthetic appeal, and superior acoustic control to your ceilings. Accent Acoustic Ceiling Baffles are available in Guilford of Maine designer acoustical fabrics, AcoustiColor, and as Custom Image Acoustic Baffles. Select a fabric or paint color that blends seamlessly with your décor, or choose a custom AcoustiColor, fabric, or use your images for a personalized sound solution that stands out in your space.

Exposing both sides of an acoustic ceiling baffle is one of the most effective methods for controlling ambient noise, reducing excessive reverberation, as well as echo and sound absorption in large open spaces.

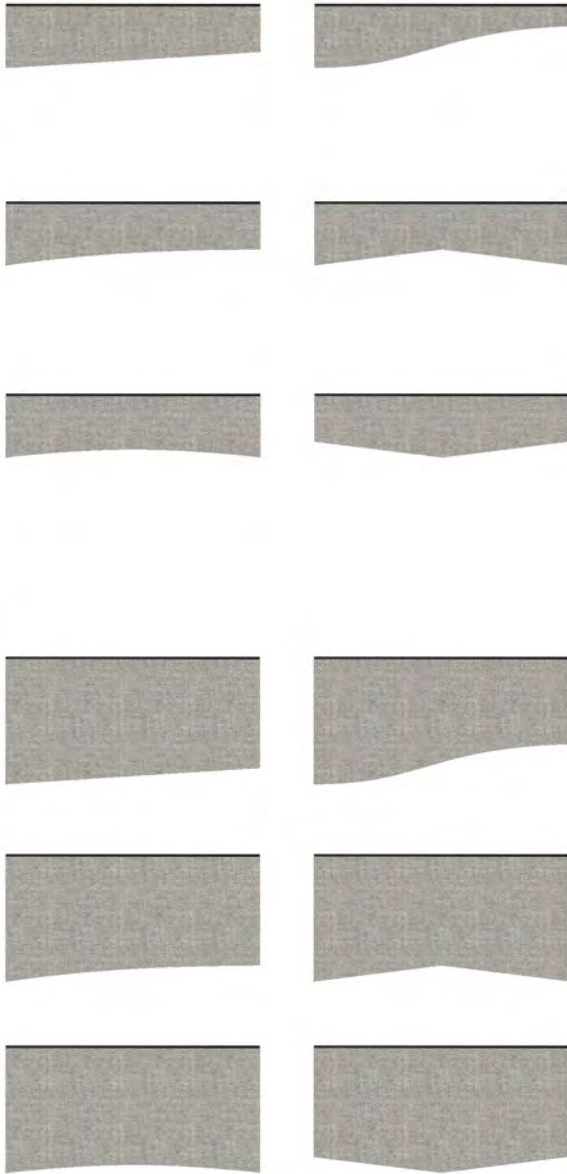


ACCENT ACOUSTIC CEILING BAFFLES: Shapes & Cover Materials

Fabric Accent Acoustic Ceiling Baffles - Anchorage
1' x 4' & 2' x 4'

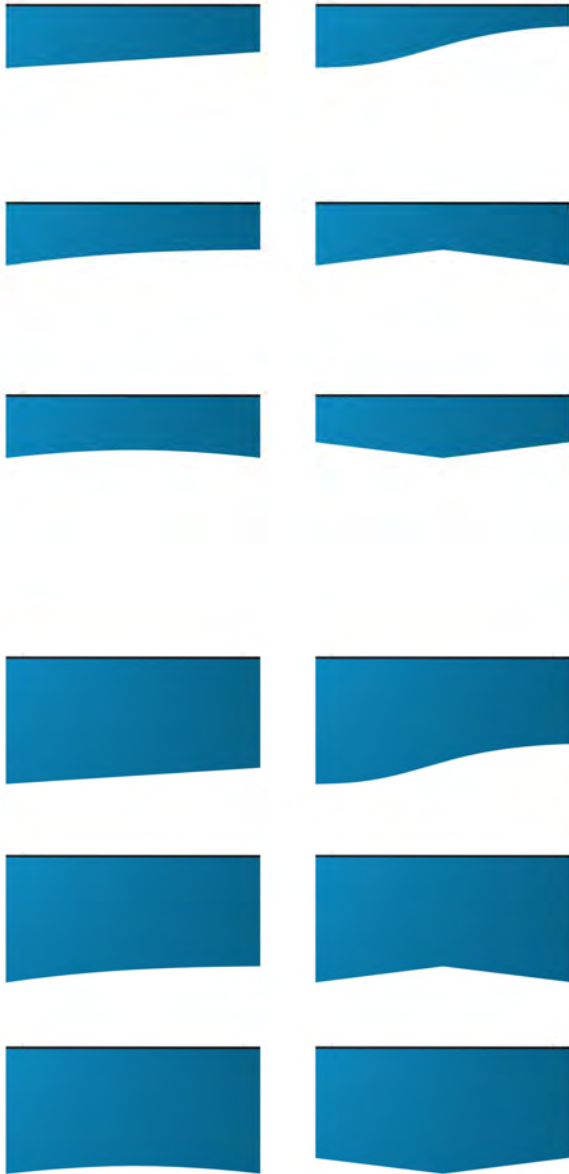


Fabric Accent Acoustic Ceiling Baffles - FR701
1' x 4' & 2' x 4'

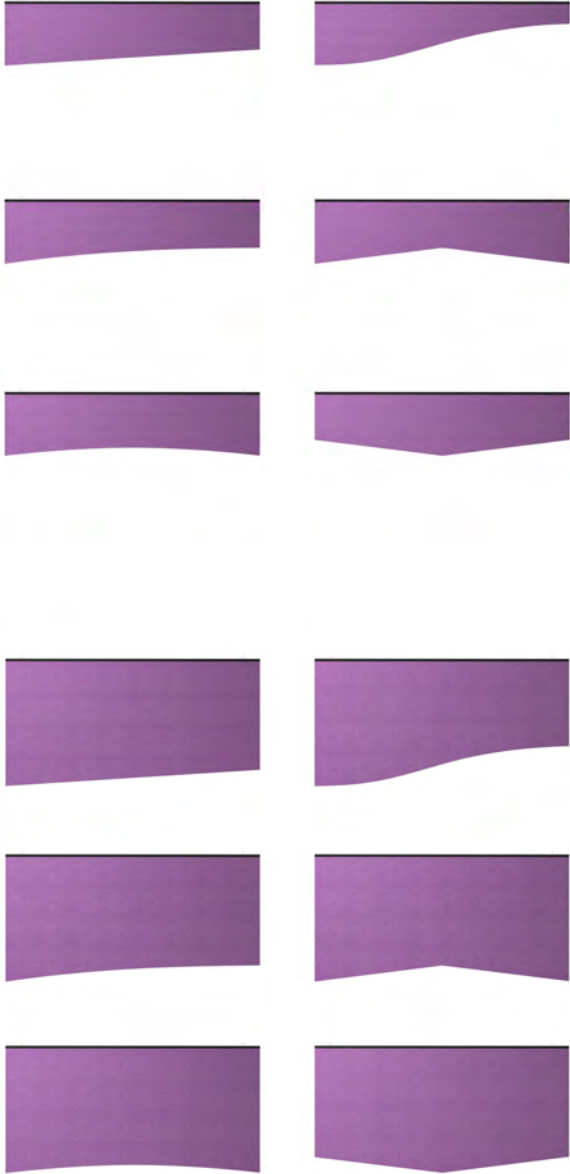


ACCENT ACOUSTIC CEILING BAFFLES: Shapes & Cover Materials

Fabric Accent Acoustic Ceiling Baffles - Synopsis 1' x 4' & 2' x 4'



AcoustiColor® Accent Acoustic Ceiling Baffles 1' x 4' & 2' x 4'



ACCENT ACOUSTIC CEILING BAFFLES: Shapes & Cover Materials

Custom Image Accent Acoustic Ceiling Baffles
1' x 4' & 2' x 4'

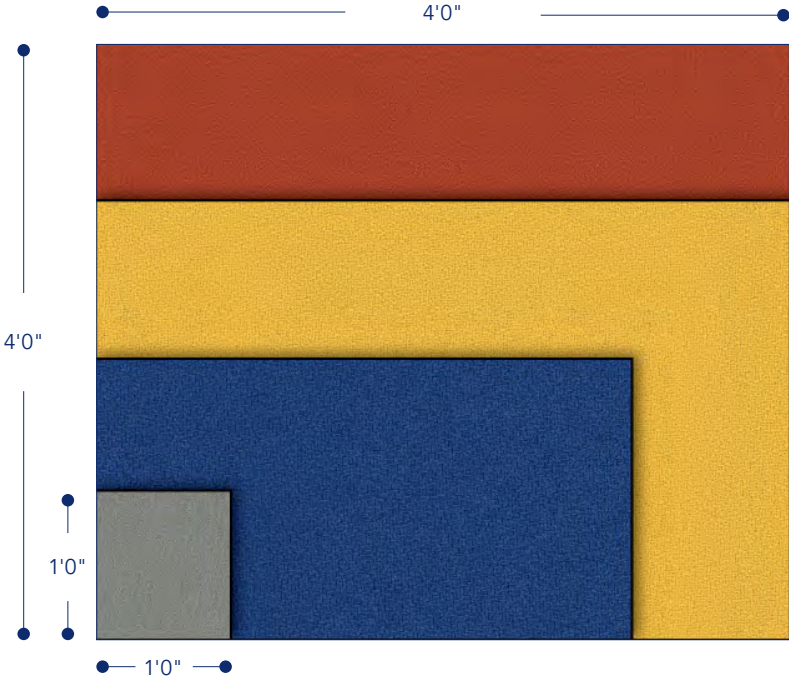




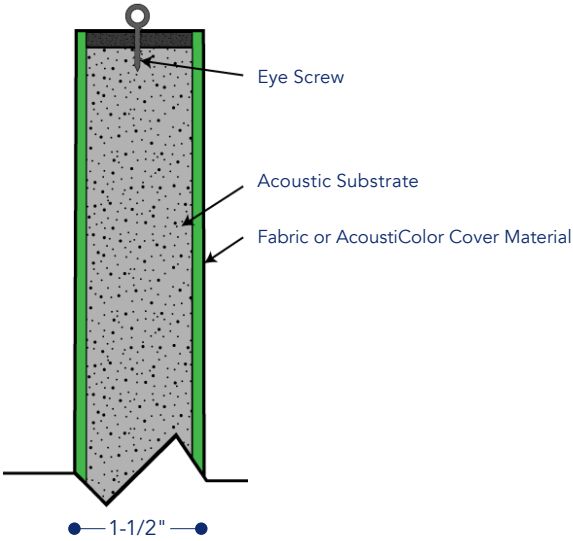
ACOUSTIC
CEILING Baffles
SPECIFICATIONS

ACOUSTIC CEILING BAFFLES

ELEVATION: ACOUSTIC CEILING BAFFLE MIN. TO MAX. SIZE
(Custom Sizes Available)



SECTION VIEW 1-1/2" ACOUSTIC CEILING BAFFLE DETAIL



ACOUSTIC CEILING BAFFLES: SPECIFICATIONS

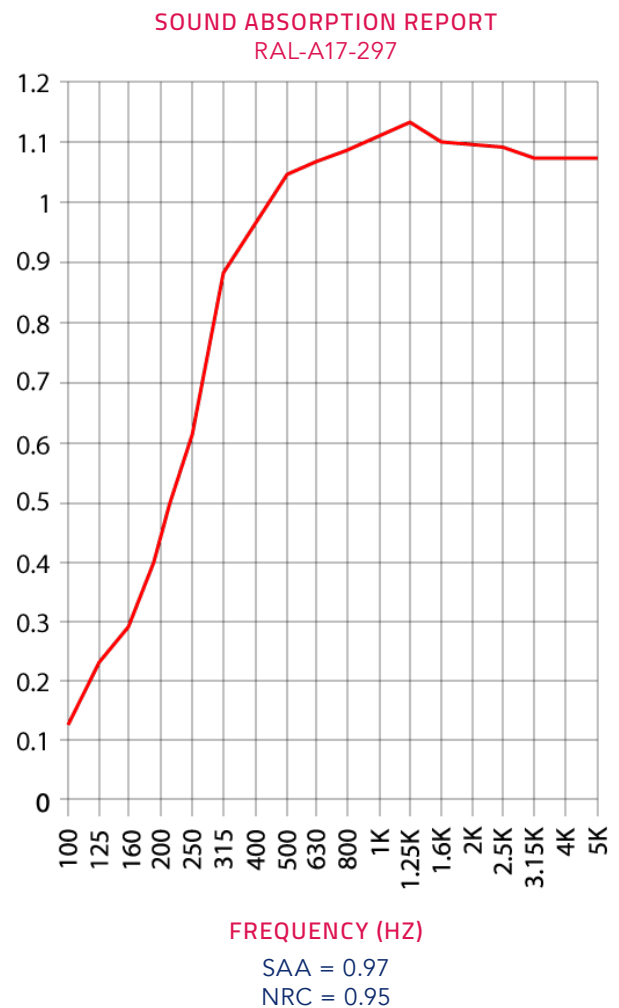
CONTENT	Acoustic substrate: P.E.T. 10% - 30%, Recycled Cotton 70% - 90%, Fabric: Recycled polyester Hardware Mounting Strip: Polyester Felt
COMPONENTS	Acoustic Substrate, 2 Eye Screws, Hardware Mounting Strip, Fabric/Coating
THICKNESS	1-1/2"
THICKNESS TOLERANCE	+ -1/4"
SIZES & WEIGHTS	Standard Acoustic Baffles: 1' x 3' (2.5 lb) , 1' x 4' (3.25 lb), 2' x 2' (3.25 lb), 2' x 3' (4.75 lb), 2' x 4' (6.25 lb), 3' x 3' (7 lb), 3' x 4' (9.25 lb), and 4' x 4' (12.25 lb) Accent Acoustic Baffles: 1' x 4' (3.25 lb) and 2' x 4' (6.25 lb) Custom sizes available upon request. Please Note: Standard Acoustic Baffles have an additional 1/2" added to the top of each baffle because of the mounting strip. Accent Acoustic Baffles have the 1/2" mounting strip incorporated into the height measurement of each Baffle.
FINISH OPTIONS	Fabric, Images, AcoustiColor® Coating
ACCENT BAFFLE SHAPES	Blade, Half Arch, Arch, Wave, Peak, Valley
APPLICATION	Indoor Ceiling
CUTTING / ALTERATIONS	Table Saw with Metal Cutoff Blade, Jig Saw with T-Shank Scalloped Knife Blade, Foam Saw, Utility Knife
INSTALLATION	2 Eye Hooks (included), Cable (not included)
HANDLING / CARE	When handling Acoustic Baffles make sure hands are clean and oil free. Vacuuming or light brushing is recommended to prevent dust and soil buildup.
STORAGE	Acoustic Baffles must be stored in a dry place. Delivery Packaging is not ideal for storage purposes. It is advised to place a polyethylene cover over the stack when packaging is removed, to reduce moisture absorption. It is recommended that baffles be stored horizontally. It is recommended that baffles should not be stacked. It is strongly recommended to avoid storage longer than 6 months. Do not allow water to come into direct contact with the material during storage. Store in a cool dry space 55°F - 85°F.
FIRE RATING	ASTM E84 Class A.
COLOR FASTNESS TO LIGHT	Grade 4 min. at 40 hours
COLOR FASTNESS TO CROCK	Grade 4 min. dry & Grade 3 min. wet
ACOUSTIC RATING	NRC: 1-1/2"= 0 .95

ACOUSTIC CEILING BAFFLES: ACOUSTIC TESTING

Fabric Acoustic Ceiling Baffle Test Report

The test report quotes the frequency dependent sound absorption data as well as the single number ratings. Data taken from Test Report RAL-A17-297 conducted by Riverbank Acoustical Laboratories. Complete test results are available upon request.

FREQUENCY (HZ)	ABSORPTION COEFFICIENT
100	0.13
125	0.23
160	0.29
200	0.43
250	0.62
315	0.87
400	0.96
500	1.04
630	1.07
800	1.09
1000	1.11
1250	1.14
1600	1.10
2000	1.10
2500	1.09
3150	1.06
4000	1.07
5000	1.06



Ceiling Installation Instructions:

AUDIMUTE ACOUSTIC CEILING BAFFLES

ACOUSTIC CEILING BAFFLES



Instructions:

To ensure proper installation, follow the instructions below and check building codes.

1. Start screwing in the included Eye Hooks into the pre-drilled locations by hand, then use a 9/16" socket to finish screwing them in. ****IMPORTANT**** Be sure not to over-tighten.
2. Hang the Baffle using hardware with load ratings twice that of the product's weight.



Mitch Zlotnik
Founder & President of Audimute

Our founder Mitch Zlotnik loved his drums and respected his neighbors. So he invented a versatile sound absorption solution a musician could afford and a neighbor would love. Today our invention, eco-C-tex® is the key ingredient in a versatile suite of sound absorption and sound proofing solutions. Proudly made from 100% recycled materials, Audimute products are revolutionizing the way people experience work, worship, entertainment, and their home.

1.866.505.MUTE
sales@audimute.com
9 am – 5 pm, Monday – Friday EST.