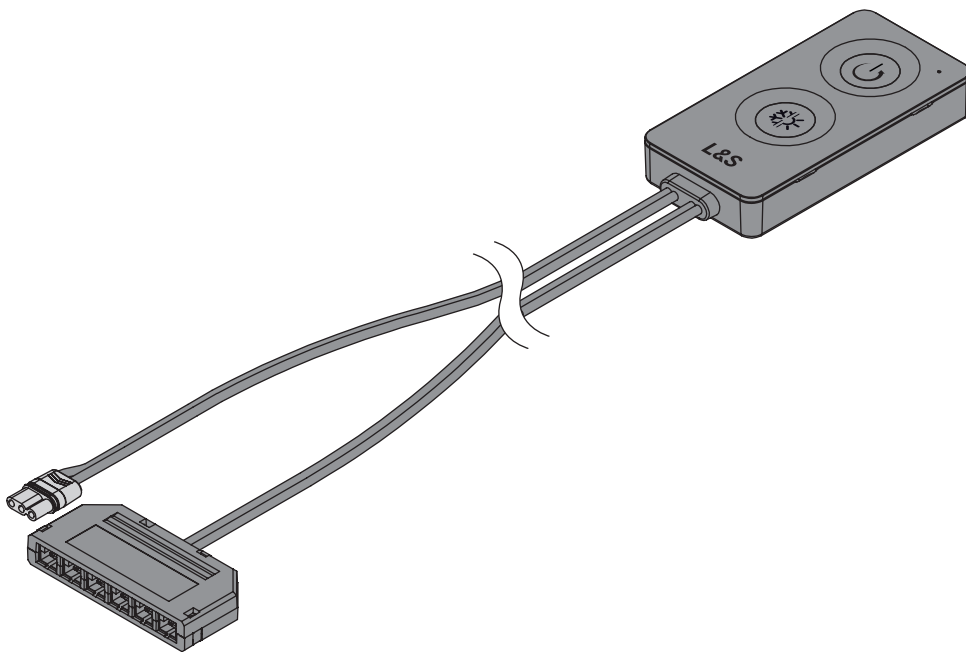


SMART SWITCH

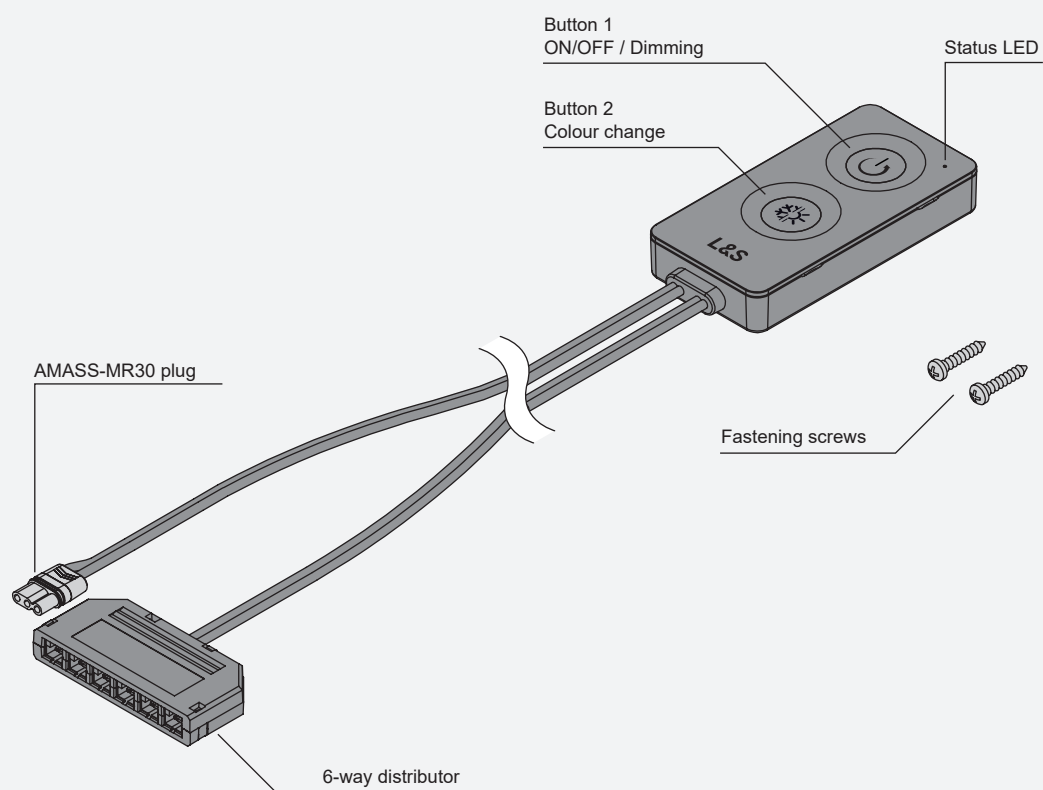
Installation, Operation and Pairing Options



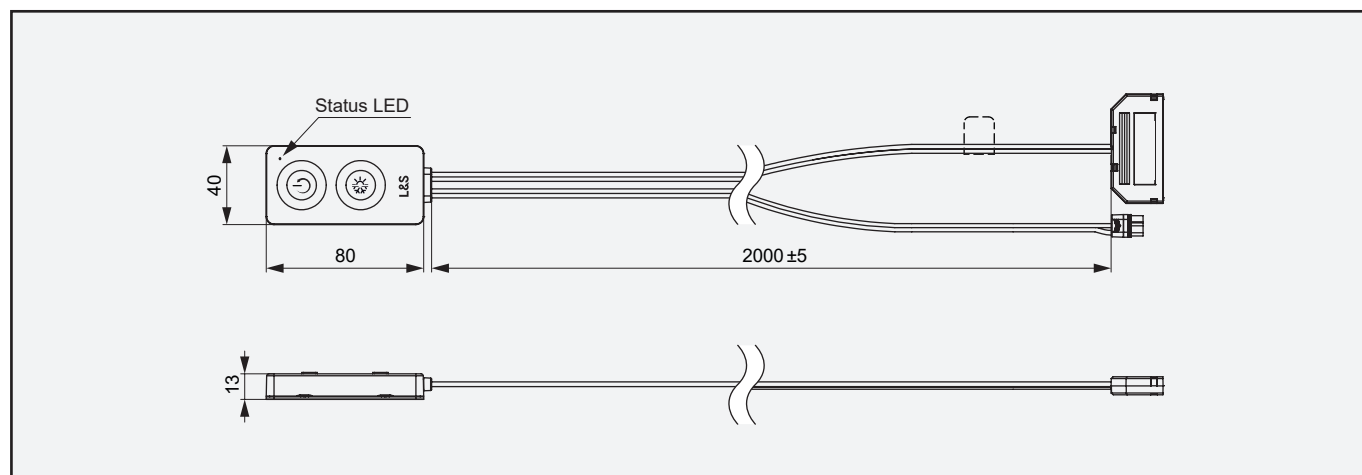
CONTENTS

Overview	3
Dimensions	4
Connection options.....	4
Assembly	5
Operation - Smart Switch	8
Pairing a second Smart Switch	10
Pairing a remote control.....	12
Pairing multiple remote controls	14
Pairing additional components directly	16
Connecting Zigbee Bridge.....	18
Connecting a Smart Switch with Zigbee Bridge and a remote control	20
Remote control - Operation	24
Remote control - Reset.....	25
Smart Switch - Setup mode.....	26
Smart Switch - Reset	27

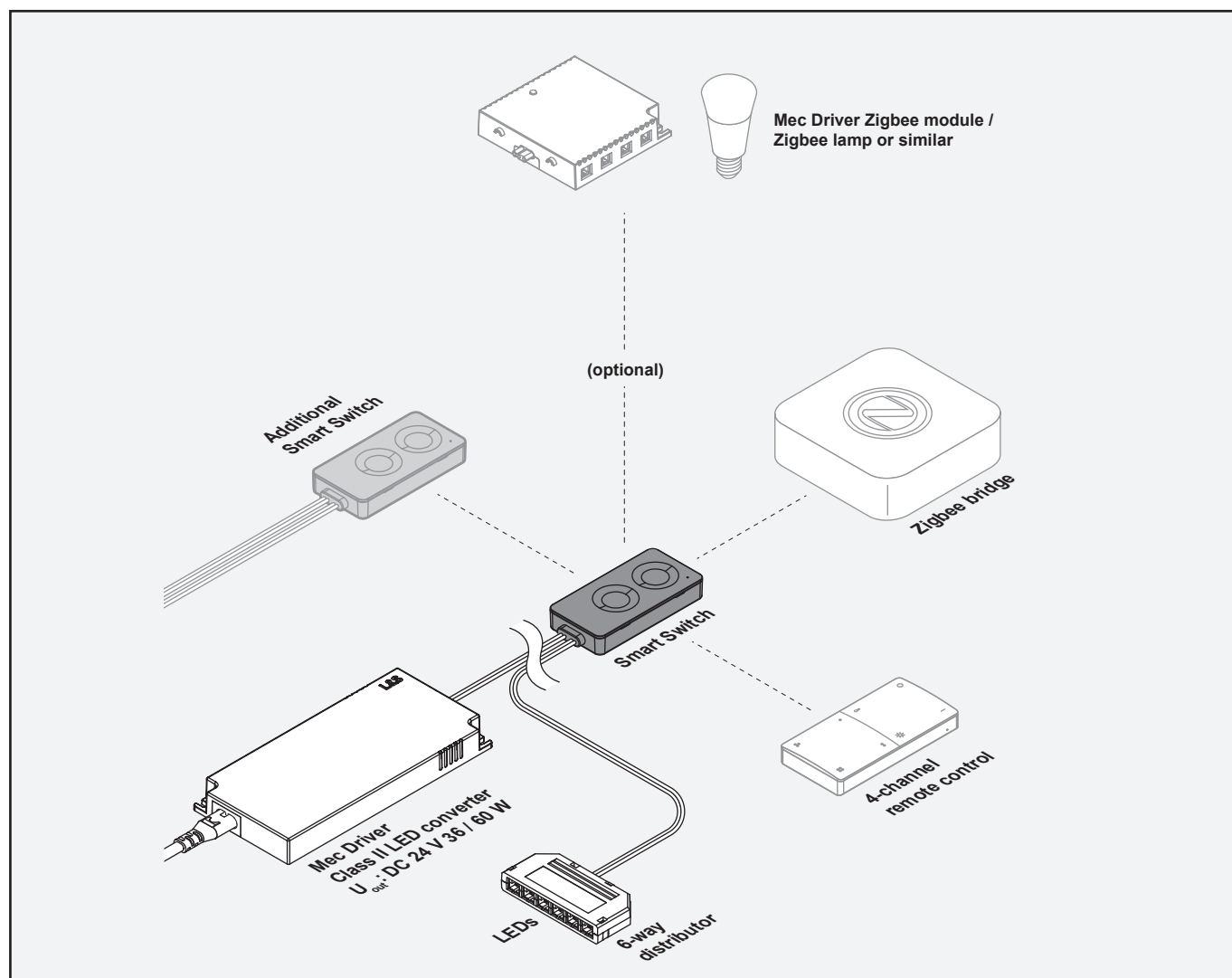
OVERVIEW



DIMENSIONS



CONNECTION OPTIONS

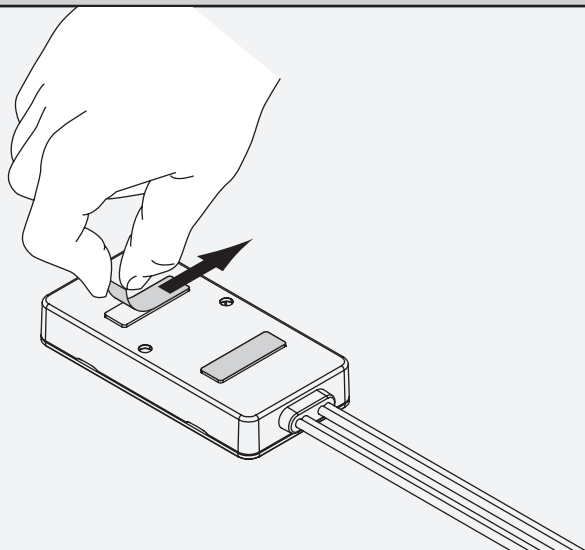


ASSEMBLY

ADHESIVE MOUNTING

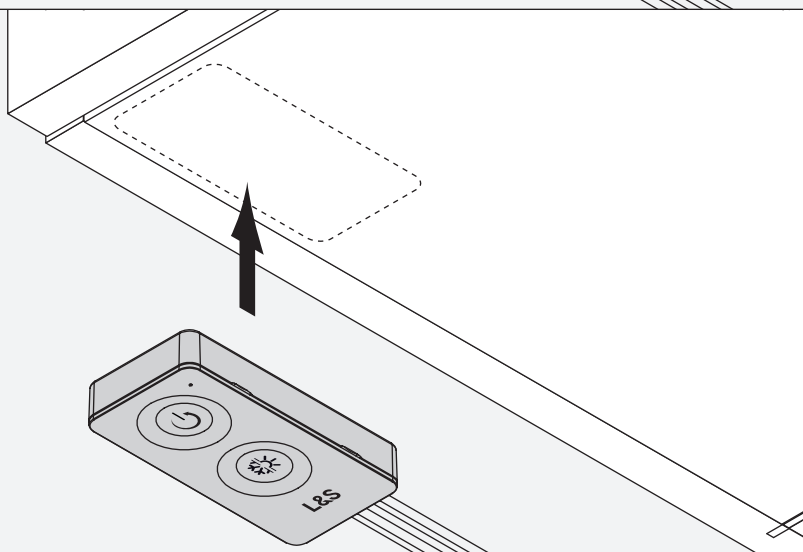
(for screw mounting, see the following page)

Remove the protective strips from the adhesive tape on the bottom.

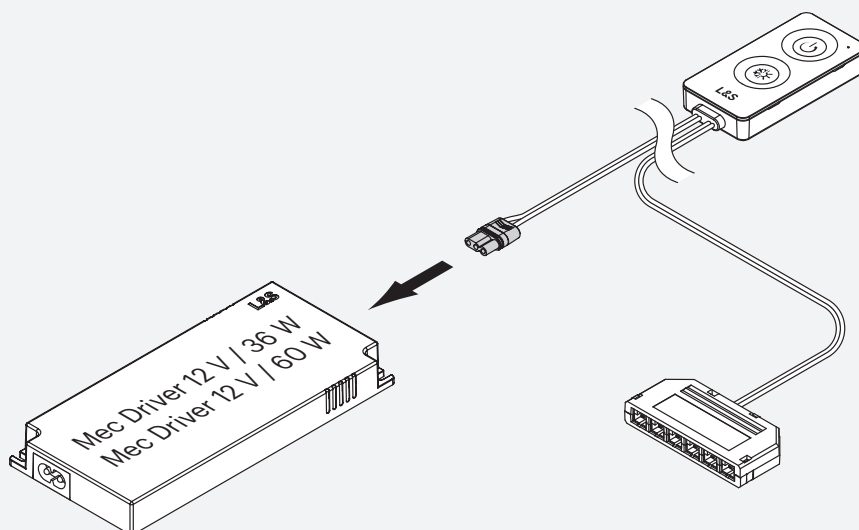


Clean the contact surface.

Fasten the Smart Switch to the desired location.



Insert the AMASS-MR30 plug into the socket on the Mec Driver.

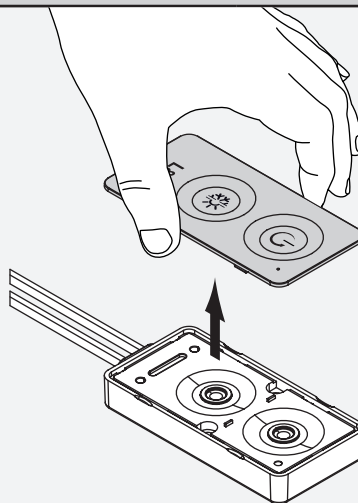


SCREW MOUNTING

Remove the top cover of the Smart Switch.

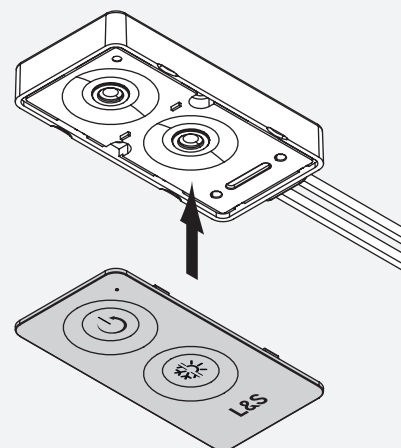
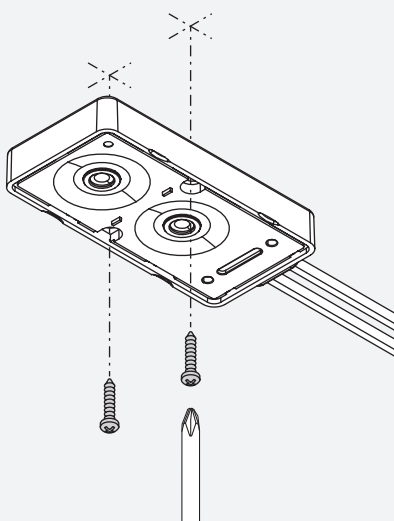
Note:

The cover is clipped on. There are four indentations on the side. To release the cover, use your fingernail or a thin tool to press into the indentations.

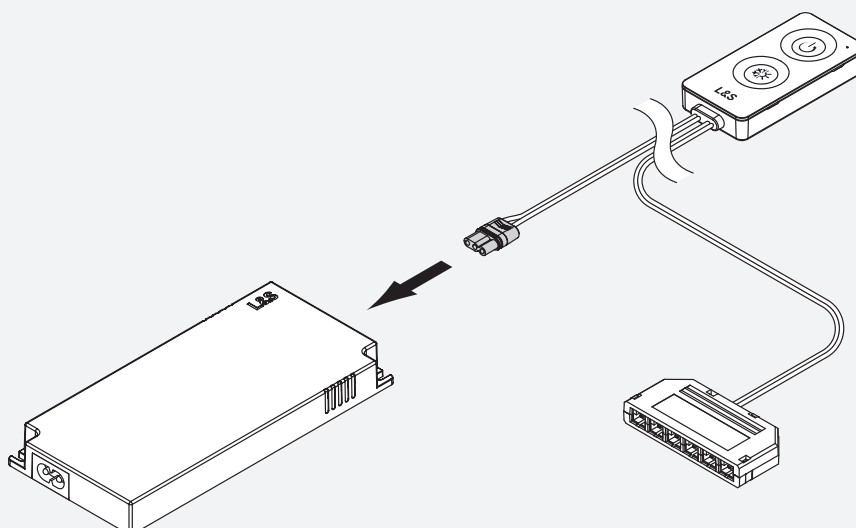


Use the screws provided to fix the Smart Switch in place.

Press the cover back onto the Smart Switch.



Insert the AMASS-MR30 plug into the socket on the Mec Driver.



CONNECTION

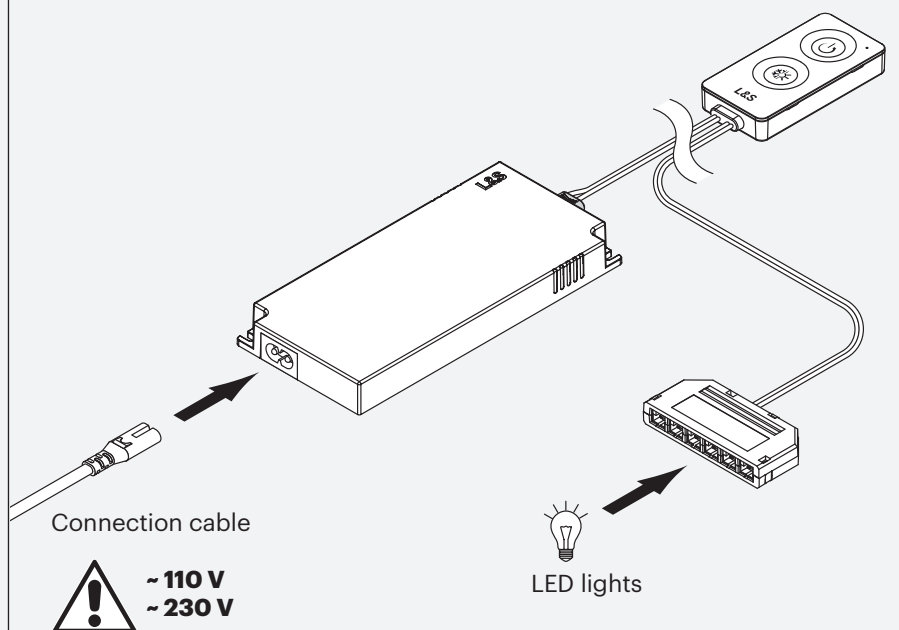
Plug the LED lights into the sockets on the 6-way distributor.

Observe the maximum power of the Mec Driver!

If the lights require more power, use a Mec Driver with a higher wattage.

Observe the maximum load capacity of the 6-way distributor!

Only connect lights up to max. 36 W (3 A) per output or with a max. total power consumption of 60 W (5 A).

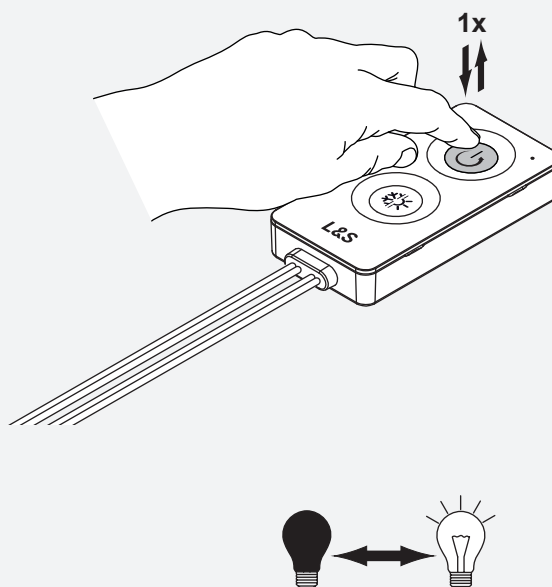


Observe the maximum power of the Mec Driver and the 6-way distributor!

OPERATION - SMART SWITCH

ON/OFF

Briefly press button 1.

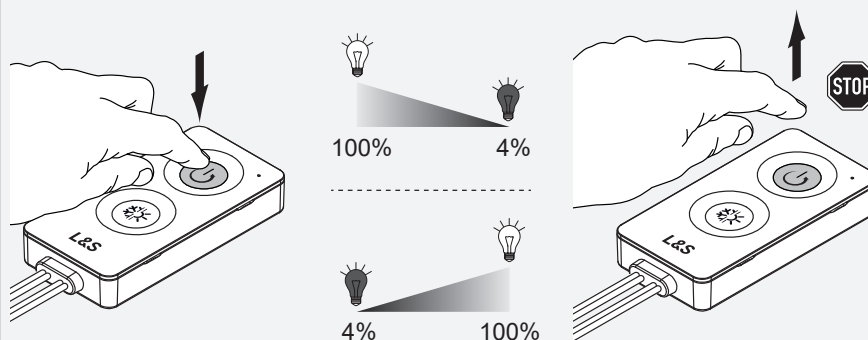


Dimming

Press and hold button 1 to dim the brightness.

Once the desired brightness is reached, release button 1.

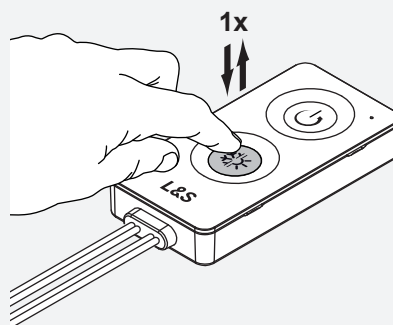
Press again to change the dimming direction.



Colour change (stepped)

Briefly press button 2 to change the colour temperature in three steps:

Warm white - Cool white - Neutral white

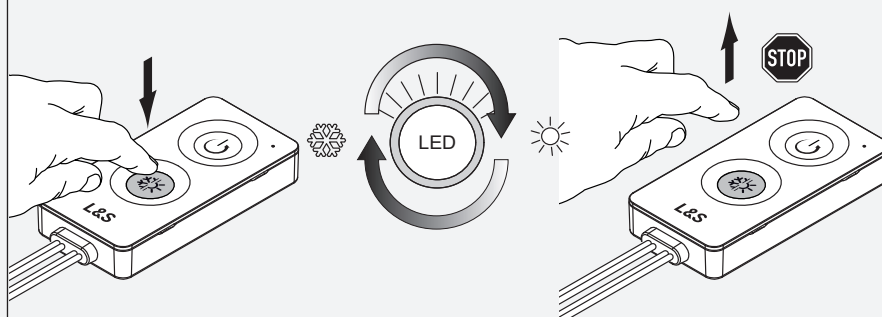


Colour change (stepless)

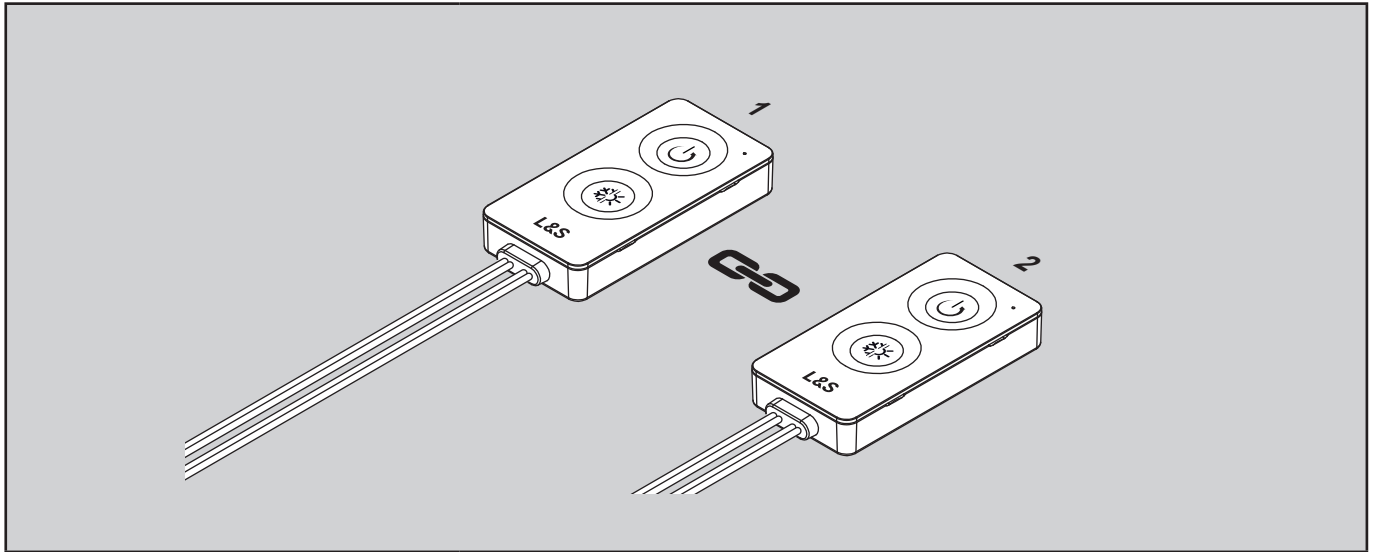
Press and hold button 2 to adjust the colour temperature from warm white to cool white.

Once the desired colour temperature is reached, release button 2.

Press again to change the colour temperature from cool white to warm white.



PAIRING A SECOND SMART SWITCH

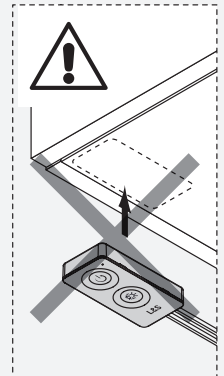
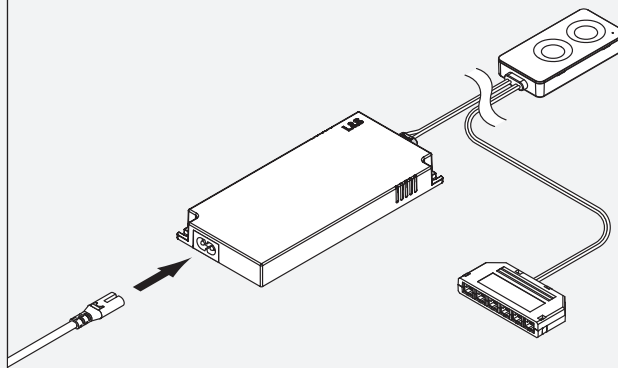


Connect the Smart Switch (2) to the Mec Driver and mains voltage.



Do not bond the second Smart Switch to its final position yet!

To enable the Touch Link function, make sure that the second Smart Switch can be positioned close to the Smart Switch already installed.

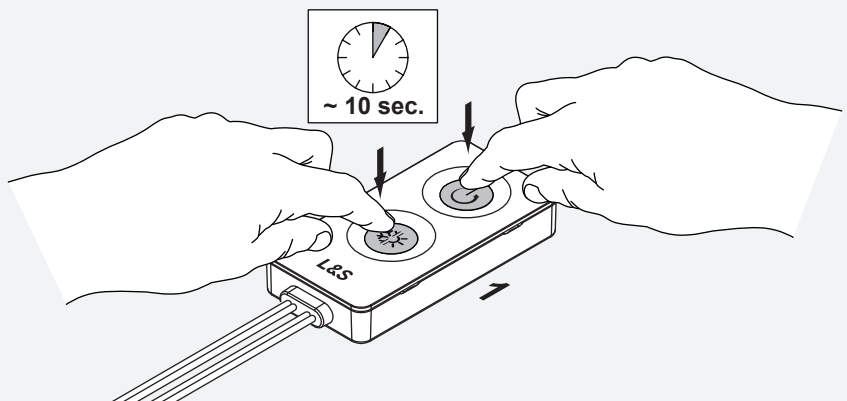


Press and hold both buttons on Smart Switch **1** for approx. 10 seconds.

Note:

While the buttons are being pressed, the status LED on Smart Switch **1** lights up. After 10 seconds, the Smart Switch switches to setup mode and the status LED flashes red.

Setup mode remains active for two minutes. Carry out the next steps now!

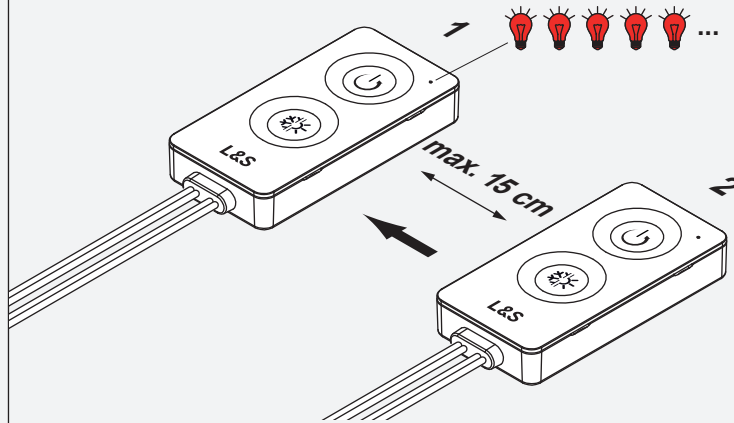


Smart Switch **1** is in setup mode.

Hold Smart Switch **1** and Smart Switch **2** close together to carry out the pairing process.

Note:

Smart Switch **2** should be a maximum of 15 cm away from Smart Switch **1** during the entire pairing process. If the connection cannot be made successfully, reduce the distance.

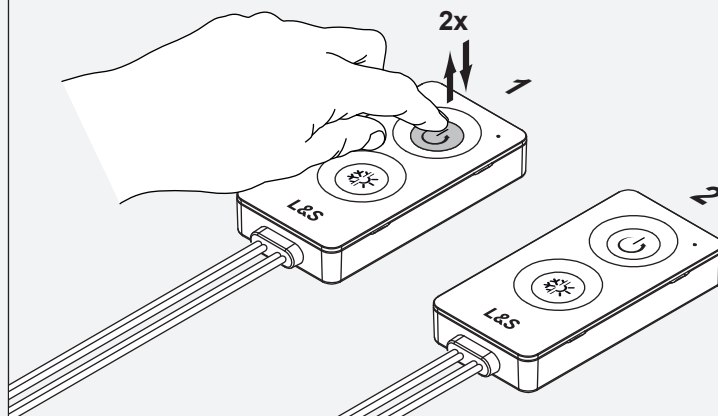


Briefly press button 1 twice on Smart Switch **1** (double-click).

Note:

The lights connected to Smart Switch **2** flash several times.

The status LED on Smart Switch **1** flashes green.

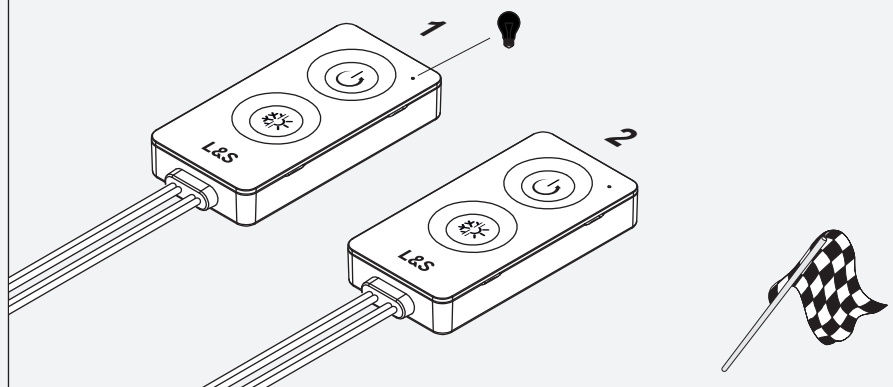


The status LED on Smart Switch **1** goes out.

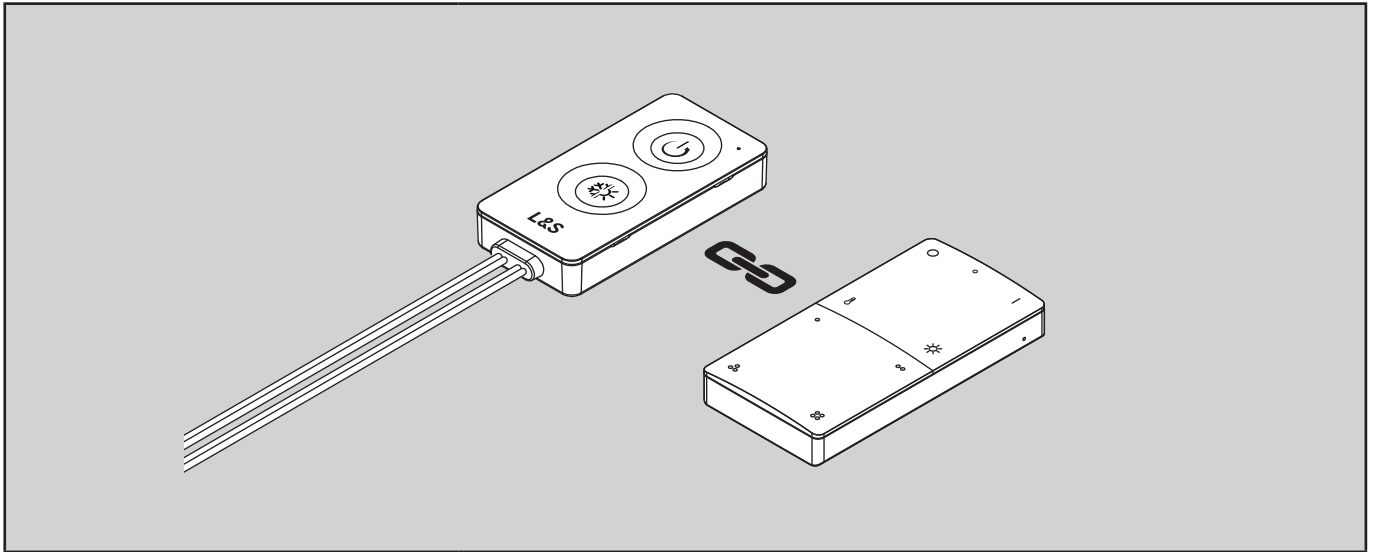
Both Smart Switches are connected and the pairing process is complete.

Note:

If Smart Switch **1** does not control both lighting groups, repeat the pairing procedure with Smart Switch **2**.



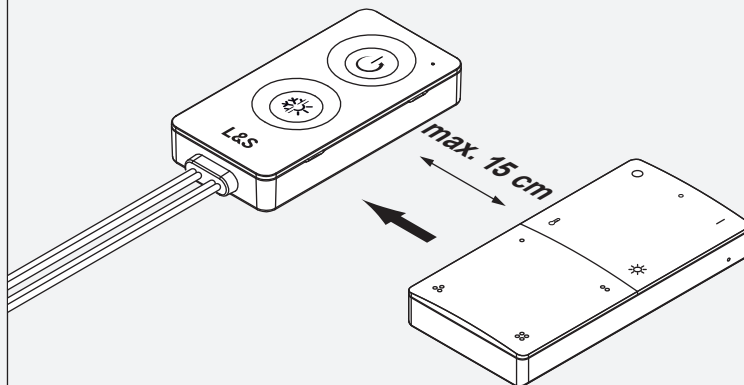
PAIRING A REMOTE CONTROL



Hold the Smart Switch and remote control close together to carry out the pairing process.

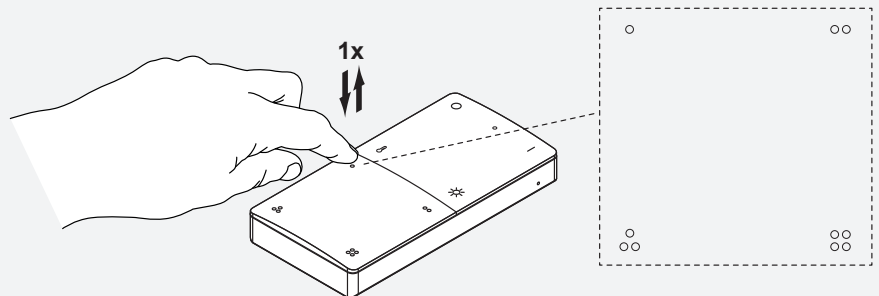
Note:

The remote control should be a maximum of 15 cm away from the Smart Switch during the entire pairing process. If the connection cannot be made successfully, reduce the distance.



Select the channel of the remote control on which the Smart Switch is to be programmed.

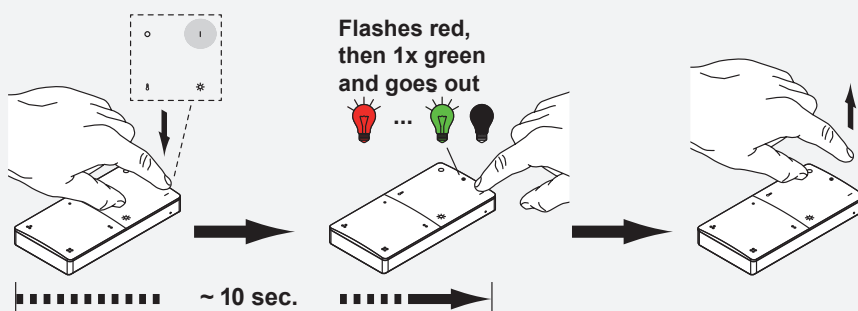
Briefly press the corresponding channel button at the bottom of the remote control.



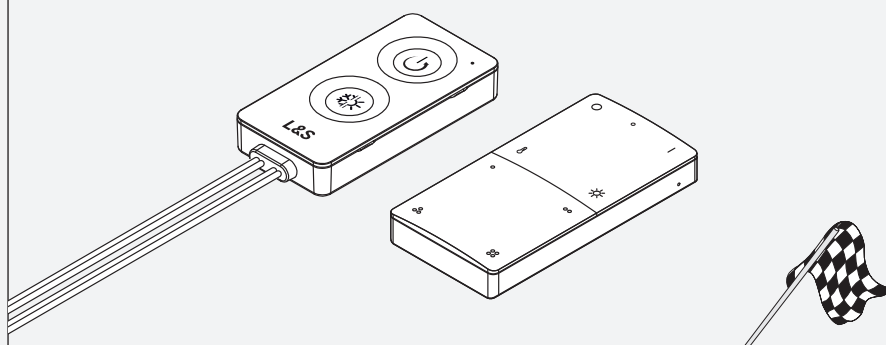
Press and hold the ON button on the remote control for approx. 10 seconds until the status LED lights up green.

Note:

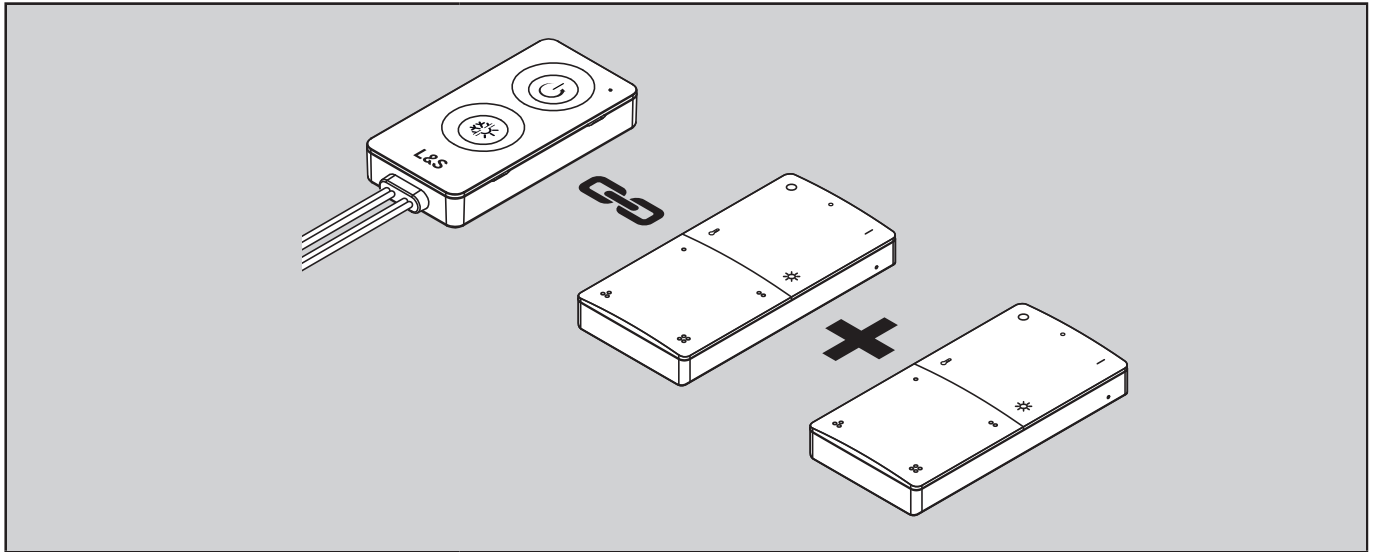
While the button is pressed, the status LED on the remote control flashes red several times. Only release the button when the LED flashes green and goes out!



The Smart Switch and remote control are now connected and the pairing process is complete.



PAIRING MULTIPLE REMOTE CONTROLS


Note:

Pair the first remote control (see "Pairing a remote control" on page 12).
Prepare the second remote control and remove the protective tab from the battery compartment.

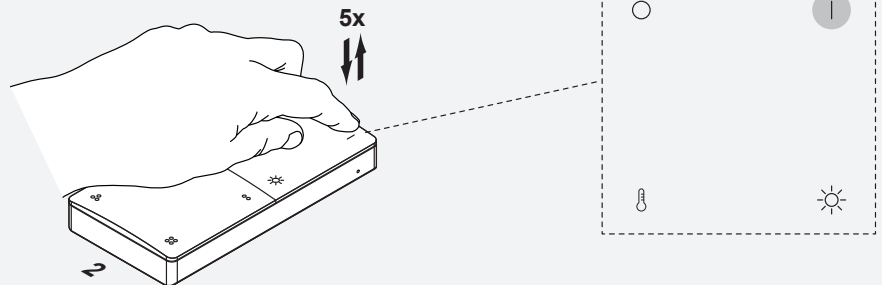
Briefly press the ON button 5 times on remote control **2** to start pairing mode.

Note:

The status LED flashes green once and then flashes red slowly. Carry out the next steps now!

Attention!

Pairing mode lasts approx. 30 seconds, after which the remote control can no longer be programmed and the status LED flashes red quickly. In this case, start the procedure again.

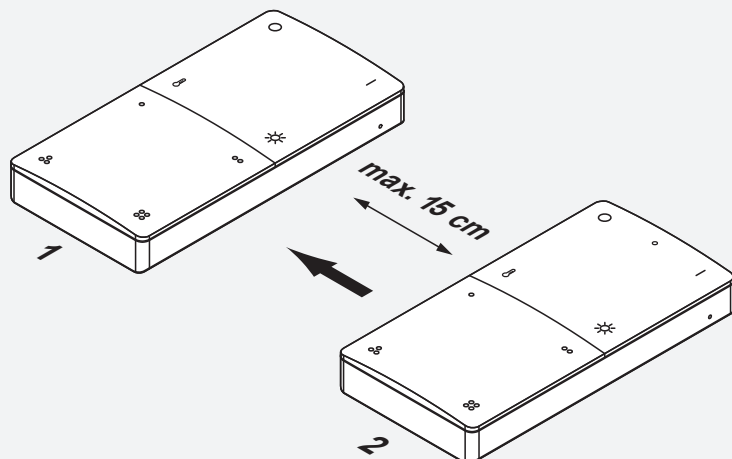


Hold the two remote controls close to each other.

Note:

The remote controls should be no more than 15 cm apart during the entire pairing process. If the connection cannot be made successfully, reduce the distance.

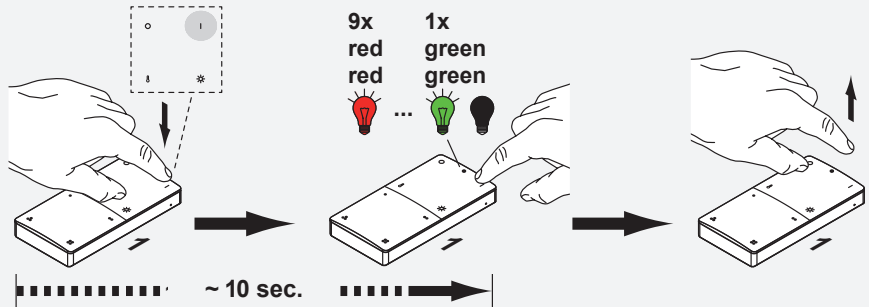
Keep the remote controls out of the range of the Smart Switch.



Press and hold the ON button on remote control **1** for approx. 10 seconds until the status LED lights up green.

Note:

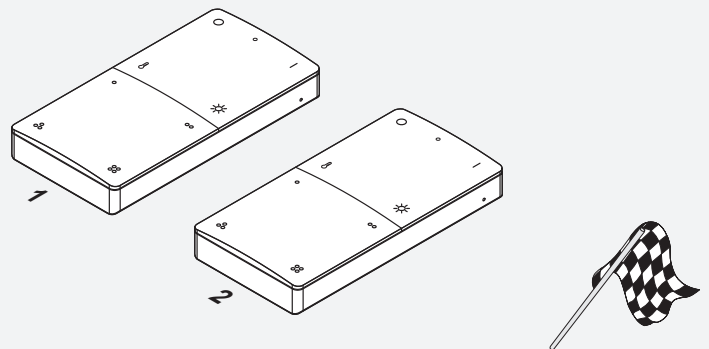
While the button is pressed, the status LED on the remote control flashes red several times. Only release the button when the LED flashes green and goes out!



The status LED on remote control **2** goes out.

Note:

The two remote controls are now paired and control the Smart Switch.



Note:

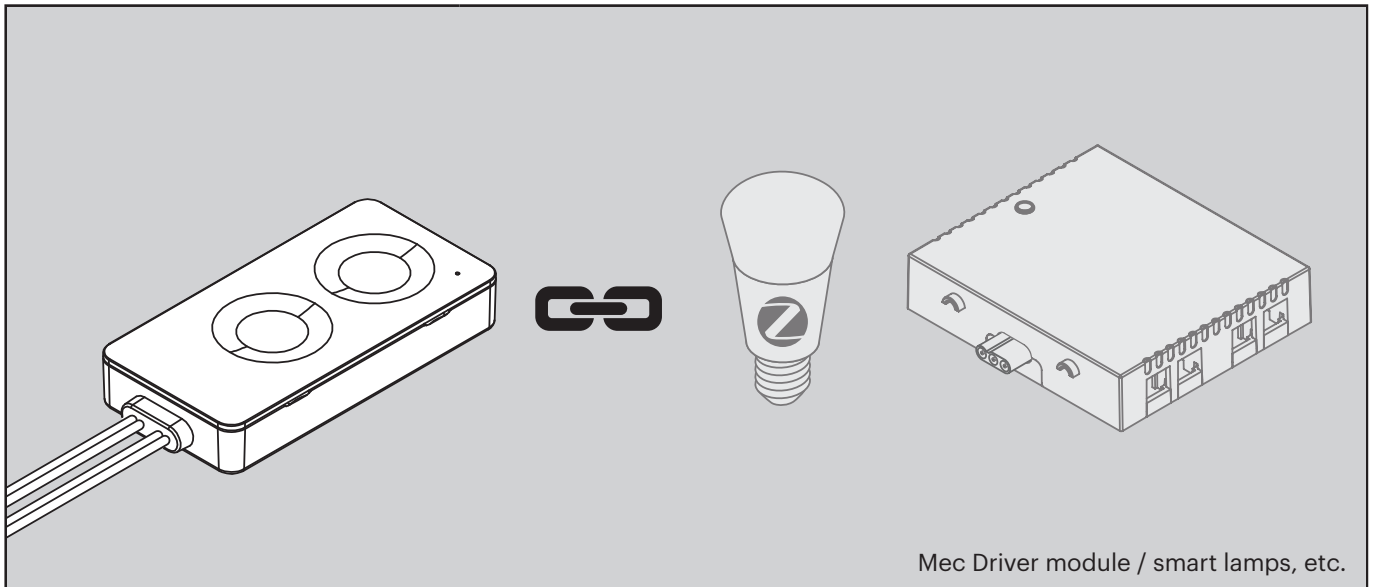
More than 2 remote controls

You can pair as many remote controls as you like. A new remote control can be paired with any other paired remote control.

Configuration with multiple Smart Switches:

To operate multiple Smart Switches with multiple remote controls, first pair remote control **1** individually with all Smart Switches. Then pair remote control **2** with remote control **1** (see above).

PAIRING ADDITIONAL COMPONENTS DIRECTLY

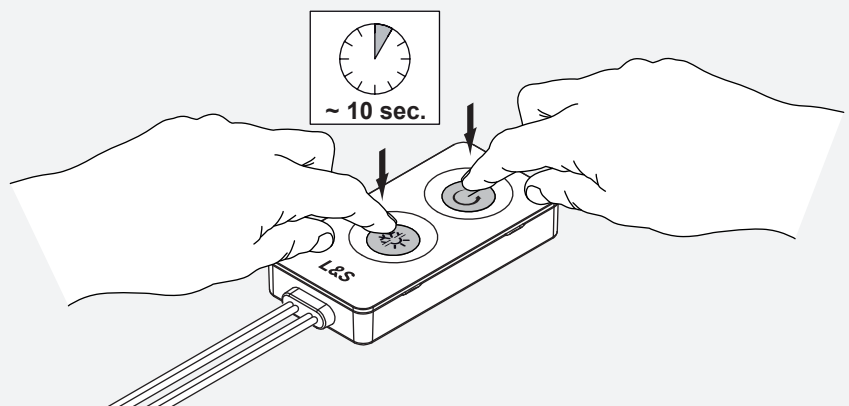


Press and hold both buttons on the Smart Switch for approx. 10 seconds.

Note:

While the button is pressed, the status LED on the on the Smart Switch lights up. After 10 seconds, the Smart Switch switches to setup mode and the status LED flashes red.

Setup mode ends after 2 minutes.

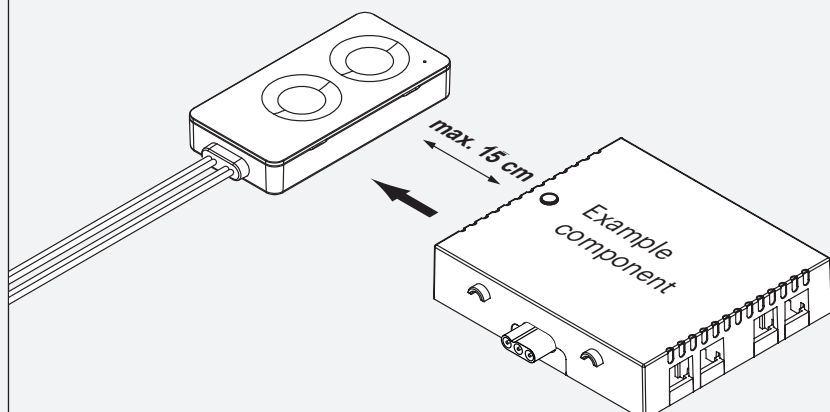


The Smart Switch is in setup mode.

Hold the Smart Switch and Zigbee module, smart lamp or similar device close together to carry out the pairing process.

Note:

The component to be paired should be a maximum of 15 cm away from the Smart Switch during the entire pairing process. If the connection cannot be made successfully, reduce the distance.

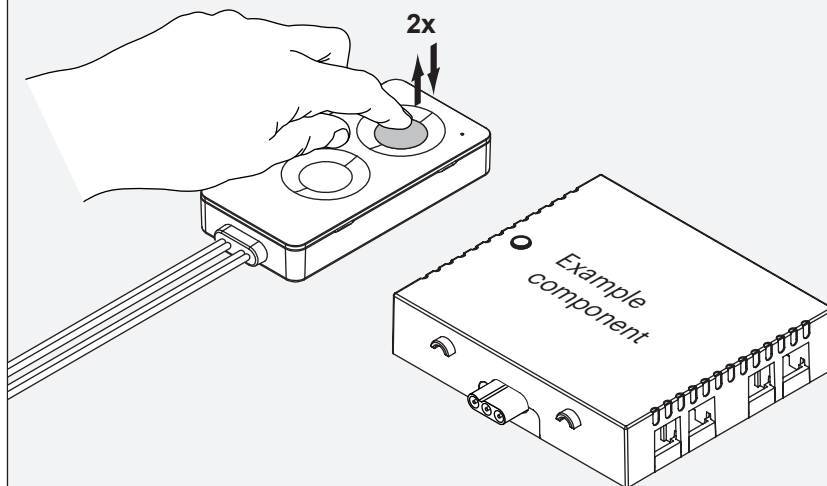


Briefly press button 1 twice on the Smart Switch twice (double-click).

Note:

The status LED on the Smart Switch flashes green.

The connected lights on the module flash several times / The Smart lamp flashes several times.

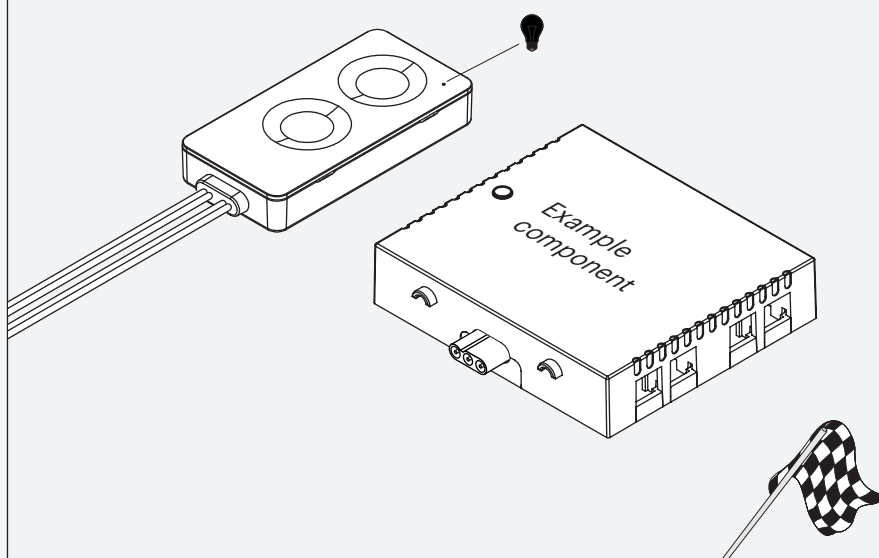


The status LED on the Smart Switch goes out.

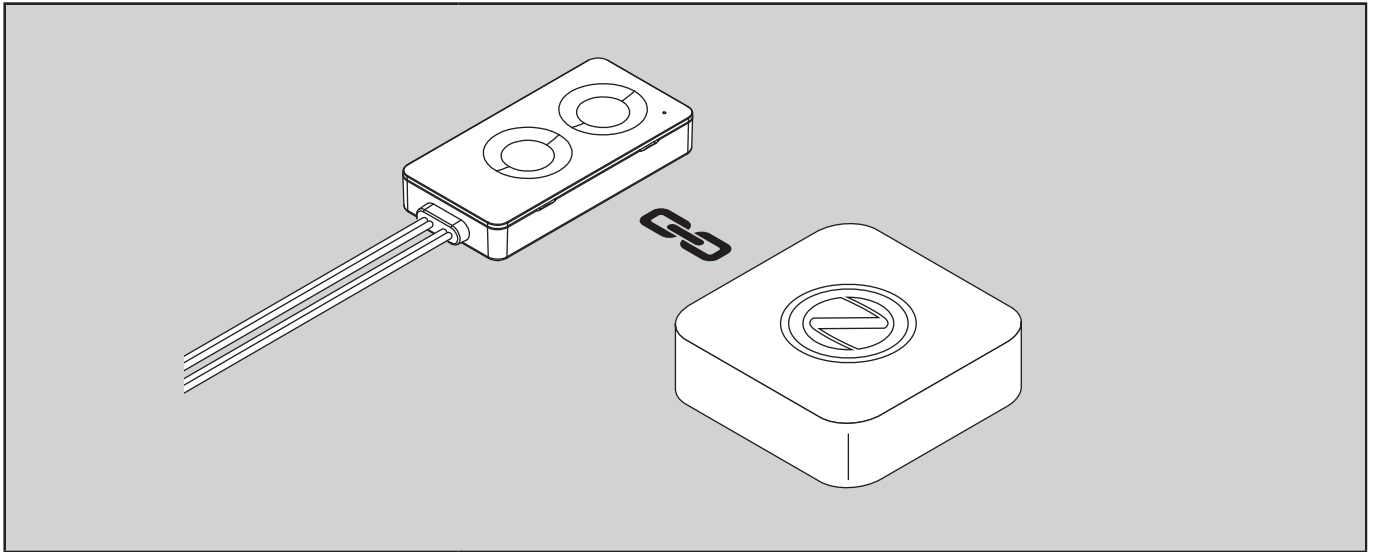
The Smart Switch and the component to be paired are connected and the pairing process is complete.

Note:

If a remote control was paired to the Zigbee module, this connection is disconnected. The Zigbee module is then only controlled via the Smart Switch.



CONNECTING ZIGBEE BRIDGE



Reset the Smart Switch:

Press and hold both buttons on the Smart Switch for approx. 10 seconds (status LED flashes red).

Then press and hold button 1 on the Smart Switch for 10 seconds.

Note:

The status LED briefly lights up green and then continuously red.

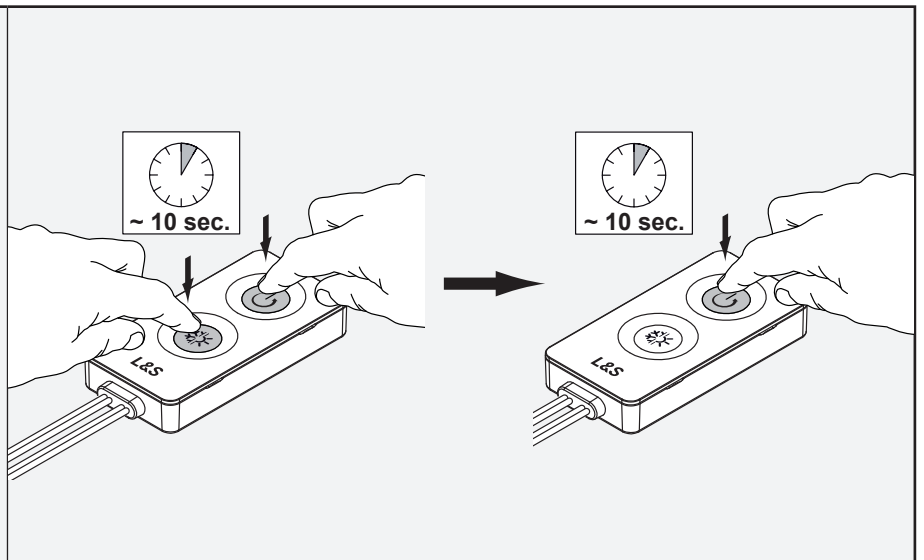
The Smart Switch has been successfully reset.

Only smart switches that are not connected to other devices can be recognised in the Zigbee network.

Open your Zigbee Bridge app and search for new lamps. To do this, follow the instructions in your Zigbee app.

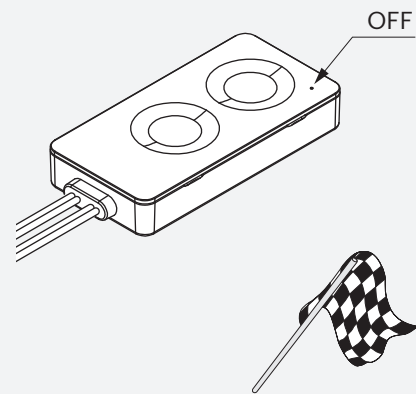
Note:

The app will indicate that lights have been detected

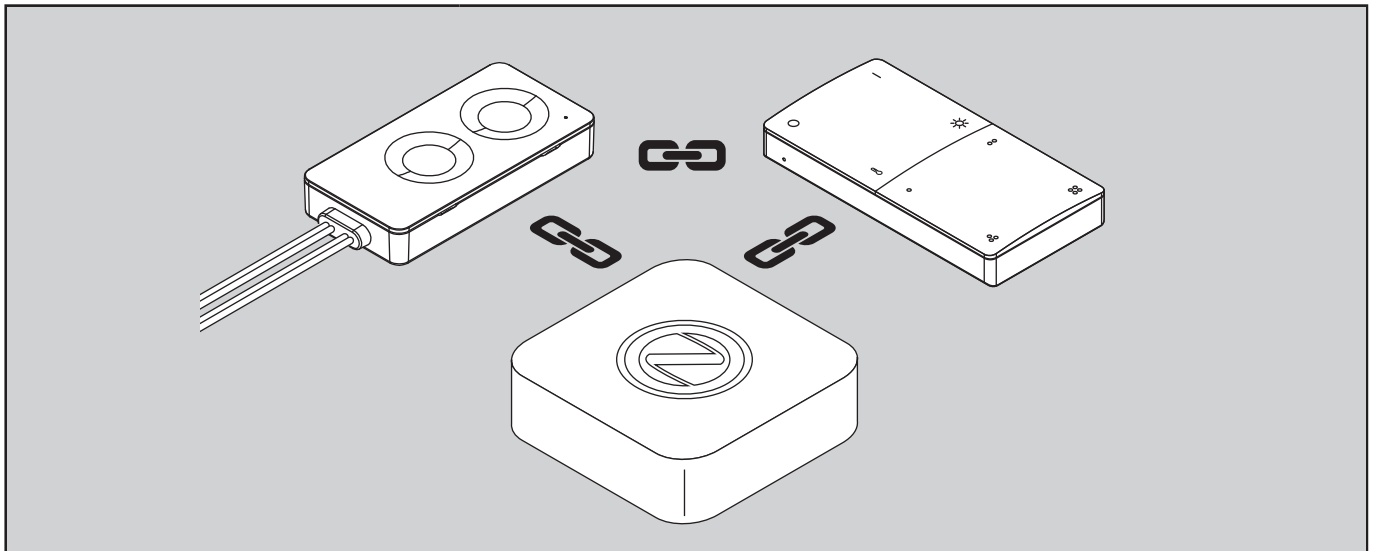


The status LED on the Smart Switch goes out.

The connection to Zigbee Bridge has been successfully established.



CONNECTING A SMART SWITCH WITH ZIGBEE BRIDGE AND A REMOTE CONTROL


Note:

The lights on the Smart Switch can be controlled via the Zigbee network (e.g. app / smart speaker). Remote control commands are also recognised by the Zigbee network and displayed in the app (possibly with a slight time delay). First, both components are registered in the Zigbee network. The Smart Switch and remote control are then connected.

Press and hold both buttons on the Smart Switch for approx. 10 seconds (status LED flashes red).

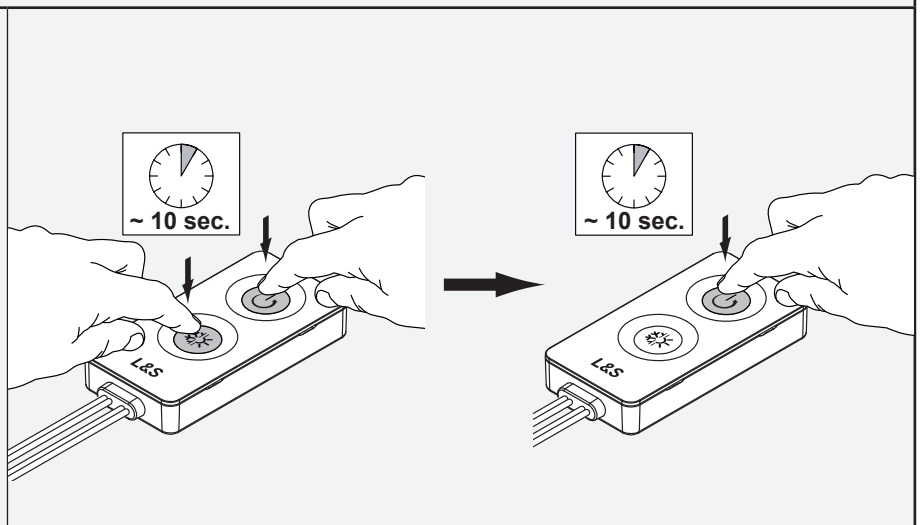
Then press and hold button 1 on the Smart Switch for 10 seconds.

Note:

The status LED briefly lights up green and then continuously red.

The Smart Switch has been successfully reset.

Only smart switches that are not connected to other devices can be recognised in the Zigbee network.



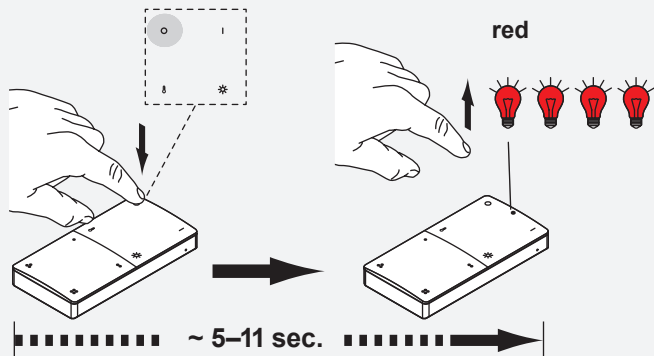
Open your Zigbee Bridge app and search for new lamps. To do this, follow the instructions in your Zigbee app.

Note:

The app will indicate that lights have been detected



Press the OFF button for approx. 5–11 seconds until the status LED on the remote control starts to flash **red**. The remote control is now in pairing mode **for 60 seconds**.



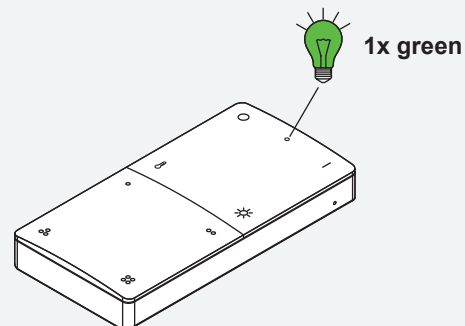
Open your Zigbee Bridge app and search for new lamps. To do this, follow the instructions in your Zigbee app.

Note:
No notifications will appear in the app.



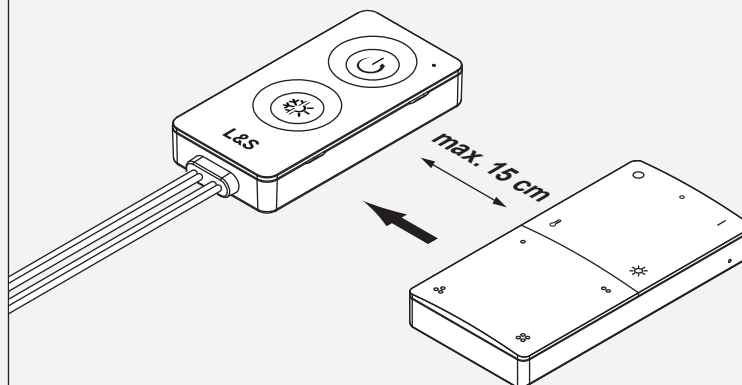
As soon as the app has detected the remote control, the status LED on the remote control flashes green once and goes out.

Note:
Now cancel the search process in the app.



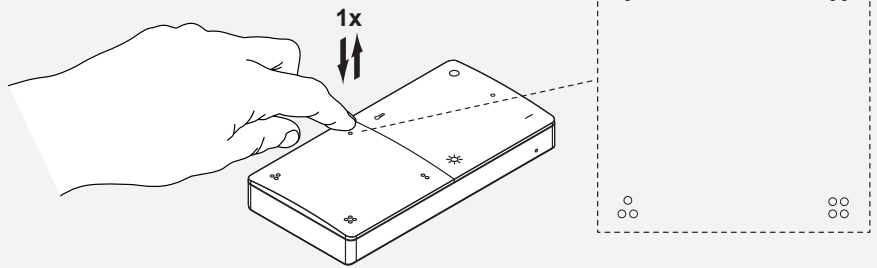
Hold the Smart Switch and remote control close together to carry out the pairing process.

Note:
The remote control should be a maximum of 15 cm away from the Smart Switch during the entire pairing process. If the connection cannot be made successfully, reduce the distance.



Select the channel of the remote control on which the Smart Switch is to be programmed.

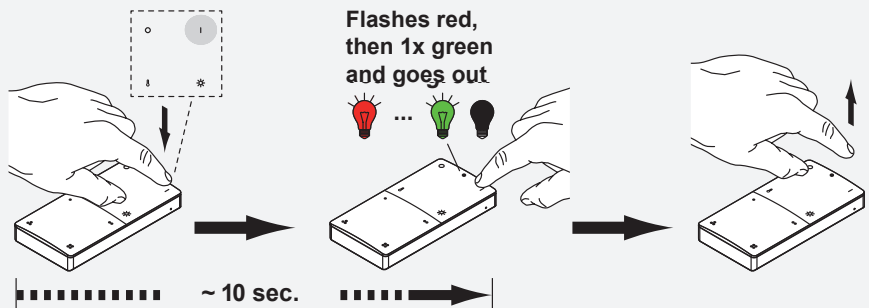
Briefly press the corresponding channel button at the bottom of the remote control.



Press and hold the ON button on the remote control for approx. 10 seconds until the status LED lights up green.

Note:

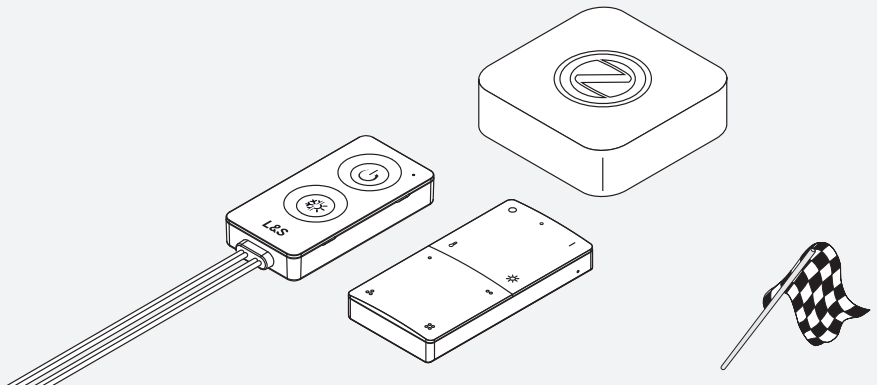
While the button is pressed, the status LED on the remote control flashes red several times. Only release the button when the LED flashes green and goes out!



The Smart Switch and remote control are now connected and recognised in the Zigbee app. The pairing process is complete.

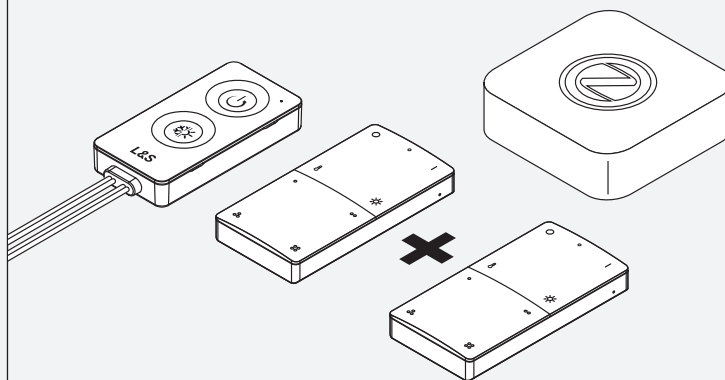
Note:

As soon as the remote control and Smart Switch are connected in the Zigbee network, other lamps can no longer be grouped with the Smart Switch in the app. The remote control is then excluded.



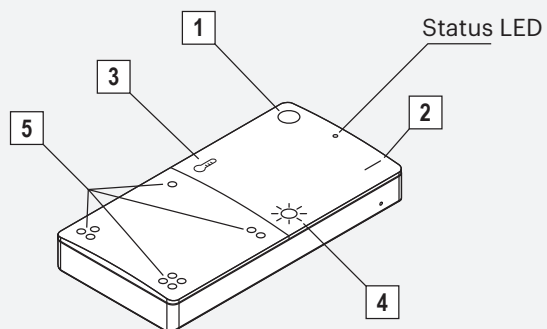
Note:

To connect additional remote controls, follow the instructions on p. 14 under "Pairing multiple remote controls".



REMOTE CONTROL - OPERATION

Button	Symbol	Function
1	○	All OFF
2	I	All ON
3	🌡️	Change colour temperature
4	☀️	Dimming
5	○ ○○ ○○ ○○	Select lighting group

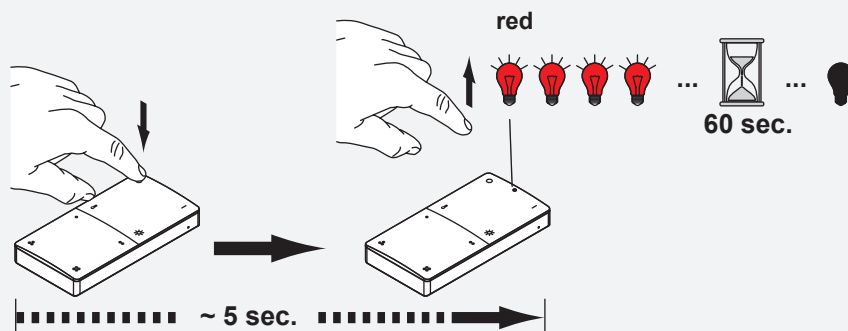


REMOTE CONTROL - RESET

Press the OFF button for approx. 5 seconds.

The status LED on the remote control flashes **red**.

The remote control is reset to the factory settings.



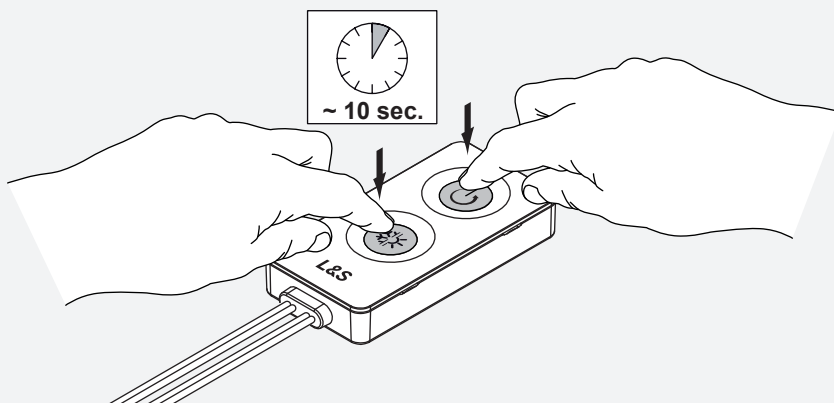
SMART SWITCH - SETUP MODE

Press and hold both buttons on the Smart Switch for approx. 10 seconds

Note:

While the button is pressed, the status LED on the on the Smart Switch lights up. After 10 seconds, the Smart Switch switches to setup mode and the status LED flashes red.

Setup mode ends after 2 minutes.



SMART SWITCH - RESET

Press and hold both buttons on the Smart Switch for approx. 10 seconds (status LED flashes red).

Then press and hold button 1 on the Smart Switch for 10 seconds.

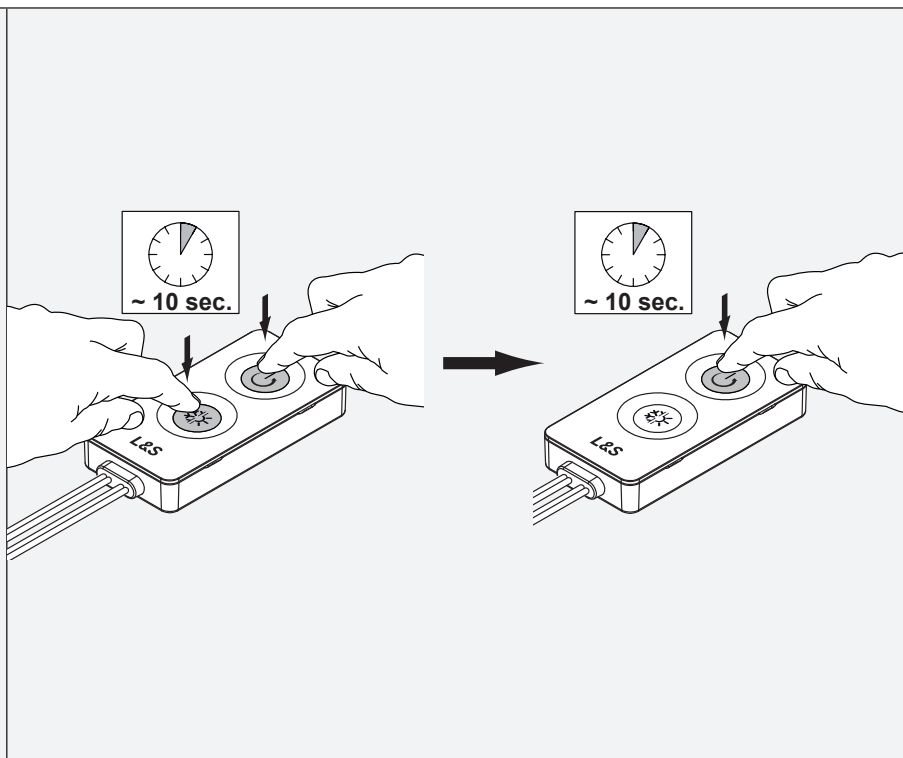
Note:

The status LED briefly lights up green and then continuously red.

The Smart Switch has been successfully reset.

--

Only smart switches that are not connected to other devices can be recognised in the Zigbee network.





L&S Deutschland GmbH

Daimlerring 34

D-32289 Rödinghausen

www.ls-light.de